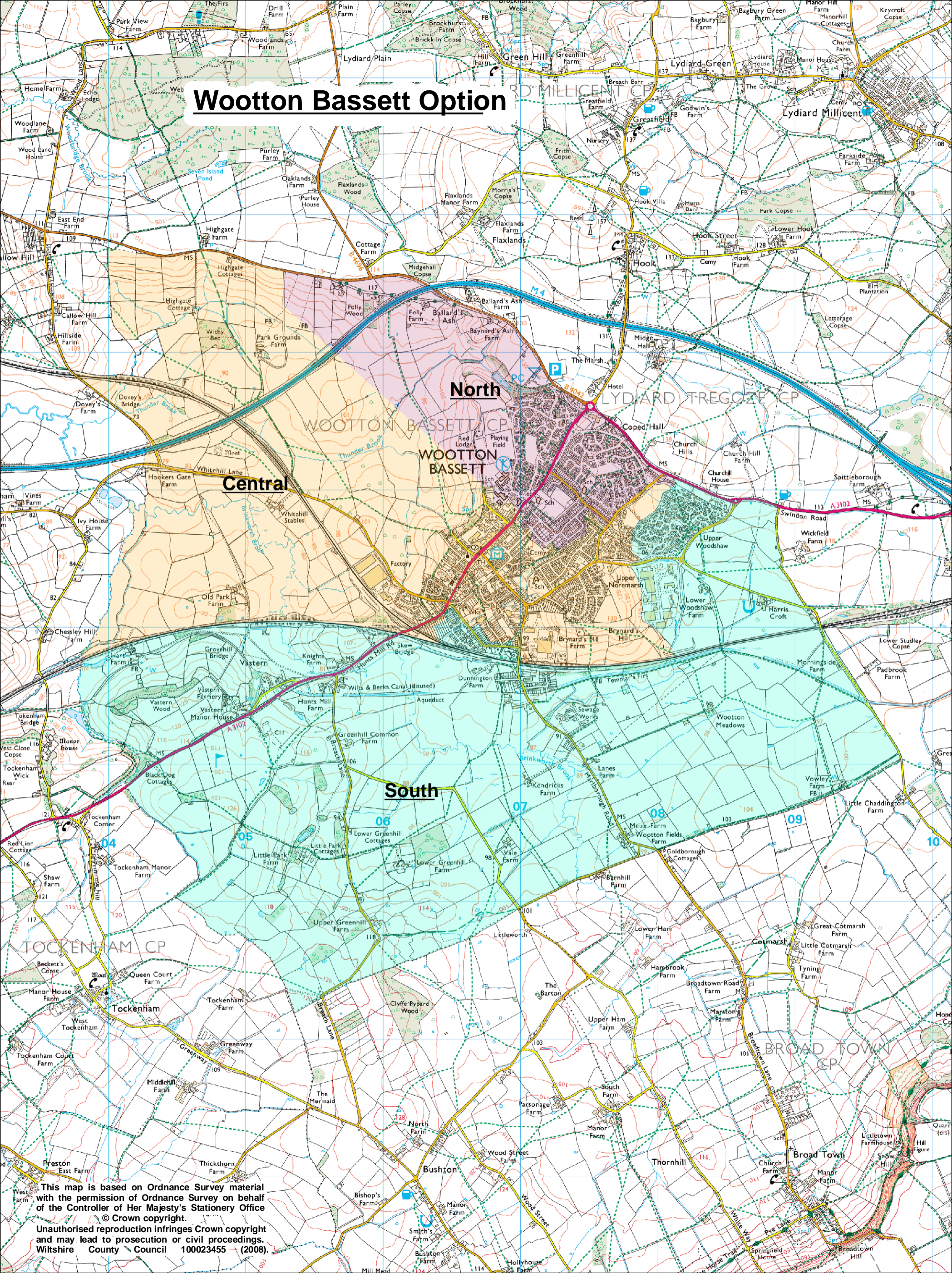


# Wootton Bassett Option



**North**

**Central**

**South**

This map is based on Ordnance Survey material with the permission of Ordnance Survey on behalf of the Controller of Her Majesty's Stationery Office © Crown copyright.  
Unauthorised reproduction infringes Crown copyright and may lead to prosecution or civil proceedings.  
Wiltshire County Council 100023455 (2008).