

# Marlborough Area Board Report

May 2017

## 1. East Community Policing Team

**Sector Head:**  
Inspector Nick Mawson



**Sector Deputy:**  
Sergeant Mark Andrews



**Community Coordinator:**  
PC Teresa Herbert



**Marlborough PCSO's:**  
PCSO Lucy Stonestreet



PCSO Mark Braithwaite



Hello and welcome to this Community Policing Team report.

Over the last month Wiltshire Police has been running a survey, collecting feedback about the Community Policing Team model. We thank you all for your help in generating this important information, which will help us to ensure that we are providing the high quality of service that the people of Wiltshire and Swindon deserve and expect.



## **Police use of Taser and Body Worn Video Cameras**

Wiltshire Police currently has 160 Tasers and is offering instruction to officers who successfully apply for additional training in an effort to help maintain public and officer safety by making a greater number of the existing devices able to be deployed at any one time.

Tasers are used by trained Police Officers in a number of ways, many of which involve no direct physical force to be used on a person.

They can be drawn from the holster, aimed at the subject, have the 'red dot' pointed at the subject with the laser sight or activated so that an electric current is 'arced' at the front of the device, all of which can resolve incidents.

Home Office figures released last week showed a drop in the number of times Tasers were discharged nationally.

Chief Constable Mike Veale said: **"The use of Taser has been widely debated and I have carefully considered the options.**

**"I feel that by giving officers the option to carry Taser we are giving them the choice to use the tools available to us at this time to keep both keep the public and themselves safe.**

**"However, let me make it clear that I see the rollout of Tasers as a preventative measure not an aggressive tool.**

**"I also want to make it clear that it is not a tool to default to at the earliest opportunity; it needs to be used with precision, wisdom, proportionality and measure.**

**"I want to have the right resources in the right place at the right time with the right skills and accreditation to deal with the threat, risk and harm faced within communities.**

**"We have, geographically, a very large force with a huge degree of rurality which often leaves officers and staff working single crewed and on occasions feeling vulnerable to the dangers they may be facing.**

**"This decision is something which I hope will give our colleagues more confidence and courage to remain on the front foot so that we are able to protect our communities.**

**"We constantly assess the current risk and threat in the county and I believe that it is the right time to increase the training in Taser and in turn, increase our capacity.**

**"Although Wiltshire is one of the safest counties in the country, we still face a rise in violent crime and the threat of terrorism remains very real throughout the UK.**

**"Taser can be used effectively as a deterrent or as a way of ending a violent situation where someone is at risk of harm."**

In addition to increasing Taser capability, Wiltshire Police is rolling out body-worn cameras to front line officers and staff. Many of you may have already seen a number of our officers sporting the new body worn video cameras.

Mr. Veale said: **"This new investment in body-worn video cameras will help us transform the way we work, allowing our officers and staff to do their jobs serving the communities of Wiltshire and Swindon with greater confidence and security.**

**"Our police officers and staff put themselves into volatile and dangerous situations every day and these cameras should not only act as a deterrent to those who may wish to cause them harm, but can also be used as valuable evidence when officers and staff are subjected to violence and abuse.**



“It should also give the public greater confidence in our professionalism and, on the rare occasions where our service does not live up to our high standards, allow us to take action and learn from any errors or mistakes.

“These cameras are as much about the officer behind the camera as the person in front of it. They will help ensure Wiltshire Police continues to provide the high standards of service that both the Force and the people they serve expect.”

## Operation Sceptre

This week Wiltshire Police has joined forces across the country taking part in Operation Sceptre. The operation is a week-long period of activity targeting knife crime.

Police activity throughout the week will include weapon sweeps, intelligence led stop and search as well as proactive operations to tackle those wanted in connection with knife related offences and violent crime.

A significant part of the Wiltshire activity will be providing educational presentations to young people in schools. The presentation known as FAKE (Firearms and Knife Education) aims to make young people think about the decisions they make and the consequences of their actions that could lead to them embarking on a life of crime.

Superintendent David Minty said: “Whilst it has been found that recorded crimes of possession of weapon offences are falling, our analysis shows that the use of the word ‘knife’ or ‘knives’ in occurrences has increased year on year from 2014 to 2016. There were 577 occurrences in 2016 of which 28% involved those aged 10-17.”

“I would emphasise the majority of young people stay within the law and we are asking schools and parents to ensure that it stays that way. For those who don’t the consequences can be far reaching as a criminal record will affect the rest of someone’s life. It could prevent a person from going to university or college, getting a job or even travelling abroad.”

Carrying a knife is illegal in the UK and the consequences are tough. A person found in possession of a knife - even if it’s not their own - means The Police and Courts will take firm action. Possession of a knife can carry a prison sentence of up to 4 years, even if it isn’t used. If you have any information about anyone carrying or using knives please contact us on 101 or 999 in an emergency.

You can also make a report anonymously by calling Crimestoppers on 0800 555 111.

## Events

A toolkit is available from Wiltshire Council which gives fantastic guidance and advice for organising most types of events including topics ranging from traffic management to toilets and provides contact details for which agencies and departments need to be contacted when applying for various licences or road closures. It can be found at <http://www.wiltshire.gov.uk/public-events-toolkit.pdf> In essence all organisers must be responsible for identifying any risks and putting in measures to remove or reduce them.



Thank you for your continued support to Wiltshire Police.

Please follow us on:

Twitter <https://twitter.com/wiltshirepolice>

Facebook <https://www.facebook.com/wiltshirepolice/>

Or sign up to Community Messaging <https://www.wiltsmessaging.co.uk/> Our free Community Messaging service will also help keep you updated about policing and crime in your local area.

## **2. CPT - Current Priorities & Consultation Opportunities:**

### **Current Priorities Marlborough and surrounding areas.**

#### **Dwelling and non-dwelling burglaries.**

Nearly 200 targeted patrols have occurred since this niche priority was created on the 26th October 2016 (at the commencement of CPT). Since the last Area Board meeting on 14<sup>th</sup> March 2017, we have experienced thirty nine burglaries in Marlborough and the surrounding villages, 11 of these were at a caravan site where 11 separate caravans were broken into, twelve were dwelling, seven were non-dwelling (sheds) and nine were commercial Burglaries. This an increase on the previous two month period where there were only 17 reported burglaries and as such will remain a priority for the area.

Investigations are ongoing into twenty eight of these thirty nine recent burglaries with oversight being given by the area's Burglary Champion, this has lead to several occurrences being linked to others and further enquiries established, in several instances forensics have been recovered from the scene and it is hoped this may identify some suspects.

Wiltshire Police will be continuing to try and limit the number of offences by pro-active policing and ongoing policing operations in these areas.

A rural crime operation was carried out in early February. This involved local estate managers and gamekeepers, as well as our colleagues from Thames Valley Police, there are more planned in the coming weeks and months alongside our Special Constabulary colleagues.

Community intelligence is crucial for us to achieve this aim so please continue to report incidents, information and any concerns.

#### **Theft from motor vehicles**

A determined effort has been made by the east community policing team to deal with theft from vehicles, particularly at beauty spots.

This policing priority has focussed upon proactive, preventative interventions including a red route system of targeted patrols, (ninety one completed thus far), crime reduction work with The National Trust and English Heritage and increased signage and community engagement.

This has resulted in a marked reduction for this area - with 19 thefts from motor vehicles reported in a 60 day period, with only 5 of these being at beauty spots, two at Clench common, 2 at Postern Hill and one at Avebury all with items left in view and the remaining 14 being on residential streets, predominantly being theft of tools or items such as handbags left in clear view such as on the passenger seat or in a foot well.

Intelligence work is ongoing in relation to those nominals active in this area of criminality and policing operations continue.

Operation Esso was conducted on Saturday 29<sup>th</sup> April - this saw nineteen special constables active throughout our area including London Road in Marlborough and the A345 at Oare - a roads policing operation, involving active ANPR work, the use of UNIPAR machines for speed enforcement and assistance with response policing and this particular policing priority.

Such events are effective in keeping our communities safe. In total, 62 drivers were given words of advice for excess speed and the manner in which they were driving. Seven endorsable fixed penalty notices were issued for speeding during the operation which targeted the main causes of serious collisions on our roads, also known as the Fatal Four:



### Update re Rural Crime Partnership

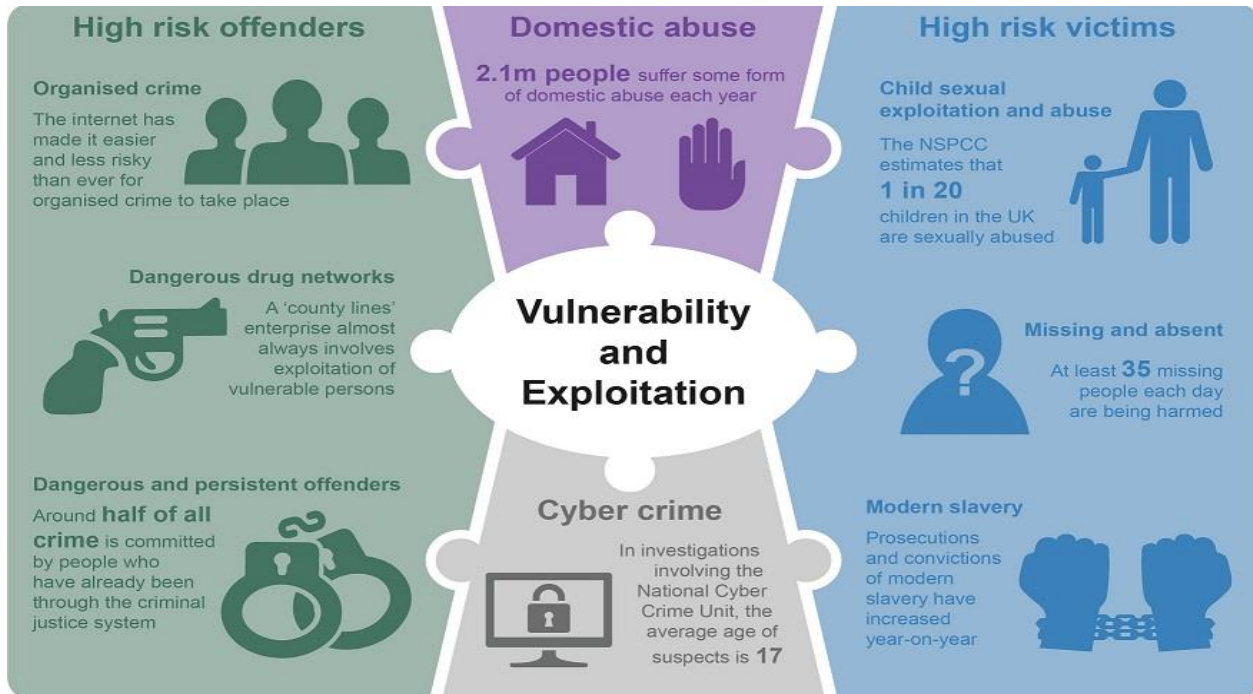
Officers from the east policing team recently attended this event involving representatives from the NFU, the Military, Angling Trust, Dorset Rural Crime Team, together with farmers and gamekeepers from east Wiltshire. Operation ASTEN has involved dealing with illegal off roaders on Salisbury plain. Recently fifty plus individuals were stopped and dealt with in relation to this activity, many were unaware of the offences they were committing, a positive outcome for this priority to the Amesbury area which involved the Pewsey areas of the plain.

Rural crime operations continue, in our efforts to target what is often cross border organised criminal activity. Of one particular individual who has been actively involved in hare coursing and trespass on farmland a Community Protection Warning notice has been issued, in addition to seeking out prosecution for the offence itself. We are eager to utilise this legislation for persistent and impactful rural crime incidents.

Fish related offences; it is currently the closed season (15<sup>th</sup> March - 15<sup>th</sup> June), course angling is suspended on rivers, streams and some canals and still waters during close season. In enclosed waters fish are property and their removal is theft. Please report any activity via 101.

### 3. Wiltshire Police Control strategy

Below is our Control Strategy for your reference. This focuses on how we conduct our operational policing based on the Police and Crime Plan. We will continue to align our resources with the threat/harm/risks presented in line with the control strategy.



#### Cybercrime

There have been no reported instances of cybercrime since the last meeting.

#### Domestic Abuse

Marlborough community policing team continue to engage with victims of domestic abuse, following the Force's positive action requirement in all instances (this does not necessarily mean arrest). And further support is provided to victims by staff at Horizon, which was set up in 2014 to help victims of crime access the most appropriate support for their circumstances. Wiltshire Police also continue to disclose information under the Domestic Violence Disclosure Scheme also known as Clare's Law



#### High Risk Victims

Since the last Area Board meeting I am pleased to say that we have had no reports of Rogue Trader type offences on elderly victims.

The national Operation Rogue Trader campaign involved a week of action (Monday 8 May until Friday 12 May) from police forces and agencies across the UK, with a specific day of enforcement on Tuesday 9 May 2017. Wiltshire Police officers and staff along with members of Trading Standards took part in the day with officers using Automatic Number Plate Recognition (ANPR) to carry out intelligence-led roadside stop checks of vehicles, as well as mobile patrols and engaging with the public to offer advice and guidance around rogue trading in their specific area.



Similarly, I am pleased to say that Marlborough CPT have had no recent reports of scam phone calls, particularly targeting vulnerable and elderly people. Nationally however, this remains an issue and is regularly reported on in the national news. Callers are stating they are police officers, and have a person detained who is in possession of bank and credit cards in their name. These callers then proceed to ask for details of their bank accounts and PIN numbers. They can be very convincing. The scammers will use any means to sound plausible and stating that they are Police Officers is an obvious way to do this. You should NEVER give your passwords or PIN number to ANYONE on the phone. Please share this information with friends, relatives and relevant people to reduce their risk of becoming victims of these crimes. Advice and guidance can be found at <http://www.actionfraud.police.uk>

Unfortunately there have been two recent instances in Marlborough of elderly ladies having their purse stolen from their handbag.

### **High Risk Offenders**

The CPT continue to work closely with the Public Protection Department to identify persistent or dangerous offenders, to engage with them and to take positive action where required.

**Nick Mawson**  
Sector Inspector,  
Wiltshire East CPT