

What is Neighbourhood Planning?



A Neighbourhood Plan or a Development Order?

Neighbourhood Plans

A neighbourhood plan can establish general planning policies for the development and use of land in a defined area. The plan might specify, for example, where new homes and offices should be built, and what they should look like. The plan sets a vision for the future, and can be detailed or general depending on what local people want.

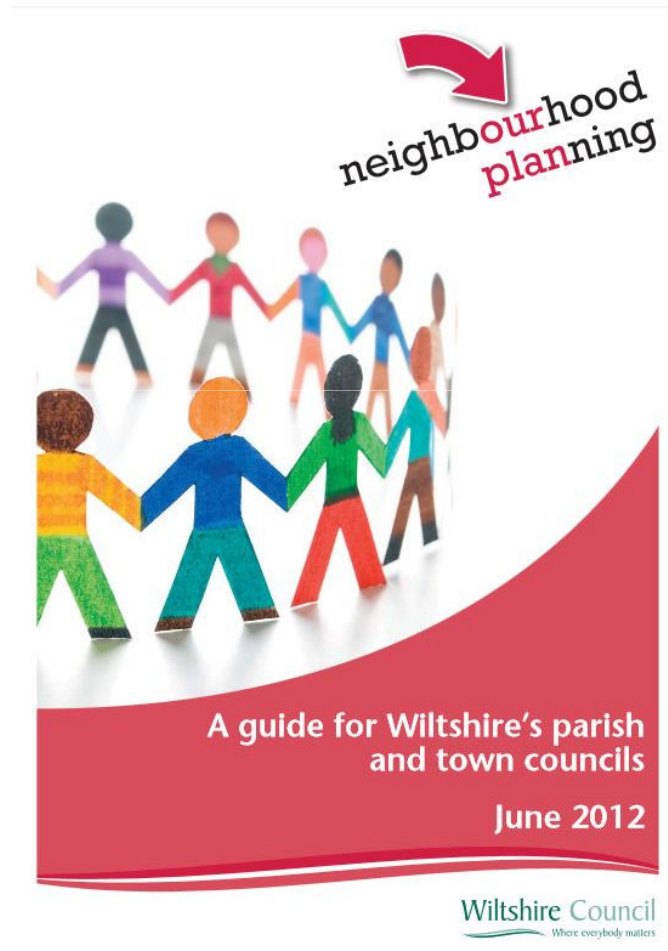
Neighbourhood Development Orders

A neighbourhood development order directly grants planning permission for certain kinds of developments within a neighbourhood area. Permission could be full or outline, could have conditions attached and could be site-specific or grant more generalised development rights across a neighbourhood area.

Advice from Wiltshire Council

As the relevant local authority, Wiltshire Council is required to fulfil various legal duties to support neighbourhood planning in Wiltshire. These include publishing neighbourhood area applications for consultation, designating neighbourhood areas, publishing submitted plan proposals, appointing the independent examiner, and organising the independent examination and referendum. The Localism Act 2011 also places a legal duty on local planning authorities to give advice or assistance to parish and town councils that want to undertake neighbourhood planning.

Wiltshire Council has developed a guide specifically targeted towards parish and town councils wishing to explore the neighbourhood planning process:



Who to contact?



- ▲ Home
 - ▲ Planning and building control
 - ▲ Planning policy
 - ▲ Wiltshire neighbourhood planning portal
-
- A to Z
 - My area
 - Find my nearest
 - Council data
 - Moving house
 - Advice for parents
 - Older people
 - Visitors to Wiltshire

Pay

Report

Book

Apply

Enter your search terms



You are here: [Home](#) > [Wiltshire neighbourhood planning portal](#) > [Contacts](#)

Contacts

Please [tell us what you think](#) about our website, we welcome your feedback.

Wiltshire Council advocates a 'steering group' approach when exploring the neighbourhood planning process. The steering group will be allocated a 'link officer' to provide informal advice and support. Wiltshire Council has a duty to assist and support local communities in Wiltshire. The lead qualifying body (Town or Parish Council) should email neighbourhood.planning@wiltshire.gov.uk before the steering group is formed to be allocated a link officer

Email: neighbourhood.planning@wiltshire.gov.uk

Tel: 01225 713223

Neighbourhood Planning
Wiltshire Council
Bythesea Road
Trowbridge
Wiltshire
BA14 8JN

Last updated: 26 June 2012

http://www.wiltshire.gov.uk/planninganddevelopment/
planningpolicy/neighbourhoodplanning.htm

- ▲ Home
- ▲ Planning and building control
- ▲ Planning policy
- ▶ **Wiltshire neighbourhood planning portal**
- A to Z
- My area
- Find my nearest
- Council data
- Moving house
- Advice for parents
- Older people
- Visitors to Wiltshire

Contact details

Pay Report Book Apply

Enter your search terms

You are here: [Home](#) > [Planning policy](#) > Wiltshire neighbourhood planning portal

Wiltshire neighbourhood planning portal

Please [tell us what you think](#) about our website, we welcome your feedback.



**neighbourhood
planning**

What is neighbourhood planning?

This website provides information, news and resources relating to neighbourhood planning in Wiltshire. The portal will also help local communities stay up-to-date on progress with neighbourhood plans in Wiltshire.

Neighbourhood planning will help communities shape the future of their areas. This could include determining the location of shops, offices and schools to setting standards of design for new housing. Wiltshire Council will assist communities who choose to prepare neighbourhood plans.

Frequently Asked Questions

[Text reader](#) [High contrast](#) [Accessibility](#)

Pay Report Book Apply Enter your search terms

You are here: [Home](#) > [Wiltshire neighbourhood planning portal](#) > Frequently asked questions about neighbourhood planning

Frequently asked questions about neighbourhood planning

Please [tell us what you think](#) about our website, we welcome your feedback.

The frequently asked questions listed below seek to answer some of the most commonly raised questions regarding neighbourhood planning. Further detail on neighbourhood planning can be found in the publication Neighbourhood Planning - A guide for Wiltshire's parish and town councils, April 2012.

If you have a question regarding neighbourhood planning in Wiltshire please email neighbourhood_planning@wiltshire.gov.uk

What is neighbourhood planning?

Neighbourhood planning is a new way for communities to decide the future of the places where they live and work. The Localism Act introduces new permissive rights for local communities to prepare a neighbourhood plan, instigate neighbourhood development orders and exercise a community right to build.

Is neighbourhood planning compulsory?

Neighbourhood planning is optional not compulsory. Alternative options include development briefs, village design statements and community plans. Deciding if you need a neighbourhood plan is one of the most important steps of the process.

Who will lead on neighbourhood planning in Wiltshire?

Neighbourhood plans can only be prepared by a 'qualifying body'. In areas where a parish or town council exists, these are the nominated qualifying body. Outside these areas, neighbourhood planning can be undertaken by a designated 'neighbourhood forum'.

How will development be managed if we don't have a neighbourhood plan?

The Development Plan for Wiltshire sets the over-arching policy framework for our area. The Development Plan encapsulates a suite of documents – such as the Wiltshire Core Strategy; as well as the 'saved' policies of the former District Local Plans. In accordance with new national policy and planning regulations, documents such as the Wiltshire Core Strategy are now called "Local Plans". In overall terms, the Development Plan will remain the key tool and the starting point for determining development proposals.

What is the role of Wiltshire Council?

Wiltshire Council
Where everybody matters

- Home
- Planning and building control
- Planning policy
- Wiltshire neighbourhood planning portal

A to Z

- My area
- Find my nearest
- Council data
- Moving house
- Advice for parents
- Older people
- Visitors to Wiltshire

Contact details

[Contact Wiltshire Council](#)

Choose your address

To view contact details for this service, first, enter your postcode.

[I live outside Wiltshire](#)

Enter your postcode

Call us

Tel: 01225 713223

Write to us

Neighbourhood Planning
Wiltshire Council
Bythesea Road
Trowbridge
Wiltshire

ex.htm

Sources of External Support

Department for Communities and Local Government (DCLG)

- The DCLG [neighbourhood planning webpage](#) provides an overview of how neighbourhood planning works. Central government also post regular bulletins about news and policy developments related to neighbourhood planning online -see the [notes on neighbourhood planning](#) webpage for more details.

Supporting Communities in Neighbourhood Planning 2013-2015

- On 1 May 2013, a new 2 year, £9.5million support programme for communities engaging in neighbourhood planning will be launched. The government has awarded a contract to Locality in partnership with the Royal Town Planning Institute, Planning Aid England and partners to deliver this programme.
- Parish and town councils preparing a Neighbourhood Development Plan or Neighbourhood Development Order in England will be able to apply for grants. This [factsheet](#) provides information about the programme.

Locality

- Locality is leading the 'supporting communities in neighbourhood planning' scheme and their [website](#) will act as the single entry point to the programme.
- Locality is an organisation that can offer help to groups at all stages of the neighbourhood planning process. Locality has produced a [guide to understanding neighbourhood planning](#) available online

Planning Aid

- Part of the [Royal Town Planning Institute \(RTPI\)](#), Planning Aid England offers planning advice and support to individuals and communities. Planning Aid manage a [website](#) that supports people and communities who are using new powers under the Localism Act 2011 to create neighbourhood plans.
- **The Campaign to Protect Rural England (CPRE)**
- The CPRE have also produced a [guide to neighbourhood planning](#)

<http://planningguidance.planningportal.gov.uk>

This site is currently in Beta. [Read more](#)



National Planning Practice Guidance

National Planning Policy Framework Planning Practice Guidance

Search site:



[Home](#) > [Guidance](#) > [Neighbourhood Planning](#) > [What is neighbourhood planning?](#)

Guidance

Neighbourhood Planning

1. What is neighbourhood planning?
2. What can communities use neighbourhood planning for?
3. What are the benefits to a community of developing a neighbourhood plan or Order?
4. Who leads neighbourhood planning in an area?
5. What role should the local planning authority play in neighbourhood planning?
6. What is the neighbourhood planning process?
7. What are the basic conditions that a draft neighbourhood plan or Order must meet if it is to proceed to referendum?
8. Key stages in neighbourhood planning

www.malmesburyneighbourhood.com



[Our News](#) [Our Neighbourhood](#) [Our Summary Neighbourhood Plan](#) [Our Membership](#) [Our Finances](#) [more...](#)

Watch our short Neighbourhood Planning Video

[CLICK TO READ OUR PROPOSALS](#) [CONNECT WITH US](#) [CLICK TO READ ALL COMMENTS](#)



Malmesbury Neighbourhood Steering Group
Draft Malmesbury Neighbourhood Plan



PLEASE PUT FEEDBACK FORMS IN THIS BOX

