

Community Policing



One team

WILTSHIRE POLICE

Our purpose: To keep people safe and protect our communities



@wiltshirepolice



CONTENTS

- Policing Context and Demand
- Past and Present - Operational Policing Model
- Wiltshire North Community Policing Team
- Engaging in our Communities

WILTSHIRE POLICE

Our purpose: To keep people safe and protect our communities



@wiltshirepolice

TYPICAL DAILY DEMAND for Wiltshire Police

There will be approximately
1 officer
on duty for every 800
people living in the area



Officers will deal with:
30 violent crimes, **43** thefts,
10 burglaries, **7** car crimes and
61 anti social behaviour incidents

33 people
will be arrested by officers

Officers will issue:
4 cautions, **1** penalty notice for
disorder and **1** cannabis warning

Officers will carry out:
**8 stop
searches**



Respond to **8 reports**
of missing persons, four that are high or
medium risk

Answers **1,072**
calls for assistance, of
which 30% require
a response

Respond to approximately
10 incidents
associated with people with mental health
issues

Attend the scene of
**4 road traffic
collisions**
and **7 road
offences**



TYPICAL ONGOING DEMAND for Wiltshire Police

As well as reacting to calls we also undertake proactive work to safeguard the public, including...

Supporting more than
**1,000
families**
on the Troubled Families programme



Policing approximately
**12 organised
crime
groups**



Supporting victims of domestic abuse
through a monthly average of
**500
incidents**



Managing approximately
1,107
sexual and violent
offenders under a
multi-agency public
protection arrangement



NEW THREATS:



Child Sexual
Exploitation



Cyber crime
and fraud



Exploitation of
the vulnerable



Historic sex abuse

SETS DIRECTION:

- Police and Crime Plan
- National policing requirements
- Regional Control Strategy
- Assessment of threats, risks and harms

ENABLERS:

People and Culture, Leadership, Estates,
ICT, Financial Strategy

WILTSHIRE POLICE

Our purpose: To keep people safe and protect our communities



@wiltshirepolice



CONTROL STRATEGY



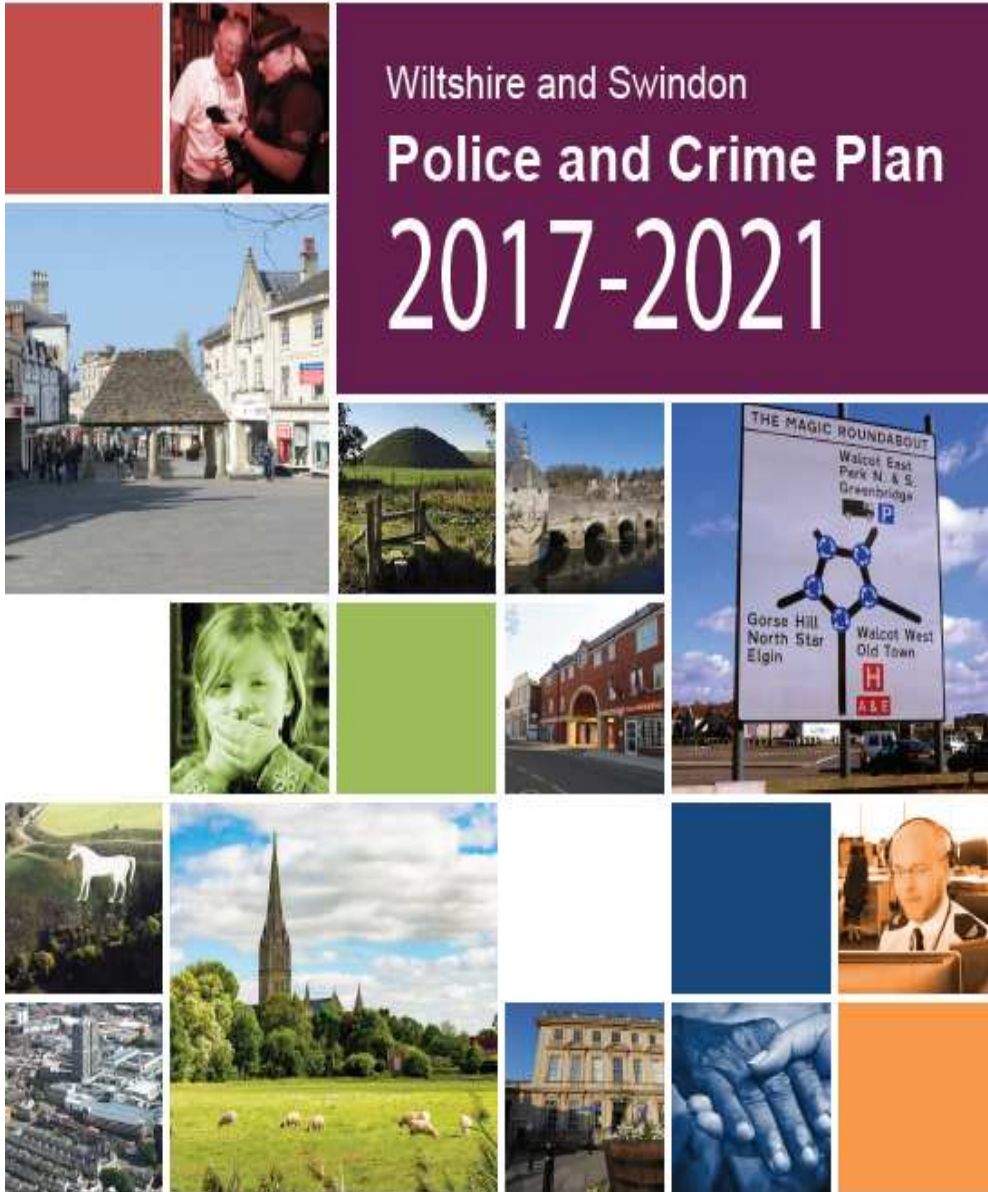
WILTSHIRE POLICE

Our purpose: To keep people safe and protect our communities



@wiltshirepolice

Wiltshire and Swindon Police and Crime Plan 2017-2021



PRIORITY 1:
Prevent crime
and keep
people safe

#TellAnguspcc
#AskAnguspcc



PRIORITY 2:
Protect the most
vulnerable in
society

#TellAnguspcc
#AskAnguspcc



PRIORITY 3:
Put victims,
witnesses and
communities at
the heart of
everything we do

#TellAnguspcc
#AskAnguspcc



PRIORITY 4:
Secure a
trusted, quality
and efficient
police service

#TellAnguspcc
#AskAnguspcc



WILTSHIRE POLICE

Our purpose: To keep people safe and protect our communities



@wiltshirepolice



HISTORY OF OPERATIONAL MODEL



Response Teams



Local Crime Teams



Neighbourhood Policing Teams

WILTSHIRE POLICE

Our purpose: To keep people safe and protect our communities



@wiltshirepolice




Community Policing

One team



WILTSHIRE POLICE

Our purpose: To keep people safe and protect our communities



@wiltshirepolice



CPTs AND AREAS

6 Community Policing Teams

Wiltshire North

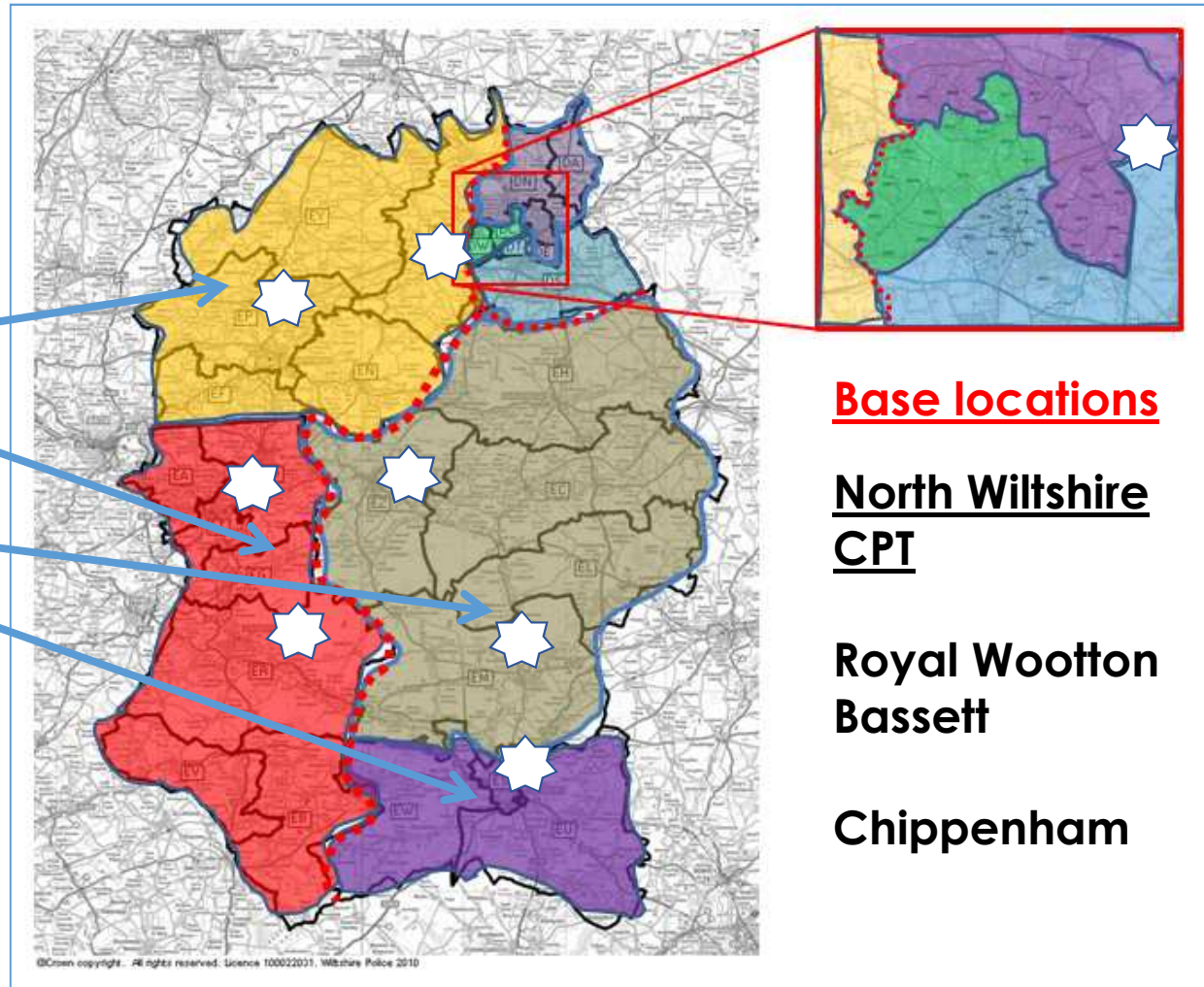
Wiltshire West

Wiltshire East

Wiltshire South

Swindon North

Swindon South



Base locations

North Wiltshire CPT

Royal Wootton Bassett

Chippenham

WILTSHIRE POLICE

Our purpose: To keep people safe and protect our communities



@wiltshirepolice



CPTs AND AREAS

- 5 Teams
- Operate 24/7
- Provide all uniform policing for North Wiltshire area from Chippenham and Royal Wootton Bassett
- Includes the towns of Chippenham, Corsham, Calne, RWB, Malmesbury, Cricklade and all surrounding villages
- Each team = 2 x Sergeants, 12 x PC's, 4 x PCSO's, 2 x LCI's
- 2 x Community Coordinators
- Supported by:

Community Tasking Team, CID, ARG, Roads Policing, Dogs, ASU, CSI

WILTSHIRE POLICE

Our purpose: To keep people safe and protect our communities



@wiltshirepolice

ANY QUESTIONS?



WILTSHIRE POLICE

Our purpose: To keep people safe and protect our communities



@wiltshirepolice