



# Melksham Campus Area Board, Sept 2019

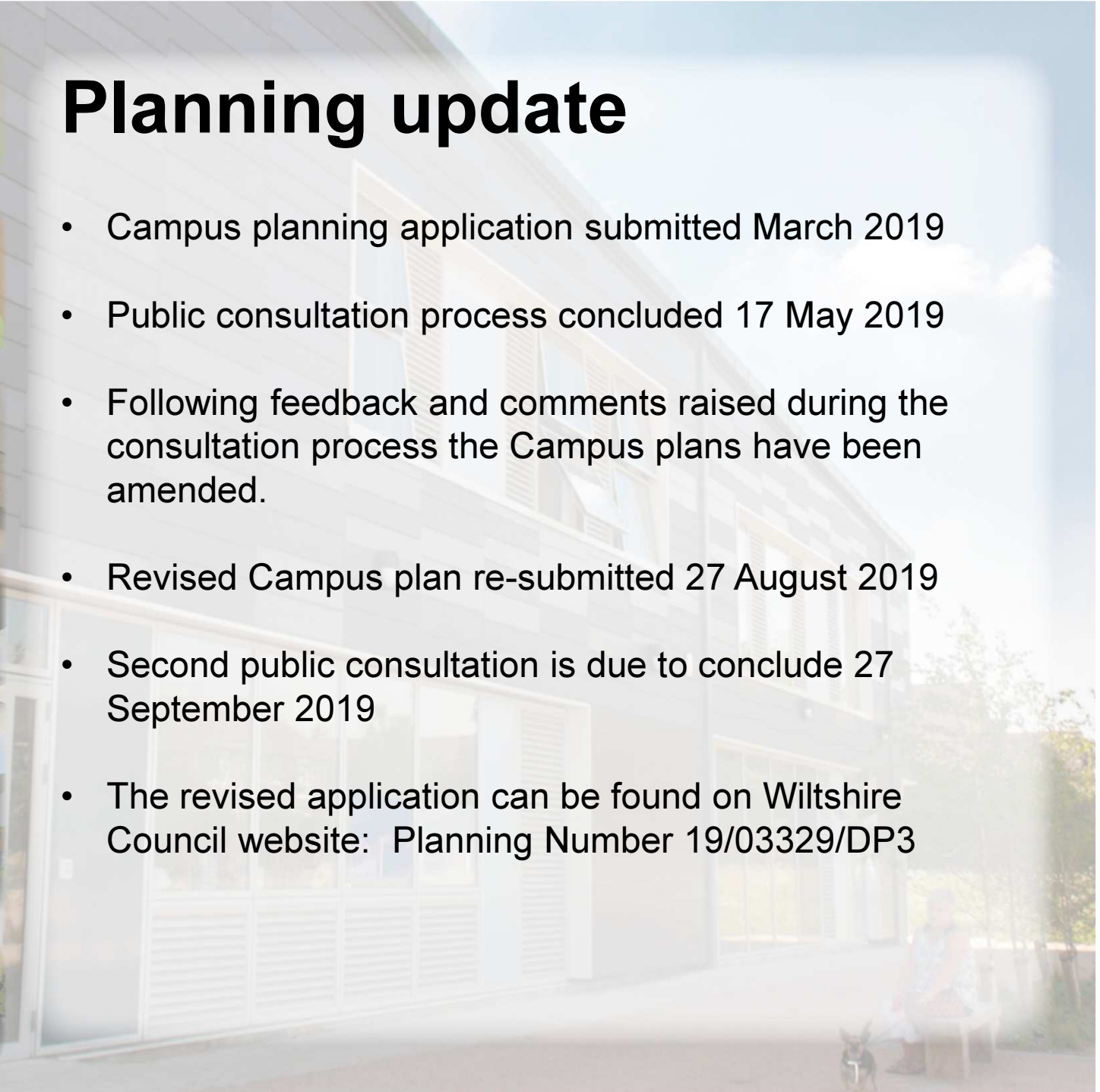


# Cllr Allison Bucknell and Louise Cary



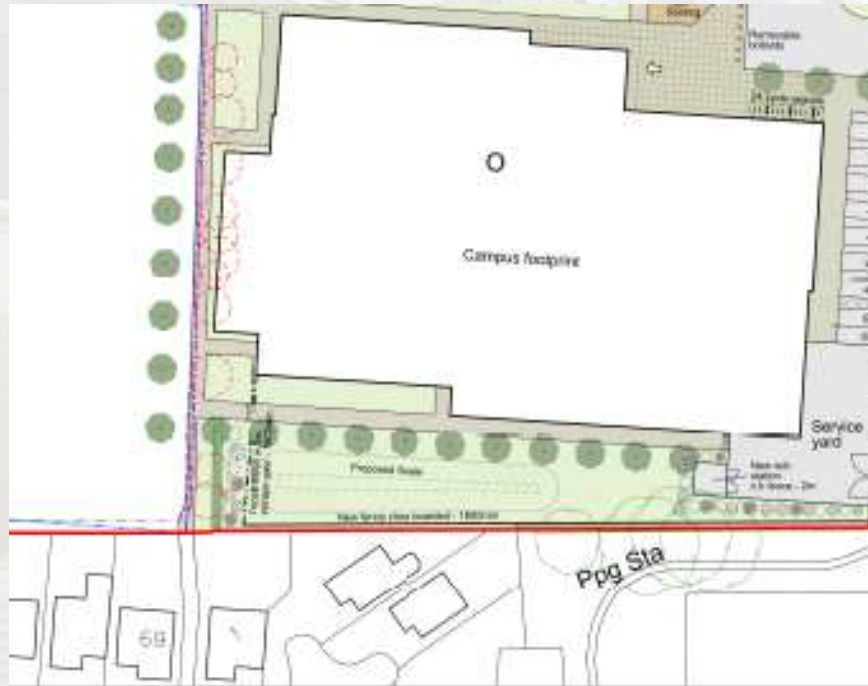
# Planning update

- Campus planning application submitted March 2019
- Public consultation process concluded 17 May 2019
- Following feedback and comments raised during the consultation process the Campus plans have been amended.
- Revised Campus plan re-submitted 27 August 2019
- Second public consultation is due to conclude 27 September 2019
- The revised application can be found on Wiltshire Council website: [Planning Number 19/03329/DP3](#)



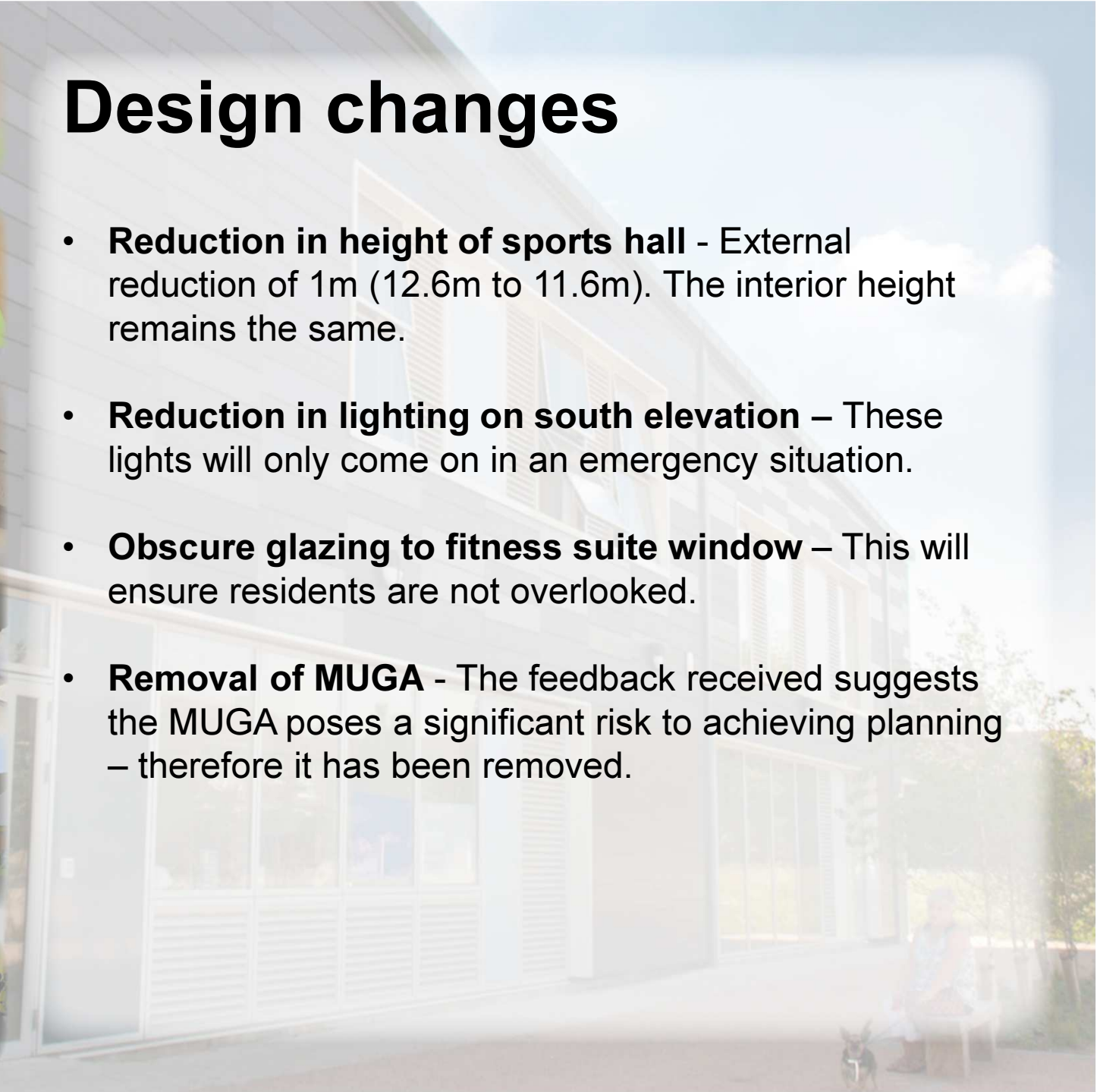
# Design changes

- **Sports hall moved further away from Cedar Close boundary - This has been achieved by relocating the hall stores to the West elevation and slightly reconfiguring internal accommodation.**



# Design changes

- **Reduction in height of sports hall** - External reduction of 1m (12.6m to 11.6m). The interior height remains the same.
- **Reduction in lighting on south elevation** – These lights will only come on in an emergency situation.
- **Obscure glazing to fitness suite window** – This will ensure residents are not overlooked.
- **Removal of MUGA** - The feedback received suggests the MUGA poses a significant risk to achieving planning – therefore it has been removed.



# Design changes

- **Heritage Light Fittings** – These will be installed on the approach to Melksham House. These fittings are the same as those in the Market Place and Melksham Highstreet.
- **Access Road** - The approach road and foot paths have been softened to reflect the 'parkland' settling.
- **Fencing** – Railings will be installed around the pond and wooden fencing will be used to enclose the service yard.

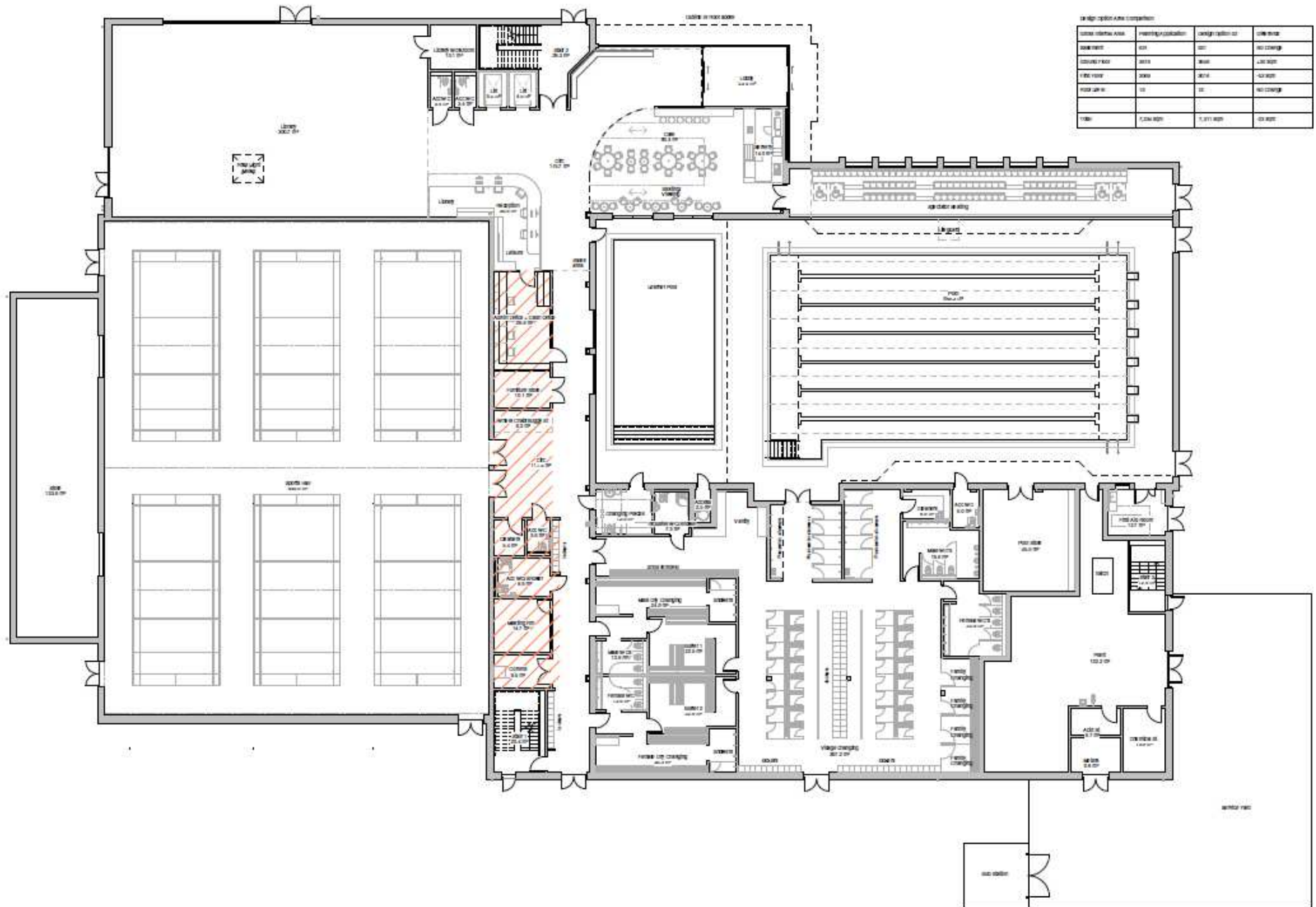


# Building Design

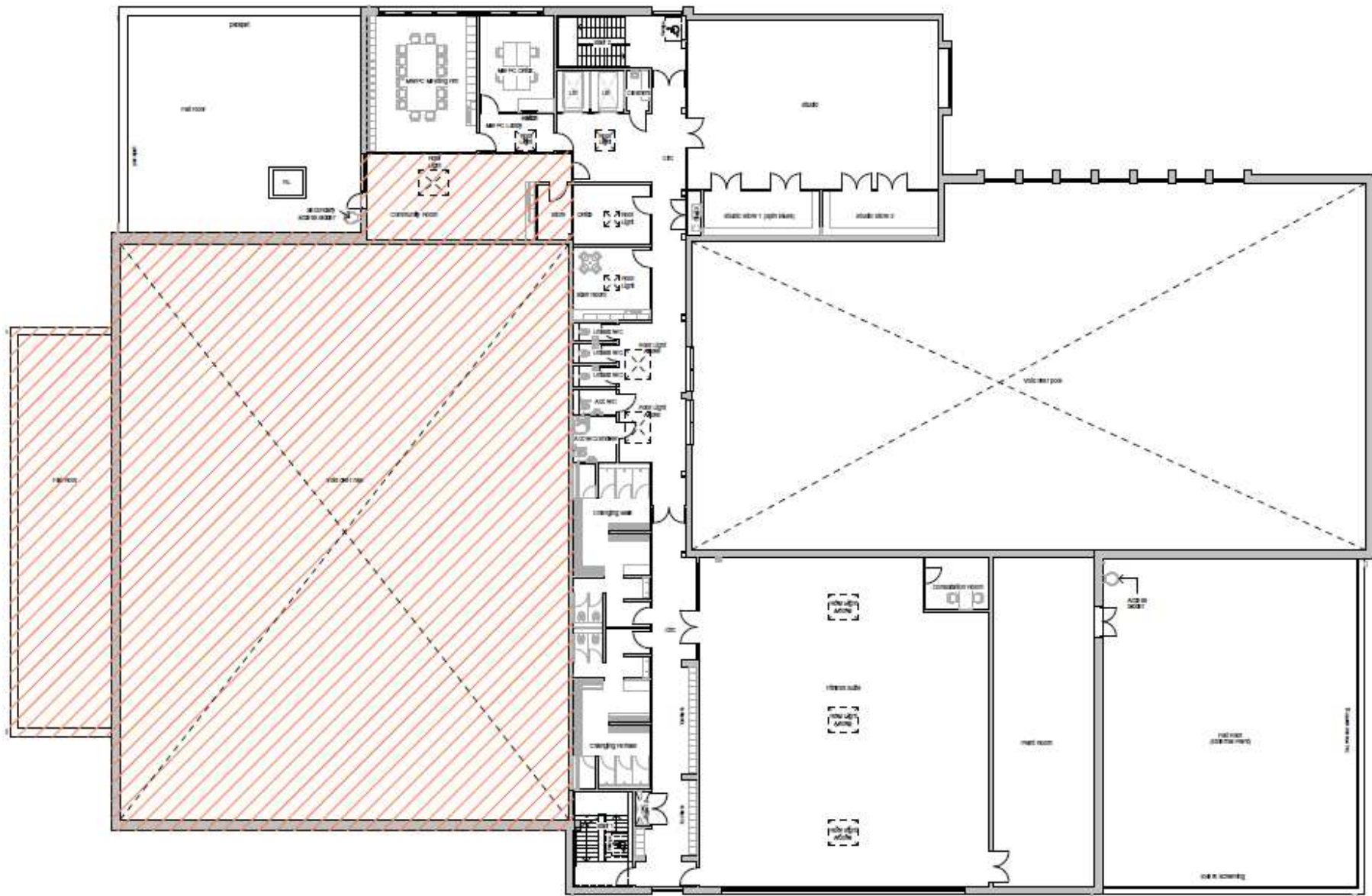
- The building finishes have been carefully considered to ensure the campus is both visually pleasing and sympathetic to its surroundings.
- The design further breaks down the mass of the campus by including recesses / steps in the facade and through the use of materials.
- Detailed proposals are available within the planning application.



# Ground floor plan



# First floor plan

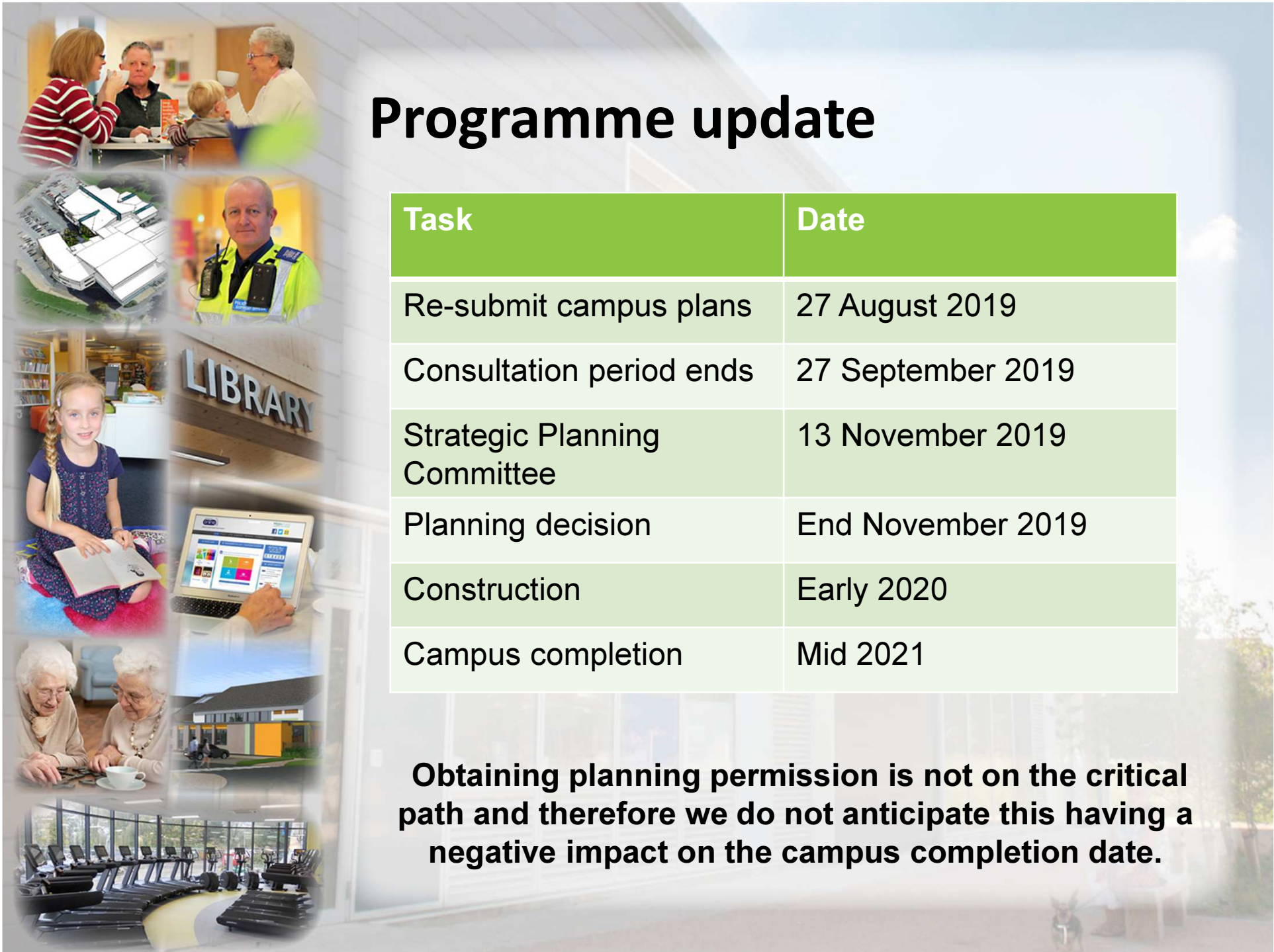




# Programme update

Task	Date
Re-submit campus plans	27 August 2019
Consultation period ends	27 September 2019
Strategic Planning Committee	13 November 2019
Planning decision	End November 2019
Construction	Early 2020
Campus completion	Mid 2021

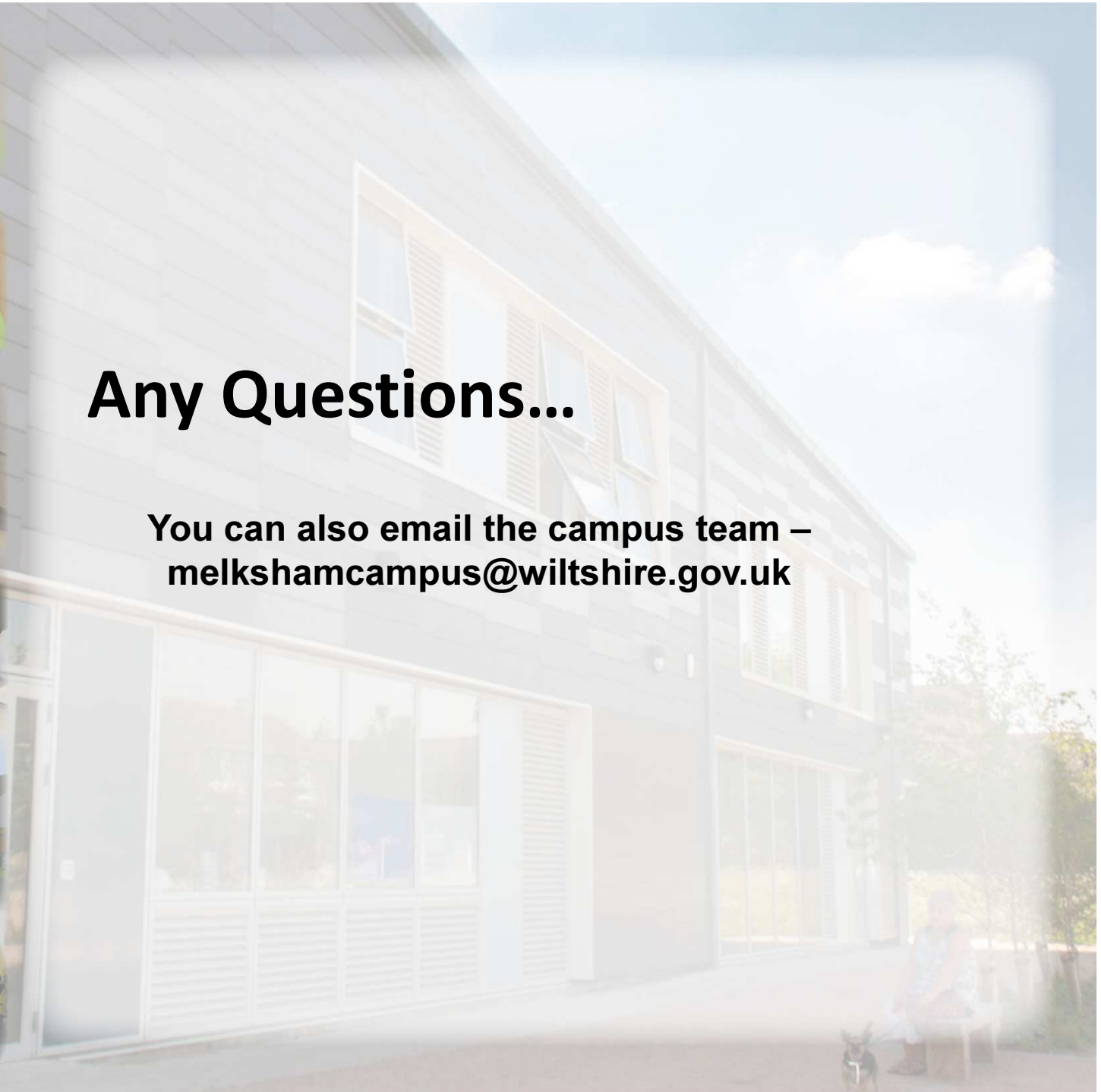
**Obtaining planning permission is not on the critical path and therefore we do not anticipate this having a negative impact on the campus completion date.**





# Any Questions...

You can also email the campus team –  
[melkshamcampus@wiltshire.gov.uk](mailto:melkshamcampus@wiltshire.gov.uk)



# Site plan

