

Town Clerk's Report 4th January 2017 to Policy & Resources Committee 10th January 2017

1. POLICY

1.1 Community Governance Review (CGR) – Steeple Ashton Parish Council and Trowbridge Town Council support a change to the boundary along Ashton Road, to include new development within the town boundary. We await a response from Wiltshire Council regarding the implementation of this change. The other changes are being implemented on 1st April 2017.

1.2 Government Proposal to Extend Referendum Principles for Excessive Council Tax Increases to Parish & Town Councils – In a statement to the House of Commons on 15th December, Secretary of State for Communities & Local Government, Sajid Javid announced that referendum principles WILL NOT be extended to Town and Parish Councils in 2017/18.

1.3 Free Parking Days (AGENDA ITEM 7)– Wiltshire Council have confirmed that the arrangements will be the same in 2017 as 2016, an allocation of 1548 free day spaces, the following is suggested:

CAR PARK	Sat 24 th June	Sat 15 th July	Fri 20 th Oct	Sat 21 st Oct	Sat 25 th Nov	Sat 2 nd Dec
Bradford Rd	24	24	24	24	24	24
Broad St	33	33			33	33
Church St	36	36			36	36
Court St	78	78	78	78	78	78
Lovemead	165	165			165	165
Sub-total	336	336	102	102	336	336
TOTAL						1548

RECOMMENDATION:

- a) That the Committee approves Saturday 24th June 2017 (Armed Forces Day) and Saturday 15th July 2017 (Play Day) as free parking days in the Bradford Road, Broad Street, Church Street, Court Street and Lovemead car-parks, making all council car-parks free of charge on these days.
- b) That the committee approves the allocation of Bradford Rd and Court Street car-parks for two days for the Carnival fun fair on Friday 20th and Saturday 21st October 2016.
- c) That the committee approves Saturday 25th November (Christmas Lights switch-on) and Saturday 2nd December 2017 (Christmas shopping) as free parking days in the Bradford Road, Broad Street, Church Street, Court Street and Lovemead car-parks, making all council car-parks free of charge on these days.

1.4 Draft Public Service Ombudsman Bill – The National Association of Local Councils (NALC) reported that on Tuesday 6th December the Cabinet Office (CO) published a draft Public Services Ombudsman Bill which will abolish the Parliamentary and Health Service Ombudsman and the Local Government Ombudsman (LGO) and create a new Public Services Ombudsman; the new body will bring existing functions together with the aim of improving access to the Ombudsman's services by allowing for all complaints to be made with or without the help of a representative and in a variety of formats to meet the digital age, provide simpler access to individuals who believe that they have suffered injustice or hardship and share the learning from failures to improve services for everyone. While the current LGO does not cover parish and town councils, it has long been NALC policy that its remit should be extended to cover our sector and the Bill proposes to do

just this! NALC are in touch with both the CO and DCLG about the proposals especially the timescale as there are no details on this.

2. FINANCE

2.1 Risk and Audit Panel (AGENDA ITEM 13) – Met on 3rd January 2017 (copy attached).

2.2 Budget 2017/18 (AGENDA ITEM 8) - The proposals show an increase in total net expenditure of £116,559 from £1,507,174 (2016/17) to £1,624,251 (2017/18)

2.2.1 Localisation of Council Tax Support Grant – Wiltshire Council has advised that this will reduce from £16,898 (2016) to £0 in 2017.

2.2.2 Community Infrastructure Levy – Although no CIL has been received yet, there have been some recent developments in the town which are CIL chargeable and therefore the budget includes a forecast income of £7,590 for 2017/18 from CIL.

2.2.3 Council Tax Base – This is expressed as 'Band D' equivalents, any changes account for new houses built in the past year, transfers due to the boundary change being implemented on 1st April 2017, single person discounts and other adjusting factors, it has increased by 522.77 (4.9%) from 10671 (2016) to 11195. This generates an additional £73,000 of council tax at 2016/17 rates.

2.2.4 Inflation – The September Consumer Prices Index (CPI) was +1.0% and the Retail Prices Index (RPI) was +2.0%.

2.2.5 Government Referendum Principles for Excessive Council Tax Increases – The government has decided not to impose these restrictions on Parish & Town Councils in 2017/18. The limits applicable to; District Councils are the higher of £5.00 or 2% on the Band D Council Tax Charge and to Wiltshire Council is 5%, (2% general increase and 3% Social Care Precept.)

2.2.6 Departmental Ongoing Activities Revenue Budgets: An overall increase of £96k.

100 MUSEUM – An increase of £2k.

200 LEISURE SERVICES – An increase of £75k accounted for by the implementation of the Pay & Grading Review and the take up of the pension following auto enrolment.

400 POLICY & RESOURCES – A decrease of £21k; a decrease of £13k on 401 Democratic, an increase of £1k on 402 Mayor accounting for the purchase of new robes, an increase of £13k on 403 Grants to account for additional support for TCAF, Trowbridge Arts and the restatement of Trowbridge In Bloom Grant and a decrease of £23k on 410 Finance and Admin accounting for staff changes and the restatement of Postage and Printing (now in Civic Centre Building).

500 DIRECT SERVICES – A decrease of £2k, accounting for the freehold purchase of Woodmarsh, improved income at Longfield, offset by increased costs of maintaining the Park.

600 CIVIC BOARD – An increase of £42k includes maintenance, information technology, Bowyer Room conversion and restatement of Printing and Postage. The costs of running the building are shared between those departments using the building based upon their office space.

2.2.7 Project Budgets – An increase of £5k.

Museum Project – Remains at £25k for 2017/18 (rising to £50k by 2021/22).

Sports Pitch Project – A £5k allocation for 2017/18 (rising to £50k by 2021/22).

CATG Projects – Remains at £10k for 2017/18 (rising to £30k by 2021/22).

Investment in Play Areas – Allocation planned from 2018/19. Costs in 2017/18 covered by Wiltshire Council payments, reserves and S106 contributions.

Investment in other street assets – Allocation planned from 2018/19.

Park Storage – Funded from savings in revenue budget.

2.2.8 Additional Revenue Activity – An increase of £45k.

Street Cleaning – An allocation of £5k to allow for increased activity levels and transfer from Wiltshire Council.

Closed Churchyards – An allocation of £7k for grass cutting, tree and wall maintenance.

Car Parks – No allocation, as expected to be break even or make a net contribution.

Asset Transfers – An allocation of £33k to cover grass cutting and other maintenance.

2.2.9 Reserves - The planned contribution to reserves is reduced to £3,551 for 2017/18, with higher contributions to reserves planned for 2018/19 through to 2021/22, to bring General Reserves up to 25% of net revenue expenditure.

	31st March 2016	30th Sept 2016
Museum Project	£61,000	£36,000
Recreational Play Areas	£6,000	£6,000
Civic Centre	£20,000	£30,000
Sports Pitch Development	£7,000	£7,000
Earmarked Reserves	£94,000	£79,000
General Reserve	£186,000	£179,000
Total Reserves	£280,000	£258,000

RECOMMENDATION:

a. BUDGET

- i. That the Committee approves the Revenue Expenditure Budgets for 2017/18 as detailed on the budget spreadsheets, totalling £1,538,290
- ii. That the Committee approves the Project Budgets for 2017/18 totalling £40,000
- iii. That the Committee approves that the contribution to General Reserves for 2017/18 be £3,551
- iv. That the committee approves additional Revenue Activities Budgets for 2017/18 as detailed on the budget spreadsheets, totalling £45,000
- v. That the Committee recommends to Council therefore a total budget requirement of £1,626,841
 And that this is funded in part through estimated income for 2017/18 from Community Infrastructure Levy of -£7,590
 Leaving a net precept requirement for 2015/16 of £1,619,251
 Which results in an increase of £5.00 (within the government's limit for District Councils) on the Trowbridge Town Council 'Band D' Council Tax Charge, to £144.64
 Which is less than £2.79 per week.

b. FIVE-YEAR FINANCIAL PLAN:

That the committee notes the five-year financial plan which accompanies the budget.

3. PERSONNEL

3.1 New Starters:

Rachel Holtham, Collections Assistant (Museum) part time. Started 1st December.

Aisha Baker, Assistant Learning and Outreach Officer part time. Started 1st January.

3.2 Leavers:

Rebecca Pierce, Sports Coach, leaves January 2016

3.3 Contract changes:

Karen Reeves, from Direct Services Administrator to Civic Centre Admin Officer in December.

3.4 HR Policies – No changes this month.

3.5 Job Evaluation – The Pay and Grading Review has now been implemented and is fully factored in to budget for 2017/18 and the five-year financial plan.

3.6 Investors In People – I am pleased to report that the Town Council has once again been reaccredited for a further three years as an Investor In People.

4. TOWN COUNCIL SERVICES

4.1 MUSEUM & TOURISM – The next committee meeting is 28th March 2017 at 6.30pm.

4.1.1 Museum Project – The mid-term review meeting was held with the Heritage Lottery Fund on 1st December and they confirmed that the project can move to a second-round bid in Spring 2017, with an increase to cover a contribution towards the new lift shaft. The five-year financial plan shows that the Town Council can fund the Museum Expansion Project from an HLF grant, grants from other funders and borrowing. The level of borrowing will be around £900,000 funded from a £50,000 per annum contribution from the Council Tax over 25 years.

4.2 LEISURE SERVICES - The next committee meeting is 28th March 2017 at 7pm.

4.2.1 Sports Pitches Project – We have borrowed £175,000 from the Public Works & Loans Board towards the purchase of Woodmarsh. The loan will be financed from the rent charged to Trowbridge Town Football Club over a proposed 30-year lease. Wiltshire Council is releasing the remaining funding, including Stamp Duty and fees, from S106 funds. The five-year financial plan shows that the town council can sustain an annual contribution towards the project, increasing to £50,000 (2021/22), enabling the town council to borrow a further circa £1.4million over 50 years. This would facilitate a contribution towards the purchase of additional land and development of the land at Devizes Rd to provide grass and all-weather pitches, car-parking and changing rooms. Other funding is available from S106 and from grants such as the Football Foundation. We are also in discussion with other sports including Trowbridge Squash Club and will seek to realise additional developments in conjunction with them as part of the development of Devizes Rd.

4.3 DIRECT SERVICES – The committee next meets on 28th February 2017.

4.3.1 Civic Centre – The Civic Board next meets on 14th February 2017.

4.3.2 Town Park – Refurbishment of Tennis Courts – We have received confirmation of funding from the Lawn Tennis Association (LTA) of £36,200 towards the refurbishment of the three tennis courts in the Park as well as the Multi-Games court. A Business Plan for this project was presented to the committee at the December meeting. Match funding is now being sought from the Area Board and other funders. Work is expected to be complete during the Spring. The courts will be controlled by an internet app and charges are expected to raise sufficient funding to cover maintenance and future refurbishment.

4.3.3 St George's Works – Officers agreed the detailed design of the access and storage areas following approval at the last meeting and the owners have now made a planning application.

4.3.4 Play Areas, Transfer from Wiltshire Council – The Head of Direct Services (Bill Austin) has negotiated the best available deal for the transfer of the 24 play areas from Wiltshire Council. 21 play areas and the whole of Elm Grove Recreation Ground will transfer to the town council's responsibility during March 2017. The three play areas in the boundary change land will transfer on 1st April 2017 (Painter's Mead, Paxcroft Brook and Old Farm). Between now and transfer, Wiltshire Council will ensure that they are all safe, working and grass and shrubs maintained and cut-back. The town council will be paid £50,000 to invest in improving the facilities as part of a planned programme over the five-year financial plan, with contributions from existing S106 funding, grants

and an annual contribution from the town council of £10,000 to £50,000. In total the five-year financial plan shows an investment in play areas of £340,000

4.3.5 Closed Churchyards – Following the resolution at the last meeting we are in discussion with Wiltshire Council regarding the arrangements for transfer of responsibility for maintenance of the three closed churchyards.

4.3.6 Brook Road Multi-Use Games Area (AGENDA ITEM 9) – Last year Walwayne Court asked us to close the MUGA to reduce anti-social behaviour and damage to school property. The school has now asked that we close it permanently by ending our lease with Wiltshire Council.

RECOMMENDATION: That the Town Council requests that we end our lease for the Brook Road Multi-Use Games Area to allow it to revert to school use.

5. MARKETING & EVENTS

5.1 Calendar of Events (please see attached at the end of the report).

5.2 Website – The Town Council web-sites: www.trowbridge.gov.uk provides information about council services and links to other Trowbridge web-sites; www.trowbridgecivic.co.uk for Civic Centre, events and activities & www.trowbridgemuseum.co.uk for the Museum.

5.3 Magazine – Our marketing partners RACS completed the Spring edition, published in December covering the period January – April 2017 including information about the forthcoming elections. Further editions will be Summer, published in April to cover the period May – August and Autumn, published in August to cover the period September – December.

6. TOWN DEVELOPMENT – Committee Meets 24th January and 14th February.

6.1 Town Centre Developments

Cradle Bridge – MRMU Ltd M&S Food, Toby Carvery, Firezza, Greggs, Subway, Dominos and parking for 150; due to open in February. The cycle/footbridge from St Stephen's Place was installed in November.

Bowers – www.innoxmills.co.uk are expected make a mixed-use application in 2017.

6.2 Housing – These sites are being developed or coming forward for development.

Southview Park Wain Homes revised application 16/00547/FUL for 91 houses off Drynham Lane.

Castle Mead Persimmon application 16/03420/FUL for 272 more homes up to Green Lane Wood

The Pastures Abbey New Homes 174 new homes nearing completion.

Ashton Road Taylor Wimpey have made an application for 250 homes 16/04468/OUT

Ashton Park Mainly in West Ashton and North Bradley Parishes, application 15/04736/OUT for 2,500 houses, employment, 2x local centres, 2x primary schools, secondary school, ecological visitor facility, open space and A350 West Ashton & Yarnbrook improvement is being assessed.

Bradley Road – The former District Council office site is under offer from Newland Homes subject to planning permission, potentially providing around 80 new homes.

Hilperton Gap Framptons submitted a revised application 16/00672/OUT for 180 houses on land in the west of the Gap, accessed off Elizabeth Way. The Town Council has objected.

Charterhouse - McCarthy & Stone now have permission 16/03974/FUL for development of the site on Seymour Rd to provide 40 apartments.

6.3 White Horse Business Park – Following the Prior Approval application to convert The Pavillions to residential the owners and Wiltshire Council have agreed a plan of action to seek a commercial use for the building. If this is not successful, the residential conversion will be allowed.

6.4 Wiltshire Local Development Framework

6.4.1 Housing Site Allocations Plan – Further delays mean that the process will not now recommence (with full public consultation by Wiltshire Council) until mid-2017. The latest Housing

Land supply figures show that in the North and West areas Wiltshire is still failing to meet 5.25 years of housing land supply. The figure is 5.13 years (with the south at 5.69 and the East at 8.27). Wiltshire Council says, "Additional sites will therefore need to come forward in suitable locations between now and 1 April 2017, in order to maintain sufficient supply."

7. TROWBRIDGE PARTNERSHIPS

7.1 [Transforming Trowbridge](#) – The Town Council is the accountable body.

7.2 Trowbridge Town Team – The Town Council is the accountable body.

7.3 Trowbridge Community Area Future (TCAF) Lindsey Millen is the TCAF officer, supported by the Youth Work Team head by Sarah Holland, with Fadwa Bakali and Zoe Copper. They are working with partners to address priorities identified in the Joint Strategic Assessment in localities in the 10% (Studley Green) and 20% (Seymour/Adcroft and Longfield) nationally most deprived communities. TCAF has also receives funding from a range of funders including the LYN via the Area Board to provide youth workers as well as an annual grant from the town council.

7.4 BA14 Culture – The cultural coordinating group continues to meet with representation from Trowbridge Museum.

7.5 [Chamber of Commerce](#) – Andy Barlow is Chairman of the Chamber executive.

7.6 [Trowbridge Talking News](#) – service for the visually impaired, TIC is the drop off point.

7.7 [Selwood Housing](#) is the main social housing provider in Trowbridge. Their winter newsletter is available by following the link.

8. WILTSHIRE

8.1 Wiltshire Council - The [parish newsletter](#) is published weekly and circulated to members.

8.1.1 Area Board – Next meeting is Tuesday 10th January 7pm at County Hall. Community Engagement Manager for Trowbridge, Mary Cullen compiles the [Community Area Web Site](#)

8.1.2 Local Youth Network – Local Youth Facilitator, Emma Drage manages grant applications for youth projects in Trowbridge, Melksham & Bradford on Avon. The LYN Management Group considers grant applications and makes recommendations to the Area Board.

8.1.3 Trowbridge Area Wellbeing Centre (Campus) – Wiltshire Council is progressing options and timetable, with health services wishing to make early progress. This is reflected in the One Public Estate funding from government.

8.1.4 Market Towns Network – Was held in Melksham on 17th November.

8.1.5 Asset & Service Delegation – In addition to play areas and closed churchyards covered elsewhere, the expectation is that Wiltshire Council will discuss in 2017/18 a cost-neutral package of assets and services for transfer to the town council. The town council seeks to include recreation grounds, amenity grass, open spaces, bus shelters, the management and control of car-parks and street cleaning services. These have been factored in to the five-year financial plan. The Town Council would also be interested in the delegation of street trading licensing. It is expected that discussions will commence following the elections in May.

8.1.6 Community Area Transport Group (CATG) – Meets on 5th January 2017.

The Town Council provided funding for schemes in 2016/17:

Budget 2016/17	£10,000.00
Dropped Kerb Green Lane	£464.32
College Road 20mph zone	£1,250.00
Waiting Restrictions	£500.00
Grove School	£1000.00
PSPO Signage	£1,000.00
<u>Cycle Path Hulbert Close</u>	<u>£1,000.00</u>
Remainder	£4,785.68

20mph Zones, College Estate - The town council has contributed £1,250 for this project. This Order is being advertised from 16th December to 16th January and will then be implemented.

Cycle Paths – The town council contributed to links from Hulbert Close to Faverole Way, Quarterway Lane, the south side of Paxcroft School and Ashton St to Paxcroft Brook. The Town Council has also allocated £5,000 for a cycle path from John of Gaunt to Lambrok Road along the south side of Wingfield Rd, with other funding from Wiltshire Council's major project fund. This will not now be completed until 2017/18 so any remaining funds from this year will be carried forward. Town Development committee recently reviewed the plans.

Dropped Kerb, Green Lane – Cllr Oldrieve has requested further dropped kerbs on Green Lane which will be included in the list for consideration in 2017.

Waiting Restrictions – The Order for the implementation of the council's top ten 2015 list has been published for consultation from 25th November to 19th December. This includes; Baydon Close, Westcroft St and Charles St, Upper Conigre, Keats Close, Seymour Rd, St James' Gdns, The Down, The Moldens, Waterworks Rd and Wingfield Rd. The order for the experimental changes in **Hazel Grove**, went operational on 19th December and lasts until June, when a permanent order is expected to be implemented. The list for 2016 was considered at Town Development on 13th December and includes; Ashton St/Larkdown/Heathershaw, Barons Ct/Green Ln, Gloucester Rd, Hungerford Ave, Orchard Ct, Springfield Pk and West Ashton Rd/Broadcloth Ln.

8.1.7 Parish Steward – the scheme was reintroduced in October with contractor, Ringway. The Town Council puts forward a top fifteen priority list from which five are completed each month.

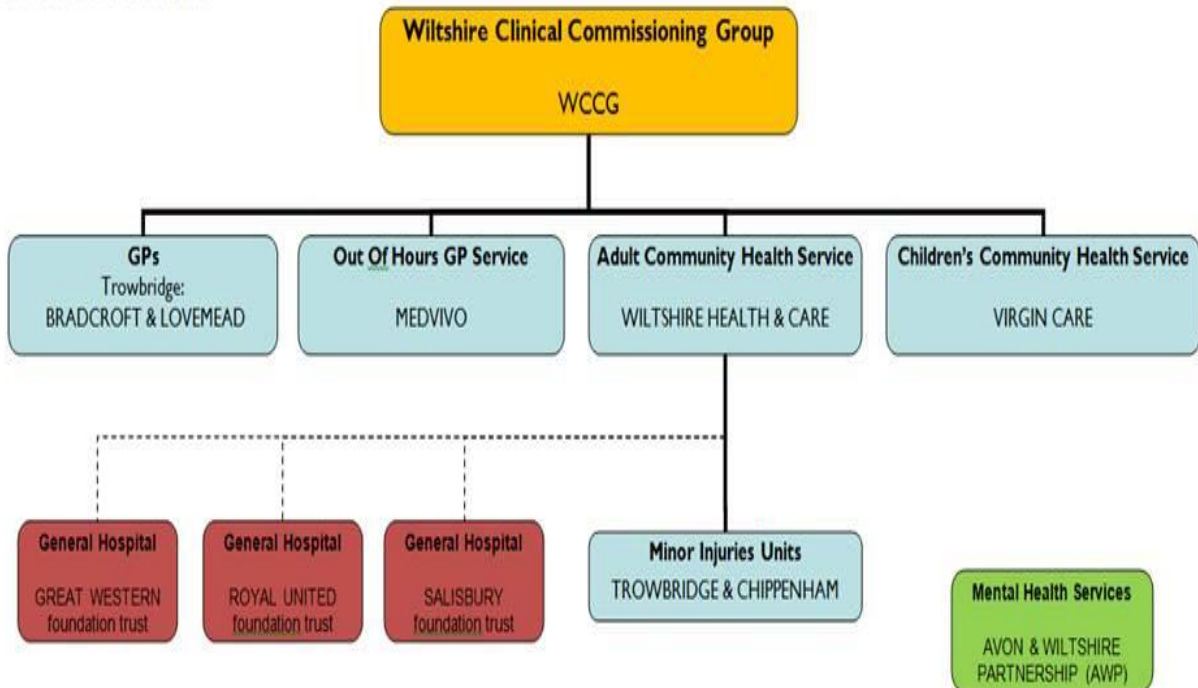
8.1.8 Joint Strategic Assessment (JSA) Event – Was held at County Hall on Monday 5th December to set priorities for the future of the Trowbridge Community Area.

8.2 Health Services

8.2.1 Bradcroft Surgery - Construction is ongoing, it will be one of two premises, with the additional merger with Widbrook surgery and closure of Bradford Rd.

8.2.2 Wiltshire Clinical Commissioning Group (WCCG) - Is responsible for deciding which organisations provide 'Primary Care' services (this is 'commissioning') to people living in Wiltshire and registered with Wiltshire GPs. Services include GPs, Out of Hours GPs, Community Hospitals, Community nursing, and in effect WCCG also funds referrals to General Hospital and other 'Secondary' care) services for those patients, via their GPs. Members were circulated with information and a brochure produced by WCCG and Wiltshire Health & Care (WH&C) following overnight closure of the Minor Injuries Unit (MIU) at Trowbridge Hospital. Andy Milroy and I recently met with representatives of [Wiltshire Health & Care](#). The brochure explains the arrangements for 24hour community services which are commissioned by the WCCG, some of which (adult health services in the community) are provided by WH&C. WH&C is a limited liability not for profit partnership of the three local Foundation Trusts (GWH, Swindon; RUH, Bath and Salisbury Hospital), copies are available in the TIC. Opening hours at Trowbridge Minor Injuries Unit were cut by 56 hours a week from 1st December. The decision to reduce the 24-hour service to 7am-11pm, is put down to lack of patients and difficulty maintaining staffing levels.

Health Services in Wiltshire



(The above is my own interpretation and may not be 100% accurate). Adult and Children's Community Services are split, with VIRGIN contracted to provide Children's and WH&C contracted for Adult services. WH&C runs the MIUs at Trowbridge and Chippenham, whilst MEDVIVO runs the Out Of Hours GP service which is accessed via telephoning 111.

8.3 Dorset & Wiltshire Fire & Rescue Service – Further information is available from www.dwfire.org.uk/.

8.4 Police and Community Safety – Inspector James Brain and Sgt Louis McCoy report regularly to Council. Councillors and the public are urged to sign up for [Community Messaging](#)

8.5 Wiltshire Association of Local Councils WALC – Newsletters are regularly circulated.

9. CIVIC & DEMOCRATIC ACTIVITIES

9.1 Council Meeting Dates - Council and committee meetings for the next few months are:

Tuesday 10 th January	Policy & Resources (Budget)
Tuesday 17 th January	Full Council (precept setting)
Tuesday 24 th January	Town Development
Tuesday 31 st January	NO MEETING
Tuesday 7 th February	NO MEETING
Tuesday 14 th February	Town Development
Tuesday 21 st February	NO MEETING
Tuesday 28 th February	Direct Services
Tuesday 7 th March	Policy & Resources (Third quarter accounts)

9.2 Dates for your diary 2017.

Cow Parsley Charity Fundraiser 60s Night in aid of the Mayor's Charity – Sat 4th March

Mayor's Civic Dinner & Dance – Saturday 18th March

Three Peaks Challenge – 27th April – 1st May in aid of Mayor's charities – please sponsor eight of our staff who are funding themselves and taking annual leave to participate.

www.justgiving.com/crowdfunding/TrowbridgeTeds3peaks

9.3 Twinning

9.3.1 Leer/Germany – Trevor Heeks, our Town Crier, was presented with the official Herold of Leer by the Mayor of Leer, Beatrix Kuhl during the visit in October, which hit the press in Leer!

9.3.2 Charenton/France – Monsieur Herve Gicquel is the new Mayor of Charenton, following the resignation of Monsieur Bretillon.

9.3.3 Eblag, Poland – Councillor Brice and Sylvia Zukowska visited Eblag recently at their invitation for a few days to participate in an annual event which encourages children with learning disabilities to participate in activities and theatre productions.

If you receive this report electronically the links in each section will take you to the relevant web page for more information about that organisation or project. If you want to be added to the e-mail circulation list, please contact the Town Clerk. The report is published six times per year at the end of December, February, April, June, August and October.

Lance Allan, Town Clerk
Trowbridge Town Council,
The Civic Centre,
St Stephen's Place,
TROWBRIDGE,
Wilts,
BA14 8AH

01225 765072
info@trowbridge.gov.uk
@Trowbridgegov
#DiscoverTROWBRIDGE
www.trowbridge.gov.uk
www.trowbridgecivic.co.uk
www.trowbridgemuseum.co.uk



Trowbridge Town Council Events

Please call reception on 01225 765072 with any questions or for booking information

Every Monday

Civic Centre

Ginger Jive

All welcome
20:00 – 23:00
Pay on the door £7

Every Monday

Civic Centre

Fit Steps

All welcome
19:00 – 20:00
Pay on the door

Every Monday

Civic Centre

Zumba

All welcome
18:30 – 19:15
Pay on the door £5

Every Monday

Active Trowbridge

Active Kickers (term time)

Civic Centre
2.5 years – 4 years
10:30 – 11:15
Book in advance

Every Monday

Active Trowbridge

Football Frenzy (term time)

John of Gaunt School
5-15 years
17:00 – 18:00
Book in advance

Every Monday

Active Trowbridge

Active Tots (term time)

Civic Centre
Ages 16 months – 2.5 years
09:30 – 10:15
Book in advance

Every Tuesday

Active Trowbridge

@Dance (term time)

John of Gaunt School
9-16 years
17:00 – 18:00
Book in advance

Every Wednesday

Civic Centre

Zumba

All welcome
18:00 – 19:00
Pay on the door £5.50

Every Wednesday

Active Trowbridge

Back to Netball (term time)

Walwayne Court
16+ years
09:30 – 10:30
Book in advance

Every Wednesday

Active Trowbridge

Netball (term time)

John of Gaunt School
9-14 years
17:00 – 18:00
Book in advance

Every Thursday

Active Trowbridge

Extreme Trowbridge (term time)

John of Gaunt School
11 – 16 years
17:00 – 18:00
Book in advance

Every Friday

Active Trowbridge

Active Ruggas (term time)

Longfield Community Centre
2-4 years
09:30 – 10:15
Book in advance

Every Friday

Active Trowbridge

Mini movers (term time)

Longfield Community Centre
16 months – 4 years
10:30 – 11:30
Book in advance