



** Parish Council

Local contact – PCSOs Ben Brown and Matt Till

Hello and welcome to this Community Policing report.

The New Year is well underway and over the coming months and into the future, Wiltshire Police will be continuing to develop its workforce model. The policing landscape that we face is ever more complex and challenging and within that is the reality of financial pressures that continue to present difficulties. With this in mind Wiltshire Police is committed to effective and efficient policing through making sure we have the right people with the right training in the right place. We have reinforced our efforts to embrace diversity, give everybody the opportunity to succeed and be inclusive in all we do. Ultimately, we do this to ensure that you are provided with the service that you expect.

Many of you may know that the Police and Crime Commissioner's Police and Crime Plan has been out for consultation. When finalised, it will set Wiltshire Police clear priorities and highlight opportunities for us to work to improve our service.

Over February Wiltshire Police was involved in a number of campaigns revolving around vulnerability as well as youth engagement and will participate in three national campaigns:

- 6-12 February: Sexual Abuse and Sexual Violence Awareness Week
For further information, to find support in your local area or to find details of awareness events happening near you, please visit www.sexualabuseandsexualviolenceawarenessweek.org
- 7 February: Safer Internet Day
- 27 February: Student Volunteering Week.
This event will give us an opportunity to promote our successful Volunteer Police Cadet scheme, which currently has units in Swindon, Chippenham, Trowbridge and Salisbury.

Additionally Wiltshire Police attended the Wiltshire Youth Summit, which will take place at Devizes School. We are also delighted to be welcoming police colleagues from across the South West region as it hosts a regional conference for the Black Police Association in February.

As always we are grateful your feedback; Wiltshire Police is here to serve you and we always like to hear what we have done well or where you think we could improve.

feedback@wiltshire.police.uk

COMMUNITY MESSAGING

Working with our local communities, we have been developing ways to reach out to all our communities and keep everyone up to date with the latest information that matters to you in your area.

Through feedback and working with our local communities, we have developed the use of <https://www.wiltsmessaging.co.uk/> and are now sending out daily updates around crimes that matter to you in your area. This is enabling us to reach as much of our community as possible, as quickly as possible and impart any new crime prevention advice or information about incidents that may affect you in your community that we feel you need to know about.

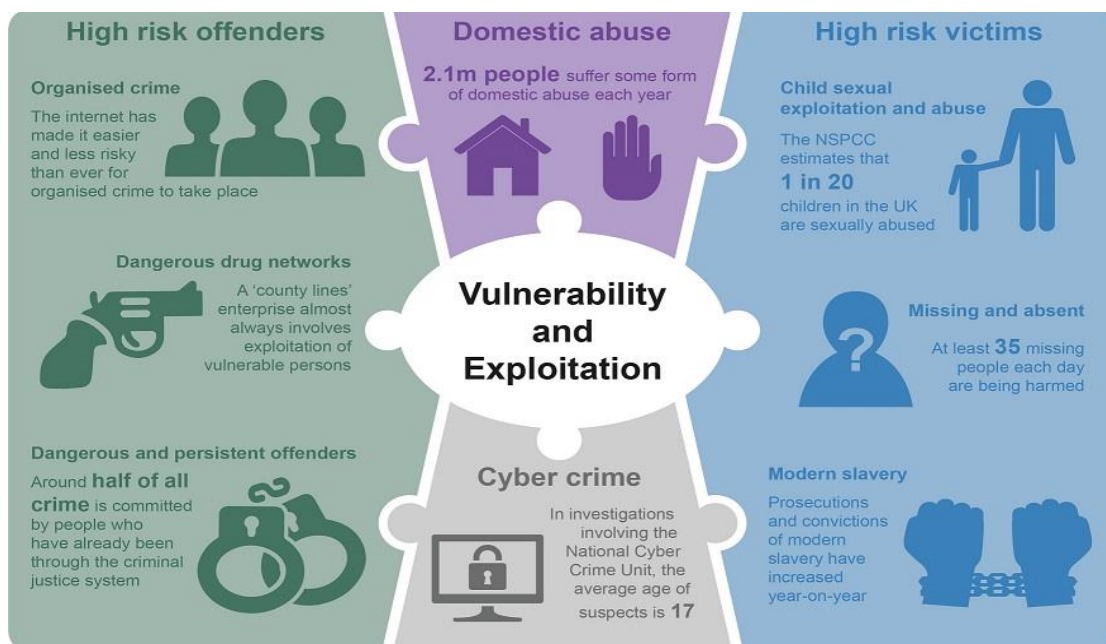
We have received some very positive feedback around this and encourage you to speak to all members of your community and encourage them to sign up to Wiltshire Messaging. It is free and a very good way of keeping all our communities connected.

<https://www.wiltsmessaging.co.uk/>

CONTROL STRATEGY

Below is our control strategy for your reference. This focuses on where how we conduct our operational Policing based on the Police & Crime Plan. We will continue to align our resources with the threat/harm/risks presented in line with the control strategy.

- Domestic abuse / Cyber Crime / High risk offenders / High risk victims



feedback@wiltshire.police.uk

CURRENT SECTOR SERIES/ Exceptions

Crime Exceptions are where the volume of crime exceeds the levels we would expect over a specified period. This is based on evaluation of data, over like to like periods historically.

The current Crime Exceptions for are dwelling and non-dwelling Burglaries, with non-dwelling Burglaries at nearly double the average for this time of year. The CPT are looking into these crimes and deploying resources accordingly. On a more positive note, our Theft offences are down, as well as Criminal Damage & Arson.

Local Crimes

Thank you for everyone's co-operation following two high profile incidents in Trowbridge in the past month. For the incident in Asda car park on the 9th February, a man has been arrested on suspicion of manslaughter, and released on bail until May pending further investigation. For the large scale disorder at the Albany Palace on the 12th February, a robust investigation is underway, though no arrests have been made yet.

For a detailed breakdown of the crime in your area visit...

<https://www.police.uk/wiltshire/>

Community Coordinator 3925 Alex Trombetta : alessandro.trombetta@wiltshire.pnn.police.uk

Deputy Sector Head Ps 1801 Louis McCoy : louis.mccoy@wiltshire.pnn.police.uk

Sector Head Insp 2517 James Brain : james.brain@wiltshire.pnn.police.uk

feedback@wiltshire.police.uk