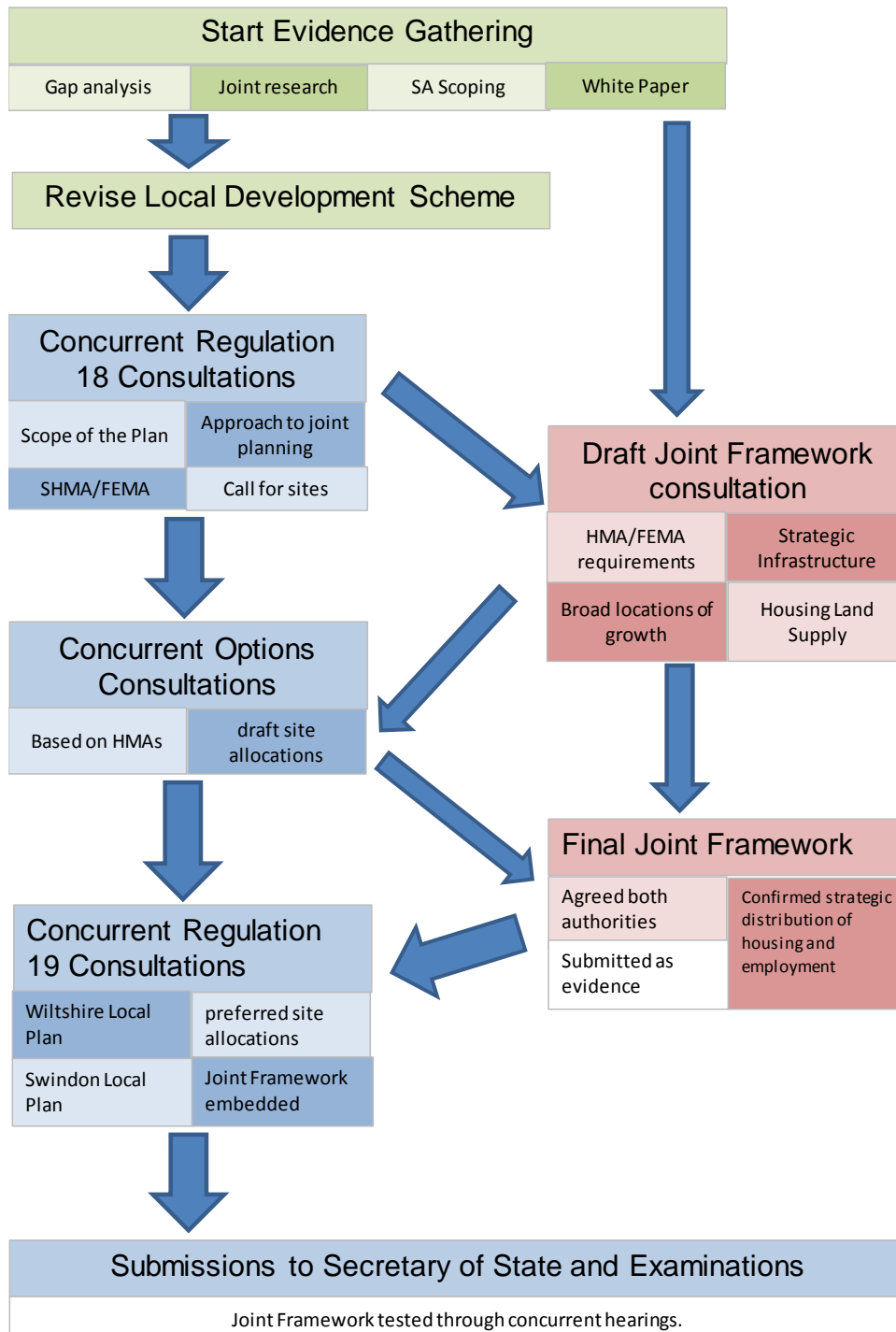


## Appendix 2: Process Diagram for Joint Working with Swindon Borough Council

### Key

Joint Framework stages

Aligned (but separate) Local Plan stages



**Appendix 3: Evidence likely to require work commissioned from third party organisations in relation to the Wiltshire Local Plan Review.**

Evidence	Required by
Transport Assessments	NPPF para 32: <i>All developments that generate significant amounts of movement should be supported by a Transport Statement or Transport Assessment</i>
Strategic Flood Risk Assessment	NPPF para 100: <i>Local Plans should be supported by Strategic Flood Risk Assessment</i>
Landscape Character Assessment	Paragraph 170 of the NPPF states <i>that where appropriate landscape character assessments should be prepared.</i>
Gypsy and Traveller Accommodation Needs Assessment	(National) Planning Policy for Traveller Sites
Air Quality	NPPF para 126: <i>Planning policies should take into account the presence of Air Quality Management Areas and the cumulative impacts on air quality from individual sites in local areas.</i>
Sustainability Appraisal	Section 19 of the Planning and Compulsory Purchase Act 2004 requires local planning authorities to carry out an appraisal of the sustainability of the proposals in each local development document. This should also incorporate the requirements of the Environment Assessment of Plans and Programmes Regulations 2004 (SEA Regulations).
Habitats Regulation Assessment	Required to assess whether the plan would have significant effects of European protected species or habitats (Conservation of Habitats and Species Regulations 2010).
Viability Assessments	NPPF para 159: <i>Establish the likely economic viability of land to meet the identified need for housing over the plan period.</i>

#### Appendix 4: List of Acronyms

DPD	Development Plan Document
FEMA	Functional Economic Market Assessment
GTAA	Gypsy and Traveller Accommodation Needs Assessment
JSEC	Joint Strategic Economic Committee (of the Swindon and Wiltshire Local Enterprise Partnership)
LDS	Local Development Scheme
NPPF	National Planning Policy Framework
SHMA	Strategic Housing Market Assessment
SWLEP	Swindon and Wiltshire Local Enterprise Partnership
WCS	Wiltshire Core Strategy