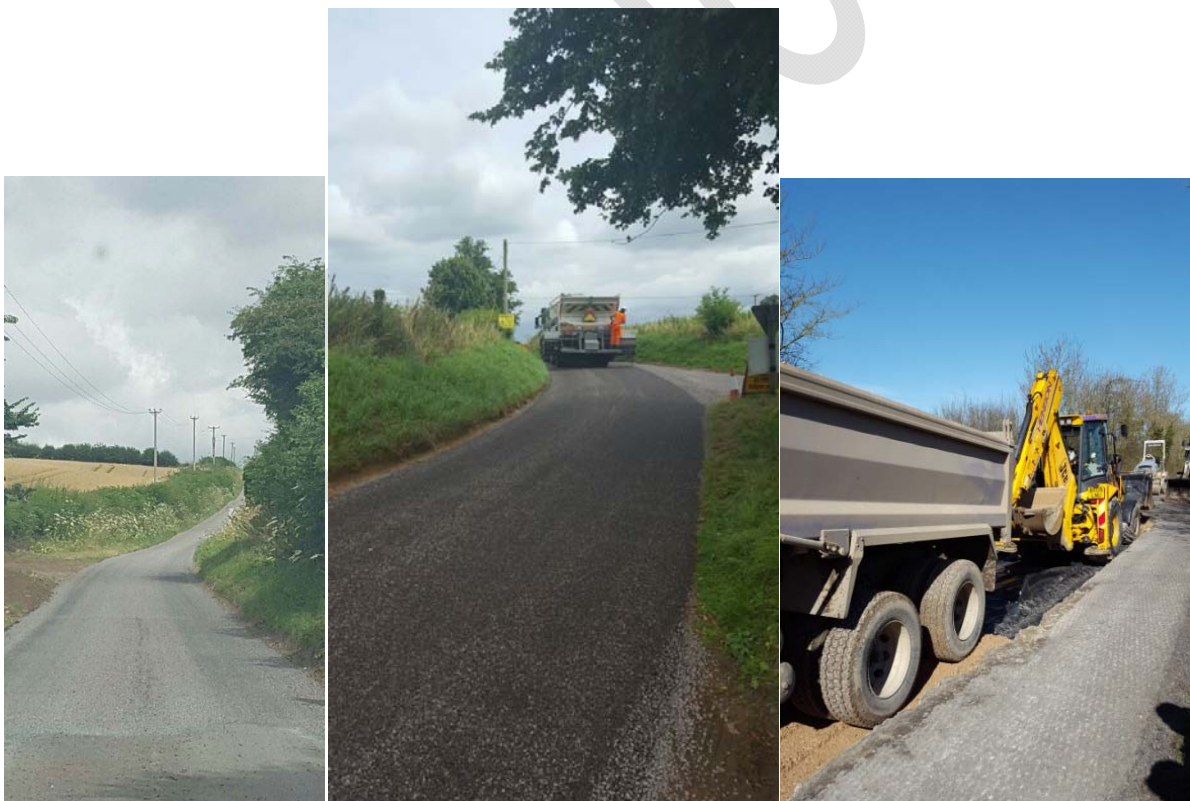


# Local Highways Investment Fund 2014 – 2020

## Provisional Scheme List 2018/19



Note: Scheme Lists are provisional as budgets for 2018/19 have not been confirmed

<b>Amesbury</b>		
<b>Road</b>	<b>2018/19 Schemes (DfT Local Highways Maintenance Funding)</b>	<b>Treatment</b>
A345	A345 Figheldean to Durrington	Surface Treatment
B3086	B3086 London Road, Shrewton	Surface Treatment
A345	A345 Workhouse Hill, Amesbury (Salisbury Road)	Surfacing
A338	A338 Cholderton (Carriageway Repairs)	Carriageway Repairs
A338	A338 Idmiston to Porton	Surfacing
<b>Road</b>	<b>2018/19 Schemes (Additional sites with Investment Fund)</b>	<b>Treatment</b>
A360	A360 Tilshead	Surfacing
Various	Various Footways	Renewal
<b>Road</b>	<b>Reserve or future years sites</b>	<b>Treatment</b>
A345	Countess Road South from A303 to Earls Court Rd Mini, Amesbury	Surfacing
UC	Berwick Lane, Steeple Langford	Surfacing
UC	Fisbury Rd & Kingsbourne Close, Winterbourne Dauntsey	Surfacing
A345	A345 Beehive Rbt to Winterbourne Gunner junc.	Surfacing
A3028	A3028 Bulford Double Hedges	Surfacing
B3086	High Street, Shrewton	Surfacing
A360	A360 Maddington St/Amesbury Rd, Shrewton	Surfacing
A3028	A3028 Larkhill Rd, Durrington leading to High Street, Bulford	Surfacing
C291	Elston Lane, Orcheston	Surface Treatment

**2018/19 Schemes (DfT Local Highways Maintenance Funding)** are those schemes which could be implemented with DfT Maintenance block and Incentive funding (£16,139,000).

**2018/19 Schemes (Additional sites with Investment Fund)** are the additional schemes which could be included with the full 'Local Highways Investment Fund 2014 – 2020' (£21,000,000).

Note: Scheme Lists are provisional as budgets for 2018/19 have not been confirmed

<b>Bradford on Avon</b>		
<b>Road</b>	<b>2018/19 Schemes (DfT Local Highways Maintenance Funding)</b>	<b>Treatment</b>
UC	Manor Lane, South Wraxall	Surface Treatment
UC	B3109 Rushy Lane to C231 Poorhouses	Surface Treatment
UC	Conkwell various 5 schemes	Surface Treatment
A366	A366 Wingfield Crossroads to Trowbridge	Surface Treatment
UC	Iford Hill, Westwood	Surfacing
A363	A363 Frome Road, Bradford on Avon (Junction Rd to Train Station), Bradford on Avon	Surfacing
<b>Road</b>	<b>2018/19 Schemes (Additional sites with Investment Fund)</b>	<b>Treatment</b>
C225	Church Lane, Freshford	Surfacing
Various	Various Footways	Renewal
<b>Road</b>	<b>Reserve or future years sites</b>	<b>Treatment</b>
UC	Poulton, Bradford on Avon	Surfacing
UC	The Star, Holt	Surfacing
B3108	Limpley Stoke Railbridge area	Surfacing
UC	Tynings Way/ Boswell Road/ Leslie Rise/ Hebden Road, Westwood	Surfacing
A363	A363 Masons Lane, Bradford on Avon	Surfacing
B3108	B3108 Winsley Hill	Surfacing
UC	Uplands Close, Limpley Stoke	Surface Treatment

**2018/19 Schemes (DfT Local Highways Maintenance Funding)** are those schemes which could be implemented with DFT Maintenance block and Incentive funding (£16,139,000).

**2018/19 Schemes (Additional sites with Investment Fund)** are the additional schemes which could be included with the full 'Local Highways Investment Fund 2014 – 2020' (£21,000,000).

Note: Scheme Lists are provisional as budgets for 2018/19 have not been confirmed

<b>Calne</b>		
<b>Road</b>	<b>2018/19 Schemes (DfT Local Highways Maintenance Funding)</b>	<b>Treatment</b>
UC	Studley Hill, Studley	Surface Treatment
C111/UC	Catcomb, New Zealand Area	Surface Treatment
A4	A4 Pewsham to A342 Derry Hill Junction - Phase 1	Surfacing
<b>Road</b>	<b>2018/19 Schemes (Additional sites with Investment Fund)</b>	<b>Treatment</b>
A4	A4 Pewsham to A342 Derry Hill Junction - Phase 2	Surfacing
Various	Various Footways	Renewal
<b>Road</b>	<b>Reserve or future years sites</b>	<b>Treatment</b>
A3012	A3102 Oxford Rd, Calne	Surfacing
A4	A4 London Rd Calne to Lower Compton (Sections)	Surfacing
A4	A4 Cherhill Village	Surface Treatment
C136	C136 Dumb Post to Hazelands to Studley	Surface Treatment

**2018/19 Schemes (DfT Local Highways Maintenance Funding)** are those schemes which could be implemented with DfT Maintenance block and Incentive funding (£16,139,000).

**2018/19 Schemes (Additional sites with Investment Fund)** are the additional schemes which could be included with the full 'Local Highways Investment Fund 2014 – 2020' (£21,000,000).

Note: Scheme Lists are provisional as budgets for 2018/19 have not been confirmed

<b>Chippenham</b>		
<b>Road</b>	<b>2018/19 Schemes (DfT Local Highways Maintenance Funding)</b>	<b>Treatment</b>
UC	Orchard Crescent, Chippenham	Surface Treatment
UC	Orchard Road, Chippenham	Surface Treatment
UC	Ripon Close, Chippenham	Surface Treatment
UC	The Firs, Chippenham	Surface Treatment
UC	Windsor Close, Chippenham	Surface Treatment
C171	C171 Days Lane, Kington Langley	Surface Treatment
A420	A420 Marshfield Road Arches to Park Lane, Chippenham	Surfacing
A420	Park Lane, Chippenham	Surfacing
A4	A4 Pewsham to Pewsham Way/London Road Roundabout	Surfacing
A420	New Road, Chippenham	Surfacing
C1	C1 Hullavington to Norton, Hullavington	Surfacing
<b>Road</b>	<b>2018/19 Schemes (Additional sites with Investment Fund)</b>	<b>Treatment</b>
UC	Cuttle Lane, Biddestone	Surfacing
UC	Kilverts Close, Chippenham	Surfacing
UC	Minster Way, Chippenham (Carriageway Repairs)	Carriageway Repairs
UC	Pew Hill Service Road, Chippenham	Surfacing
UC	Queens Crescent, Chippenham (Carriageway Repairs)	Carriageway Repairs
UC	St Marys St/Emery Lane, Chippenham	Surfacing
UC	The Oaks, Chippenham	Surfacing
UC	Willow Grove, Chippenham	Surfacing
UC	Old Road/Union Road, Chippenham	Surfacing
Various	Various Footways	Renewal

**2018/19 Schemes (DfT Local Highways Maintenance Funding)** are those schemes which could be implemented with DFT Maintenance block and Incentive funding (£16,139,000).

**2018/19 Schemes (Additional sites with Investment Fund)** are the additional schemes which could be included with the full 'Local Highways Investment Fund 2014 – 2020' (£21,000,000).

Note: Scheme Lists are provisional as budgets for 2018/19 have not been confirmed

<b>Road</b>	<b>Chippenham Reserve or future years sites</b>	<b>Treatment</b>
UC	Bath Road, Chippenham (Bridge Centre to Town Bridge)	Surfacing
A4	Bridge Centre Gyrotory Roundabout	Surfacing
UC	Canterbury Street, Chippenham (Carriageway Repairs)	Surfacing
UC	Westbrook Close, Chippenham	Surfacing
UC	Clift Avenue, Chippenham	Surfacing
UC	Conway Road, Chippenham	Surfacing
UC	Foundry Lane, Chippenham	Surfacing
UC	Hardens Mead, Chippenham	Surfacing
UC	Lackham Circus, Chippenham	Surfacing
UC	Ladyfield Road, Chippenham	Surfacing
UC	London Road Service Road, Chippenham (Hardens Mead)	Surfacing
UC	Loyalty Street, Chippenham	Surfacing
UC	Parkfields, Chippenham (Carriageway Repairs)	Carriageway Repairs
UC	Rowden Lane, Chippenham	Surfacing
UC	Southmead/Stockwood, Chippenham	Surfacing
UC	Westmead Lane, Chippenham	Surfacing
UC	Carnarvon Close, Chippenham	Surface Treatment
UC	Berkley Close, Chippenham	Surface Treatment
UC	Burleaze, Chippenham	Surface Treatment
UC	Coniston Road, Chippenham	Surface Treatment
UC	Greenway Lane 102-132, Chippenham	Surface Treatment
UC	Plantation Road, Chippenham	Surface Treatment
UC	Wood Lane, Chippenham	Surface Treatment
UC	Cocklebury Lane, Chippenham	Surface Treatment
UC	Birch Grove, Chippenham (Carriageway Repairs)	Carriageway Repairs
A420	A420 Broad Lane Allington to Bumpers Farm	TBC
UC	Bath Road Industrial Estate, Chippenham (Carriageway Repairs)	Carriageway Repairs

Note: Scheme Lists are provisional as budgets for 2018/19 have not been confirmed

<b>Corsham</b>		
<b>Road</b>	<b>2018/19 Schemes (DfT Local Highways Maintenance Funding)</b>	<b>Treatment</b>
C155	Lacock, Hither Way to A342 Sandy Lane	Surface Treatment
B3353	B3353 Gastard to Corsham	Surfacing
UC	Dickens Avenue, Corsham	Surfacing
<b>Road</b>	<b>2018/19 Schemes (Additional sites with Investment Fund)</b>	<b>Treatment</b>
C37	Church Rise, Neston	Surfacing
Various	Various Footways	Renewal
<b>Road</b>	<b>Reserve or future years sites</b>	<b>Treatment</b>
UC	A4 Copenacre, Corsham	Surfacing
A365	A365 Box Fiveways to Atworth	Surface Treatment
UC	Drewetts Mill, Colerne	Surface Treatment

**2018/19 Schemes (DfT Local Highways Maintenance Funding)** are those schemes which could be implemented with DFT Maintenance block and Incentive funding (£16,139,000).

**2018/19 Schemes (Additional sites with Investment Fund)** are the additional schemes which could be included with the full 'Local Highways Investment Fund 2014 – 2020' (£21,000,000).

Note: Scheme Lists are provisional as budgets for 2018/19 have not been confirmed

<b>Devizes</b>		
<b>Road</b>	<b>2018/19 Schemes (DfT Local Highways Maintenance Funding)</b>	<b>Treatment</b>
C243	Whistley Road, Potterne	Surface Treatment
UC	Sunnyside and Orchard Place, West Lavington	Surfacing
A342	A342 Nursted Road, Devizes (Carriageway Repairs)	Surfacing
UC	Brickley Lane & Jump Farm Road, Devizes (Roundabout Only)	Surfacing
UC	Wharf Street, Devizes	Surfacing
A342	A342 Rowde Village (Carriageway Repairs)	Surfacing
<b>Road</b>	<b>2018/19 Schemes (Additional sites with Investment Fund)</b>	<b>Treatment</b>
C20	Grove Road Market Lavington	Surfacing
Various	Various Footways	Renewal
<b>Road</b>	<b>Reserve or future years sites</b>	<b>Treatment</b>
UC	Russell Mill Lane, Littleton Panell	Surfacing
B3098	B3098 Little Cheverell, Pear Tree junction (Carriageway Repairs)	Carriageway Repairs
A342	A342 Nursted Road Roundabout (Windsor Drive), Devizes	Surfacing
C246	Court Hill, Potterne	Surface Treatment
UC	Netherstreet, Bromham	Surface Treatment
C255	Cock Road, Rowde	Surface Treatment
UC	Kings Road Easterton	Surface Treatment
C246	Worton Road, Cuckolds Green, Potterne	Surface Treatment
C254	The Green, Great Cheverell	Surface Treatment
C249	Conscience Lane, Rowde to Devizes	Surface Treatment
A361	A361 Gains Lane, Devizes	No Action

**2018/19 Schemes (DfT Local Highways Maintenance Funding)** are those schemes which could be implemented with DFT Maintenance block and Incentive funding (£16,139,000).

**2018/19 Schemes (Additional sites with Investment Fund)** are the additional schemes which could be included with the full 'Local Highways Investment Fund 2014 – 2020' (£21,000,000).

Note: Scheme Lists are provisional as budgets for 2018/19 have not been confirmed



<b>Malmesbury</b>		
<b>Road</b>	<b>2018/19 Schemes (DfT Local Highways Maintenance Funding)</b>	<b>Treatment</b>
C1	C1 Hullavington to Norton, Hullavington	Surface Treatment
C94	Littleton Drew to Alderton	Surface Treatment
UC	Parklands/Exton Close, Malmesbury	Surface Treatment
UC	Bremilham Rise, Malmesbury	Surface Treatment
UC	Corn Gastons/Alexander Road, Malmesbury	Surface Treatment
B4040	B4040 Bristol Street, Malmesbury	Surfacing
C68	Tetbury Hill, Malmesbury	Surfacing
A429	A429 Crudwell Village	Surfacing
B4042	B4042 Swindon Road, Malmesbury	Surfacing
<b>Road</b>	<b>2018/19 Schemes (Additional sites with Investment Fund)</b>	<b>Treatment</b>
UC	Newnton Grove, Malmesbury	Surfacing
UC	St Aldhelms Road to Burnham Rd, Malmesbury (Carriageway Repairs)	Carriageway Repairs
UC	Athelstan Road, Malmesbury	Surfacing
UC	Park Road, Malmesbury	Surfacing
UC	Old Alexander Road, Malmesbury	Surfacing
Various	Various Footways	Renewal
<b>Road</b>	<b>Reserve or future years sites</b>	<b>Treatment</b>
B4042	B4042 West of Brinkworth (Carriageway Repairs)	Carriageway Repairs

**2018/19 Schemes (DfT Local Highways Maintenance Funding)** are those schemes which could be implemented with DfT Maintenance block and Incentive funding (£16,139,000).

**2018/19 Schemes (Additional sites with Investment Fund)** are the additional schemes which could be included with the full 'Local Highways Investment Fund 2014 – 2020' (£21,000,000).

Note: Scheme Lists are provisional as budgets for 2018/19 have not been confirmed

<b>Marlborough</b>		
<b>Road</b>	<b>2018/19 Schemes (DfT Local Highways Maintenance Funding)</b>	<b>Treatment</b>
UC	Ewins Hill Byway, Aldbourne (Carriageway Repairs)	Carriageway Repairs
A345	A345 Clench Common Bends	Surface Treatment
A4361	A4361 Broad Hinton to County Boundary	Surface Treatment
B4192	B4192 South of Aldbourne to Preston	Surface Treatment
UC	Manor Park, Froxfield Village	Surface Treatment
A4	A4 London Road, Marlborough	Surfacing
B3052	George Lane, Marlborough	Surfacing
<b>Road</b>	<b>2018/19 Schemes (Additional sites with Investment Fund)</b>	<b>Treatment</b>
C18/UC	The Parade Kennet Place, Marlborough	Surfacing
UC	The Garlings, Aldbourne	Surfacing
Various	Various Footways	Renewal
<b>Road</b>	<b>Reserve or future years sites</b>	<b>Treatment</b>
UC	Vicarage Close, Marlborough	Surfacing
A4	A4 Silbury Hill to Fyfield	Surfacing
A4	A4 Fyfield to Clatford	Surfacing
A346	A346 Marlborough to Swindon Boundary (Carriageway Repairs)	Surfacing
A4361	A4361 North of Avebury to County Boundary (Sections)	Carriageway Repairs
UC	St Margarets Mead Estate, Marlborough	Surface Treatment
UC	Elcot Lane, Marlborough	Surface Treatment
A345	A345 Clench Common to Marlborough	Surface Treatment

**2018/19 Schemes (DfT Local Highways Maintenance Funding)** are those schemes which could be implemented with DFT Maintenance block and Incentive funding (£16,139,000).

**2018/19 Schemes (Additional sites with Investment Fund)** are the additional schemes which could be included with the full 'Local Highways Investment Fund 2014 – 2020' (£21,000,000).

Note: Scheme Lists are provisional as budgets for 2018/19 have not been confirmed

<b>Melksham</b>		
<b>Road</b>	<b>2018/19 Schemes (DfT Local Highways Maintenance Funding)</b>	<b>Treatment</b>
C212	Melksham Lane, Broughton Gifford	Surface Treatment
A365	A365 Box Fiveways to Atworth (Part)	Surfacing
A361	A361 Seend Village (Carriageway Repairs)	Carriageway Repairs
UC	St Marys, Steeple Ashton	Surfacing
<b>Road</b>	<b>2018/19 Schemes (Additional sites with Investment Fund)</b>	<b>Treatment</b>
A3102	TBC - Melksham, A3102 Sandridge Rd to Bypass (Carriageway Repairs)	Carriageway Repairs
Various	Various Footways	Renewal
<b>Road</b>	<b>Reserve or future years sites</b>	<b>Treatment</b>
UC	Willow Crescent, Broughton Gifford	Surfacing
UC	Coburg Square, Melksham	Surfacing
UC	Church Street, Steeple Ashton	Surfacing
A350	A350 Stoney Gutter, southbound (Carriageway Repairs)	Carriageway Repairs
C381	King Street, Semington Road, Melksham	Surfacing
UC	Marti Close, Melksham	Surfacing
UC	Old Road, Beanacre	Surfacing
C395	Pathfinder Way, Bowerhill (Spa Rd to Ind. Est.)	Surfacing
A3102	Sandridge Common 40mph extents Blackmore House, etc	Surfacing
A350	A350 Melksham Dual Asda to Avon Road Rbt (Carriageway Repairs)	Carriageway Repairs
A350	A350 Semington Bypass (Carriageway Repairs)	Carriageway Repairs
C165	Lower Woodrow Rd & Forest Lane (Melksham to Lacock)	Surface Treatment

**2018/19 Schemes (DfT Local Highways Maintenance Funding)** are those schemes which could be implemented with DfT Maintenance block and Incentive funding (£16,139,000).

**2018/19 Schemes (Additional sites with Investment Fund)** are the additional schemes which could be included with the full 'Local Highways Investment Fund 2014 – 2020' (£21,000,000).

Note: Scheme Lists are provisional as budgets for 2018/19 have not been confirmed

<b>Pewsey</b>		
<b>Road</b>	<b>2018/19 Schemes (DfT Local Highways Maintenance Funding)</b>	<b>Treatment</b>
UC	Heath Lane, Buttermere	Surface Treatment
UC	Smay Down Lane, Oxenwood	Surface Treatment
A345	A345 Oare Village	Surface Treatment
A345	A345 Woodbridge Rbt to Pewsey	Surface Treatment
UC	Milkhouse Water, Pewsey	Surface Treatment
UC	Raffin Lane, Pewsey	Surfacing
C38	Broad Street, Woodborough	Surfacing
C30	Church Street, Great Bedwyn	Surfacing
<b>Road</b>	<b>2018/19 Schemes (Additional sites with Investment Fund)</b>	<b>Treatment</b>
UC	Astley Close, Pewsey	Surfacing
UC	Kelston Road, Little Bedwyn	Surfacing
Various	Various Footways	Renewal
<b>Road</b>	<b>Reserve or future years sites</b>	<b>Treatment</b>
A338	A338 Burbage Bends	Surfacing
A345	A345 Oare to Clench Common	Surface Treatment
C269	Sunnyhill Lane, Pewsey	Surface Treatment
A338	A338 Burbage to County Boundary	Surface Treatment

**2018/19 Schemes (DfT Local Highways Maintenance Funding)** are those schemes which could be implemented with DFT Maintenance block and Incentive funding (£16,139,000).

**2018/19 Schemes (Additional sites with Investment Fund)** are the additional schemes which could be included with the full 'Local Highways Investment Fund 2014 – 2020' (£21,000,000).

Note: Scheme Lists are provisional as budgets for 2018/19 have not been confirmed

## Royal Wotton Bassett & Cricklade

Road	2018/19 Schemes (DfT Local Highways Maintenance Funding)	Treatment
B4042	B4042 Junction with B4696 to Coped Hall R/A (Part)	Surface Treatment
C124	C124/C116 Eysey to Marston Maisey	Surface Treatment
C114	C114 - A419 to Kempsford	Surface Treatment
UC	The Beeches, Lydiard Millicent	Surfacing
C415	Station Road, Royal Wootton Bassett	Surfacing
Road	2018/19 Schemes (Additional sites with Investment Fund)	Treatment
C122	New Road, Royal Wootton Bassett	Surfacing
Various	Various Footways	Renewal

**2018/19 Schemes (DfT Local Highways Maintenance Funding)** are those schemes which could be implemented with DfT Maintenance block and Incentive funding (£16,139,000).

**2018/19 Schemes (Additional sites with Investment Fund)** are the additional schemes which could be included with the full 'Local Highways Investment Fund 2014 – 2020' (£21,000,000).

Note: Scheme Lists are provisional as budgets for 2018/19 have not been confirmed

<b>Road</b>	<b>RWB &amp; Cricklade Reserve or future years sites</b>	<b>Treatment</b>
B4553	B4553 Common Platt to County Boundary	Surfacing
UC	Vasterne Close, Purton (Carriageway Repairs)	Carriageway Repairs
UC	Hunts Mill Lane, Royal Wootton Bassett (Carriageway Repairs)	Carriageway Repairs
C47	Tadpole Lane/Hayes Knoll Lane	Surfacing
UC	Witts Lane/Hoggs Lane/Vastern Hill Byway, Purton	Surfacing
UC/C129	C129 Hollow Way, Bradenstoke	Surface Treatment
UC	Stoke Common Lane, Purton Stoke	Surface Treatment
B4040	B4040 Chelworth to Cricklade	Surface Treatment
B4553	B4553 South of Cricklade	Surface Treatment
B4553	B4553 Cross Lanes to Common Platt	Surface Treatment
B4553	B4553 Packhorse Lane, Purton (Carriageway Repairs)	Carriageway Repairs
C129	Clack Hill Bradenstoke	Surface Treatment
C291	Pond Lane, Purton Stoke	Surface Treatment
UC	Bradens/Bradene Close, Royal Wootton Bassett	Surface Treatment
UC	Dunnington Road, Royal Wootton Bassett	Surface Treatment
UC	Eastwood Avenue, Royal Wootton Bassett	Surface Treatment
UC	Englefield, Royal Wootton Bassett	Surface Treatment
UC	Homefield, Royal Wootton Bassett	Surface Treatment
UC	Horsell Close, Royal Wootton Bassett	Surface Treatment
UC	Sorrell Close, Royal Wootton Bassett	Surface Treatment
UC	Templars Firs, Royal Wootton Bassett	Surface Treatment
UC	Buryfields, Lydiard Millicent	Surface Treatment
UC	Chestnut Springs, Lydiard Millicent	Surface Treatment
C126	Collins Lane Purton	Surface Treatment
C16	Stone Lane, Lydiard	Surface Treatment
C120	C120 Trow Lane, Tockenham	Surface Treatment
C76	C76 Chessley Hill, Tockenham Wick	Surface Treatment
UC	Bentham Lane, Purton Stoke	Surface Treatment
UC	Bowds Lane	Surface Treatment

Note: Scheme Lists are provisional as budgets for 2018/19 have not been confirmed

<b>Salisbury</b>		
<b>Road</b>	<b>2018/19 Schemes (DfT Local Highways Maintenance Funding)</b>	<b>Treatment</b>
UC	Westwood Rd, Salisbury	Surface Treatment
UC	Endless Street, Salisbury	Surfacing
A30	A30 Parkwood Roundabout	Surfacing
<b>Road</b>	<b>2018/19 Schemes (Additional sites with Investment Fund)</b>	<b>Treatment</b>
UC	Blue Boar Row, Salisbury (Part)	Surfacing
UC	St Francis Road, Salisbury	Surfacing
UC	Harcourt Terrace, off Mill Road, Salisbury	Surfacing
UC	Longland, off Wilton Road, Salisbury	Surfacing
UC	Hedley Davis Court, Salisbury	Surfacing
Various	Various Footways	Renewal
<b>Road</b>	<b>Reserve or future years sites</b>	<b>Treatment</b>
A338	A338 Downton Rd, Britford	Surfacing
UC	Pinewood Way & Cedar Close, Salisbury	Surfacing
UC	Telford Road, Churchfields, Salisbury	Surfacing
UC	Hadrians Close, Salisbury	Surfacing
UC	Ashfield Road, Salisbury	Surfacing
UC	St Edmonds Church Street, Salisbury (Carriageway Repairs)	Carriageway Repairs
UC	Highbury Avenue, Salisbury (Carriageway Repairs)	Carriageway Repairs
UC	Middleton Road, Salisbury	Surfacing
UC	Norfolk Road, Salisbury	Surfacing
C56	Philips Lane/Gradidge Lane, Salisbury	Surface Treatment
UC	Romer Road, Harnham	TBC

**2018/19 Schemes (DfT Local Highways Maintenance Funding)** are those schemes which could be implemented with DFT Maintenance block and Incentive funding (£16,139,000).

**2018/19 Schemes (Additional sites with Investment Fund)** are the additional schemes which could be included with the full 'Local Highways Investment Fund 2014 – 2020' (£21,000,000).

Note: Scheme Lists are provisional as budgets for 2018/19 have not been confirmed

<b>South West Wiltshire</b>		
<b>Road</b>	<b>2018/19 Schemes (DfT Local Highways Maintenance Funding)</b>	<b>Treatment</b>
UC	Lower Chicksgrove to Lagpond Lane. (C24 to C317)	Surface Treatment
UC	Elcombe Lane, Alvediston	Surface Treatment
C380	C380 High Street to Gasper Street, Stourton	Surface Treatment
C297	Willoughby Hedge to West Knoyle (The Street)	Surface Treatment
C278	Wolverton to B3092	Surface Treatment
UC	Sling Orchard, Fovant	Surfacing
A350	A350 East Knoyle, The Turnpike	Surfacing
B3092	Castle Street, Mere - Carriageway Repairs	Surfacing
C62	Bennett Arms to Railbridge (Carriageway Repairs)	Carriageway Repairs
C25	C25 Hindon Lane (Carriageway Repairs)	Carriageway Repairs
B3081	B3081 Zig Zag Hill (Carriageway Repairs)	Carriageway Repairs
<b>Road</b>	<b>2018/19 Schemes (Additional sites with Investment Fund)</b>	<b>Treatment</b>
UC	Bells Lane, Zeals	Surfacing
A30	A30 Shaftesbury Road, Wilton	Surfacing
Various	Various Footways	Renewal

**2018/19 Schemes (DfT Local Highways Maintenance Funding)** are those schemes which could be implemented with DFT Maintenance block and Incentive funding (£16,139,000).

**2018/19 Schemes (Additional sites with Investment Fund)** are the additional schemes which could be included with the full 'Local Highways Investment Fund 2014 – 2020' (£21,000,000).

Note: Scheme Lists are provisional as budgets for 2018/19 have not been confirmed



<b>Road</b>	<b>South West Wiltshire reserve or future years sites</b>	<b>Treatment</b>
UC	Seniors Farm Lane Semley	Surfacing
UC	Weaveland Road, Tisbury	Surfacing
B3092	Castle Street, Mere	Surfacing
A350	A350 Hart Hill	Surfacing
C326	Back Lane Bowerchalke (Carriageway Repairs)	Carriageway Repairs
C279	Dukes Lane Kilmington	Surfacing
UC	Grovely Road Barford St Martin	Surface Treatment
B3089	B3089 Willoughby Hedge to A350 Stagger Cross	Surface Treatment
C277	C277 Teffont Magna to Dinton	Surface Treatment
C308	Crate Lane Street Lane loop	Surface Treatment
B3089	B3089 Stagger Cross to Barford St Martin	Surface Treatment

Note: Scheme Lists are provisional as budgets for 2018/19 have not been confirmed

<b>Southern Wiltshire</b>		
<b>Road</b>	<b>2018/19 Schemes (DfT Local Highways Maintenance Funding)</b>	<b>Treatment</b>
C12	C12 Odstock Village	Surface Treatment
UC	South Lane, Nomansland	Surface Treatment
C336	C336 Witherington Road, Alderbury	Surface Treatment
UC	Pineview Close, Redlynch	Surfacing
UC	Slab Lane, Redlynch - 2 sections	Surfacing
TBC	TBC	Surfacing
<b>Road</b>	<b>2018/19 Schemes (Additional sites with Investment Fund)</b>	<b>Treatment</b>
C56	The Portway between Beehive and Castlegate Rbts	Surfacing
Various	Various Footways	Renewal
<b>Road</b>	<b>Reserve or future years sites</b>	<b>Treatment</b>
UC	Parkwater Road, Whiteparish	Surfacing
UC	Church Lane, Farley	Surfacing
A27	A27 Whiteparish 30mph extents	Surfacing
A27	A27 Whiteparish 40mph to Parkwater Rd Cowesfield Green	Surface Treatment
B3080	B3080 Downton to Woodfalls	Surface Treatment
C321	C321 Pitton Road, Whiteway, Whitehill to Farley	Surface Treatment
UC	Goggs Lane, Redlynch	Surface Treatment

**2018/19 Schemes (DfT Local Highways Maintenance Funding)** are those schemes which could be implemented with DfT Maintenance block and Incentive funding (£16,139,000).

**2018/19 Schemes (Additional sites with Investment Fund)** are the additional schemes which could be included with the full 'Local Highways Investment Fund 2014 – 2020' (£21,000,000).

Note: Scheme Lists are provisional as budgets for 2018/19 have not been confirmed

<b>Tidworth</b>		
<b>Road</b>	<b>2018/19 Schemes (DfT Local Highways Maintenance Funding)</b>	<b>Treatment</b>
A345	A345 Enford to Netheravon	Surface Treatment
<b>Road</b>	<b>2018/19 Schemes (Additional sites with Investment Fund)</b>	<b>Treatment</b>
UC	Wylve Road, Tidworth	Surfacing
Various	Various Footways	Renewal
<b>Road</b>	<b>Reserve or future years sites</b>	<b>Treatment</b>
C256	Shoddesden Lane, Ludgershall	Surfacing
UC	Hei Lin Way, Ludgershall	Surfacing
UC	Mill Drove, Collingbourne Kingston (Carriageway Repairs)	Carriageway Repairs
C256	Hookwood Lane, Upper Chute	Surfacing
A342	A342 Andover Rd Ludgershall	Surfacing
A342	A342 Upavon 30mph to Compton	Surface Treatment
C256	Biddesden Lane to Lower Chute	Surface Treatment

**2018/19 Schemes (DfT Local Highways Maintenance Funding)** are those schemes which could be implemented with DFT Maintenance block and Incentive funding (£16,139,000).

**2018/19 Schemes (Additional sites with Investment Fund)** are the additional schemes which could be included with the full 'Local Highways Investment Fund 2014 – 2020' (£21,000,000).

Note: Scheme Lists are provisional as budgets for 2018/19 have not been confirmed

<b>Trowbridge</b>		
<b>Road</b>	<b>2018/19 Schemes (DfT Local Highways Maintenance Funding)</b>	<b>Treatment</b>
UC	Newleaze, Hilperton	Surface Treatment
UC	Whaddon Lane, Hilperton	Surface Treatment
C49	West Ashton Road, Trowbridge Sections A & B	Surfacing
C372	Timbrell Street, Trowbridge (Carriageway Repairs)	Carriageway Repairs
B3106	Islington, Trowbridge (Carriageway Repairs)	Carriageway Repairs
<b>Road</b>	<b>2018/19 Schemes (Additional sites with Investment Fund)</b>	<b>Treatment</b>
A363	Phillips Way Roundabout, North Bradley	Surfacing
Various	Various Footways	Renewal
<b>Road</b>	<b>Reserve or future years sites</b>	<b>Treatment</b>
UC	Court Street, Trowbridge	Surfacing
UC	Maple Grove, Trowbridge	Surfacing
C361	Mortimer Street, Trowbridge	Surfacing
UC	Eastbourne Gardens, Trowbridge	Surfacing
UC	Carisbrooke Crescent, Trowbridge	TBC
UC	Church Lane, North Bradley	Surfacing
B3097	Hawkeridge Road, Yarnbrook	Surfacing

**2018/19 Schemes (DfT Local Highways Maintenance Funding)** are those schemes which could be implemented with DfT Maintenance block and Incentive funding (£16,139,000).

**2018/19 Schemes (Additional sites with Investment Fund)** are the additional schemes which could be included with the full 'Local Highways Investment Fund 2014 – 2020' (£21,000,000).

Note: Scheme Lists are provisional as budgets for 2018/19 have not been confirmed

<b>Warminster</b>		
<b>Road</b>	<b>2018/19 Schemes (DfT Local Highways Maintenance Funding)</b>	<b>Treatment</b>
A350	A350, South of Longbridge Deverill to Lower Pertwood	Surface Treatment
C10	C10 Boyton Bends	Surface Treatment
A350	A350 Crockerton (Part)	Surfacing
<b>Road</b>	<b>2018/19 Schemes (Additional sites with Investment Fund)</b>	<b>Treatment</b>
C364	Station Road, Warminster	Surfacing
UC	Fairfield Road, Warminster	Surfacing
Various	Various Footways	Renewal
<b>Road</b>	<b>Reserve or future years sites</b>	<b>Treatment</b>
UC	Sambourne Road, Warminster	Surfacing
UC	Geys Hill - Stalls Lane, Dertfords (Corsley)	Surface Treatment
UC	Huntenhull Green, Corsley	Surface Treatment
UC	Short Street, Chalcot	Surface Treatment
UC	Cley Hill Farm, Corsley	Surface Treatment
C10	Bishopstrow Road, Warminster	Surface Treatment
UC	UC Upton Scudamore to A350	Surface Treatment
C360	Deverill Road, Warminster	TBC
C10	Copheap Lane, Warminster	TBC
B390	B390, Chitterne	TBC
C22	Townsend, Chitterne	TBC
A3098	Thoulstone (A36 On/Off Slips)	TBC
UC	u/c Mill Farm Road, Heytesbury (10)	TBC

**2018/19 Schemes (DfT Local Highways Maintenance Funding)** are those schemes which could be implemented with DfT Maintenance block and Incentive funding (£16,139,000).

**2018/19 Schemes (Additional sites with Investment Fund)** are the additional schemes which could be included with the full 'Local Highways Investment Fund 2014 – 2020' (£21,000,000).

Note: Scheme Lists are provisional as budgets for 2018/19 have not been confirmed

<b>Westbury</b>		
<b>Road</b>	<b>2018/19 Schemes (DfT Local Highways Maintenance Funding)</b>	<b>Treatment</b>
UC	Old Dilton Road, Westbury	Surface Treatment
UC	Coombe Lane, Bratton	Surface Treatment
UC	Coulston Hollow, Coulston	Surface Treatment
UC	Long Hollow, Edington	Surface Treatment
UC	Shepherds Mead, Dilton Marsh (Carriageway Repairs)	Carriageway Repairs
UC	Newtown, Westbury	Surfacing
<b>Road</b>	<b>2018/19 Schemes (Additional sites with Investment Fund)</b>	<b>Treatment</b>
UC	Frogmore Road, Westbury	Surfacing
Various	Various Footways	Renewal
<b>Road</b>	<b>Reserve or future years sites</b>	<b>Treatment</b>
UC	Hawkeridge Road, Westbury	Surfacing
UC	Dilton Lane, Upton Scudamore	Surfacing
UC	Quartermaster Road, Westbury	Surfacing
A350	A350 Westbury - Warminster Rd, etc (Carriageway Repairs)	Carriageway Repairs

**2018/19 Schemes (DfT Local Highways Maintenance Funding)** are those schemes which could be implemented with DfT Maintenance block and Incentive funding (£16,139,000).

**2018/19 Schemes (Additional sites with Investment Fund)** are the additional schemes which could be included with the full 'Local Highways Investment Fund 2014 – 2020' (£21,000,000).

Note: Scheme Lists are provisional as budgets for 2018/19 have not been confirmed