

**Royal Wootton Bassett (SBR PC 23)**

**Table 22 Proposed changes to the pre-submission Royal Wootton Bassett Settlement Boundary<sup>27</sup>**

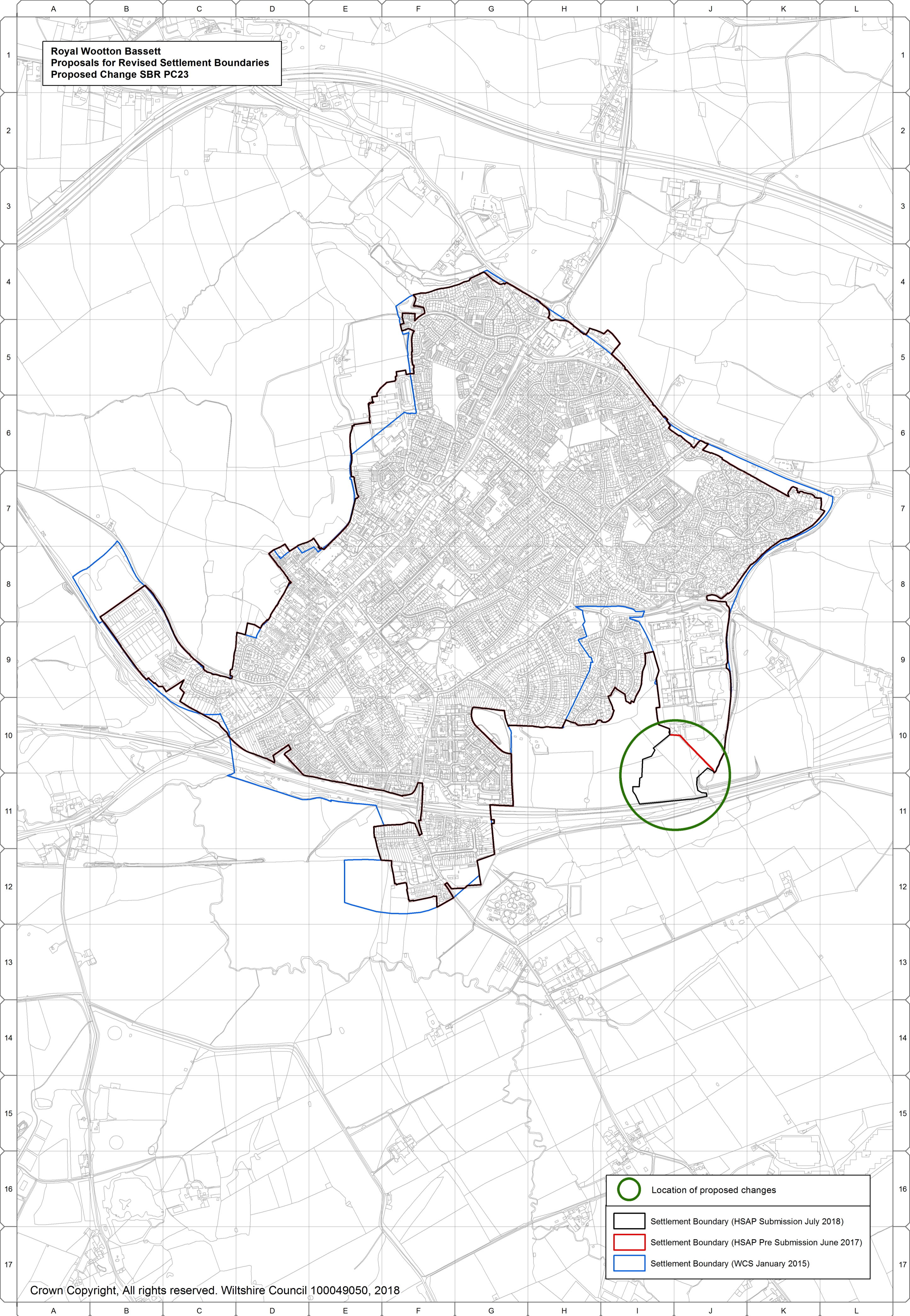
Map Grid Reference	Proposed change
I10-I11 and J10-J11	Amend pre-submission settlement boundary to include new dwellings at Lower Woodshaw, Brynards' Hill. This is built residential development that is physically related to the settlement.


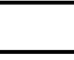


---

<sup>27</sup> This is a copy of Table A.1.1 on page 18 of the Royal Wootton Bassett and Cricklade Community Area Topic Paper.



**Royal Wootton Bassett  
Proposals for Revised Settlement Boundaries  
Proposed Change SBR PC23**



-  Location of proposed changes
-  Settlement Boundary (HSAP Submission July 2018)
-  Settlement Boundary (HSAP Pre Submission June 2017)
-  Settlement Boundary (WCS January 2015)