

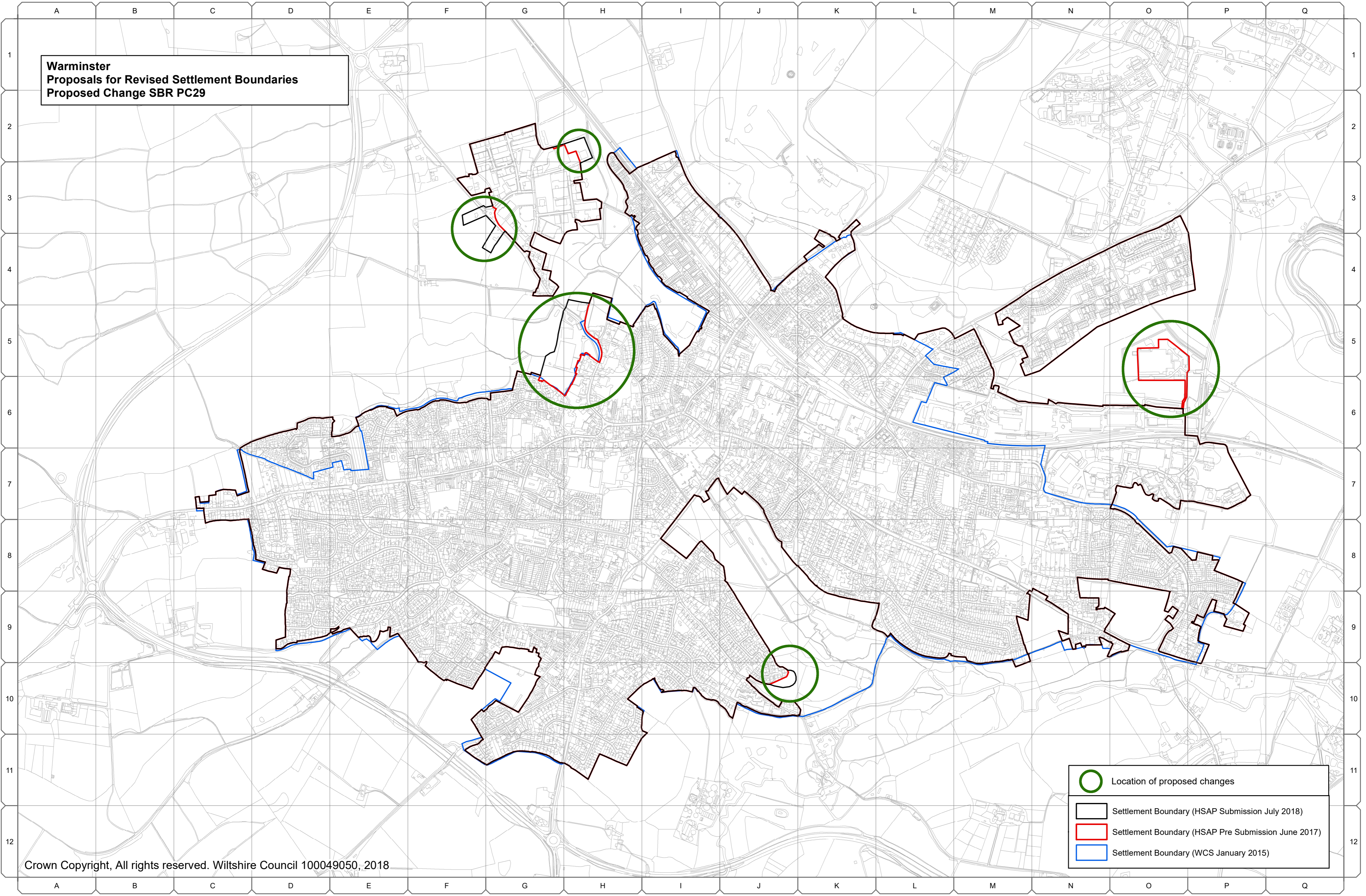
## Warminster (SBR PC 29)





**Table 26 Proposed changes to the pre-submission Warminster Settlement Boundary<sup>31</sup>**

Map Grid Reference	Proposed change
<b><u>P5</u></b> , O5 and O6	Amend pre-submission settlement boundary to exclude MOD building and the narrow access lane. This is isolated development that is physically detached from the settlement.
H4, G5, H5, G6 <b><u>and H6</u></b>	Amend pre-submission settlement boundary to include the Minster Church car park and the grounds of Warminster School. This is built development and its curtilage that is physically related to the settlement.
F3, G3, F4, G4	Amend pre-submission settlement boundary to include the properties known as the White House and 109 Bath Road. This is built residential development that is physically related to the settlement.
J10	Amend pre-submission settlement boundary to include properties at Damask Way. This is built residential development that is physically related to the settlement
H2	Amend pre-submission settlement boundary to include land within the Crusader Business Park. This is built employment development that is physically related to the settlement

<sup>31</sup> This is a copy of Table A.1.1 on page 34 of the Warminster Community Area Topic Paper.

**Warminster**  
**Proposals for Revised Settlement Boundaries**  
**Proposed Change SBR PC29**



-  Location of proposed changes
-  Settlement Boundary (HSAP Submission July 2018)
-  Settlement Boundary (HSAP Pre Submission June 2017)
-  Settlement Boundary (WCS January 2015)