

## **Salisbury (SBR PC 37)**

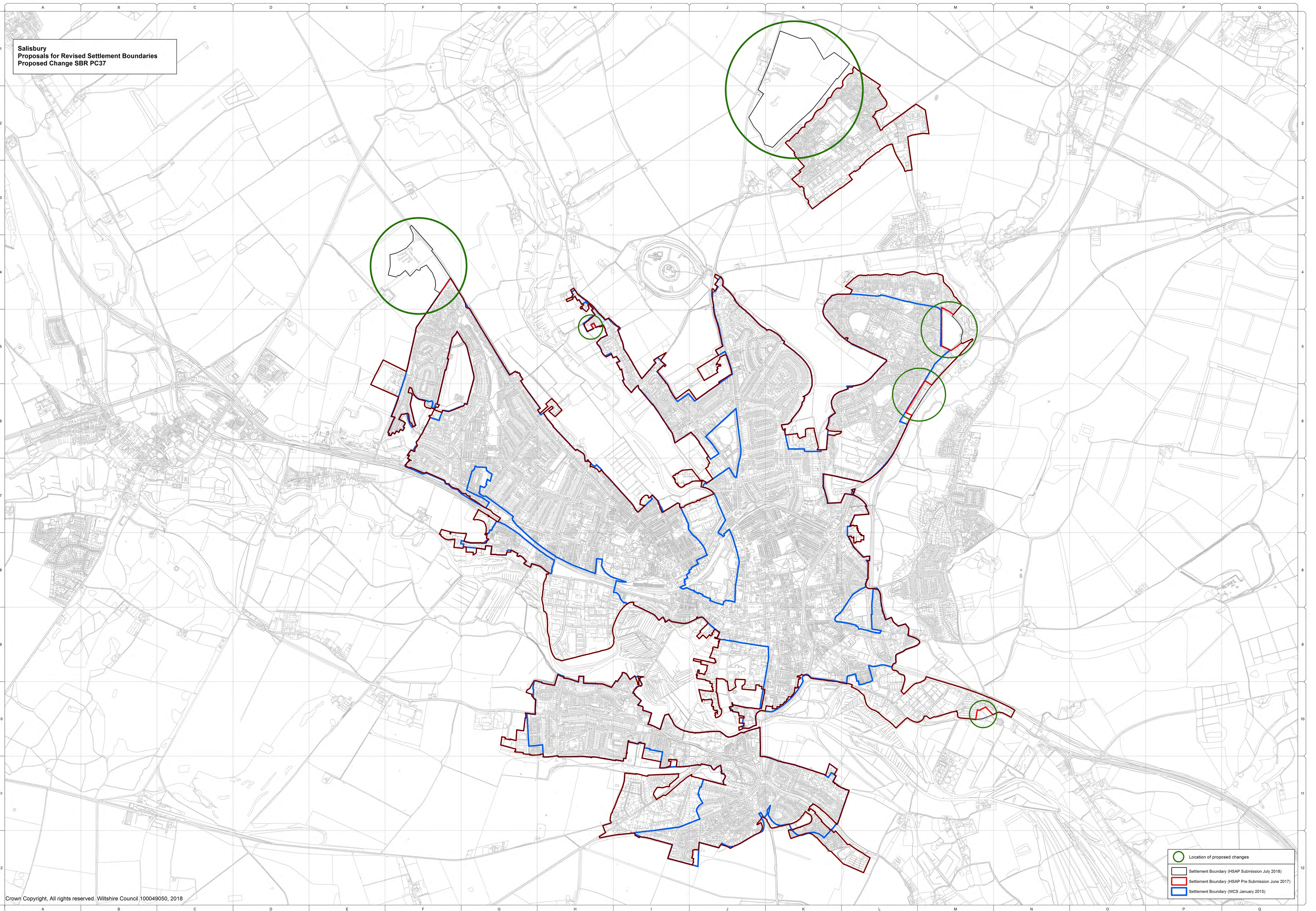
**Table 34 Proposed changes to the pre-submission Salisbury Settlement Boundary<sup>40</sup>**

<b>Map Grid Reference</b>	<b>Proposed change</b>
L6 and M6	Amend pre-submission settlement boundary to include the London Park and Ride Car Park. This is part of the built form and its border with the railway line would ensure the boundary follows but not includes a clearly defined physical feature.
M5	Amend pre-submission settlement boundary to include land at Salisbury Retail Park ('the Asda site'). This is commenced development that is physically related to the settlement.
H5	Amend pre-submission settlement boundary to include land at Mill Lane, Stratford Sub-Castle. This is recreational or amenity space at the edge of a settlement that relates more closely to the built environment, is surrounded on three sides by existing residential development and its inclusion would align with the settlement boundary on either side of this land.
M10	Amend pre-submission settlement boundary to include the garden curtilage of Elmfield House, Petersfinger. This is the curtilage of a property that relates more closely to the built environment (e.g. a garden), is enclosed by the Park and Ride and A36, and has limited capacity to extend the built form of the settlement in terms of scale and location.
F3 and F4	Amend pre-submission settlement boundary to include new development at Fugglestone Red. This is built development that is physically related to the settlement.
J1, J2, K1, K2 and L1	Amend pre-submission settlement boundary to include new development on land at Longhedge. This is built development that is physically related to the settlement.

<sup>40</sup> This is a copy of Table A.1.1 on page 30 of the Salisbury Community Area Topic Paper.



Salisbury  
Proposals for Revised Settlement Boundaries  
Proposed Change SBR PC37



- Location of proposed changes
- Settlement Boundary (HSAP Submission July 2018)
- Settlement Boundary (HSAP Pre Submission June 2017)
- Settlement Boundary (WCS January 2015)