

South Wiltshire Housing Market Area

Amesbury Community Area

A.81 The following settlement boundaries in the Amesbury Community Area have been reviewed by the Wiltshire Housing Site Allocations Plan:

- Amesbury
- Bulford
- Durrington
- Great Wishford
- Shrewton
- The Winterbournes, and
- Tilshead

A.82 The settlement boundary for Porton has not been reviewed because of a neighbourhood plan (Idmiston NP).

**Amesbury
Proposals for Revised Settlement Boundaries**



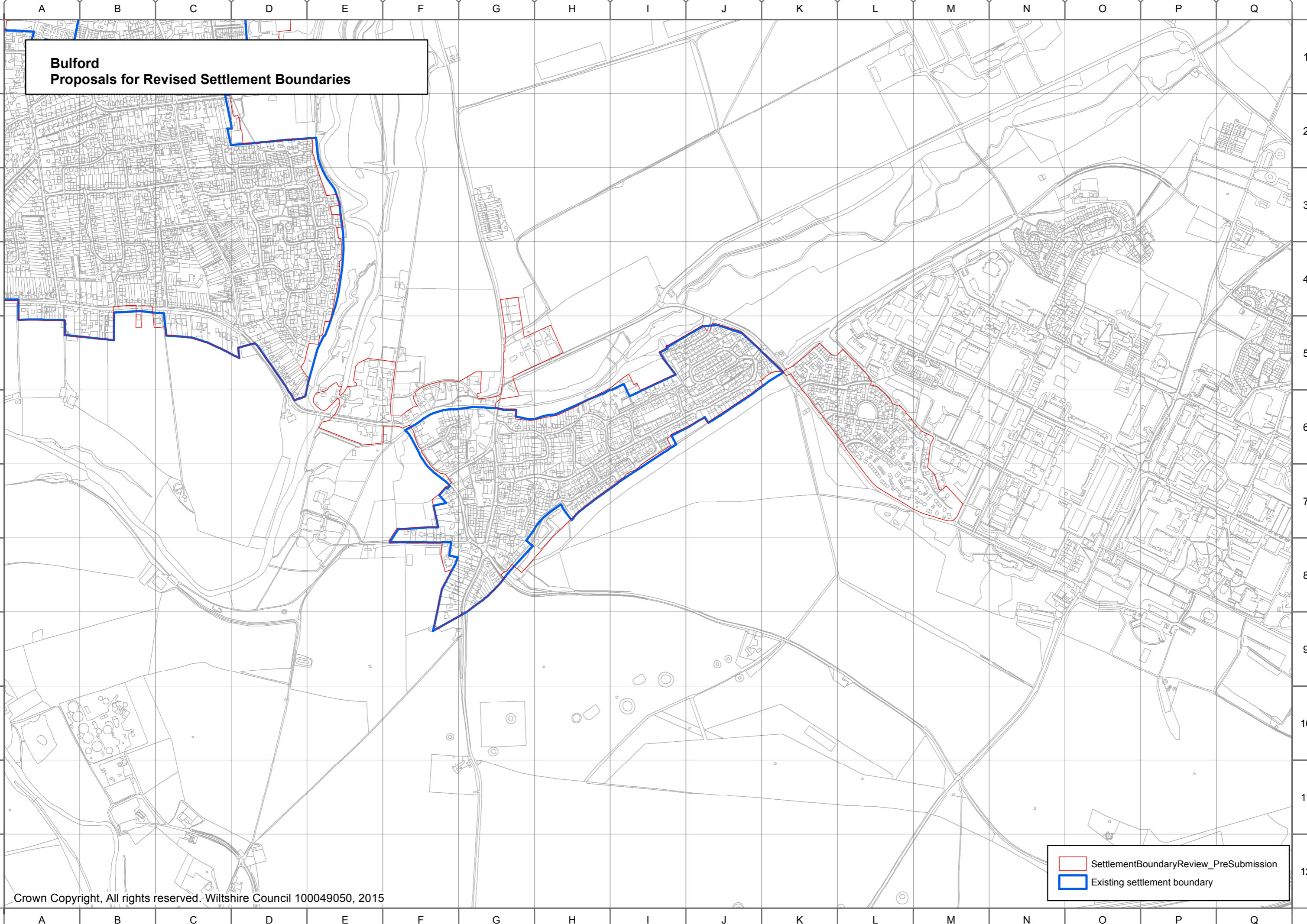
SettlementBoundaryReview_PreSubmission
Existing settlement boundary

A B C D E F G H I J K L M N O P Q

1
2
3
4
5
6
7
8
9
10
11
12

1
2
3
4
5
6
7
8
9
10
11
12

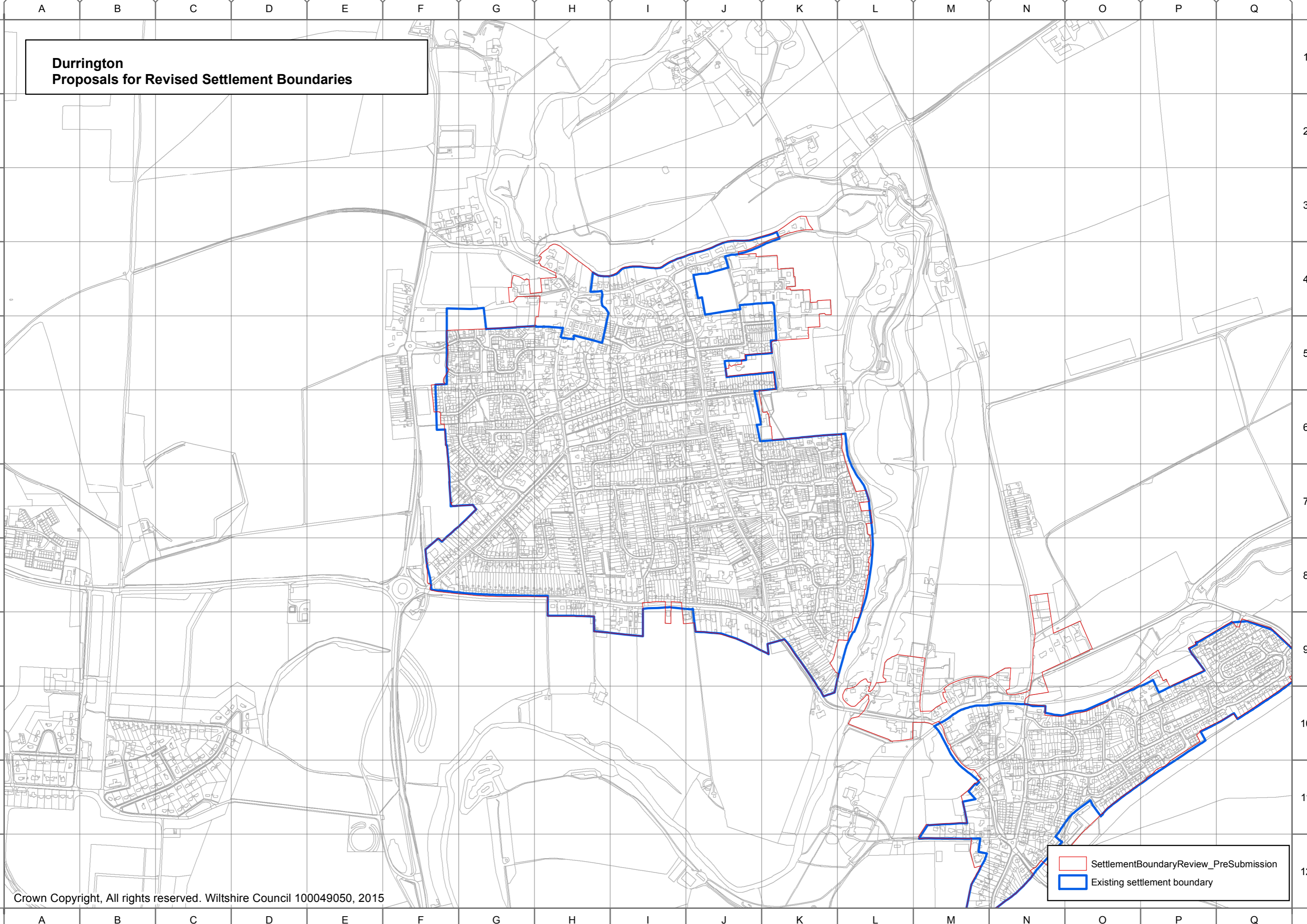
**Bulford
Proposals for Revised Settlement Boundaries**



SettlementBoundaryReview_PreSubmission
Existing settlement boundary

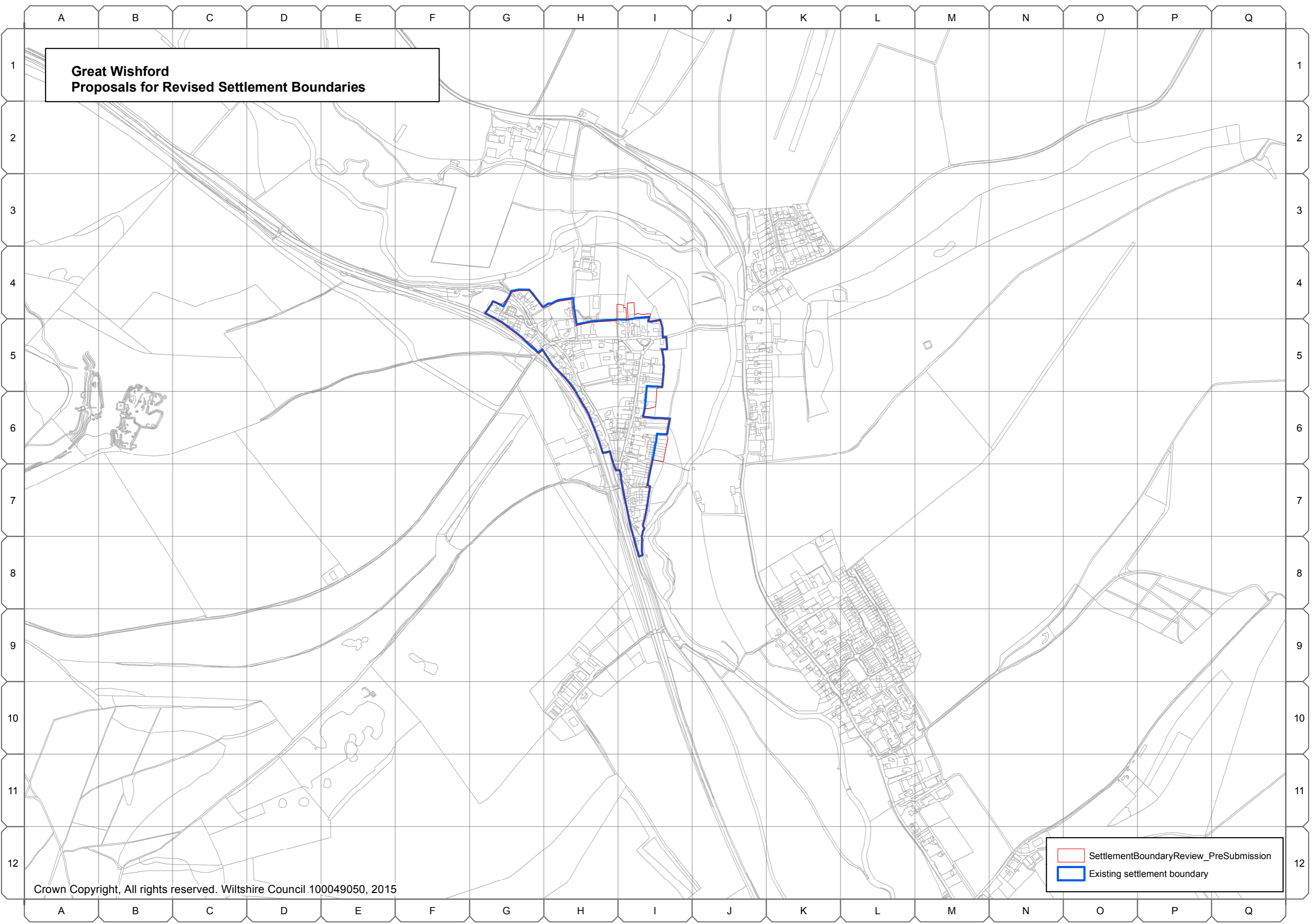
A B C D E F G H I J K L M N O P Q

**Durrington
Proposals for Revised Settlement Boundaries**



SettlementBoundaryReview_PreSubmission
Existing settlement boundary

**Great Wishford
Proposals for Revised Settlement Boundaries**

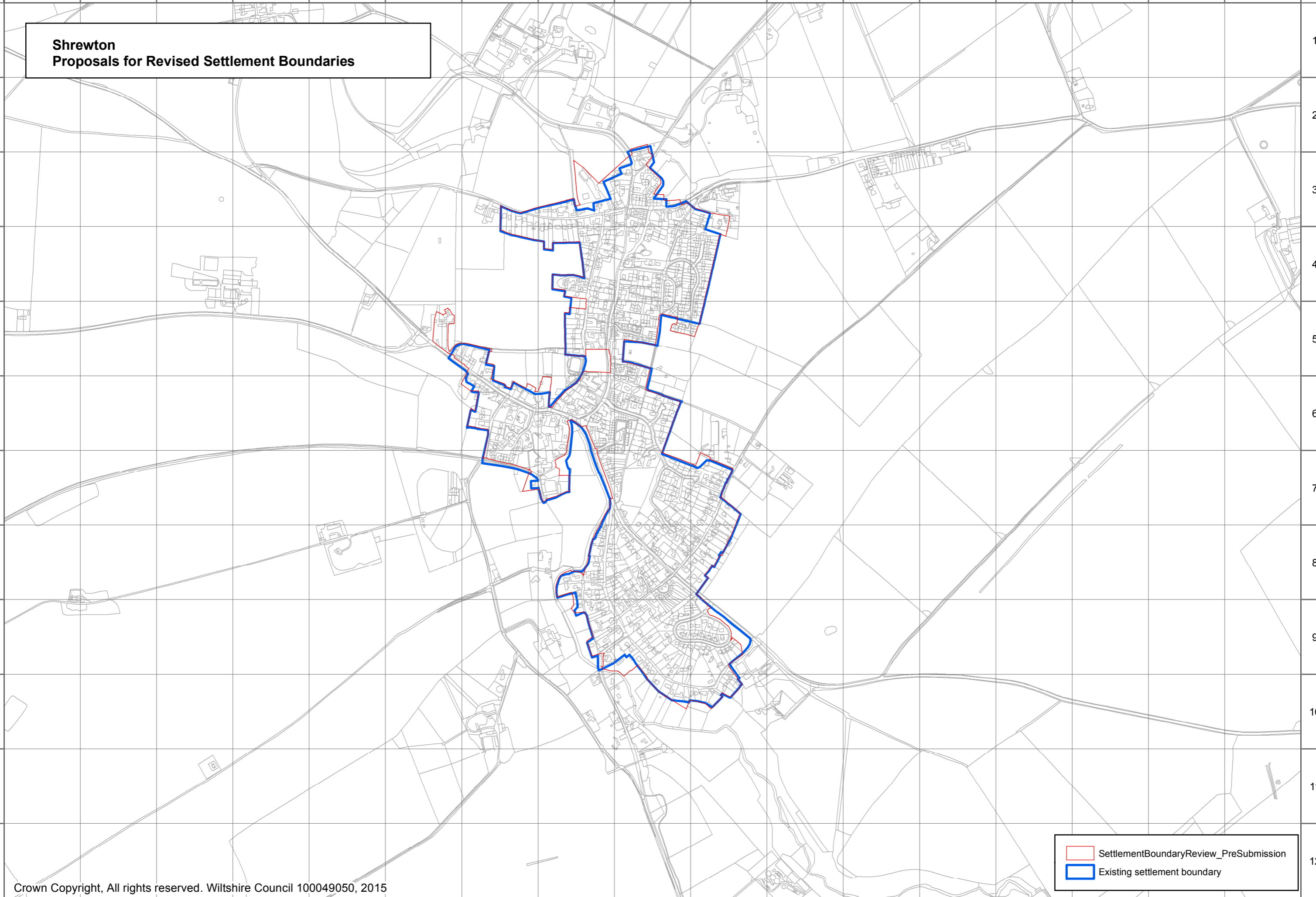


SettlementBoundaryReview_PreSubmission
Existing settlement boundary

A B C D E F G H I J K L M N O P Q

1
2
3
4
5
6
7
8
9
10
11
12

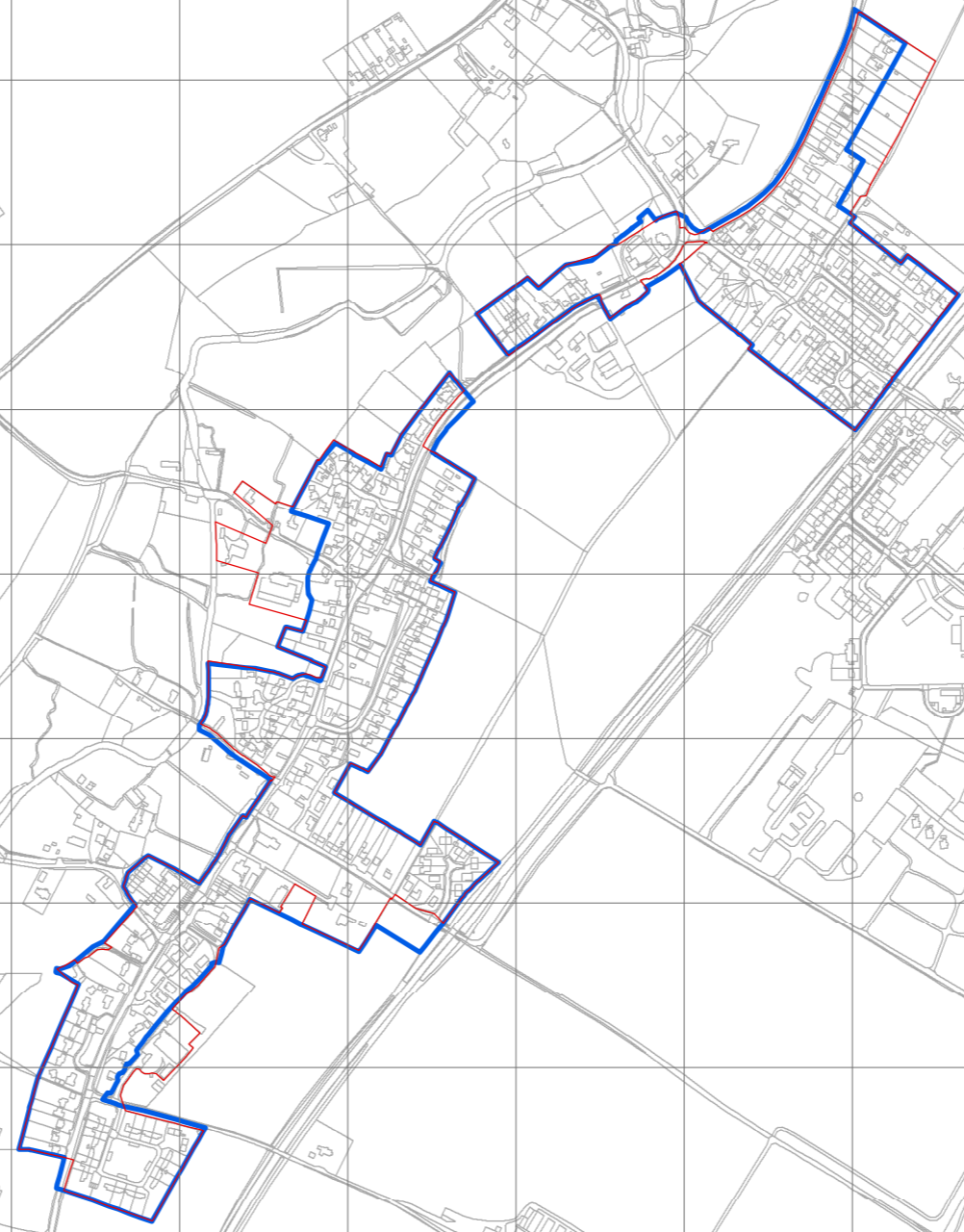
**Shrewton
Proposals for Revised Settlement Boundaries**



SettlementBoundaryReview_PreSubmission
Existing settlement boundary

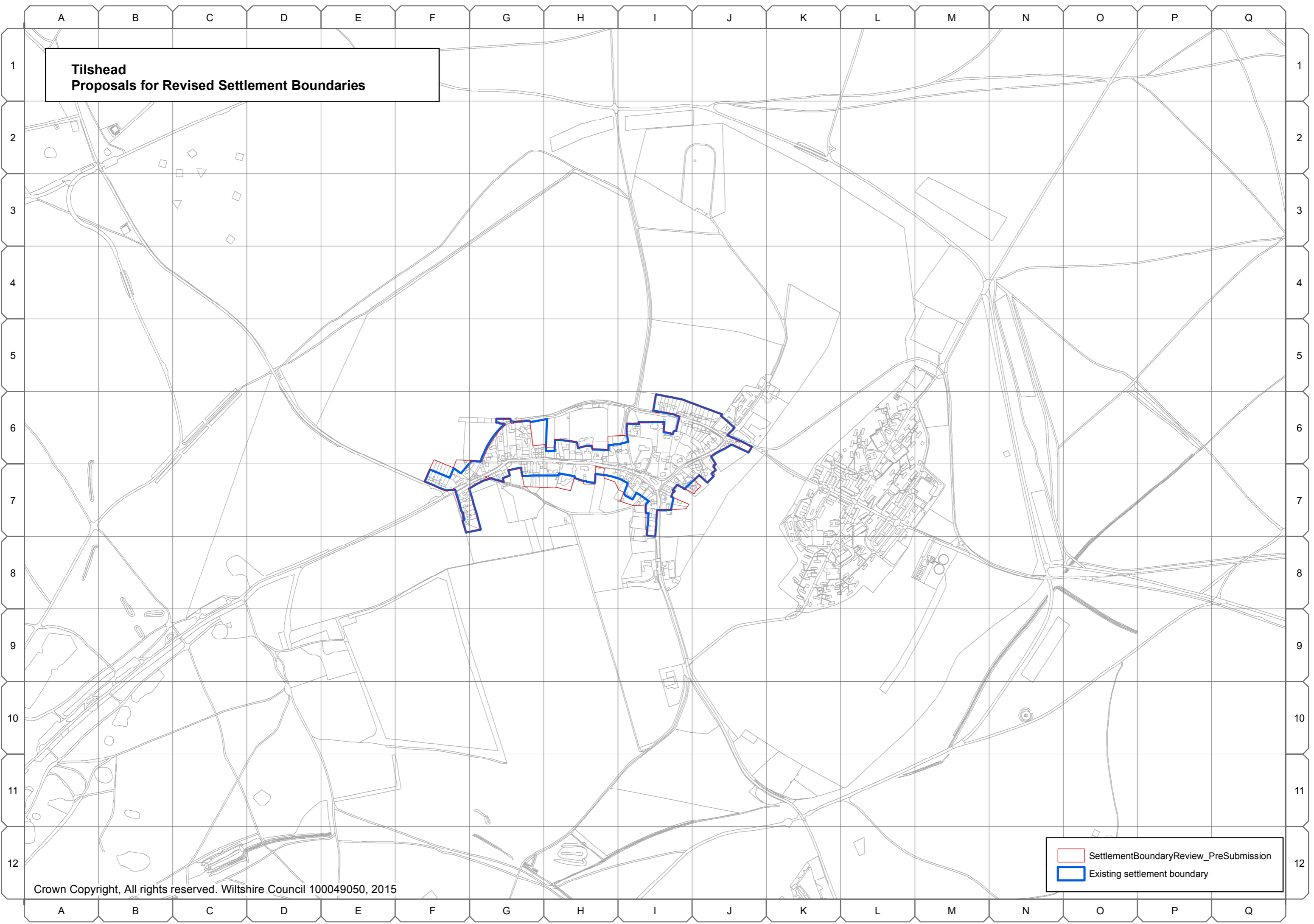
A B C D E F G H I J K L M N O P Q

**The Winterbournes
Proposals for Revised Settlement Boundaries**



SettlementBoundaryReview_PreSubmission
Existing settlement boundary

**Tilshead
Proposals for Revised Settlement Boundaries**



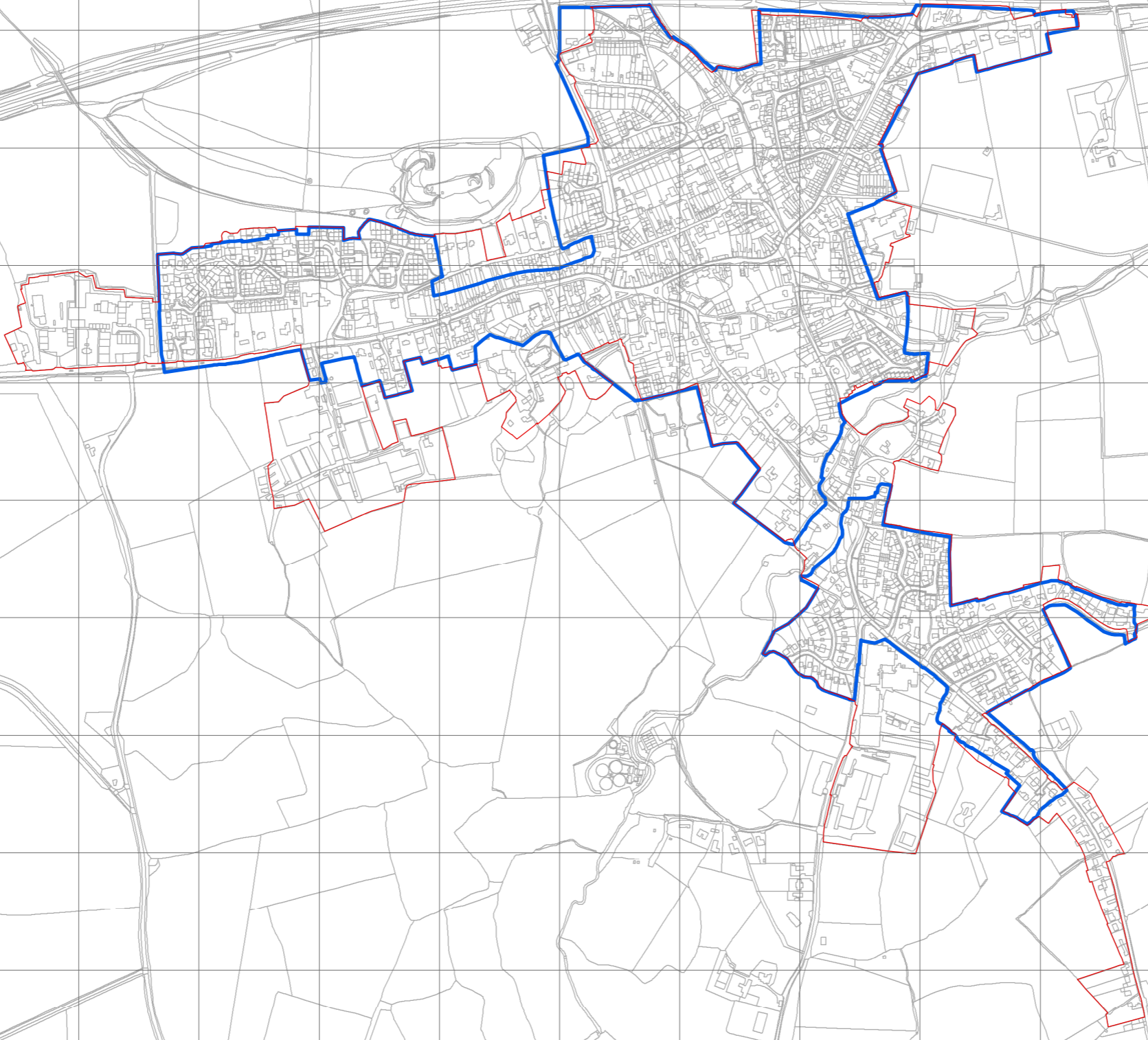
SettlementBoundaryReview_PreSubmission
Existing settlement boundary



Mere Community Area

A.90 The following settlement boundaries in the Mere Community Area have been reviewed by the Wiltshire Housing Site Allocations Plan:

- Mere

**Mere
Proposals for Revised Settlement Boundaries**



	SettlementBoundaryReview_PreSubmission
	Existing settlement boundary

Salisbury Community Area

A.92 The following settlement boundaries in the Salisbury Community Area have been reviewed by the Wiltshire Housing Site Allocations Plan:

- Salisbury

Salisbury
Proposals for Revised Settlement Boundaries

SettlementBoundaryReview_PreSubmission
Existing settlement boundary

Southern Wiltshire Community Area

A.94 The following settlement boundaries in the Southern Wiltshire Community Area have been reviewed by the Wiltshire Housing Site Allocations Plan:

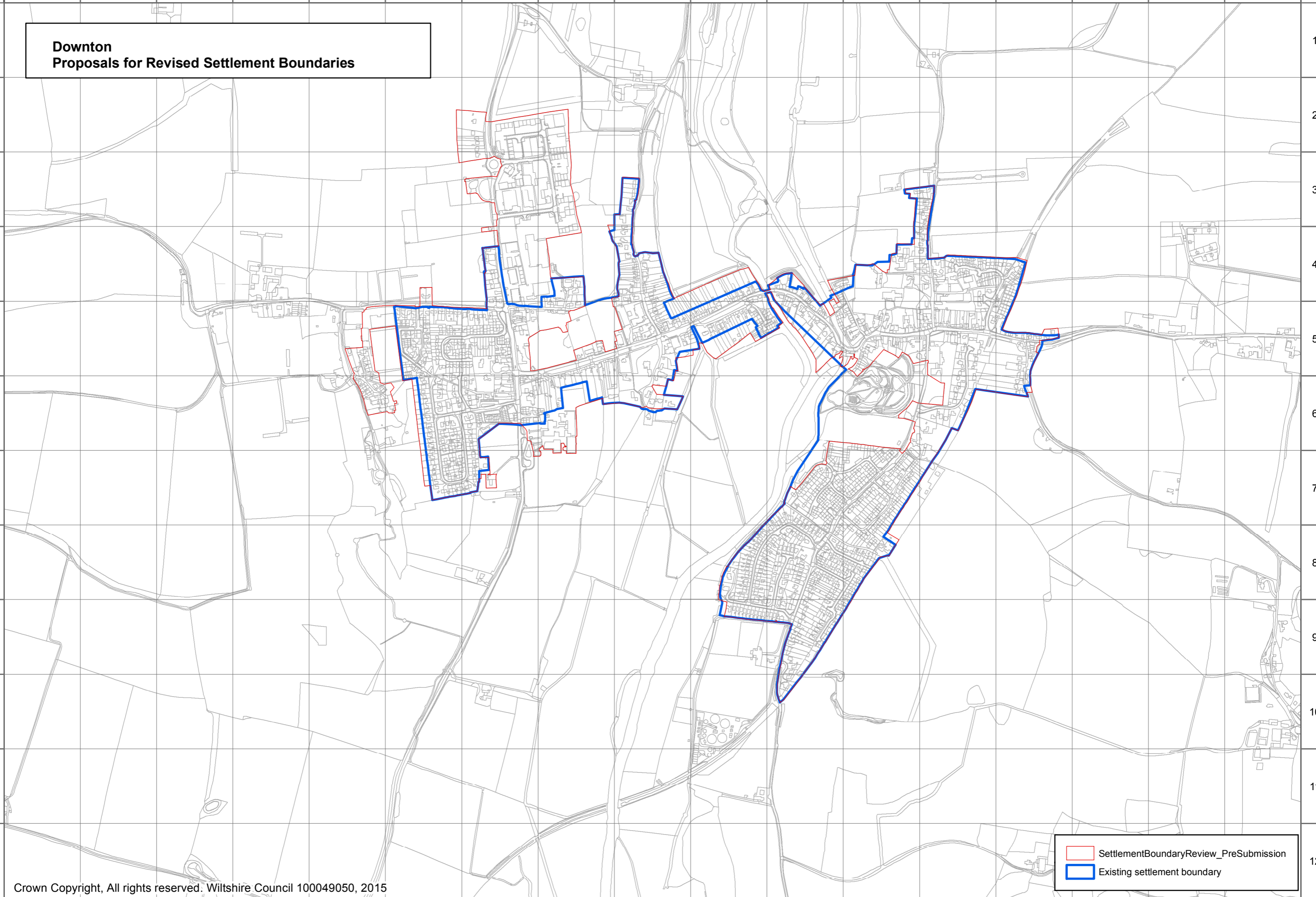
- Downton
- Alderbury
- Combe Bissett
- Morgan Vale and Woodfalls
- Pitton
- Whiteparish, and
- Winterslow

A B C D E F G H I J K L M N O P Q

1
2
3
4
5
6
7
8
9
10
11
12

**Downton
Proposals for Revised Settlement Boundaries**

1
2
3
4
5
6
7
8
9
10
11
12



SettlementBoundaryReview_PreSubmission
Existing settlement boundary

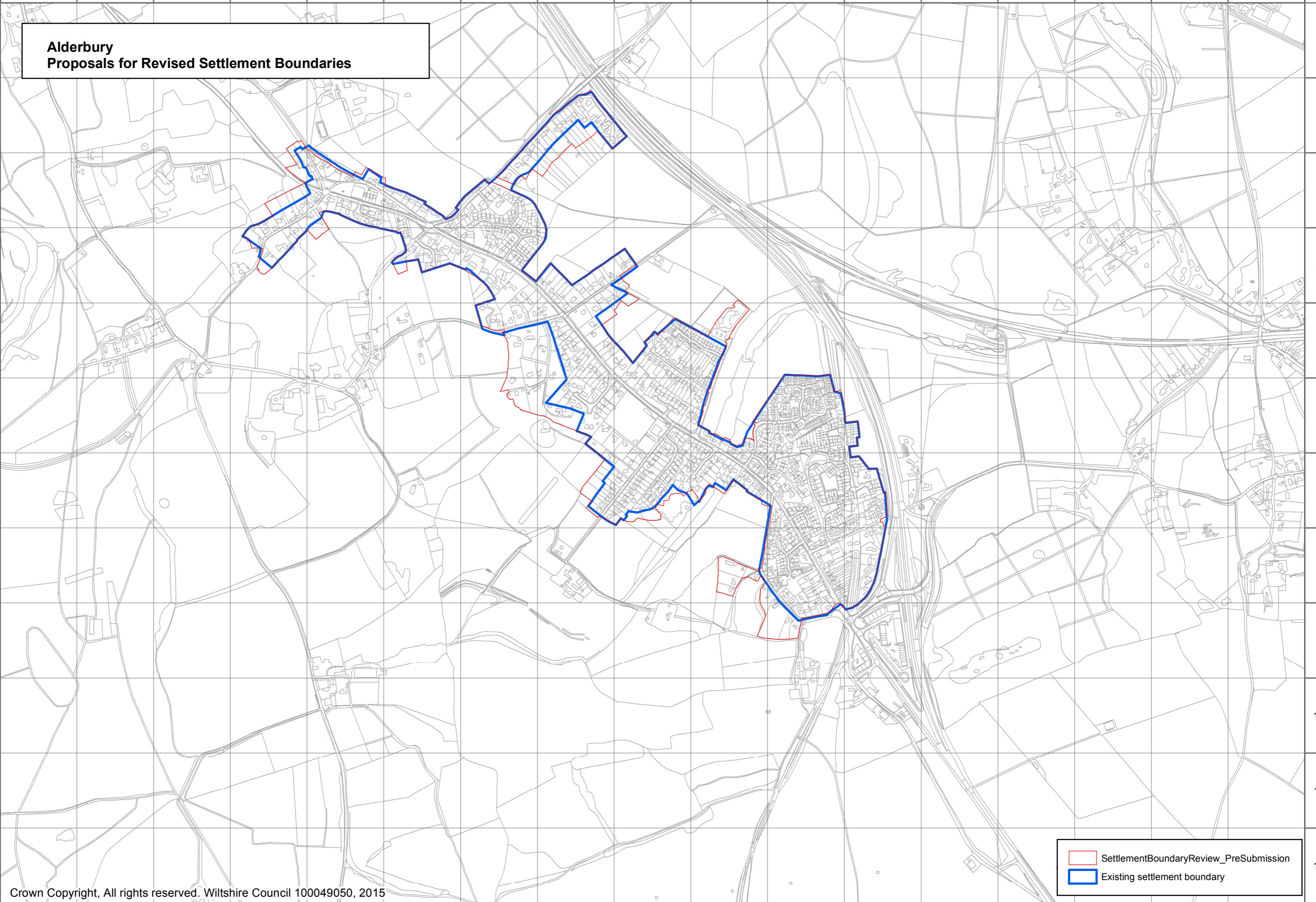
A B C D E F G H I J K L M N O P Q

A B C D E F G H I J K L M N O P Q

1
2
3
4
5
6
7
8
9
10
11
12

**Alderbury
Proposals for Revised Settlement Boundaries**

1
2
3
4
5
6
7
8
9
10
11
12



SettlementBoundaryReview_PreSubmission
Existing settlement boundary

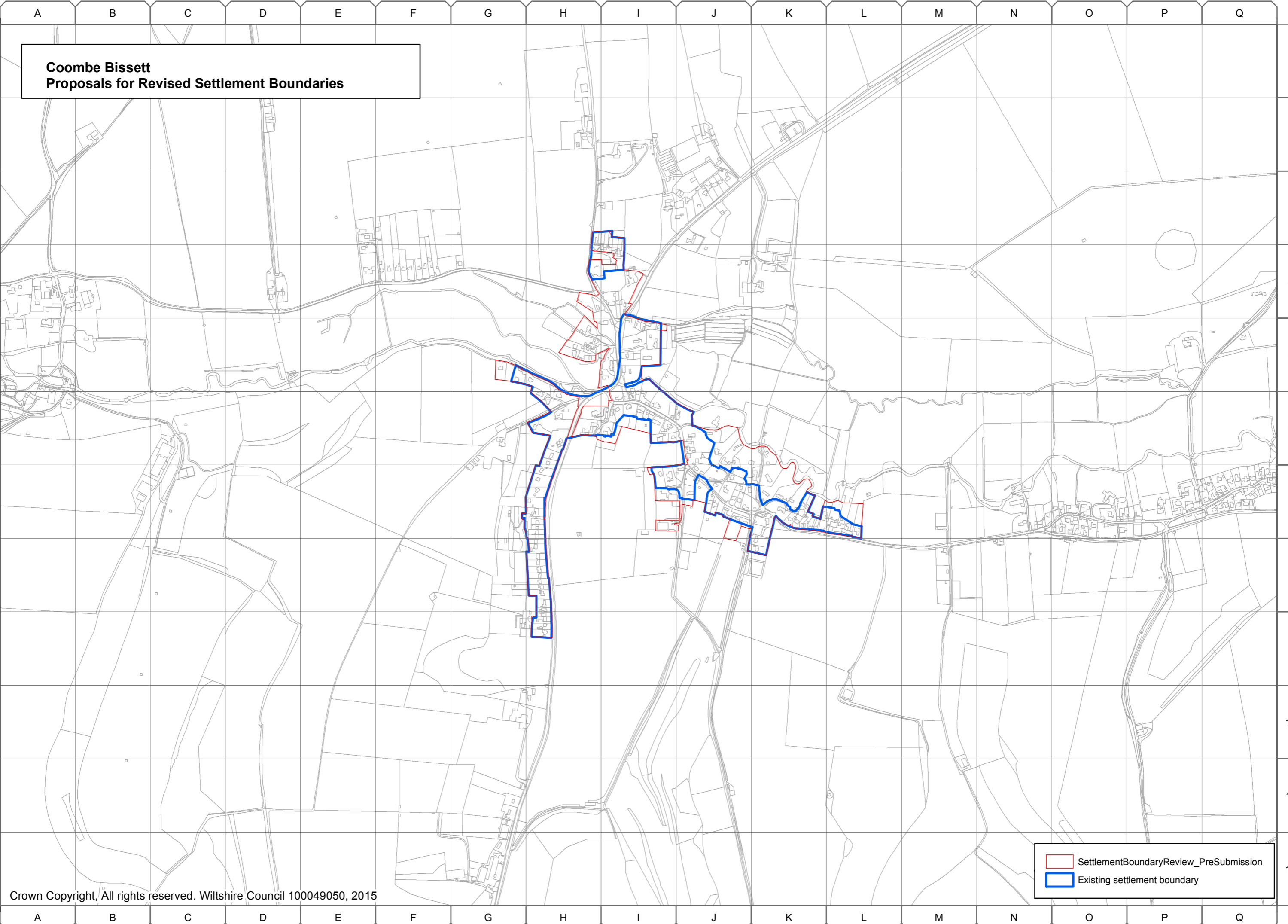
A B C D E F G H I J K L M N O P Q

A B C D E F G H I J K L M N O P Q

1
2
3
4
5
6
7
8
9
10
11
12

**Coombe Bissett
Proposals for Revised Settlement Boundaries**

1
2
3
4
5
6
7
8
9
10
11
12



SettlementBoundaryReview_PreSubmission
Existing settlement boundary

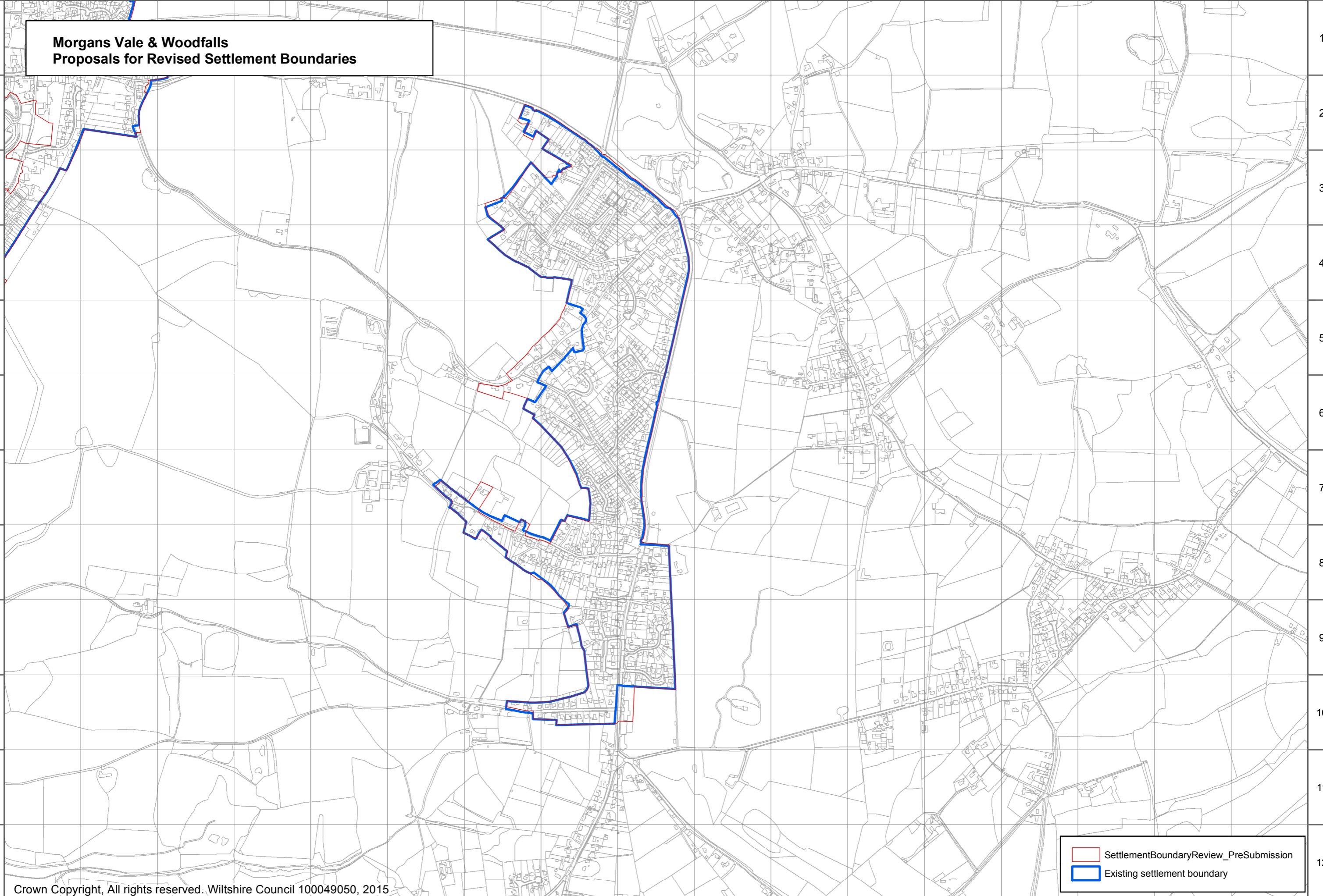
A B C D E F G H I J K L M N O P Q

A B C D E F G H I J K L M N O P Q

1
2
3
4
5
6
7
8
9
10
11
12

1
2
3
4
5
6
7
8
9
10
11
12

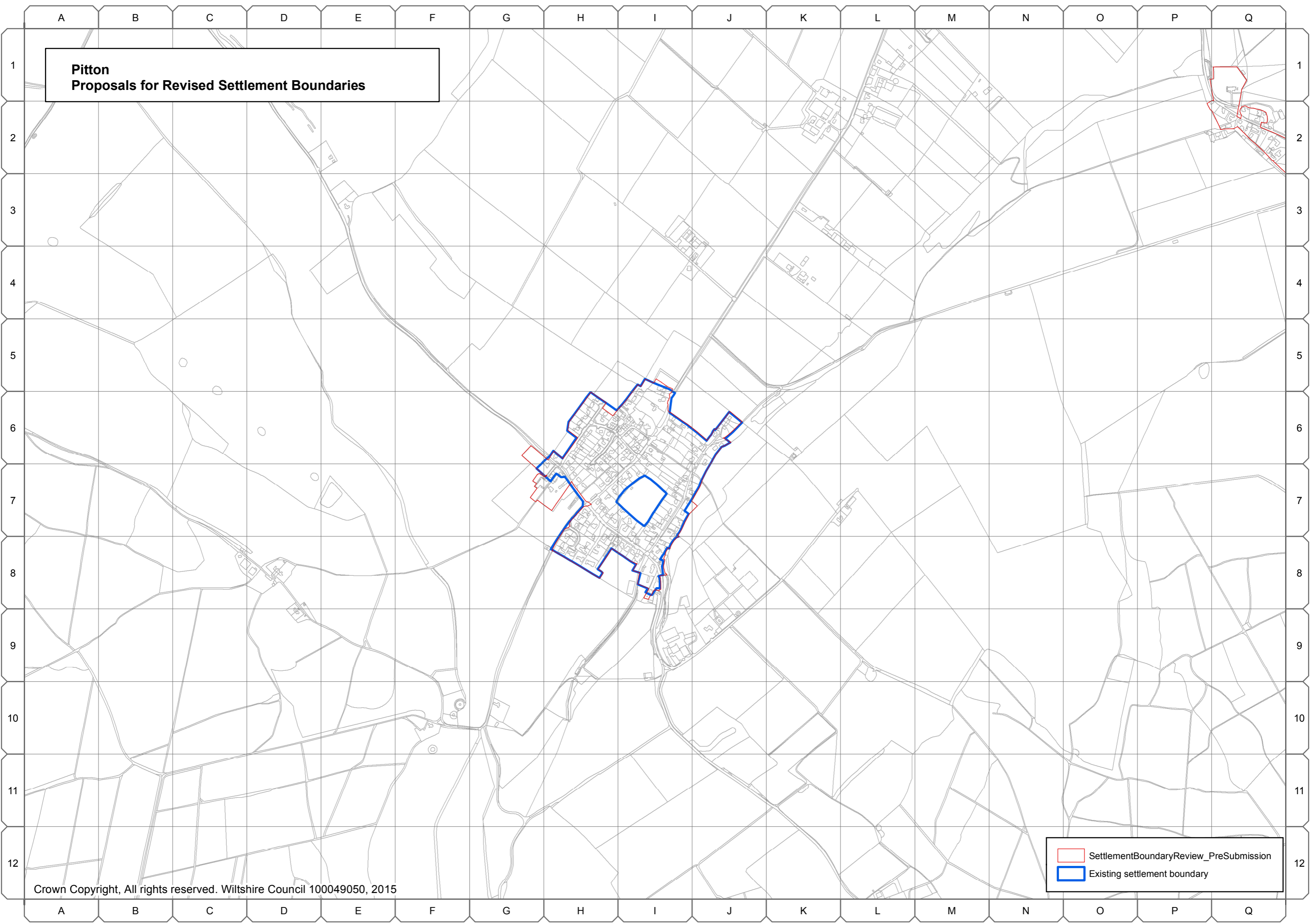
**Morgans Vale & Woodfalls
Proposals for Revised Settlement Boundaries**





SettlementBoundaryReview_PreSubmission
Existing settlement boundary

A B C D E F G H I J K L M N O P Q

**Pitton
Proposals for Revised Settlement Boundaries**

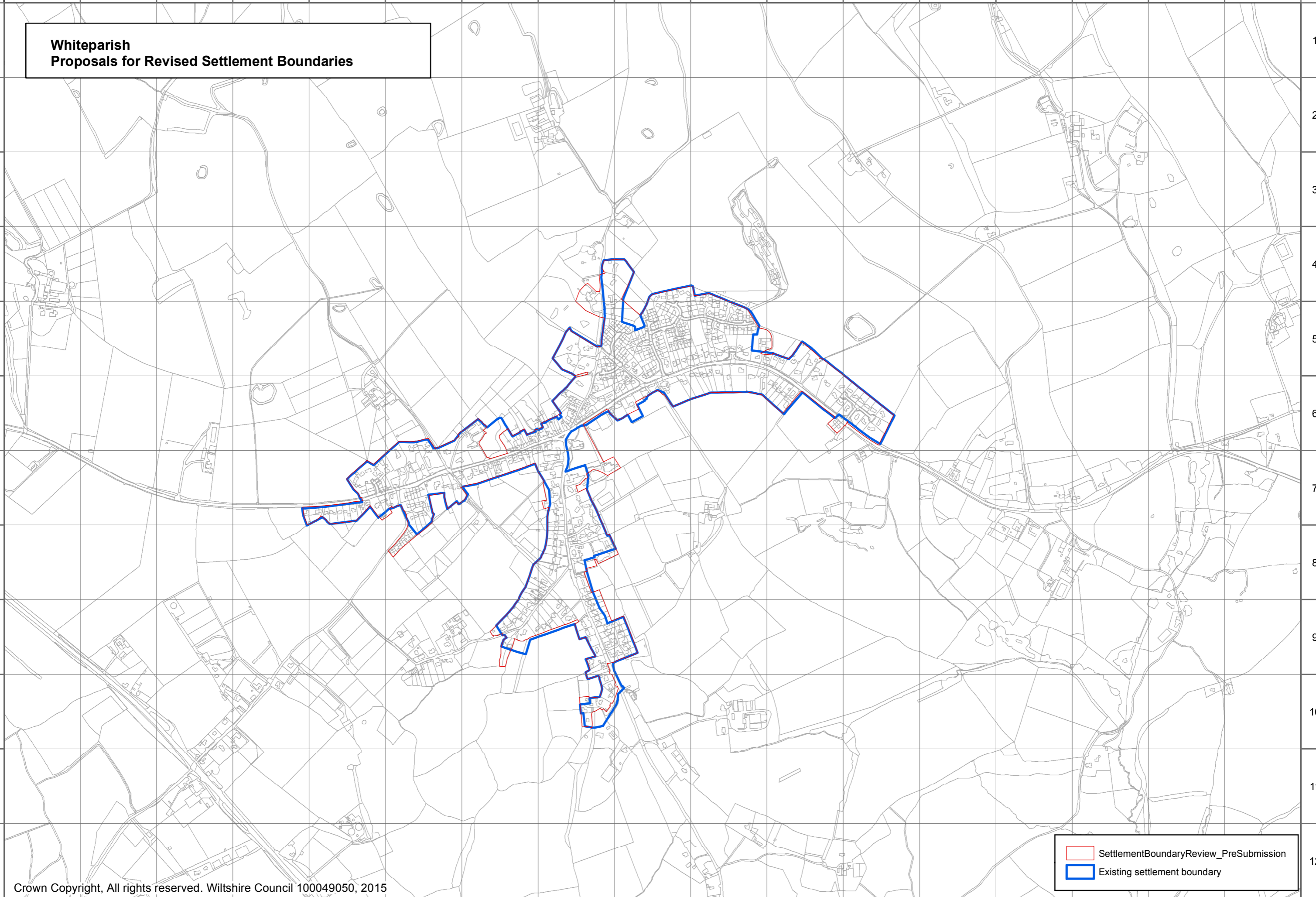


	SettlementBoundaryReview_PreSubmission
	Existing settlement boundary

A B C D E F G H I J K L M N O P Q

1
2
3
4
5
6
7
8
9
10
11
12

**Whiteparish
Proposals for Revised Settlement Boundaries**



SettlementBoundaryReview_PreSubmission
Existing settlement boundary

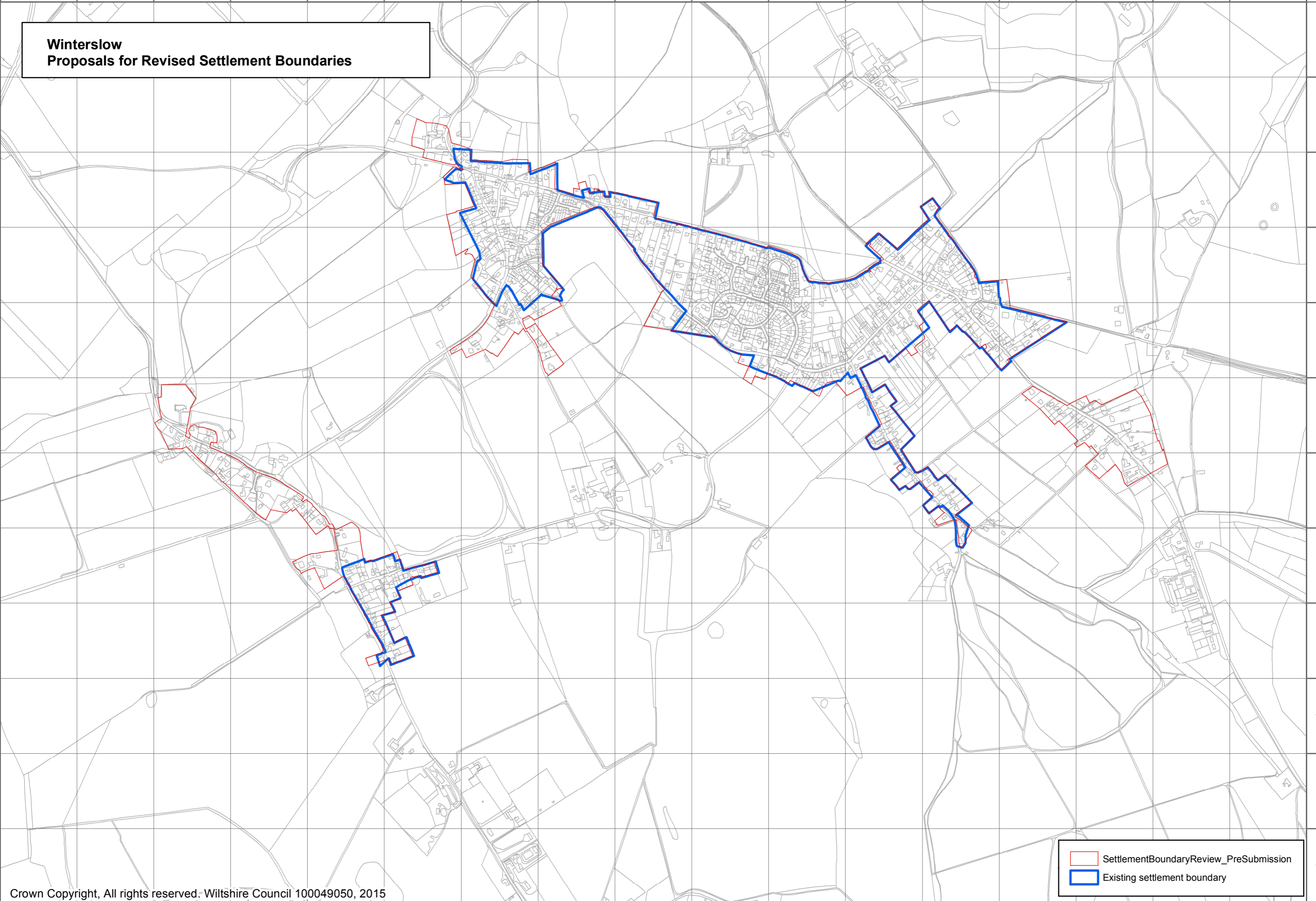
A B C D E F G H I J K L M N O P Q

A B C D E F G H I J K L M N O P Q

1
2
3
4
5
6
7
8
9
10
11
12

**Winterslow
Proposals for Revised Settlement Boundaries**

1
2
3
4
5
6
7
8
9
10
11
12



SettlementBoundaryReview_PreSubmission
Existing settlement boundary

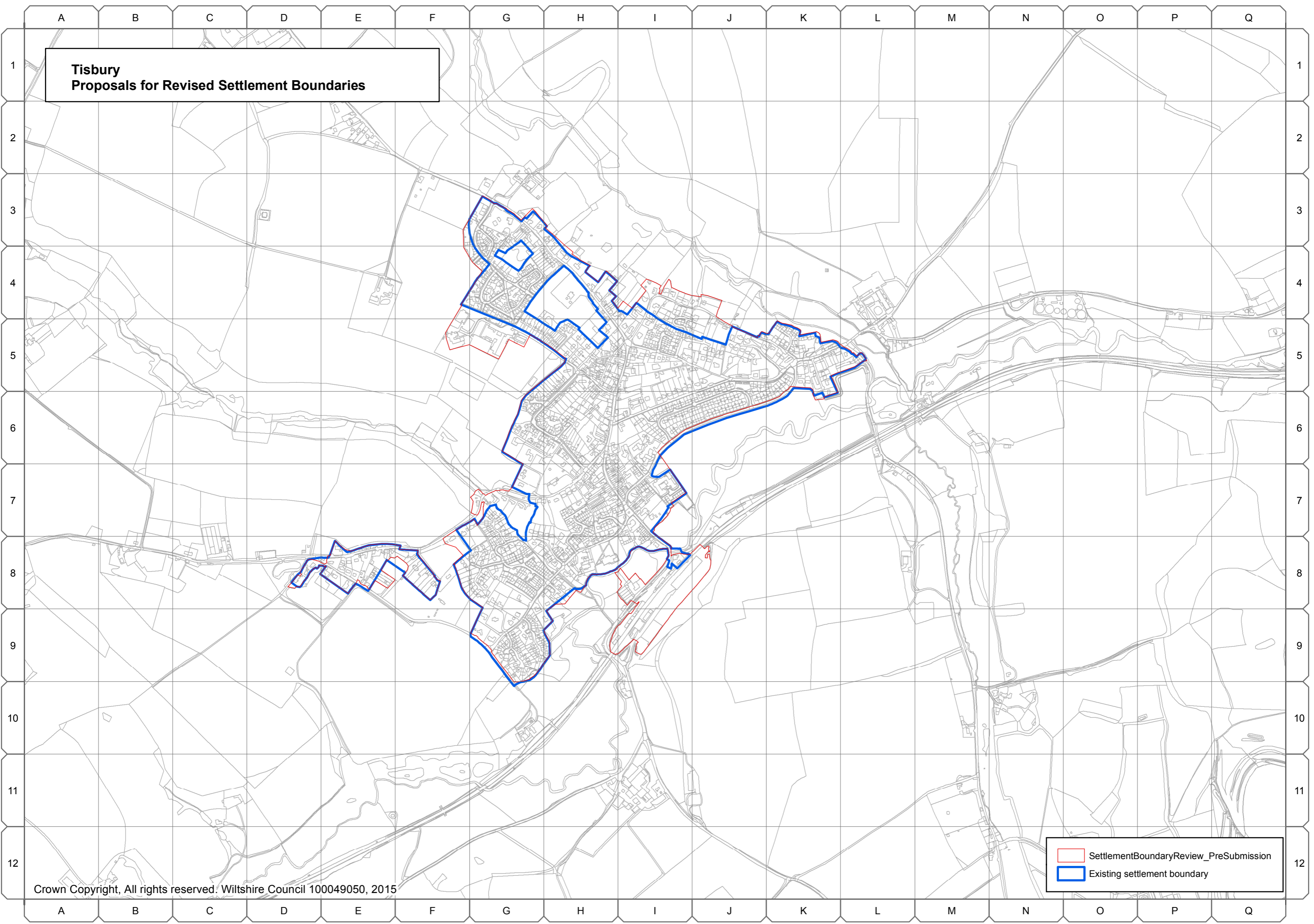
A B C D E F G H I J K L M N O P Q

Tisbury Community Area

A.102 The following settlement boundaries in the Tisbury Community Area have been reviewed by the Wiltshire Housing Site Allocations Plan:

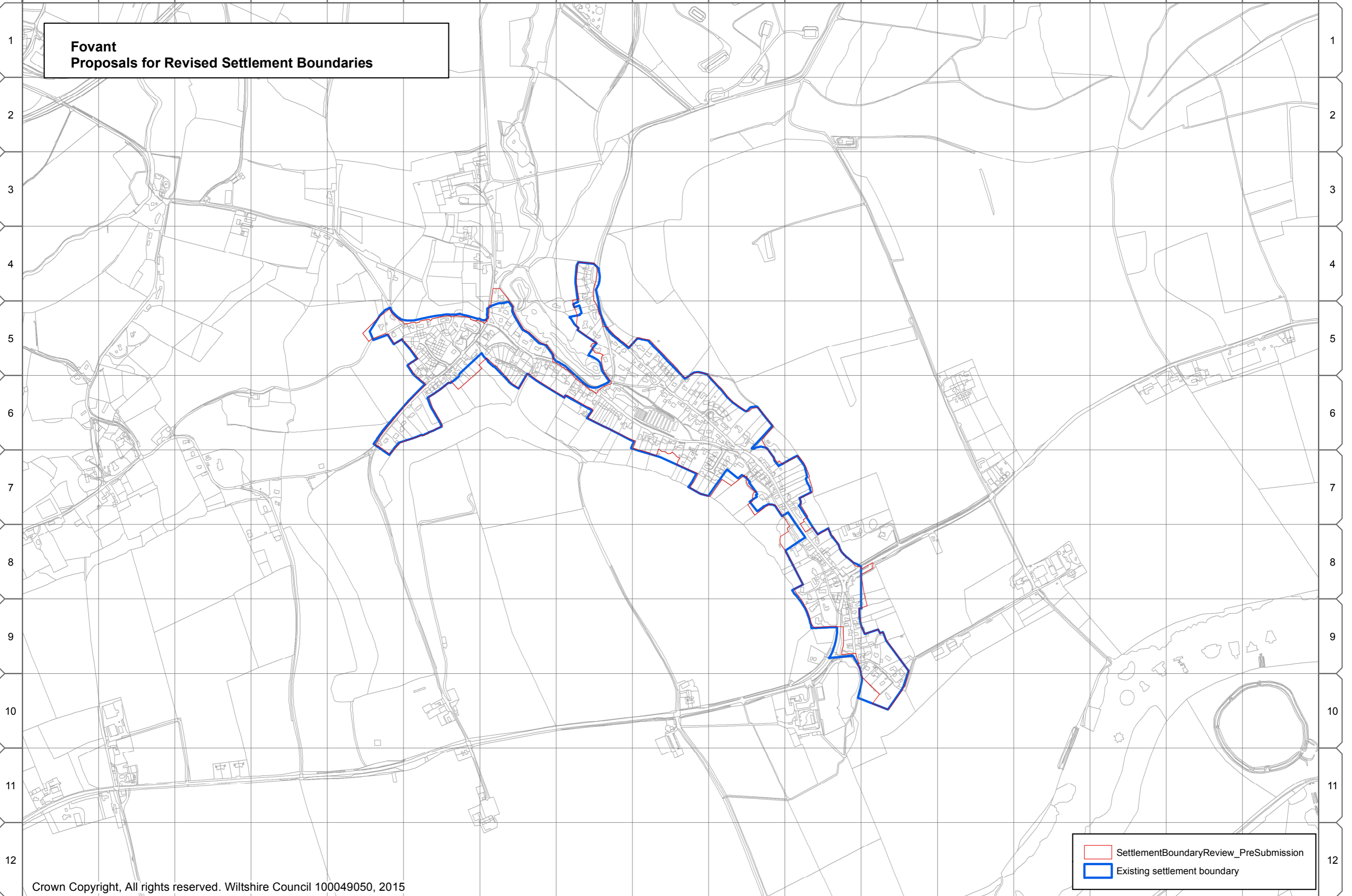
- Tisbury
- Fovant
- Hindon, and
- Ludwell

**Tisbury
Proposals for Revised Settlement Boundaries**



SettlementBoundaryReview_PreSubmission
Existing settlement boundary

A B C D E F G H I J K L M N O P Q

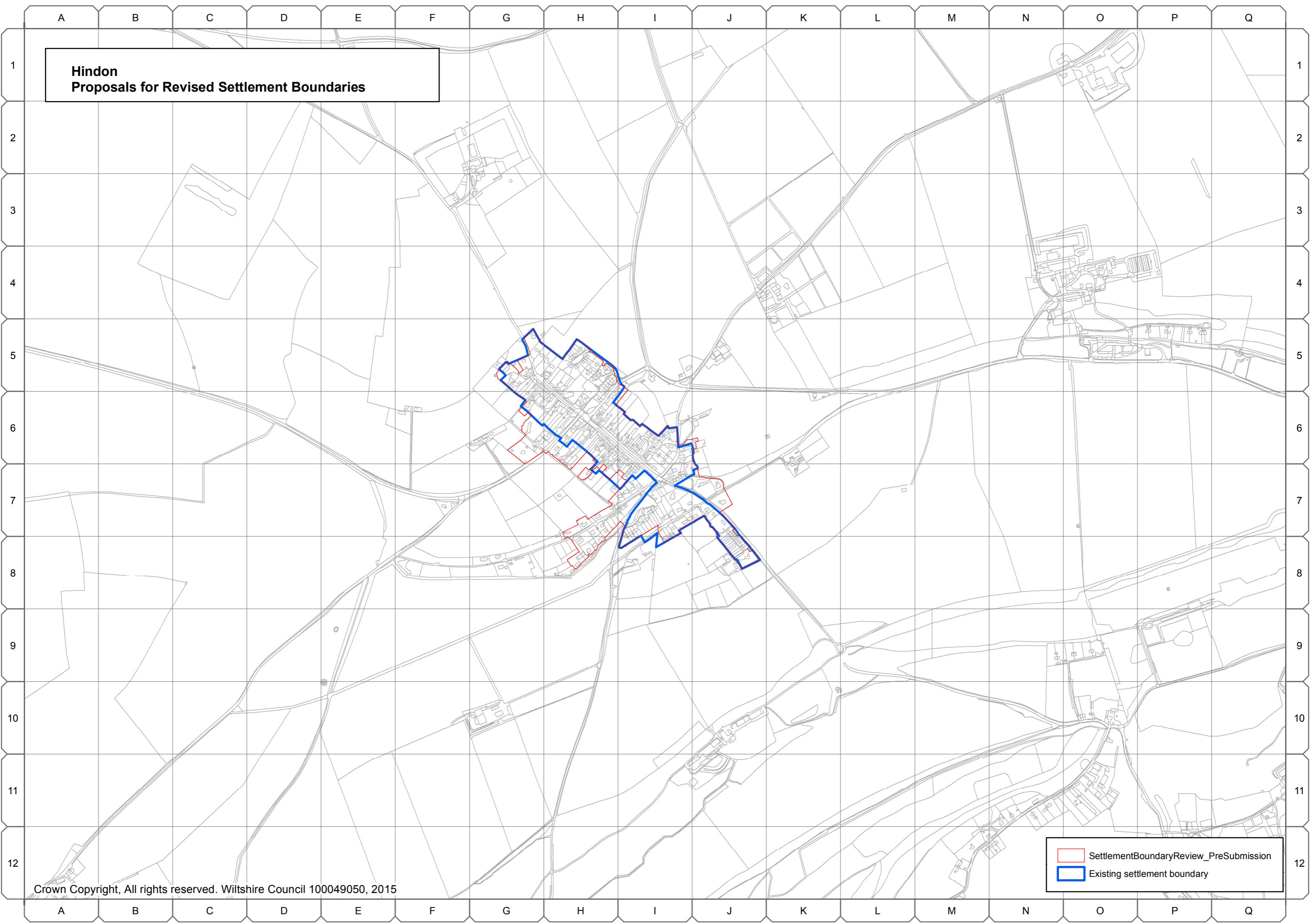


**Fovant
Proposals for Revised Settlement Boundaries**

SettlementBoundaryReview_PreSubmission
 Existing settlement boundary

A B C D E F G H I J K L M N O P Q

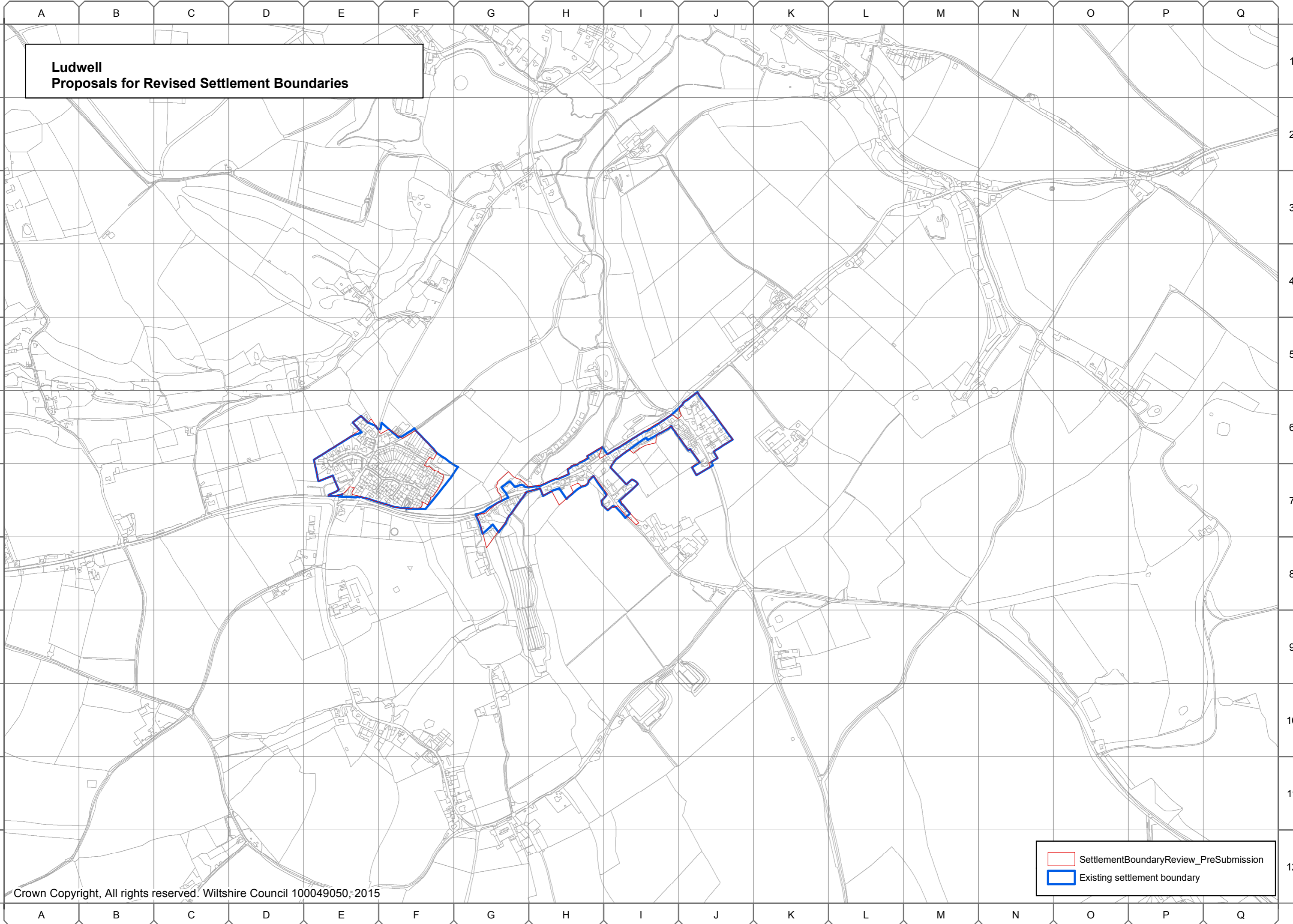
**Hindon
Proposals for Revised Settlement Boundaries**



Legend:

- SettlementBoundaryReview_PreSubmission
- Existing settlement boundary

**Ludwell
Proposals for Revised Settlement Boundaries**



SettlementBoundaryReview_PreSubmission
Existing settlement boundary

Wilton Community Area

A.107 The following settlement boundaries in the Wilton Community Area have been reviewed by the Wiltshire Housing Site Allocations Plan:

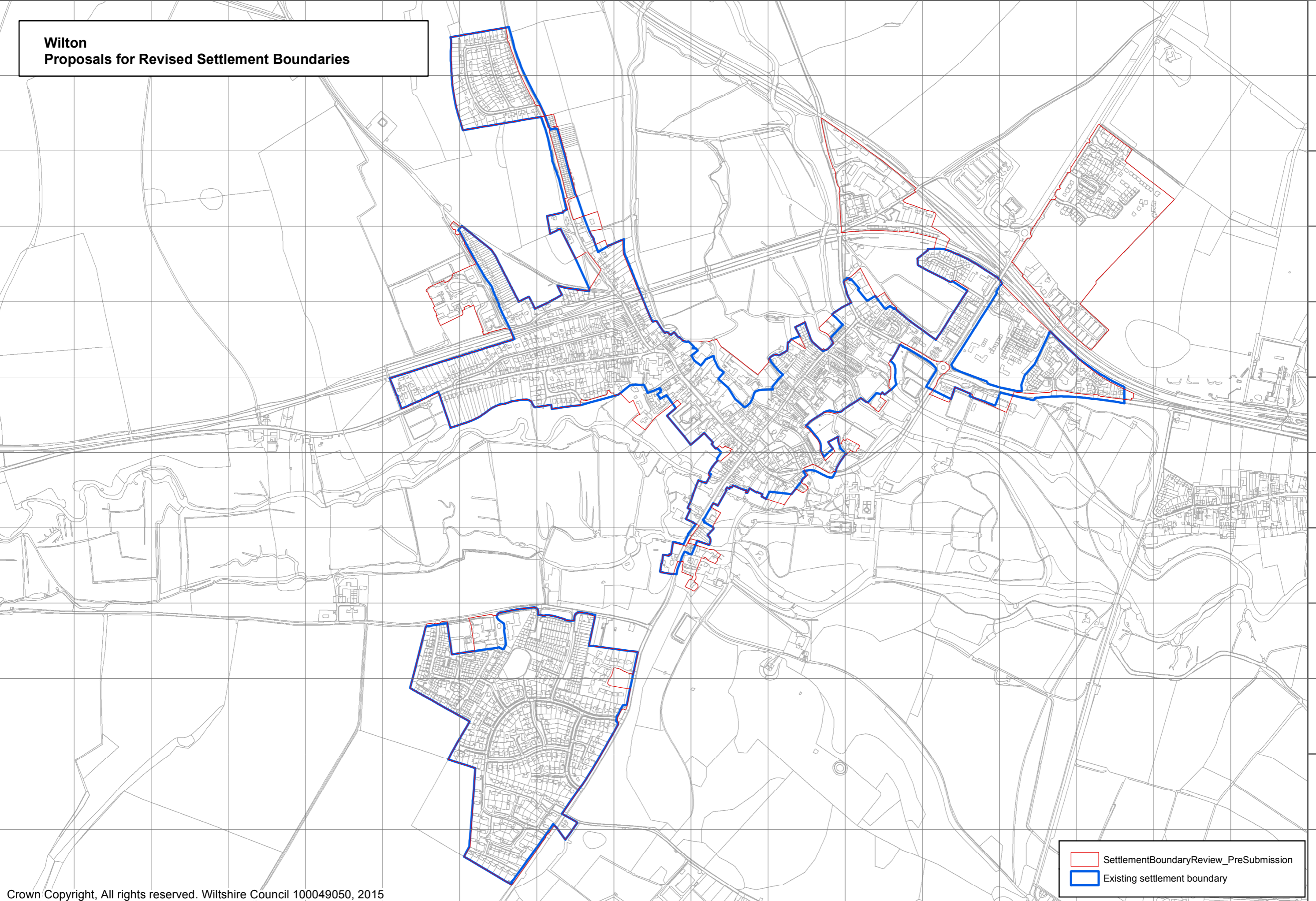
- Wilton
- Broad Chalke, and
- Dinton

A B C D E F G H I J K L M N O P Q

1
2
3
4
5
6
7
8
9
10
11
12

**Wilton
Proposals for Revised Settlement Boundaries**

1
2
3
4
5
6
7
8
9
10
11
12



SettlementBoundaryReview_PreSubmission
Existing settlement boundary

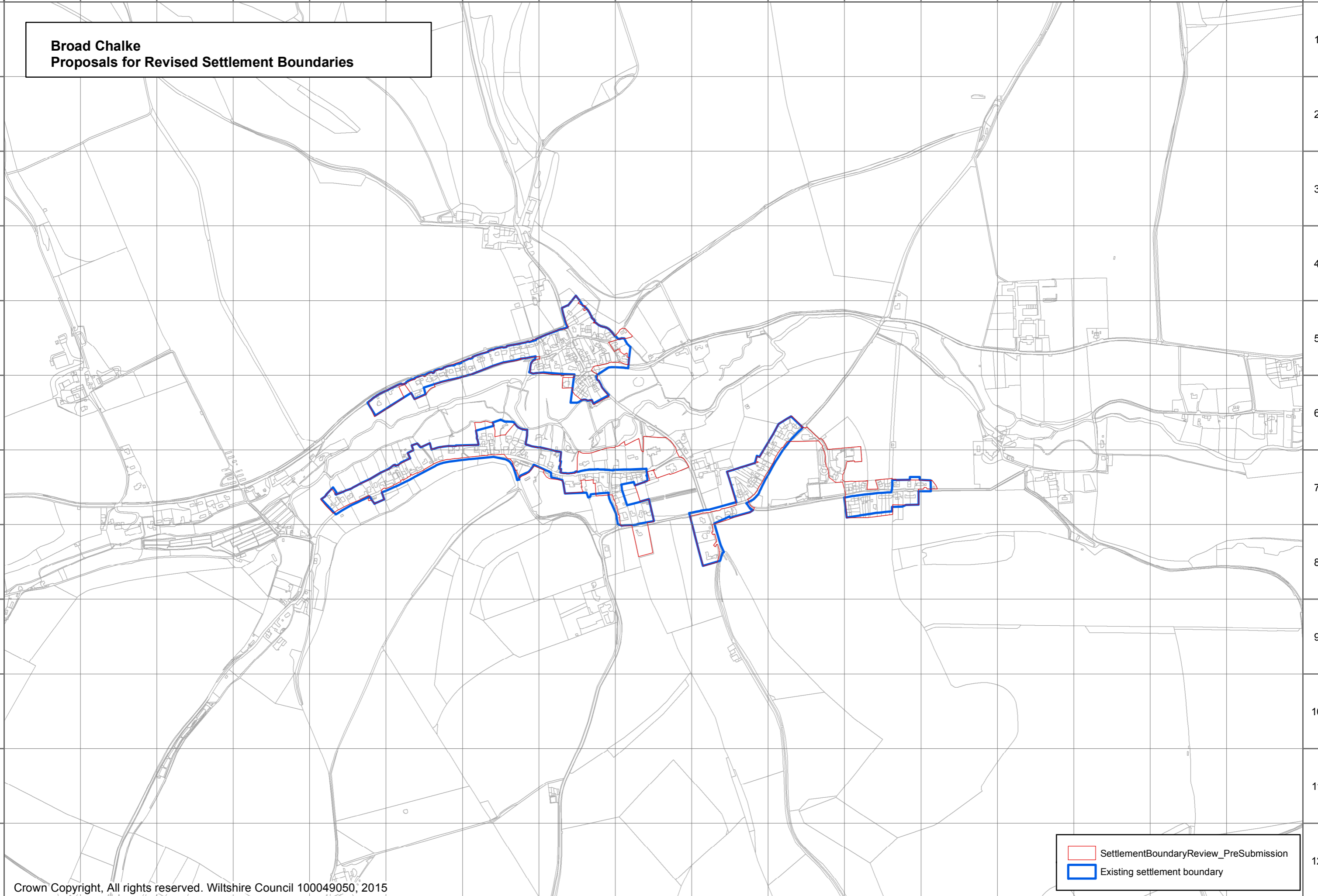
A B C D E F G H I J K L M N O P Q

A B C D E F G H I J K L M N O P Q

1
2
3
4
5
6
7
8
9
10
11
12

**Broad Chalke
Proposals for Revised Settlement Boundaries**

1
2
3
4
5
6
7
8
9
10
11
12



SettlementBoundaryReview_PreSubmission
Existing settlement boundary

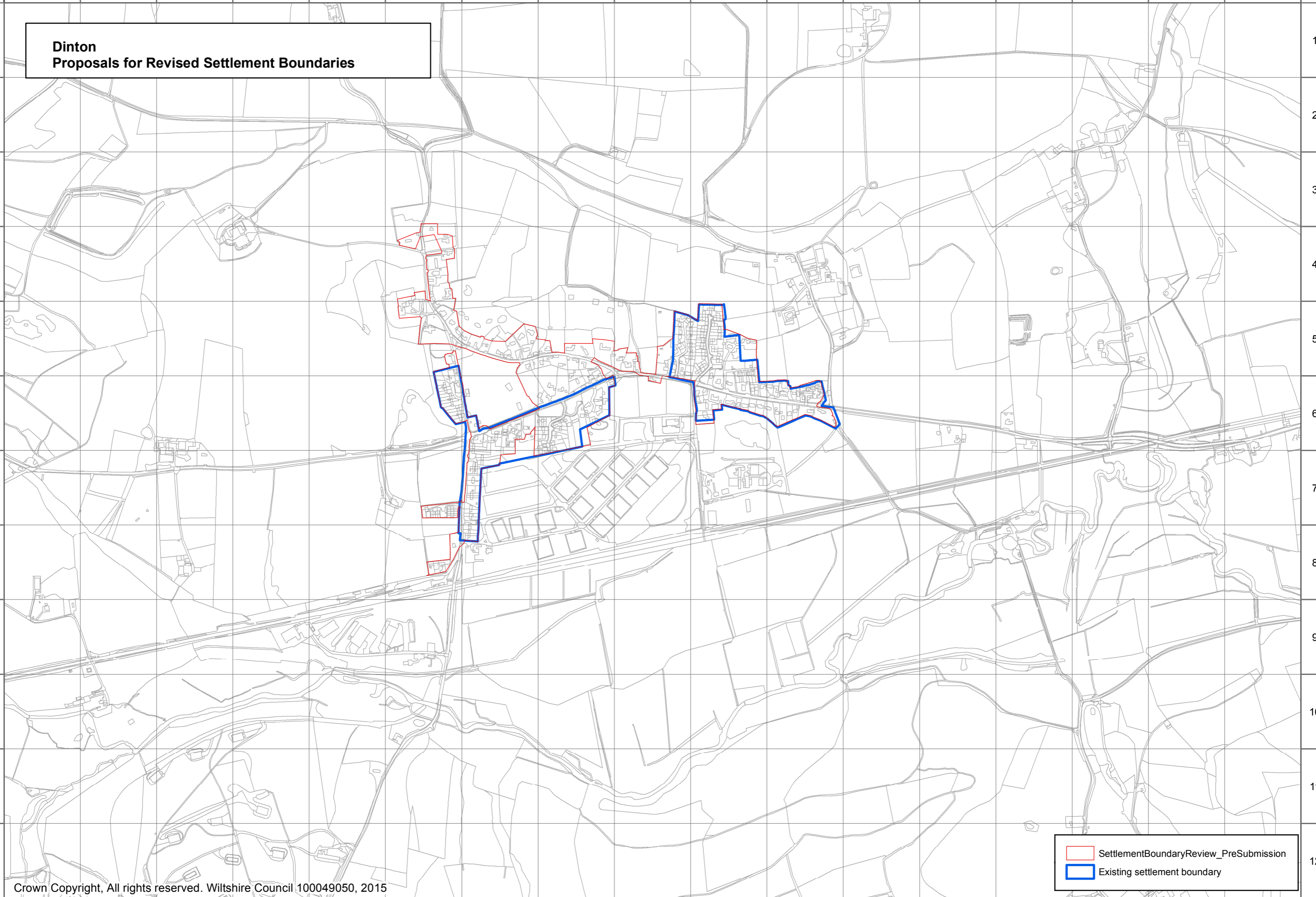
A B C D E F G H I J K L M N O P Q

A B C D E F G H I J K L M N O P Q

1
2
3
4
5
6
7
8
9
10
11
12

**Dinton
Proposals for Revised Settlement Boundaries**

1
2
3
4
5
6
7
8
9
10
11
12



SettlementBoundaryReview_PreSubmission
Existing settlement boundary

A B C D E F G H I J K L M N O P Q

This document was published by the Spatial Planning team, Wiltshire Council, Economic Development and Planning Services.

For further information please visit the following website:

<http://www.wiltshire.gov.uk/wiltshsgsiteallocationsplan.htm>