

North and West Wiltshire Housing Market Area

Bradford on Avon Community Area

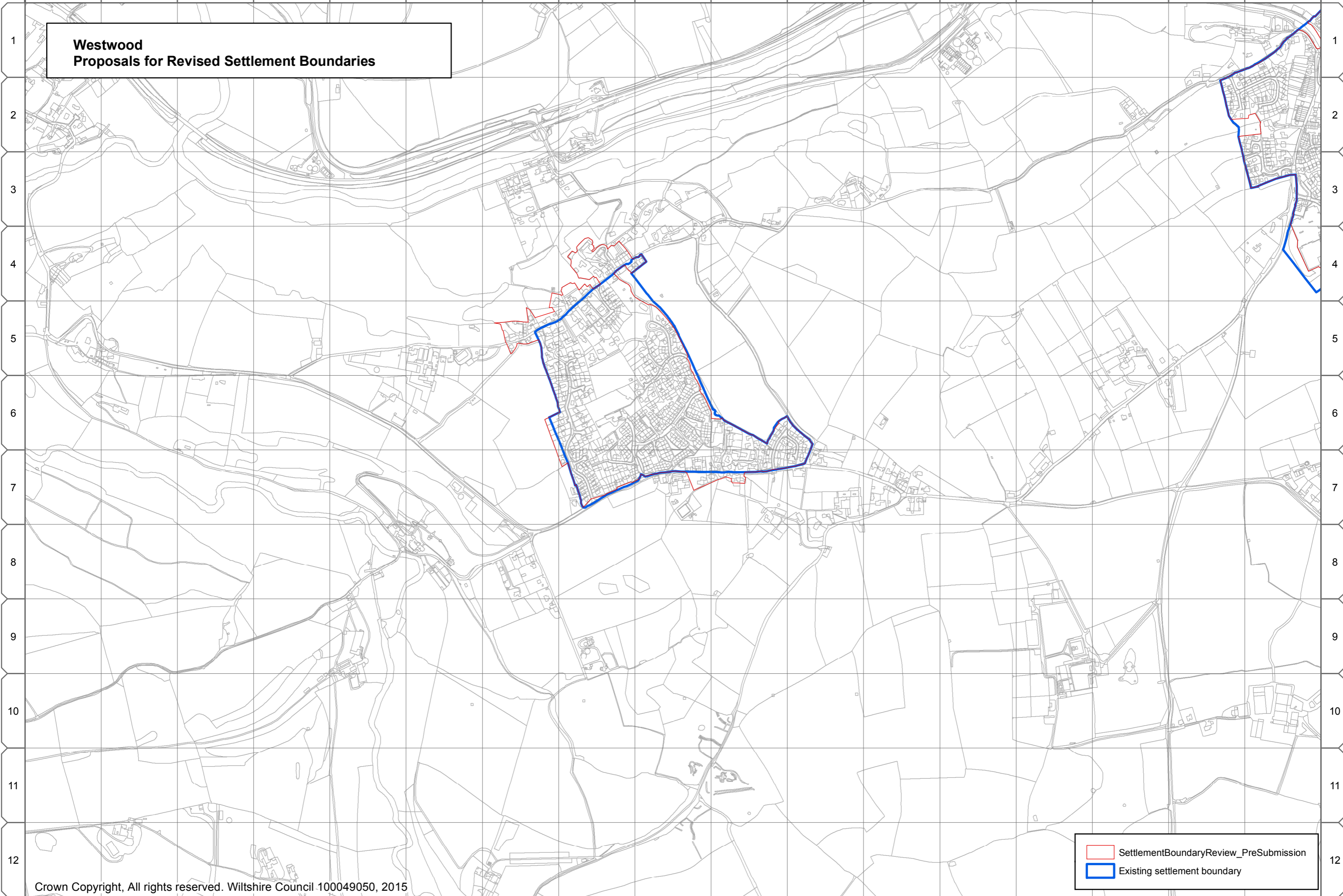
A.27 The following settlement boundaries in the Bradford on Avon Community Area have been reviewed by the Wiltshire Housing Site Allocations Plan:

- Westwood, and
- Winsley

A.28 The settlement boundaries for Bradford on Avon and Holt have not been reviewed because of neighbourhood plans.

A B C D E F G H I J K L M N O P Q

**Westwood
Proposals for Revised Settlement Boundaries**



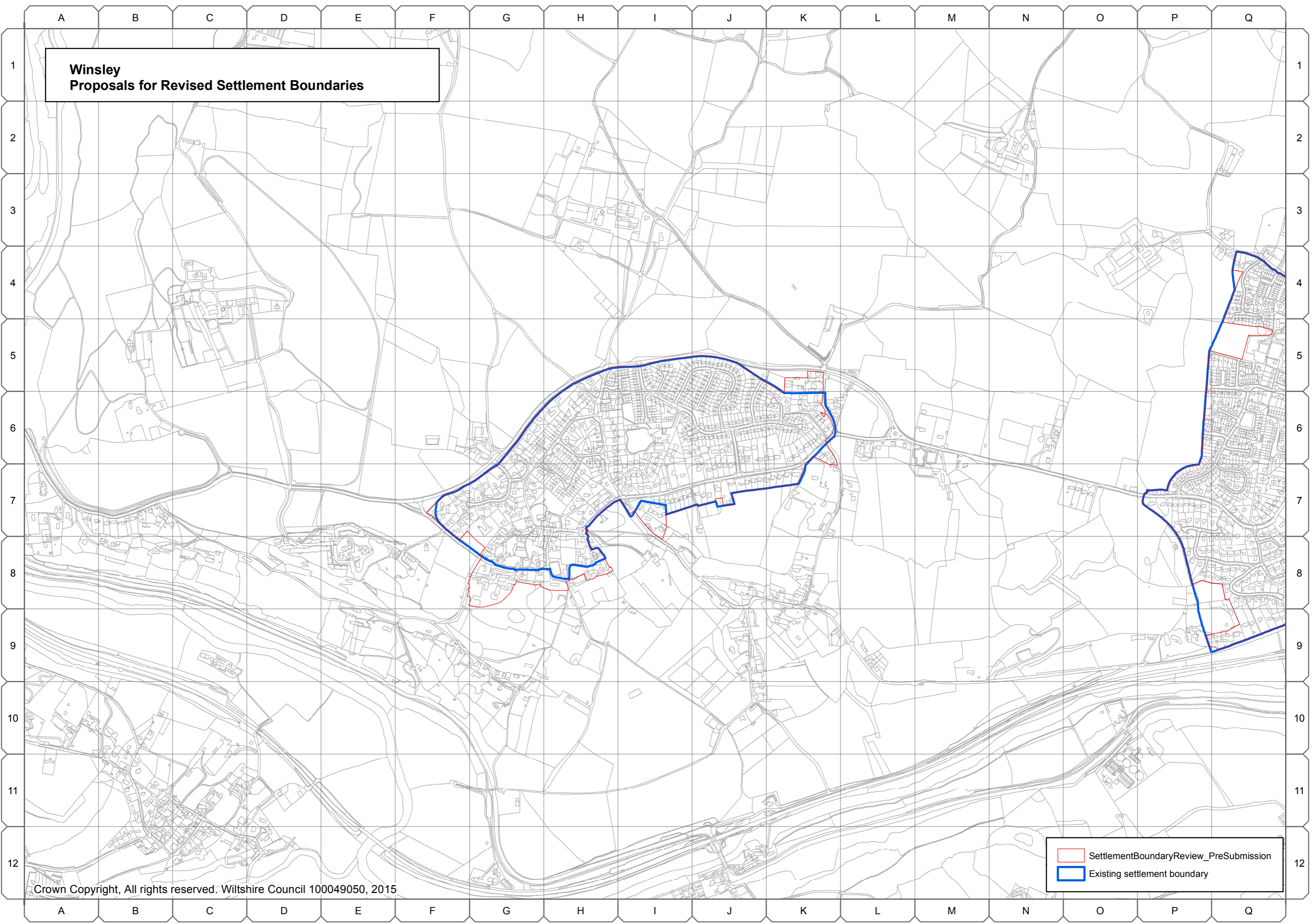
1
2
3
4
5
6
7
8
9
10
11
12

1
2
3
4
5
6
7
8
9
10
11
12

SettlementBoundaryReview_PreSubmission
Existing settlement boundary

A B C D E F G H I J K L M N O P Q

**Winsley
Proposals for Revised Settlement Boundaries**



SettlementBoundaryReview_PreSubmission
Existing settlement boundary

Calne Community Area

A.31 The following settlement boundaries in the Calne Community Area have been reviewed by the Wiltshire Housing Site Allocations Plan:

- Calne, and
- Studley and Derry Hill



**Calne
Proposals for Revised Settlement Boundaries**

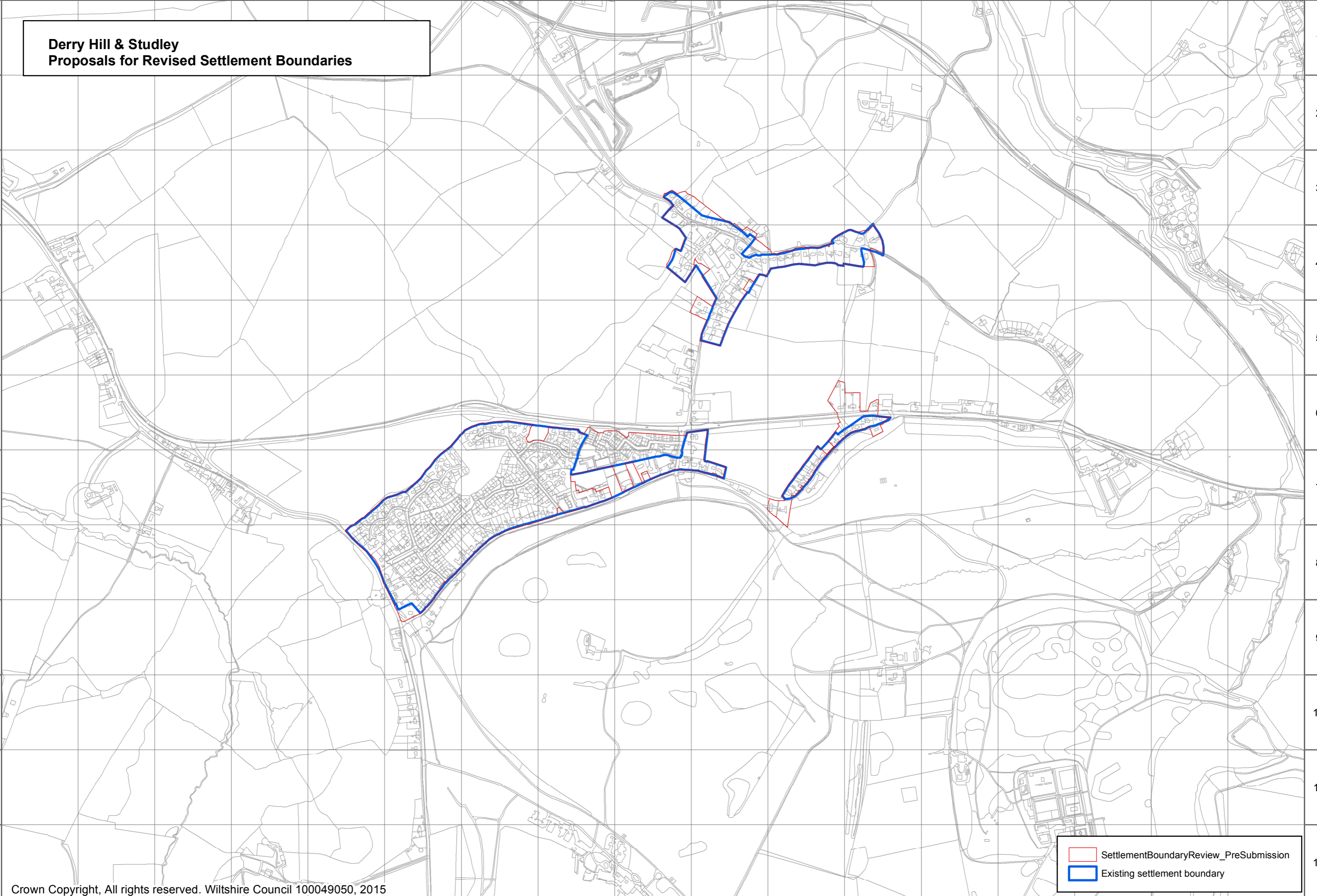
- SettlementBoundaryReview_PreSubmission
- Existing settlement boundary

A B C D E F G H I J K L M N O P Q

1
2
3
4
5
6
7
8
9
10
11
12

**Derry Hill & Studley
Proposals for Revised Settlement Boundaries**

1
2
3
4
5
6
7
8
9
10
11
12



SettlementBoundaryReview_PreSubmission
Existing settlement boundary

A B C D E F G H I J K L M N O P Q

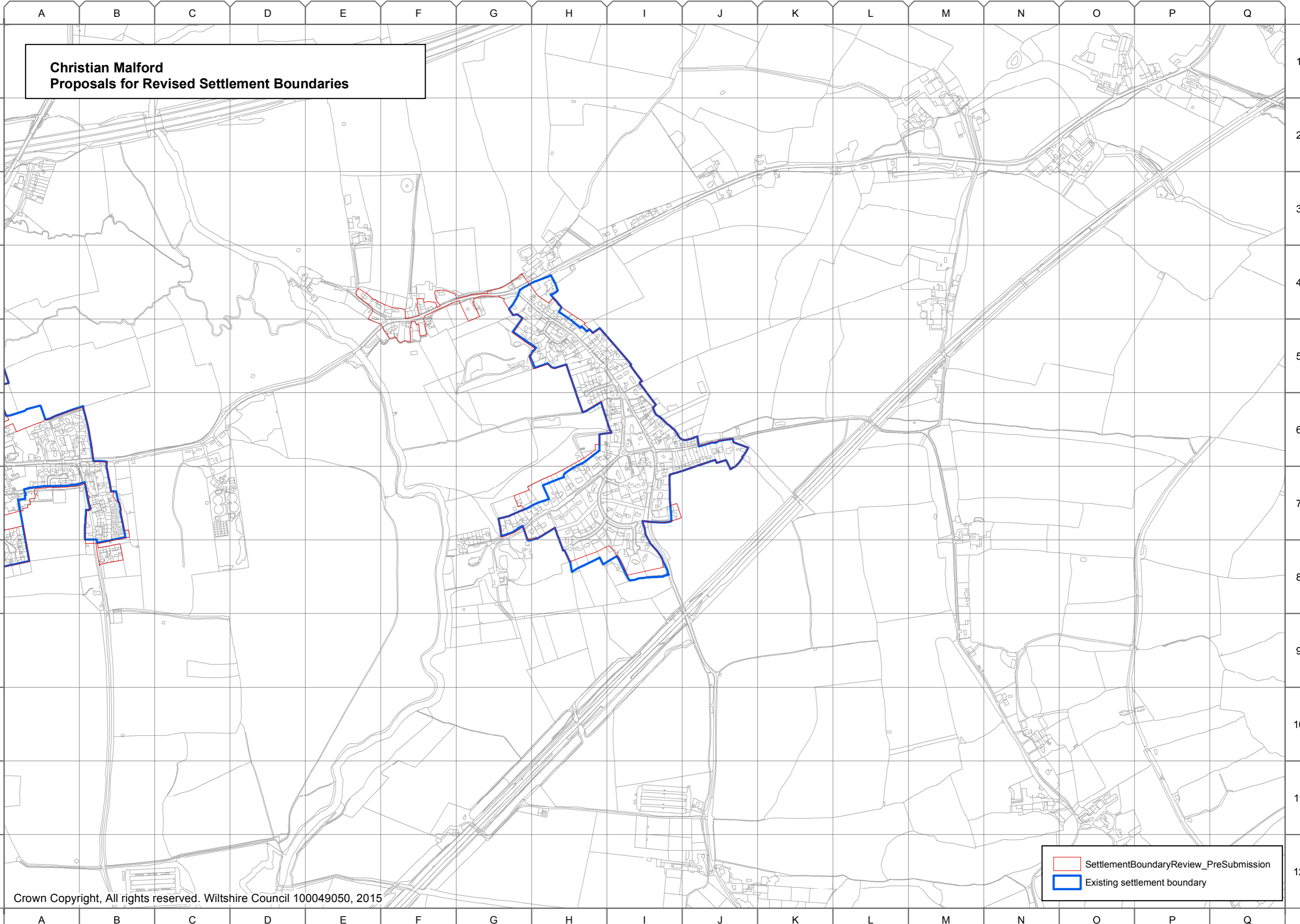
Chippenham Community Area Remainder

A.34 The following settlement boundaries in the Chippenham Community Area Remainder have been reviewed by the Wiltshire Housing Site Allocations Plan:

- Christian Malford
- Hullavington
- Kington St Michael
- Sutton Benger, and
- Yatton Keynell

A.35 The settlement boundary for the town of Chippenham has been reviewed by the Chippenham Site Allocations Plan.

**Christian Malford
Proposals for Revised Settlement Boundaries**



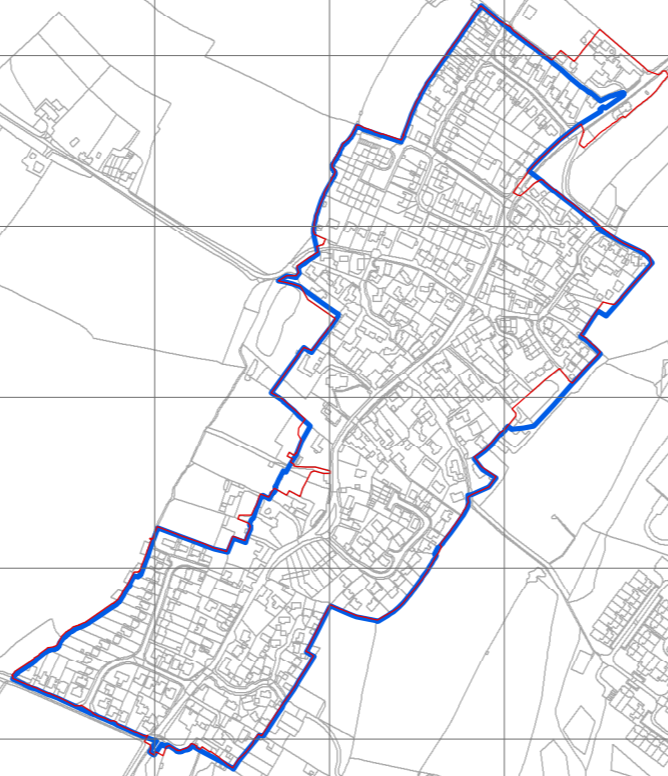
SettlementBoundaryReview_PreSubmission
Existing settlement boundary

A B C D E F G H I J K L M N O P Q

1
2
3
4
5
6
7
8
9
10
11
12

1
2
3
4
5
6
7
8
9
10
11
12

**Hullavington
Proposals for Revised Settlement Boundaries**



SettlementBoundaryReview_PreSubmission
Existing settlement boundary

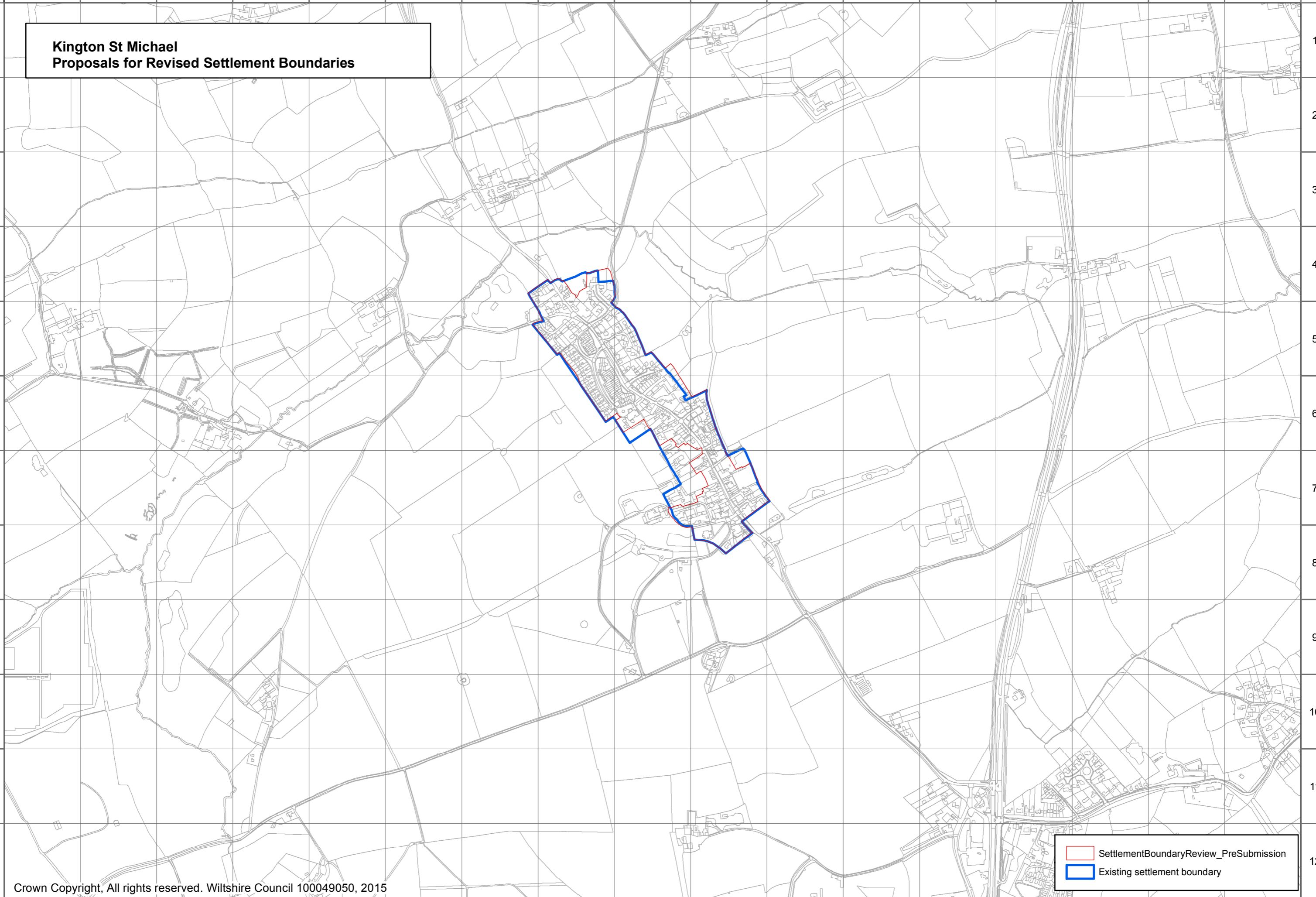
A B C D E F G H I J K L M N O P Q

A B C D E F G H I J K L M N O P Q

1
2
3
4
5
6
7
8
9
10
11
12

1
2
3
4
5
6
7
8
9
10
11
12

**Kington St Michael
Proposals for Revised Settlement Boundaries**



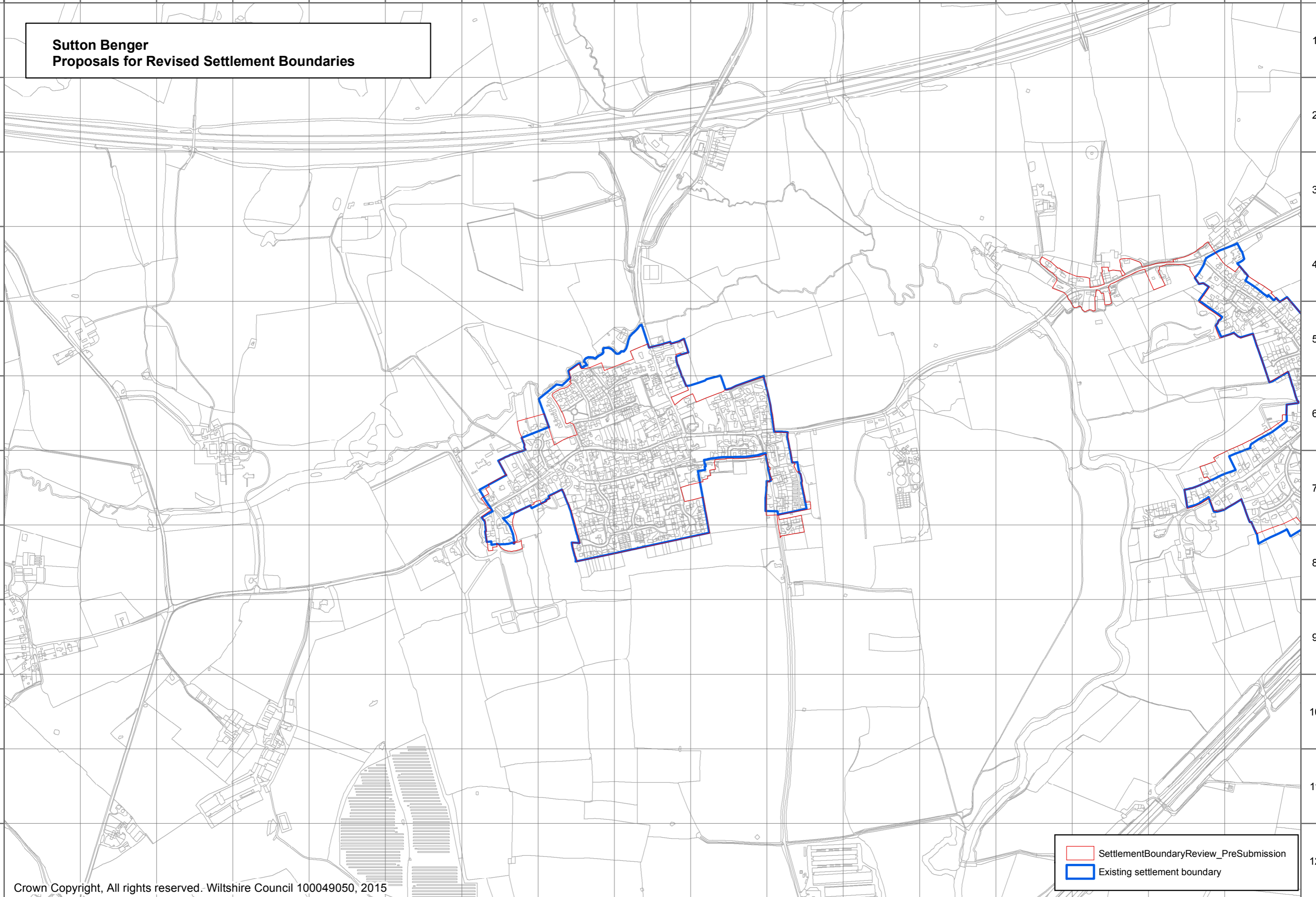
SettlementBoundaryReview_PreSubmission
Existing settlement boundary

A B C D E F G H I J K L M N O P Q

A B C D E F G H I J K L M N O P Q

1
2
3
4
5
6
7
8
9
10
11
12

**Sutton Benger
Proposals for Revised Settlement Boundaries**



SettlementBoundaryReview_PreSubmission
Existing settlement boundary

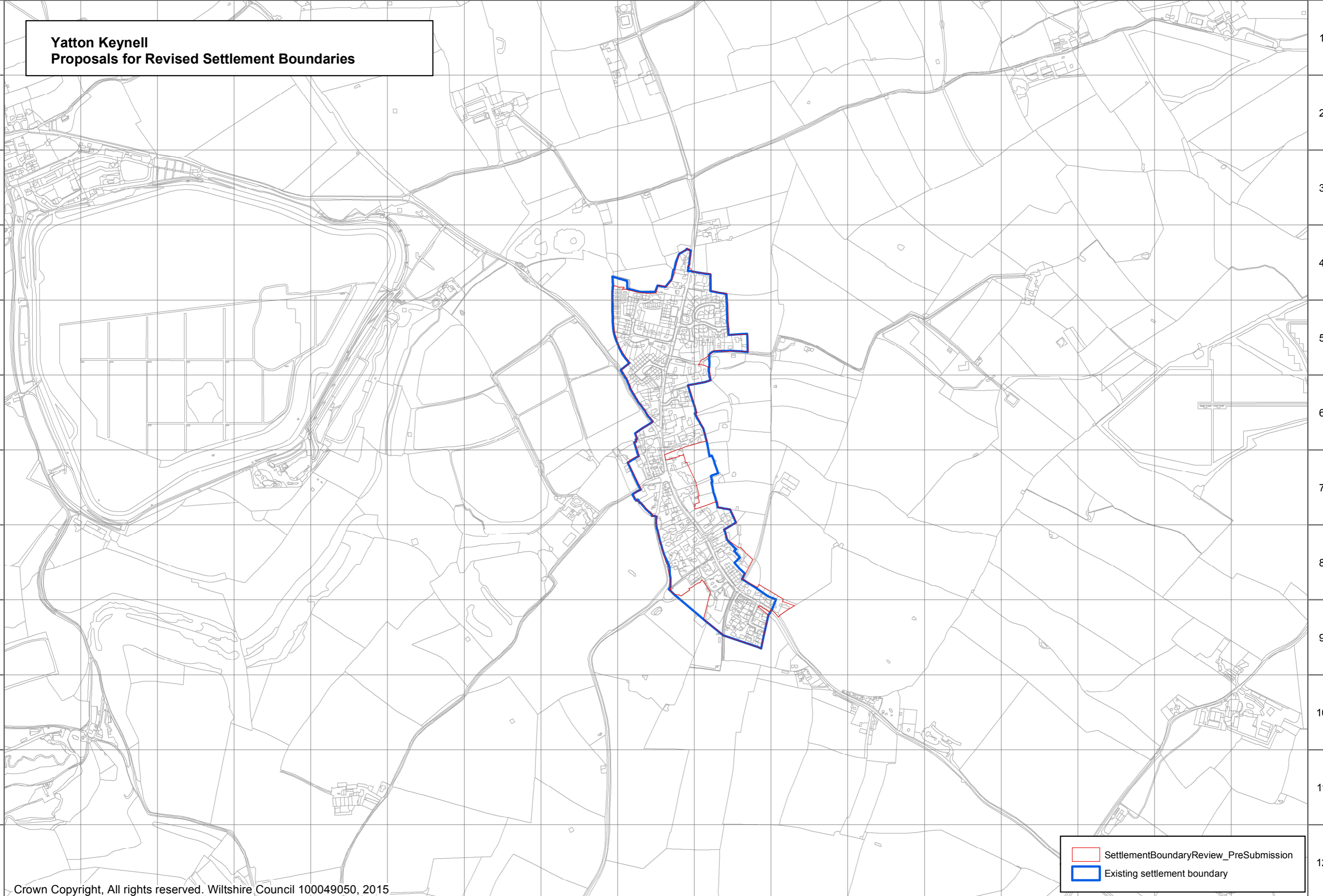
A B C D E F G H I J K L M N O P Q

A B C D E F G H I J K L M N O P Q

1
2
3
4
5
6
7
8
9
10
11
12

**Yatton Keynell
Proposals for Revised Settlement Boundaries**

1
2
3
4
5
6
7
8
9
10
11
12



SettlementBoundaryReview_PreSubmission
Existing settlement boundary

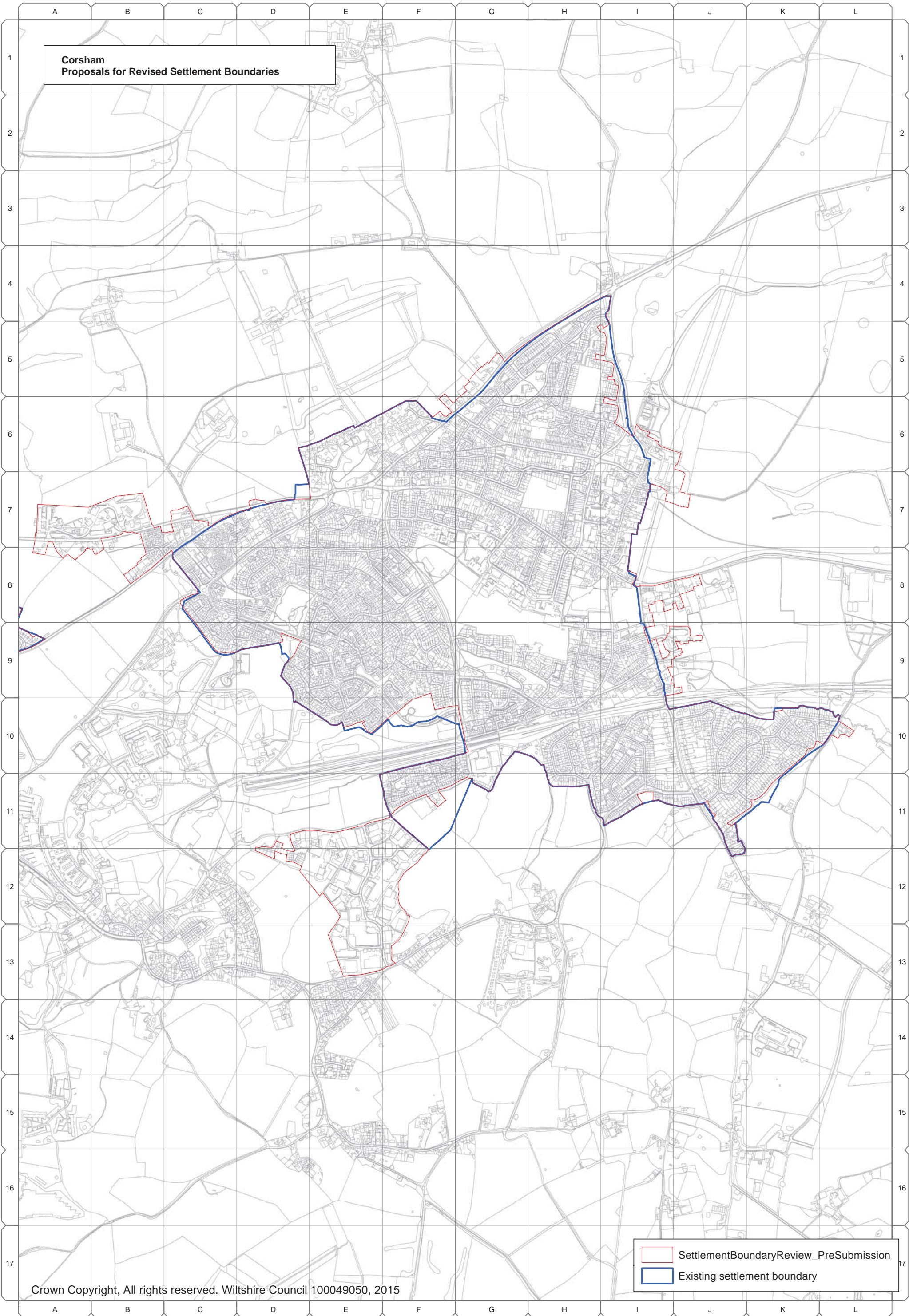
A B C D E F G H I J K L M N O P Q

Corsham Community Area

A.41 The following settlement boundaries in the Corsham Community Area have been reviewed by the Wiltshire Housing Site Allocations Plan:

- Corsham
- Box
- Colerne, and
- Rudloe

**Corsham
Proposals for Revised Settlement Boundaries**



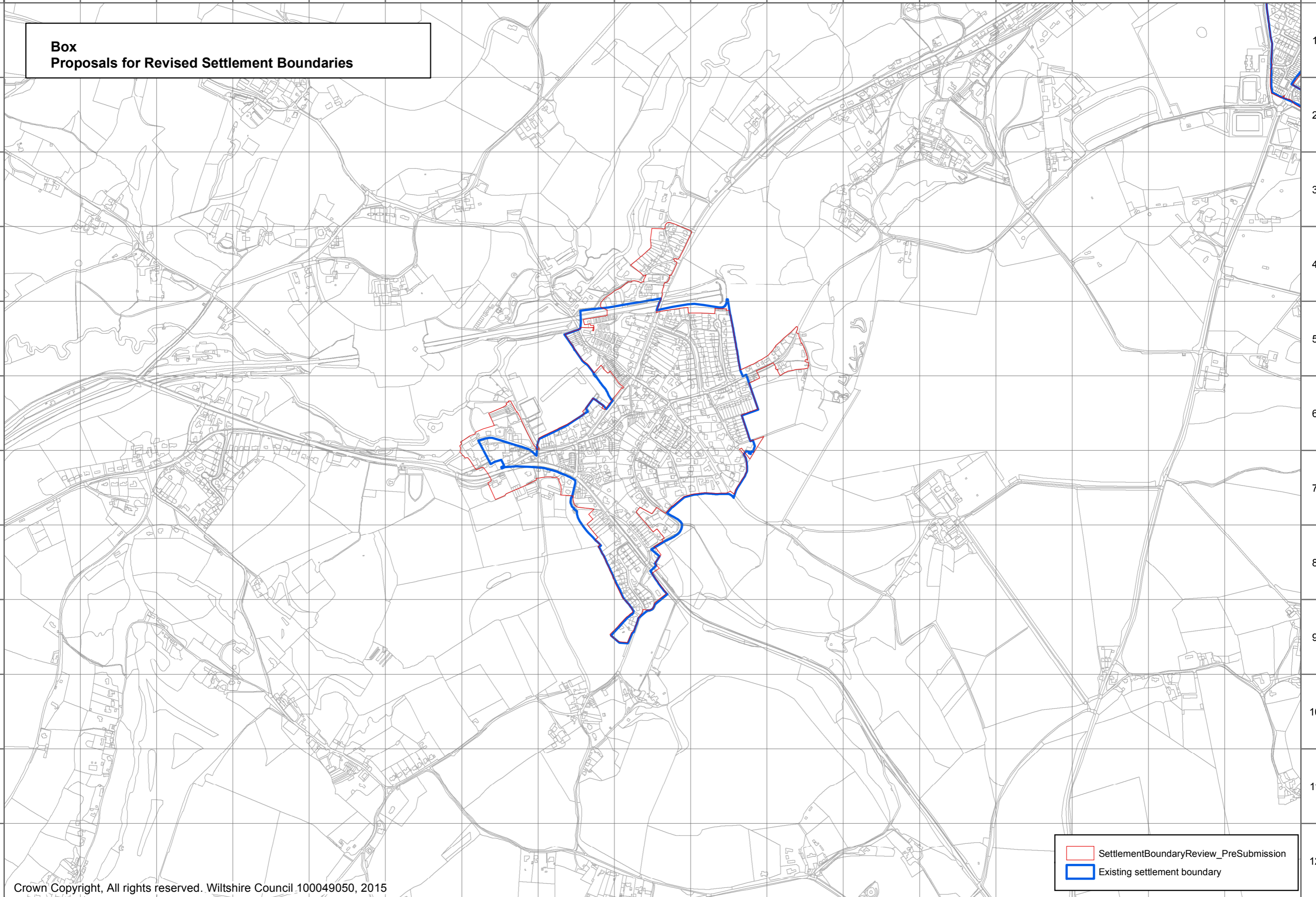
SettlementBoundaryReview_PreSubmission
Existing settlement boundary

A B C D E F G H I J K L M N O P Q

1
2
3
4
5
6
7
8
9
10
11
12

**Box
Proposals for Revised Settlement Boundaries**

1
2
3
4
5
6
7
8
9
10
11
12



SettlementBoundaryReview_PreSubmission
Existing settlement boundary

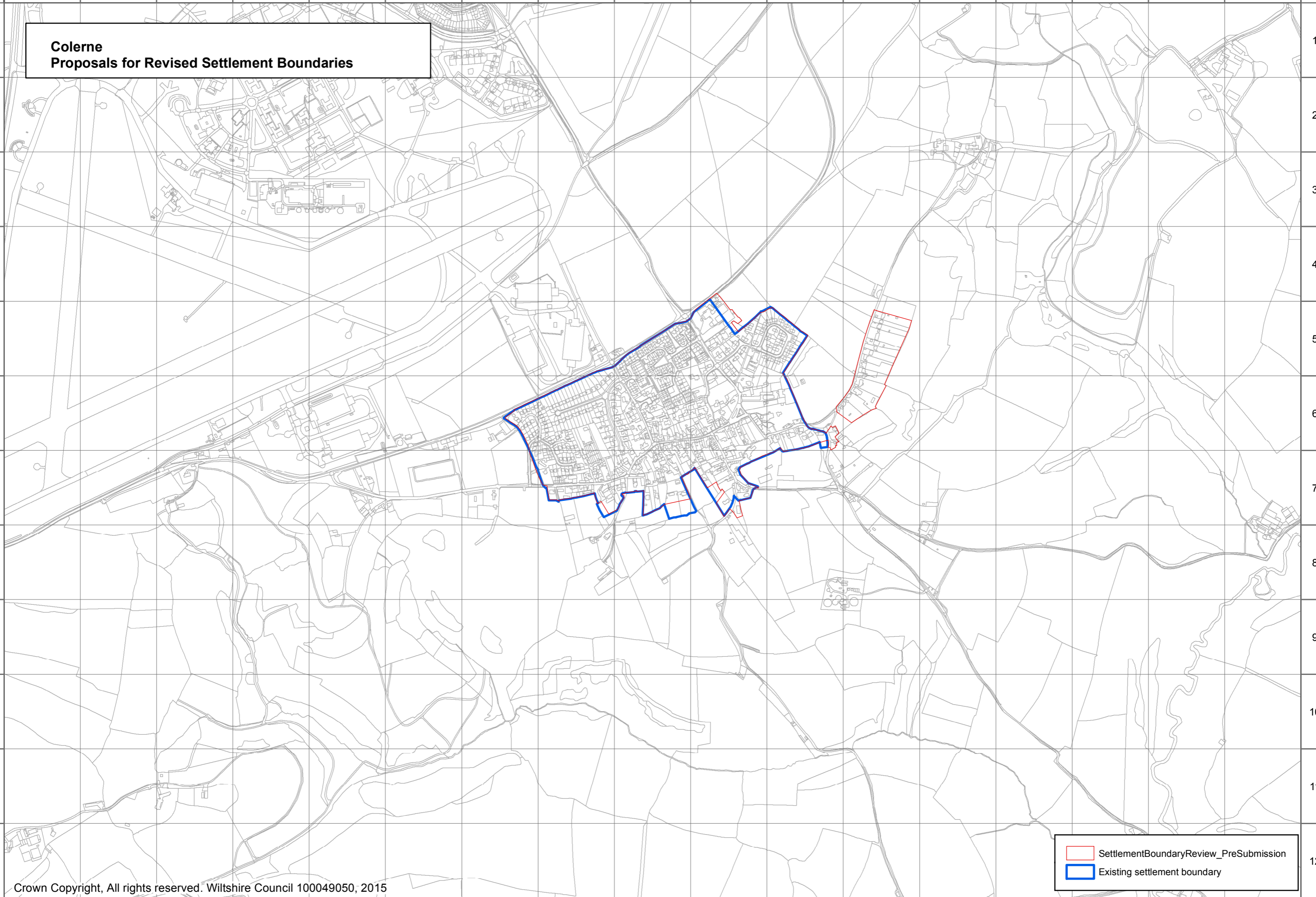
A B C D E F G H I J K L M N O P Q

A B C D E F G H I J K L M N O P Q

1
2
3
4
5
6
7
8
9
10
11
12

**Colerne
Proposals for Revised Settlement Boundaries**

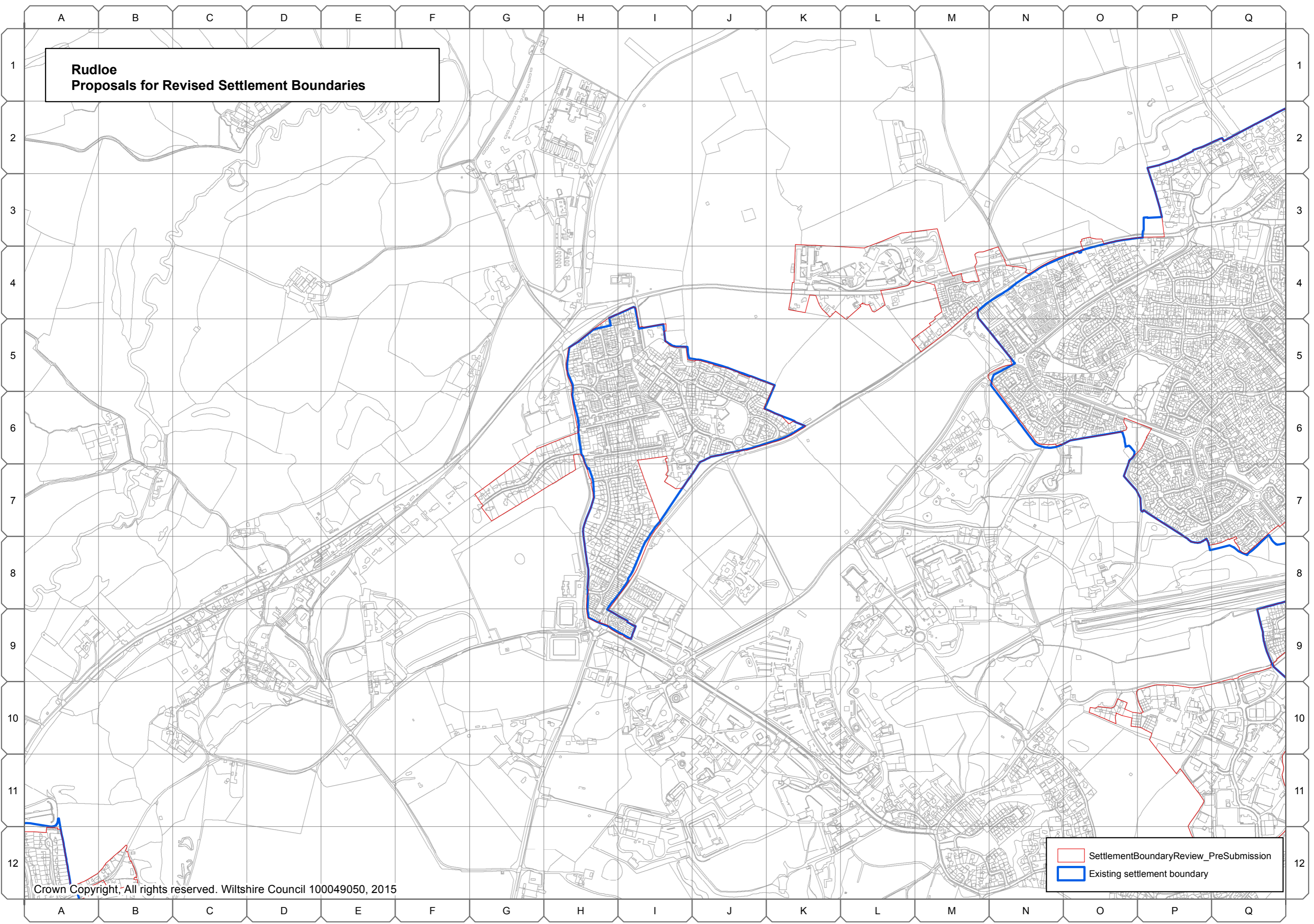
1
2
3
4
5
6
7
8
9
10
11
12





SettlementBoundaryReview_PreSubmission
Existing settlement boundary

A B C D E F G H I J K L M N O P Q

**Rudloe
Proposals for Revised Settlement Boundaries**



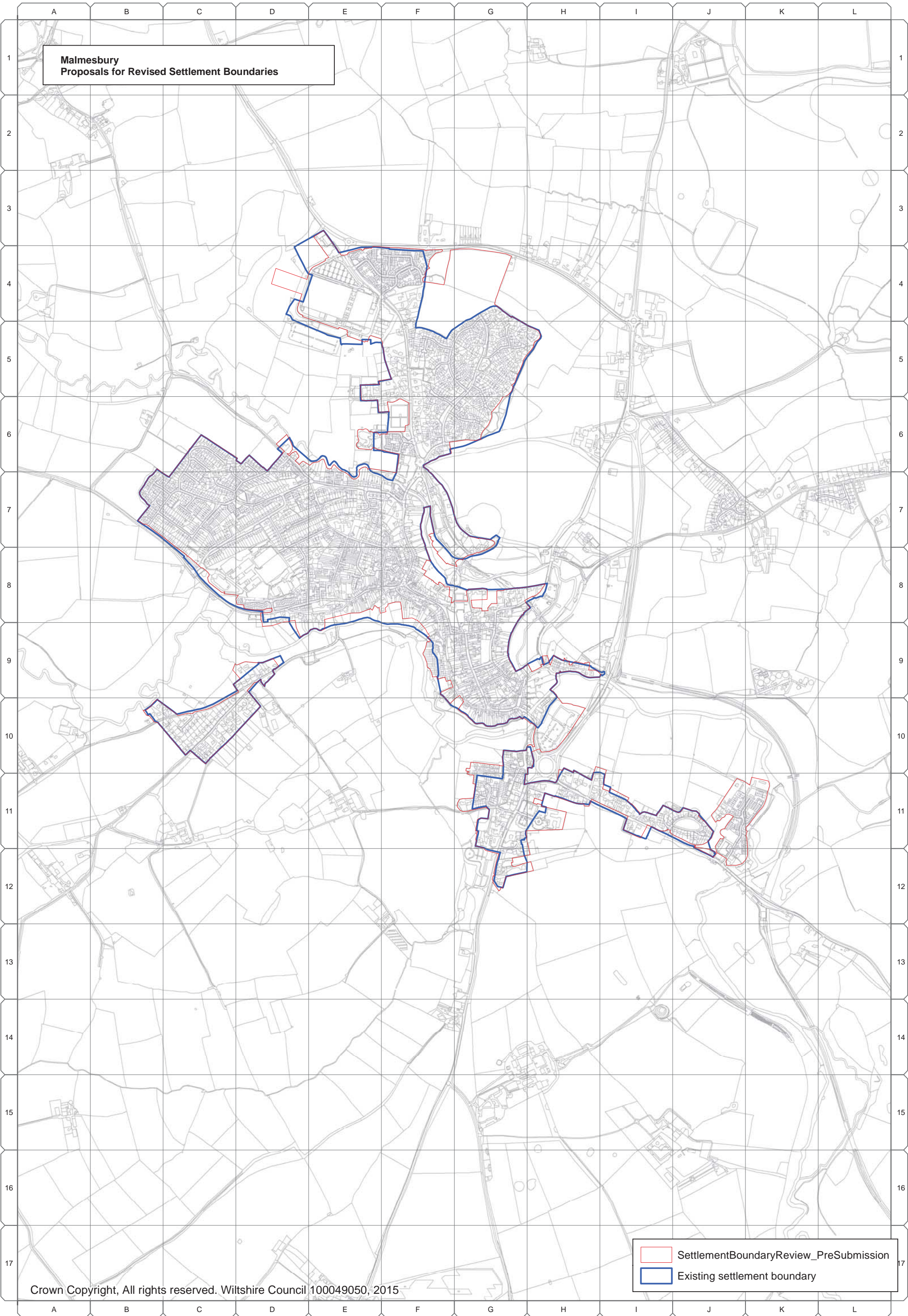
	SettlementBoundaryReview_PreSubmission
	Existing settlement boundary

Malmesbury Community Area

A.46 The following settlement boundaries in the Malmesbury Community Area have been reviewed by the Wiltshire Housing Site Allocations Plan:

- Malmesbury
- Ashton Keynes
- Crudwell
- Oaksey, and
- Sherston

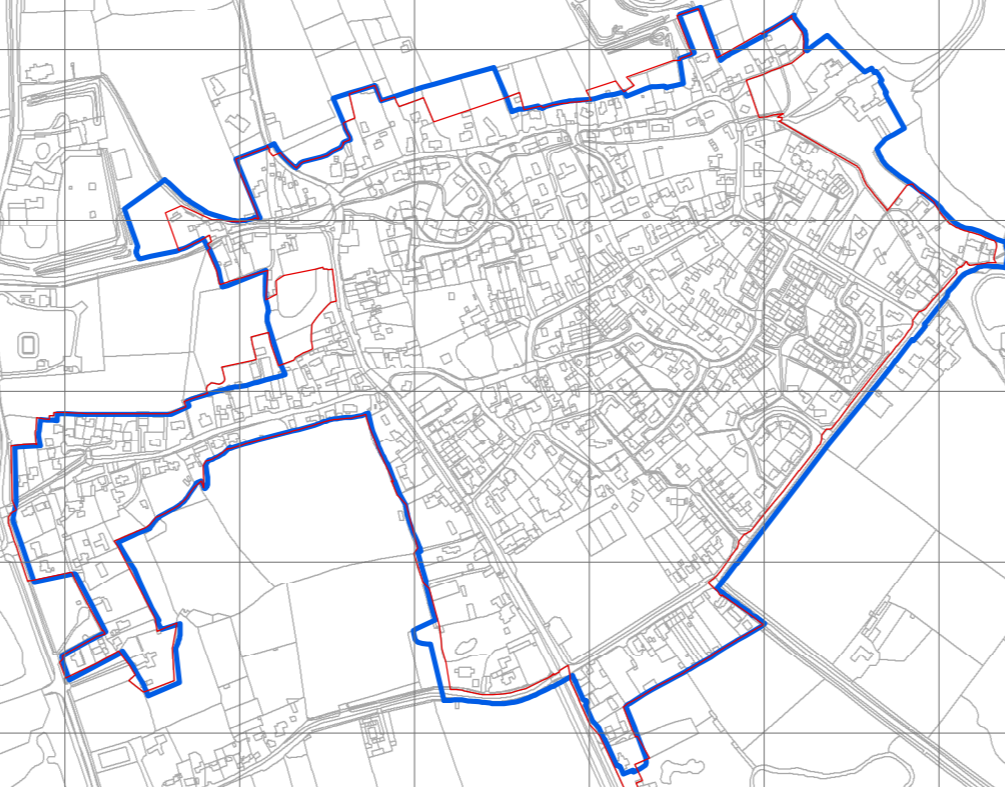
A.47 The settlement boundary for Great Somerford has not been reviewed because of a neighbourhood plan.



**Malmesbury
Proposals for Revised Settlement Boundaries**

- SettlementBoundaryReview_PreSubmission
- Existing settlement boundary

**Ashton Keynes
Proposals for Revised Settlement Boundaries**



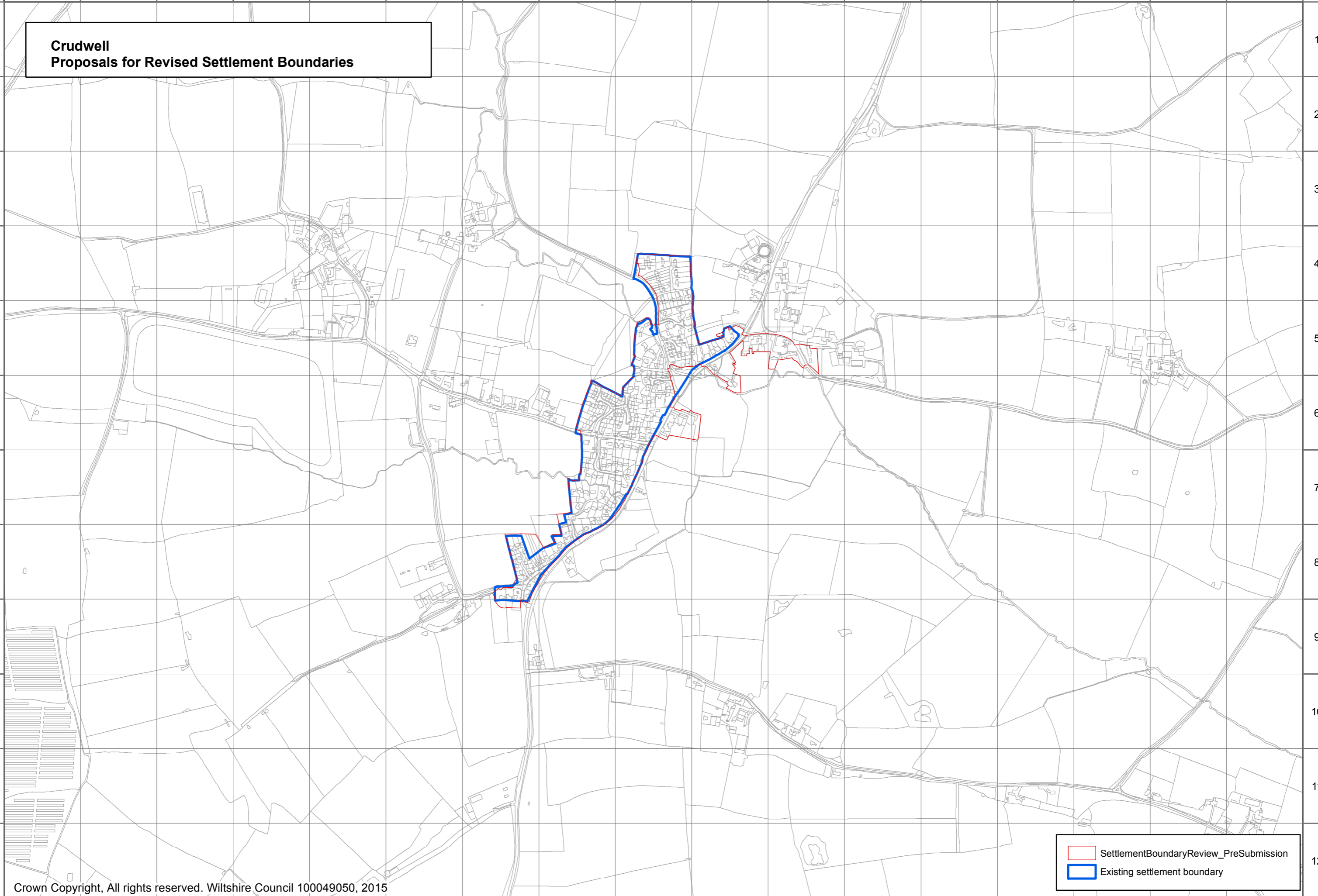
SettlementBoundaryReview_PreSubmission
Existing settlement boundary

A B C D E F G H I J K L M N O P Q

1
2
3
4
5
6
7
8
9
10
11
12

**Crudwell
Proposals for Revised Settlement Boundaries**

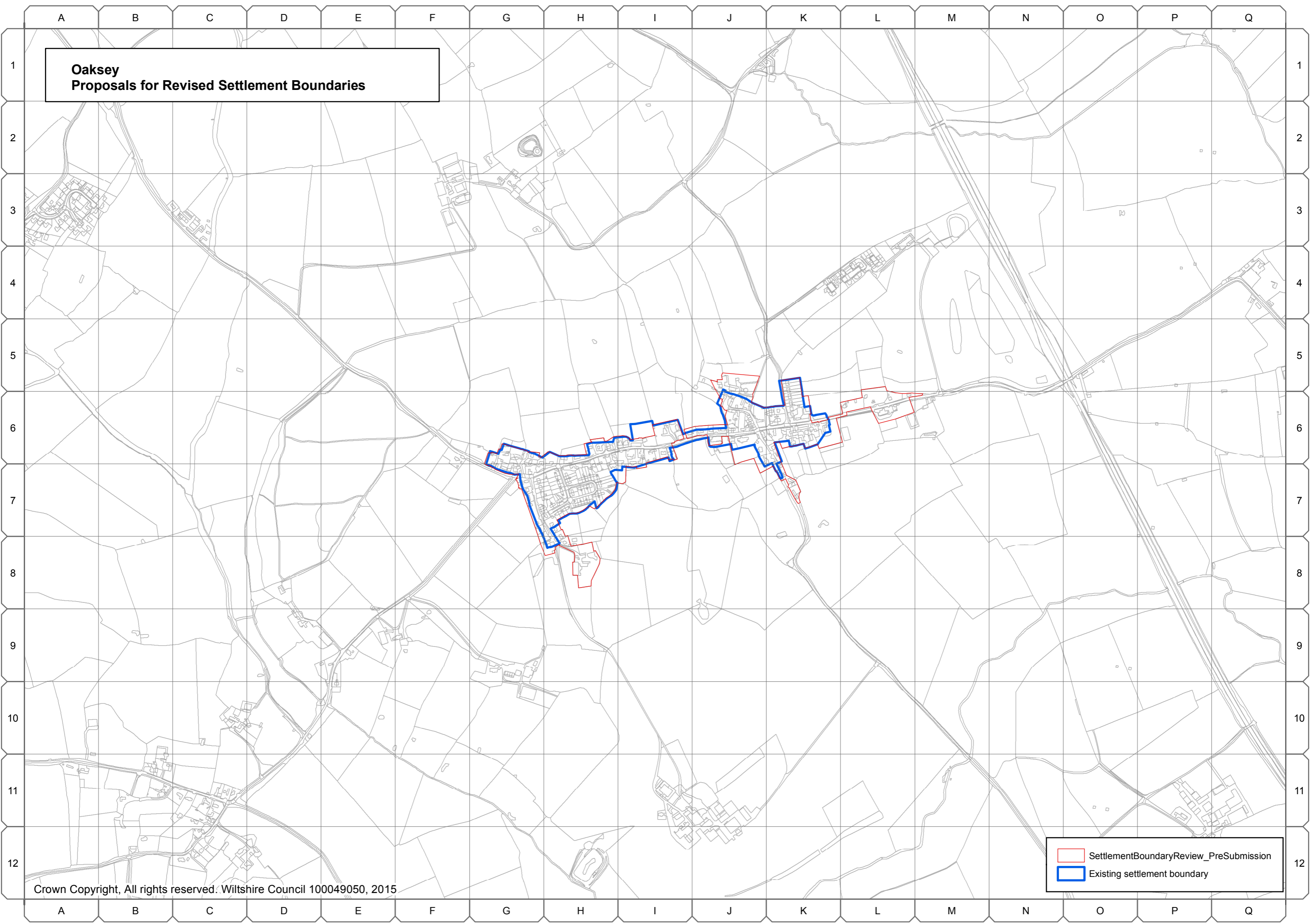
1
2
3
4
5
6
7
8
9
10
11
12



SettlementBoundaryReview_PreSubmission
Existing settlement boundary

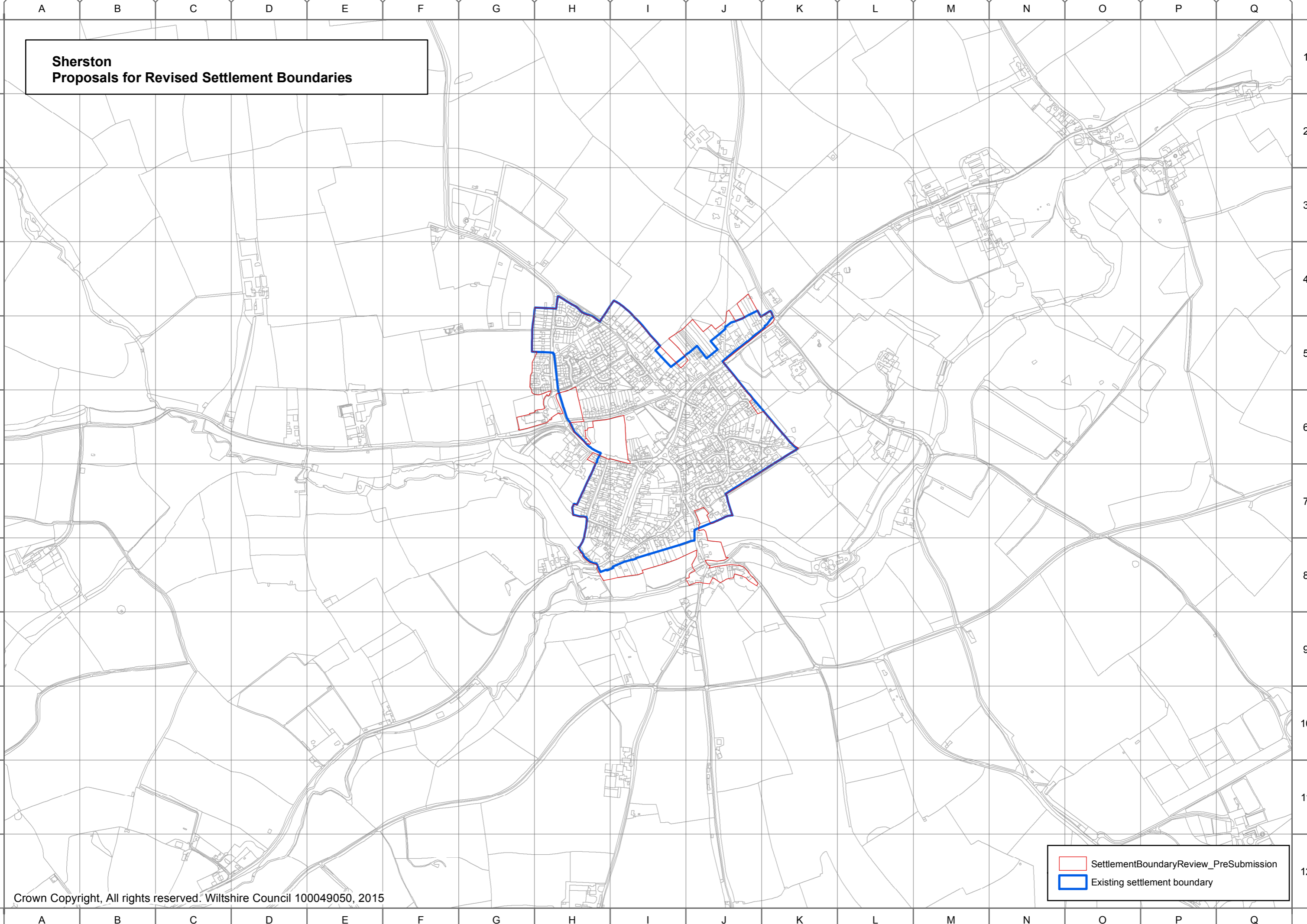
A B C D E F G H I J K L M N O P Q

**Oaksey
Proposals for Revised Settlement Boundaries**



SettlementBoundaryReview_PreSubmission
Existing settlement boundary

**Sherston
Proposals for Revised Settlement Boundaries**



SettlementBoundaryReview_PreSubmission
Existing settlement boundary