

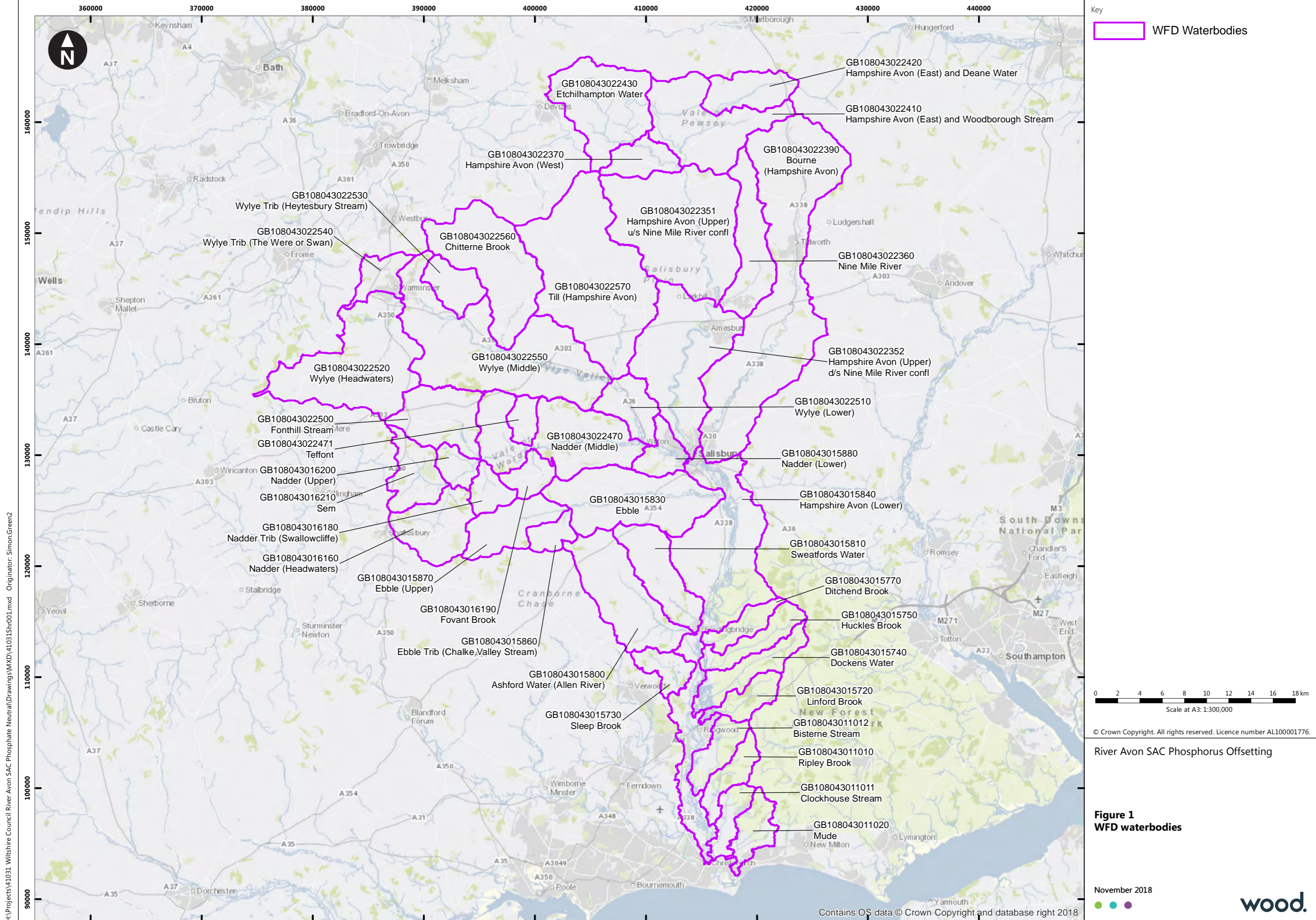
Appendix A

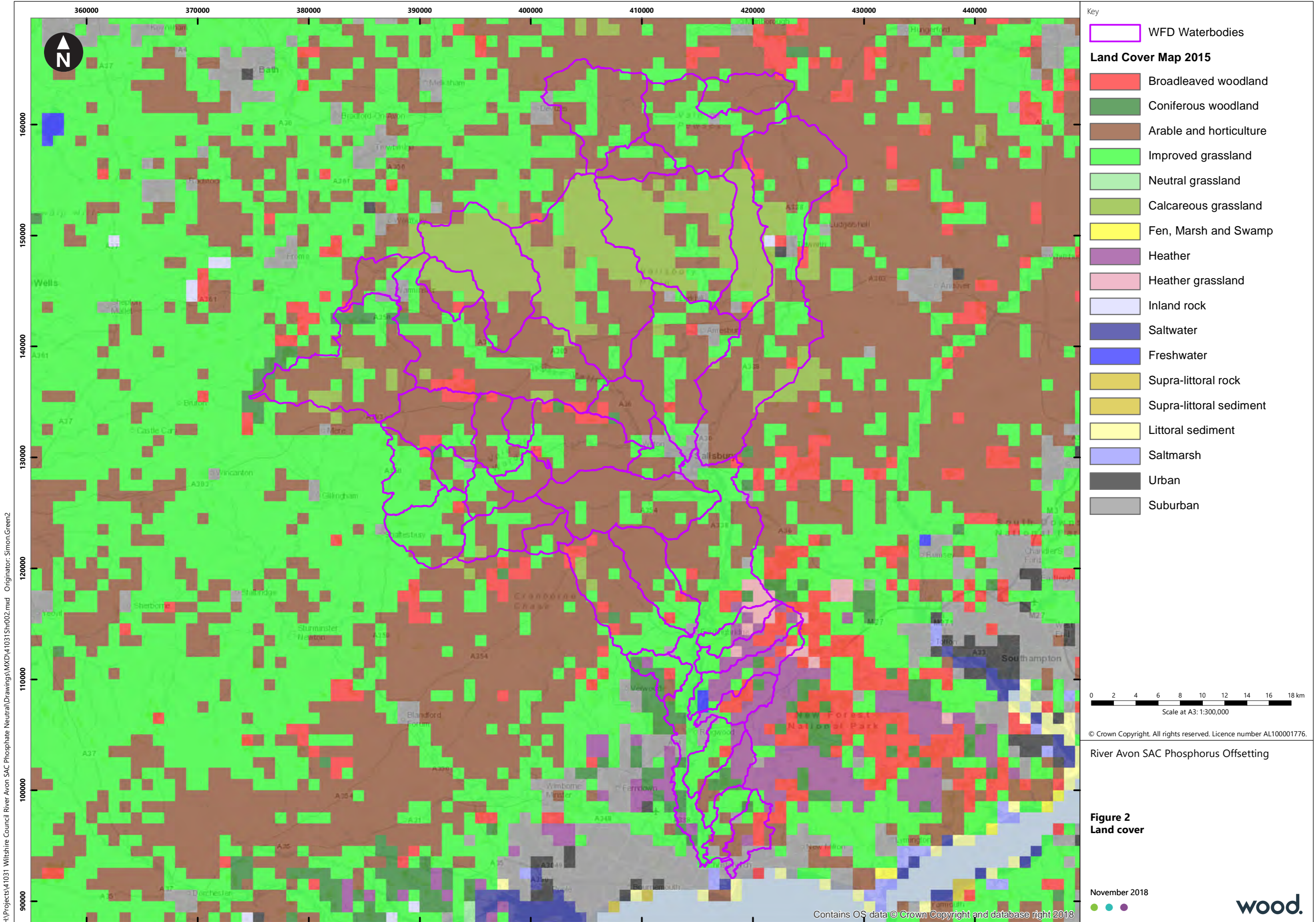
Maps and data sources

Table A1 provides a list of data sources used to produce maps of key spatial datasets for River Avon SAC catchment. The remainder of this appendix provides the maps and summary tables of the datasets.

Table A.1 Data sources

Figure	Content	Dataset	Data source
1	WFD waterbody boundaries		https://data.gov.uk/dataset/298258ee-c4a0-4505-a3b5-0e6585ecfdb2/wfd-river-waterbody-catchments-cycle-2
2	Land cover	CEH LCM 2015	https://www.ceh.ac.uk/services/land-cover-map-2015
3	Topsoil Olsen P	Countryside Survey	http://www.ukso.org/Cs/CS_Olsen_Phosphorus.html
4-9	Manure applications	MANURE-GIS	https://catalogue.ceh.ac.uk/documents/517717f7-d044-42cf-a332-a257e0e80b5c
10	Soil erosion by water	European soil data centre	https://esdac.jrc.ec.europa.eu/resource-type/soil-data-maps
11	Population density	Office for National Statistics 2011 Population census	https://www.ons.gov.uk/census/2011census
12	Crop data	Crop map of England (CROME)	https://data.gov.uk/dataset/7b006b98-fc37-4f43-945c-40eec70de031/crop-map-of-england-crome-2017-south-west
13-16	Farm numbers	Agricultural census data at WFD waterbody scale	ADAS Farmscoper 4: http://www.adas.uk/Service/farmscoper
18-37	Source apportionment of phosphorus loads to watercourses	SEPARATE	https://catalogue.ceh.ac.uk/documents/a26e2127-8a20-49a4-8f57-d5e78cd55231
38-39	Solid and superficial geology	British Geological Survey 625k geology mapping	https://www.bgs.ac.uk/products/digitalmaps/DiGMapGB_625.html





- Key
- WFD Waterbodies
- Land Cover Map 2015**
- Broadleaved woodland
 - Coniferous woodland
 - Arable and horticulture
 - Improved grassland
 - Neutral grassland
 - Calcareous grassland
 - Fen, Marsh and Swamp
 - Heather
 - Heather grassland
 - Inland rock
 - Saltwater
 - Freshwater
 - Supra-littoral rock
 - Supra-littoral sediment
 - Littoral sediment
 - Saltmarsh
 - Urban
 - Suburban

0 2 4 6 8 10 12 14 16 18 km
Scale at A3: 1:300,000

© Crown Copyright. All rights reserved. Licence number AL100001776.

River Avon SAC Phosphorus Offsetting

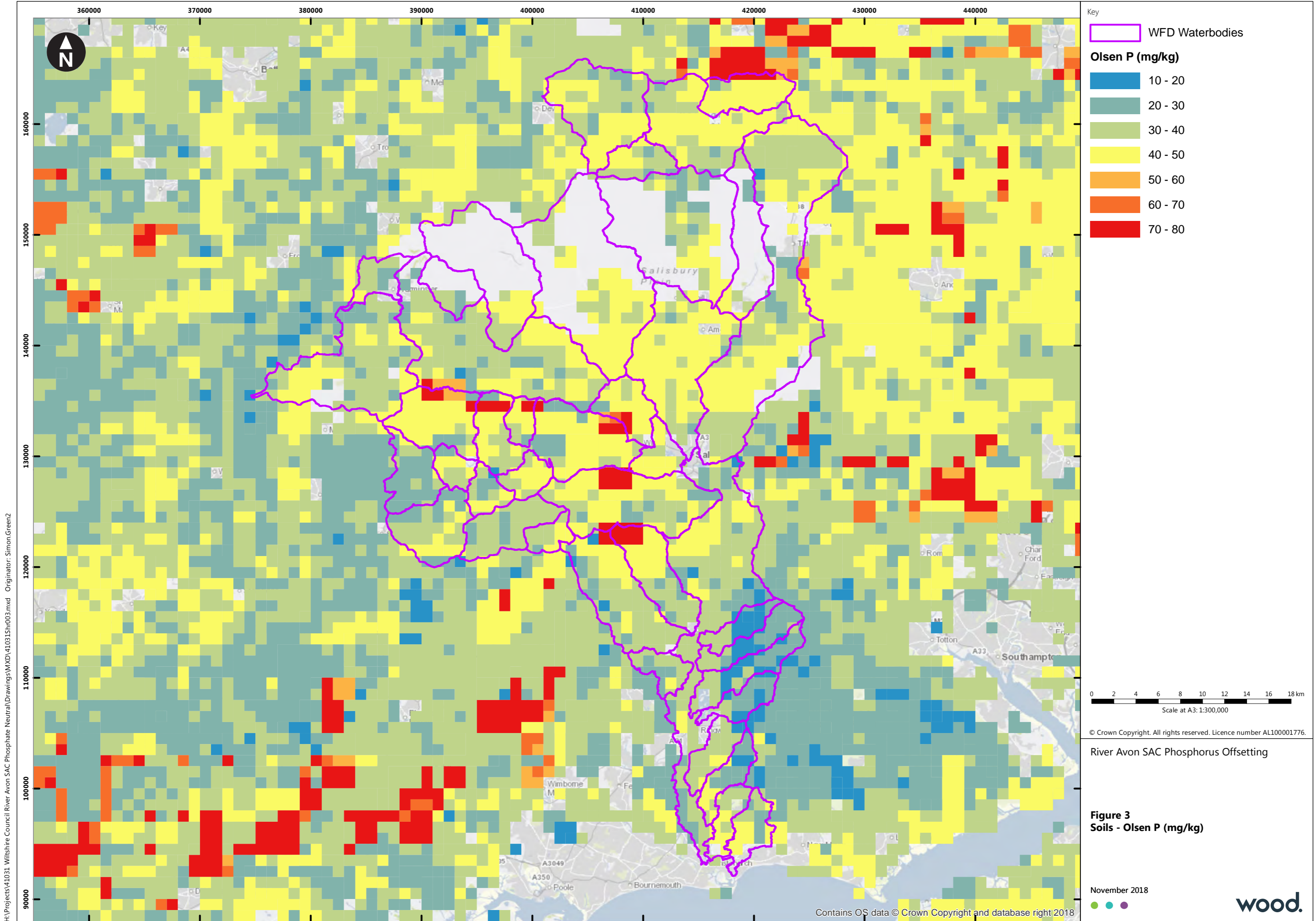
Figure 2
Land cover

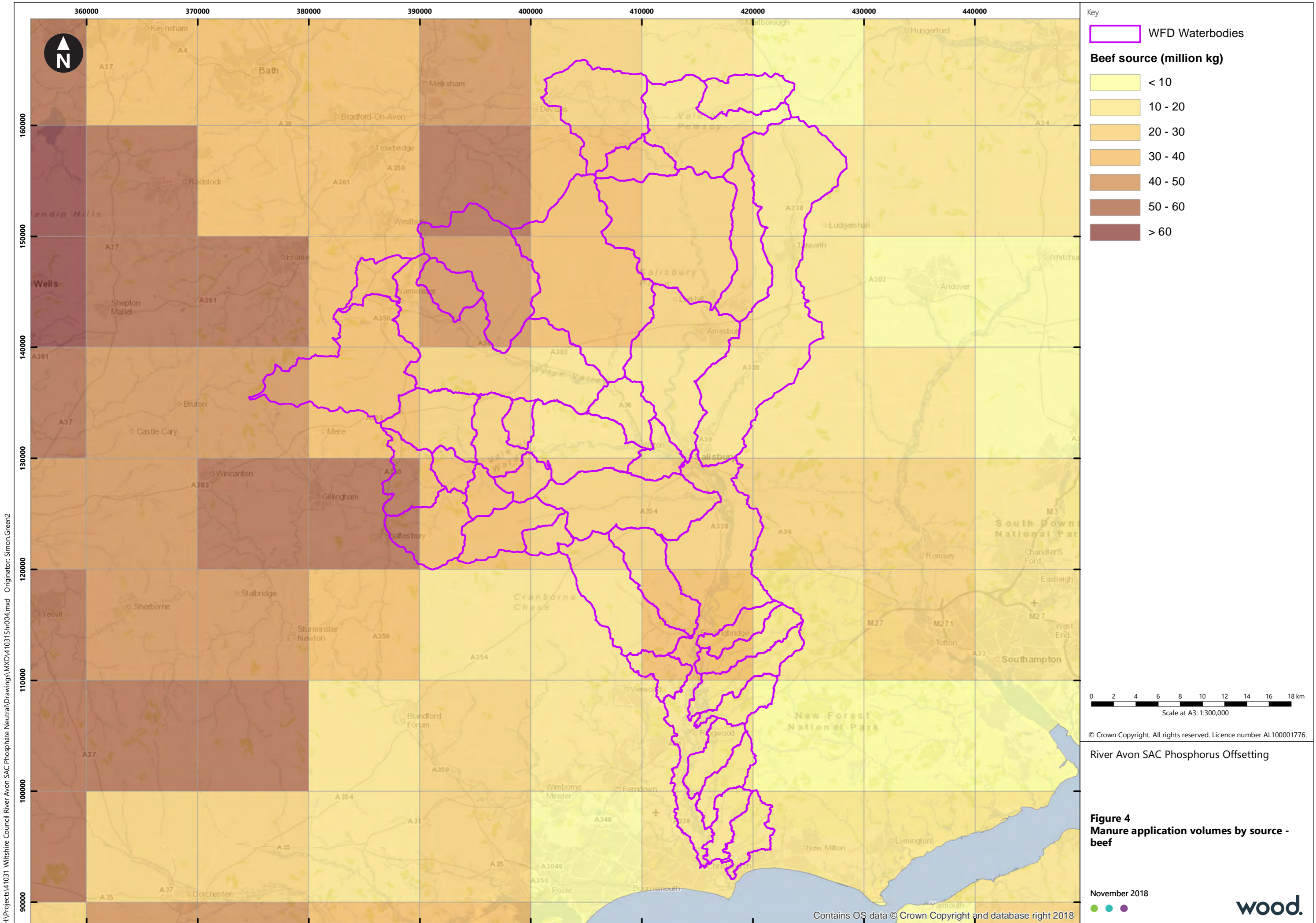
November 2018

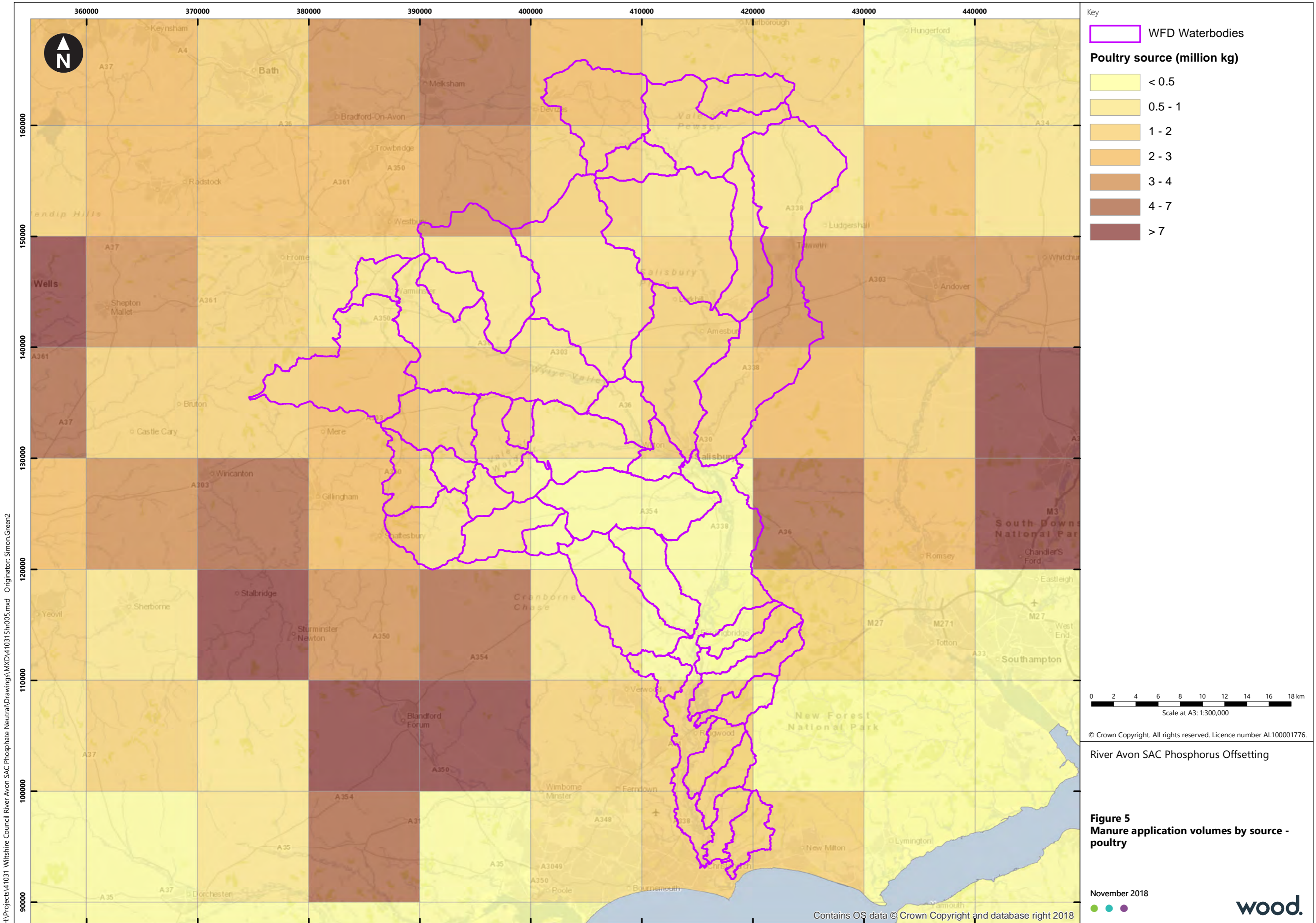


H:\Projects\41031 - Wiltshire Council River Avon SAC Phosphate Neutral\Drawings\MXD\41031Shr002.mxd Originator: Simon.Green2

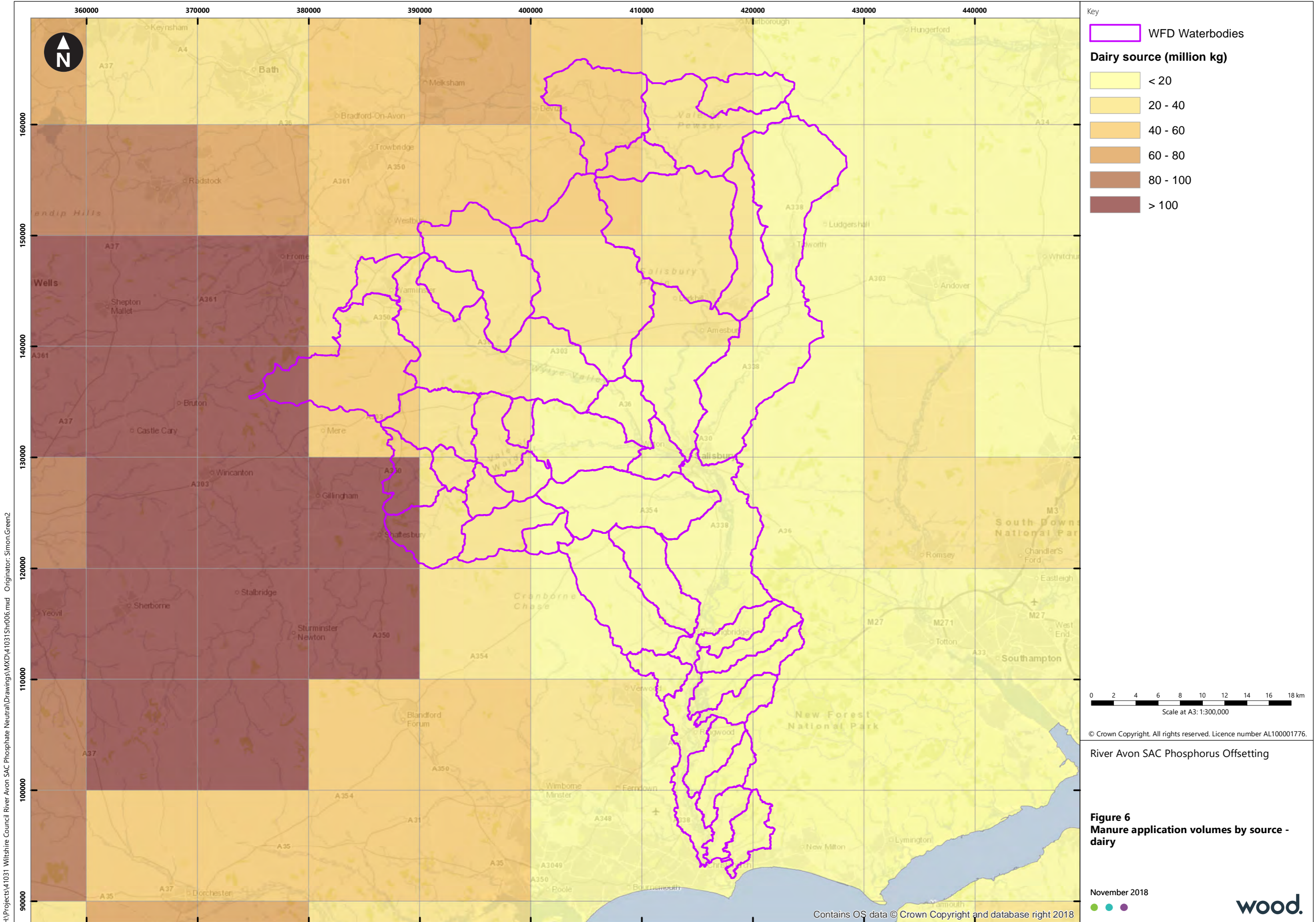
Contains OS data © Crown Copyright and database right 2018

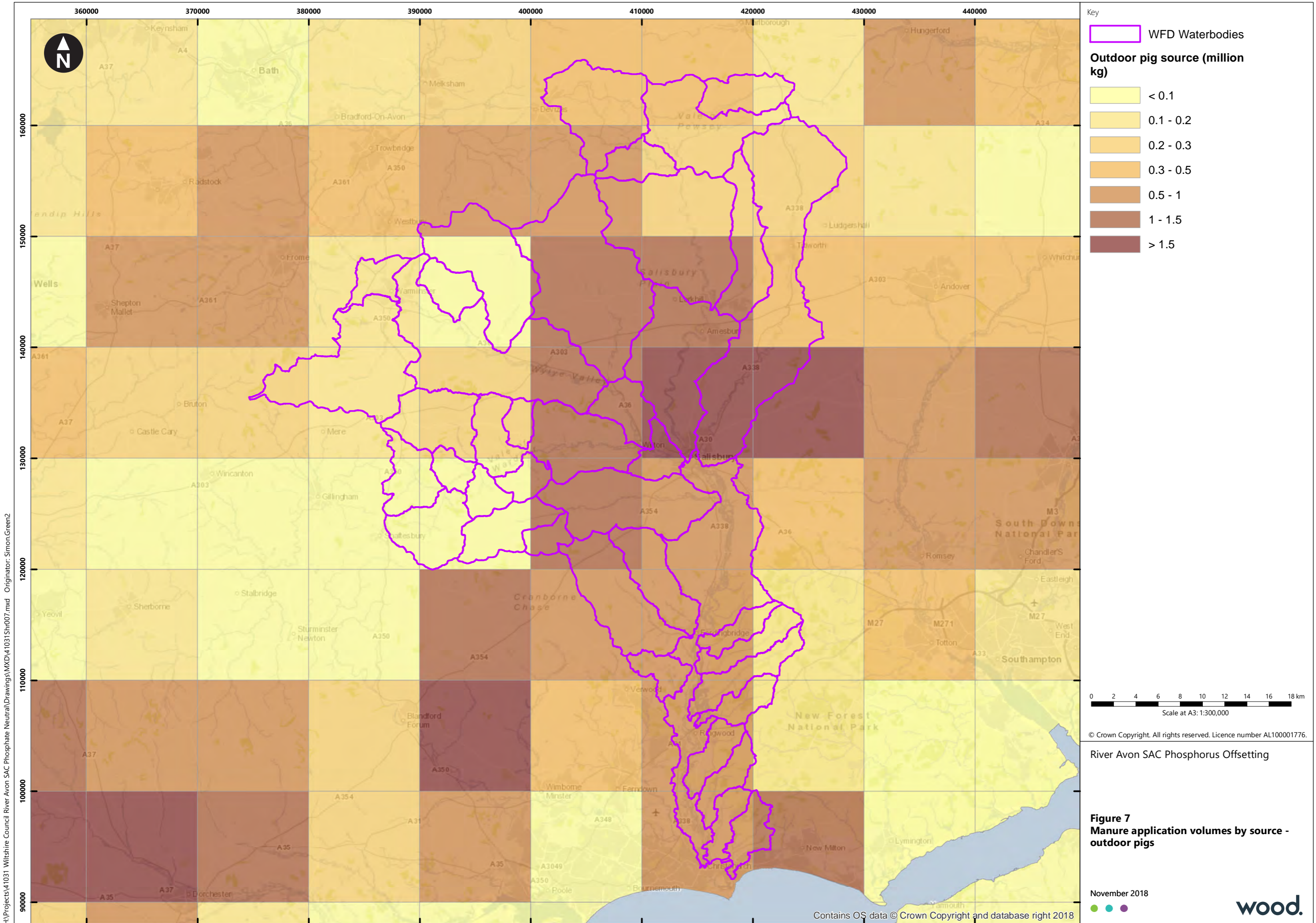






H:\Projects\41031 - Wiltshire Council River Avon SAC Phosphate Neutral\Drawings\MXD\41031Shr005.mxd Originator: Simon.Green2





H:\Projects\41031_Wiltshire Council River Avon SAC Phosphate Neutral\Drawings\MXD\41031_Shr007.mxd Originator: Simon.Green2

Key

WFD Waterbodies

Outdoor pig source (million kg)

- <math>< 0.1</math>
- 0.1 - 0.2
- 0.2 - 0.3
- 0.3 - 0.5
- 0.5 - 1
- 1 - 1.5
- > 1.5

0 2 4 6 8 10 12 14 16 18 km
Scale at A3: 1:300,000

© Crown Copyright. All rights reserved. Licence number AL100001776.

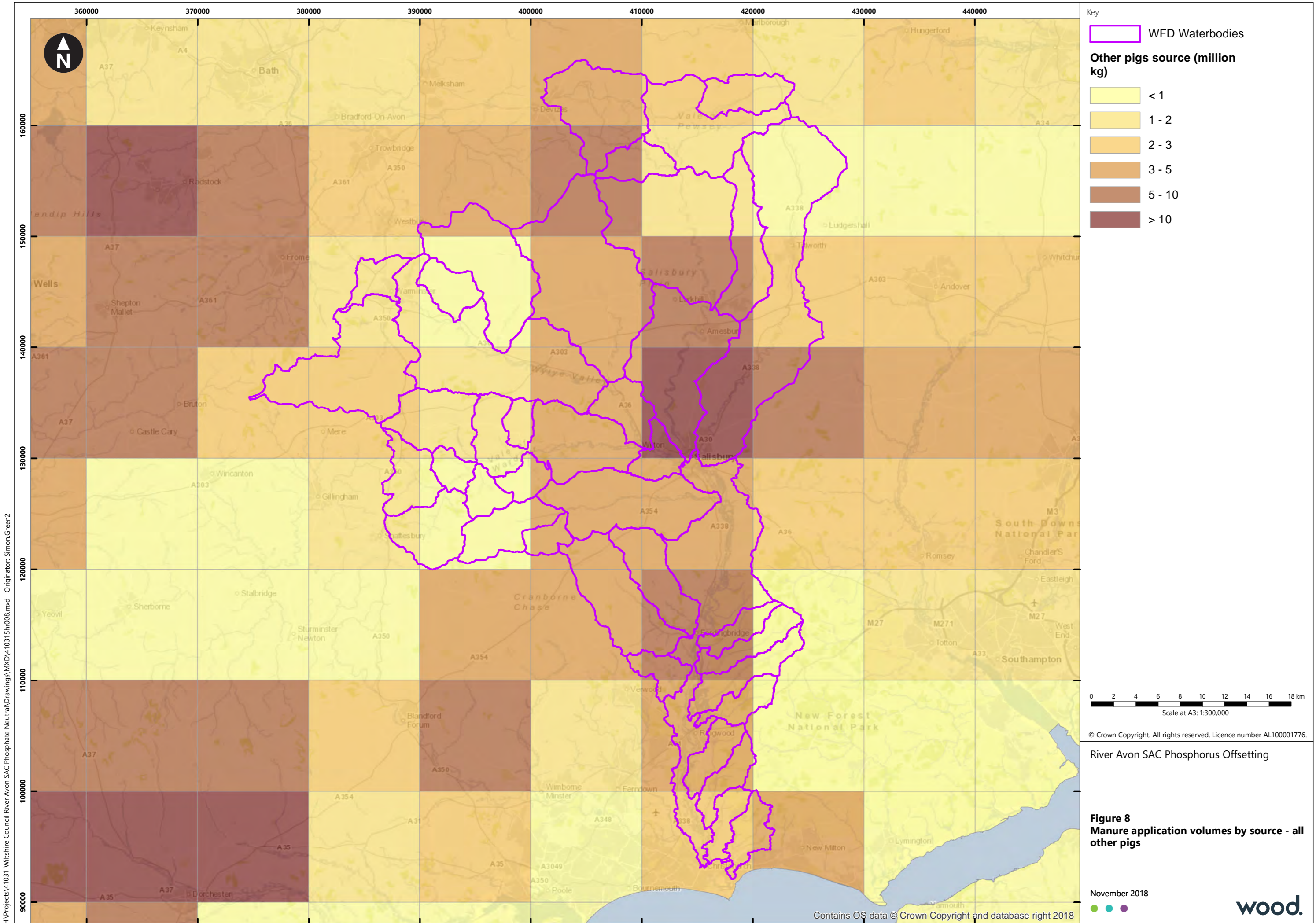
River Avon SAC Phosphorus Offsetting

Figure 7
Manure application volumes by source - outdoor pigs

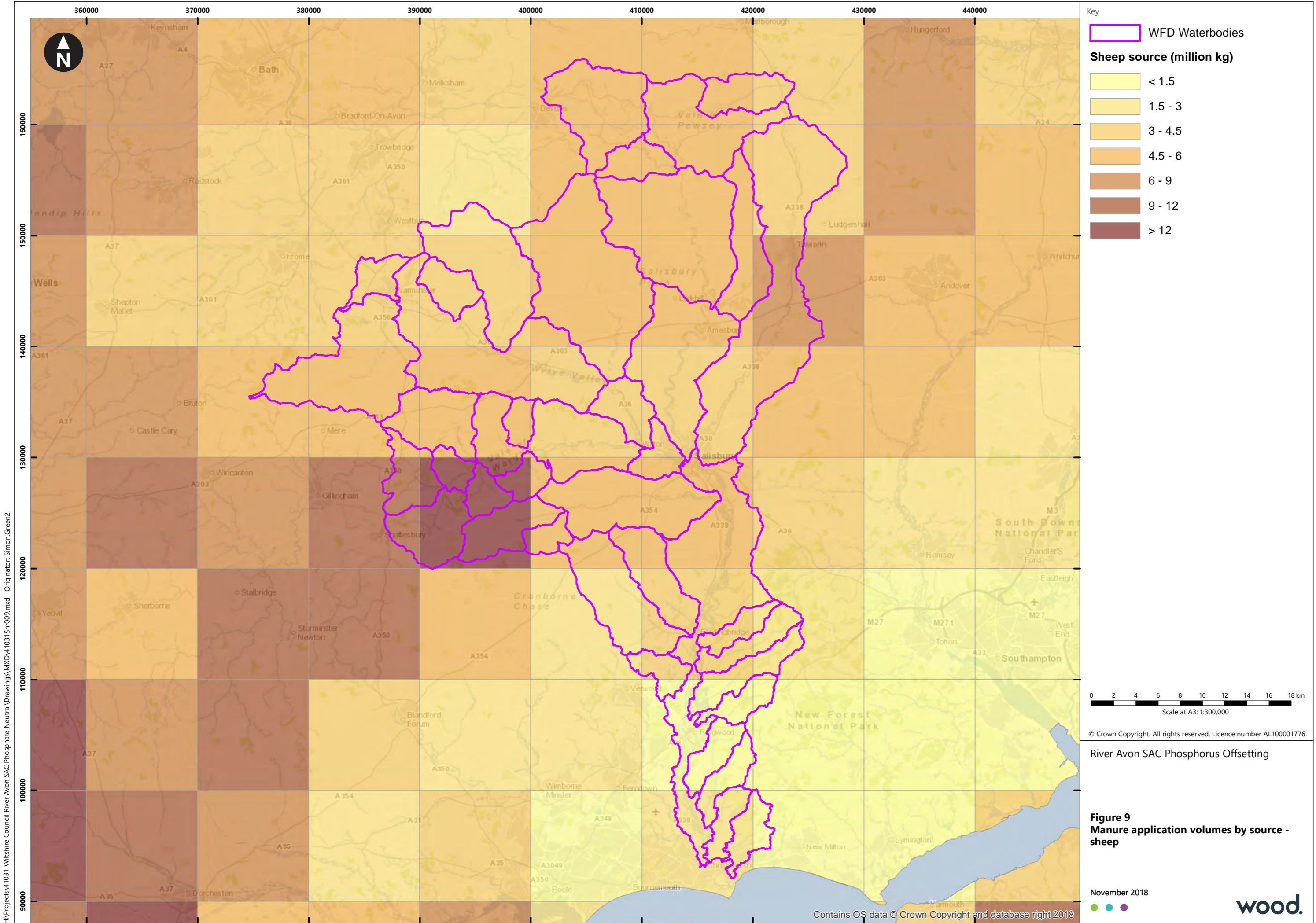
November 2018

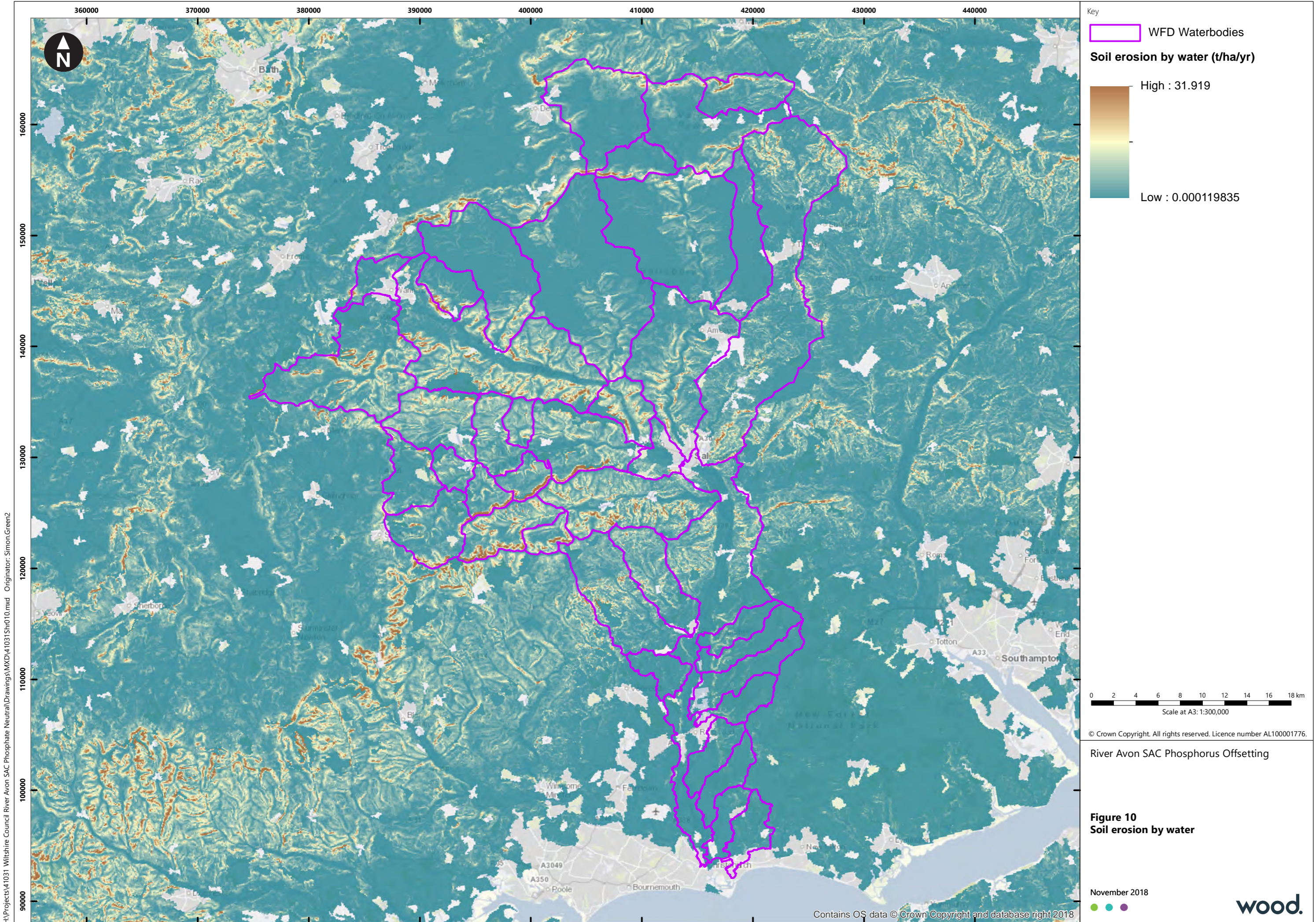


Contains OS data © Crown Copyright and database right 2018

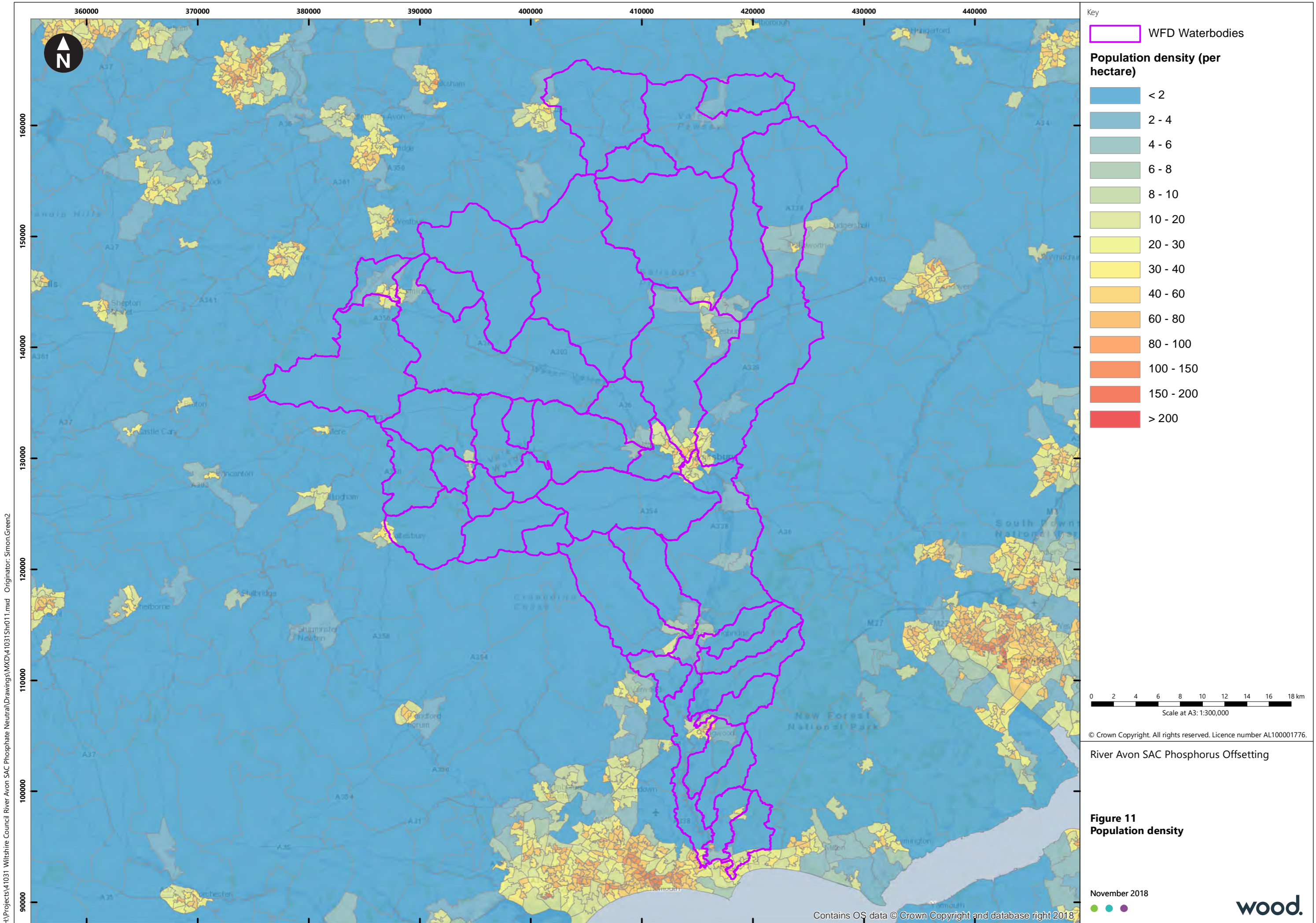


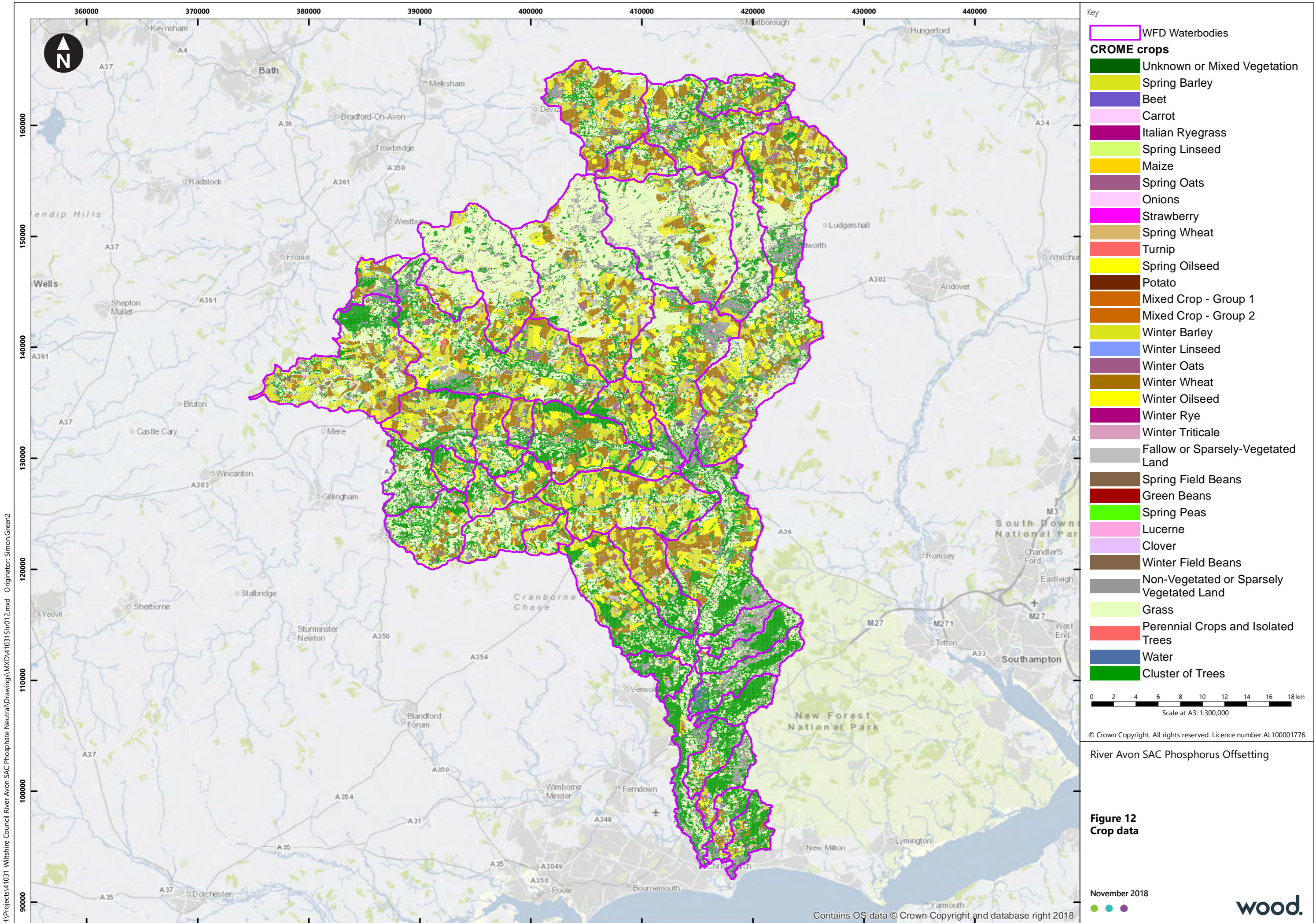
H:\Projects\41031 - Wiltshire Council River Avon SAC Phosphate Neutral\Drawings\MXD\41031Shr08.mxd Originator: Simon.Green2

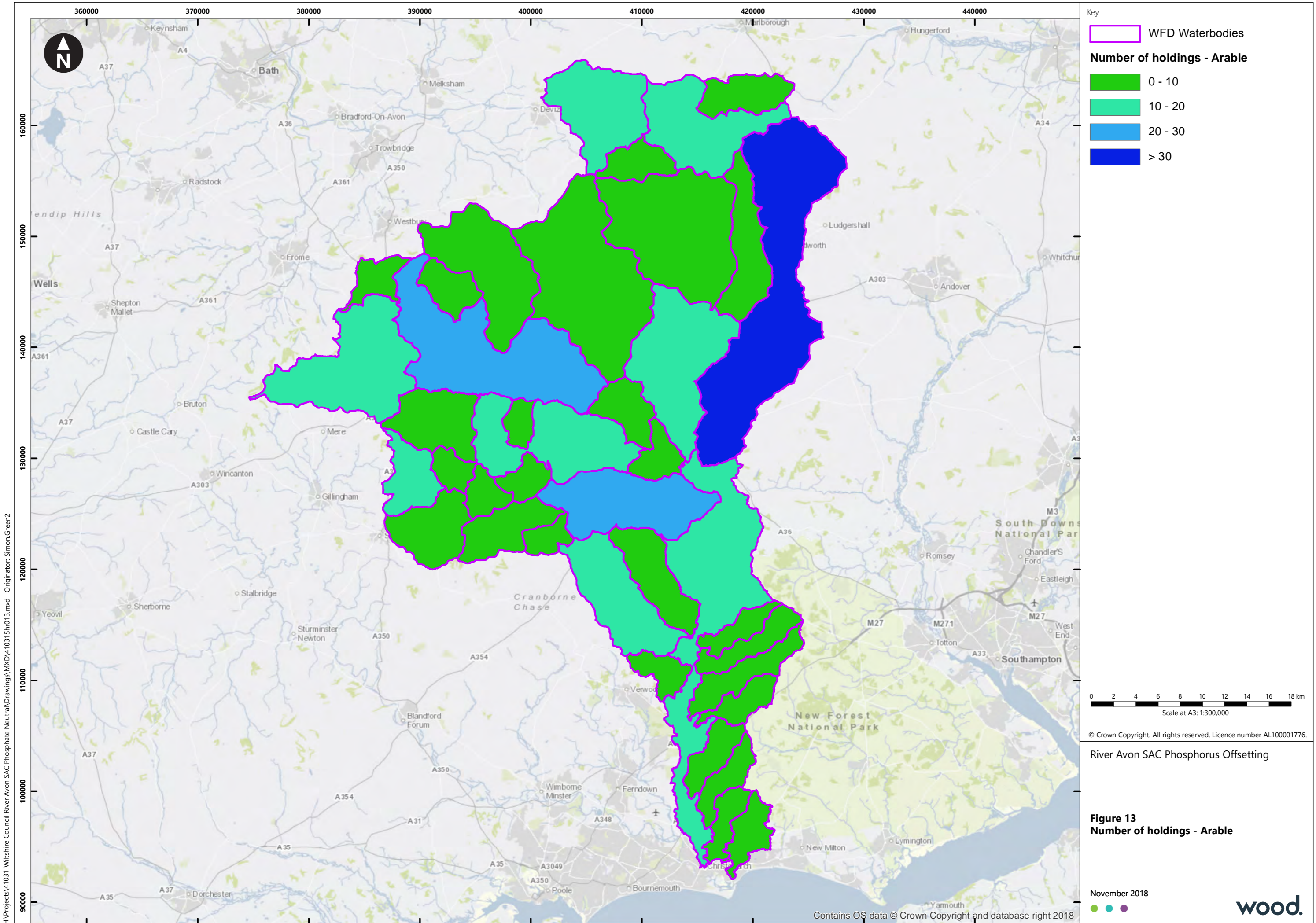




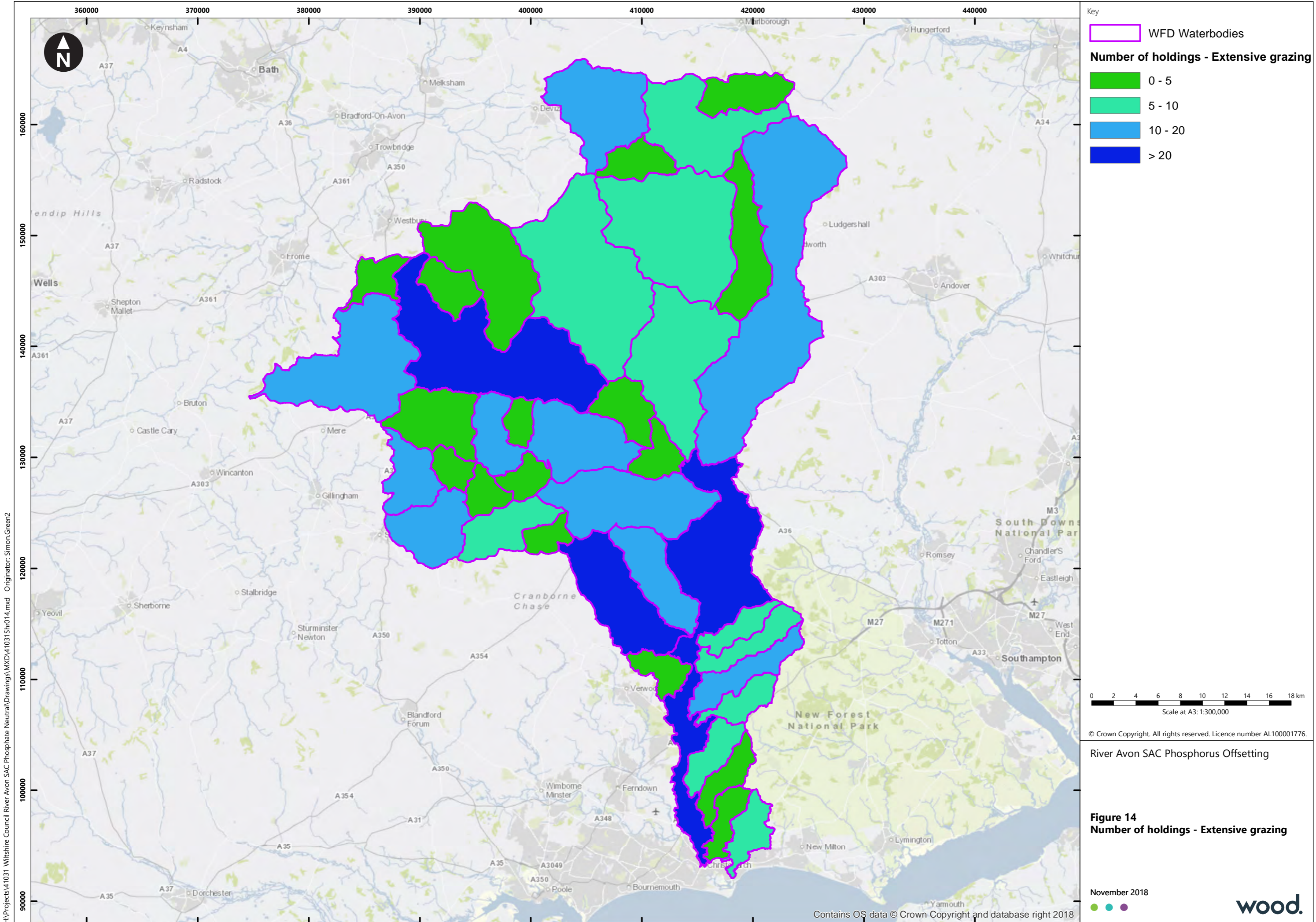
H:\Projects\41031 - Wiltshire Council River Avon SAC Phosphate Neutral\Drawings\MXD\41031_Shr010.mxd Originator: Simon.Green2



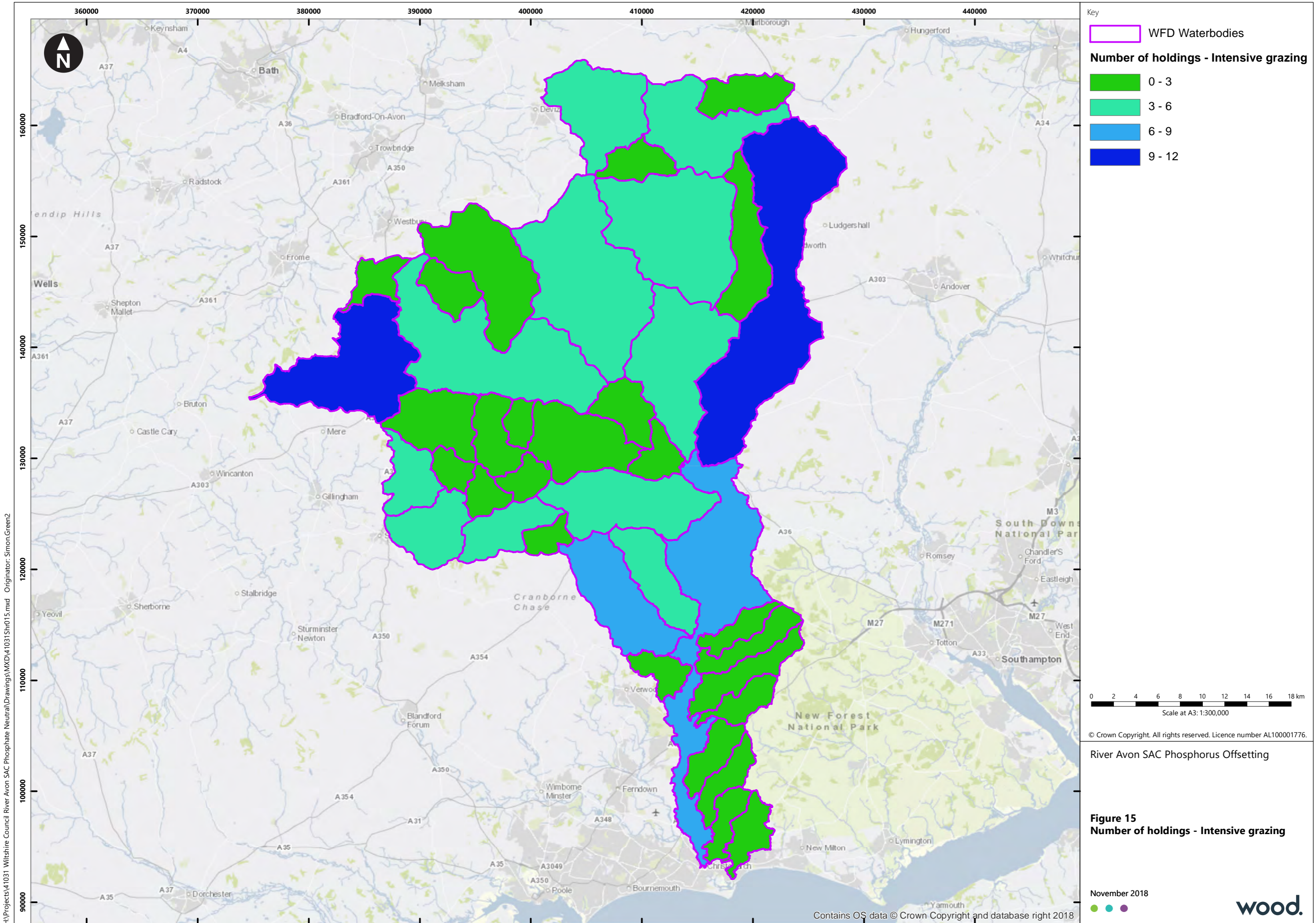




H:\Projects\41031 - Wiltshire Council River Avon SAC Phosphate Neutral\Drawings\MXD\41031_Shr013.mxd Originator: Simon.Green2



H:\Projects\41031 - Wiltshire Council River Avon SAC Phosphate Neutral\Drawings\MXD\41031_Shr014.mxd Originator: Simon.Green2



H:\Projects\41031 - Wiltshire Council River Avon SAC Phosphate Neutral\Drawings\MXD\41031_Shr015.mxd Originator: Simon.Green2