

Session Name

New Session 01-05-2019 22-04

Date Created

5/1/2019 6:45:41 PM

**Active
Participants**

45

**Total
Participants**

45

Average Score

0.00%

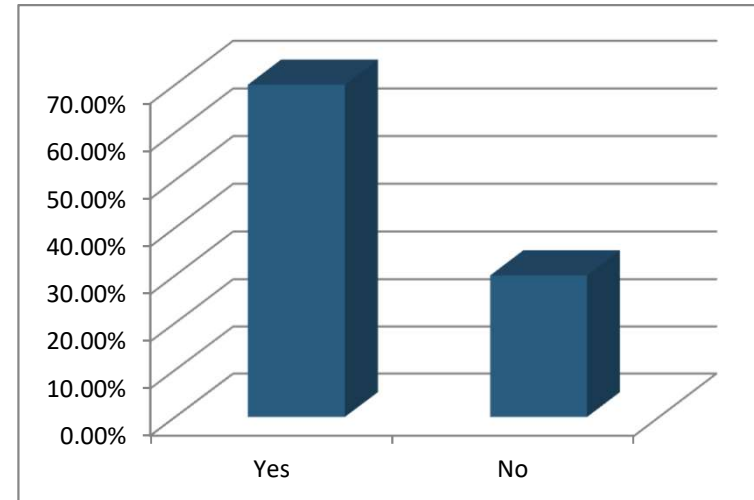
Questions

4

Results by Question

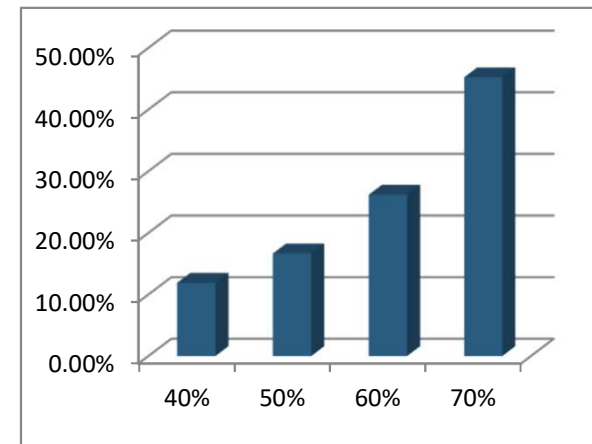
amount of our youth budget which we have always allocated to our usual providers of youth activities. Holding back some money

Responses		
	Percent	Count
Yes	70.00%	28
No	30.00%	12
Totals	100%	40



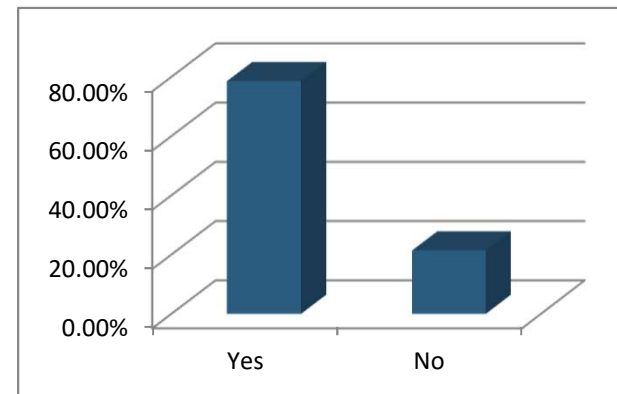
2. If we were to adopt this approach what percentage of our youth budget should still be allocated to our usual portfolio of activity providers (which have always been well received and appreciated by our young people). (Multiple Choice)

Responses		
	Percent	Count
40%	11.90%	5
50%	16.67%	7
60%	26.19%	11
70%	45.24%	19
Totals	100%	42



3. Boomsatsuma is our provider of arts activities. Karen's research at the youth clubs suggest these activities are the least valued of all our providers. Nevertheless, retaining them in our contractor list would provide a greater 'spread' of activities. Should Boomsatsuma be retained again or should the small budget allocated to them be redistributed to the more 'physical' activities? (Multiple Choice)

Responses		
	Percent	Count
Yes	78.57%	11
No	21.43%	3
Totals	100%	14



4. When approached by a youth club or youth-related sports or similar group it is the usual practice of the Board to expect a contribution from the Parish Council. Do you agree with this practice? (Multiple Choice)

Responses		
	Percent	Count
Yes	93.02%	40
No	6.98%	3
Totals	100%	43

