

Strategic Planning Committee

27 January 2021

6a) 20/01938/OUT Land at Semington Road, Melksham, Wiltshire

Outline planning permission for up to 144 dwellings with informal and formal open space, associated landscaping and vehicular and pedestrian accesses off Semington Road. All matters reserved except for principal means of access.

Recommendation: ??



Site Location Plan



Aerial Photography

Site Context

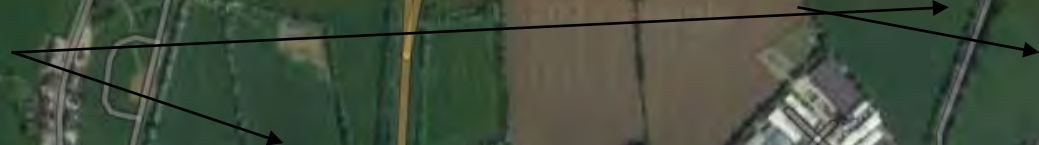
Primary School



Eastern Way

Melksha
Footb

New
housing



Melksham Oak
Community School

Bath Rd

A350

Bodm

Site



Google



Indicative Layout (A350 at top of picture)



Parameters Plan

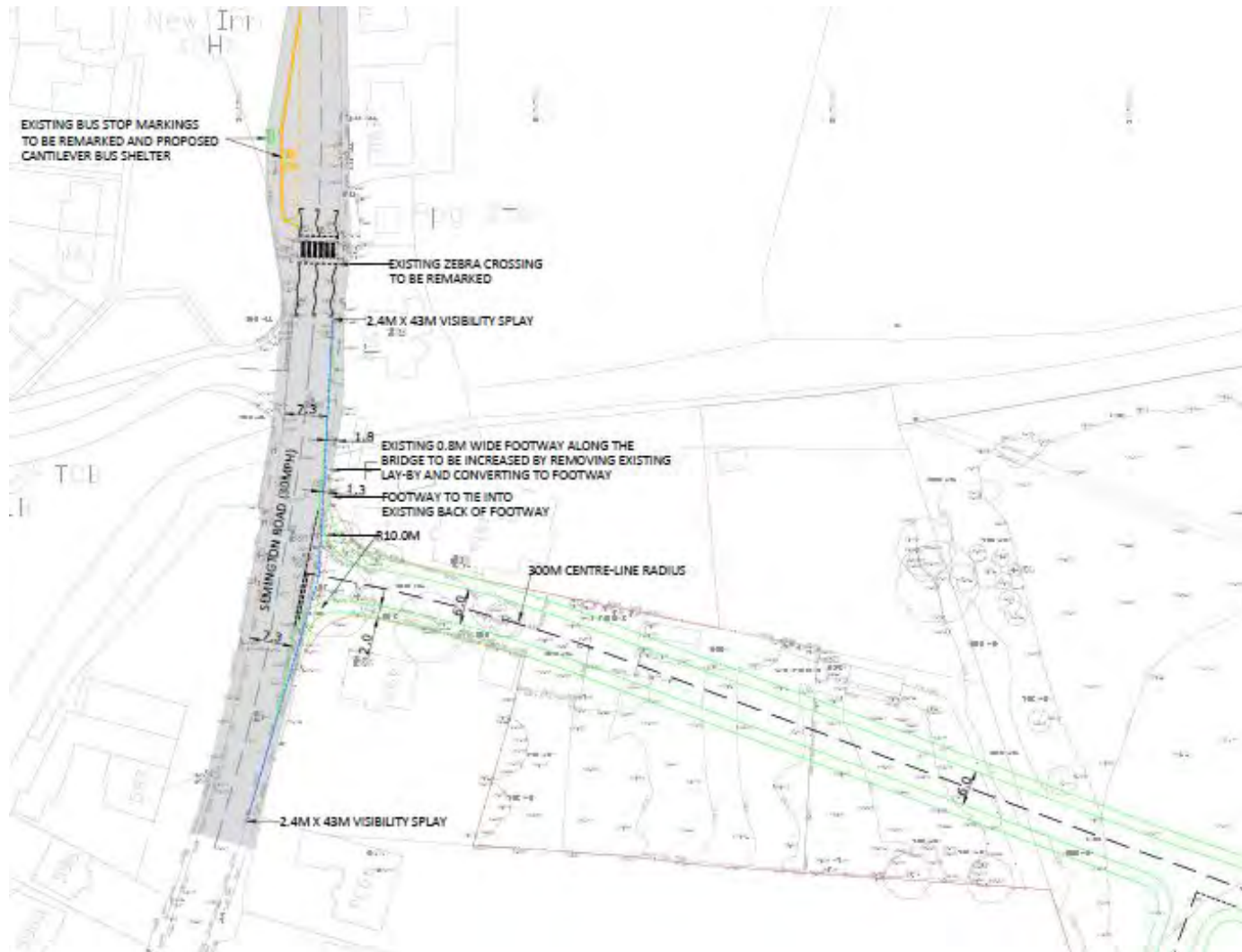
Key

- Development Parcel
- Higher Density Area
- Nodal Area
- Roads
- Unmanaged Natural Open Space (0.65 ha)
- Public Open Space (1.78 ha)
- Attenuation Basins (0.32 ha)
- Habitat Protection Area (0.53 ha)
- Green Wildlife Corridor (0.24 ha)
- Teen Shelter / Outdoor Gym
- LEAP
- Primary Street
- Secondary Street
- Link to Wessex Water Works
- Pedestrian Links
- Key Frontages
- Primary Access
- 3m Acoustic Fence

Development Area (5.42 ha)



Proposed Access off Semington Road



New Site Access Semington Road



View North from new Access to Bus Stop Semington Road



View South from new Access Semington Road



View across field North towards Treatment Plant



View North towards new development at Semington Lane (17/12514/REM)



View across field to East



View across field West towards existing houses fronting Semington Road



View across field South towards Hampton Park West



Entrance to Shails Lane from Semington Road



Eastern section of Shails Lane



Aerial photo A350 Western Way Roundabout



Semington Road North Approach to A350 roundabout



Semington Road North view of Western Crossing Approach A350



Eastern Crossing A350



Strategic Planning Committee

27 January 2021