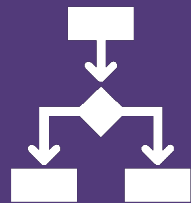


Health Select Committee

Wiltshire Health Inequalities Group



REDUCING HEALTHCARE INEQUALITIES

The Core20PLUS5 approach is designed to support Integrated Care Systems to drive targeted action in healthcare inequalities improvement

CORE20
The most deprived **20%** of the national population as identified by the Index of Multiple Deprivation



PLUS
ICS-chosen population groups experiencing poorer-than-average health access, experience and/or outcomes, who may not be captured within the Core20 alone and would benefit from a tailored healthcare approach e.g. inclusion health groups



Target population

CORE20 PLUS 5

Key clinical areas of health inequalities

1



MATERNITY
ensuring continuity of care for **75%** of women from BAME communities and from the most deprived groups

2



SEVERE MENTAL ILLNESS (SMI)
ensuring annual health checks for **60%** of those living with SMI (bringing SMI in line with the success seen in Learning Disabilities)

3



CHRONIC RESPIRATORY DISEASE
a clear focus on Chronic Obstructive Pulmonary Disease (COPD), driving up uptake of Covid, Flu and Pneumonia vaccines to reduce infective exacerbations and emergency hospital admissions due to those exacerbations

4



EARLY CANCER DIAGNOSIS
75% of cases diagnosed at stage 1 or 2 by 2028

5



HYPERTENSION CASE-FINDING
and optimal management and lipid optimal management



SMOKING CESSATION
positively impacts all 5 key clinical areas

REDUCING HEALTHCARE INEQUALITIES FOR CHILDREN AND YOUNG PEOPLE

CORE20
The most deprived 20% of the national population as identified by the Index of Multiple Deprivation



The **Core20PLUS5** approach is designed to support Integrated Care Systems to drive targeted action in healthcare inequalities improvement

PLUS
ICS-chosen population groups experiencing poorer-than-average health access, experience and/or outcomes, who may not be captured within the Core20 alone and would benefit from a tailored healthcare approach e.g. inclusion health groups



Target population

CORE20 PLUS 5

Key clinical areas of health inequalities

1



ASTHMA

Address over reliance on reliever medications and decrease the number of asthma attacks

2



DIABETES

Increase access to Real-time Continuous Glucose Monitors and insulin pumps in the most deprived quintiles and from ethnic minority backgrounds & increase proportion of children and young people with Type 2 diabetes receiving annual health checks

3



EPILEPSY

Increase access to epilepsy specialist nurses and ensure access in the first year of care for those with a learning disability or autism

4



ORAL HEALTH

Address the backlog for tooth extractions in hospital for under 10s

5



MENTAL HEALTH

Improve access rates to children and young people's mental health services for 0-17 year olds, for certain ethnic groups, age, gender and deprivation

Population and deprivation: Indices of multiple deprivation

There are

285

Lower Layer Super Output Areas (LSOAs) or small areas of geography, in Wiltshire

Of which

8

are in the 20% most deprived nationally.

The table below details each of these LSOAs and the 2019 IMD national decile in which it falls.

LSOA	2019 IMD national decile
Trowbridge John of Gaunt - Studley Green	1
Chippenham Queens - East	2
Salisbury Bemerton - West	2
Salisbury Bemerton - South	2
Salisbury St Martin - Central	2
Melksham North - South West	2
Melksham North - North East	2
Trowbridge Drynham - Lower Studley	2

Indices of multiple deprivation: LSOA's in Wiltshire in the 20% most deprived nationally, by their 2019 IMD national decile

These 8 LSOAs are all classified as 'Urban city and town' under the Rural-Urban classifications produced by the Department for Environment, Food and Rural Affairs (DEFRA), and are located in the following towns in Wiltshire:

- Trowbridge
- Chippenham
- Salisbury
- Melksham



The total population living in these 8 LSOAs is

13,924

which is 3% of Wiltshire's total population

0 -19 year olds: 27%
20 - 64 year olds: 56%
65+ year olds: 17%

Compared to the overall Wiltshire population, there is a higher proportion of younger people aged 0 - 19 living in these LSOAs, and a lower proportion of those aged 65+.



Key local documents



Strategy

The **CORE20PLUS5** provides the framework. Local **PLUS** groups are:

- **Adults:** Routine and manual workers (specifically those in minority groups, e.g. polish speakers) and Gypsy, Roma and Traveller communities
- **Children and Young People:** Children from Gypsy, Roma, Boater and Traveller communities
- For Children and Young People, the BSW 'PLUS' groups are:
 - **Children with Special Educational Needs and Disability (SEND)**
 - **Children with excessive weight and living with obesity**
 - **Children Looked After (CLA) and care experienced CYP**
 - **Early Years** (with a focus on school readiness)
 - **Children and Young People with Adverse Childhood Experiences (ACE);** with a focus on delivering trauma informed services)

The BSW strategy outline phases

Phase 1: Awareness Raising

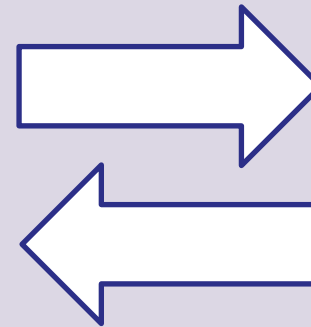
Phase 2: Healthcare Inequality

NHS Five Key Priorities

1. Restore service inclusively
2. Mitigate against digital exclusion
3. Ensure datasets are timely and complete
4. Accelerate preventative programmes
5. Leadership and accountability

Core20PLUS5

- Core 20% of most deprived areas
- PLUS Groups (defined at place):
 - People from ethnic minority backgrounds (Swindon)
 - Routine and Manual workers, Gypsy, Roma and Boater communities (Wilts)
 - Socially excluded and vulnerable groups including looked after children and migrants (BANES)
- Five clinical areas:
 - Adults
 - CVD
 - Maternity
 - Respiratory
 - Cancer
 - Mental Health
 - CYP
 - Asthma
 - Diabetes
 - Epilepsy
 - Oral Health
 - Mental Health



Phase 3: Prevention and social, economic, and environmental factors

Priority Areas:

- Anchor institutions
- Publish three place-based Joint Strategic Needs Assessments for BANES, Swindon, and Wiltshire
- Establish local priorities that address public health and the social, economic, and environmental factors most affecting inequalities at place
- Plan and enable progress on prevention where outcomes will take longer to see

Committed areas of focus

- Whole system approach to Obesity
- Whole system approach to Smoking

Cross-cutting themes: Population Health Management (PHM); Equality, Diversity, and Inclusion (EDI); Workforce; Prevention; Personalised care



Reports to:

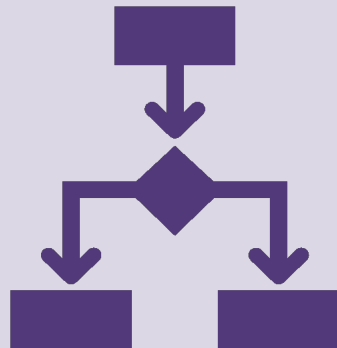
- Wiltshire Integrated Care Alliance Partnership Committee
- BSW Inequalities Strategy Group.

Meets monthly with alternating focus across Healthcare and Partnership agendas.

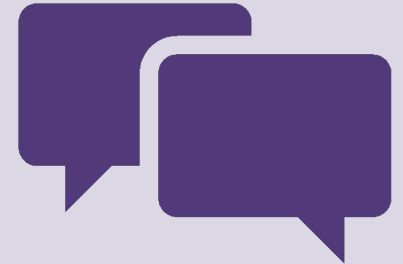


NHS England Health Inequality Funding commenced in 2022. Projects funded using this funding in Wiltshire are monitored and reported through the Wiltshire Health Inequalities Group, providing assurance at place and system level.

Established in December 2022, the Wiltshire Inequalities Group brings together partners across Wiltshire to collaborate on tackling the drivers of inequalities across Phase 2 and Phase 3 of the strategy; Healthcare inequalities and Wider Determinants



Data driven, uses local data and evidence to inform practice and make connections to deliver against the BSW strategy on reducing inequalities.



Background to Health Inequalities Funding (HIF)

The **BSW Reducing Inequalities Strategy** aims to address inequalities across the life course, to include pregnancy, children and young people, adults and into old age. It aims to build a foundation for a shared understanding of health inequalities as a system, bringing together existing strategy and local data and intelligence and focusing this on the CORE20PLUS5 population.

*To work in partnership to tackle inequalities across the life course to ensure that every resident of Bath, North East Somerset, Swindon, and Wiltshire can live longer, healthier, happier lives.
BSW Reducing Inequalities Strategy*

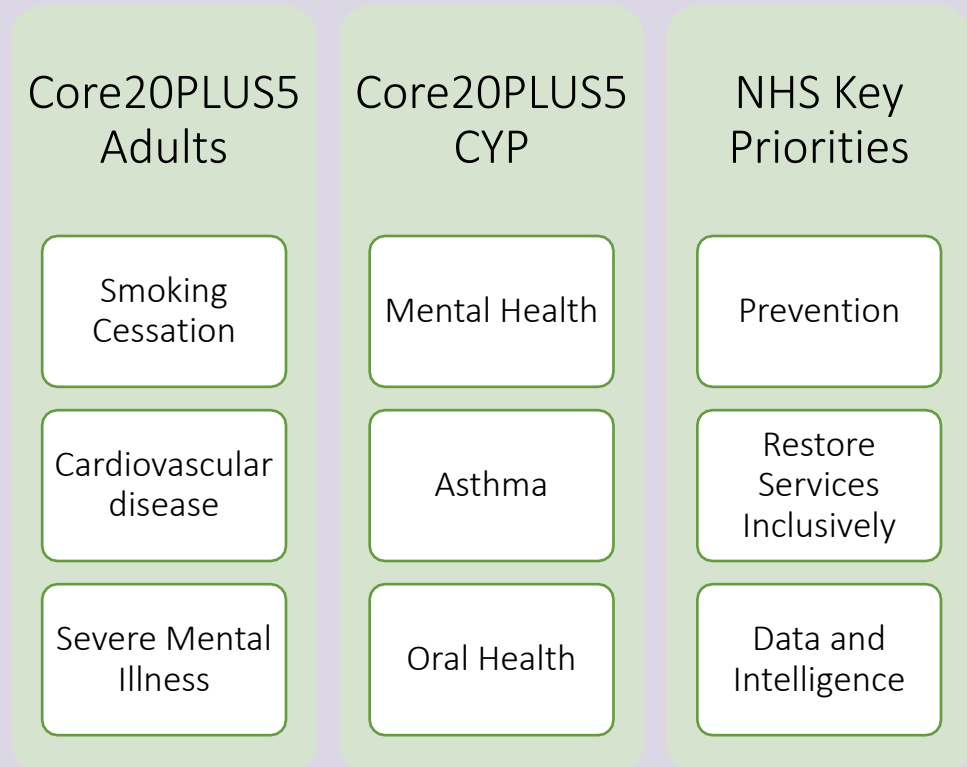
The strategy aims to tackle inequalities through the delivery of the NHS key priorities and the Core20PLUS5 for adults and Children & Young People. The PLUS groups for Wiltshire:

- Wiltshire adult PLUS:
 - Gypsy Roma Traveller and Boater (GRTB)
 - Routine and manual workers
- Wiltshire CYP PLUS:
 - Children of GRTB families

The strategy includes a focus on prevention, social, economic and environmental factors (known as the wider determinants). For Wiltshire, the wider determinants priority is Connectivity and Transport

Priorities for 2023/24 Health Inequalities Funding

In order to prioritise the Health Inequalities Funding activity, the below priorities have been agreed as focus areas for BSW in 2023/24:



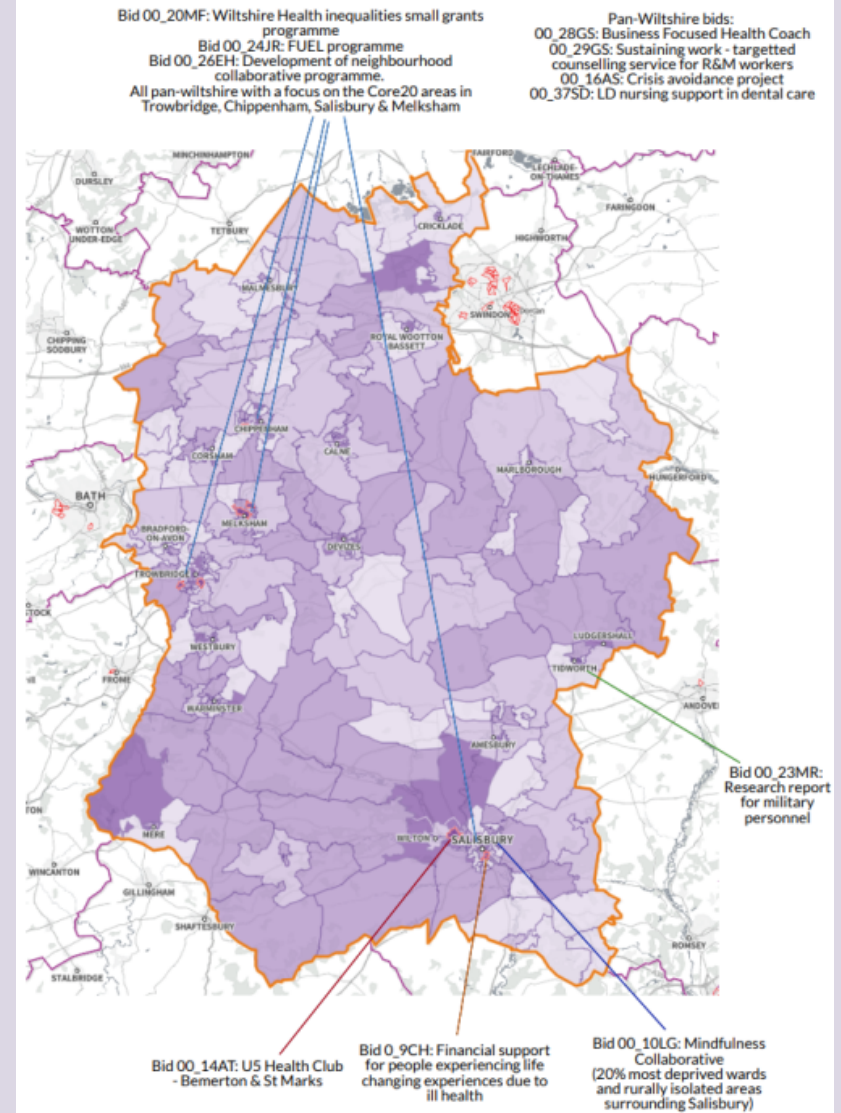


22/23 funding supported:

- Health Inequality Team
- Gypsy Rome Traveller Boater Outreach
- Five to Thrive – Community
- Warm packs (Wiltshire Warm and Safe)

23/24 funding supporting projects including:

- Neighbourhood Collaboratives
- Small Grants programme (Wiltshire CIL)
- Business focussed Health Coach, inc counselling for Routine & manual workers
- Mental Health crises avoidance
- Dental Care Learning Disability Nursing Support
- <5 health club
- Financial support for people experiencing ill health
- Mindfulness collaborative
- Military population insight project



Population Data

- JSNA launch workshop
- Introduction and launch demonstrations of Population Health Data tools
- Working alongside the system delivery of Phase 1 of strategy – understanding inequality

Acute Trust Activity

- Making Every Contact Count (MECC)
- Veteran patient pathways
- Learning disabilities
- Partnership working

Sharing best practice and local activity

- PCN population health fellow project presentations: weight management referral in Melksham and BoA PCN
- Neighbourhood collaboratives
- Whole systems approach to tobacco control / Treating Tobacco Dependency
- The role of the Wiltshire and Swindon Police and Crime Commissioner
- Whole systems approach to obesity
- Whole systems approach to tobacco control

Monitoring of Health Inequality Funded projects

- Annual reporting of progress and outcomes
- Network for support and learning, identifying challenges and successes in implementation
- Future reporting framework under development across BSW

Annual conference

- Bringing together partners
- Showcase Health Inequality funded projects
- Recap in the system and place landscape
- Focus on role and remit of group
- Review membership
- Showcase successes
- Learn from other areas

Link to System activities

- New ICB lead prevention and inequalities
- Link across with BANES and Swindon
- Readiness for refresh of BSW Reducing Inequalities Strategy in 2024
- ICB Recurrent commitment Health Inequalities funding, continuing role of WHIG to advise and support the process
- Acute Hospital Alliance

Assurance and governance

- BSW/Place
- More rigorous NHS guidance
- SFT Strategy Deployment