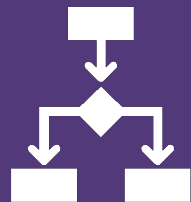


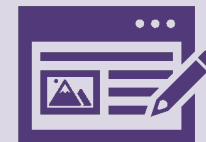
Substance Use Grants

February 2024

Kelly Fry and Lizzie Shea, Wiltshire Public Health

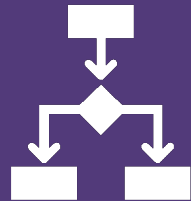


- Supplementary Substance Misuse Treatment and Recovery Grant (SSMTRG)
 - Review of current spend and Year 3 plans
- Rough Sleeper Drug and Alcohol Treatment Grant (RSDATG)
 - Update Year 3 plans
- Inpatient Detoxification grant (IPD)
 - Update on spend
- Individual Placement Support (IPS)
 - Update on spend



Supplementary Substance Misuse Treatment and Recovery Grant

(SSMTRG) - Year 3 2024/25



Review of Ambitions

	Baseline (Apr-Mar 2022)	Change from Baseline (+/-)	Latest performance (Dec 2022-Nov 2023)	Original year 3 ambition 2024/25	Revised year 3 ambition (Stretch) 2024/25
Capacity					
All adults "in structured treatment"	1505	+271	1776	1730	1861
Opiates	505	+40	545	550	591
Non opiates (combined non-opiate only and non-opiates and alcohol)	417	+50	467	480	504
Alcohol	583	+181	764	700	766
Young people "in treatment"	225	+1	226	300	275

	Baseline (Apr-Mar 2022)	Change from Baseline (+/-)	Latest performance (Dec 2022-Nov 2023)	Original year 3 ambition 2024/25	Revised year 3 ambition 2024/25
Continuity of care					
Local planning (%)	38%	+14%	52%	60%	60%

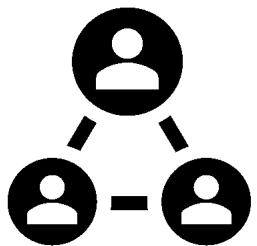
	Baseline (Apr-Mar 2022)	Change from Baseline (+/-)	Latest performance (Dec 2022-Nov 2023)	Original year 3 ambition 2024/25	Revised year 3 ambition 2024/25
Residential rehabilitation					
Local planning (number)	12	+9	21	12	15

Note: data is collected on a 12-month rolling basis.

SSMTRG 2024-25 Areas of Planned Investment

2023-24 allocation	£358,692
2024-25 allocation	£633,699

Workforce

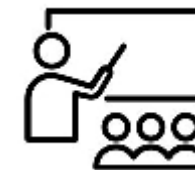


- First Point of Contact Workers
- Lived-Experienced workers
- Engagement & Prevention
- Criminal Justice (adults & Young People)
- Non-medical prescriber
- Project Support
- Recovery workers
- Young Adults (18-25yrs)

Additional Drug costs – buvidal & naloxone



Regional coordination of IPD



Staff and peer mentor training budget

Peer mentoring development



Stock for needle dispensing



Recovery services & communities

Existing recovery support services provisions:

- Recovery support element of Connect service reviewed in 2023-24.
- Connecting Voices (service user forum).
- Wiltshire HOPE project rolled out county wide.

2024/25 plans:

- Monitor and review implementation of new recovery support element of Connect service.
- Monitor and review Wiltshire HOPE project.
- Peer-led post-rehab group to be launched.
- Mobilise Individual Placement Support (IPS) funding.
- Recruit 2 FTE paid lived-experience posts

Drug and Alcohol Related Deaths

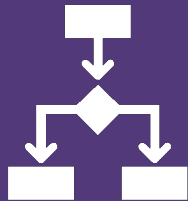
Wiltshire response

- Reviewed our Drug and Alcohol Related Death review processes
- Blue Light Project lead and training
- Tier 2 support – harm reduction advice, needle exchange, naloxone and nyxoid
- Mobilising clinical team
- Developed Tier 4 pathway (inpatient detox and residential rehabilitation)
- County-wide roll out of Wiltshire HOPE project
- Review and relaunch of recovery element of Connect service
- FibroScan devices to identify liver disease/ scarring
- Identification and Brief Advice training
- Review of Wiltshire Local Drug Information System (LDIS)
- Campaigns for Overdose Awareness Week and International Overdose Awareness Day

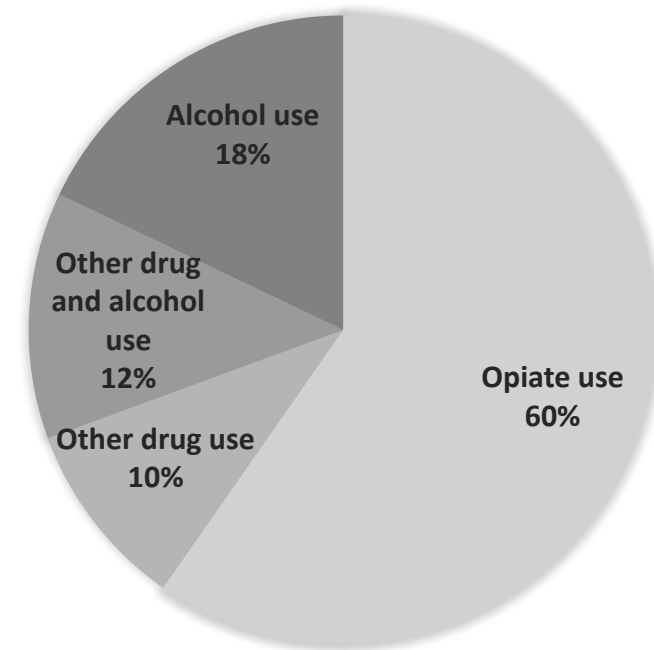
- Year 3 template submitted 31/01/24
- Recruitment to commence new posts
- Ongoing review meetings to monitor grant activity
- **Succession planning** – beyond April 2025
 - Risks / Gaps
 - Any new grant opportunities?

Rough Sleeping Drug and Alcohol Treatment Grant

(RSDATG) – Year 3 2024/25



	At risk cohort	Rough sleeping cohort
The total number of unique individuals engaged with the RSDATG service since the start of the financial year (2023-24)	167	25
The total number that were engaged with the RSDATG service across the quarter (Q3 2023-24)	119	15
Number of treatment exits from RSDATG service across the quarter (Q2 2023-24)	26	7



Background

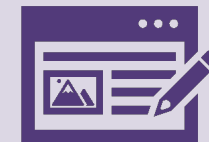
- Regularly missing doses at pharmacy, poor mental health including frequent suicidal ideation, poly drug use 3-4 days per week (heroin, crack, cannabis, illicit benzos and pregabalin), struggling to attend appointments/ groups.

Support

- RSDATG team supported on 1-2-1, weekly basis at supported accommodation premises.
- Regular liaison and information sharing with worker at supported accommodation.

Outcomes

- Slow reduction in on top use, reduced opiate substitution therapy.
- August 2023 – moved into independent accommodation and maintaining independent tenancy well with regular ongoing appointments with RSDATG worker.
- Improved physical health, ongoing support for mental health.



Background

- 7 previous treatment episodes – approximately 6-month maximum duration.
- Poor mental health, multiple suicide attempts, polydrug use (heroin, crack, alcohol, cannabis and cocaine), groin injecting, evicted from supported accommodation due to anti-social behaviour, regular hospital admissions.

Support

- Regular appointments with RSDATG team on an ad-hoc basis due to struggling to engage with structured appointments.
- Criminal justice team support with Drug Rehabilitation Requirement.
- Robust joint working between Julian House, RSDATG, Criminal Justice/ Probation.

Outcomes

- Maintaining tenancy at Julian House, engaging in groups with positive feedback from facilitators, reported abstinence from heroin, cocaine and cannabis, reduced anti-social behaviour.

RSDATG 2024-25 Areas of Planned Investment

2022-2024 allocation	£ 841,363
Indictive 2024-25 allocation	£ 568,770



Outreach workers

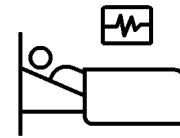
Prescriber

Recovery worker

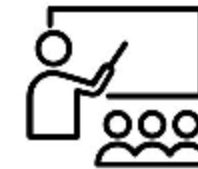
Project support

Non-Medical Prescriber

Health Care Assistants



Inpatient
detox/rehabilitation



Staff training

Volunteer costs



Venue Hire

- Sign MOU
- Secure sign off on 2024-25 RSDATG budget plan
- Monitor RSDATG activity
- **Succession planning** – beyond April 2025
 - Risks / Gaps
 - Any new grant opportunities?

Inpatient Detoxification (IPD)

Continuing to work with Connect to utilise IPD bed spaces.

2023-24 funding allocation	£40,632
Total 2023-24 bed day allocation	82
Proportion of allocation used (Q3 2023-24)	46%

2024-25 funding allocation	£40,632
Total 2023-24 bed day allocation	82

Next steps:

- Attend IPD steering groups
- Monitor uptake of bed spaces

Individual Placement Support (IPS)

IPS aims to support people into paid, mainstream jobs, short-term training, volunteering and work placements.

IPS 2024-26 funding allocations	
Year 1 (2024-25):	£157,805
Year 2 (2025-26):	£165,695

Next steps:

- Work with OHID to implement



Any questions?