

# Chippenham Area Board

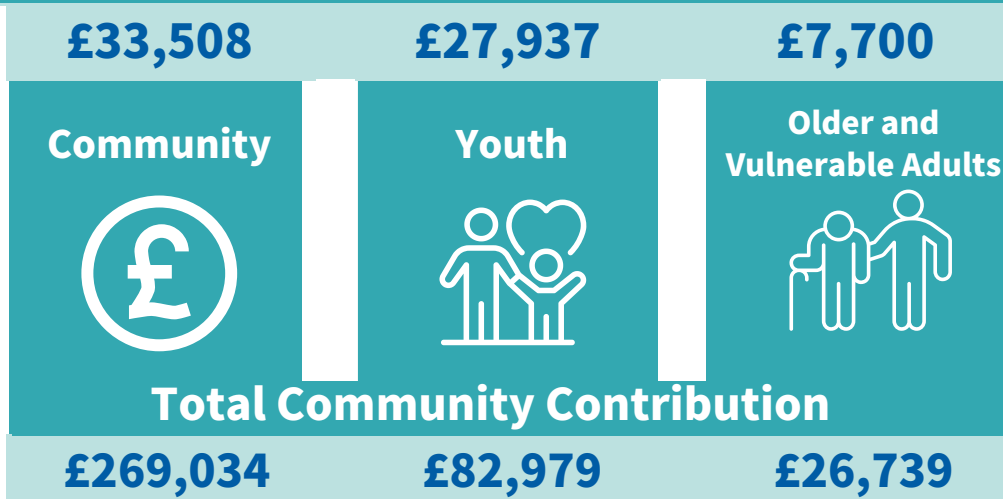
## End of Year Report April 2023 - March 2024



### Area Board Investment

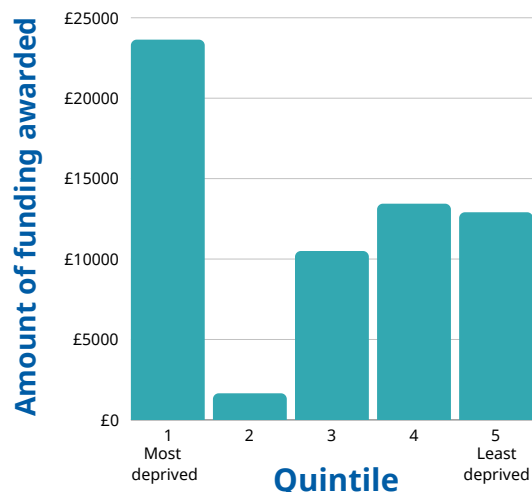
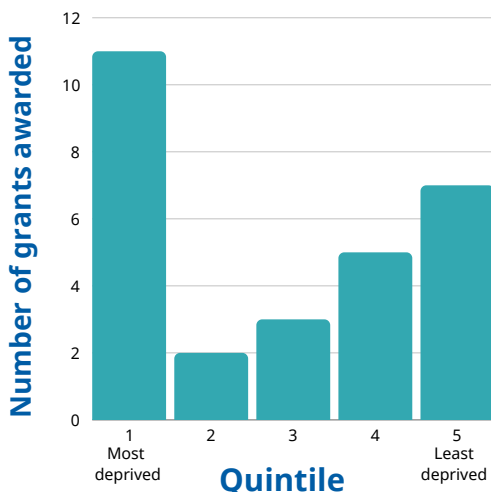
The Area Board invests in local community projects and initiatives that meet local priorities and deliver exceptional outcomes for residents. The Area Board aims to work in partnership to achieve maximum value for its investment.

#### Total Area Board Investment



The total amount invested in projects through additional community contribution, from fundraising, grants, services in kind or volunteering

### Investment by deprivation quintile



# Local Priorities

The Chippenham Area Board reviewed available local data and evidence and integrated this with local knowledge and community conversation to agree the following local priority themes. The Area Board has undertaken a series of more specific local actions to positively address them, including the key achievements below:



## Youth engagement and positive activity opportunities

We co-ordinated the Local Youth Network, set up regular informal LYN meetings (toast club) and created a WhatsApp group helping to strengthen communication and engagement between youth providers and the secondary schools. We delivered the first Chippenham Teen Takeover involving 40 providers across 30 venues, showcasing the local youth offer to over 400 young people.

## Addressing climate change

We facilitated the Climate and Ecological Emergency Forum and created stronger links with the town and parishes, sharing resources, best practice and updates from the Wiltshire Council Climate Team. Schemes such as HUG2 Retrofit, Green Homes and Tree Wardens were promoted, and a survey produced to understand level of activity at town and parish level to address the climate and nature emergency.



## Supporting positive mental health and wellbeing

We continued to support the Chippenham Health and Wellbeing group and promoted opportunities to local organisations. We funded projects at Doorway, Chippenham Day Centre and Chippenham Shed to reduce social isolation and loneliness. We helped establish a new Neighbourhood Collaborative focusing on hypertension and hosted a Five To Thrive trauma informed workshop for community leaders helping to build resilient communities.

## Reducing Anti Social Behaviour

We supported two successful Million Hours bids from the Rise Trust for additional hours of youth work for young people at risk of ASB. We attended the Community Safety Forum and Purple Flag breakfast and facilitated discussion with the Neighbourhood Policing Team at Area Board and Parish Forum meetings.



## Supporting the local economy and cost of living crisis

We visited foodbanks, promoted HSF and Wiltshire's FUEL Programme and invested in local organisations supporting low-income households. We received briefings on the Chippenham One Plan and helped to promote the consultation which received over 2000 responses. We supported the work of the Town Team and shared information and opportunities with local businesses.

# Engagements

The Chippenham Area Board works alongside other organisations to make things happen in the local community. These groups include the town council, voluntary and community groups, youth organisations, sports clubs and local charities.

The Area Board wouldn't be able to achieve what they do without these partners working on the ground with them. The Area Board hosts regular business meetings, engagement activities, events, surveys and working groups to stimulate and support local community action.

Area Board  
Business meetings

4



Attendances

138

Area Board  
working groups

22



Attendances

252

Engagements/  
events/ activities

60



Attendances

610

# Local Highways and Footpath Infrastructure group

The LHFIFG is a sub group of the Chippenham Area Board, which deals specifically with highway issues. They aim to find solutions for local transport issues, such as road repairs, traffic problems, road layouts and parking. The amount allocated is dependent on the geographical size and population for the community area and the funding allocation is for capital expenditure and can be used to provide new and improved highway infrastructure.

LHFIFG meetings

4



Attendances

44



£58,486

LHFIFG projects  
completed

17

