

Welcome and Introductions

Councillor Graham Wright – Chairman



Wiltshire Council

Stonehenge Area Board

- Cllr Ian Blair-Pilling, Avon Valley (Vice-Chairman)
- Cllr Kevin Daley, Till Valley
- Cllr Dr Monica Devendran, Amesbury West
- Cllr Mark Verbinnen, Amesbury East and Bulford
- Cllr Graham Wright, Durrington (Chairman)
- Cllr Robert Yuill, Amesbury South

Parishes in attendance?

Stonehenge Area Board

- New Area Board model with 4 business meetings per year and other face to face events
- September events were:
 - 2nd September Local Youth Network held in Bulford
 - 10th September Paths4All launch event held in Netheravon
 - 21st September Health and Wellbeing event held in Amesbury
- Drop-in clinics, held monthly, next one on **4 October**
- Upcoming events:
 - Climate event in October / November
 - Councillors and Community Engagement Manager are "out and about" visiting Parishes, groups and organisations

2) Apologies for Absence

- Matthew Maggs, DWFRS, Dave Adamson attending instead
- Gillian Clarke 1ST Amesbury Girls' Brigade

3) Minutes *(pages 1-36)*

- To confirm the minutes of the meeting on 10 June 2021

4) Declarations of Interest

- To receive any declarations of disclosable interests or dispensations granted by the Standards Committee

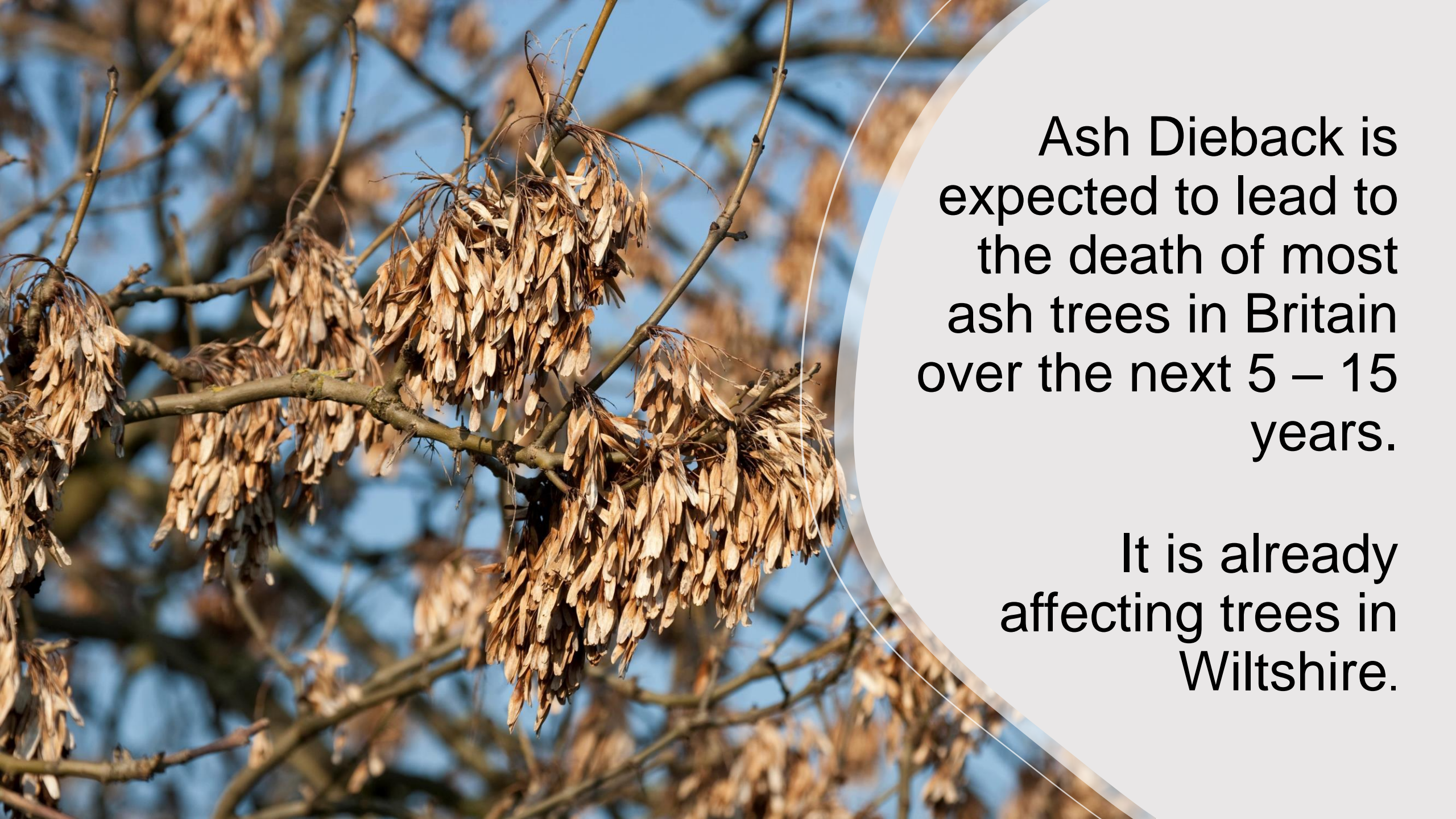
5) Chairman's Announcements *(pages 37 - 46)*

- Ash Dieback *(pages 37 – 39)*



Ash Dieback

**Landowners need
to act now**



Ash Dieback is expected to lead to the death of most ash trees in Britain over the next 5 – 15 years.

It is already affecting trees in Wiltshire.



Ash dieback is a serious public safety issue.

Landowners are responsible for dealing with it on their land.

All landowners need to identify ash trees growing alongside the **highway, public rights of way and in public spaces** showing signs of this disease and take action.



[Ash dieback video](#)

Useful sources of information about ash dieback:



www.wiltshire.gov.uk/recreation-trees-forests



www.treecouncil.org.uk



www.woodlandtrust.org.uk



www.forestresearch.gov.uk



www.trees.org.uk



Forestry Commission blog

www.forestrycommission.blog.gov.uk

5) Chairman's Announcements *(pages 37 - 46)*

- Healthwatch Wiltshire update *(page 41)*
- B&NES, Swindon and Wiltshire CCG update *(pages 43 – 46)*
- A303 Highways England *(update in agenda supplement 1)*
- Procedural Note
 - Please note that all decision recommendations (such as grant awards) at this meeting will be ratified by the Leader of Wiltshire Council following the meeting. This is to comply with legal requirements as the meeting is being held online.

6) Partner Updates *(pages 47 - 62)*

- **Dorset & Wiltshire Fire and Rescue Service** *(pages 47 – 53) - Dave Adamson (in place of Matthew Maggs)*
- **Wiltshire Police** *(pages 55 – 62) - Inspector Tina Osbourn*
- **Police and Crime Commissioner** - *Philip Wilkinson*
 - invitation to our drop-in clinic on 1 November, 7pm
- **Town and Parish Councils**
- **MOD/MCI** - *Glyn Williams, Larkhill Garrison and Nicholas Turner, Tidworth, Netheravon and Bulford Garrison*

7) Five Year Highways Plan – Find out what roads are planned to be resurfaced *(pages 63 - 98) pages of most interest 66 - 69*

- A presentation from Dave Thomas (head of Highways Asset Management and Commissioning).

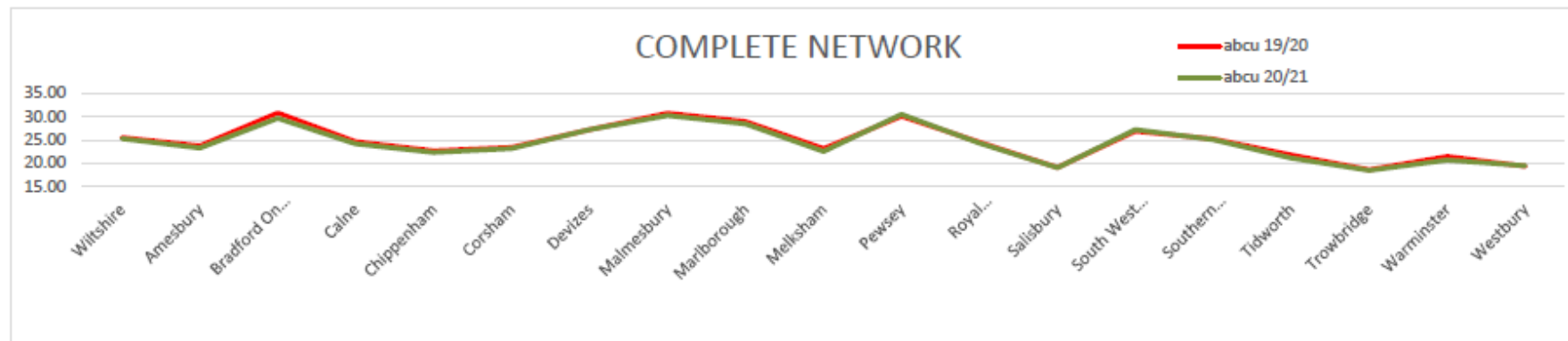
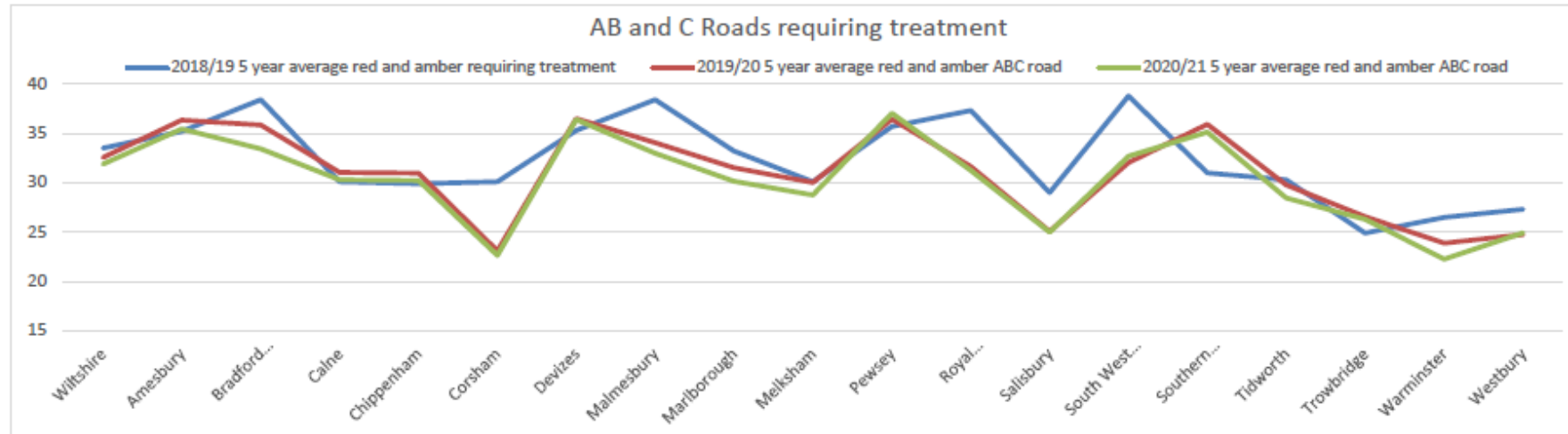
Diane Ware CMgr MCMI, I.Eng FIHE
Principal Technical Officer (highways)
Highways Assets and Commissioning

5 YEAR MAJOR MAINTENANCE PLAN

Email: diane.ware@wiltshire.gov.uk

CURRENT CONDITION BY AREA BOARD

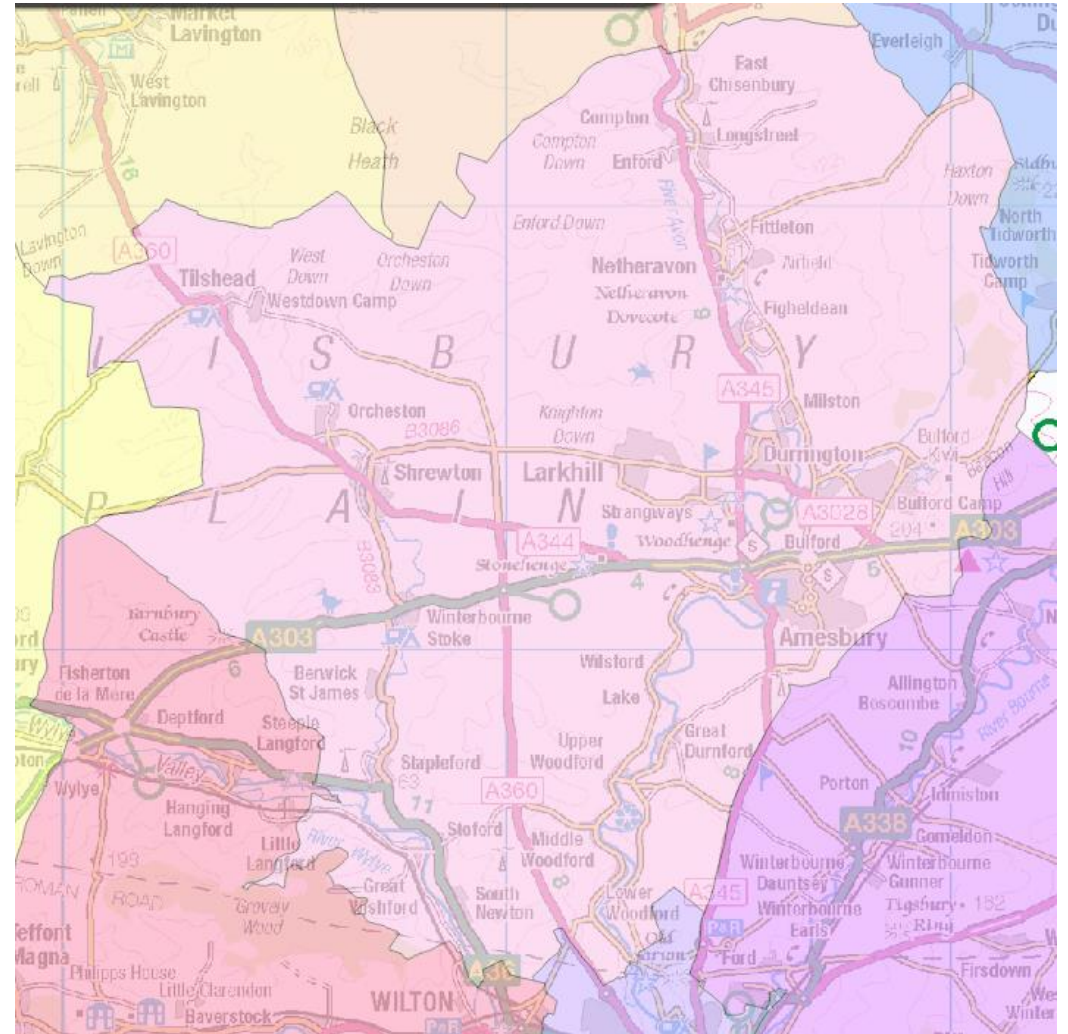
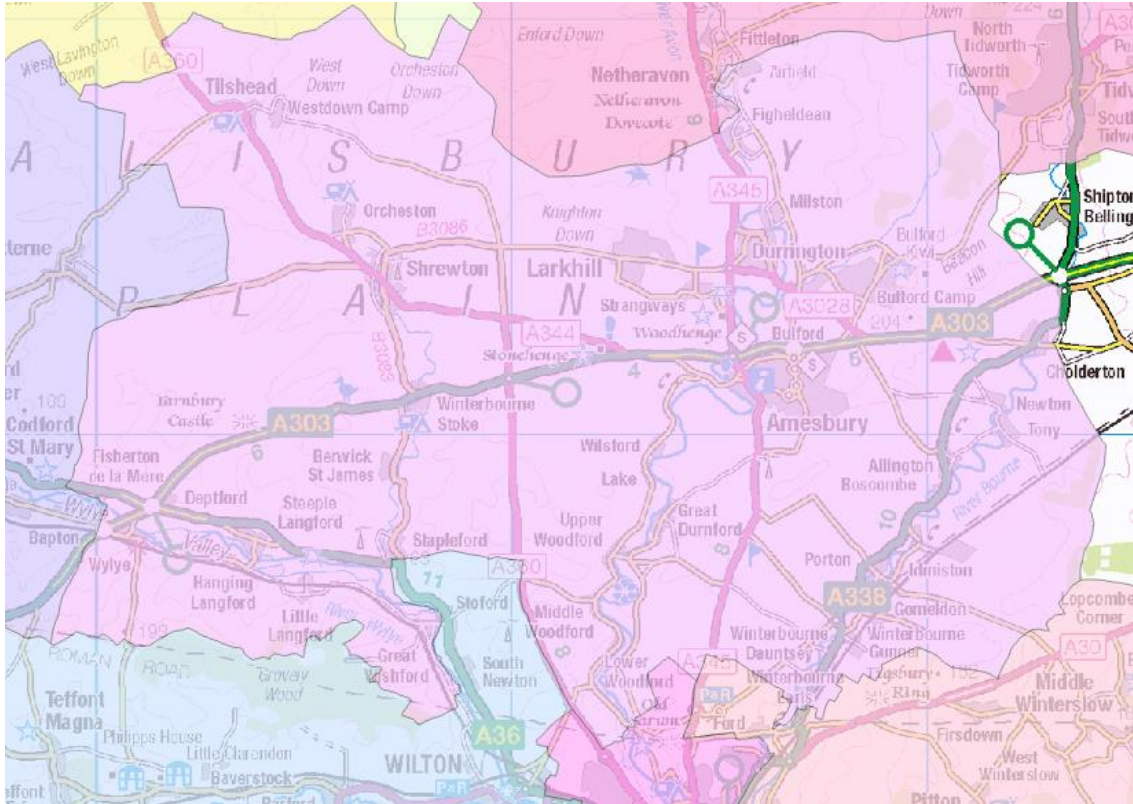
TOTAL % OF THE ADOPTED NETWORK REQUIRING MAINTENANCE



A 5 year average is used to monitor the condition of the network due to the surveying regime of undertaking a 50% network length

The graphs show that even with a deteriorating network the targeted maintenance schemes are generally improving the overall condition of the roads within Wiltshire, a rolling 5 year programme and funding process is designed to allocate resources to those areas with a higher percentage of poor roads based on their network length.

The target is for all area boards to be at the same low level of around 20% of the network requiring some form of maintenance



AREA BOARD CHANGES – BUDGET AND SCHEME ALTERATIONS – NOT FULLY IMPLEMENTED

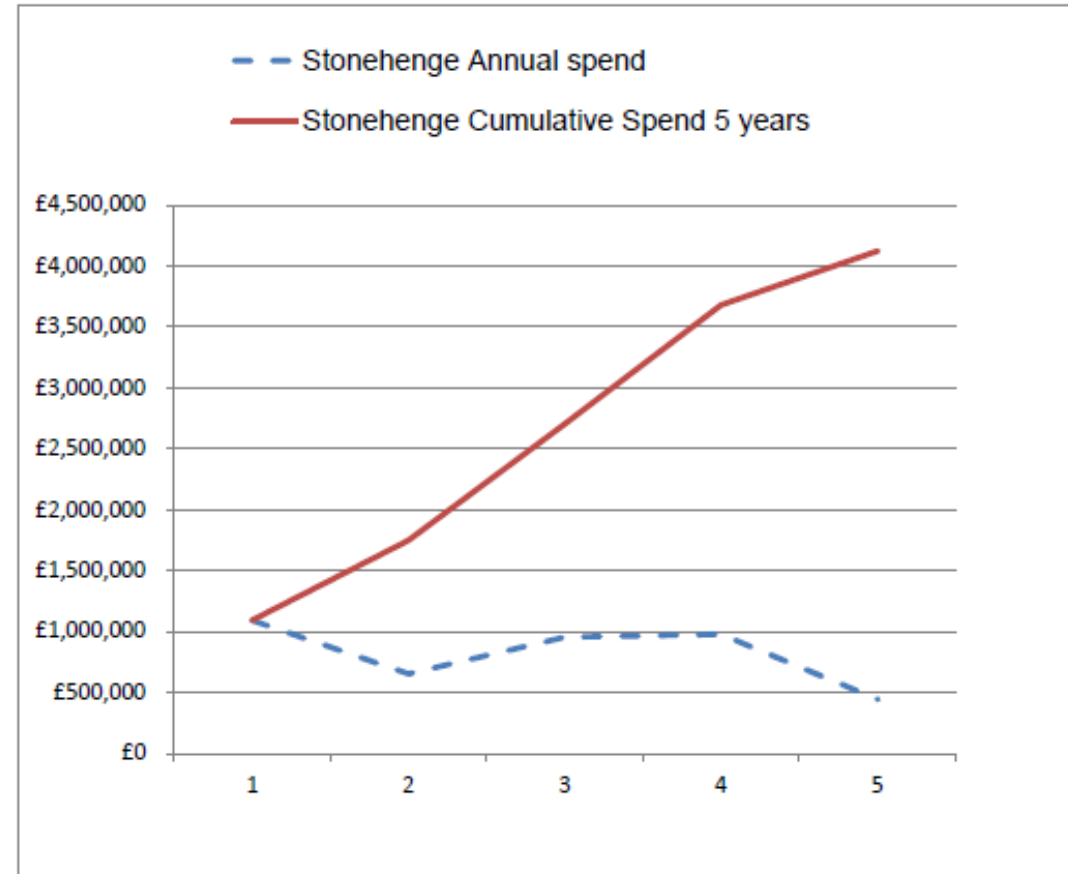
spend profile

	Stonehenge Annual spend	Stonehenge Cumulative Spend 5 years
2022/23	£1,092,683	£1,092,683
2023/24	£655,000	£1,747,683
2024/25	£955,000	£2,702,683
2025/26	£976,799	£3,679,482
2026/27	£445,000	£4,124,482
total	£4,124,482	

£3,376,918 average 5 year Wiltshire area board budget

NOTE THE BUDGETS MAY BE SIGNIFICANTLY ALTERED

CONDITION 5-year average red and amber requiring treatment	Wiltshire	Amesbury
AB and C roads 2018/19	33.5	35.2
AB and C roads 2019/20	32.57	36.34
AB and C roads 2020/21	31.90	35.44
2019/20 Unclassified	18.50	11.10
2020/21 Unclassified	18.60	11.10



Some schemes have been postponed due to covid issues, i.e. if they are on the route to a vaccination centre or to a key industrial area, these works have been moved to 2022/2023, potential budget issues may mean they are delayed for longer **The condition table is to be updated THE AREA BOARD CHANGES ARE IN PROGRESS**

Early intervention carbon savings – New Contracts

Early intervention carbon savings – Preventative Treatments



Scheme Manager
Scheme Investigation Form

Scheme No
977039

SCHEME DATA SET: Approved Schemes
LOCATION: UC THE PACKWAY
ROAD CLASS: Unclassified

ASSET: ?
SURVEY: Manual Input
STATUS: Awaiting Review

EASTING: 413,335.32

NORTHING: 144,220.42



INSPECTION NOTES

Treatment Specification

Type: Thick Overlay_Inlay
Stone: ?
Material: ?
Binder: ?
Depth: ?
PSV Rating: ?
Next Treatment: ?
Treatment Surface: ?

Comments:

Scheme Detail:

Proposed Treatment:

Length: 0 Width: 0.00 Area: 0.00 Estimated Costs: £0

RANKING/SCORE

Rutting: 14.74 3m Profile: 7.96 10m Profile: 12.42 Texture: 29.24 Cracking: 15.25 Ranking: 79.6

For Asset Use

Final Scheme Cost:(£)
Inspected by : Date :/...../.....

For Scheme Manager Use

Construction Records Update :

Scheme Manager
Scheme Investigation Form

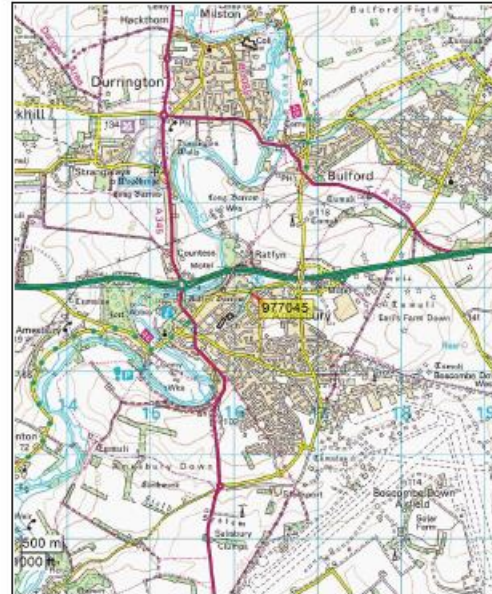
Scheme No
977045

SCHEME DATA SET: Approved Schemes
LOCATION: UC James Road Amesbury
ROAD CLASS: Unclassified

ASSET: ?
SURVEY: Manual Input
STATUS: Awaiting Review

EASTING: 416,298.00

NORTHING: 141,851.79



INSPECTION NOTES

Treatment Specification

Type: ?
Stone: ?
Material: ?
Binder: ?
Depth: ?
PSV Rating: ?
Next Treatment: ?
Treatment Surface: ?

Comments:

Scheme Detail:

Proposed Treatment:

Length: 0 Width: 0.00 Area: 0.00 Estimated Costs: £0

RANKING/SCORE

Rutting: 46.99 3m Profile: 16.83 10m Profile: 20.95 Texture: 64.97 Cracking: 0.00 Ranking: 149.

For Asset Use

Final Scheme Cost:(£)
Inspected by : Date :/...../.....

For Scheme Manager Use

Construction Records Update :



[Adoption](#)

Do something remarkable, change a child's future

[Adult care](#)

Helping adults with disabilities, support and social care, information for carers.

[Apply for jobs](#)

Information on jobs, employment skills, training and DBS applications

[Archives, heritage and conservation](#)

Research your ancestors and the history of Wiltshire towns or parishes

[Arts](#)

Art services, resources, funding, Arts health and education and our service database

[Business rates](#)

Pay your business rates, apply for business rate relief

[Children and young people](#)

We protect, care for and support vulnerable children and young people in the community

[Child exploitation and extra familial harm](#)

Help and advice for young people, parents and professionals, County Lines

[Civil emergencies](#)

Advice and contact details in case of an

[Courses, qualifications and skills](#)

Includes Wiltshire training, employment and skills

[Early years and childcare](#)

Includes jobs and training, information for professionals and free funding

[Economic development](#)

Supporting local businesses, partnerships and networking

[Environmental protection](#)

Includes noise, air quality, drainage, permits, water and bonfires

[Food safety and standards](#)

Includes food business advice, inspections, safety and hygiene courses

[Fostering](#)

Make a difference to the life of a local child, every day.

[Gypsies and travellers](#)

Information for and about gypsies and travellers.

[Health and safety](#)

Includes advice, licences and permits and event safety

[Highways](#)

Includes road closures and disruptions, streets and road care and reporting an issue

[Housing](#)

[MCI/Army basing](#)

Discover more about Wiltshire's Military Civilian Integration presence and its communities

[Parenting support](#)

Includes information and support for parents

[Parking](#)

Includes information on car parks, parking tickets, blue badges, restrictions and permits

[Pest control](#)

Pest inspections, treatments, and advice on keeping your home or business pest-free

[Planning and building control](#)

Search, submit or comment on planning applications

[Public health](#)

Working to improve the wellbeing and quality of life of Wiltshire's population

[Recreation](#)

Includes parks, open spaces, countryside, rights of way, travel and tourism

[Registration service](#)

Register a birth or death, or arrange a ceremony at your local registration office

[Rubbish and recycling](#)

Report an issue or request a new bin. Information on bin collections, chargeable garden waste and recycling centres



[Home](#)

- Adoption >
- Adult care >
- Apply for jobs >
- Archives, heritage and conservation >
- Arts >
- Business rates >
- Children and young people >
- Child exploitation and extra familial harm >
- Civil emergencies >
- Climate change >
- Community and environment >
- Community safety >
- Council, democracy and >

Highways

- Highways Asset Management
- Highways improvements
- Roads, road care and cycle lanes
- Freight** >
- Roadworks and related information
- New active travel schemes
- Special event road closures
- Streets and street care
- Streetscene enhanced services
- Gritting and snow clearance
- Bridges
- Highway records
- Community area transport groups

Highways Asset Management

The local highway network is vital for businesses and communities, and effective maintenance to ensure its availability is essential to the economic development of the county. Wiltshire Council recognises the importance of maintaining and managing its highway network effectively.

Wiltshire Council is committed to the good management of the highway asset and has been implementing asset management principles for many years. There has been under investment in highways maintenance nationally for many years, but in recent years Wiltshire Council has been making a significant investment in improving the county's roads.

The Council's Policy and Strategy for highway infrastructure maintenance and renewal are contained in the documents below. An annual programme of surfacing and similar work is produced and reported to the Area Boards.

There has been a substantial improvement in the overall condition of the county's road network in the past decade, but it is appreciated there still roads in need of treatment and the need for further investment. The overall condition of Wiltshire's roads compares favourably with the national average and the south-west average road conditions.

Wiltshire Council has identified a resilient network. This comprises the key routes into and through the county, which generally carry the most traffic, and where long term unavailability would be likely to cause serious disruption. These routes are given special consideration in connection with maintenance works and infrastructure renewal.

Downloads

Highways Asset Management Documents

- [Wiltshire Council - Highways Asset Management Policy \[423.1KB\]](#)
- [Wiltshire Council - Highways Asset Management Strategy \[1.08MB\]](#)
- [Wiltshire Council - Highways Infrastructure Management Plan \[1.35MB\]](#)
- [Wiltshire highways resilient network \[2.08MB\]](#)
- [Wiltshire highways additional funding \[851.0KB\]](#)
- [Recent Highway Works - July 2020 \[15.3MB\]](#)
- [Recent Highway Works - August 2020 \[6.61MB\]](#)

Wiltshire Highway Maintenance Programme

- [Wiltshire Highway Maintenance Programme 2021-25 \[7.24MB\]](#)
- [Amesbury 2021-2025 \[2.33MB\]](#)
- [Bradford on Avon 2021-2025 \[1.8MB\]](#)
- [Calne 2021-2025 \[2.12MB\]](#)
- [Chippenham 2021-2025 \[2.75MB\]](#)
- [Corsham 2021-2025 \[1.59MB\]](#)
- [Devizes 2021-2025 \[1.99MB\]](#)
- [Malmesbury 2021-2025 \[2.21MB\]](#)
- [Marlborough 2021-2025 \[1.82MB\]](#)
- [Melksham 2021-2025 \[1.75MB\]](#)
- [Pewsey 2021-2025 \[2.15MB\]](#)
- [Royal Wootton Bassett & Cricklade 2021-2025 \[2.98MB\]](#)
- [Salisbury 2021-2025 \[2.66MB\]](#)
- [South West Wiltshire 2021-2025 \[2.63MB\]](#)
- [Southern Wiltshire 2021-2025 \[2.02MB\]](#)
- [Tidworth 2021-2025 \[1.68MB\]](#)
- [Trowbridge 2021-2025 \[2.41MB\]](#)
- [Warminster 2021-2025 \[2.26MB\]](#)
- [Westbury 2021-2025 \[2.07MB\]](#)

Downloads

Highways Asset Management Documents

- [Wiltshire Council - Highways Asset Management Policy \[423.1KB\]](#)
- [Wiltshire Council - Highways Asset Management Strategy \[1.08MB\]](#)
- [Wiltshire Council - Highways Infrastructure Management Plan \[1.35MB\]](#)
- [Wiltshire highways resilient network \[2.08MB\]](#)
- [Wiltshire highways additional funding \[851.0KB\]](#)
- [Recent Highway Works - July 2020 \[15.3MB\]](#)
- [Recent Highway Works - August 2020 \[6.61MB\]](#)
- [Recent Highway Works - September 2020 \[10.27MB\]](#)
- [Recent Highway Works - October 2020 \[10.09MB\]](#)
- [Recent Highway Works - November 2020 \[10.09MB\]](#)
- [Recent Highway Works - December 2020 \[8.22MB\]](#)
- [Recent Highway Works - January 2021 \[6.85MB\]](#)
- [Recent Highway Works - February 2021 \[11.41MB\]](#)
- [Recent Highway Works - March 2021 \[6.43MB\]](#)
- [Recent Highway Works - April 2021 \[4.21MB\]](#)



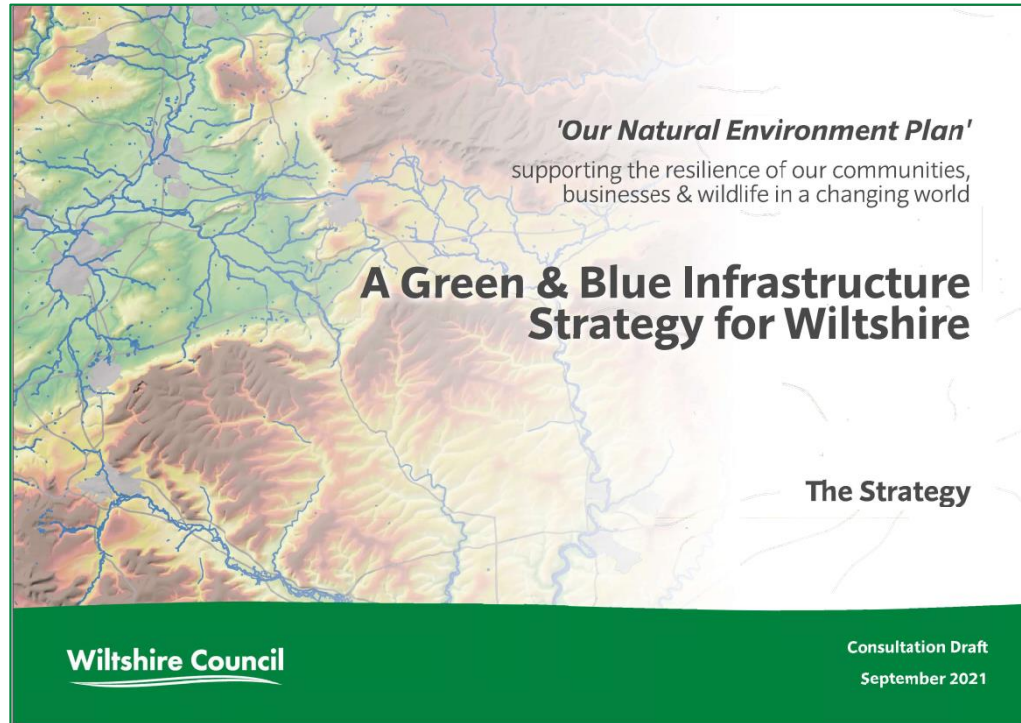
8) The Climate and Us - Stonehenge Community Area

- Stonehenge Area Board to hold a face-to-face event in October/November (when would be best) on Climate and our Environment, to include the following:
 - What the parishes can do – showing the way
 - Reducing food waste
 - Insulating houses
 - Renewable energy
 - Bio-diversity -
 - Green economy
- Stonehenge LYN – your future, your choice presentation
- Making it happen – co-ordinating existing groups
- Secure funding and deliver projects



Two strategies for Wiltshire (pages 99 - 100)

- Consultation 1 September to 17 October 2021



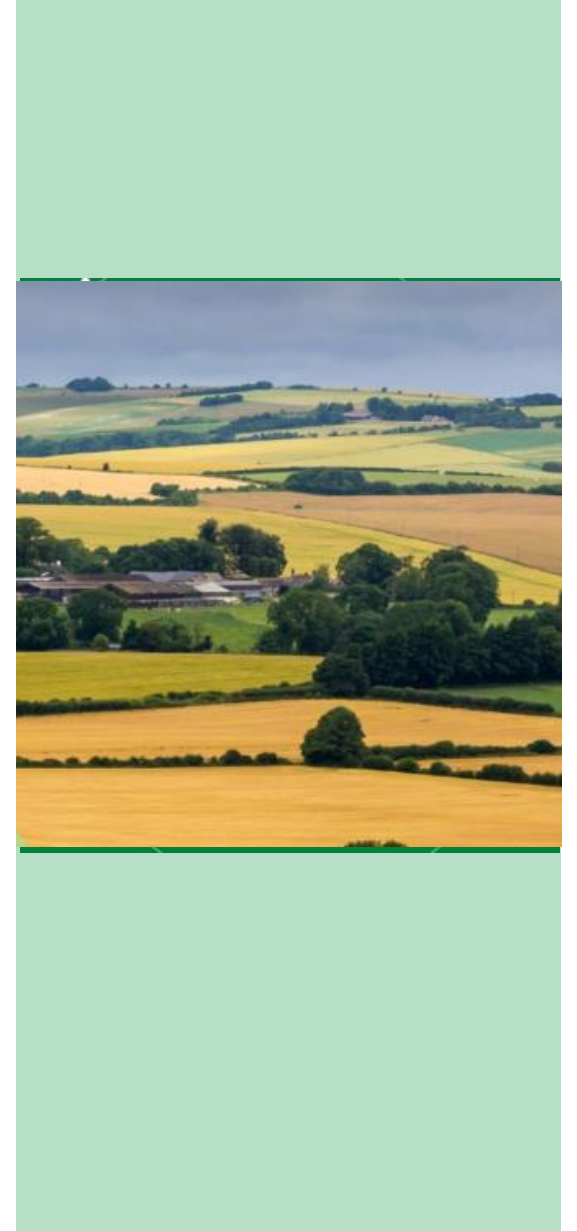
Climate Strategy Delivery Themes

- Transport
- Homes and the Built Environment
- Natural Environment, Food and Farming
- Energy
- Green Economy
- Waste
- Carbon Neutral Council



Green & Blue Infrastructure Strategy - Themes

- Flooding & Water Management
- Sustainable Farming & Land Management
- Nature Recovery & Landscape Management
- Woodland & Trees
- Healthy Living
- Economic Recovery & Valuing Natural Capital



Your Opportunities to Comment

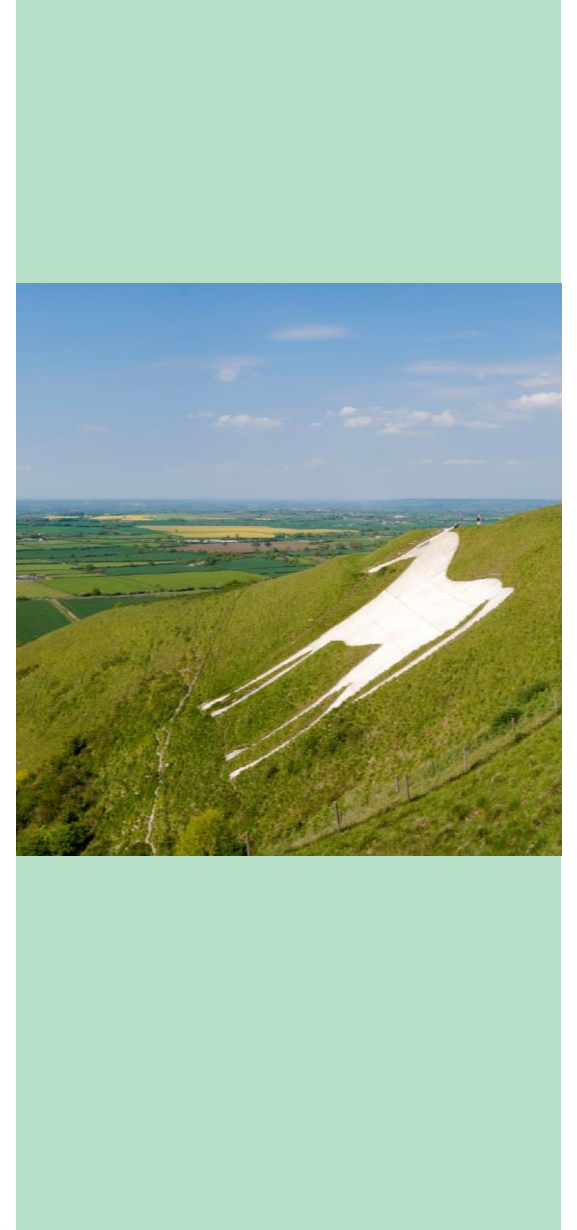
Webinars:

- 9 September, 6pm, with Claire Perry O'Neill - **Launch Event**
- 15 September, 10.30am-11.30am - **Webinar**
- 30 September, 7pm-8pm - **Webinar**

Library drop-in sessions:

- 14 September, 10am-midday - **Salisbury**
- 23 September, 10.00am-midday - **Devizes**
- 27 September, 10am-midday - **Chippenham**
- 7 October, 10am-midday - **Trowbridge**

Please complete the online survey – www.wiltshire.gov.uk/climate



9) Stonehenge Area Board Priorities

- **Mental Health** – across many groups young and old alike
- **Digital inclusion** – including equipment, broadband and knowledge – can affect young people too
- **Opportunities & Activities for young people**, includes positive activities & future training and employment
- **Climate Change / environment** – as discussed earlier in this meeting
- **Loneliness and isolation** – again, a wide range of people may be affected

Stonehenge Area Board Councillors are assigned to each of these areas and are working with the Community Engagement Manager

9) Tackling the priorities – a couple of highlights

- **Opportunities & Activities for young people** – re-established Local Youth Network, young people attending, working with Stonehenge and Avon Valley College to link into the Area Board Plus a new youth survey & a range of funded activities underway. Rural youth consultation ongoing, Katrina Watson - E: kwatson@communityfirst.org.uk
- **Loneliness and isolation / Mental Health** – Silver Salisbury & Amesbury programme of events – please check the online brochure or pick your copy up – so many opportunities to start getting out and about safely – meet old friends and make new friends
- Community garden, Paths4All, Celebrating Age, coffee mornings & drop ins re-establishing
- There is funding available for these priorities – check the criteria and apply or speak to Jacqui
- [Council Democracy Area Boards \(wiltshire.gov.uk\)](http://wiltshire.gov.uk)

10) Community Area Transport Group *(Cllr Graham Wright, pages 65 – 110)*



Meeting held 14 July 2021

10) Community Area Transport Group Cllr Graham Wright (pages 65 – 110)

Approve the top priorities and funding recommendations from the CATG:

- **1-19-11 Footpath that connects the upper back-way to the Methodists Church on the high street, Shrewton.**
 - Funding already approved, project ongoing.
- **1-20-15 Durrington 20mph speed limit assessment.**
 - Funding already approved, delayed due to COVID, ongoing.
- **1-21-3 London Road, Amesbury (bus shelter).** New top priority!
 - Funding recommendation of £4,950.00 to be approved
- **1-21-5 B3083 between A303 and Berwick St James.** New top priority!
 - Awaiting costings.

10) Community Area Transport Group Cllr Graham Wright (pages 65 – 110)

- **1-21-8 Redworth Drive, Amesbury.** New top priority!
 - Funding already approved, ongoing.
- **1-21-10, 11 and 12 C42 Woodford Valley – speeding and lack of footways.** New top priority!
 - Funding recommendation of £1,875.00 to be agreed for speed limit assessment
- **1-21-15 Shrewton, London Road –Traffic Calming.** New top priority!
 - Substantive funding bid for up to £12,500 to be approved

Date of Next meeting – 20 October 2021 at 10.00am on MS Teams

Reminder to Parishes to highlight their top priorities when submitting items to CATG

11) Paths 4 All Initiative – Cllr Ian Blair-Pilling

- ✓ £5,000 available from Stonehenge Area Board
- ✓ Funding also available for Tidworth and Pewsey area
- ✓ Streamlined easy process – invoice & receipts
- ✓ Flexibility in type of project - equipment, gates, benches, maps, flyers, meetings, circular routes, clearing – you choose!
- ✓ Talk to Ian and Jacqui about your ideas and get walking
- ✓ Steering group to meet every quarter – next catch up in December



12) Local Youth Network *(pages 149 – 150)*

Update from Cllr Mark Verbinnen

- Local Youth Network meeting 2 September
- Young people in attendance
- New Youth Survey underway
- Stonehenge and Avon Valley College youth council link to Area Board
- Climate - your future, your choice – work with young people to increase the message about climate change and get them involved
- Rural Youth project – consultation identifying gaps and opportunities

13) Update from the Health and Wellbeing group, Cllr Dr Monica Devendran *(pages 151 – 152)*



- Health and Wellbeing event 21st September
Evergreen Court
- Addison Square, Durrington 1.30 – 2.30
- Parsons Green, Shrewton 3.15 – 4.15 27th Sep
- Langford Lakes event 29th September
- Silver Salisbury & Amesbury programme of events
(don't forget the community garden open day on Saturday!)
- Next Health and Wellbeing meeting Friday 26th
November 11am online – all welcome
- 2 grant requests this time:

13) Update from the Health and Wellbeing group, Cllr Dr Monica Devendran *(pages 151- 152)*



HWB Grants

To consider the following applications for HWB funding:

- Silver Salisbury Group, £500.00 towards the Silver Sunday in Amesbury.
- Wiltshire Music Centre, £1,500.00 towards their Celebrating Age Wiltshire project.

Grants for Local Groups



Wiltshire Council

14) Grants for Local Groups *(pages 153 - 166) Cllr Ian Blair-Piling*

To **consider** the following Community Area Grant applications:

- Wessex Futsal Club, £600.00 towards Wessex Futsal Club Goals.
- Berwick St James Reading Room, £4,250.00 towards Berwick St James Reading Room Thatched Roof.
- Amesbury Town Council, £1,790.00 towards the purchase of Speed Indicator Devices (SIDS) for the Town

To **note** the following grant already awarded under the delegated authority of the CEM.

- Area Board, Cllr Led Initiative, £5,000.00 towards Stonehenge Area Board Paths 4 All.

Open Floor

- New initiatives for ongoing AB business meetings (next meeting 16 December) and our monthly clinic
 - Jacqui.abbott@wiltshire.gov.uk
- Next clinic on 4 October
- Climate meeting in October/November



Next meeting

16 December 2021 at 6.30pm – venue TBC



Wiltshire Council