

Partners in Excellence

NHS Foundation Trust Consultation



Outline

- Introduction to the Consultation and Foundation Trusts
- Outline of our Proposals
- How to give your views
- We want to ask questions at end of presentation

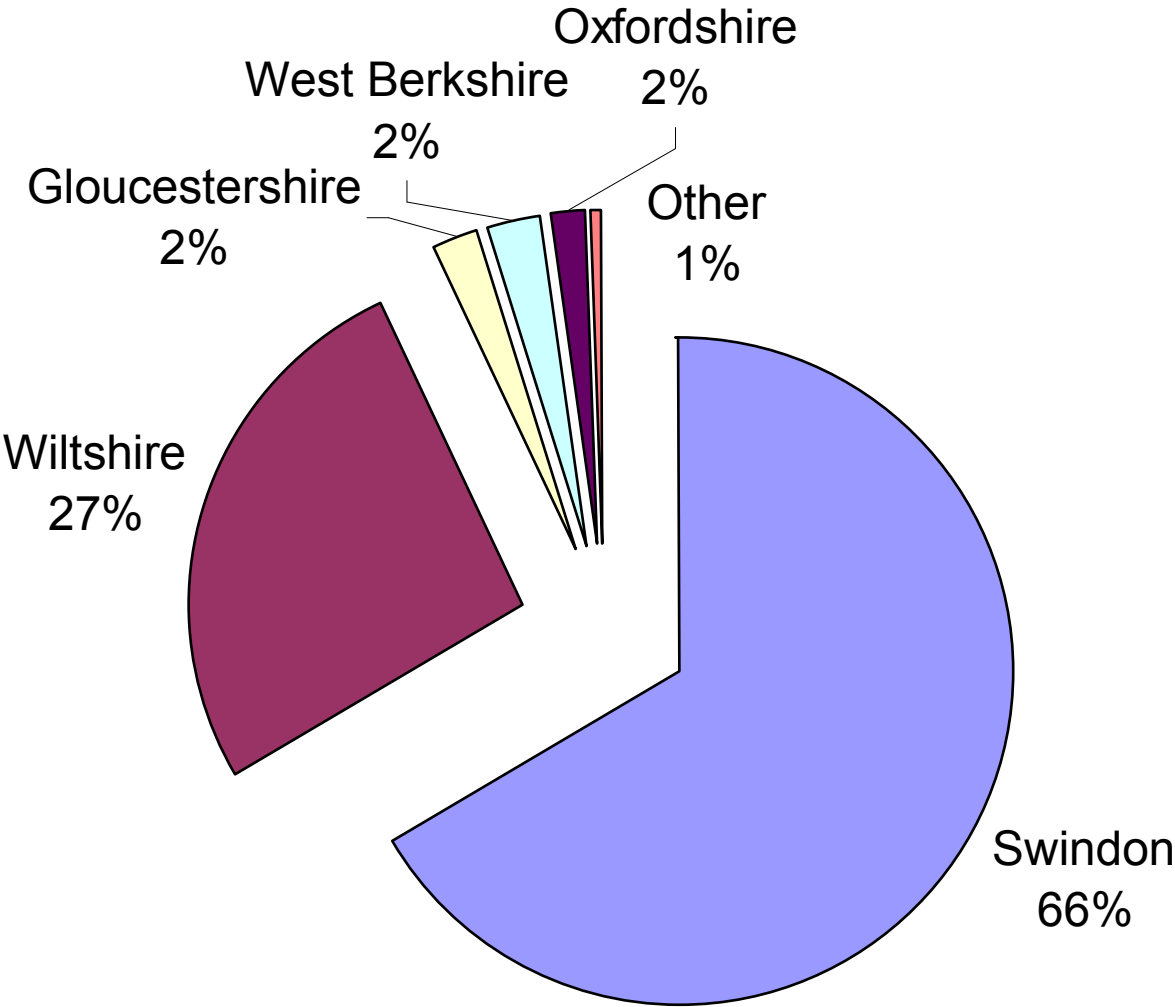


About our Trust

- Great Western Hospital
- Brunel NHS Treatment Centre
- Marlborough House (CAAMHs)
- Savernake
- Fairford & Devizes (outpatient clinics)
- Serves a population of 340,000
- 3,100 staff
- £160 million turnover



Percentage Income by PCT (2006/07)



What is this Consultation about?

- We are applying to become an NHS Foundation Trust (created under the Health and Social Care Act 2003)
- We are asking staff, local people, patients, carers and key people with who we work, for their views on our application to become a Foundation Trust



The Consultation

- 9 July – 29 September
- Views and suggestions on:
 - Our strategic direction as an FT
 - How the Trust will operate
 - A new name for our organisation
- Not a vote on whether we become a Foundation Trust
- *See page 18 of Consultation Document*



What is a Foundation Trust?

- New type of organisation
- Fully part of the NHS
- Controlled locally, not nationally
- Still have to deliver national targets
- Given greater freedom to run own affairs



So what will be different?

- We will be directly accountable to our local population
- Greater focus on meeting local needs, the needs of our communities
- Through membership and governors

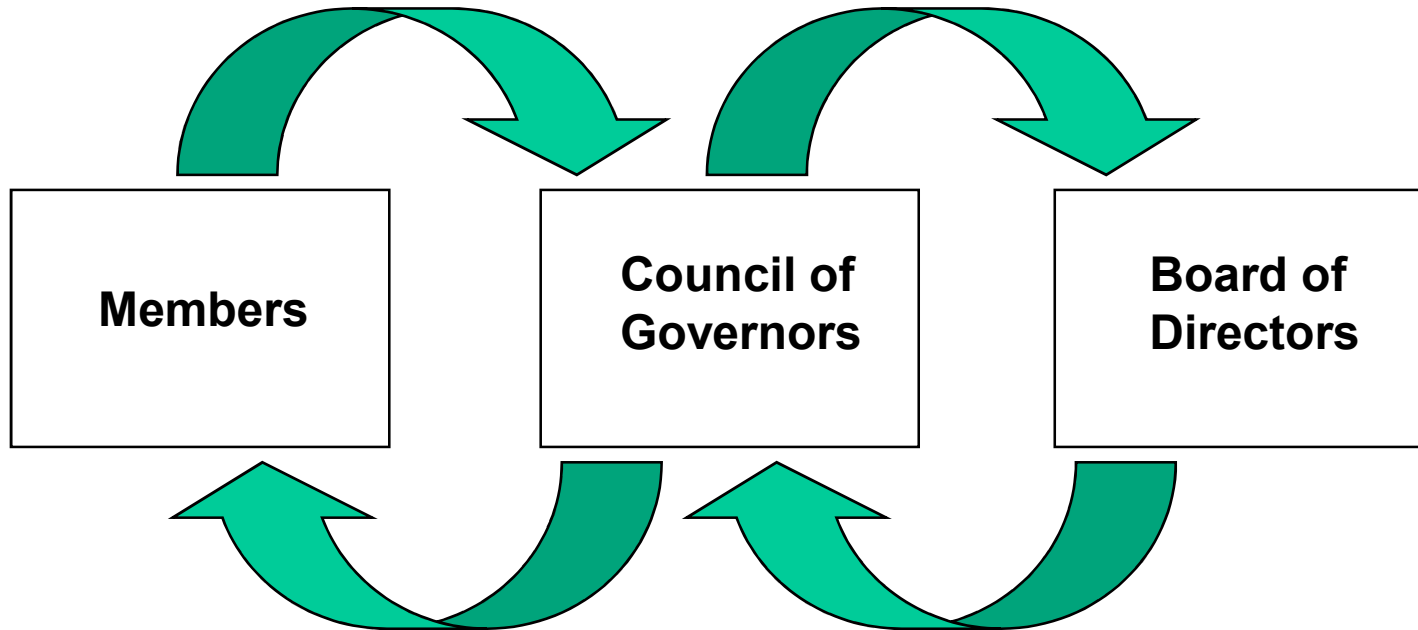


How it will work...

- A membership made up of staff, volunteers and local people
- A Council of Governors (majority elected by our members)
- A board of Directors made up of a Chair, Non-Executive and Executive Directors



How it will work



Members

- Vote for Governors to represent them
- Stand for election as Governors
- Be consulted about our future plans
- Contribute views and ideas
- Regular communication
- No charge to be a member



Membership – Our proposal

- Public *Age 12 above*
 - Swindon
 - Wiltshire
 - Gloucestershire, Oxfordshire and West Berkshire
- Staff
 - All Trust Staff, Volunteers and Carillion Health Staff



Governors

- Reflect the views of our community and members
- Give views of the members on Trust strategy
- Appoint or remove the Chair and Non-Executive Directors
- Approve appointment of Chief Executive
- Determine remuneration of Non Executive Directors
- 3 Year Term / re-elected for a maximum of 2 terms



Council of Governors- Our Proposal

- 10 public Governors (elected)
- 3 staff Governors (elected)
- 2 PCT Governors (nominated)
 - 1 Swindon, 1 Wiltshire
- 2 local authority Governors (nominated)
 - 1 Swindon, 1 Wiltshire
- 2 partnership Governors (nominated)
 - Swindon & North Wilts Health and Social Care Academy
 - Thames Valley Chamber of Commerce



Our Vision for the Future

Our Aim

- To be the best performing Hospital in England, providing the highest quality of service to our local population and so be their hospital of first choice



Our 4 Strategic Objectives

- Improve satisfaction and confidence in our services
- Continue to be local healthcare provider of choice for people in Swindon
- Increase the numbers of patients choosing our services from Wiltshire, Oxfordshire, Berkshire and Gloucester
- Respond to increased competition and work with communities to provide more care near home



Our Name

Swindon and Marlborough NHS
Foundation Trust

OR

Great Western NHS Foundation Trust



The Benefits....

- Stronger involvement with the local community
- Staff have a greater say and greater ownership
- A patient focussed culture
- More in control of own destiny – able to respond faster



The Risks

- Increased responsibilities for Trust Board (e.g. financial viability)
- What will our members expect of us and can we deliver?



How to tell us your views..

- Use reply form in Consultation Document
- Give views at Public Meetings
- E-mail
 - foundationtrust@smnhst.nhs.uk
- Website
 - www.swindon-marlborough.nhs.uk



Consultation Questions (1)

1. Do you agree with our aims, promise and values?
2. Do you agree with our Strategic Objectives?
3. What one thing would you like to see us achieve within our first 3 years as a Foundation Trust?



Consultation Questions (2)

4. Do you agree with the proposed geographical areas for public membership?
5. Do you agree with our proposed age limit of 12 for public membership?
6. Do you think our proposals for staff membership are the right ones – especially with respect to all our staff automatically becoming members?



Consultation Questions (3)

7. Do you agree with our proposals for our Council of Governors?
8. Do you think we have the right number of governors for each community and group?
9. Do you agree with our proposed arrangements for the Board of Directors?



Consultation Questions (4)

10. We have to change our name, should we become:

Swindon and Marlborough NHS
Foundation Trust

Or

Great Western NHS Foundation Trust?

11. In your opinion, what is the best way for us to recruit and retain members?

