

Atkins Highways & Transportation
260 Aztec West
Park Avenue
Almondsbury
Bristol BS32 4SY
England

Your Ref:
Our Ref: BW5024/TED/1891/20/DMH/DEM/48715

Telephone +44 (0)1454 617617
Fax +44 (0)1454 618844

transportation@atkinsglobal.com
www.atkinsglobal.com/transportation

Ext No: 288630

Wiltshire County Council
Planning Development Control
County Hall
Bythesea Road
Trowbridge
Wiltshire
BA14 8JN

For the attention of Geoff Winslow

Dear Sir

**AREA 2 TRUNK ROADS AND MOTORWAYS MAINTENANCE AGENCY
A36 BRICKWORTH – S278 NEW ACCESS TO MOOR FARM**


We have been requested by Ben Arnold of Robert Long Consultancy to inform you of the likely timescale for completing the highways work at this site.

Substantial completion of the works is programmed for 30 October 2002 but clearly this will depend on actual progress achieved, which will in turn depend upon a number of factors such as weather, ground conditions etc. At the progress meeting of 4 October the work was slightly ahead of programme and most of the elements of work that would be likely to cause any delays are completed. It is therefore fair to say that, at this stage, all indications are that substantial completion could be achieved by the programmed date.

Since substantial completion is a contractual term which varies depending on the nature of the work it is worth highlighting what we consider it to be for this scheme. We would consider that the works are substantially complete once all permanent works are in place and the road can be safely trafficked by the travelling public. The carriageway surfacing and installation of the permanent traffic signals are therefore the last activities that would need to be completed in this instance. However, the roadmarkings and high friction surfacing are weather dependant activities and it is possible that these will not be completed by the 30 October. Since the operation of the new traffic signals depends on the road layout being defined by the roadmarkings then the junction will have to operate under temporary signals until this work is completed.

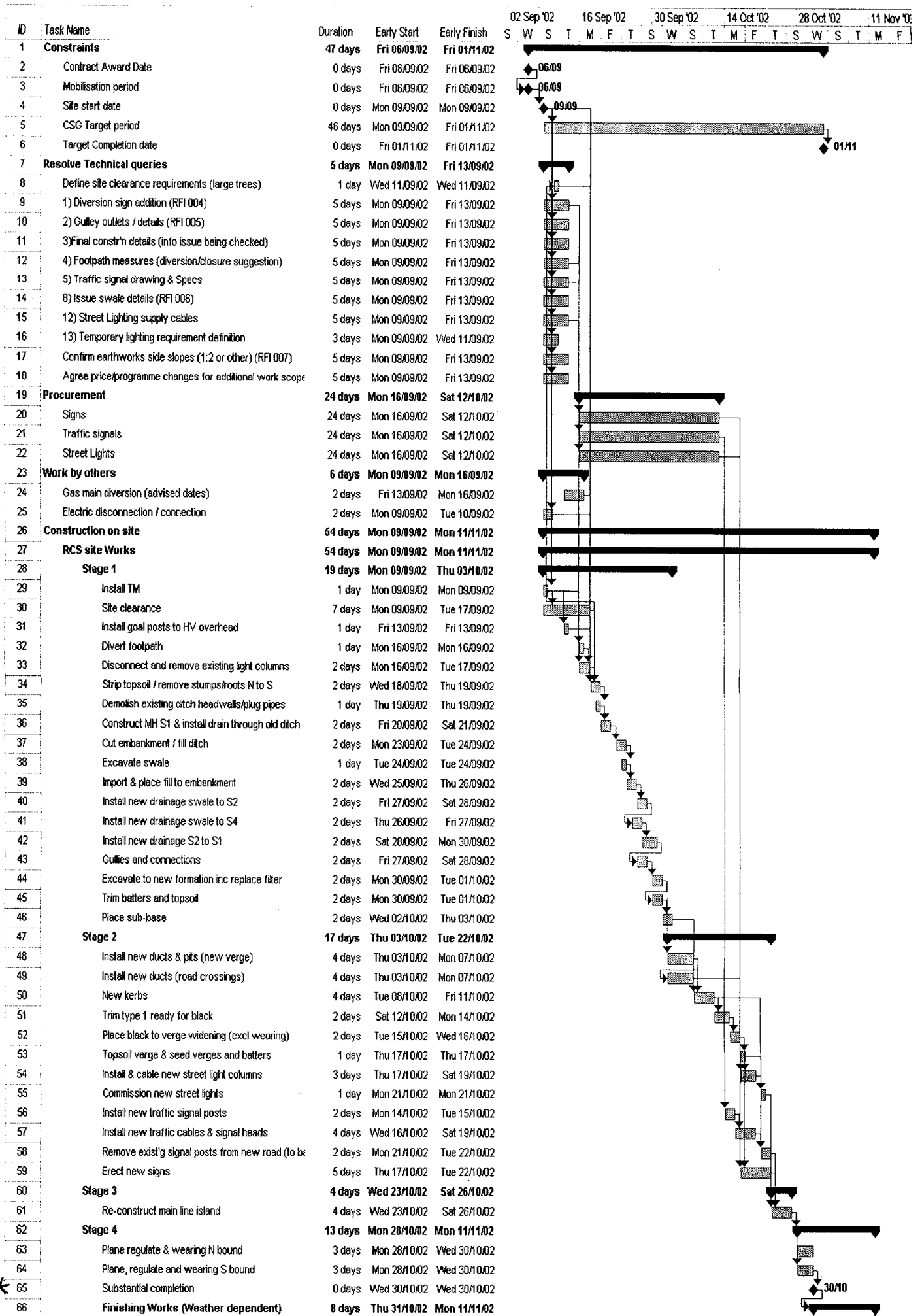
If you have any further queries regarding this scheme please do not hesitate to contact Dean Malson or the undersigned at this office.

Yours faithfully
for and on behalf of
Atkins Highways and Transportation



D M Hogan, Senior Engineer

Environmental Services Dept.			
13 OCT 2002		Ack.	
GC	2	3	4
	5	7	11



Atkins Highways & Transportation
260 Aztec West
Park Avenue
Almondsbury
Bristol BS32 4SY
England

Your Ref:
Our Ref: BW5024/TED/1891/20/DMH/DEM/48715

Telephone +44 (0)1454 617617
Fax +44 (0)1454 618844

transportation@atkinsglobal.com
www.atkinsglobal.com/transportation

Ext No: 288630

Wiltshire County Council
Planning Development Control
County Hall
Bythesea Road
Trowbridge
Wiltshire
BA14 8JN

For the attention of Geoff Winslow

Dear Sir

**AREA 2 TRUNK ROADS AND MOTORWAYS MAINTENANCE AGENCY
A36 BRICKWORTH – S278 NEW ACCESS TO MOOR FARM**

We have been requested by Ben Arnold of Robert Long Consultancy to inform you of the likely timescale for completing the highways work at this site.

Substantial completion of the works is programmed for 30 October 2002 but clearly this will depend on actual progress achieved, which will in turn depend upon a number of factors such as weather, ground conditions etc. At the progress meeting of 4 October the work was slightly ahead of programme and most of the elements of work that would be likely to cause any delays are completed. It is therefore fair to say that, at this stage, all indications are that substantial completion could be achieved by the programmed date.

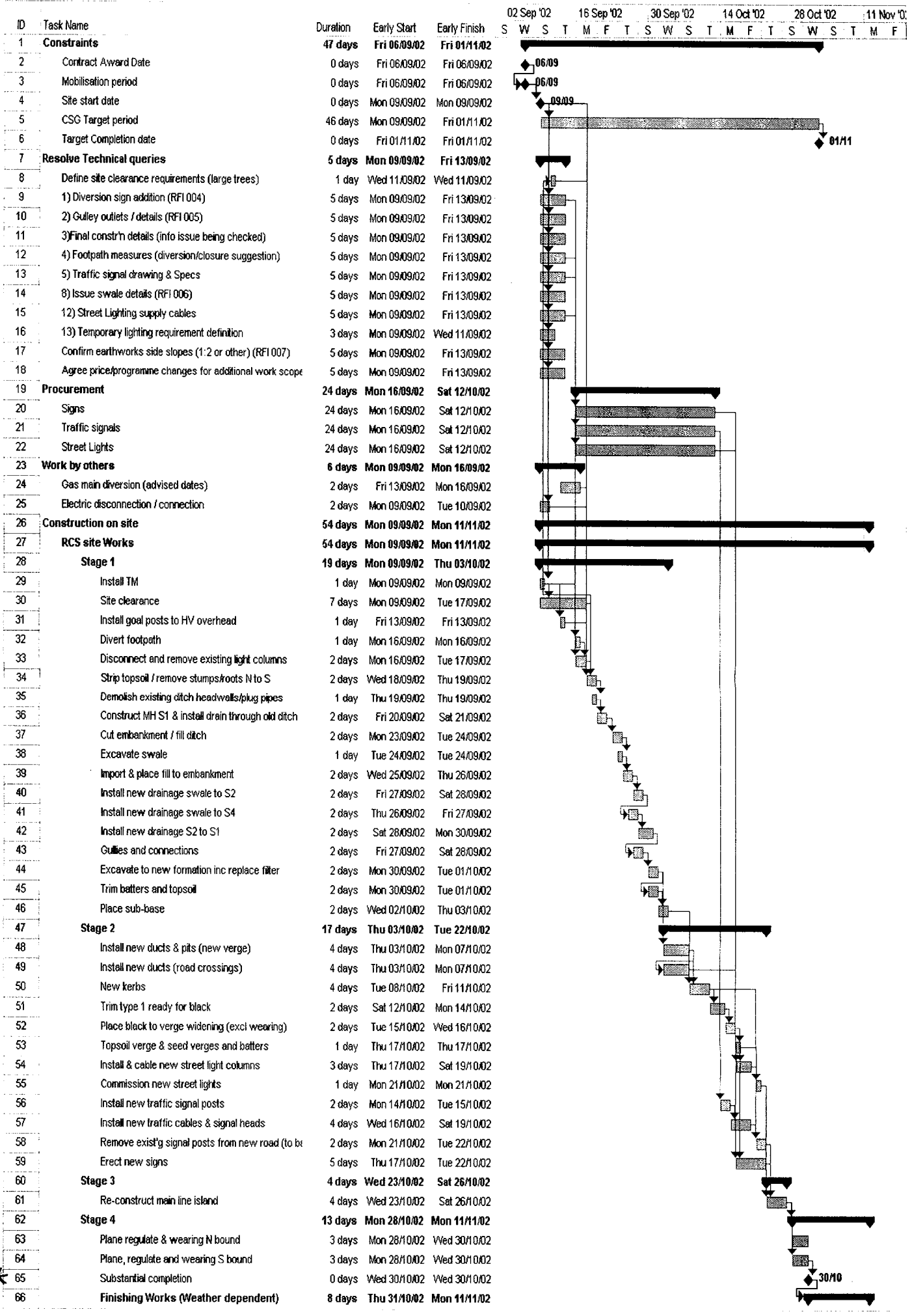
Since substantial completion is a contractual term which varies depending on the nature of the work it is worth highlighting what we consider it to be for this scheme. We would consider that the works are substantially complete once all permanent works are in place and the road can be safely trafficked by the travelling public. The carriageway surfacing and installation of the permanent traffic signals are therefore the last activities that would need to be completed in this instance. However, the roadmarkings and high friction surfacing are weather dependant activities and it is possible that these will not be completed by the 30 October. Since the operation of the new traffic signals depends on the road layout being defined by the roadmarkings then the junction will have to operate under temporary signals until this work is completed.

If you have any further queries regarding this scheme please do not hesitate to contact Dean Malson or the undersigned at this office.

Yours faithfully
for and on behalf of
Atkins Highways and Transportation


D M Hogan, Senior Engineer

Environmental Services Dept.			
18 OCT 2002			Ack.
GC	2	3	4
	6	7	8



Your Ref:
Our Ref: BW5024/TED/1891/20/DMH/DEM/48715

Telephone +44 (0)1454 617617
Fax +44 (0)1454 618844

transportation@atkinsglobal.com
www.atkinsglobal.com/transportation

Ext No: 288630

Wiltshire County Council
Planning Development Control
County Hall
Bythesea Road
Trowbridge
Wiltshire
BA14 8JN

For the attention of Geoff Winslow

Dear Sir

**AREA 2 TRUNK ROADS AND MOTORWAYS MAINTENANCE AGENCY
A36 BRICKWORTH – S278 NEW ACCESS TO MOOR FARM**

We have been requested by Ben Arnold of Robert Long Consultancy to inform you of the likely timescale for completing the highways work at this site.

Substantial completion of the works is programmed for 30 October 2002 but clearly this will depend on actual progress achieved, which will in turn depend upon a number of factors such as weather, ground conditions etc. At the progress meeting of 4 October the work was slightly ahead of programme and most of the elements of work that would be likely to cause any delays are completed. It is therefore fair to say that, at this stage, all indications are that substantial completion could be achieved by the programmed date.

Since substantial completion is a contractual term which varies depending on the nature of the work it is worth highlighting what we consider it to be for this scheme. We would consider that the works are substantially complete once all permanent works are in place and the road can be safely trafficked by the travelling public. The carriageway surfacing and installation of the permanent traffic signals are therefore the last activities that would need to be completed in this instance. However, the roadmarkings and high friction surfacing are weather dependant activities and it is possible that these will not be completed by the 30 October. Since the operation of the new traffic signals depends on the road layout being defined by the roadmarkings then the junction will have to operate under temporary signals until this work is completed.

If you have any further queries regarding this scheme please do not hesitate to contact Dean Malson or the undersigned at this office.

Yours faithfully
for and on behalf of
Atkins Highways and Transportation


D M Hogan, Senior Engineer

Environmental Services Dept.			
18 OCT 2002			Ack.
GC	2	3	4
	5	7	8

Your Ref:
Our Ref: BW5024/TED/1891/20/DMH/DEM/48715

Telephone +44 (0)1454 617617
Fax +44 (0)1454 618844

transportation@atkinsglobal.com
www.atkinsglobal.com/transportation

Ext No: 288630

Wiltshire County Council
Planning Development Control
County Hall
Bythesea Road
Trowbridge
Wiltshire
BA14 8JN

For the attention of Geoff Winslow

Dear Sir

**AREA 2 TRUNK ROADS AND MOTORWAYS MAINTENANCE AGENCY
A36 BRICKWORTH – S278 NEW ACCESS TO MOOR FARM**

We have been requested by Ben Arnold of Robert Long Consultancy to inform you of the likely timescale for completing the highways work at this site.

Substantial completion of the works is programmed for 30 October 2002 but clearly this will depend on actual progress achieved, which will in turn depend upon a number of factors such as weather, ground conditions etc. At the progress meeting of 4 October the work was slightly ahead of programme and most of the elements of work that would be likely to cause any delays are completed. It is therefore fair to say that, at this stage, all indications are that substantial completion could be achieved by the programmed date.

Since substantial completion is a contractual term which varies depending on the nature of the work it is worth highlighting what we consider it to be for this scheme. We would consider that the works are substantially complete once all permanent works are in place and the road can be safely trafficked by the travelling public. The carriageway surfacing and installation of the permanent traffic signals are therefore the last activities that would need to be completed in this instance. However, the roadmarkings and high friction surfacing are weather dependant activities and it is possible that these will not be completed by the 30 October. Since the operation of the new traffic signals depends on the road layout being defined by the roadmarkings then the junction will have to operate under temporary signals until this work is completed.

If you have any further queries regarding this scheme please do not hesitate to contact Dean Malson or the undersigned at this office.

Yours faithfully
for and on behalf of
Atkins Highways and Transportation


D M Hogan, Senior Engineer

Environmental Services Dept.			
18 OCT 2002			Ack.
<i>GC</i>	2	3	4
	5	7	8