

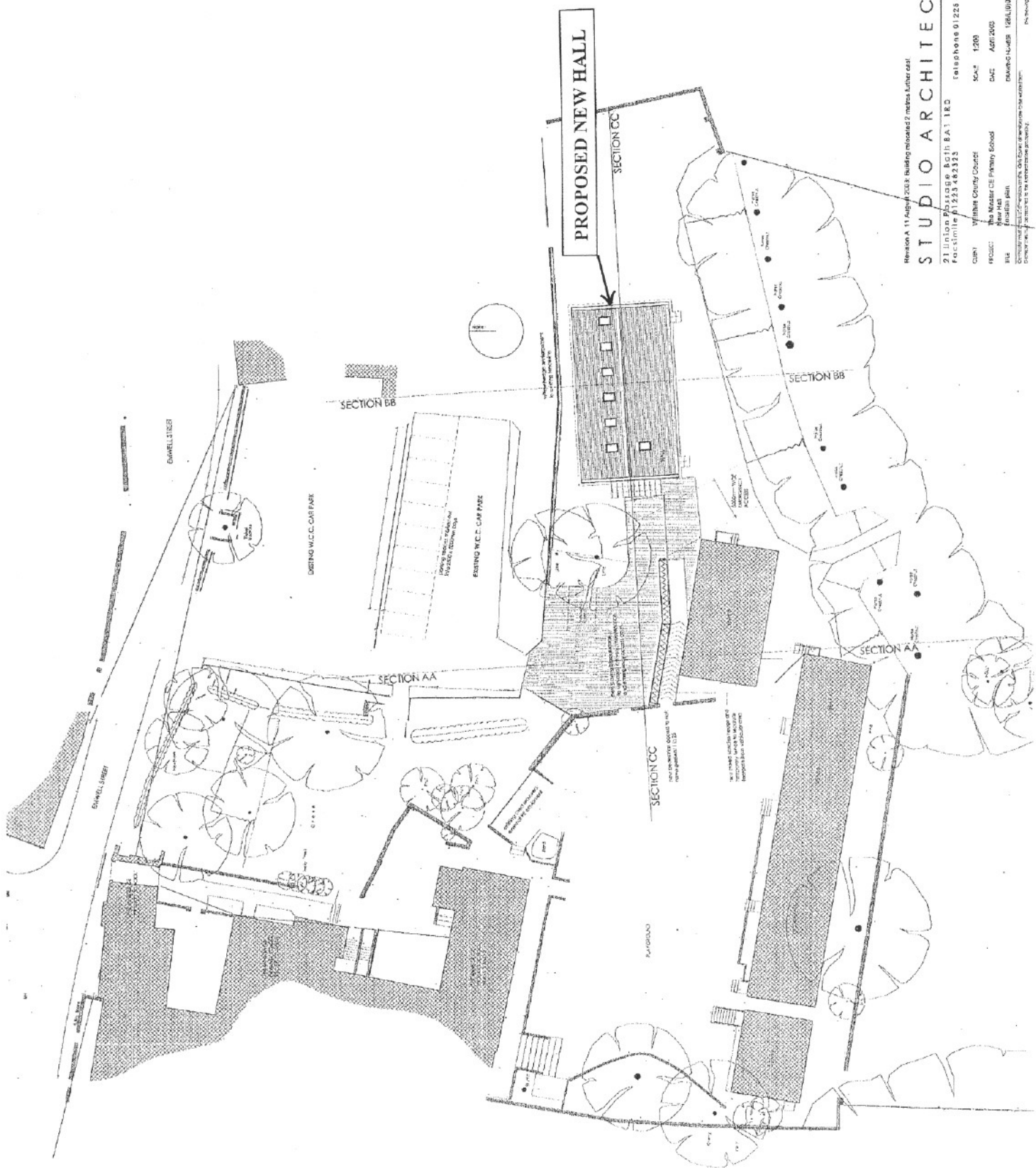
<b>REGULATORY COMMITTEE</b>	<b>DATE</b> 12 <sup>th</sup> NOVEMBER 2003
<b>PLANNING APPLICATION</b> W.03.1086.CP	<b>SITE LOCATION</b> WARMINSTER
Reproduced from the Ordnance Survey Map with the permission of The Controller of H.M. Stationery Office Crown Copyright reserved. LA 076910	<b>WILTSHIRE COUNTY COUNCIL</b> Director of Environmental Services County Hall Trowbridge Wiltshire BA14 8JD
<b>SCALE:</b> 1:1250	

**STUDIO ARCHITECTS**

Revision A 11 April 2003 Building released 2 metres later east.

21 Union Passage 80th BA1 TRD Telephone 01 228 402 024  
 Fax 01 228 482 975

Client: Wiltshire County Council  
 Project: New Master CE Primary School  
 Site: Eastfield Hill  
 Drawing Number: 108A/01/02A  
 Scale: 1:200  
 Date: April 2003  
 Drawn by: [Name]  
 Checked by: [Name]



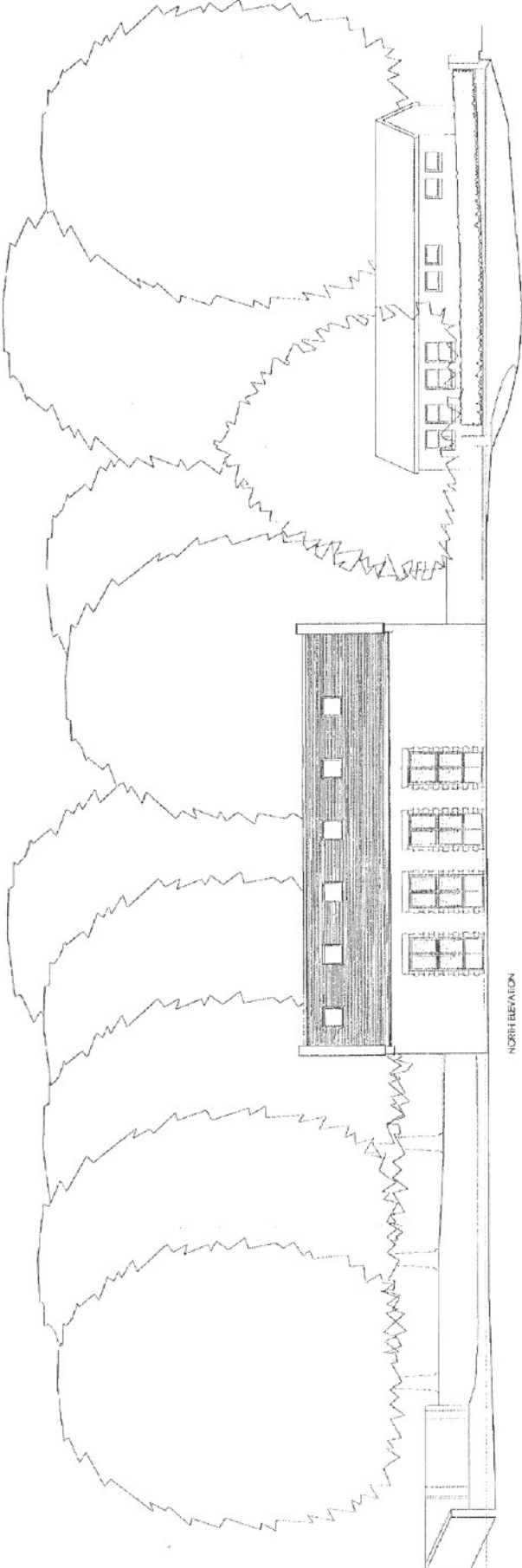
108A/01/02A

108A/01/02A

108A/01/02A

108A/01/02A

108A/01/02A



SCHEDULE OF ACCOMMODATIONS:		sq. metres
HALL		14022
STORE		1474
WC		470
ACCESSIBLE WC		328
EXTERNAL STORE		428
CIRCULATION		1041
TOTAL		18143
AREA WITHIN EXTERNAL WALLS		
TOTAL		18143

**SCHEDULE OF INTERNAL MATERIALS:**

**Walls:**  
Approved solid brick to match school building with recessed brickwork to window and door openings, coping and freestone on top.

**Roof:**  
Plywater powder-coated aluminium colour steel gable.

**Internal doors:**  
Approved solid wood, painted and polished.

**External doors:**  
Approved solid wood, painted and polished.

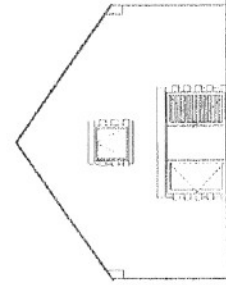
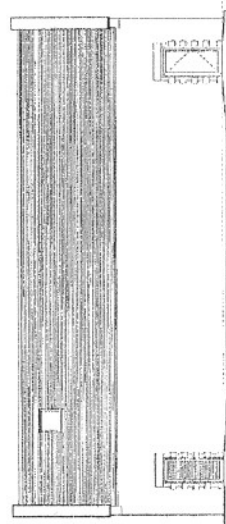
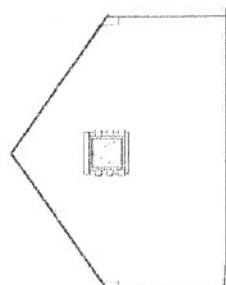
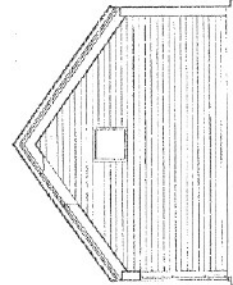
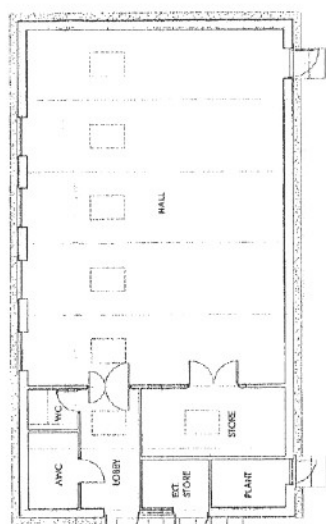
**Windows:**  
Approved solid wood, painted and polished.

**Roof:**  
Plywater powder-coated aluminium colour steel gable.

**Roof:**  
Approved solid brick to match school building with recessed brickwork to window and door openings, coping and freestone on top.

**Roof:**  
Approved solid brick to match school building with recessed brickwork to window and door openings, coping and freestone on top.

**Roof:**  
Approved solid brick to match school building with recessed brickwork to window and door openings, coping and freestone on top.



**STUDIO ARCHITECTS**

21 UNION PASSAGE, 801H BA 1 1RD  
 Phone 01223 482423 Fax 01223 482423

**FAST ELEVATION**

Client: Wiltshire County Council  
 Date: 11/08  
 Project: The Minder CE Primary School  
 Location: New Hill  
 Revision: 1261 (06/08)

Revision A 11 August 2003 Building No. 0227 more tower east.

© Studio Architects 2003