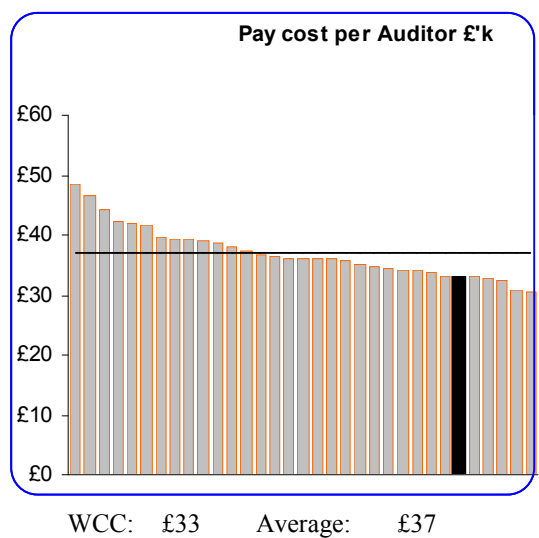
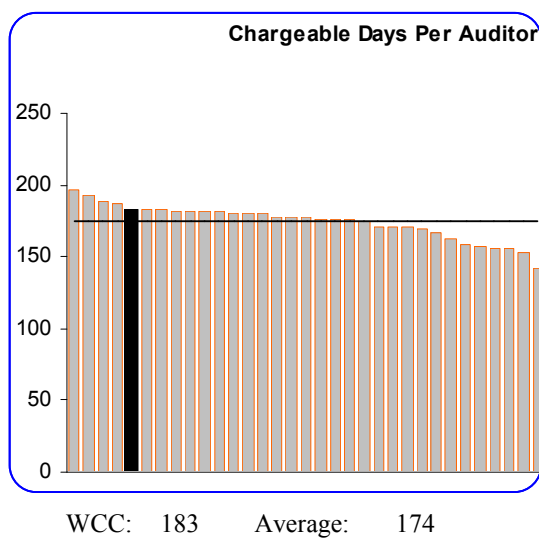
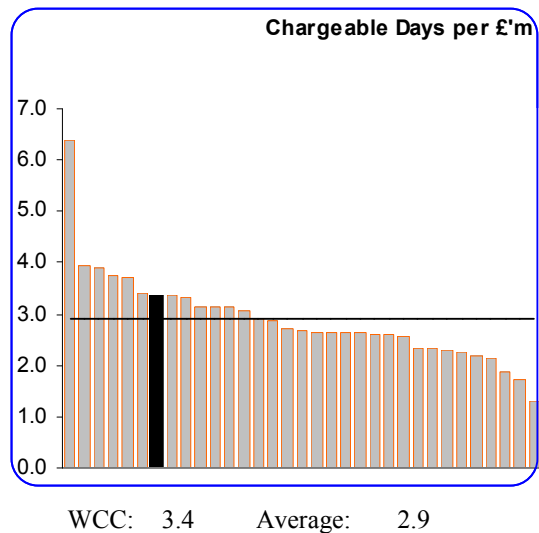
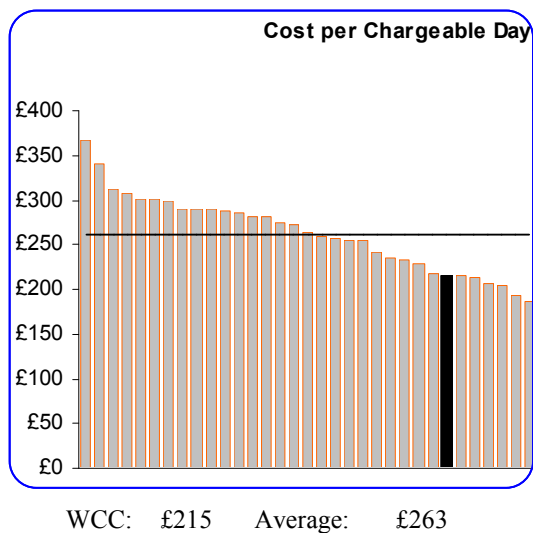
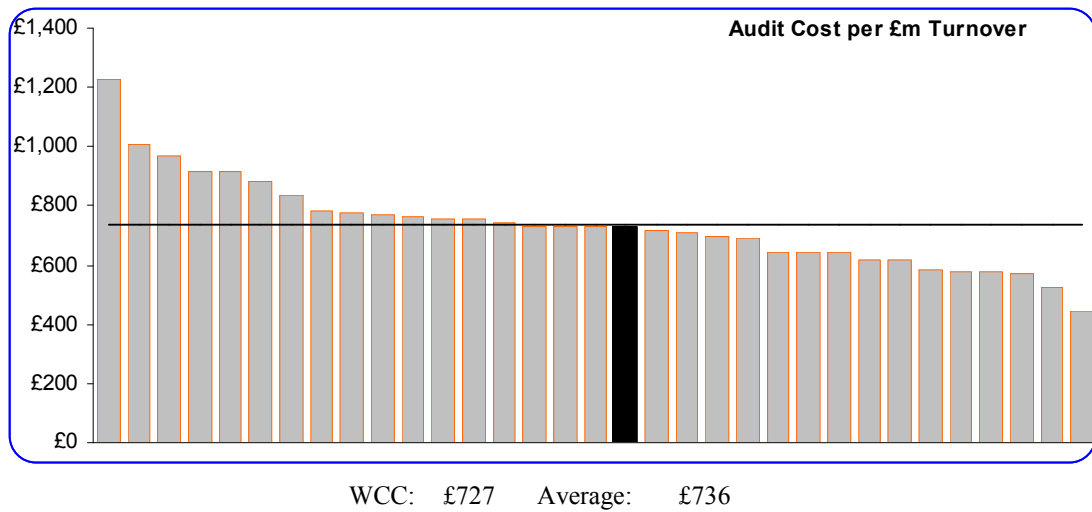
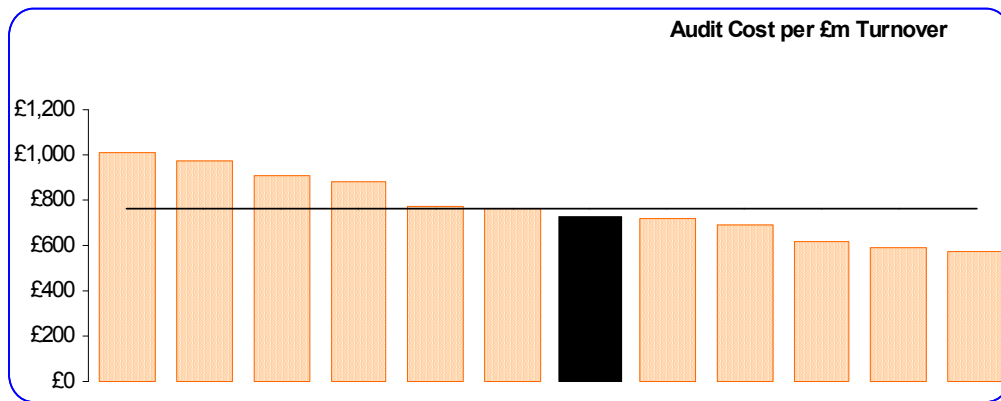


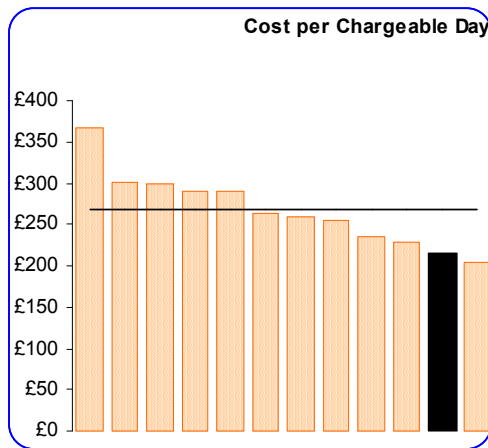
## Appendix A – WCC Compared With All English Counties



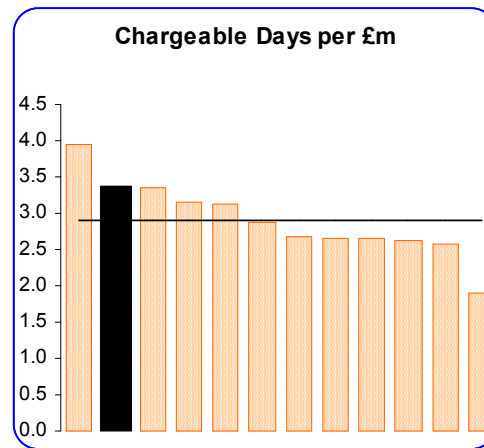
## Appendix B – WCC Compared With Selected\* English Counties



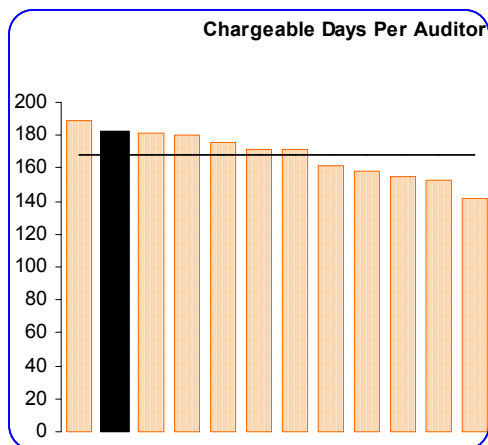
WCC: £727    Average: £768



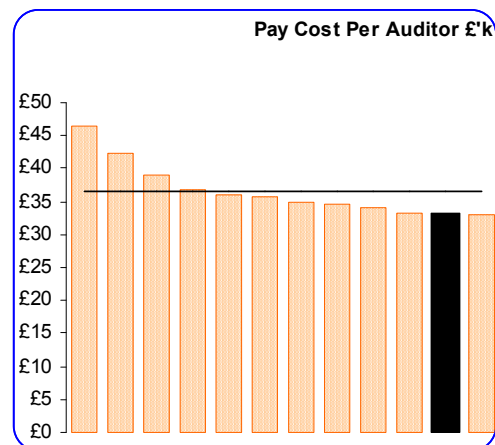
WCC: £215    Average: £267



WCC: 3.4    Average: 2.9



WCC: 183    Average: 169



WCC: £33    Average: £37

\*Selected Counties: Bedfordshire  
Dorset  
Gloucestershire  
Somerset  
Cornwall  
Durham County  
Northumberland  
(Wiltshire)  
Devon  
East Sussex  
Oxfordshire  
Worcestershire

## Appendix C – WCC Compared With All English Counties (Timeseries)

