

**FINAL ACCOUNTS AND AUDIT COMMITTEE**  
**13 December 2007**

---

**INTERNAL AUDIT BENCHMARKING**

**Purpose of the Report**

1. To present the Committee with benchmarking information for Internal Audit and explain the position of the Wiltshire County Council (WCC) Internal Audit Team relative to English counties as a whole and to a smaller group of counties with similar characteristics.

**Background**

2. Since 2000, the Internal Audit Team has been part of the CIPFA Audit Benchmarking Club. The Club has for several years provided comparative information on unit costs, audit days, staffing levels. This report presents a sample of the latest available benchmarking information, based on 2006-07 actual outturn figures and also compares trends over the past six years.

**Main Considerations for the Committee**

3. Appendix A shows Internal Audit's position compared to all other English County Councils. Particular points to note are as follows:
  - That the cost of WCC Internal Audit Team is below the county average as a proportion of overall revenue spending and that the cost per chargeable day and pay cost per auditor are significantly lower than average.
  - That productive audit days are above average in relation to revenue spending, although below the average in terms of days per auditor (due to unusually high sickness in 2006-07).
4. Appendix B compares the Internal Audit Team with a smaller group of counties with characteristics more similar to Wiltshire. Within this group the Internal Audit Team's costs are further below the average, whilst chargeable days per auditor are above average.

5. Appendix C presents the trend for Internal Audit over the past six years, compared with the national picture. This shows that over the period costs have continued to reduce in all areas compared to the national average, particularly in the areas of cost per £m turnover and cost per auditor. This reduction has been most marked over the past three years from 2004-05 to date.

### **Environmental Impact of the Proposal**

6. No environmental impact arises from issues raised in this report.

### **Financial Implications**

7. There are no additional costs arising from these proposals. However the data does present positive evidence of the current value for money provided by the Internal Audit Team.

### **Reasons for the Proposal**

8. To present the Committee with benchmarking information for the WCC Internal Audit Team. To explain the position of the Internal Audit Team in relation to English counties as a whole and to a smaller group of counties with similar characteristics.

### **Proposal**

9. The Final Accounts and Audit Committee is asked to note the benchmarking information for the WCC Internal Audit Team and its position relative to the other English counties, specifically:
  - That for 2006-07 the Internal Audit Team's costs were significantly below the average, whilst productive audit days fell below the national average for the first time, due to unusually high sickness.
  - That over the past several years the Internal Audit Team's costs have continued to reduce in comparison to the national average.
10. The Committee is also asked to note that updated benchmarking information will be presented to future meetings as it becomes available.

**Sandra Schofield**  
**Chief Financial Officer**

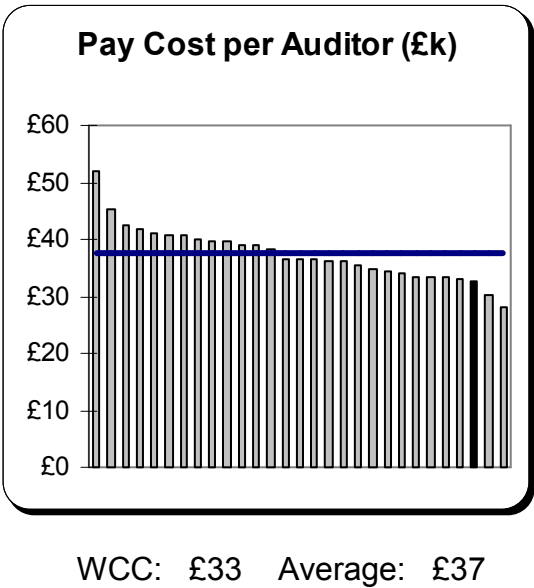
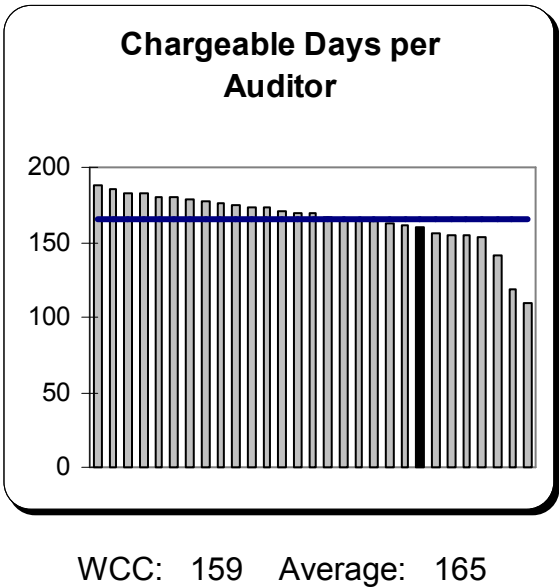
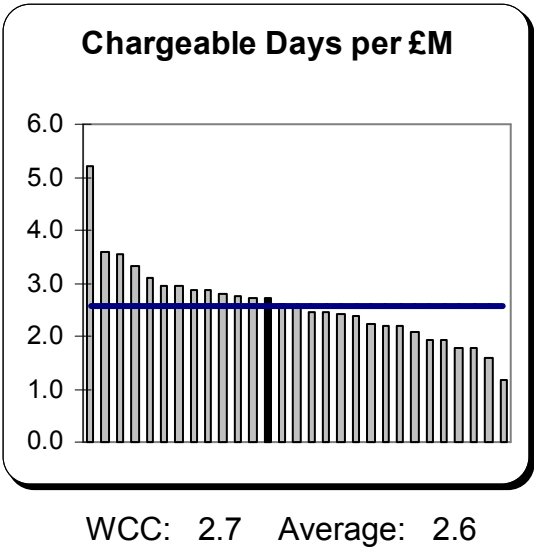
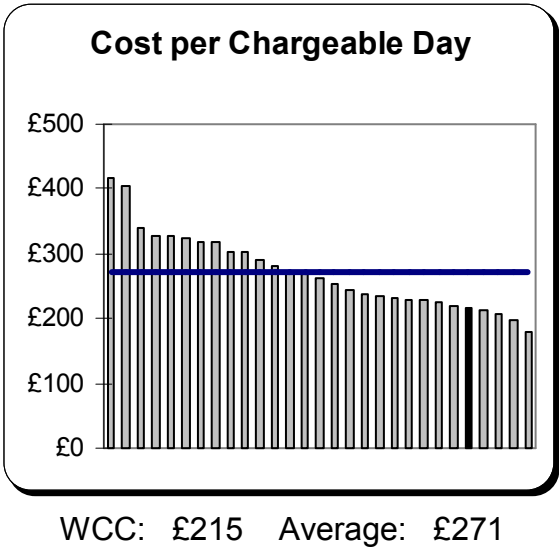
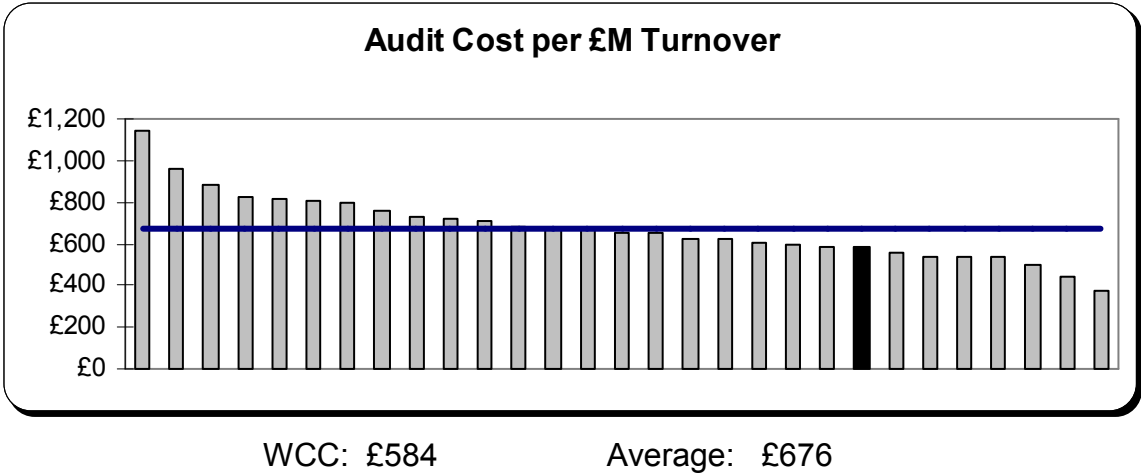
Report author: Steve Memmott, Chief Auditor

---

Unpublished documents relied upon in the preparation of this Report:

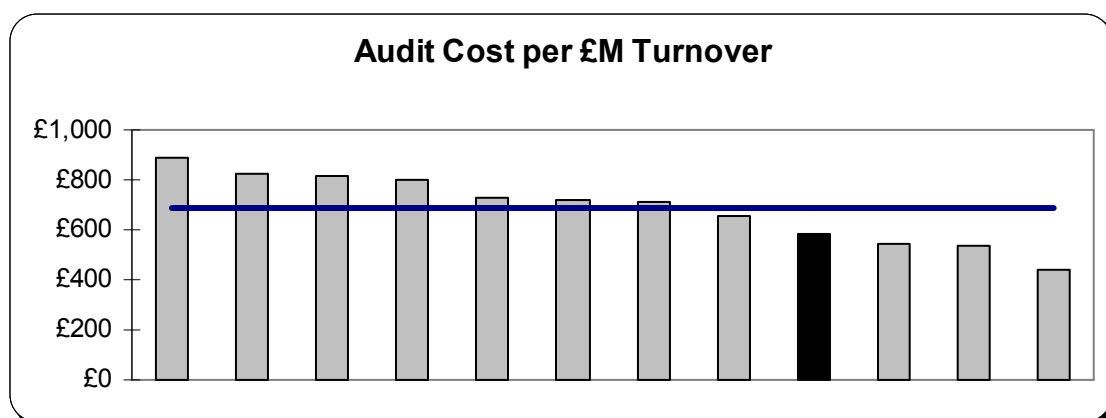
None

WCC Compared With All English Counties



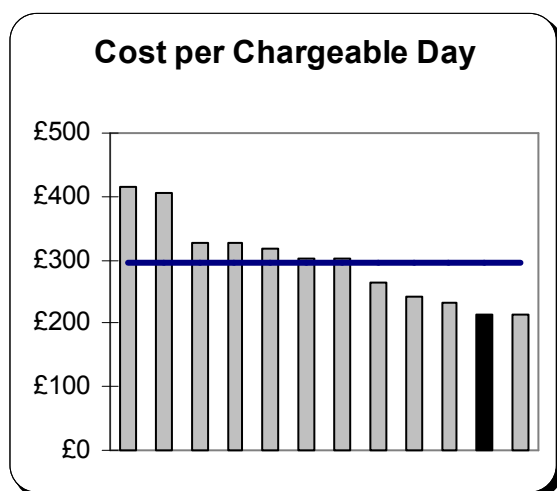
## APPENDIX B

### WCC Compared With Selected\* English Counties

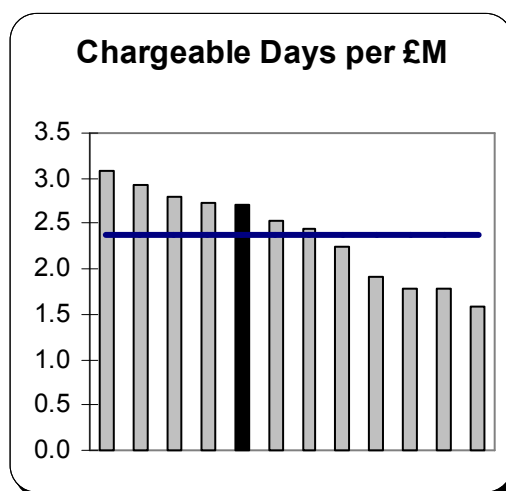


WCC: £584

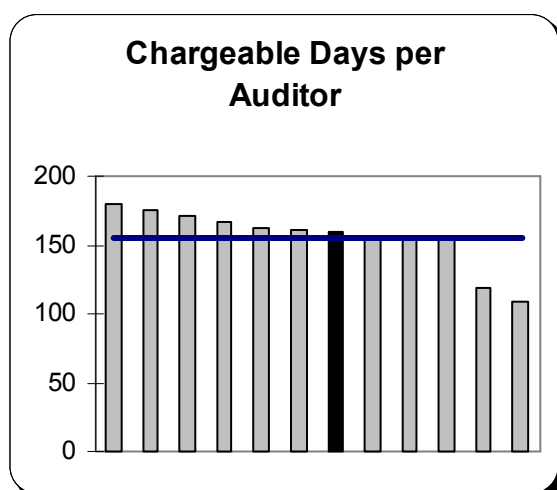
Average: £688



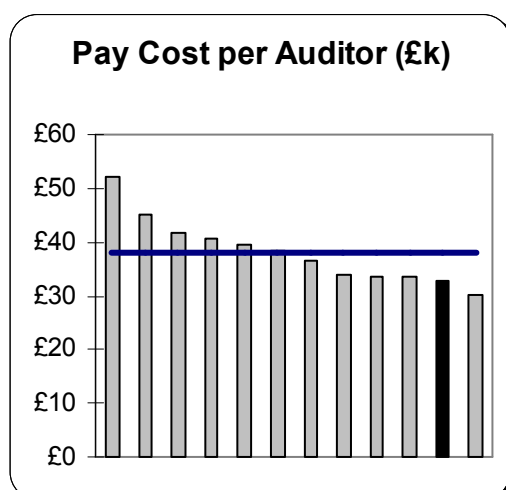
WCC: £215 Average: £297



WCC: 2.7 Average: 2.4



WCC: 159 Average: 156



WCC: £33 Average: £38

\* Selected Counties: Bedfordshire  
Dorset  
Northumberland  
Warwickshire

Cornwall  
Durham County  
Oxfordshire  
[Wiltshire]

Devon  
East Sussex  
Somerset  
Worcestershire

WCC Compared With All English Counties (Timeseries)

