

Location of West Lavington Footpath No.1

REGULATORY COMMITTEE

DATE

31<sup>st</sup> MARCH 2004

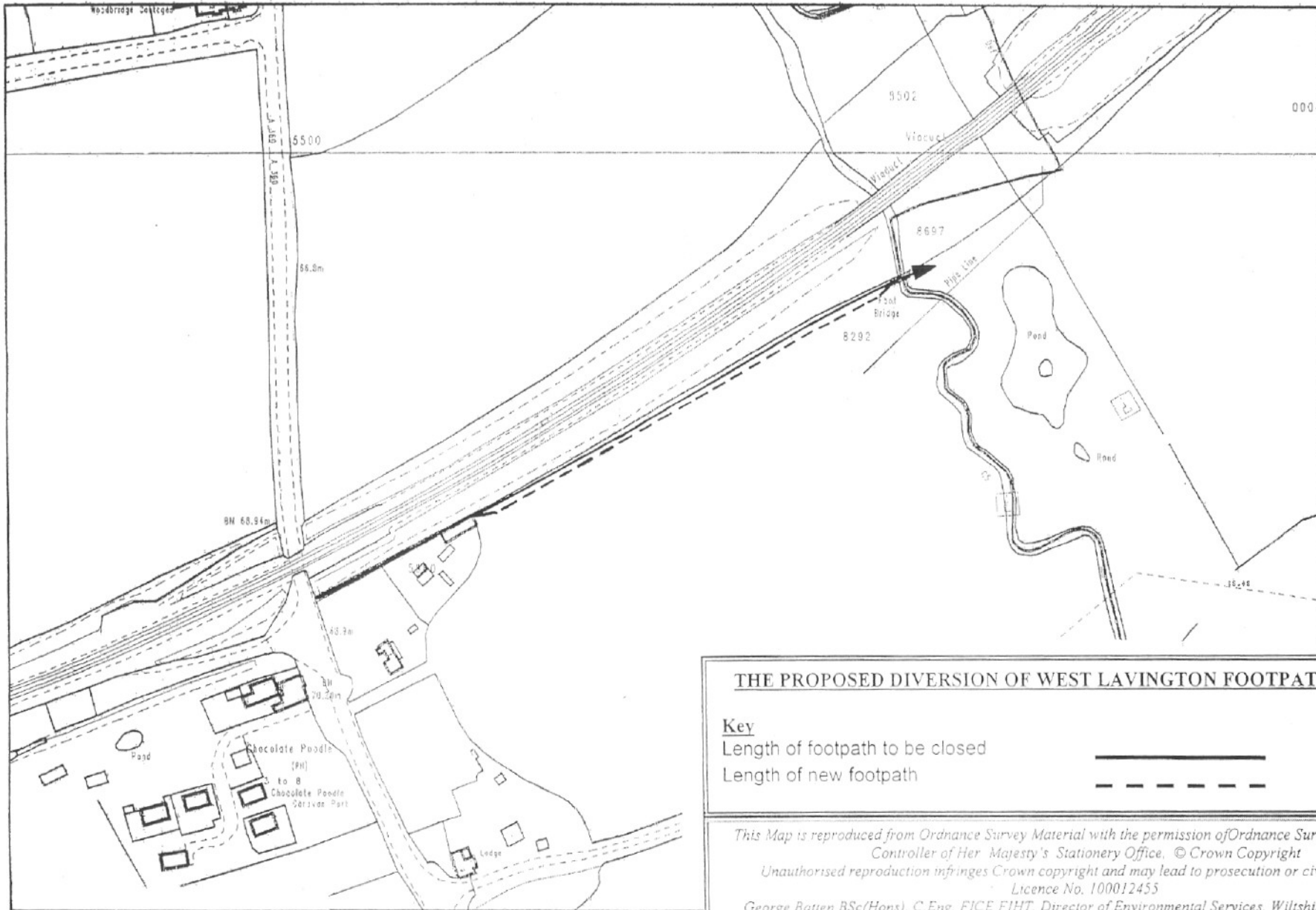
SITE LOCATION: WEST LAVINGTON FOOTPATH NO. 1

Reproduced from the Ordnance Survey Map with the permission of The Controller of H.M. Stationery Office  
Crown Copyright reserved. LA 100023455

**WILTSHIRE COUNTY COUNCIL**  
Director of Environmental Services  
County Hall  
Trowbridge  
Wiltshire BA14 8JD

SCALE:

Not to scale



**THE PROPOSED DIVERSION OF WEST LAVINGTON FOOTPATH No. 1 (part)**

**Key**

Length of footpath to be closed

Length of new footpath



*This Map is reproduced from Ordnance Survey Material with the permission of Ordnance Survey on behalf of the Controller of Her Majesty's Stationery Office. © Crown Copyright  
 Unauthorised reproduction infringes Crown copyright and may lead to prosecution or civil proceedings.  
 Licence No. 100012455*

*George Batten BSc(Hons), C.Eng. FICE FIHT, Director of Environmental Services, Wiltshire County Council  
 Prepared by KF Date 4<sup>th</sup> March 2004 Scale 1:2500 Grid Ref. ST 996-548*



**Wiltshire**  
 COUNTY COUNCIL