

REGULATORY COMMITTEE

DATE

14th FEBRUARY 2007

PLANNING APPLICATION

N.06.07007

LOCATION

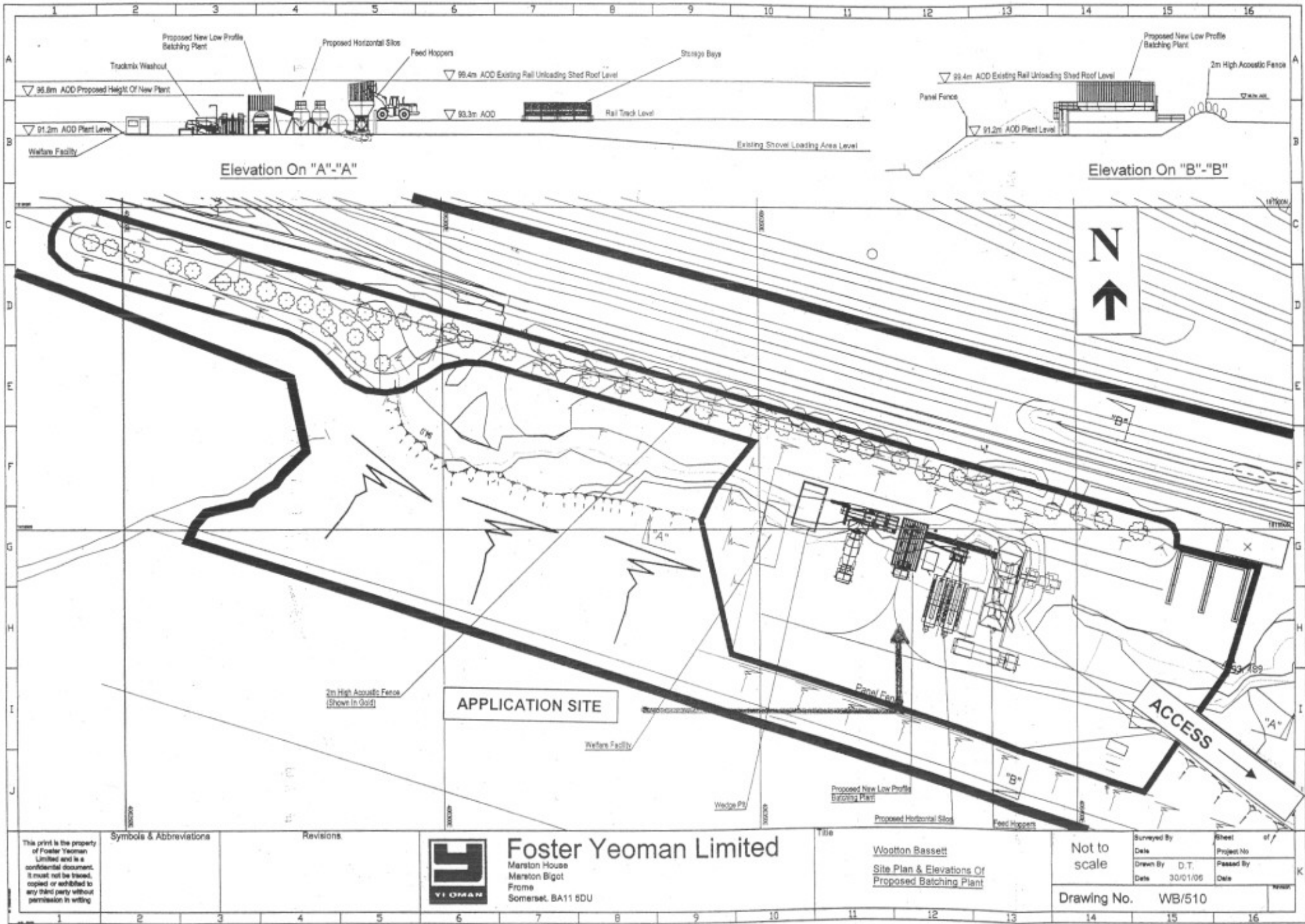
WOOTTON BASSETT:
CONCRETE BATCHING PLANT

Reproduced from the Ordnance Survey Map with the permission of The Controller of H.M. Stationery Office
Crown Copyright reserved. 100023455

WILTSHIRE COUNTY COUNCIL
Director of Environmental Services
County Hall
Trowbridge
Wiltshire BA14 8JD

SCALE:

1:10,000



This print is the property of Foster Yeoman Limited and is a confidential document. It must not be traced, copied or exhibited to any third party without permission in writing.

Symbols & Abbreviations

Revisions



Foster Yeoman Limited

Marston House
Marston Bigot
Frome
Somerset, BA11 6DU

Wootton Bassett
Site Plan & Elevations Of
Proposed Batching Plant

Not to scale

Surveyed By	Sheet	of
Date	Project No	
Drawn By D.T.	Passed By	
Date 30/01/06	Date	

Drawing No. WB/510