

Waste collection

Better, Worse or stayed the same?		Frequency	Percent	Valid Percent
Valid	Better	245	42.5	43.1
	Stayed the same	248	43.0	43.6
	Worse	72	12.5	12.7
	Don't know	4	0.7	0.7
	Total	569	98.6	100.0
Missing	System	8	1.4	
Total		577	100.0	

Better
Stayed the same
Worse
Don't know

Recycling

better, Worse or stayed the same?		Frequency	Percent	Valid Percent
Valid	Better	418	72.4	73.5
	Stayed the same	117	20.3	20.6
	Worse	17	2.9	3.0
	Don't know	17	2.9	3.0
	Total	569	98.6	100.0
Missing	System	8	1.4	
Total		577	100.0	

Sport/leisure opportunities

better, Worse or stayed the same?		Frequency	Percent	Valid Percent
Valid	Better	58	10.1	10.3
	Stayed the same	254	44.0	45.0
	Worse	46	8.0	8.2
	Don't know	206	35.7	36.5
	Total	564	97.7	100.0
Missing	System	13	2.3	
Total		577	100.0	

Affordable housing

better, Worse or stayed the same?		Frequency	Percent	Valid Percent
Valid	Better	39	6.8	6.9
	Stayed the same	119	20.6	21.1
	Worse	126	21.8	22.3
	Don't know	280	48.5	49.6
	Total	564	97.7	100.0
Missing	System	13	2.3	
Total		577	100.0	

Preventing homelessness

better, Worse or stayed the same?		Frequency	Percent	Valid Percent
Valid	Better	14	2.4	2.5
	Stayed the same	106	18.4	18.9
	Worse	38	6.6	6.8
	Don't know	404	70.0	71.9
	Total	562	97.4	100.0
Missing	System	15	2.6	
Total		577	100.0	

Benefits service

better, Worse or stayed the same?		Frequency	Percent	Valid Percent
-----------------------------------	--	-----------	---------	---------------

Valid	Better	30	5.2	5.3
	Stayed the same	123	21.3	21.8
	Worse	33	5.7	5.8
	Don't know	379	65.7	67.1
	Total	565	97.9	100.0
Missing	System	12	2.1	
Total		577	100.0	

Supporting local businesses

better, Worse or stayed the same?		Frequency	Percent	Valid Percent
Valid	Better	23	4.0	4.1
	Stayed the same	144	25.0	25.8
	Worse	61	10.6	10.9
	Don't know	331	57.4	59.2
	Total	559	96.9	100.0
Missing	System	18	3.1	
Total		577	100.0	

Planning applications service

better, Worse or stayed the same?		Frequency	Percent	Valid Percent
Valid	Better	39	6.8	6.9
	Stayed the same	147	25.5	26.1
	Worse	51	8.8	9.1
	Don't know	326	56.5	57.9
	Total	563	97.6	100.0
Missing	System	14	2.4	
Total		577	100.0	

Planning enforcement service

better, Worse or stayed the same?		Frequency	Percent	Valid Percent
Valid	Better	18	3.1	3.2
	Stayed the same	101	17.5	18.1
	Worse	92	15.9	16.5
	Don't know	346	60.0	62.1
	Total	557	96.5	100.0
Missing	System	20	3.5	
Total		577	100.0	

Community transport

better, Worse or stayed the same?		Frequency	Percent	Valid Percent
Valid	Better	73	12.7	13.0
	Stayed the same	221	38.3	39.4
	Worse	64	11.1	11.4
	Don't know	203	35.2	36.2
	Total	561	97.2	100.0
Missing	System	16	2.8	
Total		577	100.0	

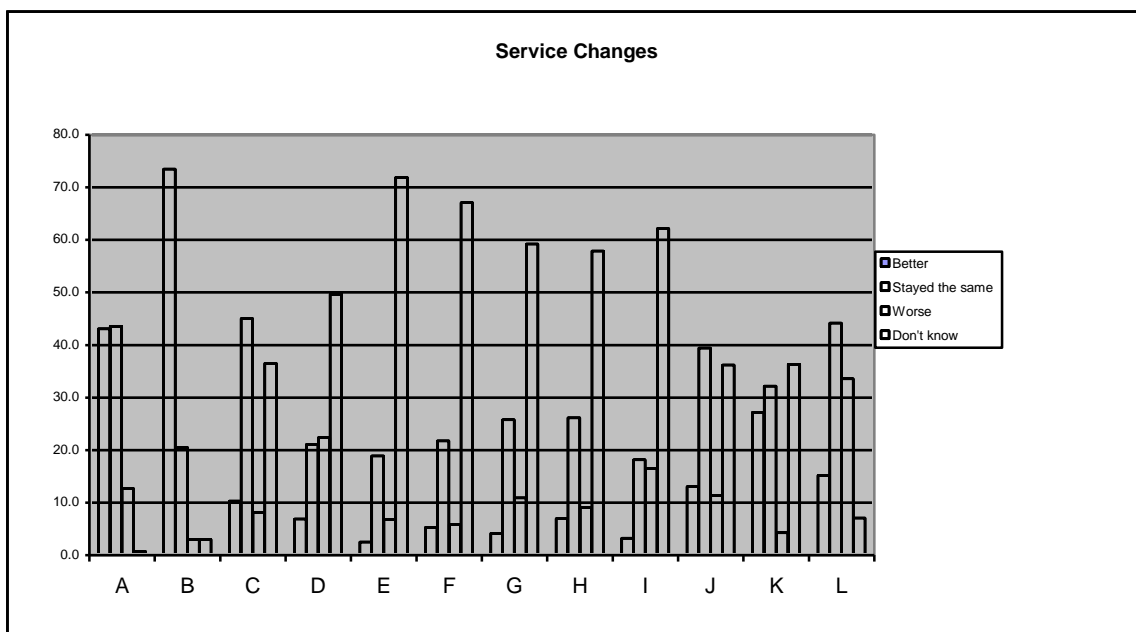
Improved access to services, inc telephone and online

better, Worse or stayed the same?		Frequency	Percent	Valid Percent
Valid	Better	152	26.3	27.2
	Stayed the same	180	31.2	32.2
	Worse	24	4.2	4.3

	Don't know	203	35.2	36.3
	Total	559	96.9	100.0
Missing	System	18	3.1	
Total		577	100.0	

Keeping public land clear of litter and refuse

better, Worse or stayed the same?		Frequency	Percent	Valid Percent
Valid	Better	86	14.9	15.2
	Stayed the same	250	43.3	44.2
	Worse	190	32.9	33.6
	Don't know	40	6.9	7.1
	Total	566	98.1	100.0
Missing	System	11	1.9	
Total		577	100.0	



A	B	C	D	E	F	G	H	I
43.1	73.5	10.3	6.9	2.5	5.3	4.1	6.9	3.2
43.6	20.6	45.0	21.1	18.9	21.8	25.8	26.1	18.1
12.7	3.0	8.2	22.3	6.8	5.8	10.9	9.1	16.5
0.7	3.0	36.5	49.6	71.9	67.1	59.2	57.9	62.1

J	K	L
13.0	27.2	15.2
39.4	32.2	44.2
11.4	4.3	33.6
36.2	36.3	7.1

