

A Local Development Scheme for North Wiltshire

First Revision 2006 - 2009

Document 1	The Local Development Scheme	Page
Section 1:	Introduction:	2
	<ul style="list-style-type: none"> • Background to the Local Development Framework • Purpose of the Local Development Scheme • Relationship with the Existing Development Plan 	
Section 2:	The Local Development Framework Schedule	6
Section 3:	The Local Development Framework Timetable	13
Section 4:	Local Development Document Profiles	15
Appendix A	Glossary of Terms	34
Appendix B	Sources of Further Information	36
Document 2	The Supporting Statement	37
	<ol style="list-style-type: none"> 1. Introduction 2. Resources for the Local Development Framework 3. Risk Assessment 4. Supporting Technical Studies 5. Monitoring, Sustainability Appraisal and Strategic Environmental Assessment 	
(Note: Document 2 is a separate publication and is not a formal part of the Local Development Scheme)		

Section 1 - Introduction

Background

The new system that helps to plan our towns and rural areas has been in operation since September 2004. The previous Local Development Scheme for North Wiltshire 2005 – 2007 was designed at the beginning of this new process and approved in May 2005. Now with the benefit of monitoring information, new government guidance, recent progress on related Development Plan policy documents and other changes in circumstances, it is necessary to revisit the Scheme and to make appropriate adjustments.

The new planning system requires the South West Regional Assembly to produce a *Regional Spatial Strategy* which has reached an advanced stage of preparation and the first public consultation period begins in Spring 2006. North Wiltshire District Council has also made significant progress in preparing new documents for the *Local Development Framework*. This is linked to the Council's new *Community Strategy* which was issued during November 2005 and therefore ensures that all appropriate aspirations of the community that have a *spatial planning* dimension have been taken into account.

Since the approval of the last LDS, the new Alteration to the Wiltshire and Swindon Structure Plan 2016 prepared by Wiltshire County Council has reached an advanced stage and is due to be adopted as part of the Local Development Framework (LDF) in February 2006. This will require, amongst other matters, for a Joint West of Swindon Study with Swindon Borough Council to be undertaken to identify sites for 1000 dwellings. Both Council's have set up a West Of Swindon Joint Study Steering Group which will report its findings in the Autumn of 2006 with a view to beginning work on the consequential West of Swindon Action Area Plan. This is included in the Local Development Schemes of both Swindon Borough Council and North Wiltshire District Council.

The North Wiltshire Local Plan 2011 has had a Public Inquiry which finished in September 2005, the binding report will be issued in April 2006 and is due to be approved as part of the LDF in July 2006. These will remain in force over the next few years to ensure that the District continues to have full planning policy coverage. This will ensure that the public, landowners and the developers of land will continue to have the benefit of up-to-date planning policies that support their interests.

Purpose of the Local Development Scheme.

The document you are reading is the first revision of the *Local Development Scheme* for North Wiltshire District to cover the period from 2006 to 2009. Once approved by the Secretary of State, it will be one of the *folder of documents* that will form the Local Development Framework. It sets out:

- which new *local development documents* and other related documents will be produced;
- under what timescale over the next three years they will be produced; and
- how this will be achieved.

The *Regional Spatial Strategy* is being prepared by the South-West Regional Assembly with the assistance of other authorities and is not part of this local development scheme. Also, the Wiltshire County Council is responsible for local development documents for waste and minerals development and a separate Local Development Scheme has been prepared by that Authority for those purposes.

Relationship with the Existing Development Plan.

This Local Development Scheme has been prepared to follow the requirements of the Planning and Compulsory Purchase Act 2004 and sets out a three year programme for the production of the Local Development Framework.

It is proposed, under the terms of the statutory *Transitional Arrangements*, that North Wiltshire District Council will *save for continued use* the policies of the North Wiltshire Local Plan 2001. This will be replaced by the North Wiltshire Local Plan 2011 which is due to be approved by the 21st of July 2006.

In due course, as set out in the schedule and timetable below, the various saved policies from both the 2001 Local Plan and eventual 2011 Local Plan will be replaced by local development documents. This process of replacement will continue on a rolling programme basis from then on.

The Development Plan that applies to North Wiltshire as at April 2006 is the Wiltshire Structure Plan 2011, the Wiltshire and Swindon Structure Plan Alteration 2016, the North Wiltshire Local Plan 2001, the Wiltshire and Swindon Waste Plan 2005 and the Wiltshire and Swindon Minerals Local Plan 2001. Only development plan policies that are the responsibility of North Wiltshire District Council are the subject of this Local Development Scheme.

The current North Wiltshire Local Plan was adopted in January 2001. It is proposed that the policies of this Plan, in their entirety, are saved under the Transitional Arrangements until the adoption of the North Wiltshire Local Plan 2011 by 21st July 2006.

The following Supplementary Planning Guidance documents will remain as material considerations in dealing with planning applications in accordance with the policies of the adopted North Wiltshire Local Plan 2001 and where there are equivalent policies in the forthcoming North Wiltshire Local Plan 2011.

The North Wiltshire District- wide Housing Needs Survey 2000. This relates to policies RH20 (General Affordable Housing Provision) and RH21 (affordable Housing Exceptions) of the NWLP 2001. This document will be replaced by the Housing Needs Survey 2005 which will be incorporated in this Revised LDS into the proposed Affordable Housing Supplementary Planning Document.

The North Wiltshire Affordable Housing SPG May 2004. This relates to policies RH20 (General Affordable Housing Provision) and RH21 (affordable Housing Exceptions) of the NWLP 2001. It also relates to policies H5 (Affordable Housing in Urban Areas), H6 (Affordable Housing in Rural Areas) and H7 (Affordable Housing on Rural Exceptions Sites) of the forthcoming North Wiltshire Local Plan 2011.

The Flowers Yard and Riverside Development Brief 2001. This relates to various policies within the NWLP 2001.

The North Wiltshire Open Space Study July 2004. This relates to policies RLF2 (Open Space Provision and RLF3 (Development on Open Space).

The North Site Cocklebury, Chippenham Development Brief 2003. The relevance of this document will require further examination in the light of the Inspector's binding report on the emerging North Wiltshire Local Plan 2011 expected in April 2006.

The South Site Cocklebury, Chippenham Development Brief 2003. The relevance of this document will require further examination in the light of the Inspector's binding report on the emerging North Wiltshire Local Plan 2011 expected in April 2006.

The St Ivel Factory Development Brief 2004. This document will require further examination in the light of the Inspector's binding report on the emerging North Wiltshire Local Plan 2011 expected in April 2006.

The Concrete Batching Plant, Christian Malford Development Brief Oct 2000. This document will require further examination in the light of the Inspector's binding report on the emerging North Wiltshire Local Plan 2011 expected in April 2006.

The Rowden Lane, Chippenham Development Brief Oct 2000. This relates to policies RH1 (Chippenham) and various others within the NWLP 2001. It also relates to policy H2 and other policies within the forthcoming North Wiltshire Local Plan 2011

A Playing Pitch Strategy for North Wiltshire 2001 – 2007. This relates to policies RLF1 (Local Facilities in Towns and Villages), RLF2 (Open Space Provision) and RLF3 (Development on Open Space) and RTM1 (Outdoor Recreation). It also relates to policy C2 and other policies within the forthcoming North Wiltshire Local Plan 2011

The Little Somerford Village Design and Conservation Area Statement July 2002. This relates to various policies within the NWLP 2001.

The Allington Conservation Area Statement adopted January 2002. This relates to various policies within the NWLP 2001.

The Calne Conservation Area Statement adopted February 2002. This relates to various policies within the NWLP 2001.

Other Conservation Area Statements adopted prior to 2001 though remaining relevant in association with various policies within the NWLP 2001 include the following:

Ashton Keynes CAS	adopted 19.07.94
Cherhill CAS	adopted 15.09.98
Corsham CAS	adopted 21.07.98
Cricklade CAS	adopted 22.09.99
Rowden CAS	adopted 21.05.96
Sherston CAS	adopted 05.11.96

Section 2 – The Local Development Framework Schedule

The *Local Development Framework* consists of two different types of *Local Development Documents*, both of which should conform to national *Planning Policy Statements* and should be in general conformity with the *Regional Spatial Strategy*.

- *Development Plan Documents* are spatial planning documents covering a range of policy areas.
- They are subject to independent examination. Within the process for the preparation of a *Development Plan Document* local people will have an opportunity to comment on the Council's preferred options and to have any

representations on the submitted document formally considered by an independent inspector at the public examination.

- *Supplementary Planning Documents* will amplify policies and proposals contained in *Development Plan Documents*.
- *Supplementary Planning Guidance* will remain a material consideration in the determination of planning applications where they relate to a saved policy from the adopted local plan, however these will gradually be replaced by *Supplementary Planning Documents*.
- *Supplementary Planning Documents* are not formally subject to independent examination. For *Supplementary Planning Documents* local people will have the opportunity to comment on the draft document before the Council formally adopts it. *Supplementary Planning Documents* can be prepared before *Development Plan Documents* provided there are clear links with ‘saved’ Development plan policies under the transitional arrangements.

Schedule of Proposed Local Development Documents

The following table overleaf details the documents to be produced within the three year period that this *Local Development Scheme* covers. Some documents have been included which will not be approved within the three year period, but will commence within that period.

The document title has been included, its status to whether it is a *Development Plan Document*, *Supplementary Planning Document*, a ‘saved’ plan or if it has no status. A brief description as to what the document is intended to cover has been shown. The heading, “Chain of Conformity” shows how the document will conform with other planning documents and guidance. Dates for the formal stages of production are also indicated.

Document Title	Status	Brief Description	Chain of Conformity	Date for Issues and Options	Date for Preferred Options Consultation	Date for publication of Draft	Date for Submission to Secretary of State	Proposed Date for Adoption
Wiltshire and Swindon Structure Plan 2011	Saved as Altered by the Wiltshire and Swindon Structure Plan 2016	Sets out the strategic policy guidance for Wiltshire and Swindon	Regional Planning Guidance for the South West 10 1994	N/A	N/A	N/A	N/A	N/A
Wiltshire and Swindon Structure Plan 2016	Saved Plan, until replaced by the Adoption of the South-West RSS 2006 - 2026	Sets out the strategic policy guidance for Wiltshire and Swindon	Regional Spatial Strategy (currently the Regional Planning Guidance for the South West 10 2001	N/A	N/A	N/A	N/A	N/A
North Wiltshire Local Plan 2001	Saved Plan until July 2006 when it will be replaced by the North Wiltshire Local Plan 2011	The adopted local plan, sets out the policies and proposals for the development in North Wiltshire	Structure Plans for Western Wiltshire and North East Wiltshire (now replaced by Wiltshire Structure Plan 2001 and partially altered by the Wiltshire and Swindon Structure Plan Alteration 2016)	N/A	N/A	N/A	N/A	N/A

Document Title	Status	Brief Description	Chain of Conformity	Date for Issues and Options	Date for Preferred Options Consultation	Date for publication of Draft	Date for Submission to Secretary of State	Proposed Date for Adoption
North Wiltshire Local Plan 2011	Saved once adopted until July 2009, unless replaced by relevant DPDs	Sets out the policies and proposals for land use in North Wiltshire	Wiltshire and Swindon Structure Plan 2011 (to be altered by the Wiltshire and Swindon Structure Plan 2016)	N/A	N/A	Nov. 2004	N/A	July 2006
Statement of Community Involvement	N/A	Document setting standards & approach to involving stakeholders and the community in the production of the LDF.	N/A	N/A	N/A	October 2005	April 2006	March 2007 (or earlier if no Examination held)
Core Strategy	DPD	Sets out the vision, objectives and strategy for the spatial development of the area, and will provide the framework for development control.	Currently RPG10 and PPGs to be replaced by later RSS in 2008 and all relevant PPS's All LDDs to be in conformity with Core Strategy.	January 2006	Jun 2006	N/A	Jan 2007	January 2008

Document Title	Status	Brief Description	Chain of Conformity	Date for Issues and Options	Date for Preferred Options Consultation	Date for publication of Draft	Date for Submission to Secretary of State	Proposed Date for Adoption
Proposals Map	DPD	Identifies location of proposals and areas where the intention is to prepare an Area Action Plan.	Core Strategy	N/A	N/A	N/A	N/A	To follow each DPD
Housing and Employment	DPD	Identifies the locations for housing and employment development and indicates the approach to affordable housing.	Core Strategy, the Housing SPD has to be in conformity with the Housing DPD	May 2006	Sep 2006	N/A	Nov 2007	Nov 2008
Bowood Estate Area Action Plan (to be prepared in partnership with the Bowood Estate)	DPD	Identifies specific policies and actions that are necessary to maintain the integrity of the Bowood Estate including its Grade 1 Historic Park	NWDC Local Plan 2011 and Core Strategy	Sep 2006	Jan 2007	N/A	May 2007	May 2008

Document Title	Status	Brief Description	Chain of Conformity	Date for Issues and Options	Date for Preferred Options Consultation	Date for publication of Draft	Date for Submission to Secretary of State	Proposed Date for Adoption
West of Swindon Area Action Plan <i>(to be prepared in partnership with SBC)</i>	DPD	Allocations and Inset Map to meet Structure Plan requirements to 2016 at the West of Swindon Principal Urban Area	Core Strategy	Feb 2007	Jun 2007	N/A	Dec 2008	Dec 2009
Rural Area Action Plan	DPD	Contains detailed policies and proposals for the implementation of the spatial strategy for rural areas; including creating, enhancing, and protecting the natural environment	Core Strategy	April 2007	Oct 2007	N/A	Oct 2008	April 2010

Document Title	Status	Brief Description	Chain of Conformity	Date for Issues and Options	Date for Preferred Options Consultation	Date for publication of Draft	Date for Submission to Secretary of State	Proposed Date for Adoption
Chippenham and Main Towns Area Action Plan	DPD	Contains detailed policies and proposals for the implementation of the spatial strategy for urban areas.	Core Strategy	April 2007	Oct 2007	N/A	Oct 2008	April 2010
Affordable Housing	SPD	Sets out guidance for the provision of affordable housing.	Core Strategy, Housing DPD			Jun 2006		March 2007
Sustainable Development	SPD	Sets out guidance for sustainable development.	North Wiltshire Local Plan 2011			Oct 2006		Oct 2007
Open Space	SPD	Sets out guidance for the provision of open space.	North Wiltshire Local Plan 2011			Oct 2006		Oct 2007
Conservation Area Criteria and Character Guidance	SPD	Set out local policy guidance on conservation area character areas and criteria for designation	Duty under Planning (Listed Buildings & Conservation Areas) Act 1990. Saved Local Plan Policies. North Wiltshire Local Plan 2011			Sept 2006		Mar 2007

Document Title	Status	Brief Description	Chain of Conformity	Date for Issues and Options	Date for Preferred Options Consultation	Date for publication of Draft	Date for Submission to Secretary of State	Proposed Date for Adoption
Chippenham Conservation Area Management Plan	SPD	Sets out the guidance for development in the Conservation Area	Duty under Planning (Listed Buildings & Conservation Areas) Act 1990. Saved Local Plan Policies. North Wiltshire Local Plan 2011			Nov 2006		May 2007
Wootton Bassett Conservation Area Management Plan	SPD	Sets out the guidance for development in the Conservation Area	Duty under Planning (Listed Buildings & Conservation Areas) Act 1990. Saved Local Plan Policies. North Wiltshire Local Plan 2011			Mar 2007		Nov 2007
Malmesbury Conservation Area Management Plan	SPD	Sets out the guidance for development in the Conservation Area	Duty under Planning (Listed Buildings & Conservation Areas) Act 1990. Saved Local Plan Policies. North Wiltshire Local Plan 2011			Jan 2007		May 2007
Design	SPD	Sets out guidance on design.	Core Strategy			March 2007		March 2008

Note 1: Generally and where appropriate, there will be a pre-examination meeting arranged for a date 3 - 4 months before the Examination. The commencement of the Examination will be on a date 6 – 9 months before the estimated date for adoption.

Section 3 – The Local Development Framework Timetable

(Follows on next page)

Note: The Timetable includes those documents that are due to be commenced within the three year period of the Local Development Scheme. However, in the interests of clarity, other potential DPDs may be programmed beyond that period. However, the need for and timing of those documents will be reviewed at the next review of the Local Development Scheme. It is anticipated that wherever possible, this Authority will align the preparation of documents to reflect policy links or shared preparation processes in accordance with Planning Policy Guidance Note 12 Guidance.

Both the timetable for the period 2006 – 2009 and the timetable contained with the previous Local Development Scheme for 2005 – 2008 have been set out, in order to show the main changes that have occurred.

	2005				2006				2007				2008				2009				2010				2011	
	Ja	Ap	Jy	Oc	Ja	Ap	Jy	Oc	Ja	Ap	Jy	Oc	Ja	Ap	Jy	Oc	Ja	Ap	Jy	Oc	Ja	Ap	Jy	Oc	Ja	Ap
North Wiltshire Local Plan 2001	Saved Until July 2006																									
North Wiltshire Local Plan 2011					Most Saved Until Jan 2008				Many Saved Until Jul 2009				Rest Saved until Apr 2010													
Core Strategy DPD			I & O Jan 06	PO Jun	Sub. To S/S Jan 07			Examine Jun 07	Adopt Jan 08																	
Housing & Employ't Allocations DPD			Issues & Opts Pub. Apr 06		PO Sep 06				Sub S/S Nov 07	Exam. May 08	Adopt Nov 08															
West of Swindon Area Action Plan					Issues & Opts Pub. Feb 07			PO Jun 07	Examine June 09				Adopt Dec 09													
Bowood Estate Area Action Plan					Iss & Op Sep 06	PO J07		Sub SS May 07	Examine Dec 07	Adopt May 08																
Rural Area Action Plan DPD						Issues & Opts Pub. April 07		PO Oct 07	Submission to S/S Oct 08		Examine Jul 09		Adopt Apr 10													
Chippenham & NW Towns AAP DPD						Issues & Opts Pub. April 07		PO Oct 07	Submission to S/S Oct 08		Examine Jul 09		Adopt Apr 10													
Affordable Housing SPD			Publish Draft by Jun 2006		Adopt as SPD by Apr 2007																					
Sustainable Development SPD					Publish Draft by Oct 2006		Adopt as SPD by Oct 2007																			
Open Space SPD					Publish Draft by Oct 2006		Adopt as SPD by Oct 2007																			
Design SPD						Publish Draft by Mar 2007		Adopt as SPD by Mar 2008																		
Conservation Area C&C Guide					Pub Draft Sep 06	Adopt Mar 07																				
Chippenham CAMP					Pub Draft Nov 06	Adopt May 07																				
Wootton Bassett CAMP						Pub Draft Mar 07		Adopt Nov 07																		
Malmesbury CAMP					Pub Draft Jan 07	Adopt May 07																				
Annual Monitoring Report																										

The First Revision of the North Wiltshire Local Development Scheme for the Period 2006 - 2009

	Mar-05	Sep-05	Mar-06	Sep-06	Mar-07	Sep-07	Mar-08	Sep-08	Mar-09
2001 Local Plan	Saved until March 2006								
2011 Local Plan	Transitional Process			Saved until Mar-07		Some saved until 2009			
LDF									
SCI	Preparatory Work			Submitted Mar-06		← Approved Mar-07			
Core Strategy	Prepare Options		Consult	Submitted May-06		← Approved Jun-07			
Proposals Map	2001 Local Plan Saved until Mar-06			2011 LP Saved until 2007		Some saved until 2009			
Housing & Employment DPD	Prepare Options/Consult			Submitted May-06		← Approved Jun-07			
Natural Environment DPD				Prepare Options/Consult			Submitted Mar-08		← Approved Mar-09
Community Facilities DPD				Prepare Options/Consult			Submitted Mar-08		← Approved Mar-09
Rural Area Action Plan DPD				Prepare Options/Consult			Submitted Mar-08		← Approved Mar-09
Retail DPD							Options/Consult		← Submitted Mar-09
Transport DPD							Options/Consult		← Submitted Mar-09
Tourism DPD							Options/Consult		← Submitted Mar-09
Historic Environment DPD							Options/Consult		← Submitted Mar-09
Affordable Housing SPD				Prepare/Consult		← Adopt Mar-07			
Landscape SPD				Prepare/Consult		← Adopt Mar-07			
Sustainable Dev. SPD				Prepare/Consult		← Adopt Mar-07			
Open Space SPD				Prepare/Consult		← Adopt Mar-07			
Chippenham CAS SPD	Consult		Adopt Sep-05						
Great Somerford CAS SPD			Prepare/Consult		← Adopt Mar-06				
Malmesbury CAS SPD			Prepare/Consult		← Adopt Mar-06				
Design SPD				Prepare/Consult			← Adopt Mar-08		
Annual Monitoring	Report		Report		Report		Report		Continuous →

DELETED

The Deleted North Wiltshire Local Development Scheme 2005 - 2008

Section 4 – Local Development Document Profiles

Each of the Local Development Documents that will be produced within the 2006 – 2009 period have been given a profile to assist in the understanding of their content, coverage and timetable for production. Each LDD profile is given a separate page for ease of referral.

Only those documents that are due to be commenced within the three year period of this Local Development Scheme have been profiled and included here.

The Statement of Community Involvement

Document Details	
Role/Subject matter	Explains who will be involved in the preparation, alteration and review of LDDs and how the Council will consult organisations and people in their preparation. Also explains how the public will be consulted on planning applications. Each LDD will include a Statement of Conformity with SCI.
Geographical Coverage	District Wide
Status	Non Development Plan LDD
Chain of Conformity	Comply with the regulations of the Town and Country Planning (Local Development) (England) Regulations 2004, as well as having regard to the Council's Community and Communications Strategies
Timetable for Production	
Publication of draft	October 2005
Submission to Secretary of State	April 2006
Pre-Examination Meeting	None required
Examination	September 2006
Estimated date for adoption	March 2007
Justification for Programme	It is intended that as work progresses, the initial LDDs will follow the emerging SCI as far as practically possible.
Arrangements for Production	
Organisational Lead	Spatial Planning Team Leader
Political Management	Executive Committee, informed by Public Spaces and Local Plans Panel
Resources	Spatial Planning Team, with input from other Council Departments including those responsible for the Community Strategy. External consultants to carry out community consultation work.
Consultation	Will include consulting the Council's five Area Committees, Town and Parish Councils, statutory consultees and other interested parties including special consultation workshops.

The Proposals Map

Document Details	
Role/Subject matter	Will show the proposals and policies for North Wiltshire
Geographical Coverage	District Wide
Status	LDD
Chain of Conformity	Comply with the regulations of the Town and Country Planning (Local Development) (England) Regulations 2004.
Timetable for Production	
	The proposals maps will be reviewed, updated and reissued in conjunction with the development of new LDDs. Once those LDDs are adopted, the proposals will replace the equivalent proposals in the saved Local Plan 2011.
Publication of draft	N/A
Submission to Secretary of State	N/A
Pre-Examination Meeting	N/A
Examination	N/A
Estimated date for adoption	N/A
Justification for Programme	N/A
Arrangements for Production	
Organisational Lead	Spatial Planning Team Leader
Political Management	Executive Committee, informed by Public Spaces and Local Plans Panel Full Council Resolution to adopt final document.
Resources	Spatial Planning Team, with input from other Council Departments.
Consultation	Will include consulting the Council's five Area Committees, Town and Parish Councils, statutory consultees and other interested parties. Types of consultation to be decided, taking account of the latest draft of the SCI.

The Core Strategy

Document Details	
Role/Subject matter	Explains the vision, objectives and spatial strategy for the future development across the district of North Wiltshire and for individual settlements or areas within the district.
Geographical Coverage	District Wide
Status	LDD
Chain of Conformity	National PPG's/PPS's, RSS (or RPG10) and the Wiltshire Structure Plan 2016 if the RSS has not yet been adopted), Community Strategy and baseline evidence.
Timetable for Production	
Preparatory Work	January 2005 – March 2006
Publication of Preferred Options	Jun 2006
Submission to Secretary of State	Jan 2007
Pre-Examination Meeting	March 2007
Examination	June 2007
Estimated date for adoption	January 2008
Justification for Programme	The NWLP 2011 document in progress includes a Spatial Strategy and a set of Core Policies. Nevertheless, it is necessary to prioritise a Core Strategy DPD to ensure that a Core Strategy is in place before the expiry of the three year period of the transitional Local Plan.
Arrangements for Production	
Organisational Lead	Spatial Planning Team Leader
Political Management	Executive Committee informed by Public Spaces and Local Plans Panel Full Council Resolution to adopt final document.
Resources	Spatial Planning Team, with input from other Council Departments including those responsible for the Community Strategy.
Consultation	Will include consulting the Council's five Area Committees, Town and Parish Councils, statutory consultees and other interested parties. Types of consultation to be decided, taking account of the latest draft of the SCI.

The Housing and Employment Development Plan Document

Document Details	
Role/Subject matter	To include site allocations and area specific policies for housing.
Geographical Coverage	District Wide
Status	LDD
Chain of Conformity	National PPG's/PPS's, RSS (or RPG10 and the Wiltshire Structure Plan 2016 if the RSS has not yet been adopted) and Core Strategy.
Timetable for Production	
Preparatory Work	September 2005 – March 2006
Publication of preferred options	September 2006
Submission to Secretary of State	November 2007
Pre-Examination Meeting	Feb 2008
Examination	May 2008
Estimated date for adoption	November 2008
Justification for Programme	The current NWLP 2001 only includes housing and employment allocations and provision up to 2001. The NWLP 2011 document in progress includes such allocations sufficient for the period up to 2011. Nevertheless, it is necessary to prioritise a Housing and Employment DPD for four reasons. Firstly, to reflect the proposals of the Wiltshire and Swindon Structure Plan Alteration to 2016. Secondly, to reflect any likely Regional Spatial Strategy alterations to housing distribution to the period ending 2026. Thirdly, to incorporate the findings of the 2005 Housing Needs Survey and Gypsy and Traveller Needs Survey. In addition, the provision of affordable housing and stabilising a buoyant economy are Corporate Priorities within the NWDC Corporate Plan 2005-08 and is reflected in the priorities of the Community Strategy.
Arrangements for Production	
Organisational Lead	Spatial Planning Team Leader
Political Management	Executive Committee informed by Public Spaces and Local Plans Panel. Full Council Resolution to adopt final document.
Resources	Spatial Planning Team, with input from other Council Departments.

The Housing and Employment Development Plan Document /cont

Consultation	Will include consulting the Council's five Area Committees, Town and Parish Councils, statutory consultees and other interested parties. Types of consultation to be decided, taking account of the latest draft of the SCI.
--------------	--

The West of Swindon Area Action Plan

Document Details	
Role/Subject matter	To include site allocations and area specific policies for housing at West of Swindon
Geographical Coverage	The West of Swindon Joint Study Area
Status	LDD
Chain of Conformity	National PPG's/PPS's, RSS (or RPG11 and the Wiltshire Structure Plan 2016 if the RSS has not yet been adopted) and Core Strategy.
Timetable for Production	
Preparatory Work	March – December 2006
Publication of preferred options	Jun 2007
Submission to Secretary of State	Dec 2008
Pre-Examination Meeting	March 2009
Examination	June 2009
Estimated date for adoption	December 2009
Justification for Programme	The Wiltshire and Swindon Structure Plan Alteration 2016 will be approved in February 2006. This includes a policy that requires a Joint Study to find sufficient sites for 1000 dwellings on the western edge of Swindon. This Study will feed into this policy document.
Arrangements for Production	
Organisational Lead	Swindon Borough Council Forward Planning Officer in association with the North Wiltshire District Council Spatial Planning Team Leader.
Political Management	The respective Executive/Cabinet Committees of each Authority and Full Council Resolutions to adopt final document.
Resources	Spatial and Forward Planning Teams of both Authorities with input from other Council Departments.
Consultation	Will include consulting the Council's five Area Committees, Town and Parish Councils, statutory consultees and other interested parties. Types of consultation to be decided, taking account of the latest draft of the SCI.

The Bowood Estate Area Action Plan

Document Details	
Role/Subject matter	To include site allocations and area specific policies for the Bowood Estate
Geographical Coverage	The Bowood Estate
Status	LDD
Chain of Conformity	The North Wiltshire Local Plan 2011 and the Core Strategy.
Timetable for Production	
Preparatory Work	March – September 2006
Publication of preferred options	January 2007
Submission to Secretary of State	May 2007
Pre-Examination Meeting	August 2007
Examination	December 2007
Estimated date for adoption	May 2008
Justification for Programme	<p>A long term strategy must be adopted to guide the further diversification and development of the Historic asset over a long period to ensure its survival. For this reason, the Estate and NWDC have agreed to work together, along with their specialist consultants to prepare this Area Action Plan.</p> <p>The Bowood AAP will seek to identify the constraints and opportunities for future development over a 10 year period, including land buildings and other assets, within the context of NWDC's Core Strategy which it is anticipated will embody the accepted principles of sustainable development. The document will also include a 'health check' assessment of the Heritage asset and 'risk analysis'.</p>
Arrangements for Production	
Organisational Lead	The Bowood Estate (through specialist planning consultants) in association with the North Wiltshire District Council Spatial Planning Team Leader.
Political Management	The respective Executive/Cabinet Committees of each Authority and Full Council Resolutions to adopt final document.
Resources	The Bowood Estate will finance the production of the document with assistance from North Wiltshire District Council
Consultation	Will include consulting the Council's Calne Area Committees, Town and Parish Councils, statutory consultees and other interested parties. Types of consultation to be decided, taking account of the latest draft of the SCI.

The Rural Area Action Plan

Document Details	
Role/Subject matter	To decide specific rural area policies (outside main towns)
Geographical Coverage	District Wide
Status	LDD
Chain of Conformity	National PPGs/PPSs, RSS (or RPG10 and the Wiltshire Structure Plan 2016 if the RSS has not yet been adopted) and Core Strategy.
Timetable for Production	
Preparatory Work	April 2006 – April 2007
Publication of Preferred Options	October 2007
Submission to Secretary of State	Oct 2008
Pre-Examination Meeting	Apr 2009
Examination	Jul 2009
Estimated date for adoption	April 2010
Justification for Programme	The emerging Regional Strategy Spatial and sub-regional study work, together with the emerging strategy of the NWLP 2011 focuses new development at the PUAs and at Chippenham; with limited development opportunities at the 5 main other main towns. Given that the NWDC Corporate Plan includes priorities on subjects that touch upon the rural areas, new policies are required to tackle rural issues.
Arrangements for Production	
Organisational Lead	Spatial Planning Team Leader
Political Management	Executive Committee informed by Public Spaces and Local Plans Panel Full Council Resolution to adopt final document.
Resources	Spatial Planning Team, with input from other Council Departments.
Consultation	Will include consulting the Council's five Area Committees, Town and Parish Councils, statutory consultees and other interested parties. Types of consultation to be decided, taking account of the latest draft of the SCI.

The Chippenham and the Main Towns Area Action Plan

Document Details	
Role/Subject matter	To decide specific urban area policies
Geographical Coverage	Chippenham, Wootton Bassett, Calne, Corsham, Malmesbury and Cricklade
Status	LDD
Chain of Conformity	National PPGs/PPSs, RSS (or RPG10 and the Wiltshire Structure Plan 2016 if the RSS has not yet been adopted) and Core Strategy.
Timetable for Production	
Preparatory Work	April 2006 – April 2007
Publication of Preferred Options	October 2007
Submission to Secretary of State	April 2008
Pre-Examination Meeting	January 2009
Examination	Jul 2009
Estimated date for adoption	April 2010
Justification for Programme	The emerging Regional Strategy Spatial and sub-regional study work, together with the emerging strategy of the NWLP 2011 focuses new development at the PUAs and at Chippenham; with limited development opportunities at the 5 main other main towns. Given that the NWDC Corporate Plan includes priorities on subjects that touch upon the urban areas, new policies are required to tackle the issues.
Arrangements for Production	
Organisational Lead	Spatial Planning Team Leader
Political Management	Executive Committee informed by Public Spaces and Local Plans Panel Full Council Resolution to adopt final document.
Resources	Spatial Planning Team, with input from other Council Departments.
Consultation	Will include consulting the Council's five Area Committees, Town and Parish Councils, statutory consultees and other interested parties. Types of consultation to be decided, taking account of the latest draft of the SCI.

**The Sustainability Appraisal (SA) and
The Strategic Environmental Assessment (SEA)**

Document Details	
Role/Subject matter	Informs decision-making by providing information on the potential implications of policies and include social, environmental and environmental factors.
Geographical Coverage	An SA/SEA statement will accompany each LDD.
Chain of Conformity	Comply with the regulations.
Resources	Scoping Report completed in-house during October 2005

The Annual Monitoring Report (AMR)

Document Details	
Role/Subject matter	Review of progress each year (between 1 st April and the following 31 st March). Will compare progress against milestones for LDD preparation, as set out in the LDS. Will also monitor take-up of land to ensure allocated sites are the best options for North Wiltshire.
Date for Submission to Secretary of State	By 31 st December annually
Geographical Coverage	District Wide
Political Management	Executive Committee, informed by Public Spaces and Local Plans Panel
Resources	Spatial Planning Team, with input from other Council Departments.

The Affordable Housing Supplementary Planning Document

Document Details	
Role/Subject matter	To provide supporting information for providing affordable housing in North Wiltshire
Geographical Coverage	District Wide
Status	SPD
Chain of Conformity	Housing DPD
Timetable for Production	
Preparation	March 2006
Publication of draft	June 2006
Estimated date for adoption	March 2007
Arrangements for Production	
Organisational Lead	Spatial Planning Team Leader
Political Management	Executive Committee informed by Public Spaces and Local Plans Panel.
Resources	Spatial Planning Team in partnership with officers from Housing section.
Consultation	Will include consulting the Council's five Area Committees, Town and Parish Councils, statutory consultees and other interested parties. Types of consultation to be decided, taking account of the latest draft of the SCI.

The Sustainable Development Guide – Supplementary Planning Document

Document Details	
Role/Subject matter	To provide supporting information for achieving sustainable development.
Geographical Coverage	District Wide
Status	SPD
Chain of Conformity	Core Strategy
Timetable for Production	
Preparation	March 2006
Publication of draft	October 2006
Estimated date for adoption	October 2007
Arrangements for Production	
Organisational Lead	Spatial Planning Team Leader
Political Management	Executive Committee informed by Public Spaces and Local Plans Panel Full Council Resolution to adopt final document.
Resources	Spatial Planning Team in partnership with officers from Built Environment section
Consultation	Will include consulting the Council's five Area Committees, Town and Parish Councils, statutory consultees and other interested parties. Types of consultation to be decided, taking account of the latest draft of the SCI.

The Open Space Guide – Supplementary Planning Document

Document Details	
Role/Subject matter	To provide supporting information for open space in North Wiltshire.
Geographical Coverage	District Wide
Status	SPD
Chain of Conformity	Community Facilities DPD
Timetable for Production	
Preparation	March 2006
Publication of draft	October 2006
Estimated date for adoption	October 2007
Arrangements for Production	
Organisational Lead	Spatial Planning Team Leader
Political Management	Executive Committee informed by Public Spaces and Local Plans Panel. Full Council Resolution to adopt final document.
Resources	Spatial Planning Team in partnership with officers from Built Environment.
Consultation	Will include consulting the Council's five Area Committees, Town and Parish Councils, statutory consultees and other interested parties. Types of consultation to be decided, taking account of the latest draft of the SCI.

The Design Guide – Supplementary Planning Document

Document Details	
Role/Subject matter	To provide supporting information for design in North Wiltshire.
Geographical Coverage	District Wide
Status	SPD
Chain of Conformity	Housing DPD
Timetable for Production	
Preparation	October 2006
Publication of draft	March 2007
Estimated date for adoption	March 2008
Arrangements for Production	
Organisational Lead	Spatial Planning Team Leader
Political Management	Executive Committee informed by Public Spaces and Local Plans Panel. Full Council Resolution to adopt final document.
Resources	Spatial Planning Team in partnership with consultants and officers from Built Environment.
Consultation	Will include consulting the Council's five Area Committees, Town and Parish Councils, statutory consultees and other interested parties. Types of consultation to be decided, taking account of the latest draft of the SCI.

The Conservation Area Criteria and Character Supplementary Planning Document

Document Details	
Role/Subject matter	To provide supporting information to guide development in Conservation Area.
Geographical Coverage	Chippenham Conservation Area
Status	SPD
Chain of Conformity	Duty under Planning (Listed Building & Conservation Areas) Act 1990. Saved Local Plan Policies
Timetable for Production	
Preparation	March to September 2006
Publication of draft	September 2006
Estimated date for adoption	September 2007
Arrangements for Production	
Organisational Lead	Design & Estates Team Leader
Political Management	Executive Committee informed by Public Spaces and Local Plans Panel.
Resources	Design and Estates Team, with input from other Council teams and Business Areas impacting on the built environment.
Consultation	Will include consulting the Council's Area 3 Committee, town council, statutory consultees and other interested parties. Types of consultation to be decided, taking account of the latest draft of the SCI.

**The Chippenham Conservation Area Management Plan
Supplementary Planning Document**

Document Details	
Role/Subject matter	To provide supporting information to guide development in the Conservation Area.
Geographical Coverage	Chippenham Conservation Area
Status	SPD
Chain of Conformity	Duty under Planning (Listed Building & Conservation Areas) Act 1990. Saved Local Plan Policies
Timetable for Production	
Preparation	In progress
Publication of draft	November 2006
Estimated date for adoption	May 2007
Arrangements for Production	
Organisational Lead	Design & Estates Team Leader
Political Management	Executive Committee informed by Public Spaces and Local Plans Panel.
Resources	Design and Estates Team, with input from other Council Teams and Business Areas impacting on the built environment.
Consultation	Will include consulting the Council's Area 3 Committee, town council, statutory consultees and other interested parties. Types of consultation to be decided, taking account of the latest draft of the SCI.

**The Wootton Bassett Conservation Area Management Plan
Supplementary Planning Document**

Document Details	
Role/Subject matter	To provide supporting information to guide development in the Conservation Area.
Geographical Coverage	Wotton Bassett Conservation Area
Status	SPD
Chain of Conformity	Duty under Planning (Listed Building & Conservation Areas) Act 1990. Saved Local Plan Policies.
Timetable for Production	
Preparation	April 2006 to February 2007
Publication of draft	March 2007
Estimated date for adoption	November 2007
Arrangements for Production	
Organisational Lead	Design & Estates Team Leader
Political Management	Executive Committee informed by Public Spaces and Local Plans Panel.
Resources	Design and Estates Team, with input from other Council Teams and Business Areas impacting on the built environment.
Consultation	Will include consulting the Council's Area 1 Committee, parish council, statutory consultees and other interested parties. Types of consultation to be decided, taking account of the latest draft of the SCI.

**The Malmesbury Conservation Area Management Plan
Supplementary Planning Document**

Document Details	
Role/Subject matter	To provide supporting information to guide development in the Conservation Area.
Geographical Coverage	Malmesbury Conservation Area
Status	SPD
Chain of Conformity	Duty under Planning (Listed Building & Conservation Areas) Act 1990. Saved Local Plan Policies.
Timetable for Production	
Preparation	April 2006 – December 2006
Publication of draft	January 2007
Estimated date for adoption	May 2007
Arrangements for Production	
Organisational Lead	Design & Estates Team Leader
Political Management	Executive Committee informed by Public Spaces and Local Plans Panel.
Resources	Design and Estates Team, with input from other Council Teams and Business Areas impacting on the built environment.
Consultation	Will include consulting the Council's Area 1 Committee, town council, statutory consultees and other interested parties. Types of consultation to be decided, taking account of the latest draft of the SCI.

Appendix A – Glossary of Terms

AAP	Area Action Plan The mechanism for ensuring development of an appropriate, scale, mix in a defined area. These Plans will focus upon implementation, providing an important and quality for key areas of opportunity, change or conservation.
AMR	Annual Monitoring Report Authorities are required to produce an AMR to assess the implementation of the LDS and the extent to which policies in LDDs are being achieved.
CS	Community Strategy The Community Strategy is a statement of the needs and aspirations of local communities. NWDC has completed a strategy in association with its partners. Publication took place in November 2005.
DPD	Development Plan Document Any part of the LDF that forms part of the statutory development plan- This includes the Core Strategy, area wide policies, topic policies, area action plans, proposals map and site allocations.
LDF	Local Development Framework The collective name given to all those policies and documents forming the framework for future development in North Wiltshire. The LDF will contain a portfolio of LDDs.
LDD	Local Development Document The individual documents that set out planning policies for specific topics or for geographical areas.
LDS	Local Development Scheme The LDS sets out the programme for preparing the LDDs, what they will contain and proposals for monitoring and review.
LP	Local Plan The existing statutory plan setting out policies for controlling development and proposals for particular areas/sites.
PPS	Planning Policy Statements Government statements of national planning policy, being phased in to supersede Planning Policy Guidance notes (PPG's)
RSS	Regional Spatial Strategy The RSS, incorporating a regional transport strategy, provides a spatial framework to inform the preparation of local development documents, local transport plans and regional and sub-regional strategies and programmes that have a bearing on land-use activities.
SA	Sustainability Appraisal Assessment of the social, economic, and environmental impacts of the policies and proposals contained within the LDF.
SCI	Statement of Community Involvement Document explaining to stakeholders and the community, how and when they will be involved in the preparation of the LDF, and the steps that will be taken to facilitate this involvement.

SEA	Strategic Environmental Assessment Assessment of the environmental impacts of the policies and proposals contained within the LDF (in line with SEA Directive 2002)
Spatial Planning	Spatial Planning An approach to planning that ensures the most efficient use of land by balancing competing needs.
SPD	Supplementary Planning Document SPDs are intended to elaborate upon the policy and proposals in DPDs but do not have their status.
Statement of Conformity	Statement of Conformity This document should explain how the preparation of the DPD has met the requirements for community involvement set out in the SCI (or regulations if the document is not in place)
Folder of Documents	Folder of Documents The collection of individual documents such as the local development scheme, development plan documents, proposals map and other documents that together make up the Local Development Framework.
Transitional Arrangements	Transitional Arrangements The means under legislation that allows the old style structure and local plans to remain valid until replaced by local development documents.
Save for Continued Use.	Save for Continued Use The policies of the North Wiltshire Local Plan 2001 will remain in force until at least July 2006 whereupon the NWLP 2011 will be adopted. These policies in turn will entirely or substantially remain in force until the approval of new development plan documents or 2009 whichever is the earlier.

Appendix B – Further Information

For further information, contact officers within the Spatial Planning Team of Planning Services, North Wiltshire District Council, Monkton Park, Chippenham, Wiltshire, SN15 1ER.

Telephone: 01249 706444

Email: localplans@northwilts.gov.uk

Alternatively, view the North Wiltshire Local Development Framework on our website. Go to www.northwilts.gov.uk/localplans

Document 2 The Supporting Statement

1. Introduction
2. Resources for the Local Development Framework
3. Risk Assessment
4. Supporting Technical Studies
5. Monitoring, Sustainability Appraisal and Strategic Environmental Assessment

1. Introduction

This document contains detailed supporting information for the Local Development Scheme as set out in Document 1. Whilst it is not therefore part of the Local Development Scheme it will be used to assess the progress of producing the Local Development Framework documents and any necessary review of the Local Development Scheme in the future.

2. Resources

The resources that will be made available throughout the 2006 to 2009 period will comprise principally the staff within North Wiltshire District Council's Planning Services, Local Plan Team and such other officers from within the Planning Services Business Area and such other Business Areas as required to support the Local Development Framework. Such support will relate to issues of housing, economic development, countryside, environmental health, community strategy, urban design and historic buildings.

This resource will be supplemented by the use of relevant external Consultants as considered to be necessary.

The resource planning will be monitored and resources reviewed in accordance with the Council's annually published Corporate Priorities and the rolling three year Planning Services Business Plan.

In addition to the normal staff budget and also in addition to the recurring budget available for undertaking Local Development Framework tasks, North Wiltshire District Council has reserved financial resources from the Government 's Planning Delivery Grant 2003/04 and 2004/05 that was awarded to this Authority. This totals £430,000 in addition to the annual £60,000 budget, excluding staff and sundry costs. This will finance the additional work required in completing the current emerging North Wiltshire Local Plan 2011 and also progressing the new Local Development Documents as set out in the programme. This programme is contained within Document 1.

3. Risk Assessment

Five potential risk areas have been identified that may affect the delivery of this LDS programme. These are listed below together with the measures available to minimise the risk.

North Wiltshire District Council is vulnerable to changes of political control which may in consequence lead to changes in priorities. However, it is considered that the risk to the programme is **low** for the following reason. At present, the delivery of the Local Plan, Local Development Documents and this Local Development Scheme is a Council priority.

There will be a need for special financial provision for the future Local Development Framework documents at the end of the Planning Delivery Grant period, due to end in 2007/08. It is considered that the risk to the programme is presently a **medium** risk with a strong probability that this will **reduce to low** once this Authority considers its medium term budget during 2006/07.

Recruitment difficulties are, in the Country, generally affecting the staffing resources available for the undertaking of Development Plan work. The Spatial Planning Team within North Wiltshire is presently at full establishment, but it can be anticipated that staff turnover is likely in the next three years. It is considered that this represents a **medium** risk. The risk is monitored closely through the operation of the NWDC Planning Services Business Plan and a variety of staff retention steps in combination with the use of external consultants are in place to reduce this risk further.

There is a **low** risk that the Local Plan will be subject to the needs of the Strategic Environmental Assessment Regulations provided that the timetable is achieved. This risk is dependant upon the timetable that the Planning Inspectorate can itself achieve. Should the timetable not be achieved, the present NWLP 2001 can be saved until March 2007. A special request to extend the "saved" period until various "landmark" adoption dates for the LDF between Jan 2008 and April 2010 will be required in these circumstances.

The emerging North Wiltshire Local Plan 2011 is subject to the **high** risk of increasing divergence from government policy and advice in the wake of the publication of revised Planning Policy Statements, associated guidance and the emerging South West Regional Spatial Strategy. The LDS has included a programme for completing critical Local Development Documents as priority documents during the period up to 2010.

Other risks of an operational nature are considered and planned for through the operation of North Wiltshire District Council's Planning Services Business Plan 2005/08.

4. Supporting Technical Studies

The following list of studies, by topic area, have been completed and include material that will inform the future preparation of Local Development Documents, the Annual Monitoring Report, Sustainability Appraisal and Strategic Environmental Impact statements in the period up to 2016. Further research has been commissioned in 2006/07 to update this material in respect of housing and employment issues up to the period of 2021.

Housing: The North Wiltshire Urban Capacity Study 2002; the North Wiltshire Review of Urban Capacity Study and Housing Policies Oct 2003 and the North Wiltshire Review of Urban Capacity Study and Housing Policies – Assessment of Housing Sites Dec 2003. The Swindon Housing Market Assessment 2006.

Employment: The North Wiltshire Employment Land Study June 2004; The Employment Land Audit 2006.

Retail: The North Wiltshire Retail Needs Assessment June 2004.

Natural Environment: The North Wiltshire Rural Buffers and Local Rural Buffers Study Oct 2002; the North Wiltshire Landscape Character Assessment June 2004 and the North Wiltshire Landscape Policy Study June 2004.

Community Facilities: The North Wiltshire Open Space Study July 2004.

District Wide Housing Needs Survey 2005 Also, Parish Housing Needs Surveys. North Wiltshire Council is aiming to complete nine of these latter studies per annum.

District Wide Gypsy & Traveller Needs Survey (due to be completed in 2006): This will be undertaken by consultants and include a planning policy site search methodology.

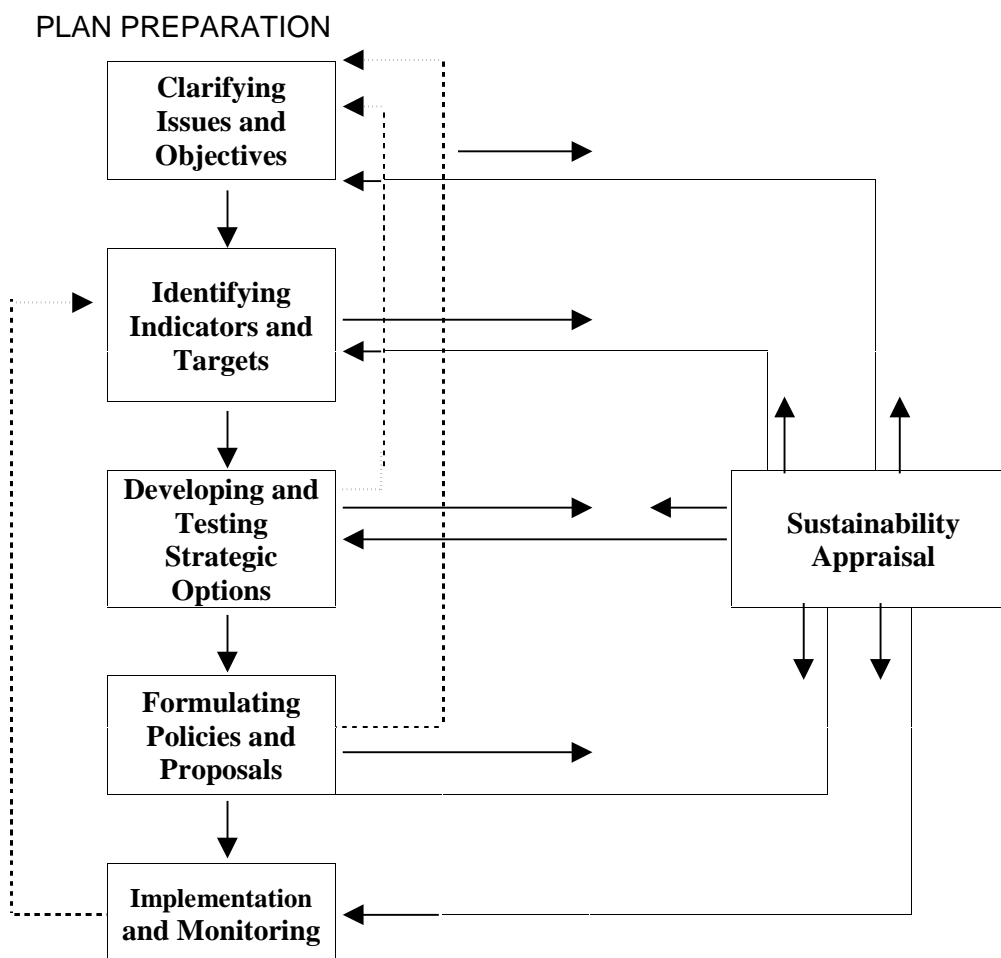
A review of these studies and their continuing relevance will be included within the Annual Monitoring Report and such additional studies commissioned as necessary.

5. Sustainability Appraisal, Monitoring, and Strategic Environmental Assessment

The Sustainability Appraisal

The emerging North Wiltshire Local Plan 2011 has been subject to a Sustainability Appraisal, the results of which are available as a separate document from this Authority. Appraisals take place at each stage of plan preparation in order to ensure that its policies and proposals take us nearer to achieving sustainable development.

North Wiltshire District Council commissioned independent specialist consultants, Nicholas Pearson Associates Ltd, to assist in the design of an appropriate Sustainability Appraisal methodology to apply to the preparation of the Local Plan 2011. The following diagram illustrates the iterative process and the underlying basis of the Sustainability Appraisal which will ensure integration of sustainable development into each stage of preparation of future Local Development Framework documents.



Officers within the Spatial Planning Team have completed a Scoping Report for a Sustainability Appraisal in conjunction with its requirements for a Strategic Environmental Assessment. This document will inform the emerging Local Development Documents. The Scoping Report is available on the Council's website <http://www.northwilts.gov.uk>

The Annual Monitoring Report

An Annual Monitoring Report will be prepared and published in the period September – December of each year. Regular monitoring will be essential to establish how both the Plan and the impending Community Strategy are working in practice, to assess whether the policies set out in them are being sufficiently implemented on the ground and having the desired effect. The results of this monitoring will be used to update policies and to formulate new policies as necessary.

The Community Strategy for North Wiltshire was published in November 2005 and the Local Development Framework will play an important role in delivering the land-use aspects of this Strategy. Accordingly there will be an opportunity to monitor both documents together and any identified changes in circumstances can be reflected in the policies and proposals of both documents.

The Monitoring process for the North Wiltshire Local Plan 2011 is included within that document. This will also form the basis for preparing specific monitoring processes for each Local Development Document produced and as part of the production of those documents. These will also be included within the Annual Monitoring Report.

Strategic Environmental Assessment

Strategic Environmental Assessment is a legal requirement that flows from European Directive 2001/42/EC. The European *Strategic Environmental Assessment* directive requires a formal environmental assessment of certain plans and programmes which are likely to have significant effects on the environment, the directive will therefore apply to certain *Local Development Documents*. The relevant UK regulations are contained within The Environmental Assessment of Plans and Programmes Regulations 2004.

Insofar as the Regulations affect the programme as set out in the Local Development Scheme, the timetable is designed such that no SEA will be required for the emerging North Wiltshire Local Plan 2011 as it is intended that that document will be adopted by the due statutory date of 22nd July 2006.

All other relevant Local Development Documents will require assessment for the need for an Environmental Assessment. Such assessments will be undertaken accordingly. This Authority will follow such good practice.

Sustainability Appraisals include social and economic factors as well as environmental ones covered within the *Strategic Environmental Assessment*. The Council will undertake an integrated approach towards *Sustainability Appraisals* and *Strategic Environmental Assessment* to avoid unnecessary duplication and confusion. *Sustainability Appraisals* will need to be undertaken for each *Local Development Document* to ensure that policies and proposals promote sustainable development.