



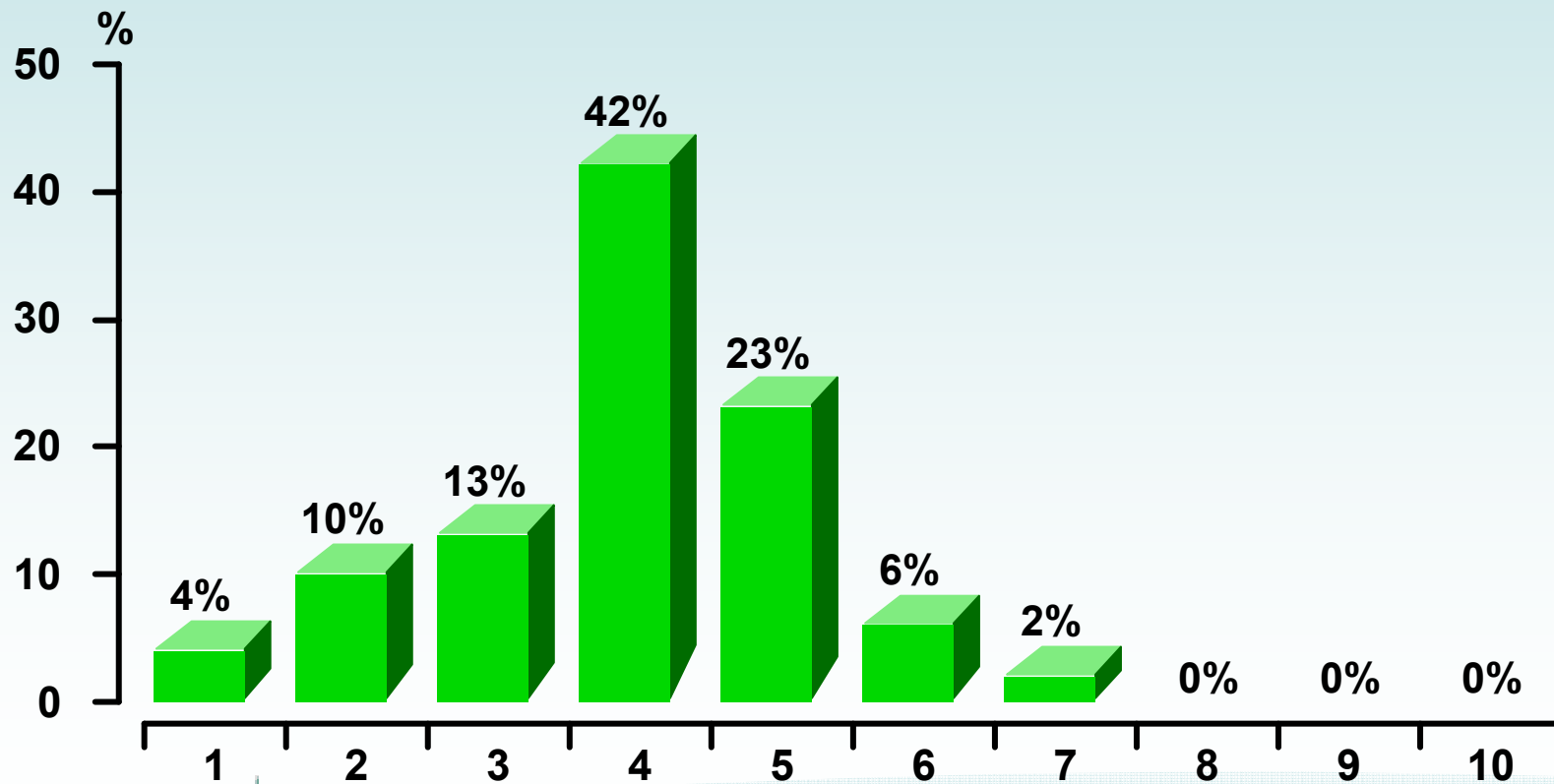
Welcome to Local Democracy Week



Chippenham 16th October



On a scale of 1 -10 how do you think young people are viewed by society? (1 Very Negative - 10 Very Positive) Current session



Wiltshire
COUNTY COUNCIL



SALISBURY
District Council

Chippenham – 16th October

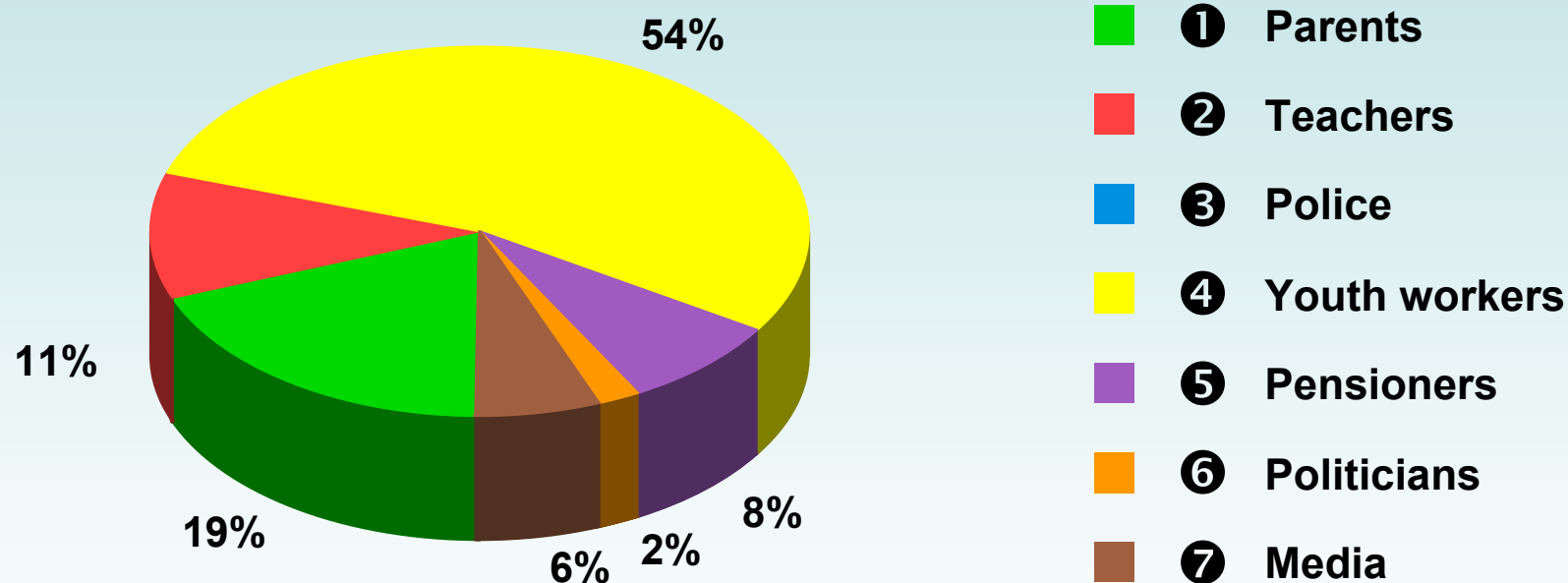


West Wiltshire
DISTRICT COUNCIL

*North
Wiltshire
District
Council*

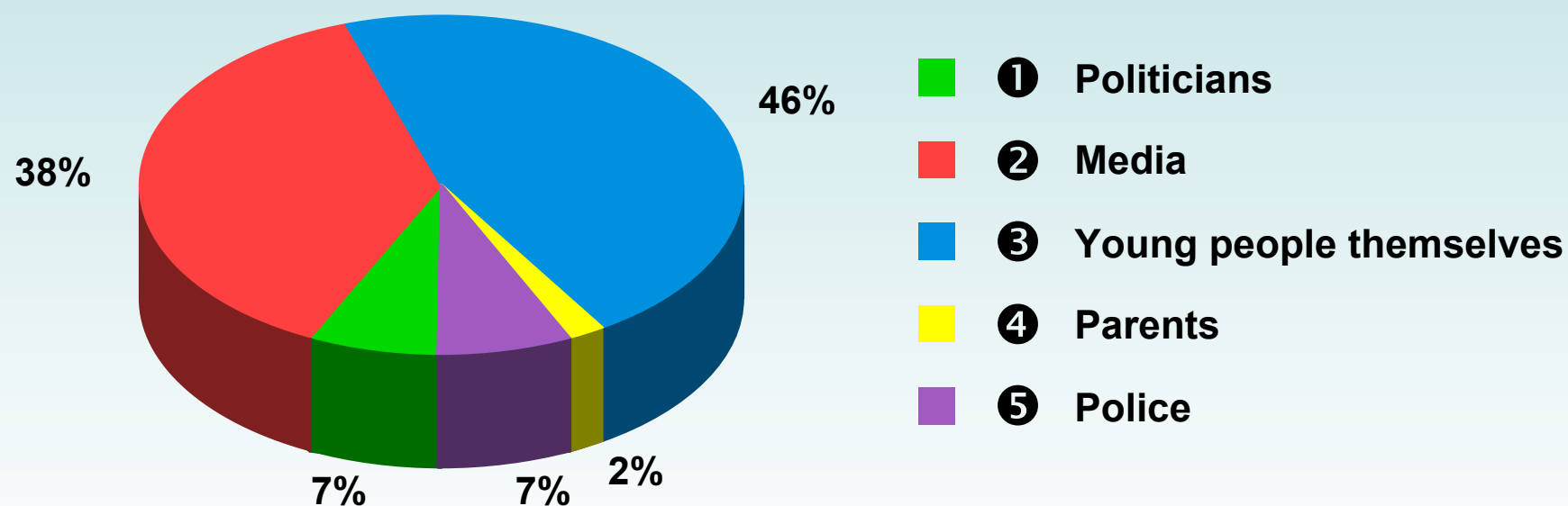


Who do you think has the most positive views of young people? Current session



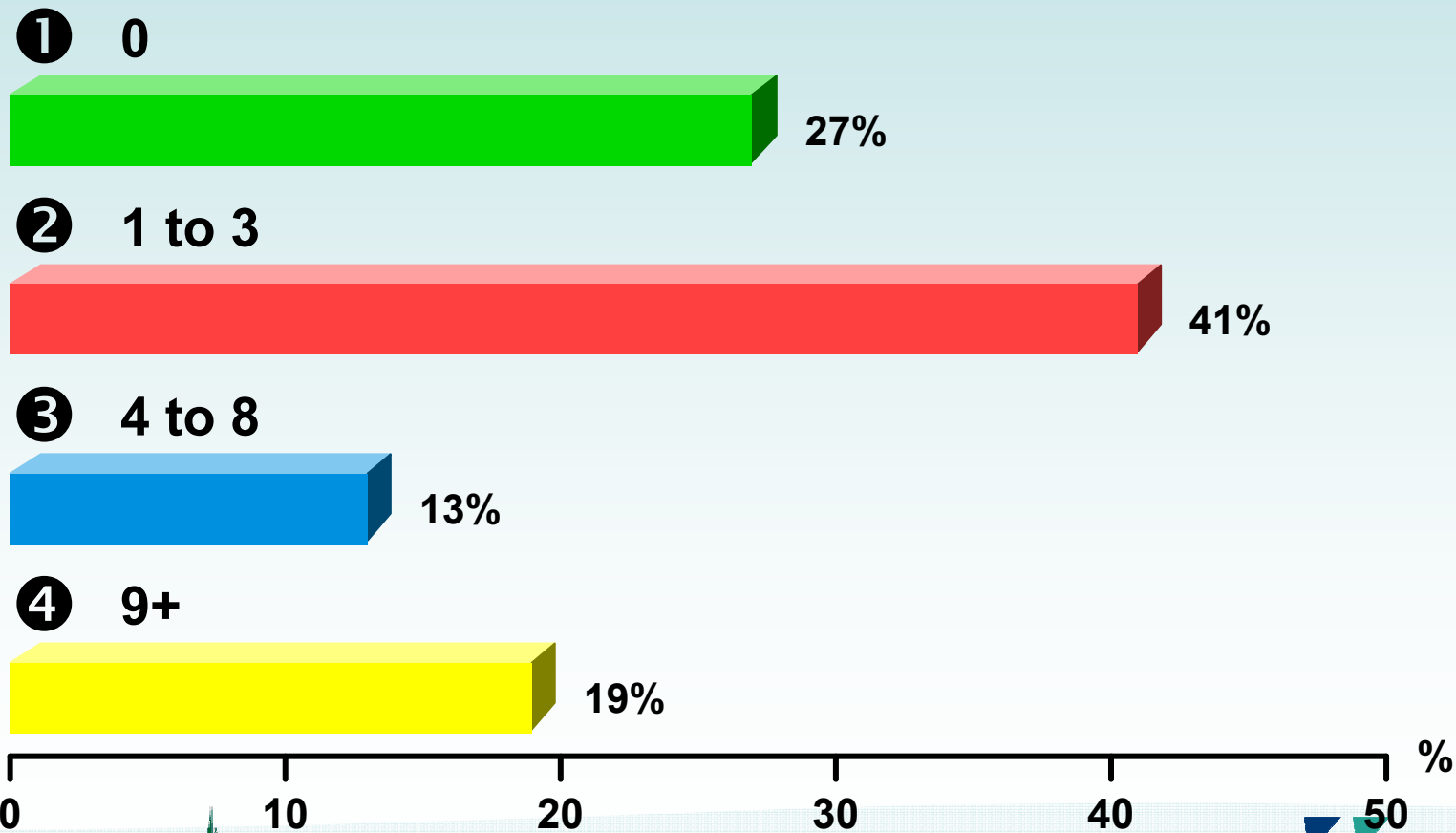


Who do you think has the most power and influence to affect the way young people are viewed? Current session





On average, how many times per week do you use public transport? Current session



Wiltshire
COUNTY COUNCIL



SALISBURY
District Council

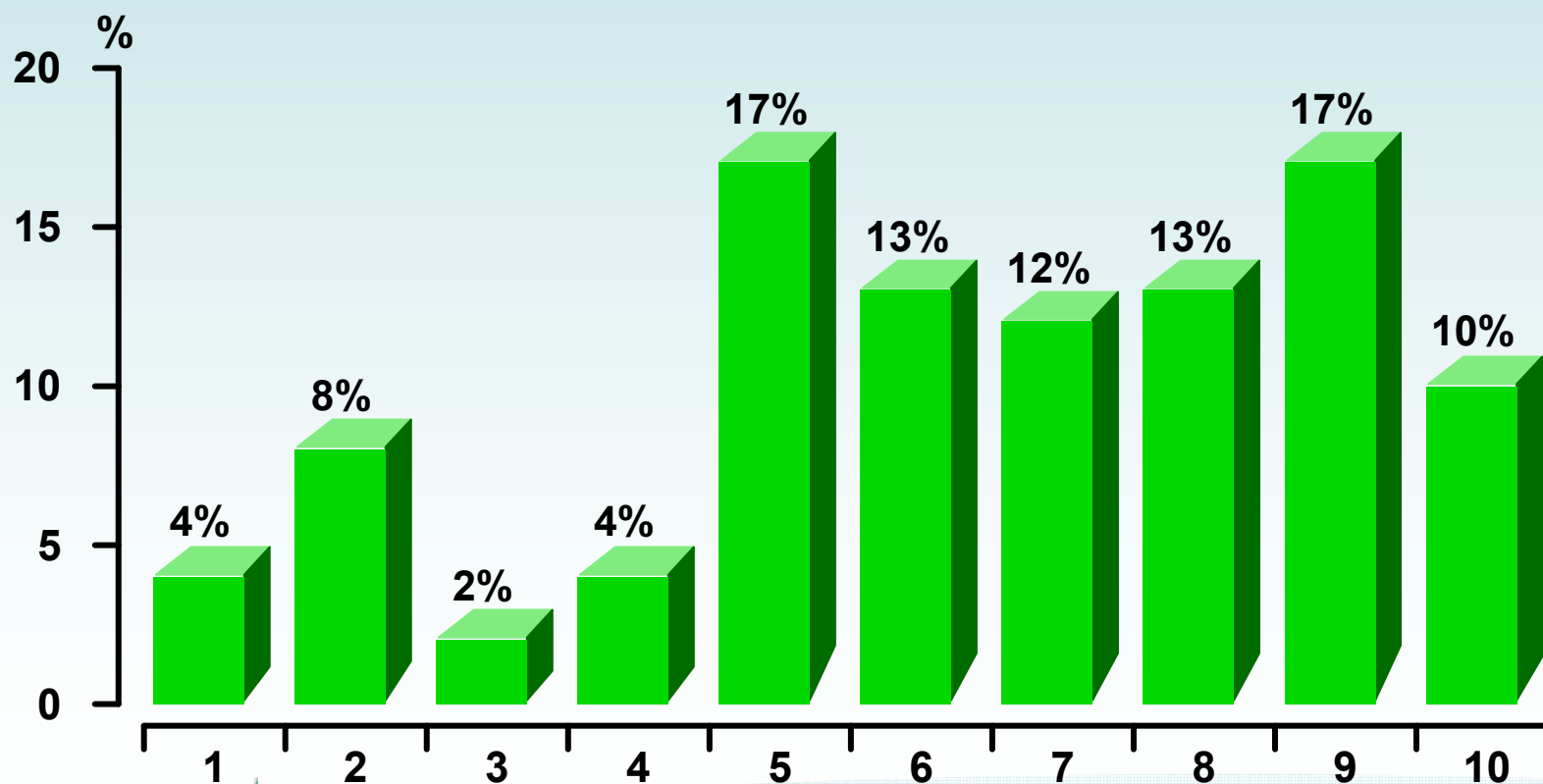
Chippenham – 16th October



*North
Wiltshire
District
Council*



On a scale of 1-10 how easy is it to get around in your local area? (1 Very Difficult - 10 Very Easy) Current session



Wiltshire
COUNTY COUNCIL



SALISBURY
District Council

Chippenham – 16th October

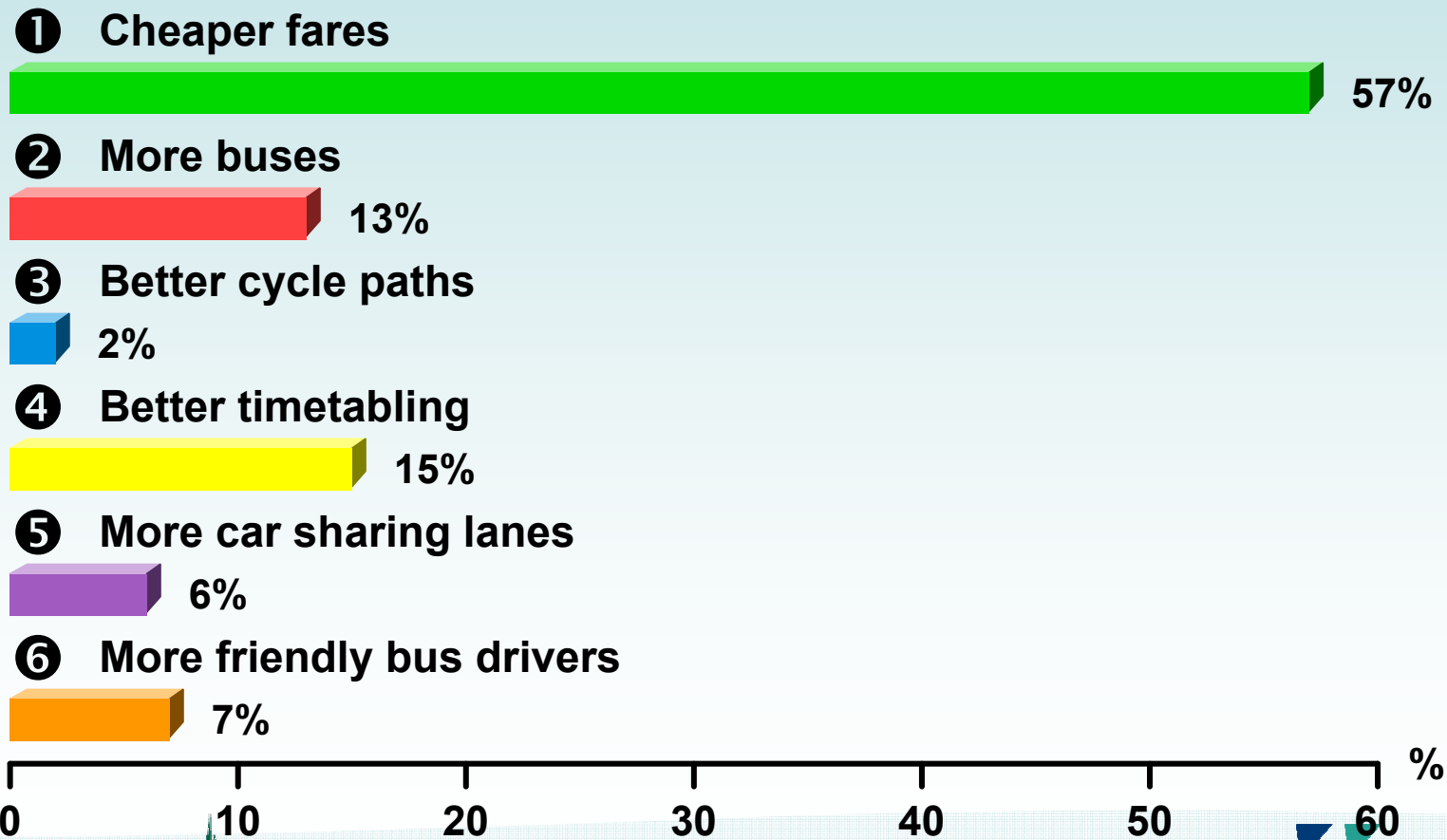


*North
Wiltshire
District
Council*



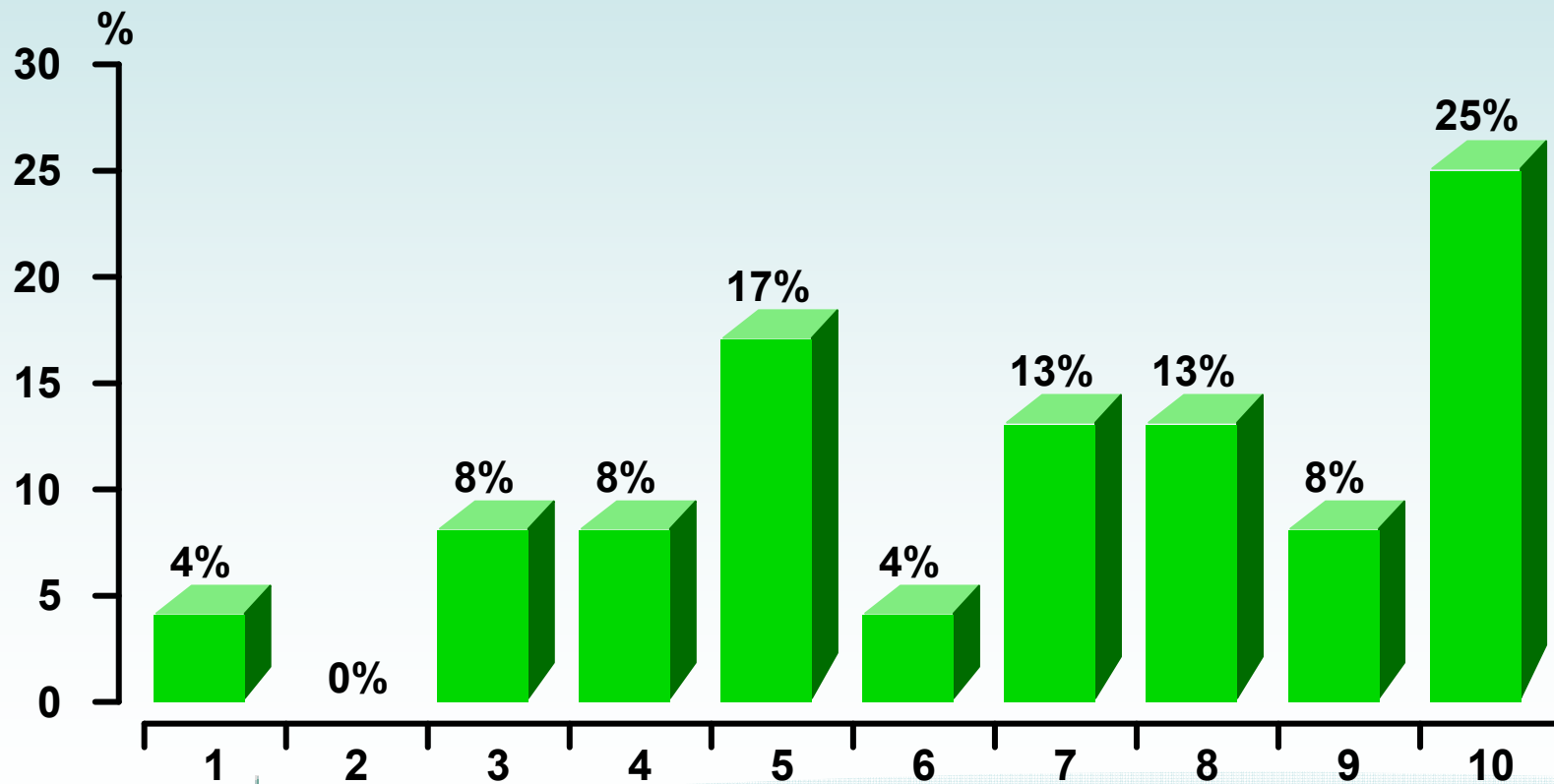
Which one of the following changes would make the most difference in improving transport for you?

Current session





**On a scale of 1-10 how important are
environmental issues to you?
(1 Not important at all - 10 Very Important)
Current session**





Which of the following do you currently do? Yes/No Current session

Recycling paper & glass



Recycling cardboard & plastic



Composting



Ride a bike



Use low energy light bulbs



Not using standby on electrical equipment



1 Yes



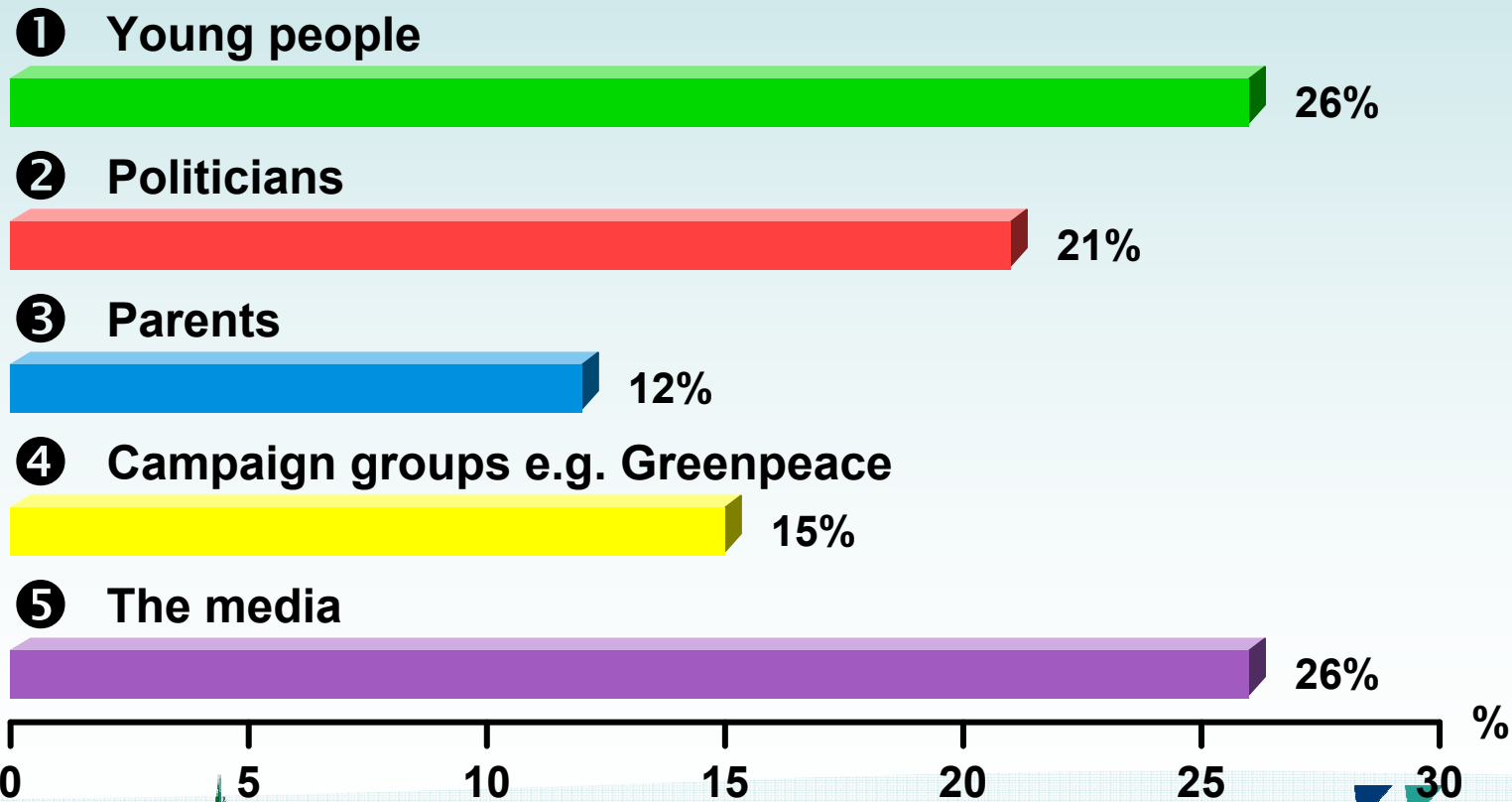
2 No

Chippenham – 16th October



Over the next 5 years, who do you think has the greatest ability to make people more environmentally friendly? (choose 2)

Current session



Wiltshire
COUNTY COUNCIL



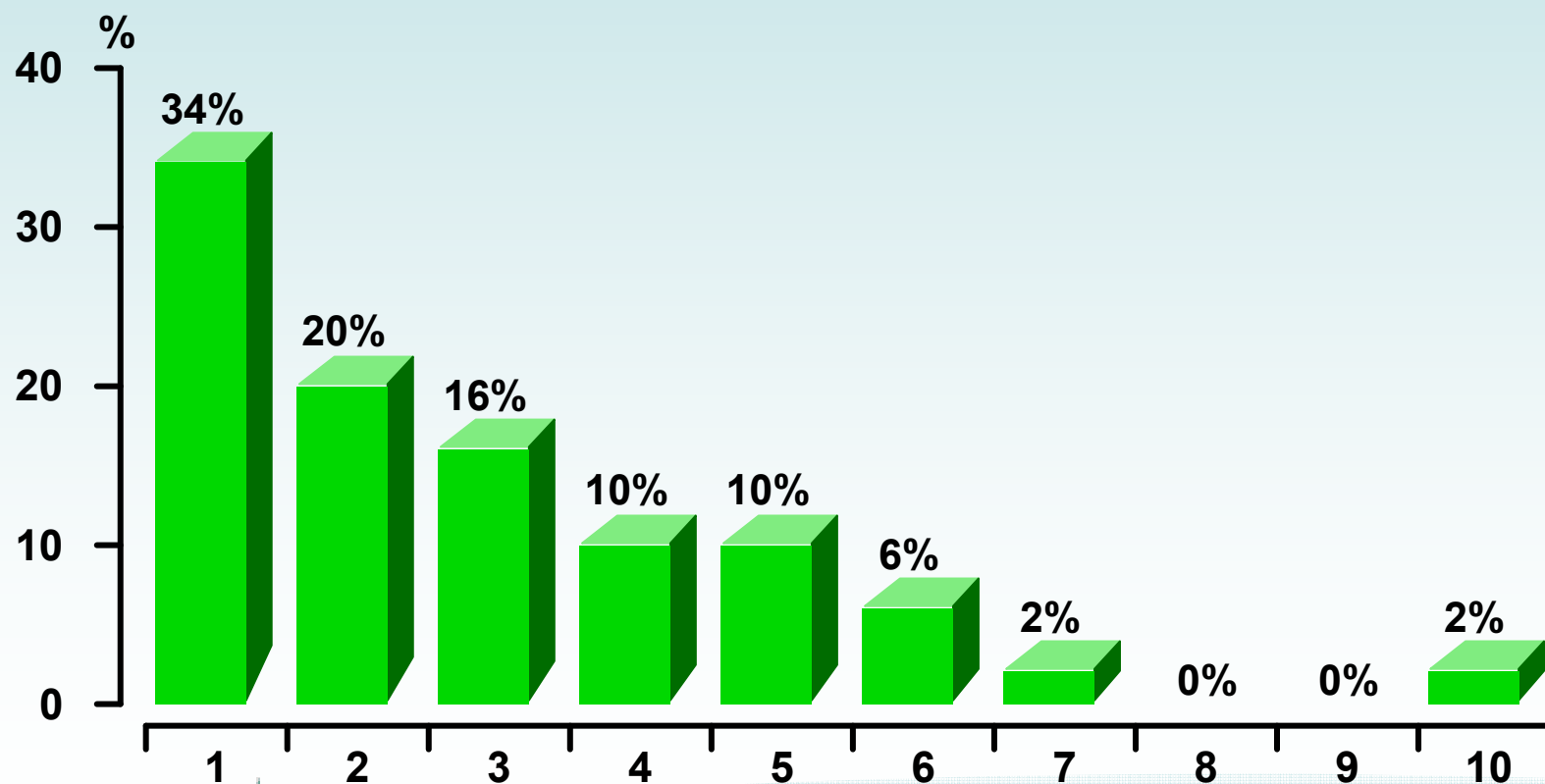
Chippenham – 16th October



*North Wiltshire
District
Council*



On a scale of 1-10 how do you rate the facilities for young people in your local area? (1 Very poor - 10 Very Good) Current session



Wiltshire
COUNTY COUNCIL



SALISBURY
District Council

Chippenham – 16th October



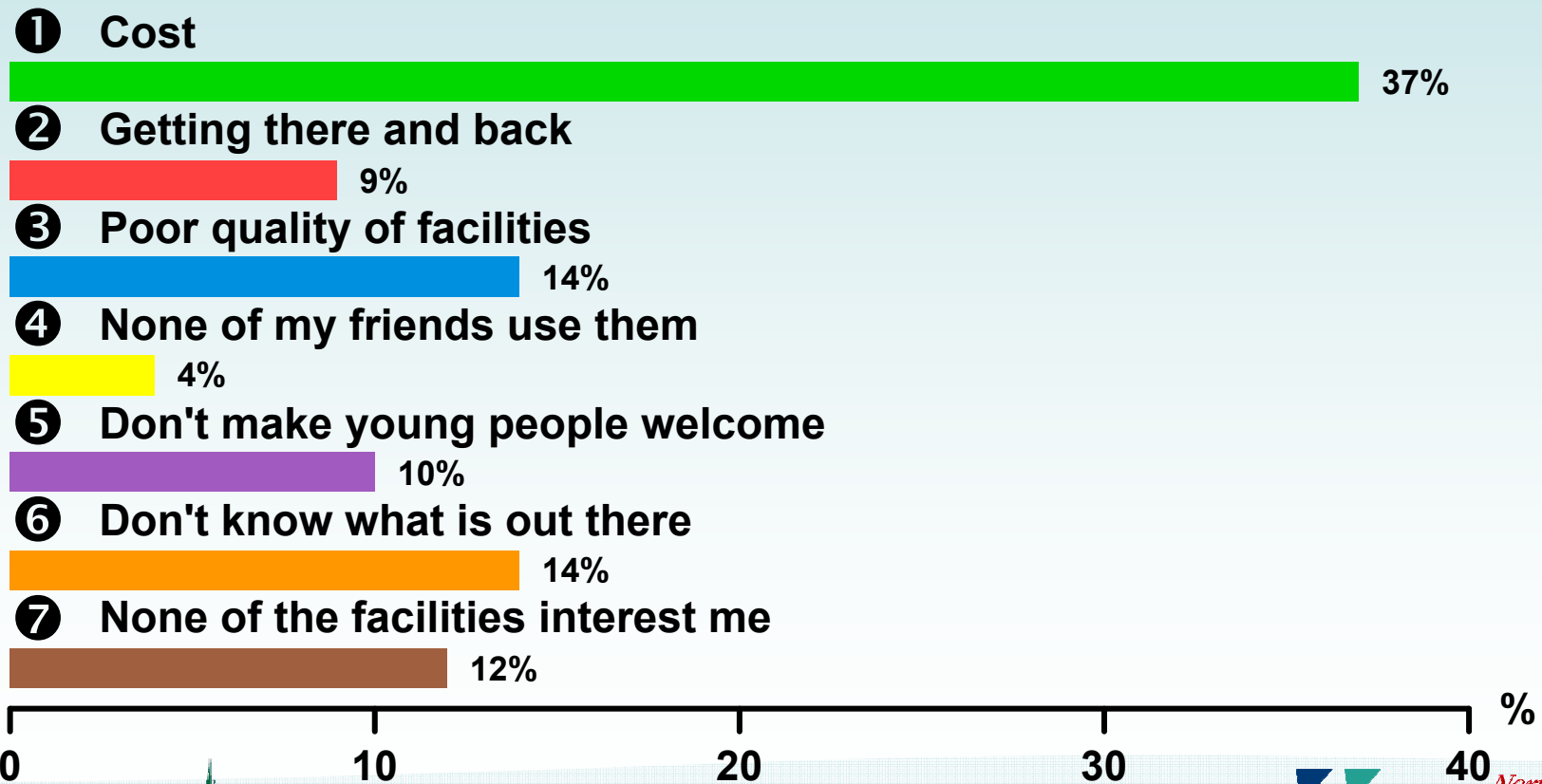
West Wiltshire
DISTRICT COUNCIL

*North Wiltshire
District
Council*



What are the two main things which prevent you from making more use of your local facilities? (choose 2)

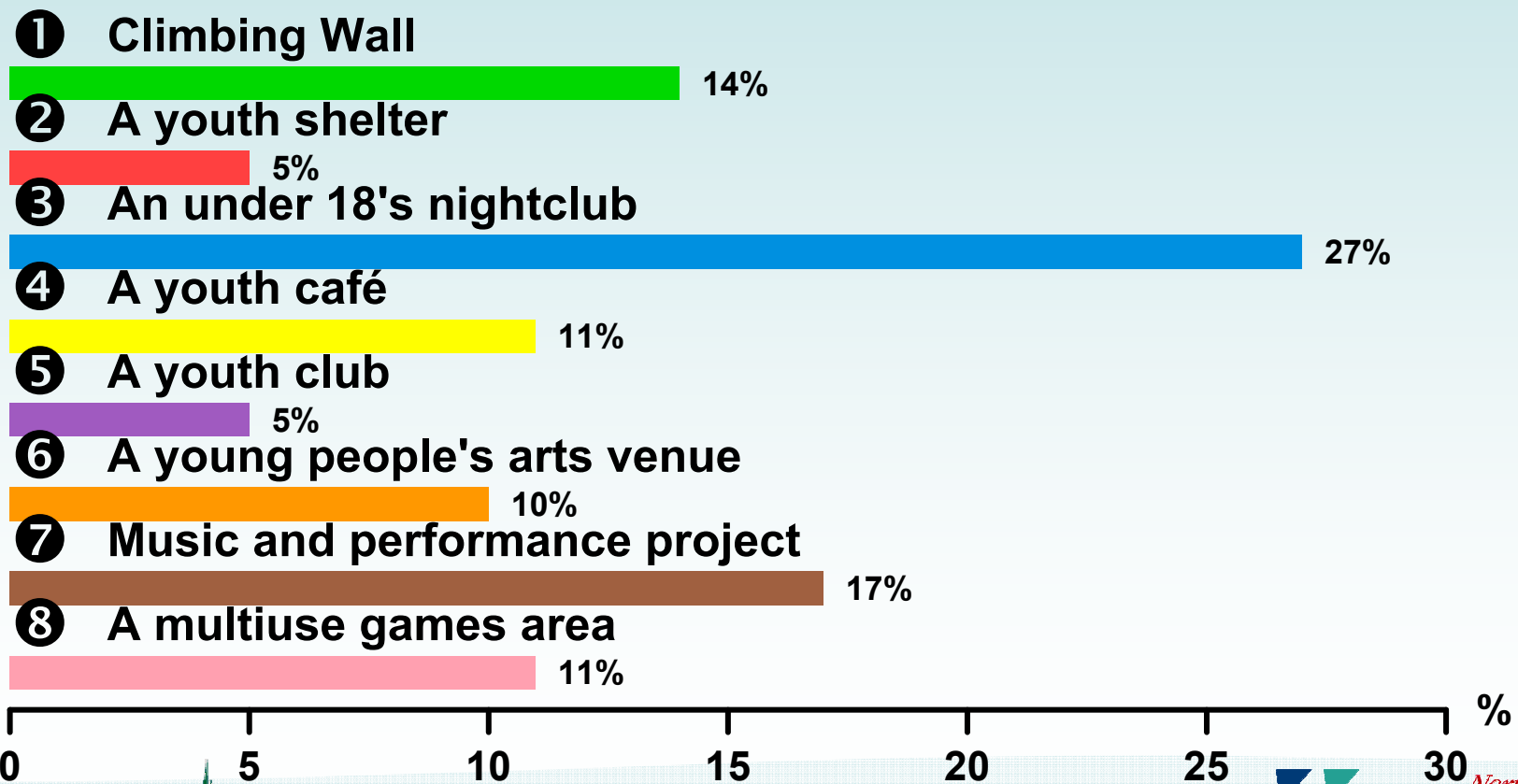
Current session





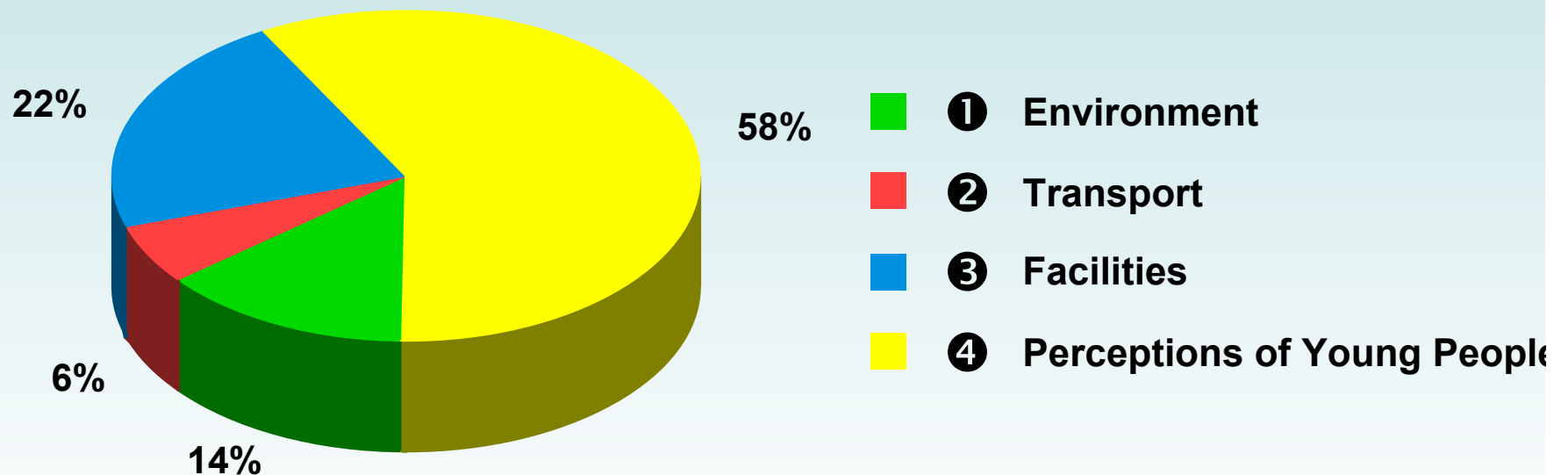
If you could have two of these new facilities in your area, which would you choose? (choose 2)

Current session



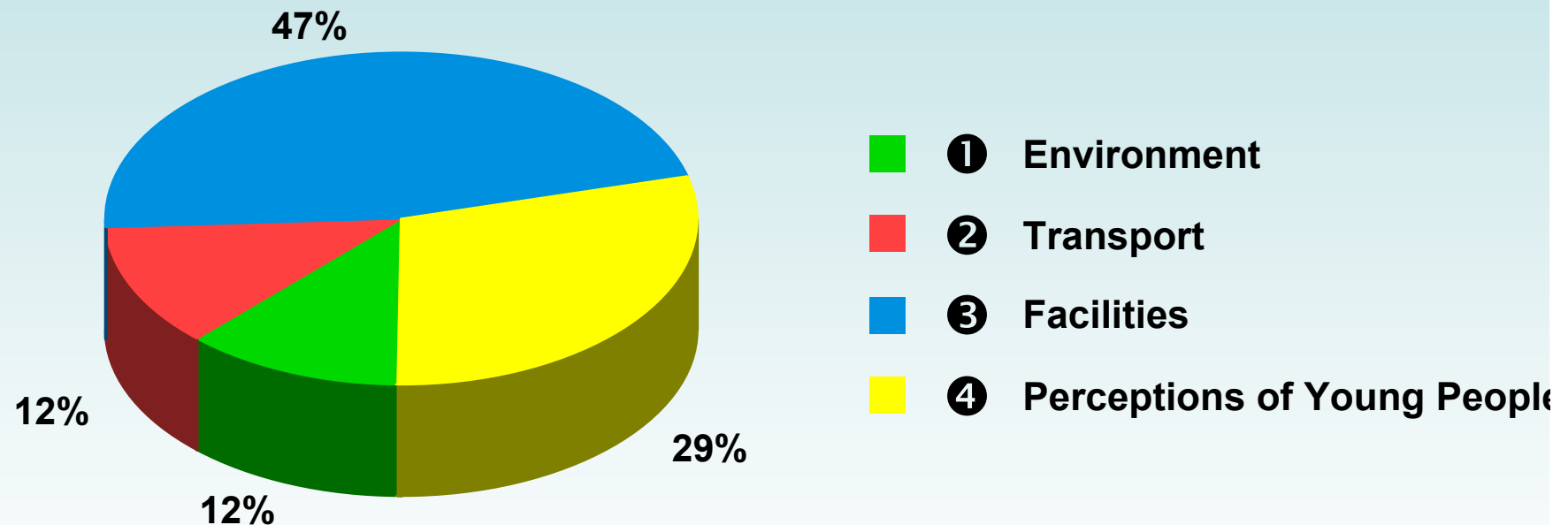


Which of these areas do you think is the easiest for young people to influence? Current session





Which of these areas do you think would affect your life the most if they improved? Current session





Which one of these areas do you most think you should campaign for change on? Current session

