

SCRUTINY ACTION SHEET

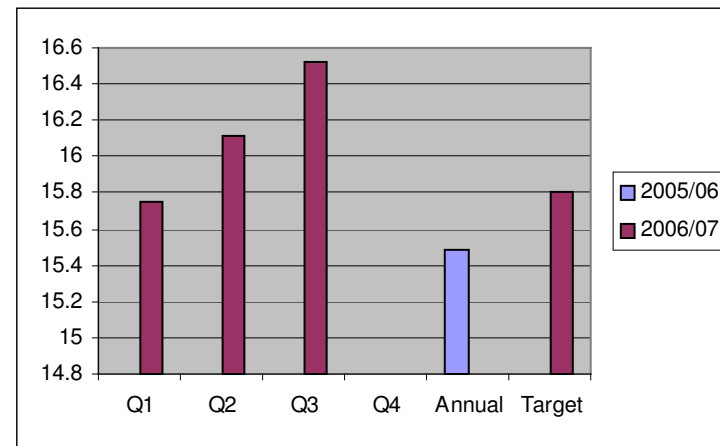
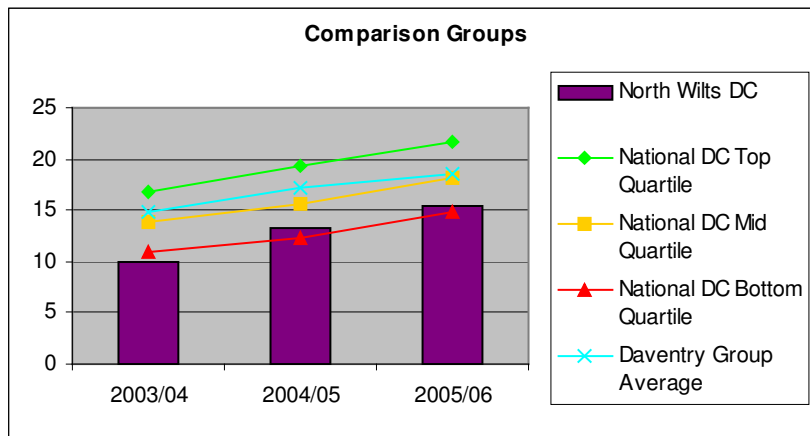
BVPI 82a&b - % of household waste sent for recycling and composting			
Responsible Officer: Steve Bowcock			
Latest performance (see analysis overleaf):			
<p>Recycling (BV82a) has shown a steady improvement over the last 3 years moving from the bottom to 3rd quartile in 2005/06. The proportion of waste sent for recycling (currently 16.2%) has continued to improve in 2006/07. If national levels increase in line with previous year, however, our current performance will be in the bottom quartile. Recent trends suggest that we will need to achieve 17% for dry recycling to move out of the bottom quartile.</p> <p>Composting (BV82b) reduced in 2005/06 from previous year and just remained in the 3rd quartile. Current year performance has shown a marked improvement from 2.86% to 4.71%, although if national levels increase in line with previous year, our current performance will be in the borderline of bottom and 3rd quartile.</p> <p>Overall Recycling (BV82a+b) - Current recycling rate of 20.83% in excess of our local target of 19%. There is no DEFRA target for 2006/07, but the target for 2007/08 is 20% which we are on line to meet and exceed.</p>			
Reason(s) for current performance:			
As more authorities move to Alternate Week Collections (AWCs) the benchmark will continue to rise, without making this move NWDC will continue to lag behind. It is hoped that the introduction of AWC should move NWDC out of the bottom quartile.			
Forecast performance (What level? By when? National comparison?):			
<p>Once NWDC move to AWCs, in line with the Wiltshire Waste Partnership Business Plan our rates should increase accordingly, an estimate of a 30% recycling rate. Due to constraints of the capacity of the Wiltshire County Council's contractor, Hills Waste NWDC will not be able to introduce AWC in 2007/08, but will need to wait until 2008/09.</p> <p>An additional vehicle will be introduced with effect from 1st April 2007 for garden waste collections. This will enable an extra 3,300 customers to join the service and will increase the amount of waste composted, it is expected that this should increase the rate by 1.5%. As NWDC are hoping, due to public demand, to introduce AWC with plastics and cardboard, it is unknown as to the likely weights that this is going to produce, therefore the estimate is cautious.</p>			
Action Plan:			
Action	Impact (<i>how will this help?</i>)	Who?	When?
Introduction of second garden waste collection vehicle.	Increase composting recycling rates, by approximately 1.5%.	Steve Bowcock	2007/08

Introduction of AWCs.		Increase dry recycling rates, and decrease waste for landfill to approximately 30%.	Steve Bowcock	2008/09
Reviewed by:	Lead Member		Date:	
	Strategic Manager		Date:	
	Scrutiny		Date:	
Next review date:				

BVPI 82a - % of household waste sent for recycling

Comparison Group	2003/04	2004/05	2005/06
National DC Top Quartile	16.86	19.35	21.72
National DC Mid Quartile	13.86	15.60	18.15
National DC Bottom Quartile	10.85	12.36	14.79
Daventry Group Average	14.9	17.2	18.6
North Wilts DC	9.89	13.27	15.49

Quarterly performance in 06/07, compared to 05/06						
	Q1	Q2	Q3	Q4	Annual	Target
2005/06					15.49	
2006/07	15.75	16.11	16.52			15.8
% change	#####	#####	#####	#####	-100	#DIV/0!



BVPI 82b - % of household waste composted

Comparison Group	2003/04	2004/05	2005/06
National DC Top Quartile	5.14	10.56	14.67
National DC Mid Quartile	1.8	4.28	8.29
National DC Bottom Quartile	0	0.40	2.68
Daventry Group Average	4.1	11.7	14.81
North Wilts DC	1.56	2.99	2.86

Quarterly performance in 06/07, compared to 05/06						
	Q1	Q2	Q3	Q4	Annual	Target
2005/06					2.86	
2006/07	4.44	4.6	5.15			3.2
% change	#####	#####	#####	#####	-100	#DIV/0!

