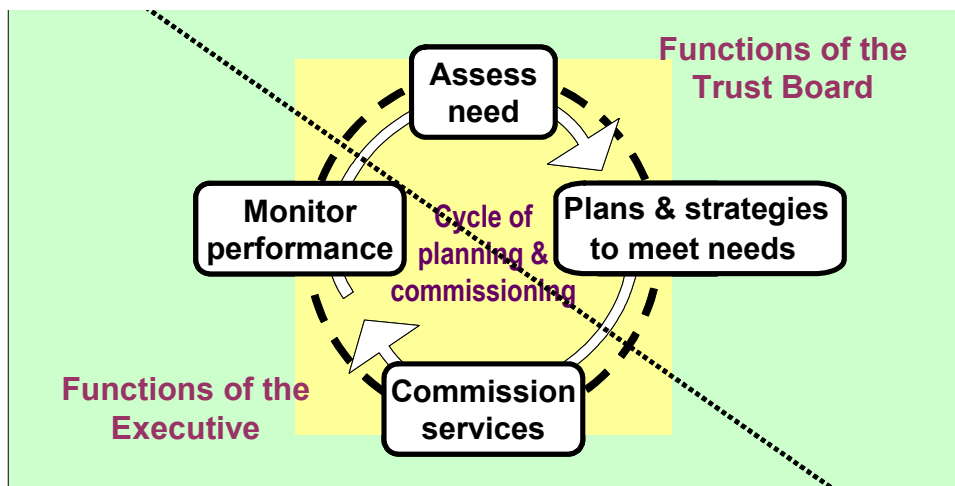


Children & Young People's Trust Board

Trust Board Governance and Structure

Together the Children & Young People's Trust Board for Wiltshire and its Executive have responsibility for the achievement of the Trust's aim *"To improve outcomes for children & young people in Wiltshire and to promote and support resilient individuals, families and communities."*, through strategic leadership and commissioning¹.

The division of functions between the Trust Board and the Executive within the commissioning cycle is as illustrated below:



The relationship between the Trust Board and the Executive is one of the Board holding the Executive to account.

Children & Young People's Trust Board for Wiltshire	
Functions	<p>Having regard to the Trust Board's statement of Vision & Values:</p> <ul style="list-style-type: none"> To maintain (review and update) an assessment of need in relation to the achievement of the five "Every Child Matters" outcomes by children & young people in Wiltshire. To maintain (review and update) a Children and Young People's Plan for Wiltshire and related strategies, and make recommendations for the development of services. To promote the engagement of all stakeholders in contributing to the development and implementation of the Children and Young People's Plan for Wiltshire. To monitor the Trust Board Executive in its implementation of the Children and Young People's Plan and related strategies and services.

¹ **Commissioning** is used here to mean the process of assessing need, setting priorities, planning and re-shaping services, including (but not exclusively) through contracting. It must aim to achieve more for children by applying evidence-based standards and reducing duplication.

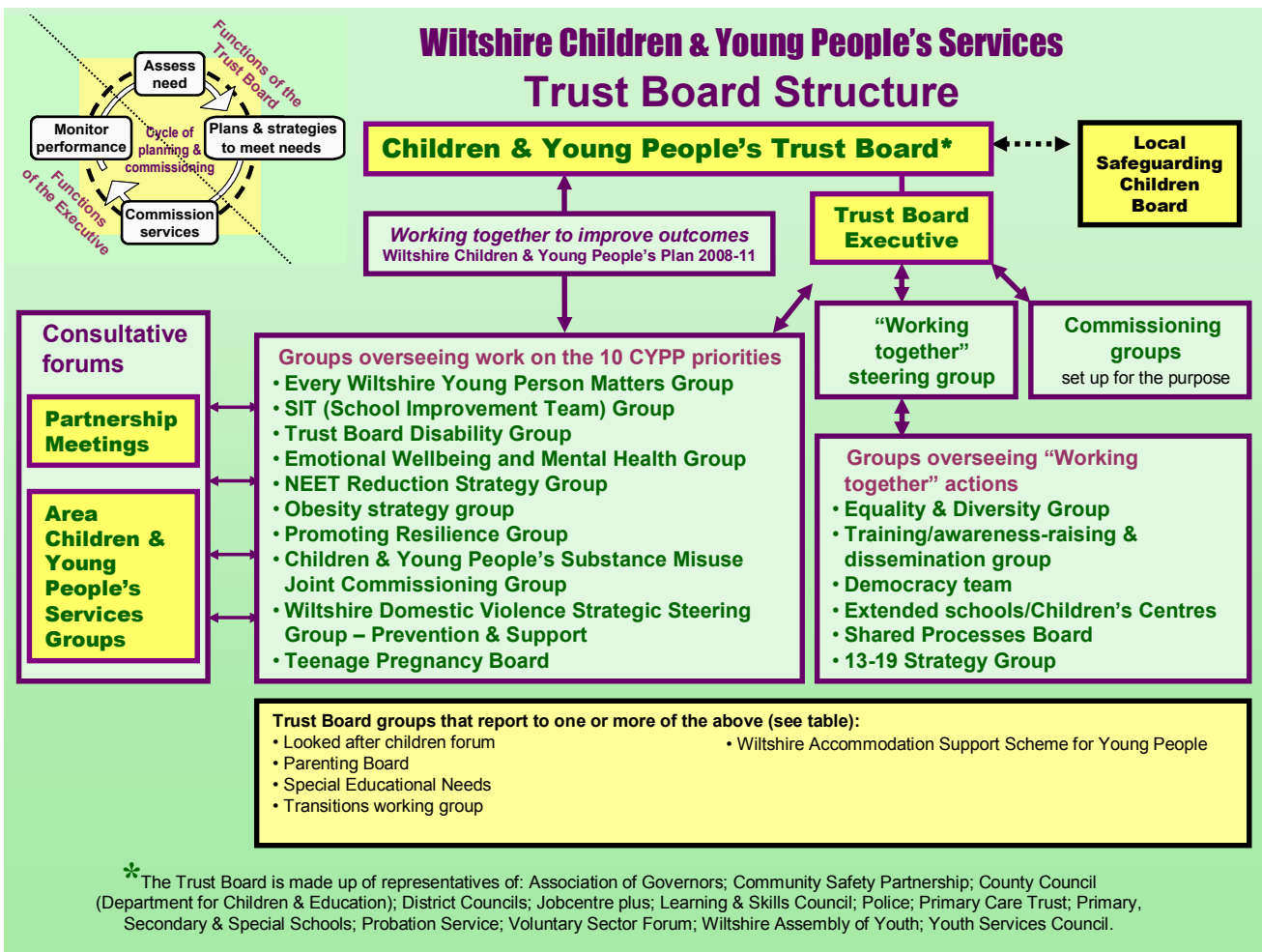
For more information see: www.WiltshirePathways.org/Trust

Mechanisms	<ul style="list-style-type: none"> • Meetings 3 times a year. • A Trust Board “day” to explore major issues. • Working groups (relating to each of the 10 priorities of the Children and Young People’s Plan) reporting to the Board. • Reports from the Trust Board Executive.
Membership	<p>The Trust Board is a large representative group with a membership as follows:</p> <ul style="list-style-type: none"> Lead Member Director of Children’s Services 3 Department for Children & Education 4 NHS Wiltshire 1 Community Health Services 1 Police 1 Youth Offending Service 1 Probation 1 Connexions service 1 Learning & Skills Council 1 Community Safety 1 Jobcentre plus 1 Army 1 Fire & Rescue Service 1 Leisure 1 Housing services 3 Headteacher reps 1 Schools Forum 3 Councillors 3 parent reps 3 reps of young people; 3 reps of voluntary & community sector <p style="text-align: right;"><i>Total = 37</i></p>

Trust Board Executive	
Functions	<p>To implement the Children and Young People’s Plan and related strategies agreed by the Trust Board by:</p> <ul style="list-style-type: none"> • developing, maintaining and implementing commissioning plans (aligned or joint, where appropriate) • monitoring performance against these plans and reporting to the Trust Board .
Mechanisms	<ul style="list-style-type: none"> • Monthly meetings.

For more information see: www.WiltshirePathways.org/Trust

	<ul style="list-style-type: none"> • “Priorities” working groups [see above] • Commissioning groups and “Working together” Steering Group
Membership	<p>A small group of senior offices accountable for commissioning:</p> <ul style="list-style-type: none"> Lead Member (chair) Director of Children’s Services 3 Service Directors (Department for Children & Education) 1 Army 2 Health 1 Police 1 Probation 1 Voluntary sector 1 Learning & Skills Council 1 Community Safety Partnership 1 Schools forum <p style="text-align: right;"><i>Total = 14</i></p>



For more information see: www.WiltshirePathways.org/Trust