

AGENDA

Meeting: Salisbury Area Board
Place: Alamein Suite, City Hall, Malthouse Lane, Salisbury, SP2 7TU
Date: Thursday 26 September 2019
Time: 7.00 pm

The Area Board welcomes and invites contributions from members of the public. The chairman will try to ensure that everyone who wishes to speak will have the opportunity to do so.

If you have any requirements that would make your attendance at the meeting easier, please contact your Democratic Services Officer.

Refreshments and networking opportunity from 6:30pm .

Please direct any enquiries on this Agenda to Lisa Moore (Democratic Services Officer), direct line 01722 434560 or email lisa.moore@wiltshire.gov.uk

All the papers connected with this meeting are available on the Council's website at www.wiltshire.gov.uk

Press enquiries to Communications on direct lines (01225) 713114 / 713115.

Wiltshire Councillors

Cllr Sven Hocking, St Martin's and Cathedral (Chairman)
Cllr Derek Brown OBE, St Mark's and Bishopdown
Cllr Brian Dalton, Harnham
Cllr Matthew Dean, St Paul's
Cllr Mary Douglas, St Francis and Stratford
Cllr Atiquel Hoque, St Edmund and Milford (Vice-Chairman)
Cllr Ricky Rogers, Bemerton
Cllr John Walsh, Fisherton and Bemerton Village

RECORDING AND BROADCASTING NOTIFICATION

Wiltshire Council may record this meeting for live and/or subsequent broadcast on the Council's website at <http://www.wiltshire.public-i.tv>. At the start of the meeting, the Chairman will confirm if all or part of the meeting is being recorded. The images and sound recordings may also be used for training purposes within the Council.

By entering the meeting room you are consenting to being recorded and to the use of those images and recordings for broadcasting and/or training purposes.

The meeting may also be recorded by the press or members of the public.

Any person or organisation choosing to film, record or broadcast any meeting of the Council, its Cabinet or committees is responsible for any claims or other liability resulting from them so doing and by choosing to film, record or broadcast proceedings they accept that they are required to indemnify the Council, its members and officers in relation to any such claims or liabilities.

Details of the Council's Guidance on the Recording and Webcasting of Meetings is available on request.

Parking

To find car parks by area follow [this link](#). The three Wiltshire Council Hubs where most meetings will be held are as follows:

County Hall, Trowbridge
Bourne Hill, Salisbury
Monkton Park, Chippenham

County Hall and Monkton Park have some limited visitor parking. Please note for meetings at County Hall you will need to log your car's registration details upon your arrival in reception using the tablet provided. If you may be attending a meeting for more than 2 hours, please provide your registration details to the Democratic Services Officer, who will arrange for your stay to be extended.

Public Participation

Please see the agenda list on following pages for details of deadlines for submission of questions and statements for this meeting.

For extended details on meeting procedure, submission and scope of questions and other matters, please consult [Part 4 of the council's constitution](#).

The full constitution can be found at [this link](#).

For assistance on these and other matters please contact the officer named above for details

	Time
1 Welcome and Introductions	7.00pm
2 Apologies for Absence	
3 Minutes (<i>Pages 7 - 20</i>) To confirm the minutes of the meeting held on Thursday 4 th July 2019.	
4 Declarations of Interest To receive any declarations of disclosable interests or dispensations granted by the Standards Committee.	
5 Chairman's Updates The Chairman will give an update on outcomes and actions arising from previous meetings of the Area Board.	
6 Information items (<i>Pages 21 - 32</i>) a. Office of the Police and Crime Commissioner b. Healthwatch Wiltshire c. Clinical Commissioning Group d. Wiltshire Council e. Consultations Online	
7 Partner and Community Updates (<i>Pages 33 - 52</i>) To note the written updates attached to the agenda and to receive any verbal updates from representatives present. a) Salisbury City Council (SCC) b) Laverstock and Ford Parish Council c) Office of the Police & Crime Commissioner - online d) Police e) Fire f) Salisbury BID g) Community Engagement Manager h) Air Quality Group <i>Note: Speakers are reminded that they each have a 3 minutes slot, unless they have previously discussed alternative arrangements with the Chairman.</i>	7.15pm

- 8 **Co-Bikes Electric Bike Scheme (Pages 53 - 56)** **7.40pm**
- A presentation on the Co-Bikes extensive electric bike hire scheme which is proposed for the city.
- Speaker: Benji Goehl, Director of Co-Bikes*
- 9 **High Street Fund Update** **8.00pm**
- An update on the High Street Fund bid.
- Officer: Victoria Moloney, Head of Southern Wiltshire Economic Recovery*
- 10 **Central Area Framework Update** **8.05pm**
- An update on the progress of the Central Area Framework.
- Officer: Tom Dobrashian, Programme Director, Economic Recovery*
- 11 **Maltings and Central Carpark Development Update** **8.10pm**
- An update on the Maltings and Central Carpark Development.
- Officer: Richard Walters, Head of Service, Major Projects*
- 12 **Area Board Funding (Pages 57 - 78)** **8.15pm**
- To consider applications for funding, as detailed in the attached report.

Community Area Grants - budget remaining - £65,703.58

Applicant	Amount requested
Applicant: Alderbury Football Club Project Title: Alderbury FC Pavilion Interiors View full application	£5000.00
Applicant: Foragers Farm Project Title: The Foyer Therapeutic Kitchen Garden View full application	£3100.00

Applicant: Buzz Action Foundation Project Title: Roadshow Equipment	£1000.00
View full application	
Applicant: Alabare Christian Care and Support Project Title: Alabare Place Defibrillator	£988.80
View full application	
Applicant: Safer & Supportive Salisbury Project Title: Lighting to main pathway to St Johns Place Community Centre	£1850.00
View full application	
Applicant: The Secret Garden Salisbury Project Title: Go Wild at Five Rivers	£5688.00
View full application	

Youth Funding – budget remaining £25,285.00

Applicant	Amount requested
Applicant: Barford Hornets Football Club Project Title: Barford Hornets Football Club	£987.00
View full application	

Health and Wellbeing Funding – budget remaining £11,728.50

Applicant	Amount requested
Applicant: Salisbury Repair Cafe Project Title: Salisbury Repair Cafe	£1000.00
View full application	
Applicant: Friends of Salisbury Medical Practice Project Title: Community Family Fitness Programme	£584.00
View full application	

Applicant: Salisbury Museum Project Title: Well City Consultation Workshops View full application	£450.00
Applicant: Safer & Supportive Salisbury Project Title: Carers Showcase View full application	£500.00
Applicant: Older People's Champion Project Title: Financial Abuse Seminar Paper application included in Area Board Agenda	£500.00
Applicant: Happy Café (Action for Happiness) Project Title: Happy Café Salisbury Paper application included in Area Board Agenda	£350.00

13 **Close**

9.00pm

The date of the next meeting is Monday 4th November 2019, 7.00pm at City Hall, Salisbury.

MINUTES

Meeting: SALISBURY AREA BOARD
Place: Alamein Suite, City Hall, Malthouse Lane, Salisbury, SP2 7TU
Date: 4 July 2019
Start Time: 7.00 pm
Finish Time: 9.13 pm

Please direct any enquiries on these minutes to:

Lisa Moore (Democratic Services Officer), Tel: 01722 434560 or (e-mail) lisa.moore@wiltshire.gov.uk

Papers available on the Council's website at www.wiltshire.gov.uk

In Attendance:

Wiltshire Councillors

Cllr Sven Hocking (Vice-Chairman), Cllr Derek Brown OBE (Chairman),
Cllr Brian Dalton, Cllr Matthew Dean, Cllr Mary Douglas, Cllr Atiquil Hoque,
Cllr Ricky Rogers and Cllr John Walsh

Cllr Pauline Church in attendance

Wiltshire Council Officers

Lisa Moore, Democratic Services Officer
Marc Read, CEM - Salisbury
Victoria Moloney, Head of SW Economic Recovery Team
Richard Walters, Head of Service - Major Projects
Tom Dobrashian, Programme Director, Economic Recovery

Town and Parish Councils

Laverstock and Ford Parish Council

Partners

Wiltshire Police – Inspector Pete Sparrow & PC Alan Cromwell
Dorset & Wiltshire Fire and Rescue – Neil McConchie

Total in attendance: 35

<u>Agenda Item No.</u>	<u>Summary of Issues Discussed and Decision</u>
41	<p><u>Election of a Chairman - 2019/20</u></p> <p>The Democratic Services Officer opened the meeting and called for nominations for Chairman for 2019/20.</p> <p>Cllr Douglas nominated Cllr Sven Hocking. This was seconded by Cllr Hoque</p> <p><u>Decision</u> Councillor Sven Hocking was elected as Chairman of the Salisbury Area Board for 2019/20.</p>
42	<p><u>Election of a Vice-Chairman - 2019/20</u></p> <p style="text-align: center;">Cllr Sven Hocking in the Chair</p> <p>Nominations for Vice-Chairman were sought.</p> <p>Cllr Brown nominated Cllr Hoque. This was seconded by Cllr Douglas.</p> <p><u>Decision</u> Councillor Hoque was elected as Vice-Chairman of the Salisbury Area Board for 2019/20.</p>
43	<p><u>Welcome and Introductions</u></p> <p>The Chairman welcomed everyone to the meeting of the Salisbury Area Board and invited the members of the Board to introduce themselves.</p>
44	<p><u>Apologies for Absence</u></p> <p>Apologies for absence had been received from:</p> <ul style="list-style-type: none"> • Robin McGowan – Salisbury BID
45	<p><u>Minutes</u></p> <p><u>Decision</u> The minutes of the meeting held on Thursday 16 May 2019 were agreed as a correct record and signed by the Chairman.</p>
46	<p><u>Declarations of Interest</u></p> <p>Councillor Mary Douglas declared a non-pecuniary interest in relation to Item 13 – Area Board Funding due to an acquaintance with the grant applicants for God Unlimited and The Friary Youth Club. Cllr Douglas took part in the discussion</p>

	and voted on the applications.
47	<p><u>Chairman's Updates</u></p> <p>The Chairman gave the following updates:</p> <ul style="list-style-type: none"> • The new Group Leader of Conservative Party was Cllr Phillip Whitehead. The election of the new Leader of Wiltshire Council would take place at the Full Council meeting next Tuesday 9 July. • National Armed Forces Day – Was a huge success, with 27,000 people in attendance on Saturday. • Bus Stops – The situation of the bus stops which had been installed as part of an Area Board initiative was that there was little that could be done to rectify the problem of rain coming through at the top. The Board had been advised that they could not be modified, and as there were no additional funds available to re-vamp or replace the installation with an alternative product, they would remain in place until more funding was available. <p>Mr Brown stated that he felt the situation was unacceptable. He asked the Board to go back to the company that had provided the shelters to complain that they were not fit for purpose, as they allowed rain to come through.</p> <p>Cllr Dean suggested that as the Board had done all it could, that Mr Brown could write to the company if he wished.</p> <p>Cllr Rogers noted that as they were purchased with a capital grant from the Board, could the Board look for some guidance on what could be done to improve them and at what cost?</p> <p>Action: Cllr Hocking to liaise with Highways to establish if works could be undertaken to improve the design of the shelters, and will feedback to a future meeting.</p>
48	<p><u>Information items</u></p> <p>The Board noted the written updates attached to the agenda:</p> <p>Cllr Dean – The Electoral Commission website details a consultation specifically of the Southern Wiltshire.</p>
49	<p><u>Partner and Community Updates</u></p> <p>The Board received the following verbal updates from Partners present:</p>

Laverstock & Ford PC

Philipa crook new ranger of the country park, now in post.

Work on the boardwalk in Laverstock was taking place soon

A new play area was underway at Virginia way

The Neighbourhood Plan was proceeding, resident consultation was about to start.

Police – Inspector Sparrow

National Armed Forces Day weekend only saw one arrest for a minor offence.

Local area update was circulated at the meeting.

The Police had carried out a successful warrant this week, which resulted in removing £10k of cannabis off the streets.

There had been successful convictions of 6 months terms following two incidents of Police assault.

A man had been charged with the attempted theft of the Magna Carter.

There had been a reduced volume of recorded crime by 1%. Salisbury continued to have one of the lowest crime rates in the country.

Crime statistics were available in the pack.

Questions:

The Board had request a boundary map at the last meeting, was that sent out?

Answer: Yes it was emailed to all Board Members.

What was the change to the 101 system? Answer: Yes it has been taken up by the Government and it will become free next year. We have also taken up an online reporting system.

The Board gave thanks to the service provided by the Police.

Fire – Neil McConchie

Standing in for the Station Manager who is on leave.

The Board noted the written report attached to the agenda.

Community Engagement Manager – Marc Read

- Beat the street competition 20th May launched. 10k people walked, jogged, scooted. Special event in Churchill gardens 11 – 1pm Saturday for awards.
- Wiltshire Centre for Independent Living – Have Your Say – 5th Aug 10am at Salisbury Medical Practice.

Local Area Coordinator – Pip Loach

New local coordinator based in Salisbury. The role sat with Public Health with Wiltshire Council. Working closely with the CEM in Salisbury. I work with the individuals in how to become more involved and strengthen them in interacting

better in their communities. I cover the whole of the city. Have been working in the Friary and creating links there, and have been finding out about the groups that are currently running in Salisbury. There are a lot of opportunities available. I will be working with Marc on areas that people wish to develop more.

Questions:

Your post is new, could we have more of a focused update with an example of what you do? Answer: Marc had been contacted by an older gent in the community with issues about his garden, it came to light he was recently bereaved. I went out and found out that there were issues with his garden and some planning near him. I was able to signpost him and find out about what services were around to support him, such as the widowers coffee morning at St Thomas' Church.

At WC we have people called a Lead Professional, where one person acts for all the services, your role sounds similar to that.

Action: CEM to liaise with Pip to arrange a future update slot.

Air Quality Action Group – Marc Read

Marc had been working with the AQAG to complete some applications.

They were applying to the Urban Tree fund and had Highways England Applications in.

A number of the groups recommendations were taken forward as part of the recent Maltings consultation.

Clean Air Day 2020 – looking into having one of these in Salisbury.

The next meeting was scheduled for 25th September, at the Enterprise Network, Salisbury.

Questions:

Now they declared a climate emergency could you look in to the proposal of starting a car free day once a year?

Action – CEM to take that forward at the next AQAG meeting.

Could you reassure us that any future tree planting will have a schedule of watering properly in place? Answer: My colleague Scott Anderson will liaise with the green space partnership and the SCC.

In addition, watering was now the responsibility of SCC following the asset transfer. There was a schedule in place.

There is a national car free day on 22nd September 2019, that happens in London and nationally, that may be too soon for one to be arranged in Salisbury but you could plan for next year.

	<p>We had a presentation 18 months ago about an initiative of tree planting for WW1. Is there an update on that, did the trees get planted? Answer: In Laverstock there were trees planted in the Country Park. It did happen in November 2018. They are doing well.</p>
50	<p><u>A Celebration of Grant Assisted Projects</u></p> <p><u>Wiltshire Music Centre – Celebrating Age</u> This three-year project was funded by the Arts Council and Wiltshire Council, where isolated people came together to create art work. 16 events had been held so far with 481 people attending at a variety of venues around the city. Future plans included putting together a 5 year funding application for future projects.</p> <p><u>Questions:</u> The Board put in £1500 for 3 years, what was the total project cost? Answer: There was other funding from the lottery fund, the whole project cost £100k.</p> <p><u>The Secret Garden - 3D Bee Trail</u> Rebecca Twigg, Director of the Secret Garden Salisbury. We encourage people to get outside for health. The Bee Trail was partly funded by the Area Board, who awarded us £4000 of the total £15,000 project.</p> <p>There is an app with a map that details a route with locations to find the bees which appear around the city on the signs in our green spaces.</p> <p>Other local businesses supported us with funding including nationally. We won an innovation award from DEFRA and Kew Gardens for the app and the trail and encouraging people outside.</p> <p>There has been a lot of interest from other cities. This is a permanent project in the city.</p> <p>Laverstock Country Park and boardwalk would be included as two more points to visit. We have worked with lots of schools and have been running workshops in the secret garden on pollinating.</p> <p>Our future plans are to have a proper launch around the city, and push this free activity out to everyone.</p> <p><u>Salisbury Literary Festival</u> Tom Bromley – Director of Salisbury Literary Festival. We wanted a festival to celebrate the city and to inspire writers for the future. The funding from the Area Board was used quite broadly. We have had 2 festivals so far. This year we ran 43 events across 6 days, where we had around 100 authors into the city.</p>

We will run a full day of free events for children in the city and are about to launch the Salisbury storey prize, a competition for adults and children.

Our events are organised by volunteers with lots of good will, creativity and passion.

This year the festival is scheduled for 18 – 20th October.

Salisbury Post Adoption Support Group

Creative Workshops for Adopted Teenagers

Sarah Taylor runs the post adoption support group.

We wanted to do something not in education but that was more creative, so we set up a group called 'Make your Mark'. We offered creative arts in sessions where our young people and their families were all invited to come together.

The grant enabled us to reach out to hard to reach families and deliver sessions which have had a positive impact on the young people.

We have forged strong links with the local arts organisations who have since reached out and offered us opportunities for our young people.

Last year we launched a Wiltshire Wide network called WANDS.

I have become a national champion for adopters.

Questions:

Some children don't want to be treated differently for being adopted. What is the balance? Answer: It varies from one young person to another, some do not want it to be highlighted, others find it useful as enables them to see that they are not alone.

Salisbury Parkrun – Junior Parkrun

Rebecca Thomas – Director

We wanted to create something where the whole family could be involved. Our grant of £3000 paid for the registration with Park Run, and enabled us to get started.

We run a weekly 2k event for 4 – 14 year olds. We have so far had 300 runners participate, with 156 runners on average each week.

The event is fun, inclusive and the whole family can take part together.

Run by volunteers, in the community by the community. Helping to develop a life long love of activity. We also provide opportunity for volunteers to assist with setting up marshalling and time keeping.

The Bridge Youth Project – Mentoring Scheme

Alex – Director

We had £1400 towards the mentoring scheme that we run at 4 schools including St Edmunds, Sarum Academy and Wyvern.

	<p>Kate facilitates mentors who meet with young people 40 times over an academic year.</p> <p><u>Safer & Supportive Salisbury</u> Anne Trevett – Secretary We support vulnerable people out and about in Salisbury. We try and do small things that make a difference. The installation of 2 defibrillators for the city has now taken place, with training for local people available soon. There are guardians looking after them.</p> <p>The Men’s shed initiative, working in collaboration with Alabare there is now a space where men meet each week to do activities and talk. It has been a huge success.</p> <p>The SASS showcase event. We held one for dementia where we provided details of 20 services were available in the community. In May we had a session on autism in the Guildhall. The focus for 2020 will be on Carers.</p> <p>Safe Places is a simple scheme where businesses and organisations commit to providing a place of sanctuary for those people who are vulnerable. We had £480 towards the scheme. Small amounts of money can make a big difference.</p> <p><u>Home Start South Wilts – Reaching Out</u> Emma Procter On 2nd July 2018 we received £3,000. We recruit, train and support volunteers to go in and support families on a weekly basis. With the funding awarded to us we were able to support 3 families over 9 months.</p> <p>Future proofing – working closely with Marc and Board members on a project in Bishopdown and on a project in the Friary where we hope to set up a group.</p> <p><u>Chair</u> The Chair thanked all those who came to present their projects which demonstrated how much was being done with limited finance but an enormous amount of individual commitment and noted the wide and diverse range of projects the Board has supported.</p>
51	<p><u>Maltings Consultation - Update</u></p> <p>Richard Walters, Head of Major Projects gave an update on the progress of the Maltings consultation.</p> <p>The public consultation ran for over 6 weeks. An application was submitted and considered by Strategic Planning on 19th June. The Committee unanimously</p>

	<p>supported the Masterplan and that has now been endorsed as a document for material consideration in the future planning considerations. This was an important milestone in the economic development of this site.</p> <p>We have our key strategic partners like the Environment Agency working on issues like flooding.</p> <p><u>Questions</u></p> <p>Disappointed that the Strategic Planning committee did not approve the application for the library. What is your next step? <u>Answer:</u> The proposal came forward from the developer and the Council was engaging with them. The reasons for refusal were around design, they were working on bringing forward new proposals for the site. It was a matter for the developers.</p> <p>The Maltings project was an Area Board project set up six to eight years ago, can I ask that our chair continues to be involved.</p> <p>I was not disappointed that application was turned down, it would be so helpful if we could start to get something sorted out for the Young Gallery and the site for the library. <u>Answer:</u> Cllr Church - With regards to the library and gallery we are going through a consultation process on the cultural strategy for Salisbury. At the end of that process that would hopefully spread some light as to where they may be.</p> <p>It was a rushed application and was turned down for valid planning reasons. The Conservation Officer objected quite strongly. They need to get it right before it comes back again. With regards to the £6.1m from the Local Enterprise Partnership (LEP), why is the Council not lobbying the MP to secure the money? <u>Answer:</u> The application was developer led and the Council did not have any input into that. It was important for the LEP funding to remain in Salisbury, the Council was talking directly with the LEP.</p>
52	<p><u>High Street Fund & Central Area Framework Update</u></p> <p><u>Victoria Moloney Head of South Wiltshire Economic Recovery Team gave an update on the High Street Fund.</u></p> <p>We would hear back on whether our bid was successful in the summer 2019.</p> <p>At the last meeting with SCC, Cllr Dean advised that we should look at all areas of funding, including the Heritage Asset Bid. We have been speaking to some heritage focused community groups.</p> <p><u>Questions:</u> When do we expect to have a definitive answer? <u>Answer:</u> Summer 2019.</p> <p>This is a real opportunity to get one area correct, in sharing what the public</p>

	<p>want for the city. I am certain we will get the £25 million high street funding, but we need to involve the public.</p> <p><u>Tom Dobrashian, Programme Director for Economic Recovery gave an update on the Central Area Framework</u></p> <p>The consultation was initiated over a week ago and is available online.</p> <p>There are information boards at the back of the hall for people to view. We are trying to get a cross section of views form visitors, residents and businesses across Salisbury</p> <p>Tibbalds presented for us at the Last Area Board. Where we proposed a number of objectives.</p> <p>We did not go into the detail of the Framework, we have raised some concepts, like character areas. We suggest that the Character of Salisbury can be improved and linkages can be strengthened.</p> <p>People friendly streets, pedestrianisation and introducing changes, with treatments to pavements to enhance beauty of the place.</p> <p>Consultation is running for you to have your say.</p> <p><u>Questions:</u></p> <p>Where else are the Information boards on display? <u>Answer:</u> The boards will be in the library until 8th August. Also on display at 5 Rivers.</p> <p>Can we remind you to have a close relationship with the Community Safety Group.</p>
53	<p><u>Area Board Funding</u></p> <p>The Board considered 4 applications for funding from the Community Area Grant Scheme, as detailed in the report attached to the agenda.</p> <p><u>God Unlimited</u></p> <p>This was based just outside Shrewton, and provides outdoor opportunities for adults and young people, with job opportunities for around 20 people and many volunteers.</p> <p>We work to assist young people who are really struggling in schools. We work with them to better manage the transition in their lives.</p> <p>We have applied for £5000 from three Boards, Salisbury, Amesbury and Southern Wiltshire, as our clients come from across those community areas.</p>

There are three elements to the project, roofing, a toilet block and a low rope course in our woodland.

Questions:

As you are based in Shrewton, how many people come from Salisbury? Answer:
27

The benefits are worthy.

Decision

God Unlimited was awarded £5000 towards an outside therapy expansion of services for 2020.

Reason – The application met the Community Area Grants Criteria 2019/20.

Salisbury Live

This was an annual music festival in and around Salisbury each year. This year we will have the launch in Market Square and close in Riverbourne Community Farm. These will be two large free events.

The Salisbury Bash is something that the public asked for. In conjunction with SCC we have some brilliant headline bands.

Starting tomorrow 5th July, leading up to this event there would be free music in the Market Square every Friday.

Decision

Salisbury Live was awarded £1625 towards the Summer Bas project.

Reason – The application met the Community Area Grants Criteria 2019/20.

Decision

The application from the Buzz Action Foundation was deferred until a representative could attend.

Castle Hill Country Park

The new Ranger of the Country park was providing 3 days a week at the park and her other 2 days on the Farm developing their water meadows.

The parish council owned the park. The endowment was given to the parish to manage the Park. I am tasked to gain additional funding to bolster up our funds to carry out additional works. I have asked for funding for some power tools and a vehicle to access the park.

Questions:

Kit like this would need to be securely stored.

	<p>Cllr Dean - This is a good cause and a real community benefit, however L&F made it clear that they wanted to maintain their independence and run the country park. We accepted that position at the time, that they would not approach this Board for funding anymore because of the boundary. I propose 50% and suggest the applicant approach the southern AB and L&F parish council for the rest. <u>Answer:</u> We did originally apply to Southern Wilts AB, we were advised that we should come to Salisbury for the full amount.</p> <p>Cllr Brown - It does fall within our area. It falls within my division. I think the aspirations for this park have been enormous and will be a benefit. I support this funding bid.</p> <p>Cllr Rogers - We have moved on from the boundary division issues, that is irrelevant. This is a real benefit to the community, and that needs to be considered.</p> <p>The Board voted on the motion to fund 50%. That motion was not carried.</p> <p>The Board then voted on the motion to fund the whole amount.</p> <p><u>Decision</u> Castle Hill Country Park was awarded £4752.50 towards Equipment. <u>Reason</u> – The application met the Community Area Grants Criteria 2019/20.</p> <p><u>Youth</u> The Board considered 2 applications to the Youth Project Funding Scheme for 2019/20, as detailed in the report attached to the agenda.</p> <p>Cllr Rogers, Lead Councillor for Youth. The LYN considered and supported both of the applications.</p> <p><u>Decision</u> Friary Youth Club was awarded £1360 towards Youth Club outings.</p> <p><u>Decision</u> Community Engagement Manager Initiative was awarded £2000 towards the Club 1 Plus.</p>
54	<p><u>Community Area Transport Group (CATG)</u></p> <p>The Chair noted the minutes of the last meeting held on 11th June and considered the recommendations for funding as detailed in the report attached</p>

	<p>to the agenda.</p> <p><u>Decision</u> The Salisbury Area Board agreed to award CATG funding to the schemes as below:</p> <ul style="list-style-type: none"> • 6781 & 6852 – Bus shelter installation at Devizes Road & Heath Road junction - £674 • 7000 - Motorcycle parking barriers re-distribution - £2580 • 7134 – Cycle Route signage - £1600 • 7219 – Bollard installation to alleviate further damage caused by large vehicles to Chequers House - £450
55	<p><u>Representatives to Outside Bodies and Working Groups of the Board</u></p> <p>The Board considered the report attached to the agenda.</p> <p>It was noted that appendix A, was out of date as there had been some movement since that list of representatives had been agreed. The Board members would consider the allocation of representatives at its next Councillor briefing and ratify the decision for Appendix A at the next Area Board meeting.</p> <p>The nominated Cllrs to the Working Groups as listed in Appendix B would be as follows:</p> <ul style="list-style-type: none"> • Community Area Transport Group: Councillor Sven Hocking • LYN Management Group: Councillor Derek Brown • Health and Wellbeing Group: Councillor Derek Brown • Child Health & Wellbeing Group: Cllr Mary Douglas • Crime & Safety Group: Cllr Atiqul Hoque <p>Decision The Area Board agreed to:</p> <p>a. Appoint Councillor representatives to Outside Bodies at a Councillor Briefing outside of the Area Board Meeting and feedback at the next meeting;</p> <p>b. Agree to reconstitute and appoint to the Working Group(s) as set out in above;</p> <p>c. Note the Terms of Reference for the Working Group(s), as set out in Appendix C.</p>

	d. Appoint Irene Kholer as the Older Person's Champion for the Area Board, in accordance with Appendix D.
56	<u>Close</u> The Chairman thanked everyone for attending and noted that the next meeting of the Salisbury Area Board would be held on Thursday 26 th September 2019, At City Hall, Salisbury.



Frequently Asked Questions: Policing Precept Consultation 2019

What is the precept?

The policing precept is a contribution from local residents towards local policing. This is collected with your council tax payment and goes directly to the Police and Crime Commissioner (PCC) to allocate to the police force.

What are you consulting us on?

I want to know whether you would be willing to pay an extra sum per month to enable us to improve policing services in Wiltshire and recruit more police officers.

At the moment this is what you pay:

Council tax bands	Monthly	Annually
Band A	£10.13	£121.51
Band B	£11.81	£141.77
Band C	£13.50	£162.02
Band D	£15.19	£182.27
Band E	£18.56	£222.77
Band F	£21.94	£263.28
Band G	£25.31	£303.78
Band H	£30.38	£364.54

The proposed increase is outlined here:

Council tax bands	Monthly	Annually
Band A	£1.33	£16
Band B	£1.55	£18.66
Band C	£1.78	£21.33
Band D	£2	£24
Band E	£2.45	£29.34
Band F	£2.89	£34.67
Band G	£3.33	£40
Band H	£4	£48

How is this money spent?

This money is spent on policing in Wiltshire, 98% of the PCC's budget is allocated to the Chief Constable and the remaining 2% is spent by the PCC's office on commissioning services which includes supporting victims of crime, crime prevention and restorative justice.

But don't you receive funding from the Government?

Around two thirds of Wiltshire Police funding comes from the Government, the rest is collected locally with your council tax.

Why are you asking us for more money?

I've listened when the public have said they want to see more police, and I want to enhance community policing, prevent crime from happening in the first place and enable Wiltshire to tackle cyber-crime effectively.

It's always a difficult decision to increase the precept, but it is necessary if we want more police officers. I continue to lobby the Government to provide fairer funding for Wiltshire Police, just because we live in a rural county it doesn't mean that we aren't seeing the same threats and demand as more urban forces.

What will change if I agree?

If residents and businesses back my proposal additional funding will be allocated to:

- Recruiting 41 extra police officers and two dedicated cyber-crime staff, with a particular emphasis on response and community policing.
- Two cyber teams (CIET and DIIU) tackling child sexual exploitation and online fraud
- Targeting those at risk of committing crime with diversionary tactics

Where can I have my say?

To give your feedback please visit <https://www.wiltshire-pcc.gov.uk> and click on the link on the homepage, you can also contact the PCC's office directly by emailing pcc@wiltshire.pcc.pnn.gov.uk or calling 01380 734 022.

Wish lists for health and care services in BaNES, Swindon and Wiltshire revealed

Hundreds of people in Bath & North East Somerset, Swindon and Wiltshire have shared their views on how to improve NHS health services where they live.

Increasing the use of technology for booking appointments and data sharing between health services; helping people lead a healthier lifestyle to prevent illness; shortening waiting times for access to GP appointments; and for health professionals to have a better understanding of long-term health conditions, such as autism, were some of the themes that emerged from people in the region.

Their views were shared as part of the Healthwatch #WhatWouldYouDo? campaign and the findings are revealed in a new report.

Nearly 700 residents, patients and their families took part in 'What Would You do?' activities, which launched in March to encourage people in the region to share their views about how extra money from the Government should be spent on local NHS services.

The public were asked to give their views about how local services could improve, and to share ideas about how the NHS can help people live healthier lives and take more control of their care.

Stacey Plumb, Manager at Healthwatch Wiltshire, said: "The Government is investing an additional £20 billion a year until 2023 in the NHS as part of the NHS Long Term Plan. We were asked to help find out what local people thought was the best way for the NHS in Bath & North East Somerset, Swindon and Wiltshire to invest in the right services as part of this plan.



"It was wonderful to listen to so many people keen to make a difference in our local NHS. These views are all in the report and we will now monitor how the local NHS responds."

Dr Ian Orpen, Chair of the BaNES, Swindon and Wiltshire Clinical Board, said: "It's clear that local people have strong views about how health and care services should be organised in the future. We will listen to them and make sure we address their concerns as we draw up plans for how we organise services over the coming years."

The report is being shared with the local NHS and can be viewed on our website.

This page is intentionally left blank

September 2019

The right healthcare, for you, with you, near you

NHS Wiltshire Clinical Commissioning Group (CCG) is responsible for commissioning a broad range of healthcare for the population of Wiltshire. We are led by experienced local GPs drawn from across the county, who provide clear clinical leadership to the big decisions affecting the future of healthcare provision in Wiltshire, carefully tailored to meet the differing needs of people locally.

Our vision is to ensure the provision of a health service which is high quality, effective, clinically-led and local. We are committed to delivering healthcare that meets the needs of Wiltshire people, to consult and engage with our population to enable them to be involved in decisions made about health services and to deliver those services to people in their own homes or as close to home as possible.

News

GPs to vote on proposal to merge three CCGs

The Governing Bodies of Bath and North East Somerset, Swindon and Wiltshire CCGs have approved the decision to pursue the creation of a single CCG with one Governing Body and one set of statutory duties by 1 April 2020.

Throughout July and August, we have been meeting and discussing the proposal to merge with our stakeholders and gathering their views on our plans. You can add your comments by emailing bsw.mergerfeedback@nhs.net before 3 September 2019.

All feedback will be considered by the three Governing Bodies and our collective GP membership will be invited to vote on a final decision to apply for merger. The Local Medical Committee (LMC) will conduct the voting process which will run from 4 - 17 September 2019.

If we receive membership support, we will then formally apply to NHS England to make a final decision regarding the future of BaNES, Swindon and Wiltshire CCGs. A detailed application to merge needs to be submitted to NHS England by 30 September 2019 to have the full merger in place by April 2020.

We will continue to provide you with updates on the process in the coming months.

Our Health Our Future – engagement to support BSW five year plan

We wrapped up the survey and engagement for Our Health Our Future at the end of July - thanks to everyone who took the time to share their views.

Over six weeks we received more than 1,450 survey response from across Bath and North East Somerset, Swindon and Wiltshire (BSW) and talked with hundreds more at markets, on the streets and in groups at meetings.



Our Health Our Future aimed to find out what was important to people for the future of local health and care services. The feedback we received will help us build our five year plan for services in the BSW region.

Responses are currently being analysed and we will share the key themes and ideas in due course.

To find out more about Our Health Our Future you can visit the website www.ourhealthourfuture.org.

Governing Body meeting

Our next Governing Body meeting is on Tuesday 24 September 2019 at 10am at Southgate House, Pans Lane, Devizes SN10 5EQ.

A BaNES, Swindon and Wiltshire (BSW) Governing Body in Common meeting will be held on Wednesday 25 September 2019 at 6pm in the Kennet Room at the Hilton Hotel, Lydiards Field, Great Western Way, Swindon, SN5 8UZ.

You can read the papers from previous meetings on our website www.wiltshireccg.nhs.uk/governance/governing-body-meetings-in-public

News archive

Read more news from Wiltshire CCG in our [news archive](http://www.wiltshireccg.nhs.uk/news/news-archive) – www.wiltshireccg.nhs.uk/news/news-archive.

Keep up to date with news and information from Wiltshire CCG on social media.



NHS Wiltshire CCG



@NHSWiltshireCCG

Chairman's Announcements

Subject:	How Dementia Friendly is Wiltshire?
Web contact:	https://www.healthwatchwiltshire.co.uk/report/2019-07-24/how-dementia-friendly-wiltshire

Healthwatch Wiltshire's latest report is now available online. It gathered the views and experiences of more than 100 people in the county who are affected by dementia.

“How Dementia Friendly is Wiltshire?” focuses on two elements - how local dementia friendly initiatives are working to make their area more dementia friendly, and how much those living with dementia feel they benefit from them.

Healthwatch Wiltshire visited 15 community groups across Wiltshire and invited people to take part in a survey or a 1:1 interview to gather their feedback.

The report details what people living with dementia and their carers value most about dementia friendly initiatives and can be accessed via the link above.

This page is intentionally left blank

Wiltshire Council Information Item

Subject:	Representation on Special School Provision in North Wiltshire
Web contact:	http://consult.wiltshire.gov.uk/portal/education/

Wiltshire Council would like to draw your attention to its proposal for special schools in north Wiltshire.

There will be a statutory notice published at 9am on Monday 2nd September 2019 regarding the closure of:

- St Nicholas School, (Special) Malmesbury Road, Chippenham, SN15 1QF
- Rowford School, (Special) St Edith's Marsh, Rowde, SN10 2GG
- Larkrise School, (Special) Ashton Street, Trowbridge, BA14 7EB

and the related opening of a new amalgamated special school across the three existing sites.

It is proposed that:

- A new maintained school is established with a single leadership team for the existing St Nicholas, Rowdeford and Larkrise schools as soon as possible, and no later than 1 September 2021.
- The closure of St Nicholas, Rowdeford and Larkrise schools, as related proposal, occurs no later than the 31 August 2021.
- St Nicholas and Larkrise stay in use on their current sites until the new provision is ready, and it is appropriate for children to transition to the new site at Rowdeford.
- The Council will consult on the appropriate number of sites when most of the new places are available.

Wiltshire Council will open the consultation outlined via the link above.

Responses to the proposal (made via an online survey found at the above-mentioned consultation portal) must be received by the Council by 9am on Monday 30 September 2019.

If you or any of your residents have any questions about this, or would like any further information please email SpecialSchools@wiltshire.gov.uk or write to Special Schools Consultation, Commissioning Team, Wiltshire Council, Bythesea Road, Trowbridge, BA14 8JN.

This page is intentionally left blank

Wiltshire Council Information Item

Subject:	Recycling Week 2019
Web contact:	https://www.recyclenow.com/recycling-knowledge/recycle-week-campaign

Now in its 17th year, Recycle Now's Recycle Week campaign is a celebration of recycling.

The aim of the week is to encourage everyone to recycle more, by helping to understand the benefits of recycling items from all around the home and by offering tips and suggestions to make it easier to recycle!

Recycle Week 2019 will be full of action asking people to rinse, crush, squash, sort and separate. In the bathroom, the kitchen, the office and the great outdoors. Getting them to do something powerful and radical that will really make a difference.

This year's theme: Recycling. It's in our own hands

In 2018 Britain woke up to recycling.

2019 is the year we're taking action.

The theme will be 'Recycling. It's in our own hands' and the campaign will run from 23rd to 29th September.

Wiltshire Council will be issuing a series of social media posts via its Facebook and Twitter accounts, aimed at reminding residents of the wide range of materials that they can recycle through the council's kerbside collection schemes, household recycling centres, as well as making better use of charity re-use shops, and methods to help reducing our reliance on single-use plastics and other packaging.

For residents:

Wiltshire Council's website contains lots of useful information to support its residents in recycling as much of the waste they generate as possible:

<http://www.wiltshire.gov.uk/recycling>

<http://www.wiltshire.gov.uk/what-happens-to-recycling>

<http://www.wiltshire.gov.uk/household-recycling-centres>

Wiltshire Council Information Item

Recycle Now's website also has a range of valuable resources and some can be accessed via the following links:

For businesses:

<https://www.recyclenow.com/recycling-knowledge/getting-started/recycling-at-work>

For schools:

<https://www.recyclenow.com/recycling-knowledge/getting-started/recycling-at-school>

WILTSHIRE POLICE

CPT Area Briefing

Wiltshire South Community Policing Team

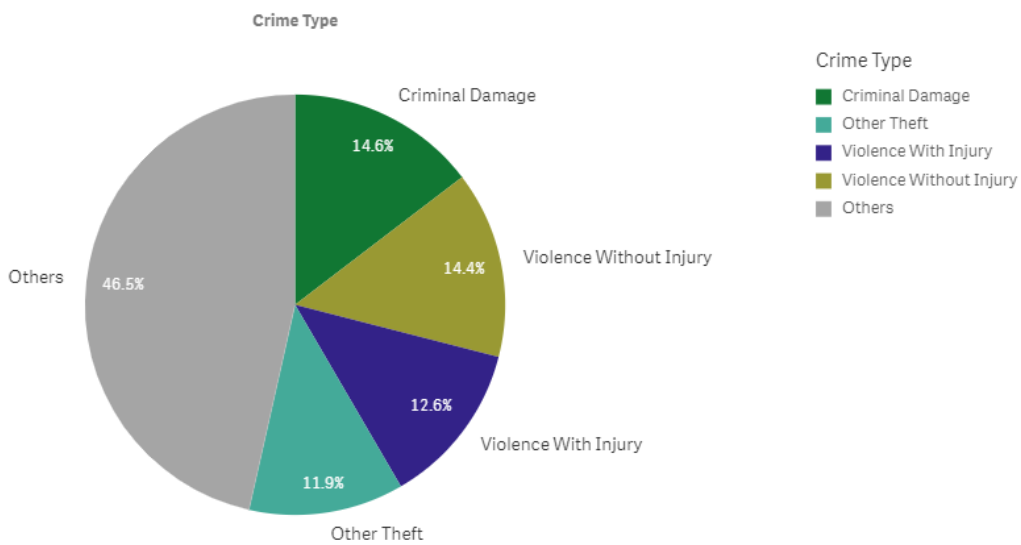


Proud to serve and protect our communities

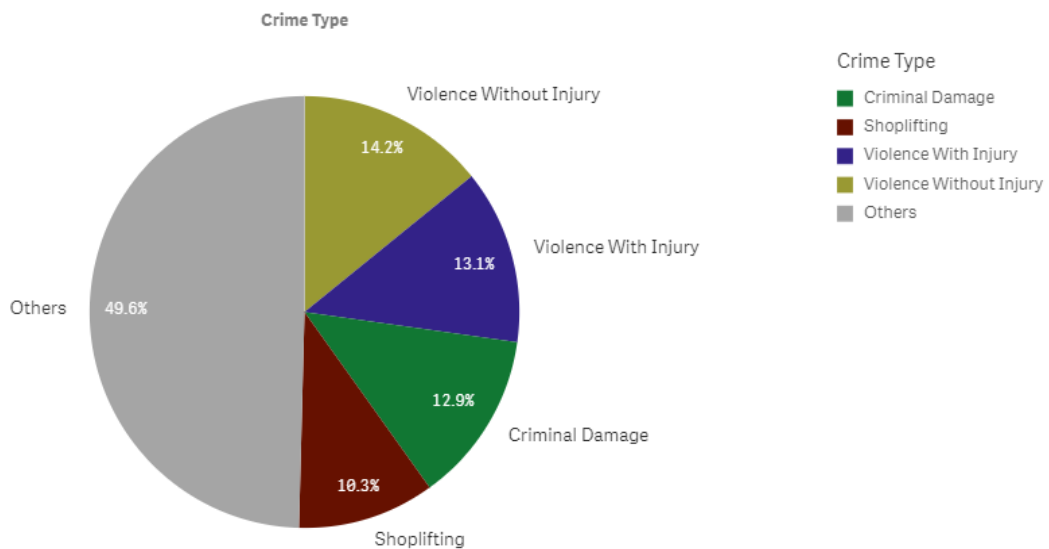
August 2019

PERFORMANCE

Your Area - Five Highest Crime Groups (Previous 12 months)



Force Area - Five Highest Crime Groups (Previous 12 months)



Wiltshire South and South East CPTs - crime and incident demand for the 12 months to July 2019

WILTSHIRE POLICE

CPT Area Briefing

Wiltshire South Community Policing Team



Proud to serve and protect our communities

August 2019

Force-wide

- Wiltshire Police has reduced the volume of recorded crime by 1% in the 12 months to July 19 and continues to have one of the lowest crime rates in the country.
- Our service delivery remains consistently good.
- In July, we received 9,653 999 calls which we answered within 4 seconds on average and 14,474 101 calls which we answered within 1 minutes 44 seconds on average.
- In July, we also attended 1,862 emergency incidents within 10 minutes and 49 seconds on average.
- Wiltshire Police has seen a 26% reduction in vehicle crime and 20 per cent in burglary in the 12 months to June 2019. These are the most improved trends in the country.
- The Crime Survey of England & Wales recently ranked Wiltshire as one of the top forces nationally for public confidence. It covers the 12 months to December 2018 The publication can be found here: WWW.CRIMESURVEY.CO.UK

For more information on Wiltshire Police's performance please visit:

PCC's Website - <https://www.wiltshire-pcc.gov.uk/article/1847/Performance>

HMICFRS Website - <https://www.justiceinspectrates.gov.uk/hmicfrs/police-forces/wiltshire/>

Police.uk - <https://www.police.uk/wiltshire>

WILTSHIRE POLICE

CPT Area Briefing

Wiltshire South Community Policing Team

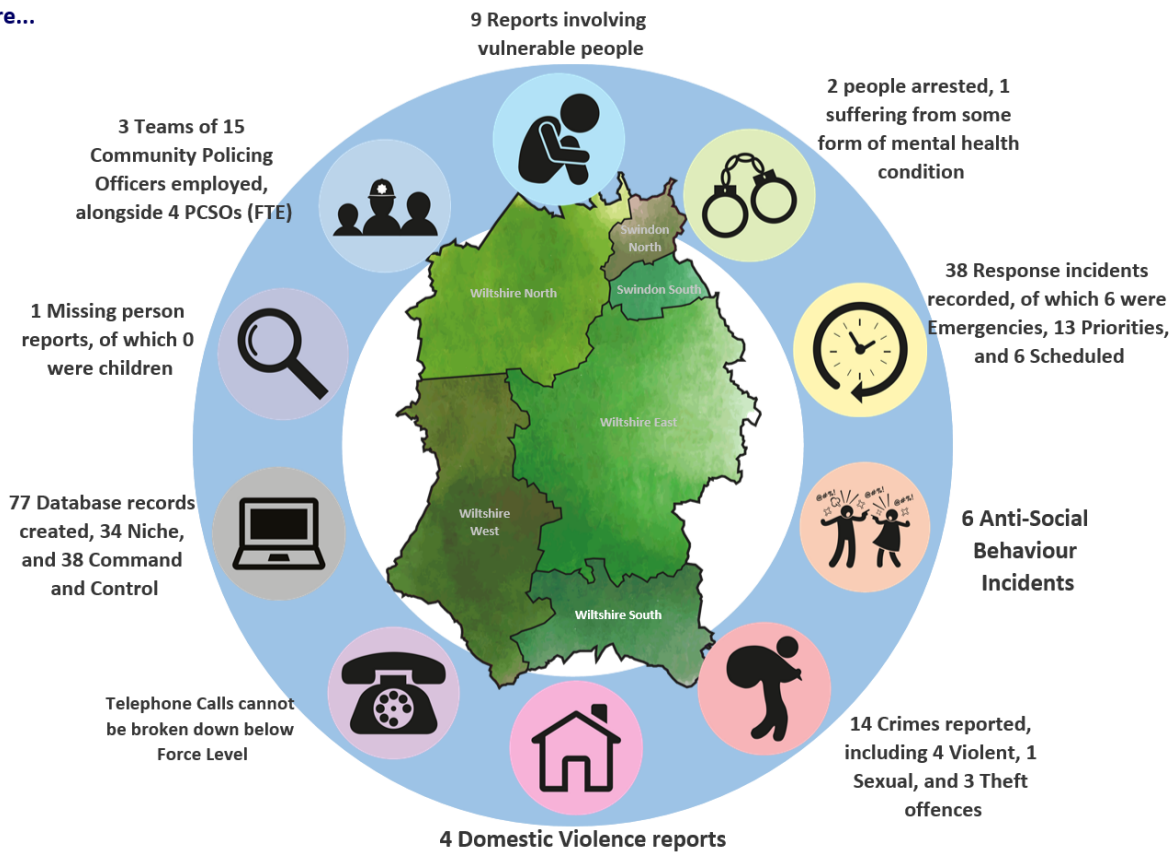


Proud to serve and protect our communities

August 2019

Area specific

On an average day in Wiltshire South there were...



Wiltshire South / South East CPT Demand Overview – 12 months to July 2019

WILTSHIRE POLICE

CPT Area Briefing

Wiltshire South Community Policing Team



Proud to serve and protect our communities

August 2019

HIGH LEVEL CPT UPDATES:

Welcome to the all-new Area Board report, which builds on the change of direction implemented locally last year in provided a much more holistic view of Wiltshire Police as a whole, including Swindon.

Youth ASB - This is always a challenging period for police; not least due to the demands of further reduced policing numbers due to colleagues taking well-earned summer holidays, but, as we move through the summer period, unsurprisingly we have seen an increase in ASB particularly from a minority youth element. Once again, their activities take up a disproportionate amount of our time and measures such as Sect 35 dispersal orders have had to be issued to a few individuals causing the most problems.

Some youths have been arrested and subsequently charged with offences including Assault, Dangerous Cycling and Public Order type offences, all of which are wholly avoidable with a modicum of common sense and the will to treat each other with respect.

We will continue to deal with such offences robustly as the holidays continue and we would like to thank the public for their overwhelming social media support for the actions thus far taken.

Cycle Theft - One area of particular note is the high number of cycle thefts currently being experienced in the city centre. This year has seen a sharp increase of thefts of cycles or cycle parts and some of these cycles have been locked at the time of the theft.

As we work through the numbers and available evidence, our message has to be a clear one – a locked cycle is always harder to steal and you should always get the best lock that you can afford. Many people spend £100's or even £1000's on a cycle, only to buy a cheap lock. Also, wherever possible when at home, lock your bikes within your shed as well as locking the shed as an excellent deterrent.

Locally, we are also recommending spending a few minutes taking pictures of your valuable possessions and any identifying features such as serial numbers and marks or features particular to the cycle. Also, post-coding and registration of bikes with <https://www.bikeregister.com/> will significantly aid our ability to reconcile stolen goods with their owners when recovered through arrest or warrant. There have been some great examples of this lately, following recovery and it would be great if this can continue through a few minutes well spent in the recording and storing of such simple information.

WILTSHIRE POLICE

CPT Area Briefing

Wiltshire South Community Policing Team



Proud to serve and protect our communities

August 2019

Harnham Hill - Following concerns raised by residents in Harnham over recent weeks regarding the illegal use of motorcycles on public footpaths and wooded areas, police activity in the area has increased.

Earlier this month a combined multi team operation was conducted in Harnham as a show of support to the residents that we are taking these concerns seriously. Again, the support through our social networking accounts was clear to see so thank you. The operation utilised the drone unit and roads policing, as well as an off road motorcycle



Operation Wolf - Further south, we hosted a multi force and agency operation recently in Downton, targeting rural crime trends. As we all know, criminals that enter Wiltshire often do so from far reaching areas where they live so an operation to target typical vehicles often associated with acquisitive crime is a useful manner in which to have an impact on this type of criminality.

The operation involved agencies including: Trading Standards, HM Customs, Police and the Vehicle Standards Agency and over 100 vehicles were stopped, with several being taken off the road for one reason or another.

Dangerous Drug Networks (DDN's)

We continue to work closely with our specialist teams and arrest and charge visitors to the city who come here for the sole purpose of "making money from the misery of others".

WILTSHIRE POLICE

CPT Area Briefing

Wiltshire South Community Policing Team



Proud to serve and protect our communities

August 2019

This work is an ongoing feature of our policing activity locally and positive action is always taken when there is evidence to do so.

*Any intelligence in this regard is always welcome and can be fed in to the system via speaking to an officer or member of staff, e-mail or through **Crimestoppers on 0800 555 111**.*

DS Nick Bailey – Update – Nick successfully completed the Salisbury Marathon as planned and so far has raised in excess of his £15,000 target at £15,499.

Thank you to all those that have supported his efforts.

Stories that you may have missed:

- Cannabis factory raided in the city and two arrested with seizures to the value of circa £70,000 street value of cannabis in varying forms.
- Thousands of pounds worth of counterfeit goods seized during local operation.
- Salisbury Police pursue vehicle resulting in 2 arrests and £1,000's of tools and garden machinery being recovered.
- Following a robbery of an elderly female leaving Salisbury train station, 2 persons quickly identified and arrested.

WILTSHIRE POLICE

CPT Area Briefing

Wiltshire South Community Policing Team



Proud to serve and protect our communities

August 2019

YOUR CPT – Wiltshire South



Pete Sparrow
Inspector - Sector Head



John Hutchings
Sergeant - Sector Deputy

Community Co-ordinators:



PC Matthew Holland
(Salisbury Rural)



PC Al Cromwell
(Salisbury City Centre)



PC Jack Billington
(Salisbury)

Beyond the above, the main contact within the teams are the PCSO's for your area. Recent weeks have further seen some changes in the staffing dynamic, as some of our PCSO's have moved on to other roles within the policing family.

PCSO Kim ORZA has left her role in favour of becoming a Police Officer with Gloucester Constabulary.

PCSO Laura KING has been successful in her application to become a Local Crime Investigator and has been posted to Amesbury CPT.

Both roles currently sit vacant and we are hoping for an intake of PCSO's to start shortly. In the meantime, the wider team will look to pick up the relevant work on these areas.

PC Caroline Ralph has now commenced her maternity leave and she has been formally replaced by Pc Jack Billington as the Salisbury Coordinator.

Listed below are our PCSO's

WILTSHIRE POLICE

CPT Area Briefing

Wiltshire South Community Policing Team



Proud to serve and protect our communities

August 2019

Salisbury

PCSO 3951 Val BROWN - City Centre
PCSO 8686 Gareth JAMES - City Centre
PCSO 9465 John Taylor - City Centre
PCSO 9590 Harrison EVANS - Southampton Road and the Friary
PCSO 8704 Kady GREEN - Castle Road and Bishopdown
PCSO 9001 Matthew MURRAY - Churchfields and St Pauls
PCSO 6025 Simon WARD - Harnham

South Rural

PCSO 6227 Matt SMITH - Downton Rural
PCSO 6314 Nicola CLARK - Wilton Town/ Rural
PCSO 6150 Jenny MOSS - Laverstock and Old Sarum
PCSO 8076 Simon NASH - Alderbury Rural

Community Engagement Sessions

Engagement sessions come in many forms, from community events, to formal public meetings such as Area Boards and meet and greet sessions in places like Salisbury Market.

Since our last report, we continue in our trend to meet the demand for our attendance at such events and I can only encourage you to continue asking and we will endeavour to continue to deliver.

Salisbury Market engagement will continue from next Tuesday and be monthly thereafter, but please keep an eye on Facebook for ad hock sessions as and when someone is available.

You can find out more about Wiltshire South CPT, including news stories and contacts for local officers, on our website: www.wiltshire.police.uk/WiltshireSouth

WILTSHIRE POLICE

CPT Area Briefing

Wiltshire South Community Policing Team



Proud to serve and protect our communities

August 2019

LOCAL PRIORITIES

During the summer months, we are actively engaging in activities to prevent, deter and detect crime through the use of our high visibility patrols. With this in mind, expect to see officers out on an area in numbers. This could be anywhere across the South but particularly where we are experiencing higher than usual instances of ASB or other criminality. This is not something to fear, but moreover please embrace the sight and engage with officers when out and about or even take a photo, we love to share them through social media.

PRIORITIES FOR WILTSHIRE SOUTH CPT	UPDATE
Priority 1:	
Youth ASB in the city centre	High Visibility Patrols and positive action continue to be the theme over the summer
Priority 2:	
ASB Harnham area including Harnham Hill, the chalk pits and Harnham Old Mill and the Town Path.	Foot patrols and cycle patrols will continue over the school holidays.
Priority 3:	
Cycle Thefts	Police continue to stop and challenge youths on cycles both in the manner of riding and ownership of the cycle
Priority 4:	
Rural Crime - Theft and Poaching	Rural patrols and stop checks of vehicles persons were appropriate.

WILTSHIRE POLICE

CPT Area Briefing

Wiltshire South Community Policing Team



Proud to serve and protect our communities

August 2019

HIGH LEVEL PCC UPDATES

- **Pay increase** - Police Officers are to receive a 2.5% pay increase as agreed by the Government. This is welcome news and well deserved, I only hope that the same increase is also afforded to police staff as well. However, it is expected that we will have to meet this increase from existing Wiltshire Police budgets and that no further funding will come from the Government to fund this rise, which is disappointing and I continue to lobby the Government for fairer funding in Wiltshire.
- **PCSOs** - Last month Wiltshire Police Federation, which represents police officers within the Force, wrote an open letter suggesting that the Force should 'axe PCSOs' and recruit police constables instead. Both the Chief and I strongly refuted this suggestion. We both recognise the key role that PCSOs play in community engagement, intelligence gathering and supporting the most vulnerable. The role of a PCSO is a completely different one to that of a police constable and they play a key role in our community policing teams.
- **Additional police officers** - I was pleased to hear the new Prime Minister's commitment to policing and his promise of 20,000 additional police officers in the next three years. We don't know what this will look like in terms of how many more we will get in Wiltshire but I trust that more detail will soon be forthcoming. I do have some concerns around the practicalities of recruiting so many officers in such a short period of time and it certainly won't happen overnight, with it taking around a year to recruit and train an officer before they're able to go on the beat, but his commitment to strengthening our police forces is welcome nonetheless.

HIGH LEVEL FORCE UPDATES

- **Youth crime** – A Government report into the increase in youth violence has been welcomed by the Force. Chief Constable Kier Pritchard has said that although there hasn't been a significant increase in Wiltshire, it is still a concerning issue for local people. He is calling for a multi-agency approach and focused on the need to engage with young people to help prevent them from falling into a life of crime.
- **Rural crime** – Wiltshire has bucked the national trend when it comes to rural crime, recording a 36% year-on-year drop when it comes to the amount of money this type of crime is costing people in the county. This is believed to be due to the focus our Rural Crime Team has placed on crime prevention advice, including the encouragement of CCTV, anti-poaching ditches and the installation of GPS trackers on equipment.

WILTSHIRE POLICE

CPT Area Briefing

Wiltshire South Community Policing Team



Proud to serve and protect our communities

August 2019

- **Domestic abuse** – As part of our Summer Demand campaign, we have been focusing on highlighting the important topic of domestic abuse and making sure victims know how to access the support available. There is also a focus on encouraging friends and neighbours to report concerns to the police. You can read more online: <https://www.wiltshire.police.uk/article/4820/VIDEO-What-to-do-if-you-have-concerns-your-neighbour-is-being-abused-by-a-partner>

GET INVOLVED

- You can keep up to date with the latest news in your area by signing up to our Community Messaging service – www.wiltsmessaging.co.uk
- You can follow your CPT on social media <https://www.wiltshire.police.uk/Followus>
- More information on your CPT area can be found here: www.wiltshire.police.uk and here www.wiltshire-pcc.gov.uk

FEEDBACK/ACTIONS TAKEN

This page is intentionally left blank

South East Wiltshire Station Managers Area Board Report – August and September 2019

Are you Safe & Well?



With a rural county such as Wiltshire with its rolling hills to the South of Wilton and Salisbury to the Plains north of Amesbury, it certainly does its fair share to attract more and more people to come and live in the area. However, being a rural county and with no major truck roads to service some of our towns and villages, as a Fire & Rescue Service trying to get to the more remote areas in an emergency can take us up to 15 or even 20 minutes to get to. Due to the travel times for our fire appliances we need to ensure that we can do as much as we can to ensure that our communities which we serve are a fully protected from fire as possible.

Having a fully serviced and working smoke alarm can give an occupier the early warning they need of a fire in the home and can give the valuable seconds needed to get out to a place of safety. Ask yourself, when did I last check my smoke alarm? Am I checking them at least once a week and cleaning it with the end of a Hoover regularly to prevent dust build up? Are they in the right place and do I have the correct number?



Do you have enough smoke alarms?



Fit smoke alarms on every level of your home to make sure smoke can reach them quickly in a fire.

#FireKills



Our dedicated team of Safe & Well advisors can (at request) come to your home and discuss with you and your family just what you need to do with a smoke alarm to maintain it and how to preplant for a fire within the home. But that is not all the advisors can advise on, they can also give information relating to healthier living and life style changes, they can assist in getting help from organisations such as Age Concern for our older relatives, arrange mental health support for those who require it and can also deal with Safeguarding issues which can bring together our partner agencies within the NHS, Council, Police and volunteer services.

Do you look in on your older relatives and neighbours on a regular basis and do you know if they are protected from fire with working smoke alarms, do they have a safe and serviceable heater to keep them warm in the winter and are they eating enough?

If your answer to these is NO, then all these concerns can be addressed by our Safe & Well teams BUT, we do need to be made aware of these concerns to be able to do something about them. By you contacting Dorset & Wiltshire Fire and Rescue Service through our website or using our phone messaging service and leaving some basic contact details, we can arrange a visit and give some practical advice to the occupier.

We can provide (to those who fall into our required categories) free smoke alarms and Carbon Monoxide detectors.

DO YOU KNOW A CHARLIE

More than 6.5 million people in the UK are currently caring, unpaid, for a family member or friend who is older, disabled or seriously ill. Yet many people don't identify themselves as carers, they simply see themselves as spouses, partners, parents, children or friends.

To be a CHARLIE, a person needs to meet at least one of the following criteria:

- **Care and support needs**
- **Hoarding and/or mental health issues**
- **Alcohol and medication use**
- **Reduced mobility**
- **Lives alone**
- **Inappropriate smoking**
- **Elderly – 65+**

It only takes a few minutes to email or call us but can save a lifetime of heart ache for those who suffer in silence in the summer and winter months or do not have the correct equipment to alert them to a fire in their home or to the dangers of carbon monoxide poisoning.

Contact us on:

Email: <http://www.dwfire.org.uk/safety/safe-and-well-visits/>

Phone: **0800 038 2323**

Wildfires & bonfires, Summer's not gone yet!!



Wildfires are not just confined to the warmer climates of America and Southern Europe. In the UK we have had our fair share of wildfires that have started by out of control bonfires or unattended Barbeques and the counties of Dorset and Wiltshire are no exception to these incidents.

This type of fire can get out of hand very quickly and they can generate their own winds which increases the speed, height and length of the fire making it even more difficult for fire crews to tackle, not to mention the difficulty faced by crews in trying to get water onto the fire when it is in the middle of heathland or a field.

Here are some key wildfire messages from South East England Wildfire group to use during the warmer times.

- Extinguish cigarettes properly, don't throw cigarette ends on the ground or out of car windows – take your litter home.
- Avoid open fires in the countryside. Always have them in safe designated areas.
- If you see a fire in the countryside, report it immediately to the Fire & Rescue Service. Early detection can prevent it from developing into a large wildfire incident.
- When calling the Fire and Rescue Service:
 - Get to a safe place,
 - Note the fires locations,
 - Call 999,
 - Meet the Fire and Rescue Service at the entrance.
- Don't attempt to tackle fires that can't be put out with a bucket of water – leave the area as quickly as possible.

If you must have an open fire:

- Only use barbeques in suitable and safe areas; never leave them unattended.
- Never use petrol, it can ignite quickly and soon get out of control. Only use approved lighting fuels.
- Make sure it is downwind and at least 10 metres away from any buildings or structures.
- Clear dry vegetation, such as leaves, to form a circle of earth around the fire.
- Never leave fires unattended and make sure they are fully extinguished after use.
- If you have to burn vegetation or have a bonfire, please contact Fire Control on [0306 799 0019] first.
- During this period it is advised not to undertake controlled or prescribed burning.

Hoarding



We all keep things we don't really need. Some of us have more possessions than we have storage for. But hoarding is a complex issue that goes far beyond untidiness or indecisiveness.

Hoarders can fill entire rooms from floor to ceiling, leaving themselves the minimum space in which to live. This retention of property presents a real fire risk and makes it far harder for firefighters to be able to tackle any blaze.

The Fire and Rescue Service can't solve the problem of hoarding; however, where we know there is an issue, we can work with other agencies to try and reduce the risk of fire.

Evidence from across the country shows that:

- In 90% of all residential fires, the fire itself is contained to the room where it started. However, that figure drops to 40% where there is hoarding – as this additional material fuels the fire and makes it spread more quickly.
- When there is a fire in a hoarder's home, there is a far greater risk that the individual and/or family members will find it difficult or impossible to escape.
- Common materials kept by hoarders include newspapers, magazines, books and soft furnishings – all of which are highly combustible.
- The presence of vast amounts of hoarded material creates a risk to firefighters, both in getting to the fire and through increased heat and smoke.

By offering Safe and Well visits, and installing smoke alarms, we can work with hoarders to try and make their homes more fire safe. If they want help in dealing with their hoarding compulsion, then we can refer them to other agencies for that support. However, we know that not every hoarder is ready to take that step and we want to ensure that they are as fire safe as possible, whatever the circumstances of their home.

Again we can assist in this area using our Safe & Well contact details as above.

Recruitment





As a predominately rural service, we are very reliant on those who live and work in the local community to support us by becoming an 'On Call Firefighter'. Some of our local stations often struggle to provide a fire appliance during the day due to lack of numbers at the station or who can provide us cover during working daytime hours.

Are you or do you know someone who lives or works within 5 minutes of your local fire station and would want to become an On-Call firefighter? Are you an employer that is willing to release a member of your staff to join us? Then please contact us now.

We will provide full training which includes firefighting skills, first aid, driving skills for Cat C vehicles (if required) and fire prevention and protection skills. All these skills that we provide can assist in an individual's normal workplace making that a safer environment within which to work. We provide all the uniform and fire kit and can help with travelling so there should be no expense to an individual once they manage to get in.

Payment / salary is based on the number of hours an individual can provide us and we provide holiday leave entitlement and a pension.

Our appliances and stations are based in the community and we need you as the community to staff them

Contact us on our recruitment hotline on 01722 691444 or email recruitment@dwfire.org.uk or pop into any one of our stations to find out more.

Getting the right location



What3words is a fairly new mobile phone app that has been adopted by many emergency services of England and Wales with Dorset & Wiltshire Fire and Rescue Service being one of these services. We travel through many areas on foot, in the car or by cycle. If we were to have or come across an accident not many of us would really know where we were.

When you open the app, it uses GPS to identify your location enabling you to zoom in on the map, once you have a close location you will be given 3 specific words. Provided you have the app, when asked by a member of the emergency services control room staff to give them the 3 words, they can use these to pinpoint your exact location enabling the emergency's services to find you quicker.

The app has already proved its worth locally when a parachutist got into difficulty and landed in some trees near to Great Bedwyn. By using the app, the parachutist was able to give the



Fire Service his 3 words from the app and our control room staff were quickly able to dispatch crews to a confirmed location, even some 40 foot up a tree!!

You can download the App via the Apple or the Android stores.

Response

Total Incidents attended by DWFRS for Salisbury, Wilton & Amesbury: DWFRS have responded to a number of incidents in since 1st July and the table below shows the full number of incident related vehicle movements undertaken by each station up to and including the 23rd August.

There have been no incidents of note that require reporting upon during this time.

	Incidents Salisbury	Incidents Wilton	Incidents Amesbury
Total	242	29	42

Community Safety Plan

DWFRS Community Safety Plan 2018-2022 outlines our plans for the future. It explains the diverse services we provide and how we plan to improve and deliver them over the four-year period. The plan can be found on the DWFRS website <http://www.dwfire.org.uk/community-safety-plan/>

Matty Maggs

Station Manager, South East Wiltshire. Salisbury, Wilton & Amesbury

Email: Matthew.maggs@dwfire.org.uk

Tel: 07595 799708 / 01722 691137

www.dwfire.org.uk

This page is intentionally left blank

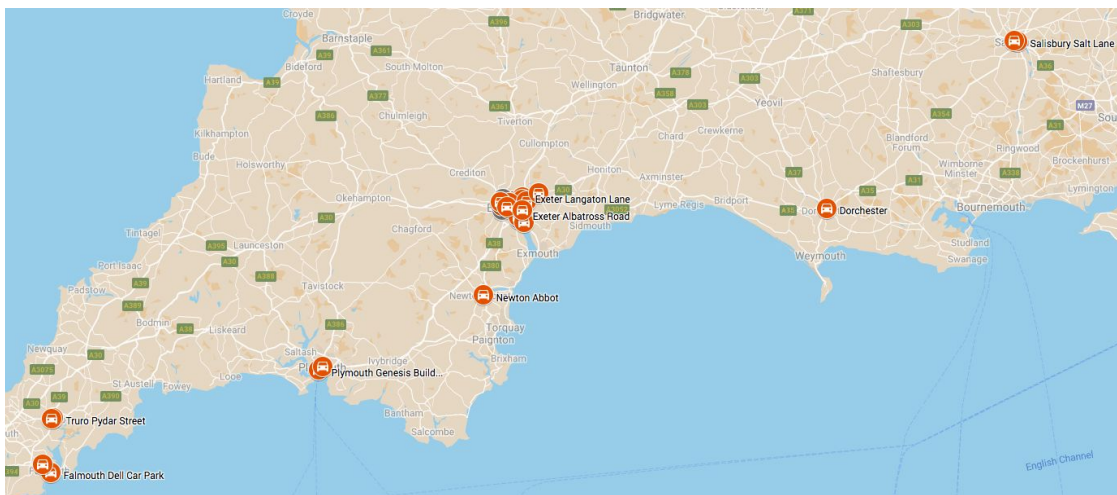


Overview

Co Cars works with local authorities, housing developers and businesses across the South West to provide smart, zero/low emission mobility-on-demand solutions for a fraction of the cost of owning or leasing. Customers can benefit from big savings on travel and parking.

Co Cars runs the South West largest on-street hire by the hour car network from Salisbury to Falmouth, both in town and at train stations and the UK's first on-street electric bike hire network. In Exeter we have 25 cars across the city and by summer 2019, 100 on-street electric bikes. Our fleet consists of on-street electric and hybrid cars and electric bikes, all bookable 24/7 using smartphone technology and available to hire from minutes to days. Hire costs are from £3.75/ hour (cars) and £1/20mins (bikes).

We are an Exeter based, not for profit, Co-operative Ltd. Our partners are Wiltshire C, Devon CC, Exeter CC, University of Exeter, Exeter College, Plymouth CC, Cornwall C, Dorset CC, SWR and GWR.



0345 345 2544 | www.co-cars.co.uk | @CoCars | www.co-bikes.co.uk | @CoBikesElectric



Co Bikes in Salisbury

Summary

A proposal to create a network of docked on-demand electric bicycles across Salisbury, starting with 10 docks & bikes (already funded) at the railway station from April 2020.

Aims

- **Reduce car ownership & dependency** - increased cycling / walking / bus use
- **App driven, easy on-demand 'zero emission' shared mobility** solution
- **Introduction to e-bikes** - "try before you buy" - evidence from Exeter shows customers purchase own e-bikes, and also re-discover the benefits of their non-electric bikes

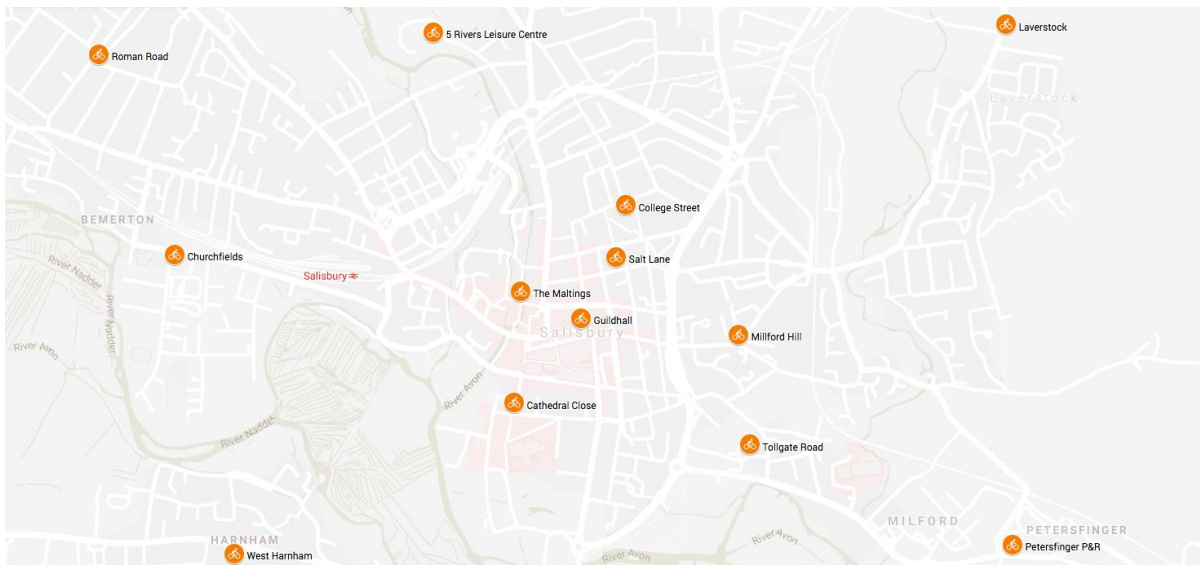
Offer

- **App driven turn-up and go electric bikes, hireable from 20 minutes to days**
- **Dedicated docking hubs**, on-street with a network of multiple sites in and around Salisbury
- **Electric bikes so making all trips fun**, easy, supported, faster, smoot and no sweat
- **E-bikes are pedelec**, as you pedal the electric power supports you. It has 3 gears, always on front & rear lights, front basket, maximum pedal assist of 15mph & tracking.
- **A-A or A-B trips i.e. bikes can be returned to other hubs**
- **Hired via App or online, 24/7** and can pre-book in advance on the day
- **Map in App**, the map shows exact availability of e-bikes at any of the locations
- **Opened by App or smartcard & pin**. Can be set to use same smartcard to unlock Co Cars
- **Single App for Co Bikes & Co Cars** in 2020
- **Bespoke pricing** and packages per company are available
- **Online and bulk joining** available & group onsite 121 training is available
- **24/7 customer service** and breakdown support
- **Zero emission** e-bikes are powered by Good Energy 100% renewable energy



Benefits

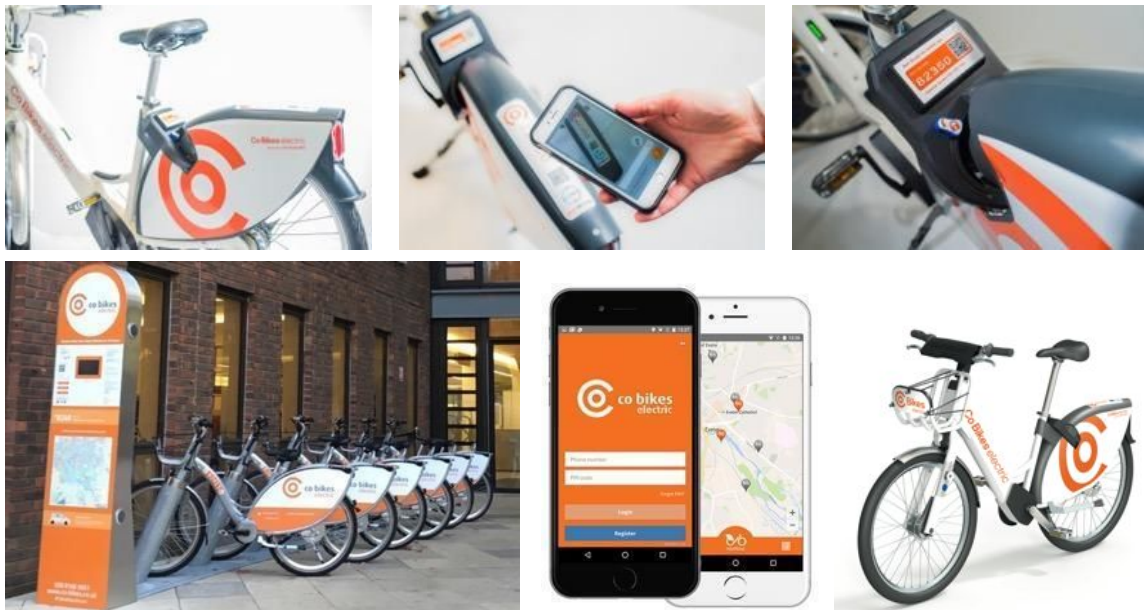
- **Onsite e-bike hub & network of hireable electric bikes saving money & time**
- **Dedicated e-bikes** – e-bike hub(s) at employment or education sites, in developments
- **Save management costs** – App booking system
- **Save on hassle & car/bike costs** – e-bike are maintained, serviced, cleaned by Co Bikes
- **Reduces the demand on car parking** – can bus/train/e-bike and if they need to visit/meeting can use a Co Bike or Co Car
- **Could setup specific dockless hubs** - bikes can only be returned within a geo-fenced area
- **Full monthly reporting** - all usage, mileage, CO2 reports, tracking and billing management
- **Available to residential and business**
- **UK & global bikeshare network** – all members would be able to use the wider nextbike bike network, in UK e.g. Milton Keynes, Bath, Glasgow, Dublin, Cardiff etc. & globally
- **Strategic partnership with SWR** – locating e-bikes at other SWR rail stations e.g. Exeter (2019), Cranbrook & Honiton (2020); **10 e-bikes at Salisbury railway station confirmed for April 2020**





Co Bikes: how it works

- Member join via App / online
- Checks availability of the e-bike on the day via App, and can pre-book the bike
- At the bike hub opens App and holds camera over bike QR code, bike unlocks with click. Pull bike out of the dock and enjoys an easy powered ride
- During the trip, the bike can be parked and locked using the integrated bike lock.
- At end of trip the bike can be returned to any of the docking / dockless hubs, by pushing the e-bike into a dock & locking the bike. It automatically ends the booking with a beep
- If the docking hub is full, the booking can be ended by using the integrated bike lock
- The member is billed for the ride, via registered card



Proposed usage fees

- E-bikes PAYG - £1 per 20 mins & £24 per day OR
- monthly membership rate - first 20 mins free

For more information

Mark Hodgson, MD
mark@co-cars.co.uk
0795 106 1353

Benji Goehl, Operations Director
benji@co-cars.co.uk
07792 621 226

www.co-cars.co.uk/developers
www.co-bikes.co.uk

Report to: Salisbury Area Board
Date of meeting: 26th September 2019
Title of report: Salisbury Area Grant Report

Purpose of the Report:

- To provide detail of the grant applications made to the Salisbury Area Board. These could include; community area grants, health and wellbeing, young persons grants and Area Board initiatives.
- To document any recommendations provided through sub groups.

Area Board current financial position

	Community Area Grants	Young People	Health and Wellbeing
Opening balance 2019/20	£73,150.67	£29,047.33	£7,799.02
Awarded to date	£7,447.09	£6860.00	£2679.00
Current Balance	£65,703.58	£25,285.00	£11,728.50
Balance if all grants are agreed	£48,076.78	£24,298.00	£8,344.50

Grant Funding application summary

Community Area Grants

Applicant	Amount requested
Applicant: Alderbury Football Club Project Title: Alderbury FC Pavilion Interiors View full application	£5000.00
Applicant: Foragers Farm Project Title: The Foyer Therapeutic Kitchen Garden View full application	£3100.00

Applicant: Buzz Action Foundation Project Title: Roadshow Equipment	£1000.00
View full application	
Applicant: Alabare Christian Care and Support Project Title: Alabare Place Defibrillator	£988.80
View full application	
Applicant: Safer & Supportive Salisbury Project Title: Lighting to main pathway to St Johns Place Community Centre	£1850.00
View full application	
Applicant: The Secret Garden Salisbury Project Title: Go Wild at Five Rivers	£5688.00
View full application	

Young People

Applicant	Amount requested
Applicant: Barford Hornets Football Club Project Title: Barford Hornets Football Club	£987.00
View full application	

Health and Wellbeing

Applicant	Amount requested
Applicant: Salisbury Repair Cafe Project Title: Salisbury Repair Cafe	£1000.00
View full application	
Applicant: Friends of Salisbury Medical Practice Project Title: Community Family Fitness Programme	£584.00
View full application	
Applicant: Salisbury Museum Project Title: Well City Consultation Workshops	£450.00

View full application	
Applicant: Safer & Supportive Salisbury Project Title: Carers Showcase View full application	£500.00
Applicant: Older People's Champion Project Title: Financial Abuse Seminar Paper application included in Area Board Agenda	£500.00
Applicant: Happy Café (Action for Happiness) Project Title: Happy Café Salisbury Paper application included in Area Board Agenda	£350.00

1. Background

Area Boards have authority to approve funding under powers delegated to them. Under the Scheme of Delegation Area Boards must adhere to the [Area Board Funding and Grants Criteria](#). This document is available on the council's website.

Three funding streams are available to the Area Board, each with an annually awarded amount. These funding streams are as follows:

- Community Area Grants (capital)
- Young People (revenue)
- Health and Wellbeing (revenue)

The Area Board will be advised of the funding available prior to their first meeting of each financial year.

2. Main Considerations

2.1. Councillors need to be satisfied that the applications meet the requirements as set out in the [Area Board Funding and Grants Criteria](#) and that the health and wellbeing and young persons funding guidelines have been adhered to.

2.2. Councillors must ensure that the distribution of funding is in accordance with the Scheme of Delegation to Area Boards.

2.3. Councillors need to consider any recommendations made by sub groups of the Area Boards.

3. Environmental & Community Implications

Grant funding will contribute to the continuance and/or improvement of cultural, social and community activity and wellbeing in the community area, the extent of which will be dependent upon the individual project.

4. Financial Implications

Councillors must ensure that the Area Board has sufficient funding available to cover the grants awarded.

5. Legal Implications

There are no specific legal implications related to this report.

6. Human Resources Implications

There are no specific human resources implications related to this report.

7. Equality and Inclusion Implications

Community Area Boards must fully consider the equality impacts of their decisions in order to meet the Council's Public Sector Equality Duty.

Community Area Grants will give local community and voluntary groups, Town and Parish Council's equal opportunity to receive funding towards community based projects and schemes where they meet the funding criteria.

8. Safeguarding Implications

The Area Board has ensured that the necessary policies and procedures are in place to safeguard children, young people and vulnerable adults.

9. Applications for consideration

Community Area Grants

Application ID	Applicant	Project Name	Requested
3306	Alderbury Football Club	Alderbury FC Pavilion Interiors	£5000.00
<p>Project Description: Alderbury FC is a Community Football Club run by volunteers coaching 300 players from 7 years upwards. In 2017 work began on new pitches and a pavilion which will enable the club to expand and provide much improved training and match-day facilities - this new project was essential as the land owner of the old site had applied for planning permission to build 50 houses on it. Additional funding is desperately needed to complete the project especially the pavilion interiors including kitchen and Clubroom. An increase in costs has arisen because of the length of time taken to finalise the lease due to the complexities involved with the impending housing development. This meant that there was a period of 2 1/2 years between funding approval and construction commencement. This application only relates to the kitchen clubroom fit out which is part of a 1 million total project.</p>			
<p>Proposal That the Area Board determines the application.</p>			

Application ID	Applicant	Project Name	Requested
3374	Foragers Farm	The Foyer Therapeutic Kitchen Garden	£3100.00
<p>Project Description: Working in partnership with The Foyer a homelessness charity for single 16-24 year olds with low to medium support needs Foragers Farm aims to work with the young people to help design build and construct a Therapeutic Kitchen Garden. The virtues of gardening to help with mental and physical well-being are well documented and we want to utilise the power of horticulture to give these young people the motivation to get involved in an exciting practical and useful project. The idea is that they will design the garden from inception then help build it plant it look after it and ultimately utilise the fresh produce grown in the garden to cook with. Foragers Farm will provide all the necessary training to show the young people how to build grow and cook and were very excited about the opportunity. We have had some initial consultations with The Foyer and the young people and every person we have spoken with is very excited about being able to get involved in an activity of this nature and were hopeful that with the backing of the Area Board we will make a positive difference to these young peoples lives...</p>			
<p>Proposal That the Area Board determines the application.</p>			

Application ID	Applicant	Project Name	Requested
3320	Buzz Action Foundation	Roadshow Equipment	£1000.00
<p>Project Description: We need to replace and renew some heavily used equipment such as a tumble track and an aerial rig. This is to meet increased demand by youth groups Our first tumble track was purchased in 2014 it has been used at least twice every week by a variety of youth groups and is still in use now. However, it is too large for many halls at 10M and is getting badly worn. We have many groups competing for a share of it. The new tumble track will be a little shorter making it accessible to almost all youth groups We expect our 2nd tumble track to last just as long.</p>			
<p>Proposal That the Area Board determines the application.</p>			

Application ID	Applicant	Project Name	Requested
3380	Alabare Christian Care and Support	Alabare Place Defibrillator	£988.80
<p>Project Description: Funding to purchase defibrillator for Alabare Place - for use within the service and the local community</p>			
<p>Proposal That the Area Board determines the application.</p>			

Application ID	Applicant	Project Name	Requested
----------------	-----------	--------------	-----------

3391	Safer & Supportive Salisbury	Lighting to main pathway to St Johns Place Community Centre	£1850.00
Project Description: There is currently unsatisfactory solar lighting only to the main path from the carpark to St John Place. Many of the Community Centre users are older and the lighting is essential to their safe use of the building especially as there is a short flight of steps on the path. SJP is in constant use in the evenings by a wide variety of users.			
Proposal That the Area Board determines the application.			
Application ID	Applicant	Project Name	Requested
3393	The Secret Garden Salisbury	Go Wild at Five Rivers	£5688.00
Project Description: A project to transform the three green spaces directly outside of fiver rivers centre into planted places for both bees birds and other wildlife but for the pleasure of people including users of the centre and potential new visitors too. The three plots will be themed as follows - Get Wild for Woodland Magic and Mindfulness at the Meadow Enchantment in the Garden. In addition to the planting I will create a seed sowing and planting day at the beginning of the project plus a series of monthly engagement and volunteering activities from April - Oct that will encourage community connection an opportunity to try volunteering and outdoor activity and to help wildlife too. This will also improve the physical entrance way to the centre. The project will have longevity and scope for many more activities beyond the initial years plan and will be a potential base for activities talks and workshops either connected to 5 rivers or otherwise as we all start to recognise social prescribing health and happiness through engaging with nature and people.			
Proposal That the Area Board determines the application.			

Young People

Application ID	Applicant	Project Name	Requested
722	Barford Hornets Football Club	Barford Hornets Football Club	£987.00
Project Description: Help towards setting up a youth football team. Help towards equipment and league fees etc			
Proposal That the Area Board determines the application.			

Health and Wellbeing

Application ID	Applicant	Project Name	Requested
3354	Salisbury Repair Cafe	Salisbury Repair Cafe	£1000.00
Project Description: Modern society has become very wasteful and although people are increasingly aware of the need to address these issues many lack the knowledge skills or finances to do so. This project aims to set up a monthly			

Salisbury community repair cafe where volunteers with repair skills join together with people who have broken or unwanted items to teach them how to repair and repurpose their own items. This project will raise awareness of the need to live sustainably and promote ways of doing so to prevent items being thrown away unnecessarily as well as providing a social meeting point for the community.

Proposal

That the Area Board determines the application.

Application ID	Applicant	Project Name	Requested
3358	Friends of Salisbury Medical Practice	Community Family Fitness Programme	£584.00

Project Description: We plan to run a 6 week course consisting of an hour and a half session each week 45mins will be led by KidsLoveFit with a different activity each week 45mins afterwards will consist of a healthy snack and a relaxed informative session focusing on nutrition health advice local services etcWe will run 2 x 6 week courses concurrently 1 at the Bemerton Heath Centre and one at Fisherton House so that it attracts maximum numbers and is accessible to the majority. The courses will be free to attend for participants and will be aimed at pre-schoolers and their families.

Proposal

That the Area Board determines the application.

Application ID	Applicant	Project Name	Requested
3381	Salisbury Museum	Well-City Consultation Workshops	£450.00

Project Description: We are currently leading a large scale application for a city-wide social prescription project. Well-City will involve five cultural organisations and benefit nearly 400 people through prescribed social cultural activity. In preparation for submitting the bid we have identified a need for consultation with possible beneficiaries of this project. We aim to offer two creative workshops at Salisbury Museum for people identified by organisations working in mental health as likely to benefit from cultural activity. These workshops will enable participants to experience the opportunities and benefits of the proposed Well-City project and give their experience-based perspective on the project plans.

Proposal

That the Area Board determines the application.

Application ID	Applicant	Project Name	Requested
3382	Safer & Supportive Salisbury	Carers Showcase	£500.00

Project Description: Building on success of previous Showcase events for Dementia and Autism Safer and Supportive Salisbury has been asked to mount a

similar event providing information and support for family Carers in April 2020

Proposal

That the Area Board determines the application.

Application ID	Applicant	Project Name	Requested
n/a	Older People's Champion	Financial Abuse Seminar	£500.00

Project Description: A half day seminar on Financial abuse including online scams are a constant threat to vulnerable people including a large % of older people who may be unaware of the danger: or very aware but prefer to ignore based on their relationship with the abuser which could be one of fear. Based on my experience of organising seminar on domestic abuse, this seminar is targeted at many and diverse organisations may have contact with people in abusive situations but unaware of their other contacts or the many and varied organisations who may not know of each other's work

Proposal

That the Area Board determines the application.

Application ID	Applicant	Project Name	Requested
n/a	Happy Café – Action for Happiness	Happy Café Salisbury	£350.00

Project Description: Currently there is a lack of services for people with mental health issues in the Salisbury area. We are looking to create a safe place for people from all walks of life to come together and support each other, as well as learning about one of the most important things a human being can have, Happiness.

The Happy Cafe Network is a project set up by Action for Happiness (Founded by His Holiness the Dalai Lama). Primarily the cafes are a place for those who seek happiness to go and share ideas and experiences. They promote science-based skills for wellbeing as well as offering coffee and a friendly ear. It was launched in 2011 and has since gone from strength to strength and now operates in 170 countries.

Proposal

That the Area Board determines the application.

No unpublished documents have been relied upon in the preparation of this report.

Report Author: Marc Read, Community Engagement Manager – marc.read@wiltshire.gov.uk

This page is intentionally left blank

ALDERBURY FC - PLAYER LOCATION AREAS - (Does not include younger players who only come to training sessions and are not yet registered in a League)

	U8	U10	U11	U12	U13	U15	U16W	U16D	U18 Boys	U18 Girls	Sat men	Sun men	Area Total
Alderbury	10	5	5	6	4	1	1	2	3	3	4	5	49
Amesbury					2		1			1	4	4	12
Broadchalke							1						1
Clarendon			1										1
Downton					2			1	2	2		1	8
Durrington					1					1	4	3	9
Farley			1						1				2
Ford						1							1
Great Wishford								1					1
Harnham		2	3	7	5			3		1		2	23
Landford						1				1			2
Laverstock			5		3		4			1		1	14
Nomansland	3												3
Odstock							1						1
Pittmore						1		2					3
Ringwood		1										1	2
Salisbury	6	5	3	4	5	15	7	6	6	4	4	6	71
South Newton											3	3	6
Wellow		3								1			4
West Dean						1							1
West Grimstead						1							1
Whiteparish								1		1			2
Wilton				1	1		1			1			4
Winterbourne				1								1	2
Winterslow						1							1

Team Total	19	16	18	19	23	22	16	16	12	17	19	27	224
-------------------	-----------	-----------	-----------	-----------	-----------	-----------	-----------	-----------	-----------	-----------	-----------	-----------	------------

This page is intentionally left blank

Health and Wellbeing projects and activities FUNDING APPLICATION

1. Applicant:

Name	Irene Kohler
Organisation	Independent Older People's Champion under the umbrella of Salisbury Area Board
Address	2 the Maples, Devizes road, Salisbury. SP2 7LL
Phone number	01722 323 812: I prefer email contact
Email address	irenek@talk21.com

2. Amount of funding required from South West and Southern Area Boards:

£0 - £1000	£500
£1001 - £5000	
Over £5000 (please note – our grants will not normally exceed £5000)	

3. Are you applying on behalf of a Parish Council?

Yes	
No	no

4. If yes, please state why this project cannot be funded from the Parish Precept?

5. Project title?

Financial Abuse Seminar

6. Project summary: (100 words maximum)

A half day seminar on Financial abuse including online scams are a constant threat to vulnerable people including a large % of older people who may be unaware of the danger: or very aware but prefer to ignore based on their relationship with the abuser which could be one of fear. Based on my experience of organising seminar on domestic abuse, this seminar is targeted at many and

diverse organisations may have contact with people in abusive situations but unaware of their other contacts or the many and varied organisations who may not know of each other's work

7. What is the Post Code of the place where your project is taking place?

SP2,
Attendees will be individuals and organisations supporting people in Salisbury

8. Please insert a tick against the themes which best describe your project: highlighted in yellow

Intergenerational

Older people support / activities

Carers support / activities

Promoting physical and mental wellbeing

Combating social isolation

Promoting cohesive / resilient communities

Arts, craft and culture

Safer communities

Heritage, history and architecture

Inclusion, diversity and community spirit

Environment, recycling and green initiatives

Sport, play and recreation

Transport

Technology and digital literacy

Other, please specify **support groups of and for people who may be isolated and/or vulnerable**

9. About your project

Please tell us about your project (a strong application will address all of the following):

(a) How does your project support local needs and priorities?

The overall aim of the programme is to reduce financial abuse and to ensure support for victims is prompt and appropriate: victims may be especially but not solely within the older population. A reduction in abuse will enhance health and wellbeing and reduce mental distress. Networking between organisations both statutory and voluntary and their "on the ground" staff will also enhance referrals between organisations and ultimately support for people in abusive situations. This event will better equip staff and volunteers to support older people in abusive situations

(b) How many older people/carers do you expect to benefit from your project?

Because people who may be vulnerable to abuse are unlikely to identify themselves by booking into and attending this event, it is targeted at statutory and voluntary organisations and services who have contact in any and many ways with people who may be vulnerable, to inform and better equip them to identify when financial abuse may be happening and how to handle the situation: this will include safeguarding issues. We expect about 15 organisations to provide information stands at the event and about 50 people to attend

Total anticipated number to benefit from this initiative: **unquantifiable**

I am expecting 50 people to be involved in this event to include people providing information stands and those solely booking in as an interested participant. I expect this will include people who facilitate support, activity or craft groups, luncheon clubs, health and social care workers, informal carers, city community staff team, support workers police, health, housing etc. Swan Advocacy, Samaritans, women's refuge, domestic violence and substance abuse organisations will be invited

It is not possible to estimate the number of people who may follow up

(c) How will you encourage volunteering and community involvement?

Many of the people involved in this event will be working in a pro-bono or voluntary capacity

(d) How will you ensure your project is accessible to everyone (for example: people living with a disability or on low incomes, or vulnerable, or socially isolated etc.)?

The event will be free

The venue used is wheelchair accessible. SASS members will be in attendance should anyone require additional assistance. If the Deaf community wish to attend, interpretation will be provided. The ethnic minority groups in Salisbury will be invited

(e) How will you work with other community partners?

I already work with community partners with members of the Health and Wellbeing Group, Safer and Supportive Salisbury Group, the Dementia Action Alliance, Charity Chairs network. This event is dependent on my engaging with a range of organisations so that they are positive about being involved

How do I work with them? I base my engagement on a common interests of equality of opportunity and that some people need support to grasp those opportunities for a range of reasons. And that we have a common aim of combatting discrimination and abuse, and enhancing the health and wellbeing of older and other vulnerable people

10. Safeguarding

Please tell us about how you will protect and safeguard vulnerable people in your project (You must address all of the following):

- Please provide evidence of your commitment to safeguarding and promoting the welfare of older/vulnerable people and their carers.
- How do you make sure staff and volunteers understand their safeguarding responsibilities?
- Who in your organisation is ultimately responsible for safeguarding?

The organisations involved will all have a safeguarding policy

11. Monitoring your project.

How will you know if your project has been successful?

General feedback on the day and longer term, Wiltshire Safeguarding team will be able to benchmark whether there have been any changes

12. If your project will continue after the Wiltshire Council funding runs out, how will you continue to fund it?

This is a one off programme with no ongoing costs. This is the second of similar seminars. The first was over three years ago on domestic violence with positive feedback

13. If this application forms part of a larger project (eg. building of new village hall), please state what this project is and approximately how much the overall project will cost

N/A

14. Finance

(a) Either - Your Organisations Finance

Your latest accounts: Month: Year:
 Total Income:
 Total Expenditure :
 Surplus/deficit :
 Free reserves currently held:
 (money not committed to other projects/operating costs)

Why can't you fund this project from your reserves?

N/A

(b) Or - We are a small community group and do not have annual accounts or it is our first year (please tick if this applies to you)

N/A

This is a project initiated organised and co-ordinated by Salisbury Older People's Champion

(c) Please detail your project finance (if your organisation reclaims VAT please exclude VAT from the project costs)

Planned project costs		Planned income	
	£		£
Room and equipment hire	50	H&WB grant	50
Travel and out of pocket expenses for facilitators and volunteers	200	H&WB grant	200
Programme editing, design and printing	100	H&WB grant	100
Organisation and co-ordination consultancy rates 5 days @ £100	£500	In kind	00
refreshments	50	H&WB grant	50
10 hours admin support @£10 per	£100		£100
Estimated volunteer hours from other organisations: 10 days	500		00

Estimated professional hours from other individuals and organisations 5 days	500		00
Total	£2,000	Total	£500

1. £50 per day for general volunteers
2. £100 per day where technical or professional advice is provided e.g. architect drawing up plans.
3. A maximum of 25% of the total project costs

15. DECLARATION

Supporting information - Please confirm that the following documents will be available to inspect upon request (You DO NOT need to send these documents to us):

Quotes: N/A

I will make available on request 1 quote for individual project costs over £500 & 2 quotes for project costs over £1000 (Individual project costs are listed in the expenditure section above) **N/A**

Project/Business Plan: N/A

For projects over £50,000: I will make available on request a **project or business plan** (including estimates) for projects where the **total project cost** (as declared in the financial section above) exceeds £50,000 (tick only when total project cost exceeds £50,000).

Accounts: N/A

I will make available on request the organisation's **latest accounts**

Constitution: N/A

I will make available on request the organisation's Constitution/Terms of Reference etc.

Policies and procedures: N/A

I will make available on request the necessary and relevant policies and procedures such as Child Protection, Safeguarding Adults, Public Liability Insurance, Access audit, Health & Safety and Environmental assessments.

Other supporting information (Tick where appropriate, for some project these will not be applicable): N/A

I will make available on request evidence of ownership of buildings/land

I will make available on request the relevant planning permission for the project.

I will make available on request any other form of licence or approval for this project has been received prior to submission of this grant application.

And finally...

I confirm that the information on this form is correct, any award received will be spent on the activities specified.

Health and Wellbeing Group Form (for small grants)

Name of Applicant: Anna Maycock-Frame

Organisation applying: Happy Cafe (Action for Happiness)

Total cost of your Project (provide a simple of breakdown):

Printing and advertising costs: £250

DBS checks: £100

Total: £350

4. How much are you applying for from the Health Wellbeing Group fund?
£350

5. What is the title of your project:
The Salisbury Happy Cafe

6. Please give a paragraph (or 2) description as to what your project is for/what its aims and objectives are:

Currently there is a lack of services for people with mental health issues in the Salisbury area. We are looking to create a safe place for people from all walks of life to come together and support each other, as well as learning about one of the most important things a human being can have, Happiness.

The Happy Cafe Network is a project set up by Action for Happiness (Founded by His Holiness the Dalai Lama). Primarily the cafes are a place for those who seek happiness to go and share ideas and experiences. They promote science-based skills for wellbeing as well as offering coffee and a friendly ear. It was launched in 2011 and has since gone from strength to strength and now operates in 170 countries.

Ten Keys to Happiness:

Giving

Relating

Exercising

Awareness

Trying out

Direction

Resilience

Emotions

Acceptance

Meaning

7. Please tell us when your project will take place:

It would be the end of August or early September 2019.

Then held once a week for 52 weeks of the year.

8. Does the project meet a local need?

Yes it does as the idea was first raised at a local Mind Support Group, during a conversation about the lack of support in the Salisbury area.

9. How does the project meet the priorities of the joint strategic Needs Assessment:

Loneliness Yes (The cafe is designed to spread happiness and would encourage people to come together and form bonds.)

Social Isolation Yes (One of the reasons we would look to hold it weekly is so it can become part of people's regular routine and easy for people to attend.)

Dementia No

Carers Yes (The cafe would welcome people from all backgrounds so carers would be very welcome.)

Avoidable admissions to hospital No

Avoidable admissions to hospital due to falls No

10. How well have older people and their carers been will be involved in the project?

The Happy Cafe Movement is all about promoting happiness and good mental health. In this way it is open to everyone and offers a safe space for those in difficulty.

11. How accessible is the project for all? (Disabled access, low incomes, vulnerable, socially isolated etc)

The host venue will be Salisbury Arts Centre (TBC) on Monday 11-1pm. The Arts Centre has a good central location and is very disability friendly.

In terms of cost we would look to ask for a £1-£2 donation. This would go towards replacing the printable items/badges as and when needed.

12. How well will the project safeguard the welfare of vulnerable people?

Safeguarding and wellbeing will be at the core of all planning for the event.

Hosts (volunteers) would be DBS checked to ensure the safety of people attending.

The founding force behind Action for happiness and the Happy Cafe project is to help people and create a safe place for everyone.

13. How will you monitor and evaluate the project?

We would look to have an attendance record (e.g. sign in sheet).

We would ask people for their views and make adjustments if needed e.g possible altering running times if a large number of people would prefer it.

Over time what people will get from group will change. Through feedback and discussion we would look to meet these needs. For example, if people would like to take part in a creative writing or meditation session we would look into hosting such an event even if it was on a once a month basis.

This page is intentionally left blank