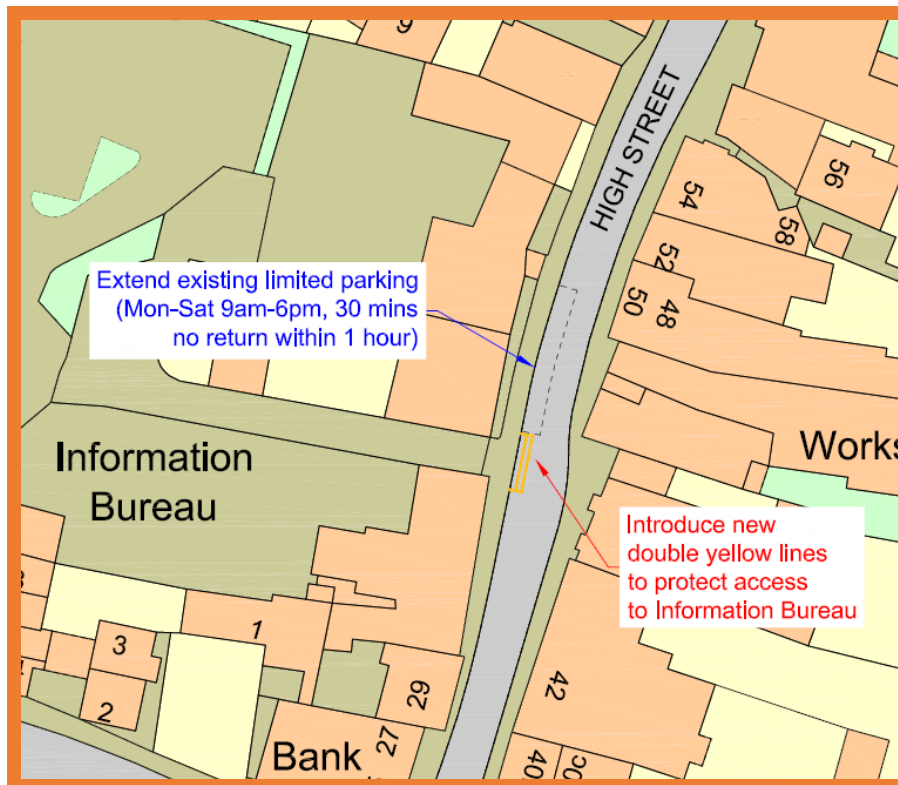


**CORSHAM: PROPOSED WAITING RESTRICTIONS**  
**RECOMMENDATIONS FOR AMENDMENTS TO PROPOSALS**

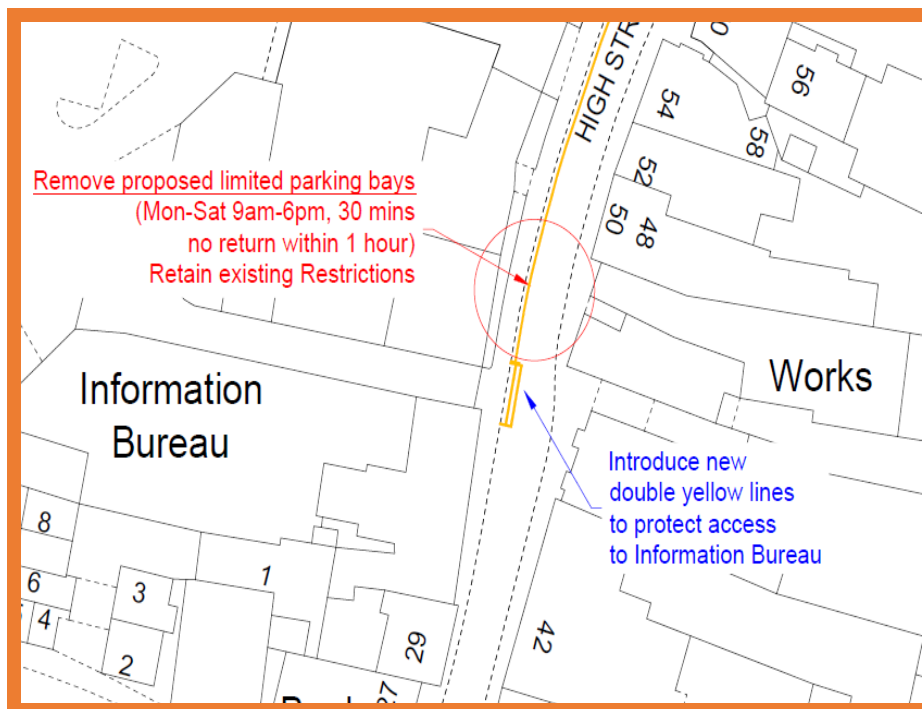
<b><u>Area</u></b>	<b><u>Decision</u></b>
Arnolds Mead	Implement the Proposals as advertised
Hastings Road	Implement the Proposals as advertised
High Street	Implement the Proposals with amendments
Kings Avenue	Implement the Proposals as advertised
Lacock Road	Implement the Proposals with amendments
Lypiatt Road	Implement the Proposals with amendments
Park Lane	Implement the Proposals as advertised
Paul Street	Implement the Proposals as advertised
Pound Pill	Implement the Proposals as advertised
Priory Street	Implement the Proposals with amendments
Station Road	Implement the Proposals as advertised
Stokes Road	Implement the Proposals as advertised
The Tynings	Not Implement the Proposals

## High Street Amendments

### Initial proposal



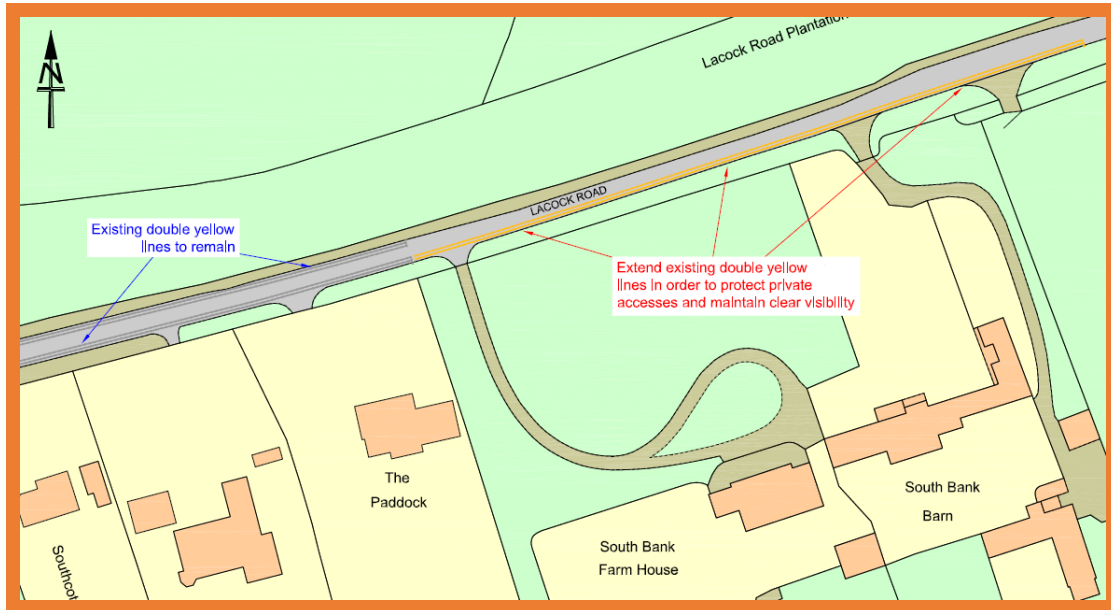
### Amended Proposal



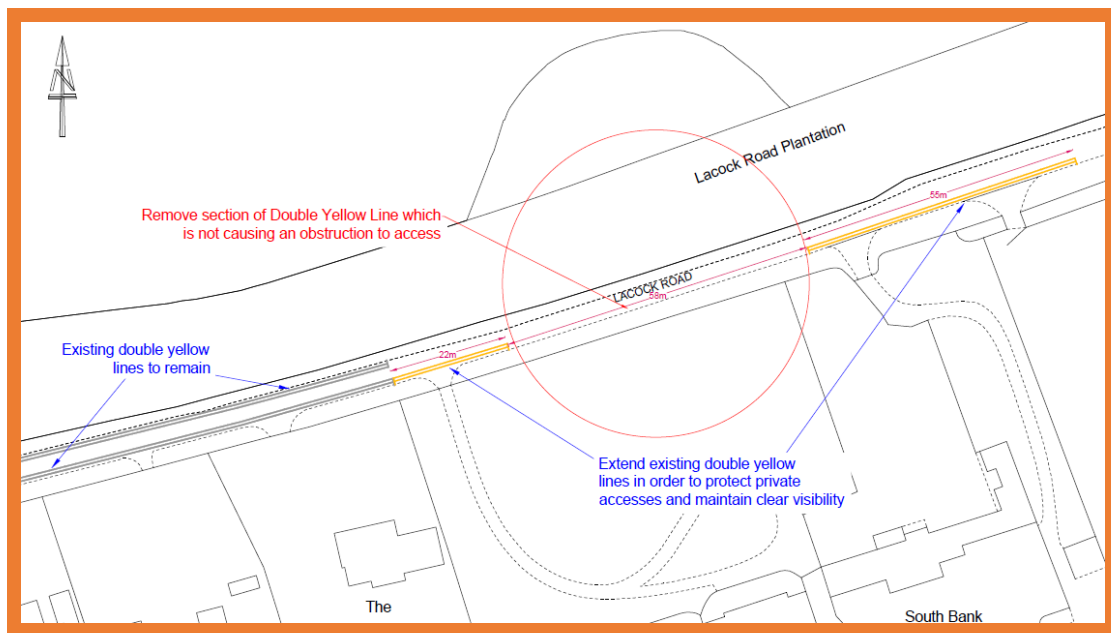
Following the consultation it is deemed appropriate to remove the section of time limited parking. The introduction of the parking bays would result in access issues for those residing nearby. The double yellow lines to cover the access to the Information Bureau are to remain.

## Lacock Road Amendments

### Initial proposal



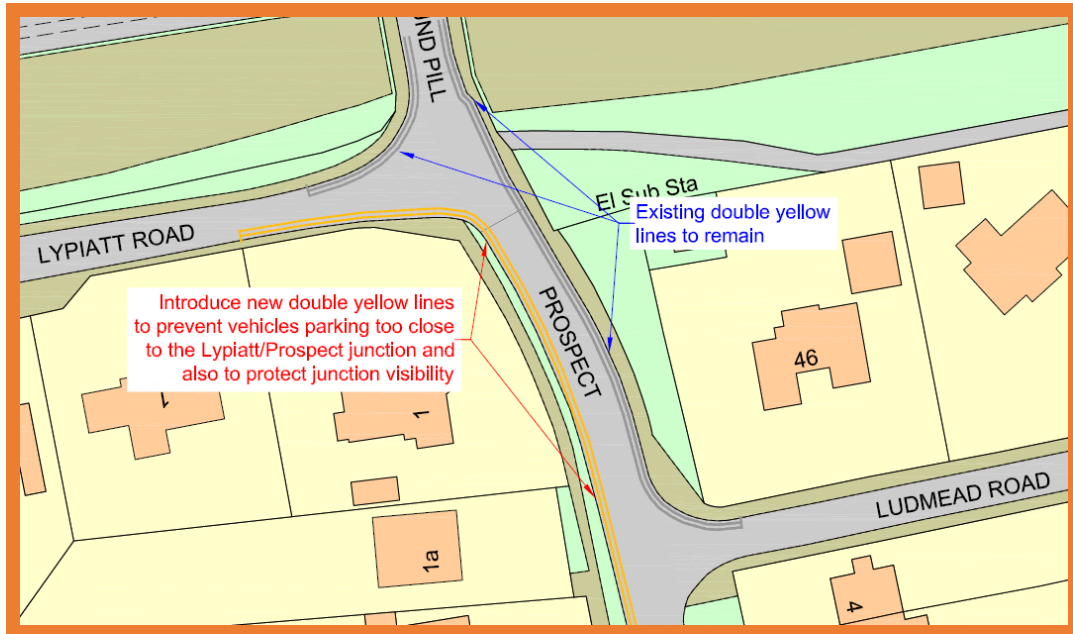
### Amended proposal



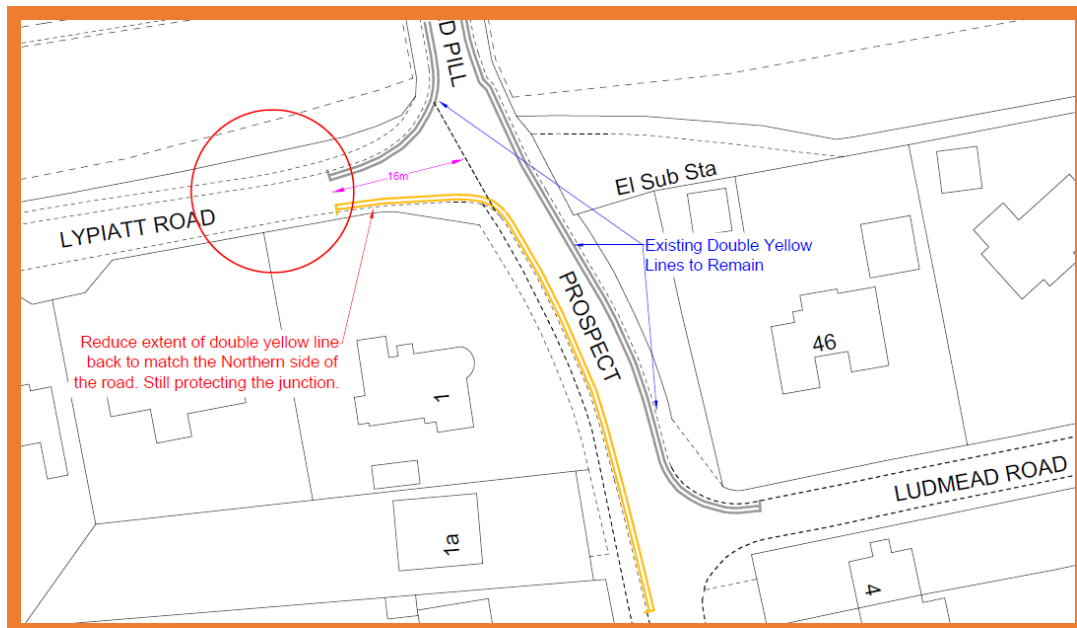
Following the consultation it is deemed appropriate to reduce the extent of double yellow lines on Lacock Road. The initial proposal was to remove obstruction to properties. This amendment will still do this but will leave a large section of unrestricted road in between.

## Lypiatt Road Amendments

### *Initial proposal*



### *Amended proposal*



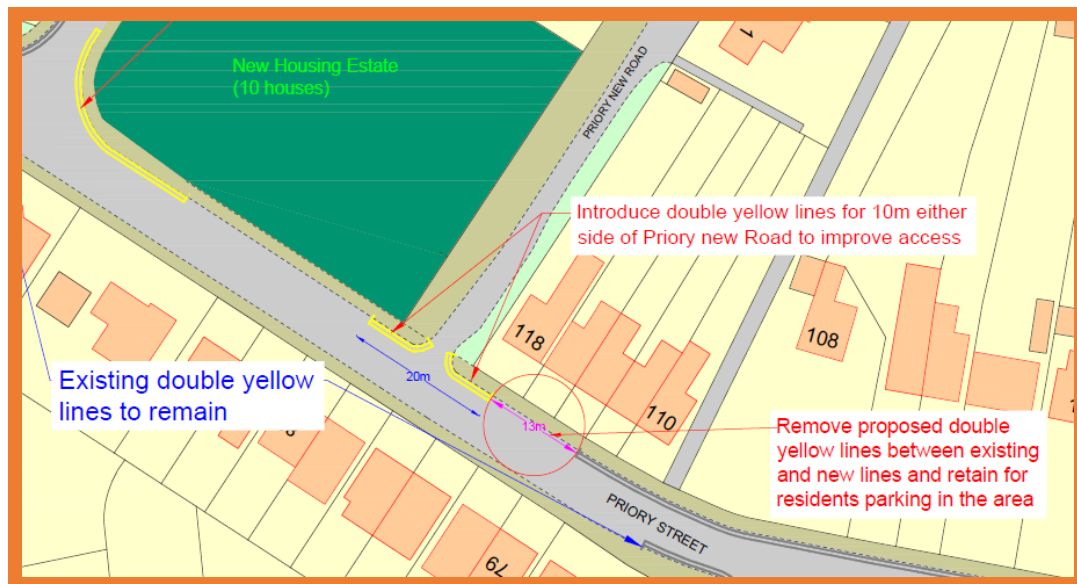
Following the consultation it is considered appropriate to reduce the section of double yellow line on the South side of Lypiatt Road to align with the restrictions on the North side.

## Priority Street

### *Initial proposal*



### *Amended Proposal*



Following the consultation it has been decided that the extent of the restriction will be reduced to allow an element of parking away from Priory New Road junction. This will serve the purpose of the restriction whilst also taking into account the comments received.