

Appendix A: Amended settlement boundaries

East Wiltshire Housing Market Area

Devizes Community Area

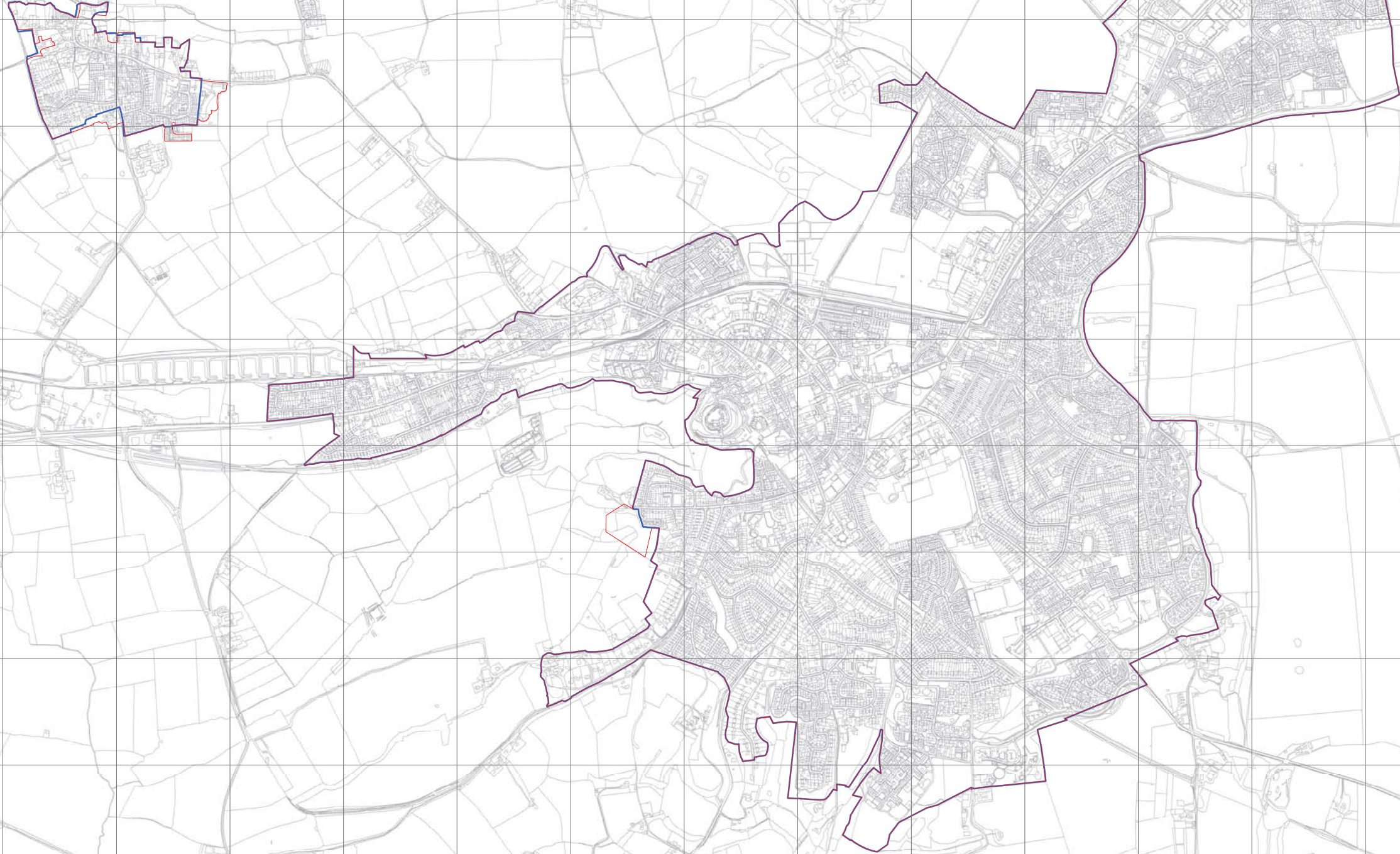
A.1 The following settlement boundaries in the Devizes Community Area have been reviewed by the Wiltshire Housing Site Allocations Plan:

- Devizes (see below)
- Bromham
- Market Lavington
- Rowde
- West Lavington and Littleton Panell, and
- Worton

A.2 Devizes has a made Neighbourhood Plan which has reviewed its settlement boundary. The Devizes Neighbourhood Plan had the intention of including its site allocations within its settlement boundary however one allocation was omitted in error. Wiltshire Council has not conducted a wholesale review of the settlement boundary of Devizes however it does include the site omitted from the boundary in error in the Neighbourhood Plan.

A.3 The settlement boundaries for Potterne and Urchfont have not been reviewed because of neighbourhood plans.

Devises
Proposals for Revised Settlement Boundaries



SettlementBoundaryReview_PreSubmission
Existing settlement boundary

A B C D E F G H I J K L M N O P Q

1

**Bromham
Proposals for Revised Settlement Boundaries**

1

2

2

3

3

4

4

5

5

6

6

7

7

8

8

9

9

10

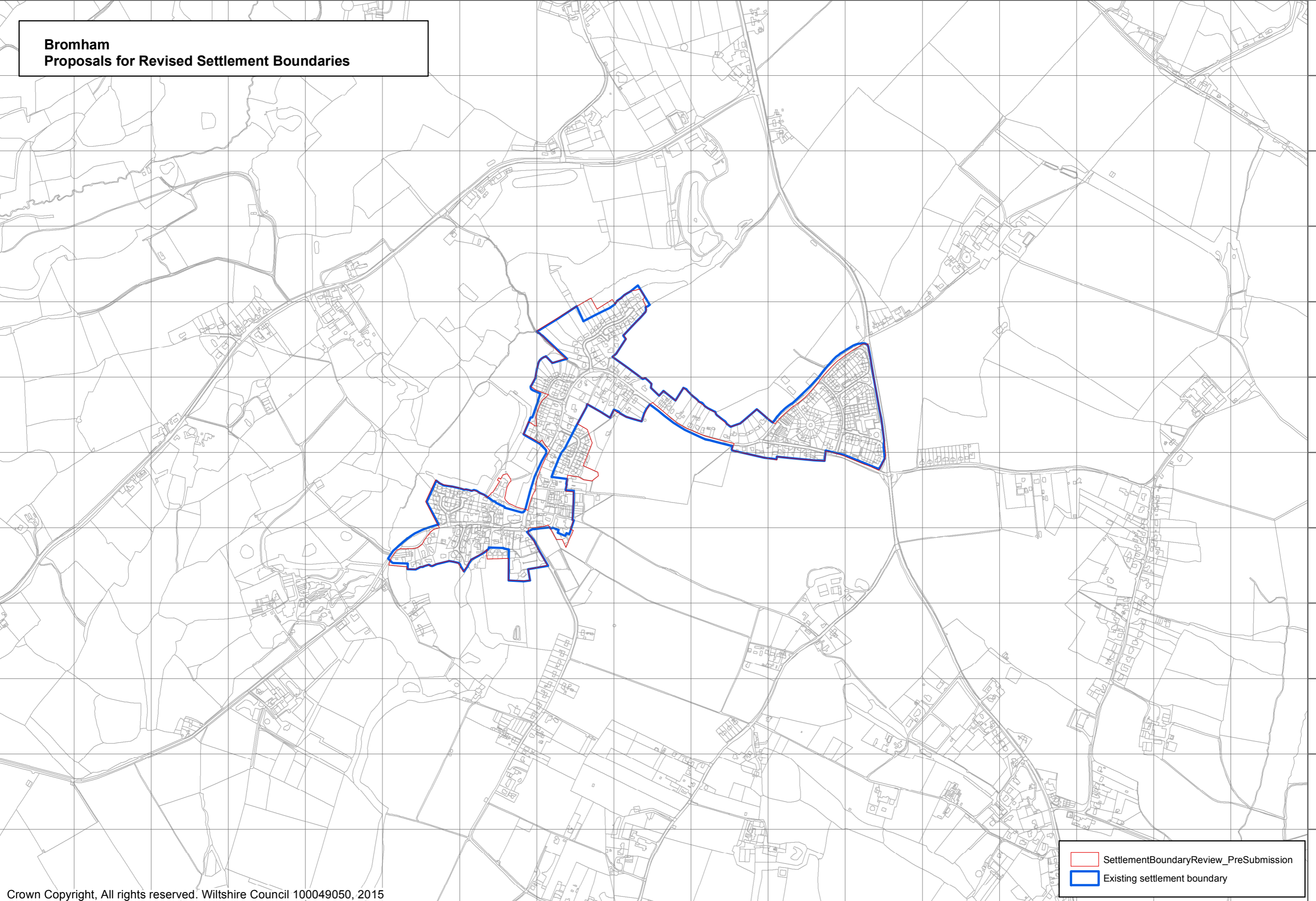
10

11

11

12

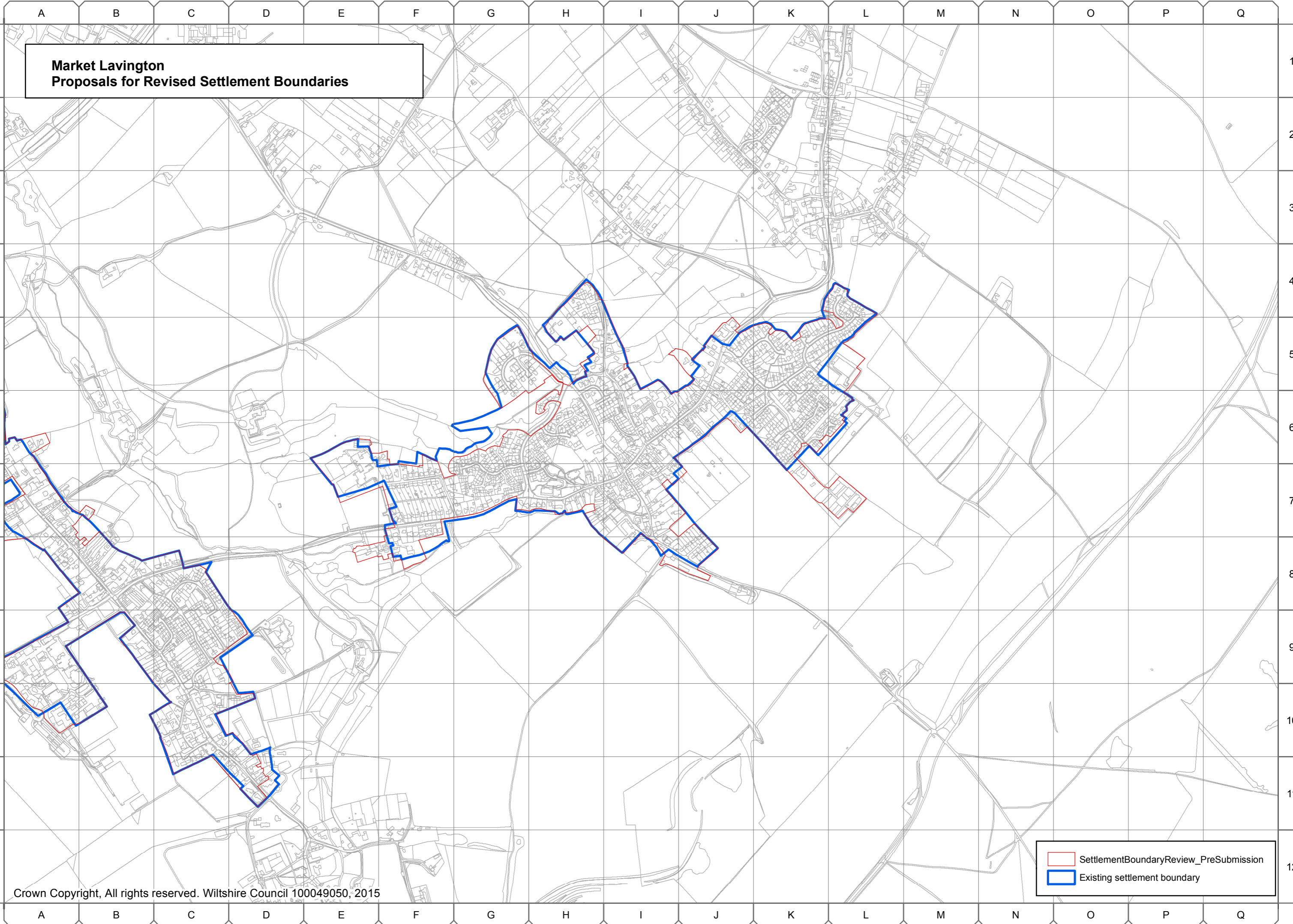
12



SettlementBoundaryReview_PreSubmission
 Existing settlement boundary

A B C D E F G H I J K L M N O P Q

**Market Lavington
Proposals for Revised Settlement Boundaries**



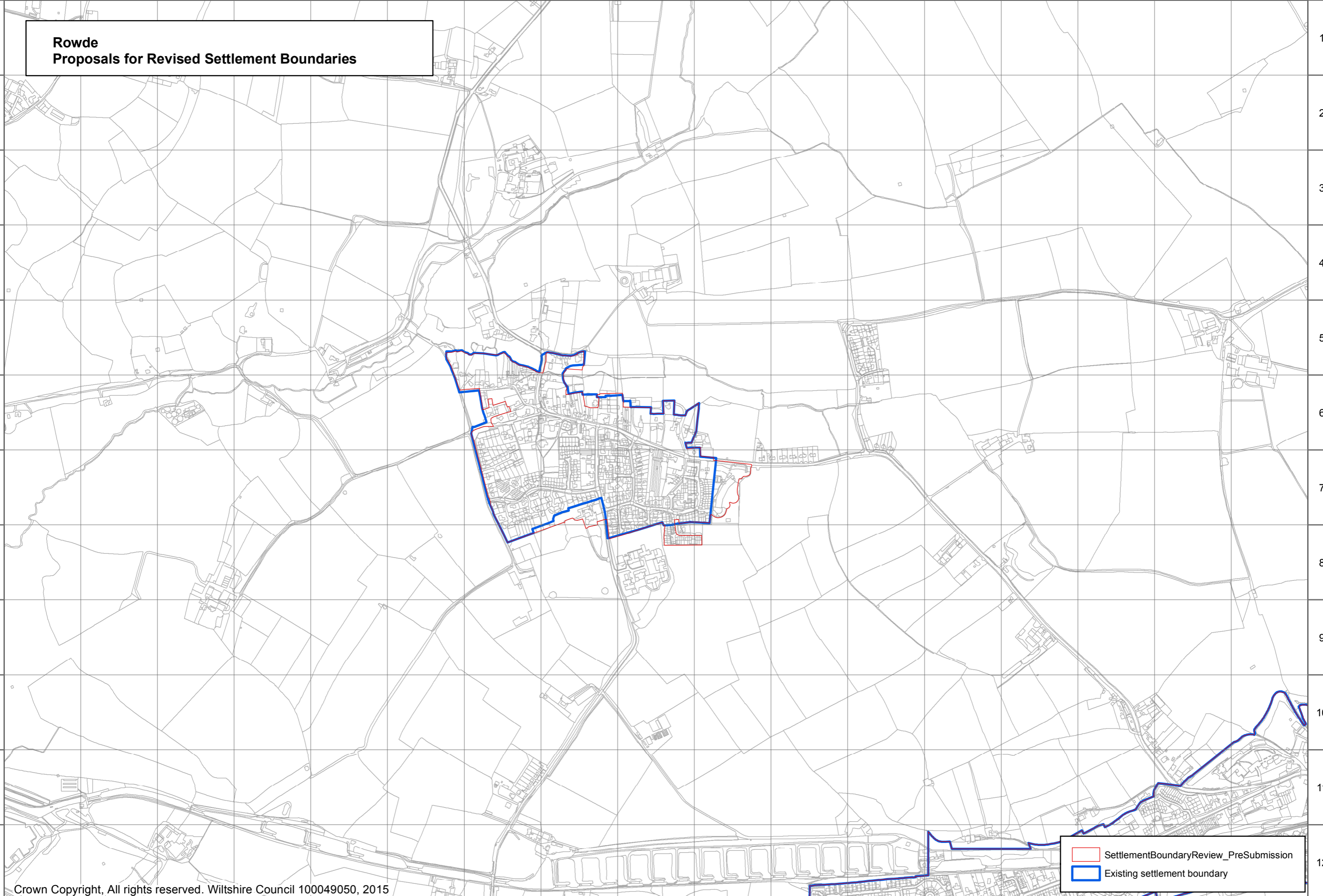
SettlementBoundaryReview_PreSubmission
Existing settlement boundary

A B C D E F G H I J K L M N O P Q

1
2
3
4
5
6
7
8
9
10
11
12

1
2
3
4
5
6
7
8
9
10
11
12

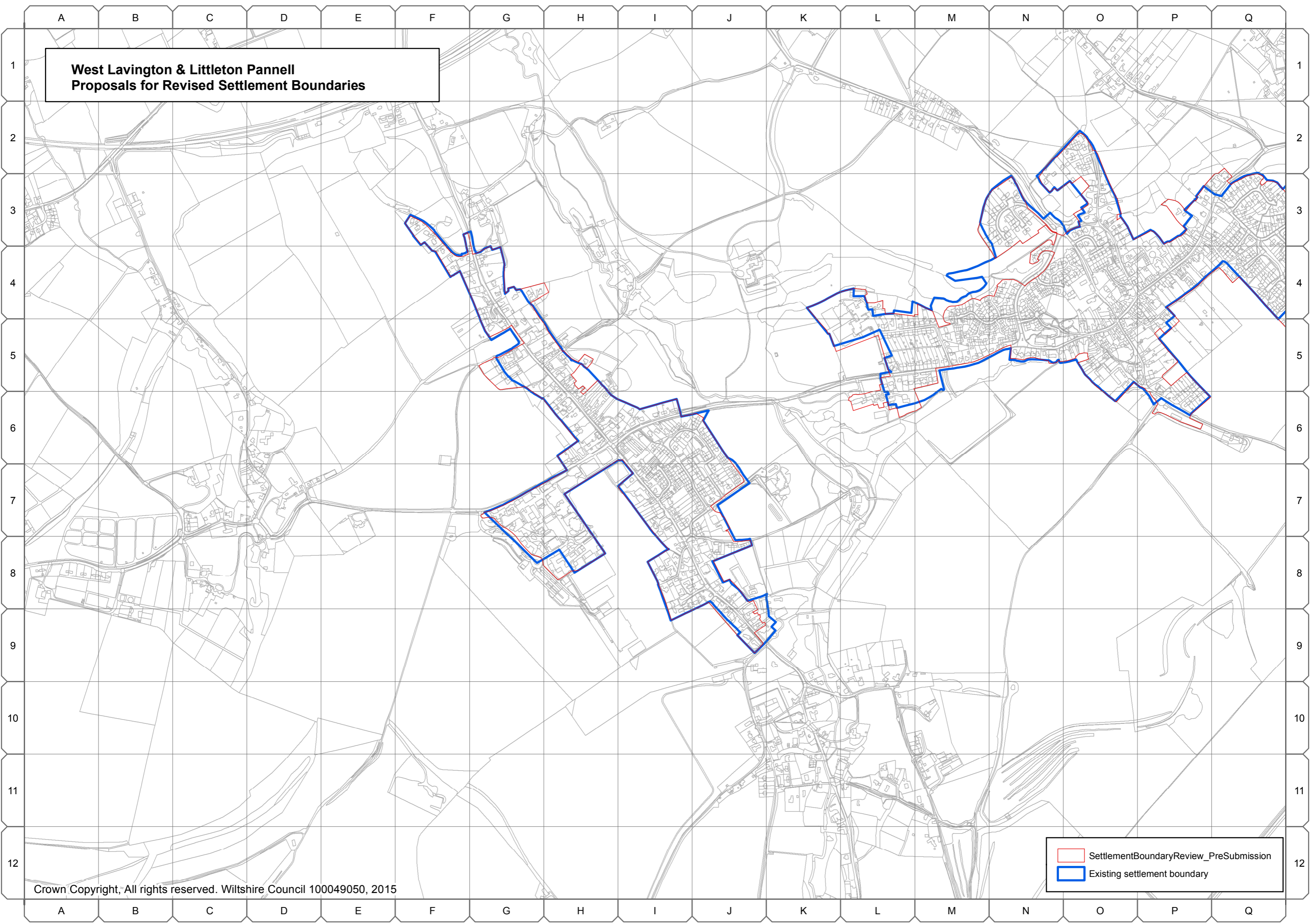
**Rowde
Proposals for Revised Settlement Boundaries**





SettlementBoundaryReview_PreSubmission
Existing settlement boundary

A B C D E F G H I J K L M N O P Q

**West Lavington & Littleton Pannell
Proposals for Revised Settlement Boundaries**



	SettlementBoundaryReview_PreSubmission
	Existing settlement boundary

A B C D E F G H I J K L M N O P Q

1
2
3
4
5
6
7
8
9
10
11
12

**Worton
Proposals for Revised Settlement Boundaries**

1
2
3
4
5
6
7
8
9
10
11
12



SettlementBoundaryReview_PreSubmission
Existing settlement boundary

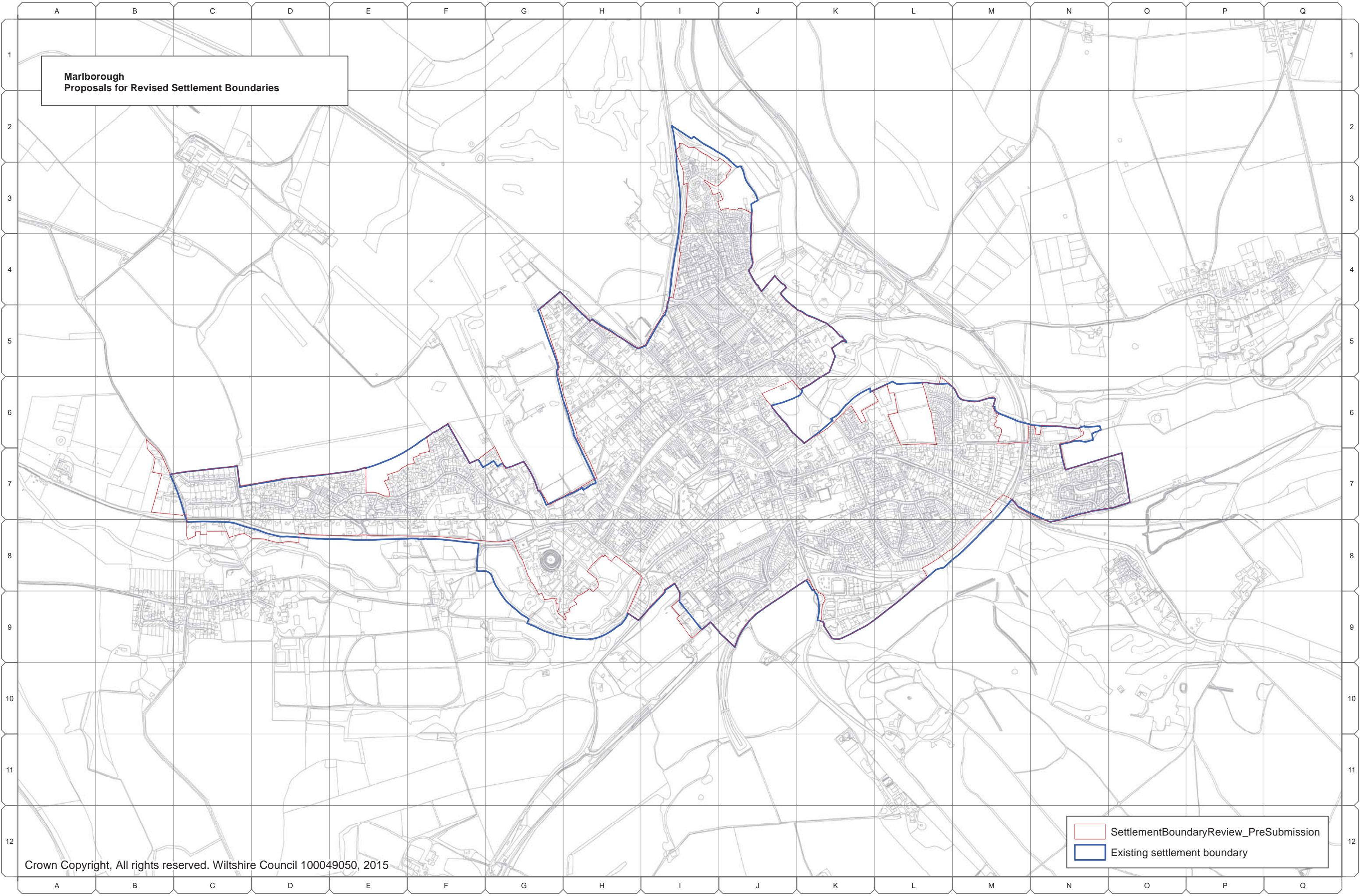
A B C D E F G H I J K L M N O P Q

Marlborough Community Area

A.10 The following settlement boundaries in the Marlborough Community Area have been reviewed by the Wiltshire Housing Site Allocations Plan:

- Marlborough
- Aldbourne
- Baydon
- Broad Hinton, and
- Ramsbury

**Marlborough
Proposals for Revised Settlement Boundaries**



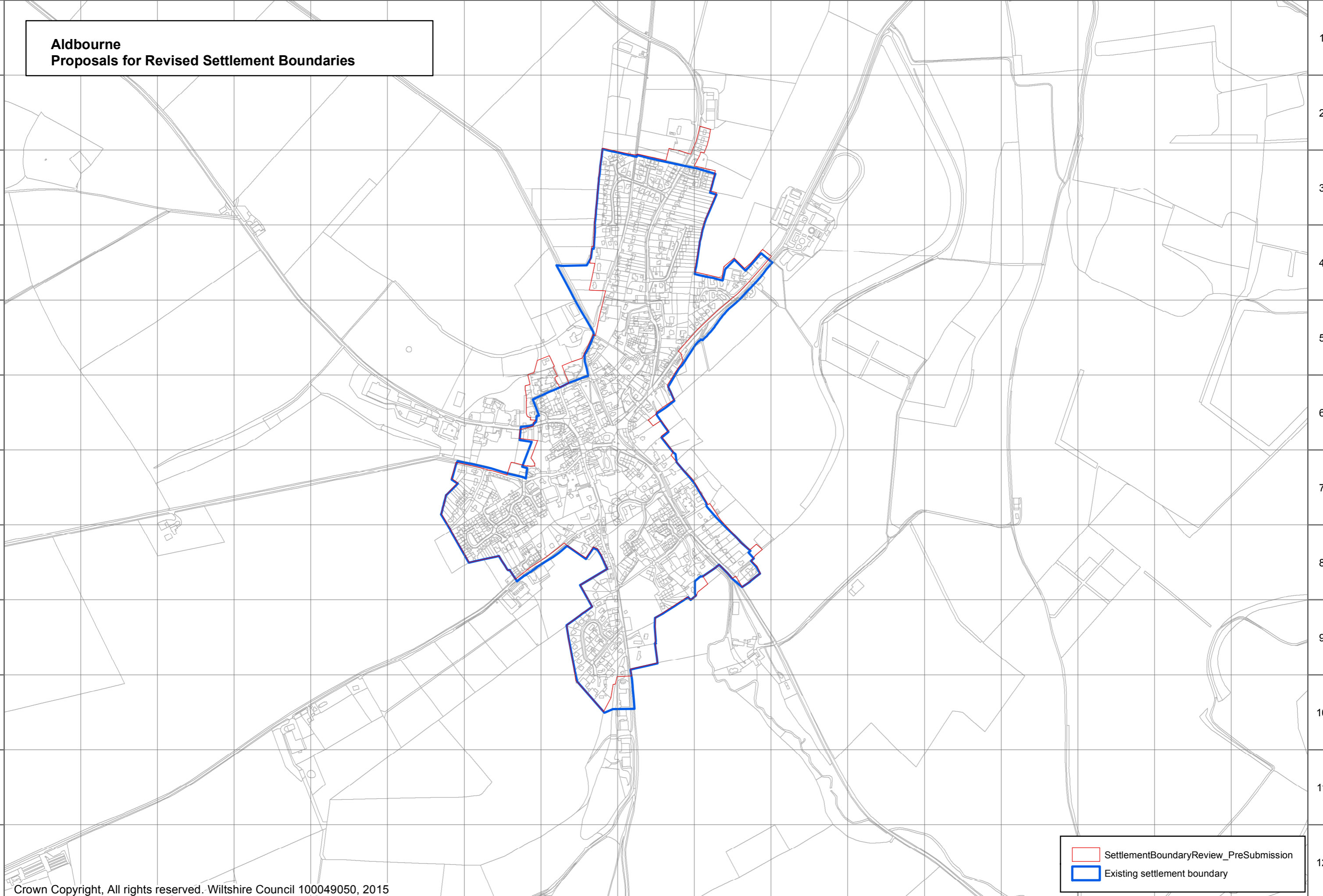
SettlementBoundaryReview_PreSubmission
Existing settlement boundary

A B C D E F G H I J K L M N O P Q

1
2
3
4
5
6
7
8
9
10
11
12

**Aldbourn
Proposals for Revised Settlement Boundaries**

1
2
3
4
5
6
7
8
9
10
11
12



SettlementBoundaryReview_PreSubmission
Existing settlement boundary

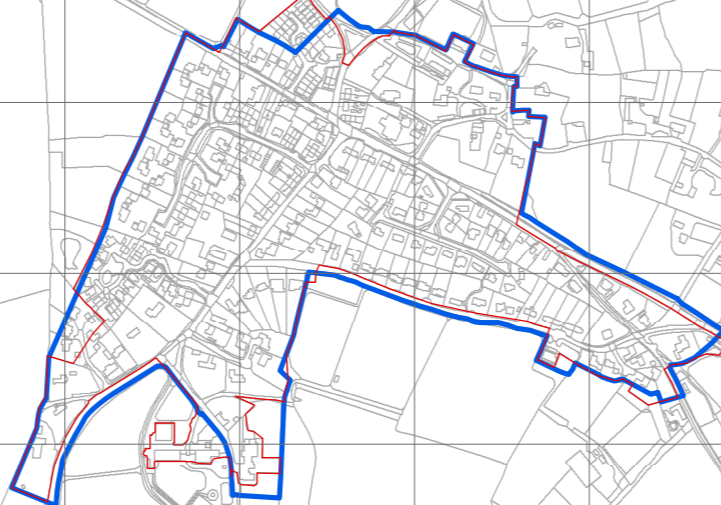
A B C D E F G H I J K L M N O P Q

A B C D E F G H I J K L M N O P Q

1
2
3
4
5
6
7
8
9
10
11
12

**Baydon
Proposals for Revised Settlement Boundaries**

1
2
3
4
5
6
7
8
9
10
11
12



SettlementBoundaryReview_PreSubmission
Existing settlement boundary

A B C D E F G H I J K L M N O P Q

**Broad Hinton
Proposals for Revised Settlement Boundaries**

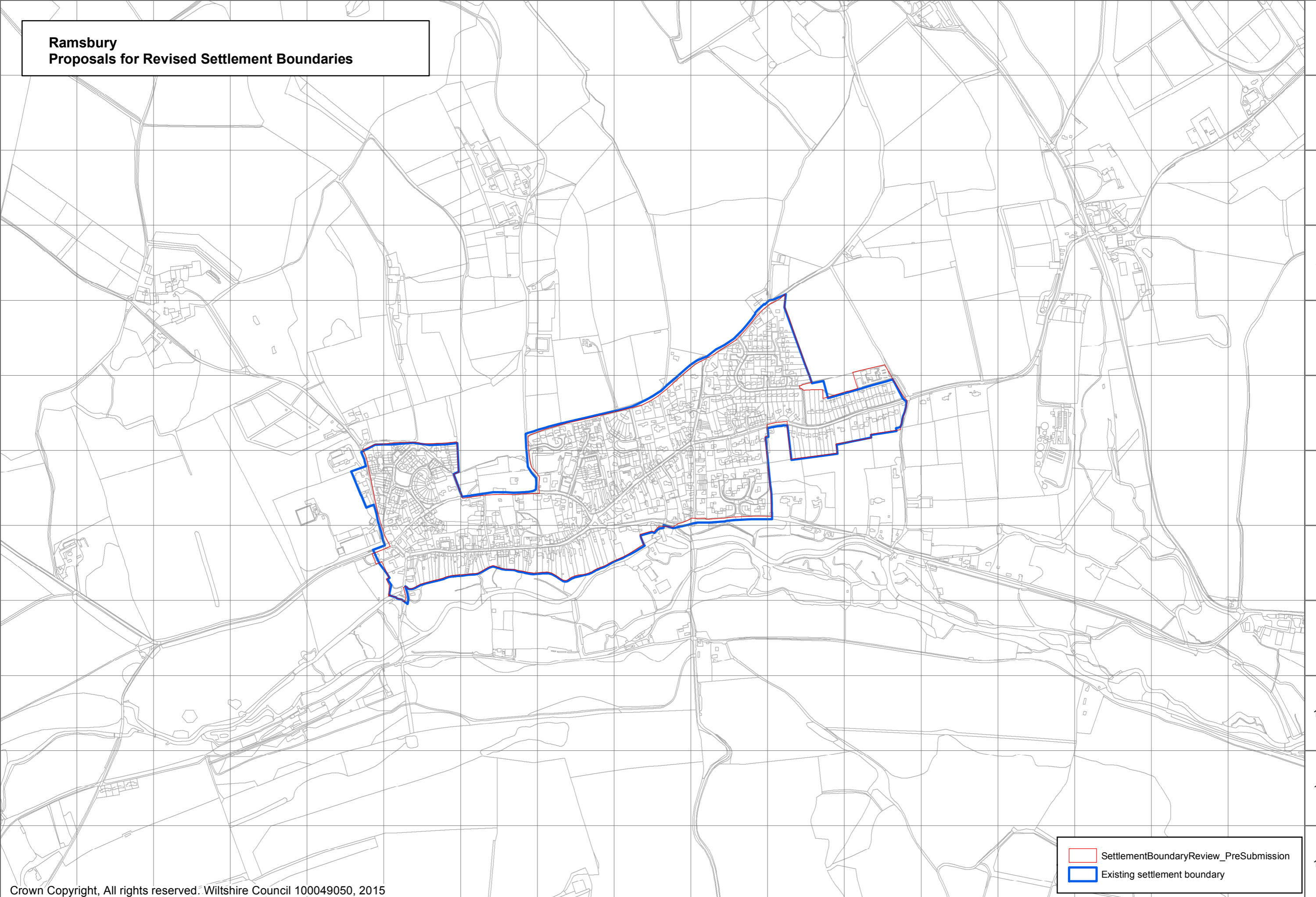
- SettlementBoundaryReview_PreSubmission
- Existing settlement boundary

A B C D E F G H I J K L M N O P Q

1
2
3
4
5
6
7
8
9
10
11
12

1
2
3
4
5
6
7
8
9
10
11
12

**Ramsbury
Proposals for Revised Settlement Boundaries**



SettlementBoundaryReview_PreSubmission
Existing settlement boundary

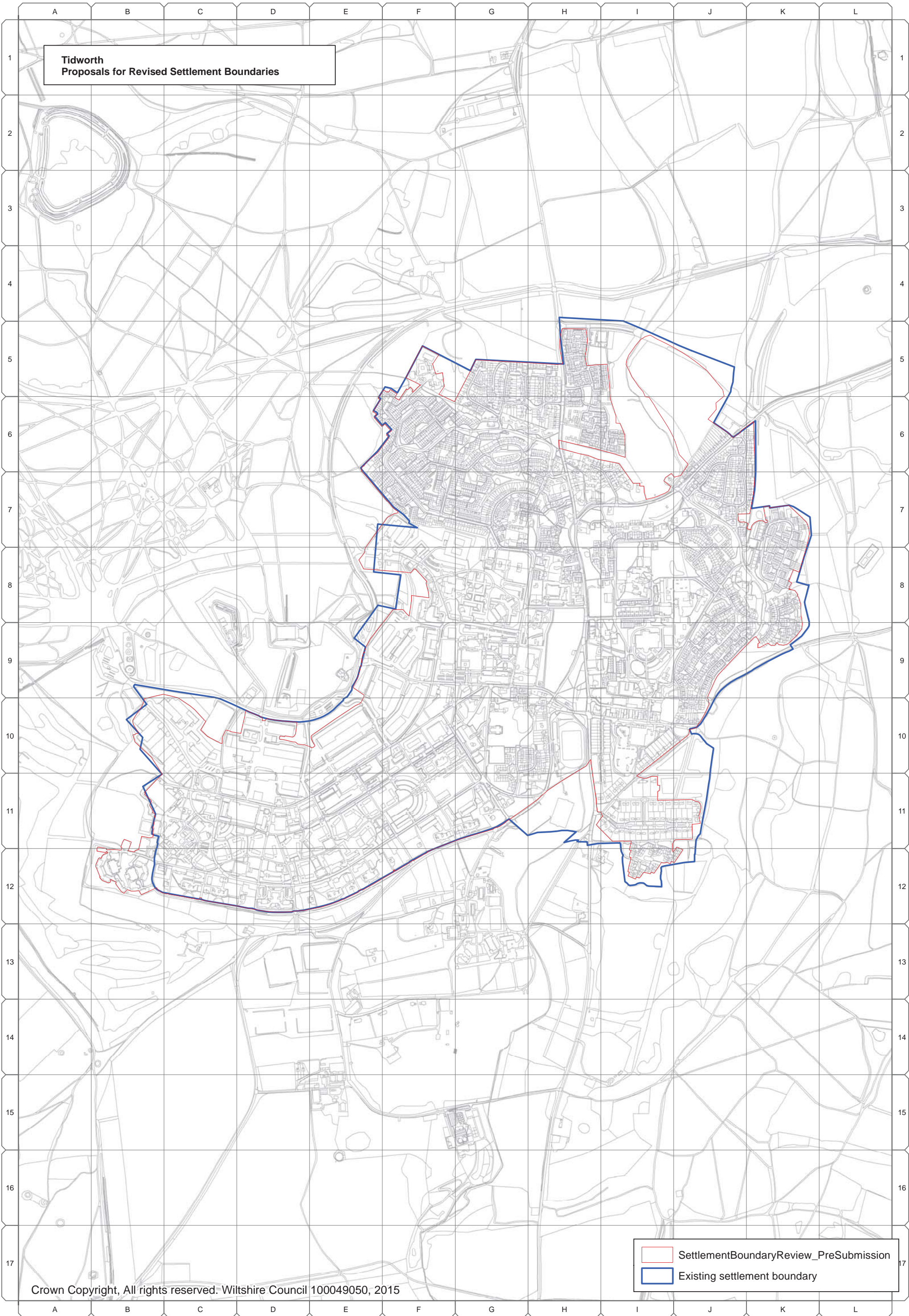
A B C D E F G H I J K L M N O P Q

Tidworth Community Area

A.16 The following settlement boundaries in the Tidworth Community Area have been reviewed by the Wiltshire Housing Site Allocations Plan:

- Tidworth
- Collingbourne Ducis
- Ludgershall, and
- Netheravon

**Tidworth
Proposals for Revised Settlement Boundaries**



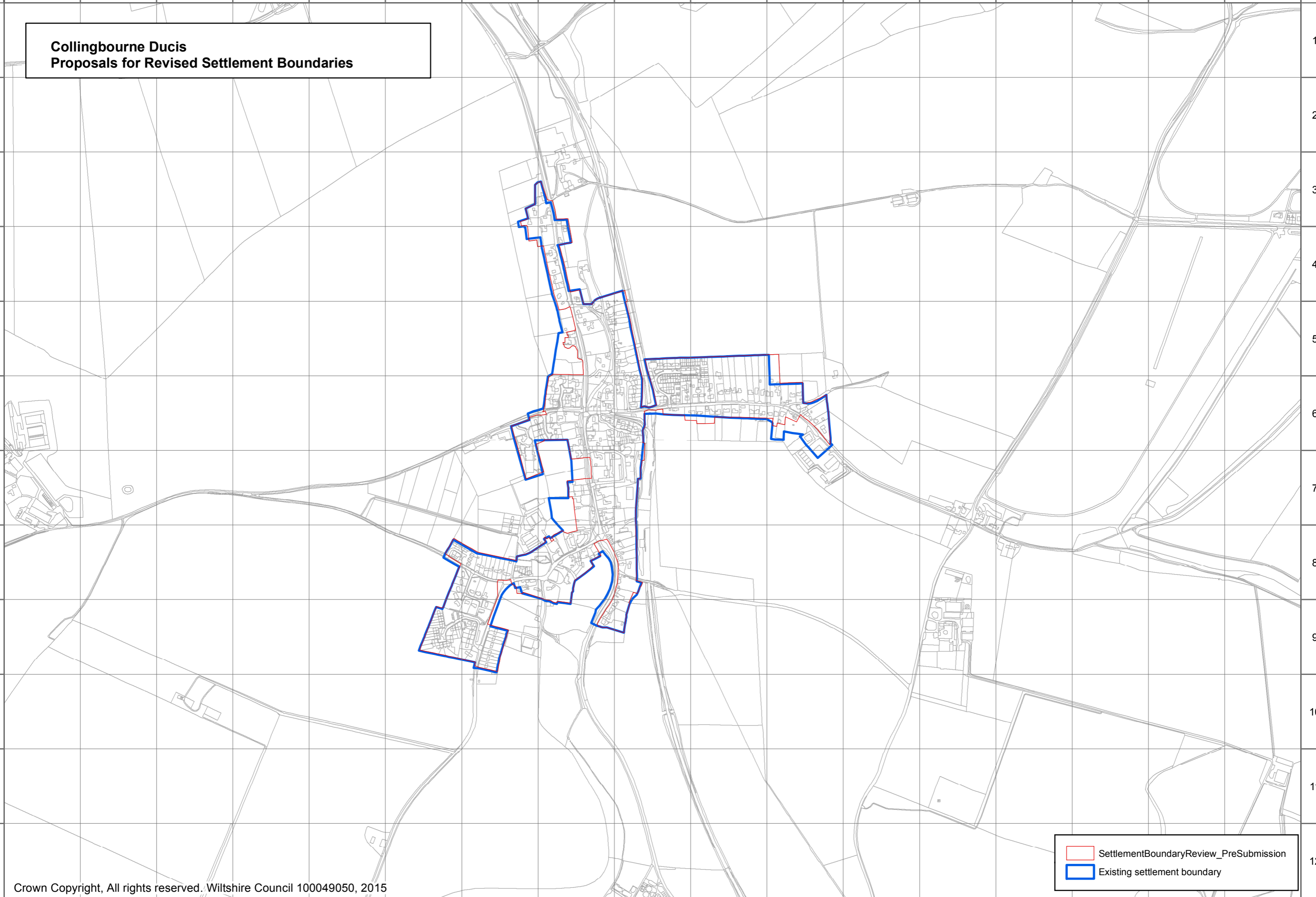
- SettlementBoundaryReview_PreSubmission
- Existing settlement boundary

A B C D E F G H I J K L M N O P Q

1
2
3
4
5
6
7
8
9
10
11
12

**Collingbourne Ducis
Proposals for Revised Settlement Boundaries**

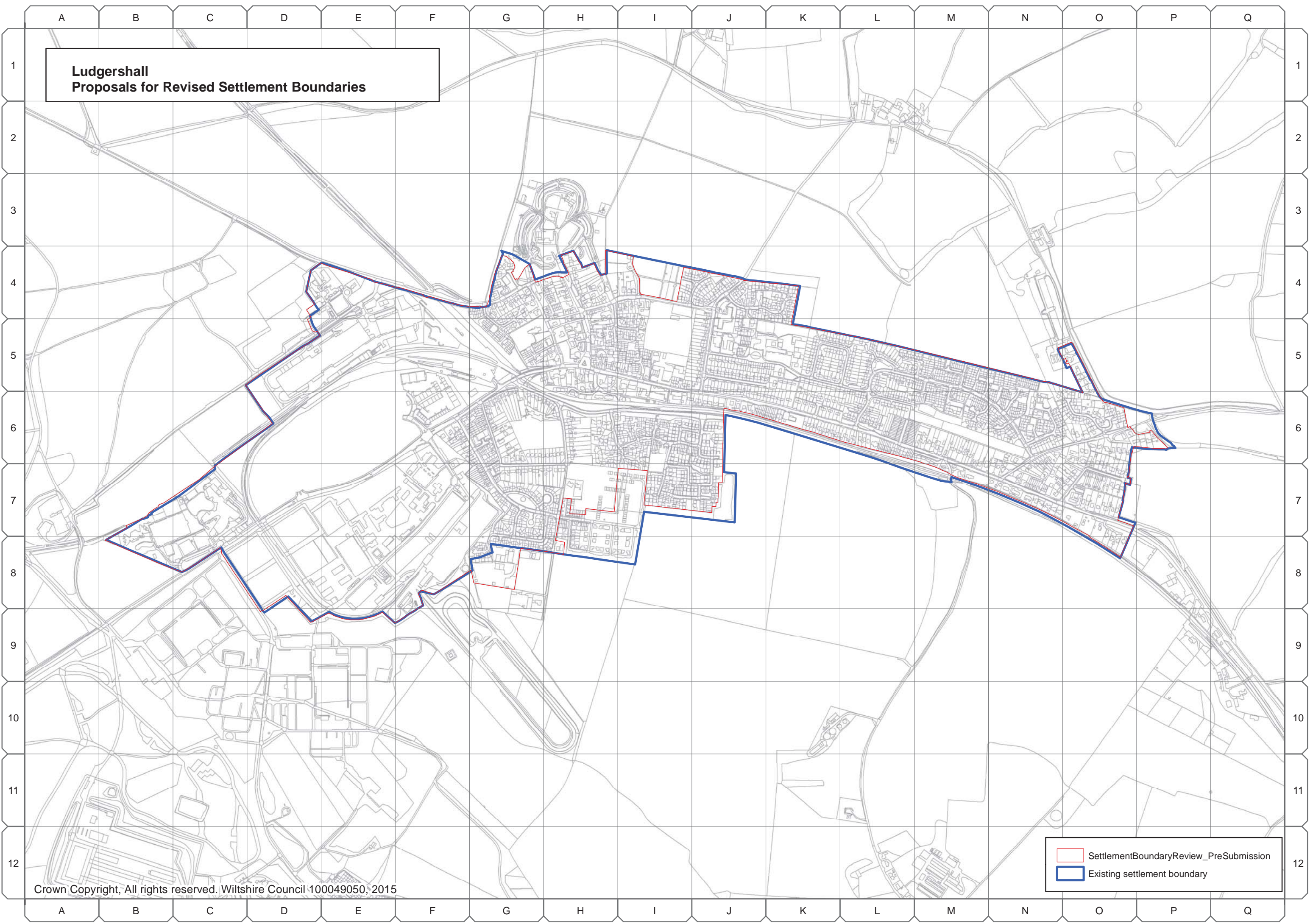
1
2
3
4
5
6
7
8
9
10
11
12



SettlementBoundaryReview_PreSubmission
Existing settlement boundary

A B C D E F G H I J K L M N O P Q

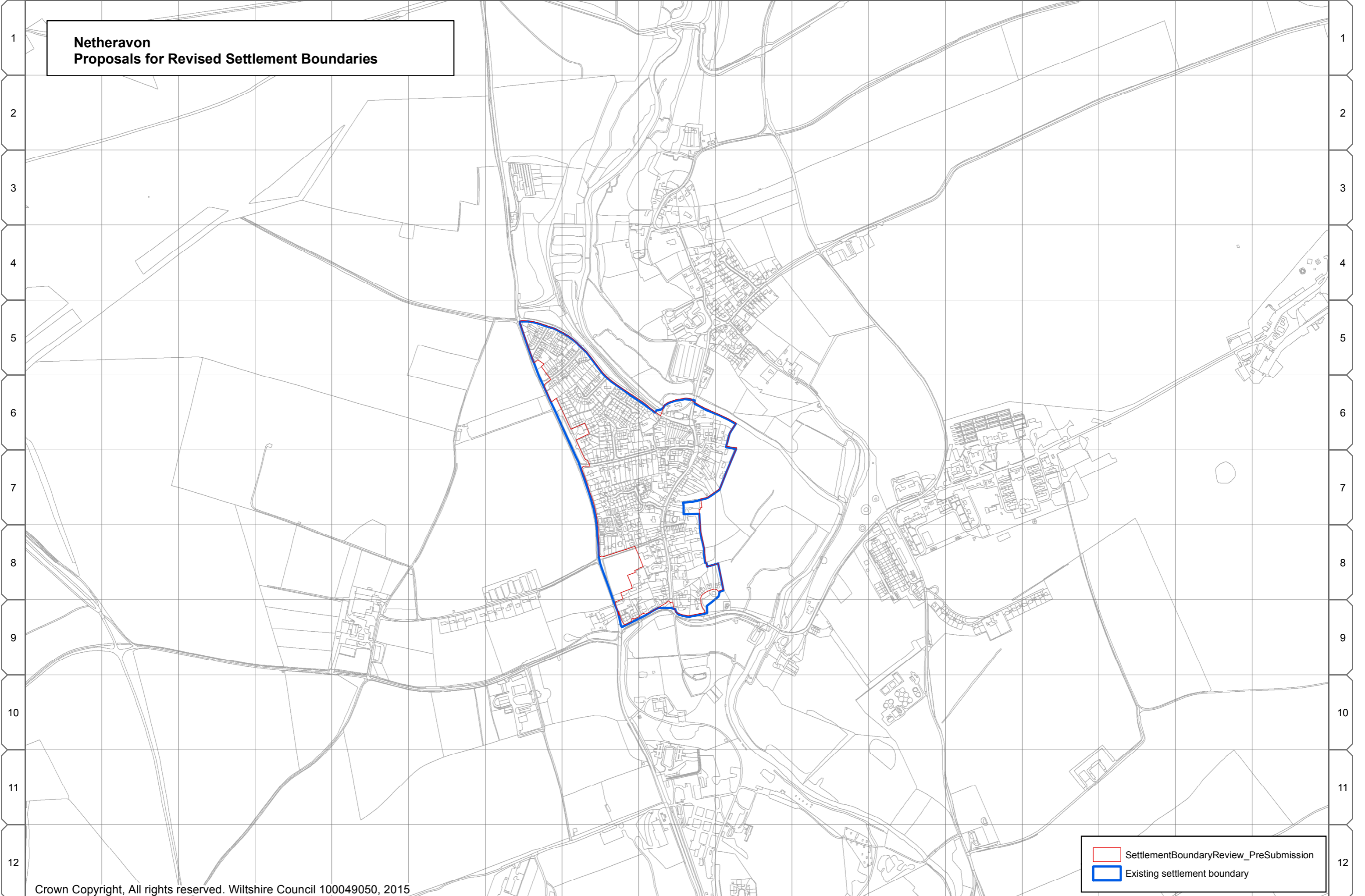
**Ludgershall
Proposals for Revised Settlement Boundaries**



SettlementBoundaryReview_PreSubmission
Existing settlement boundary

A B C D E F G H I J K L M N O P Q

**Netheravon
Proposals for Revised Settlement Boundaries**



1
2
3
4
5
6
7
8
9
10
11
12

1
2
3
4
5
6
7
8
9
10
11
12

SettlementBoundaryReview_PreSubmission
Existing settlement boundary

A B C D E F G H I J K L M N O P Q

Pewsey Community Area

A.21 The following settlement boundaries in the Pewsey Community Area have been reviewed by the Wiltshire Housing Site Allocations Plan:

- Burbage
- Great Bedwyn
- Shalbourne, and
- Upavon

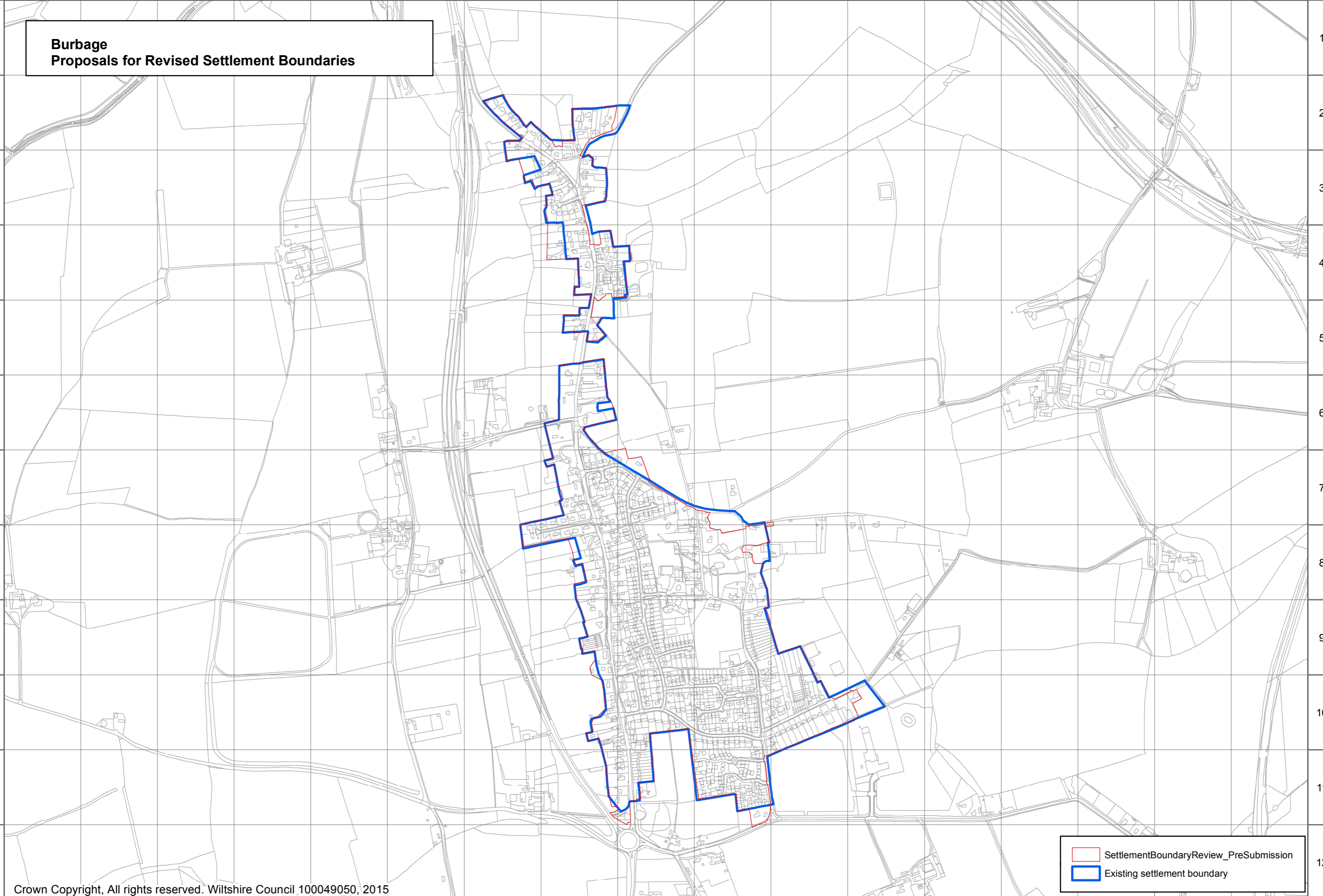
A.22 The settlement boundary for Pewsey has not been reviewed because of a neighbourhood plan.

A B C D E F G H I J K L M N O P Q

1
2
3
4
5
6
7
8
9
10
11
12

**Burbage
Proposals for Revised Settlement Boundaries**

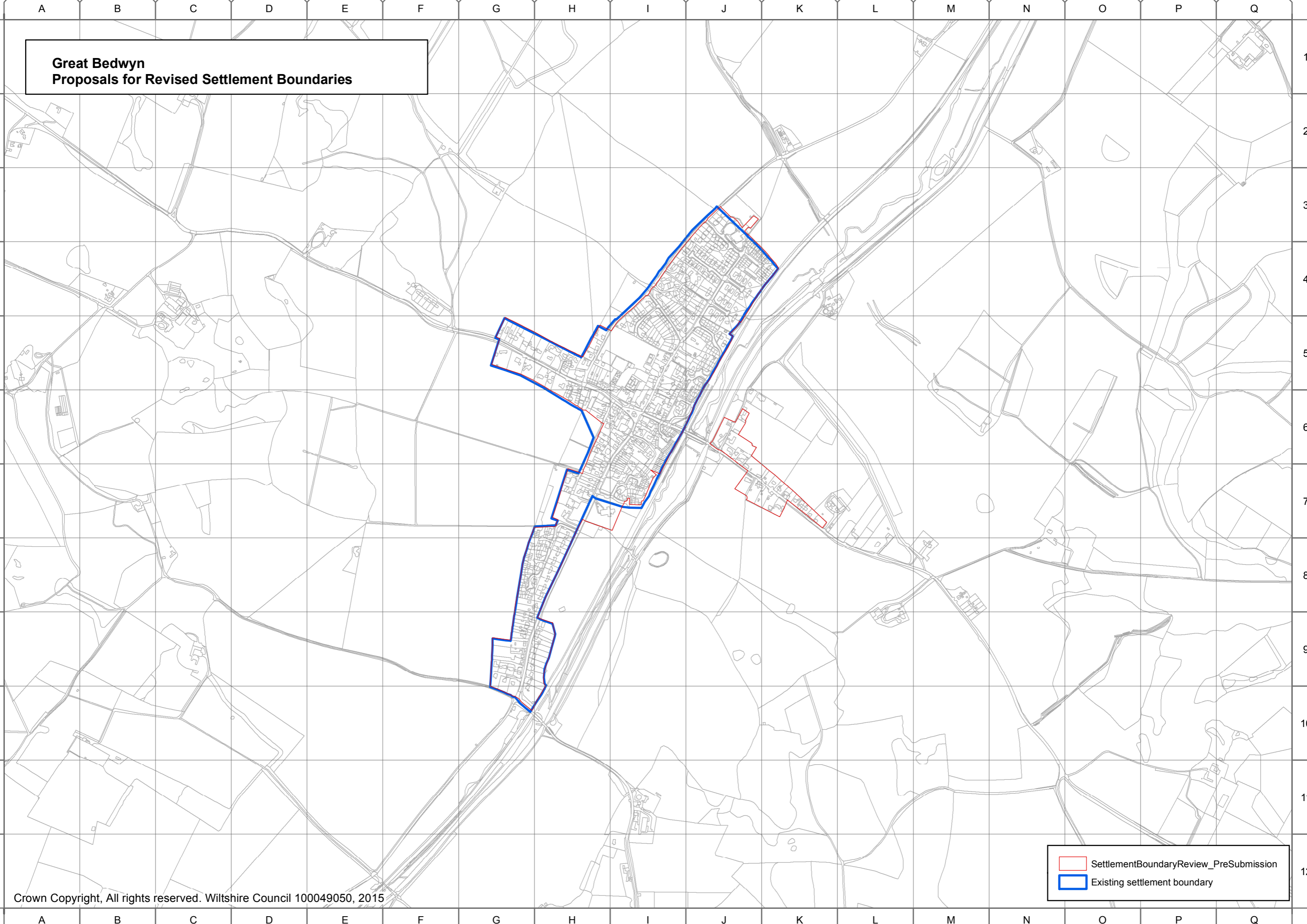
1
2
3
4
5
6
7
8
9
10
11
12



SettlementBoundaryReview_PreSubmission
Existing settlement boundary

A B C D E F G H I J K L M N O P Q

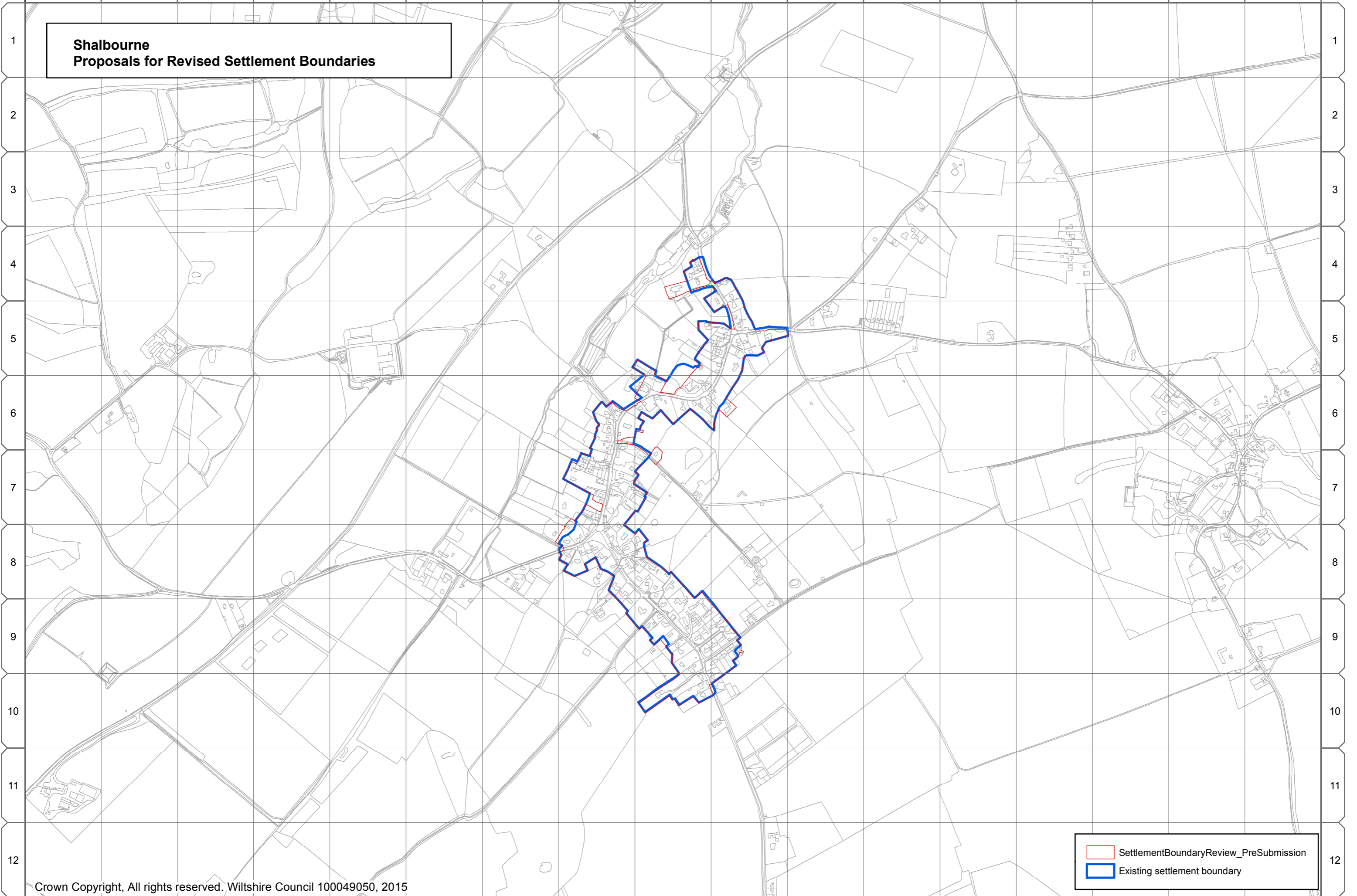
**Great Bedwyn
Proposals for Revised Settlement Boundaries**



SettlementBoundaryReview_PreSubmission
Existing settlement boundary

A B C D E F G H I J K L M N O P Q

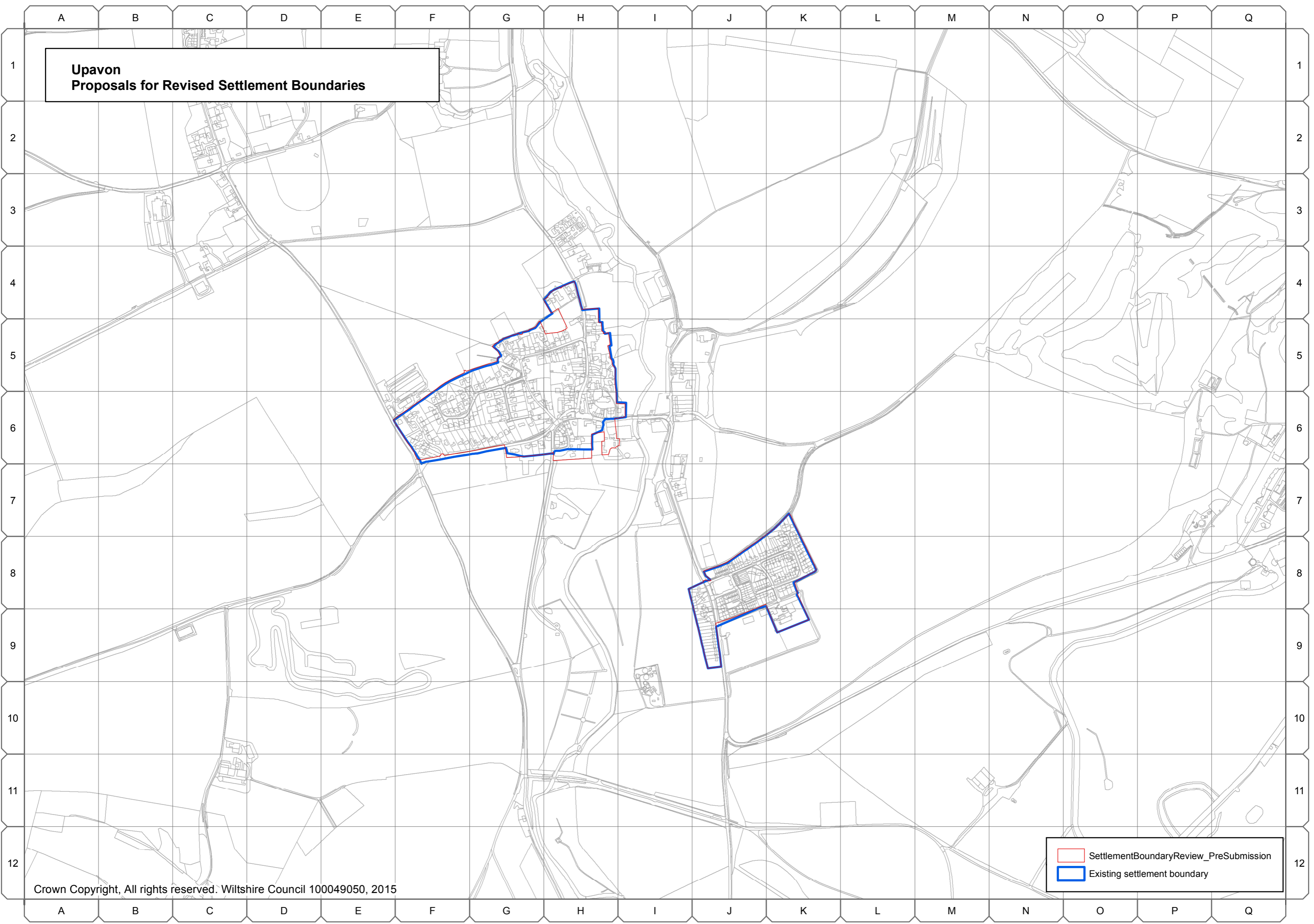
**Shalbourne
Proposals for Revised Settlement Boundaries**



SettlementBoundaryReview_PreSubmission
Existing settlement boundary

A B C D E F G H I J K L M N O P Q

**Upavon
Proposals for Revised Settlement Boundaries**



SettlementBoundaryReview_PreSubmission
Existing settlement boundary