

## North and West Wiltshire Housing Market Area

### Bradford on Avon Community Area

**A.27** The following settlement boundaries in the Bradford on Avon Community Area have been reviewed by the Wiltshire Housing Site Allocations Plan:

- Westwood, and
- Winsley

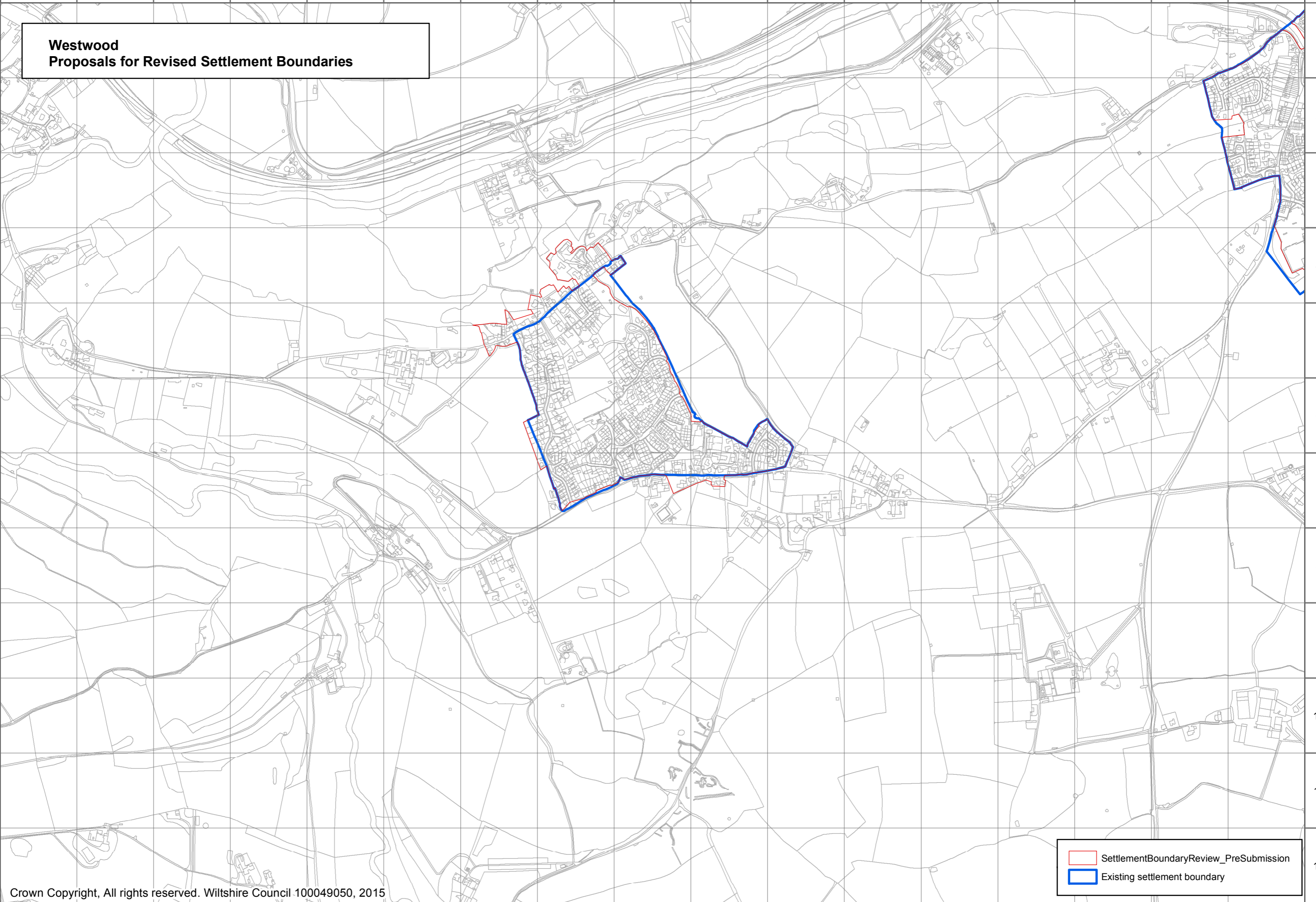
**A.28** The settlement boundaries for Bradford on Avon and Holt have not been reviewed because of neighbourhood plans.

A B C D E F G H I J K L M N O P Q

**Westwood  
Proposals for Revised Settlement Boundaries**

1  
2  
3  
4  
5  
6  
7  
8  
9  
10  
11  
12

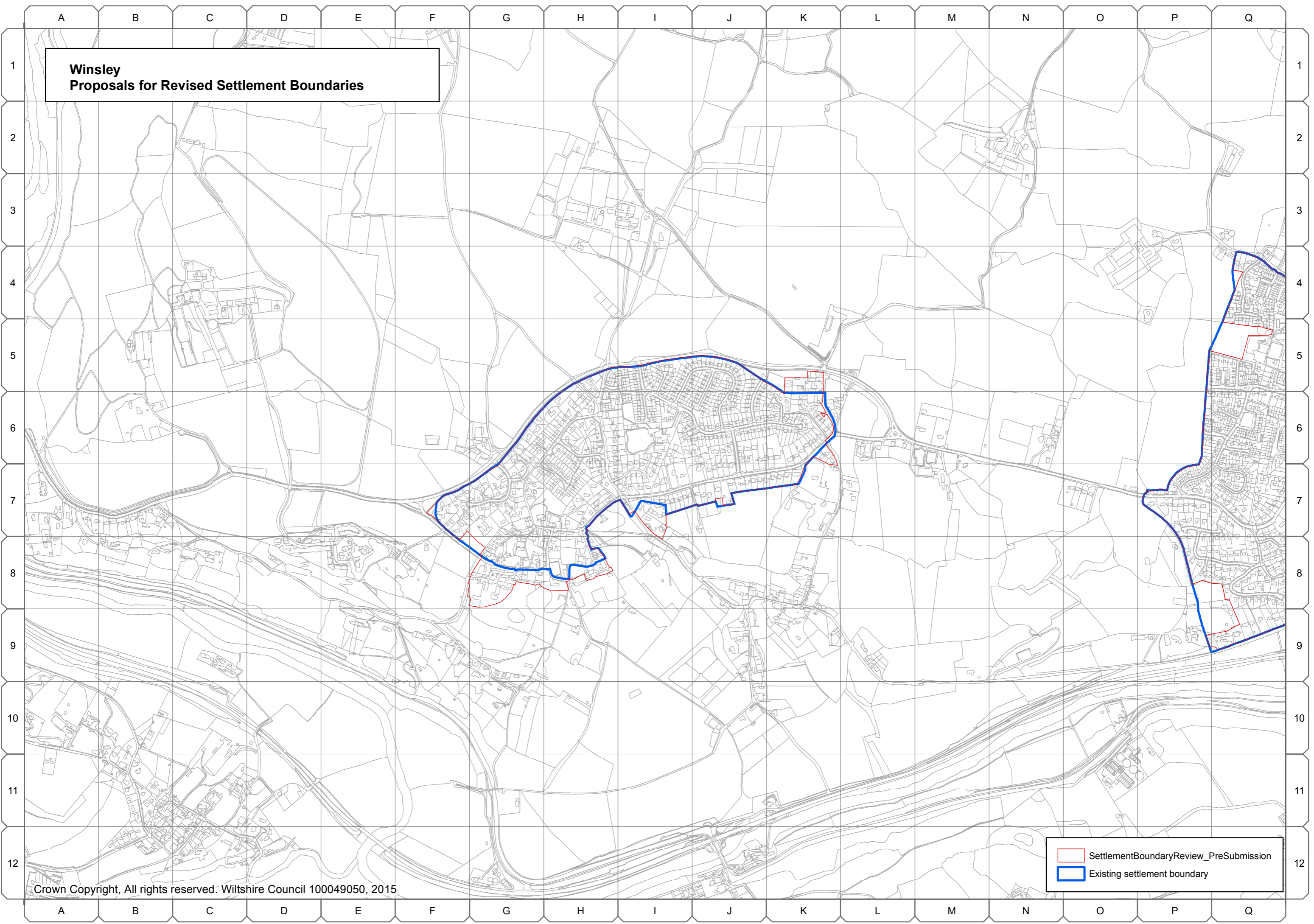
1  
2  
3  
4  
5  
6  
7  
8  
9  
10  
11  
12



SettlementBoundaryReview\_PreSubmission  
Existing settlement boundary

A B C D E F G H I J K L M N O P Q

**Winsley  
Proposals for Revised Settlement Boundaries**



SettlementBoundaryReview\_PreSubmission  
Existing settlement boundary

## Calne Community Area

**A.31** The following settlement boundaries in the Calne Community Area have been reviewed by the Wiltshire Housing Site Allocations Plan:

- Calne, and
- Studley and Derry Hill



**Calne  
Proposals for Revised Settlement Boundaries**

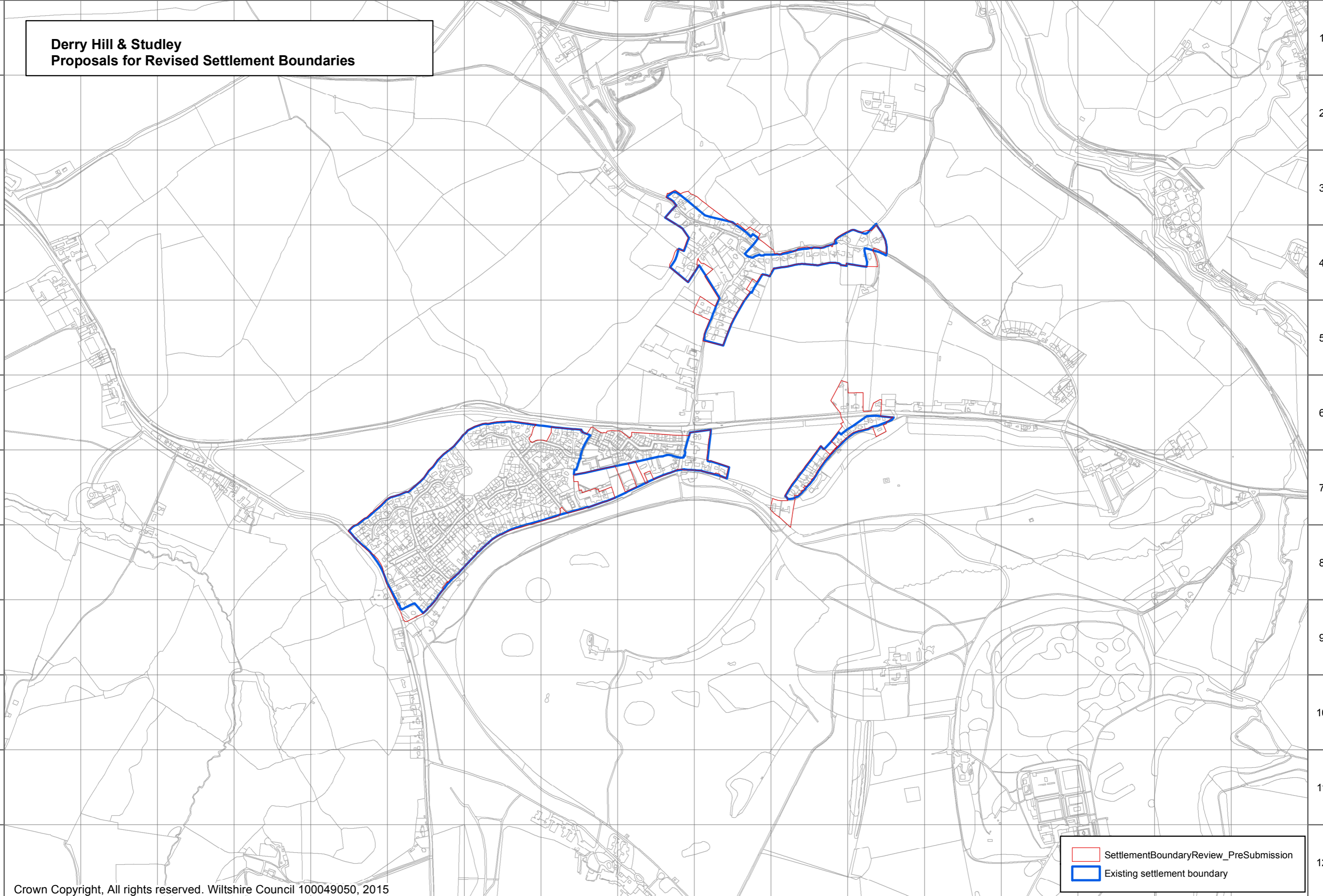
- SettlementBoundaryReview\_PreSubmission
- Existing settlement boundary

A B C D E F G H I J K L M N O P Q

1  
2  
3  
4  
5  
6  
7  
8  
9  
10  
11  
12

**Derry Hill & Studley  
Proposals for Revised Settlement Boundaries**

1  
2  
3  
4  
5  
6  
7  
8  
9  
10  
11  
12



SettlementBoundaryReview\_PreSubmission  
Existing settlement boundary

A B C D E F G H I J K L M N O P Q

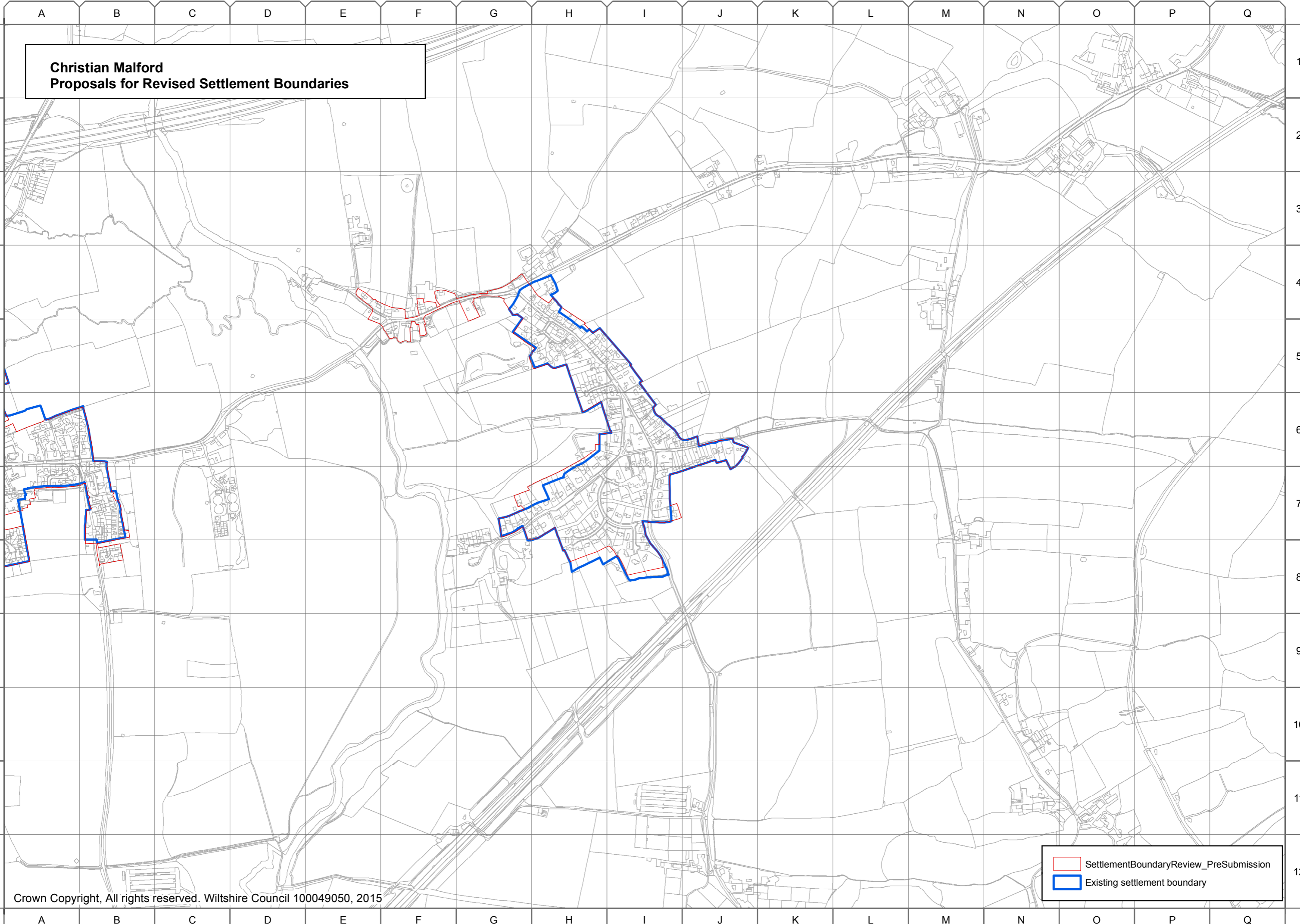
## Chippenham Community Area Remainder

**A.34** The following settlement boundaries in the Chippenham Community Area Remainder have been reviewed by the Wiltshire Housing Site Allocations Plan:

- Christian Malford
- Hullavington
- Kington St Michael
- Sutton Benger, and
- Yatton Keynell

**A.35** The settlement boundary for the town of Chippenham has been reviewed by the Chippenham Site Allocations Plan.

**Christian Malford  
Proposals for Revised Settlement Boundaries**



SettlementBoundaryReview\_PreSubmission  
Existing settlement boundary

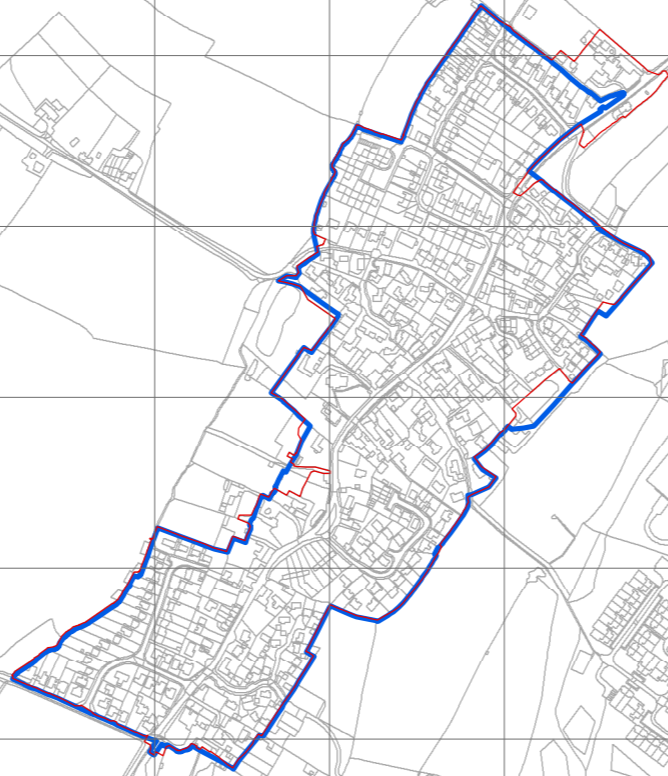


A B C D E F G H I J K L M N O P Q

1  
2  
3  
4  
5  
6  
7  
8  
9  
10  
11  
12

1  
2  
3  
4  
5  
6  
7  
8  
9  
10  
11  
12

**Hullavington  
Proposals for Revised Settlement Boundaries**



SettlementBoundaryReview\_PreSubmission  
Existing settlement boundary

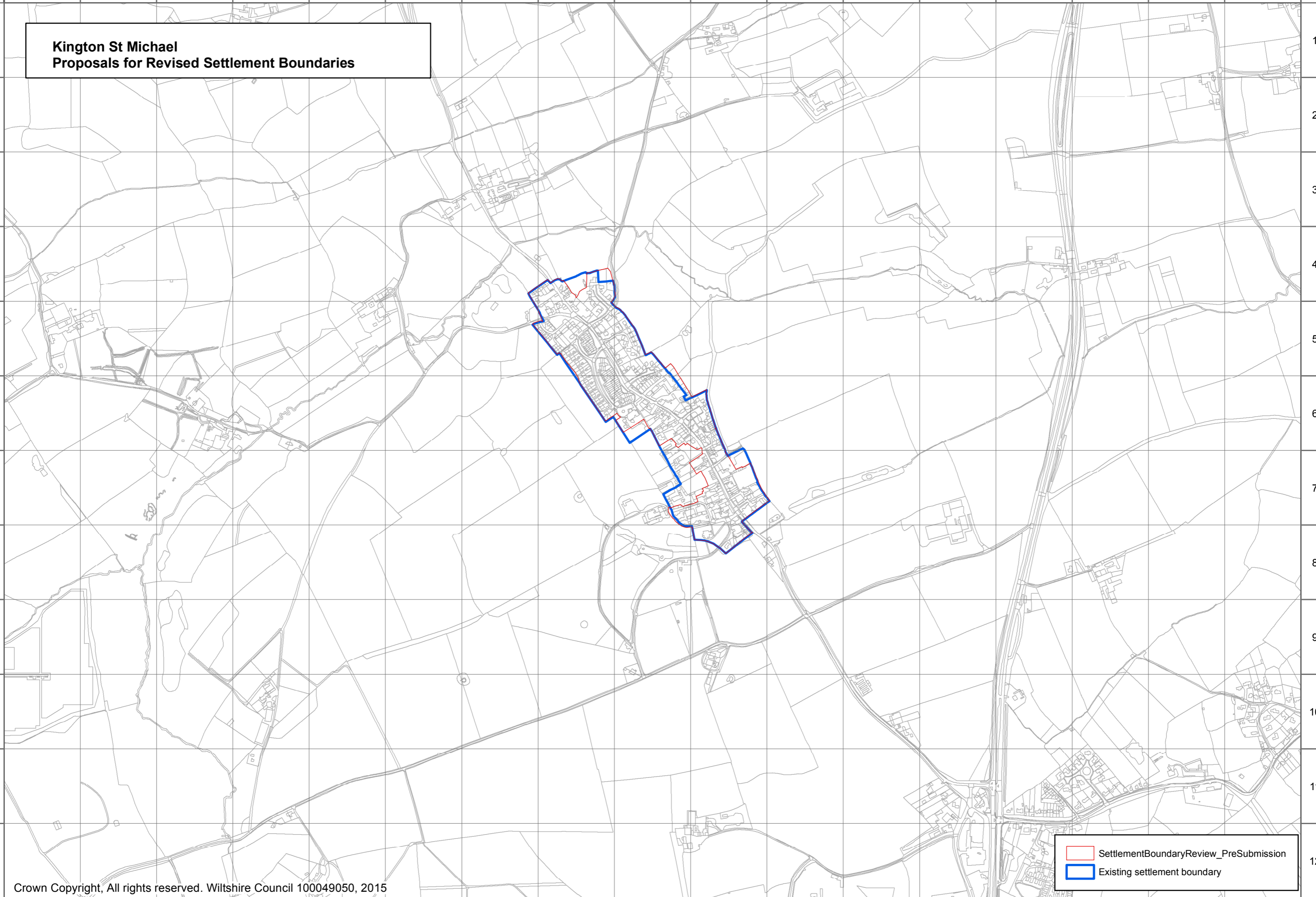
A B C D E F G H I J K L M N O P Q

A B C D E F G H I J K L M N O P Q

1  
2  
3  
4  
5  
6  
7  
8  
9  
10  
11  
12

1  
2  
3  
4  
5  
6  
7  
8  
9  
10  
11  
12

**Kington St Michael  
Proposals for Revised Settlement Boundaries**



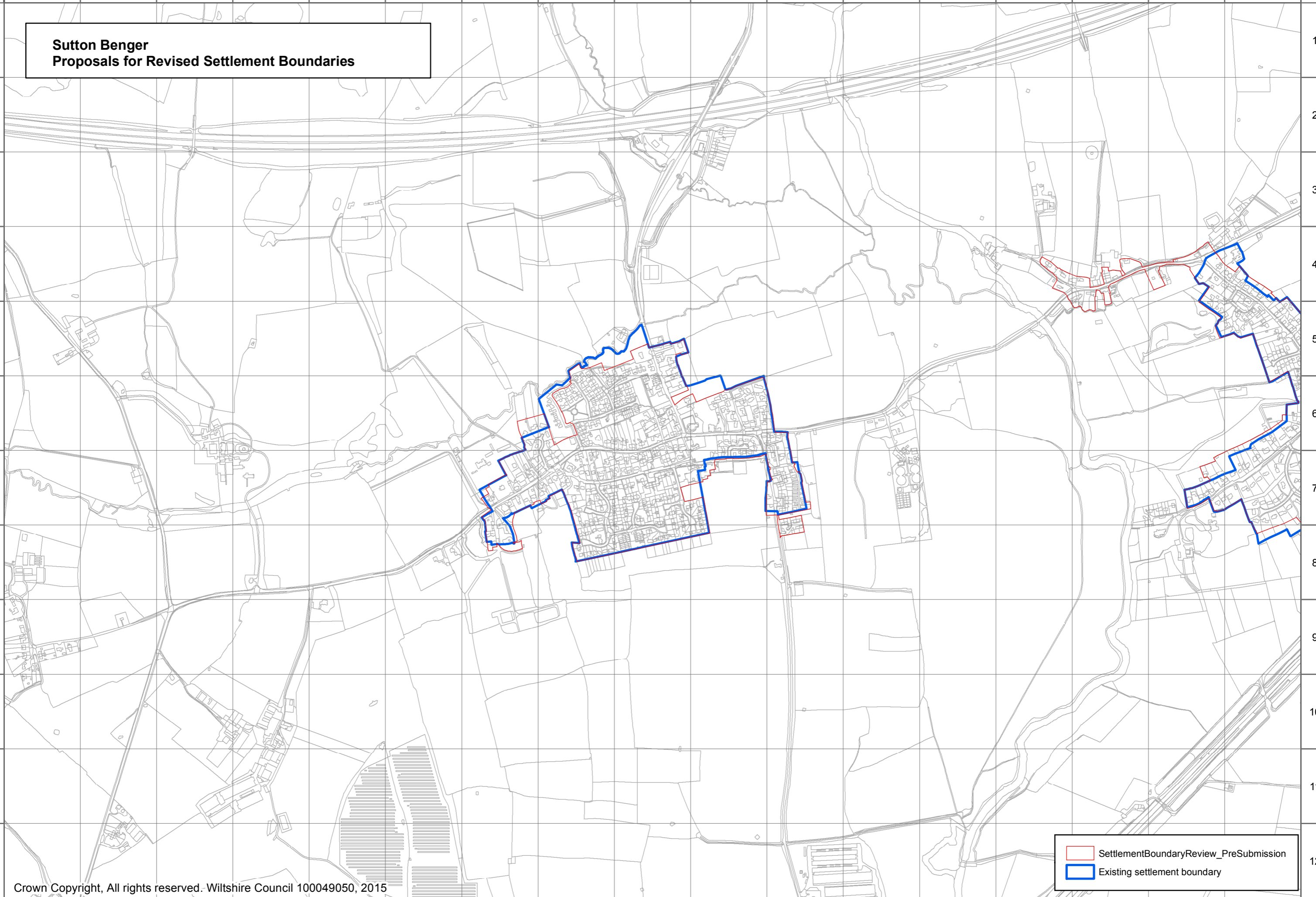
SettlementBoundaryReview\_PreSubmission  
Existing settlement boundary

A B C D E F G H I J K L M N O P Q

A B C D E F G H I J K L M N O P Q

1  
2  
3  
4  
5  
6  
7  
8  
9  
10  
11  
12

**Sutton Benger  
Proposals for Revised Settlement Boundaries**



SettlementBoundaryReview\_PreSubmission  
Existing settlement boundary

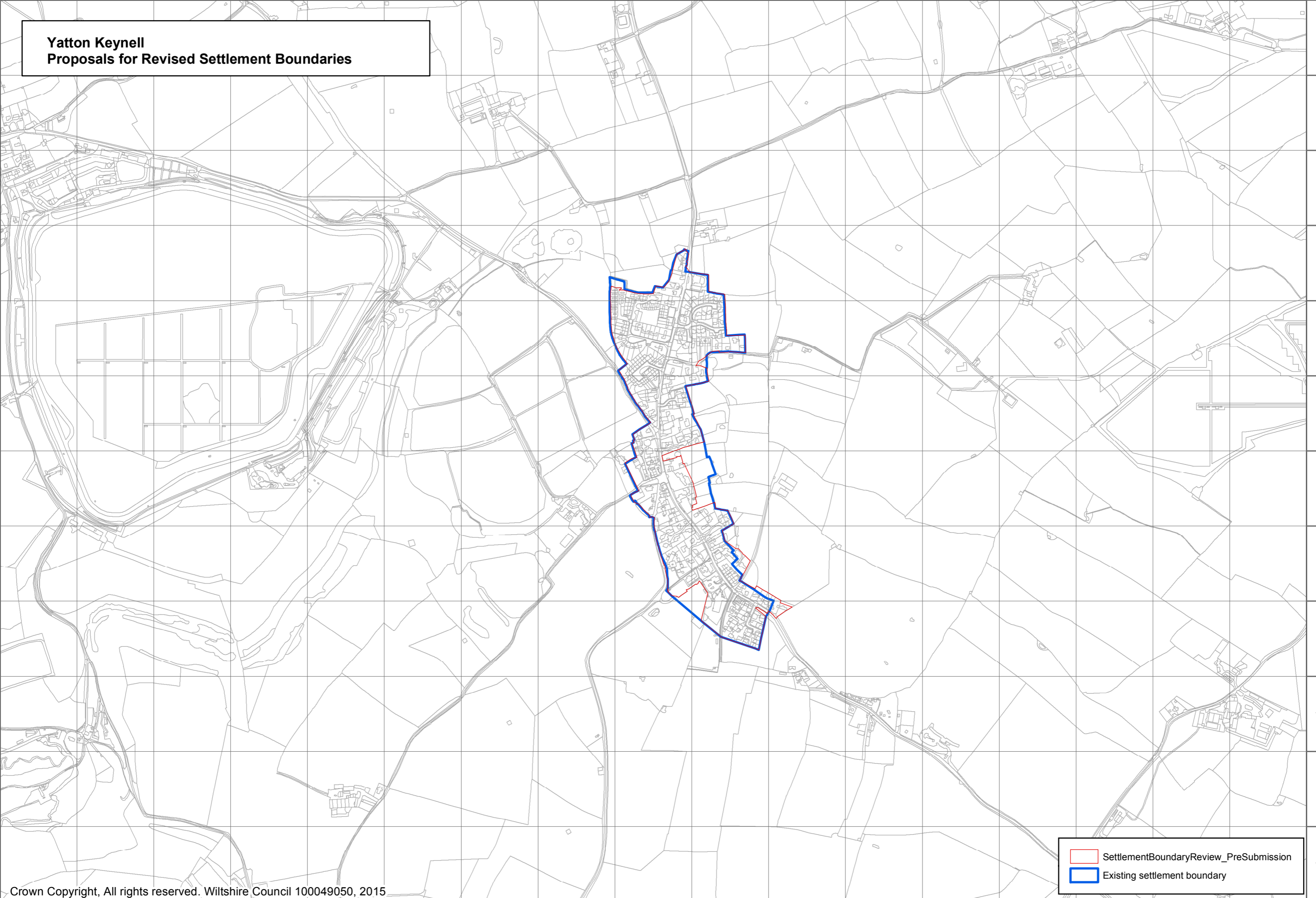
A B C D E F G H I J K L M N O P Q



A B C D E F G H I J K L M N O P Q

1  
2  
3  
4  
5  
6  
7  
8  
9  
10  
11  
12

**Yatton Keynell  
Proposals for Revised Settlement Boundaries**

1  
2  
3  
4  
5  
6  
7  
8  
9  
10  
11  
12



|                                                                                       |                                        |
|---------------------------------------------------------------------------------------|----------------------------------------|
|  | SettlementBoundaryReview_PreSubmission |
|  | Existing settlement boundary           |

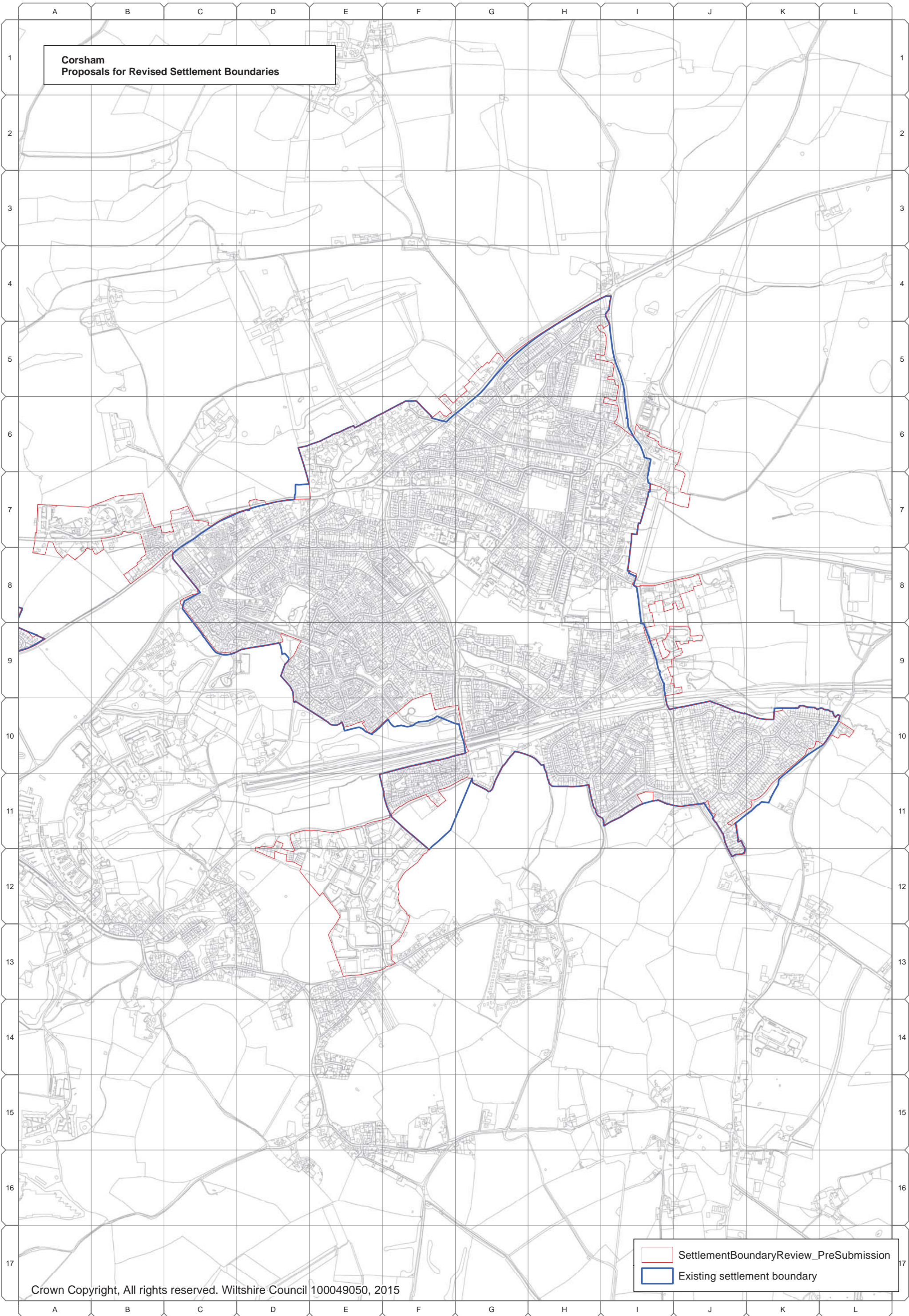
A B C D E F G H I J K L M N O P Q

## Corsham Community Area

**A.41** The following settlement boundaries in the Corsham Community Area have been reviewed by the Wiltshire Housing Site Allocations Plan:

- Corsham
- Box
- Colerne, and
- Rudloe

**Corsham  
Proposals for Revised Settlement Boundaries**

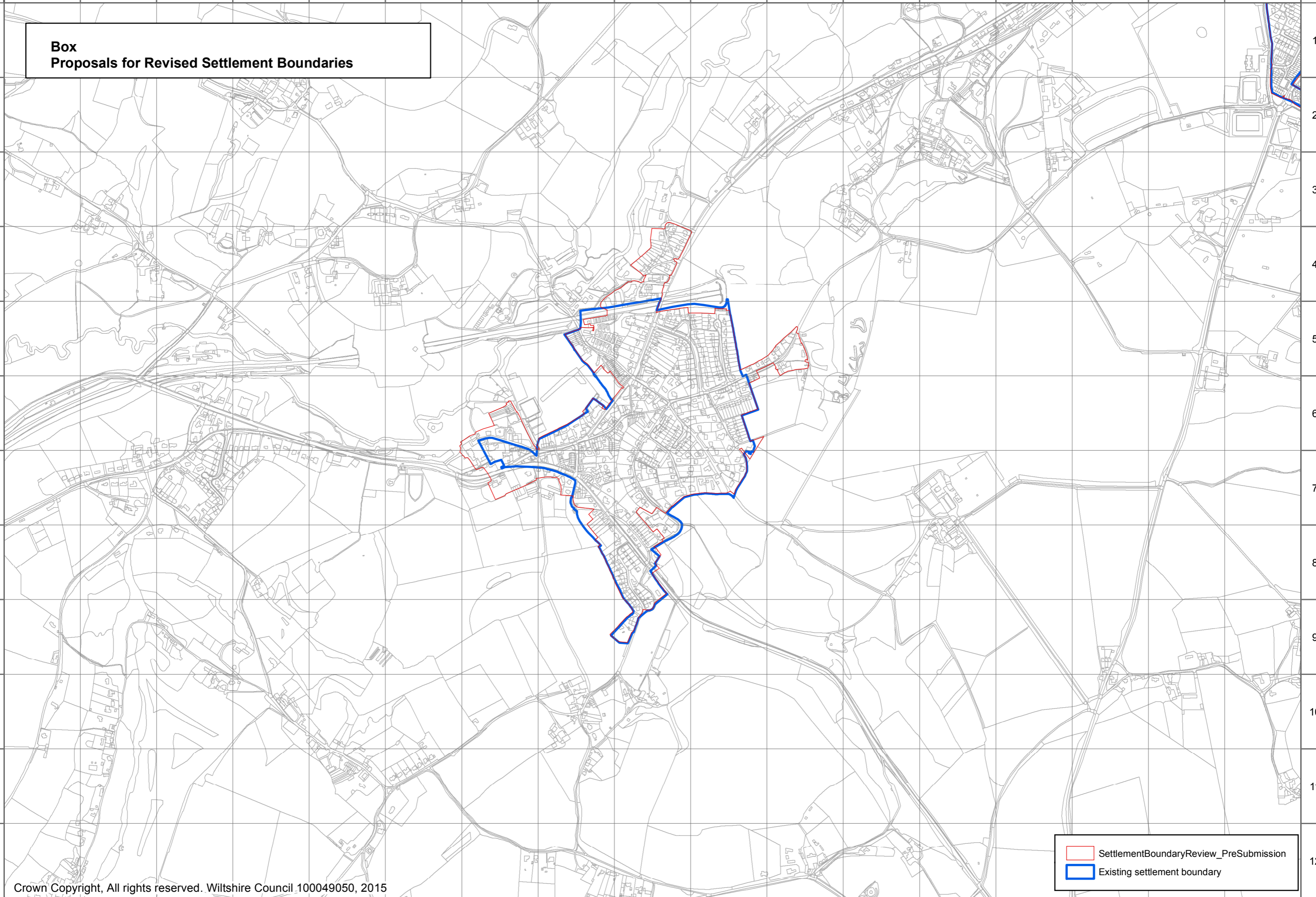


SettlementBoundaryReview\_PreSubmission  
Existing settlement boundary

A B C D E F G H I J K L M N O P Q

1  
2  
3  
4  
5  
6  
7  
8  
9  
10  
11  
12

**Box  
Proposals for Revised Settlement Boundaries**



SettlementBoundaryReview\_PreSubmission  
Existing settlement boundary

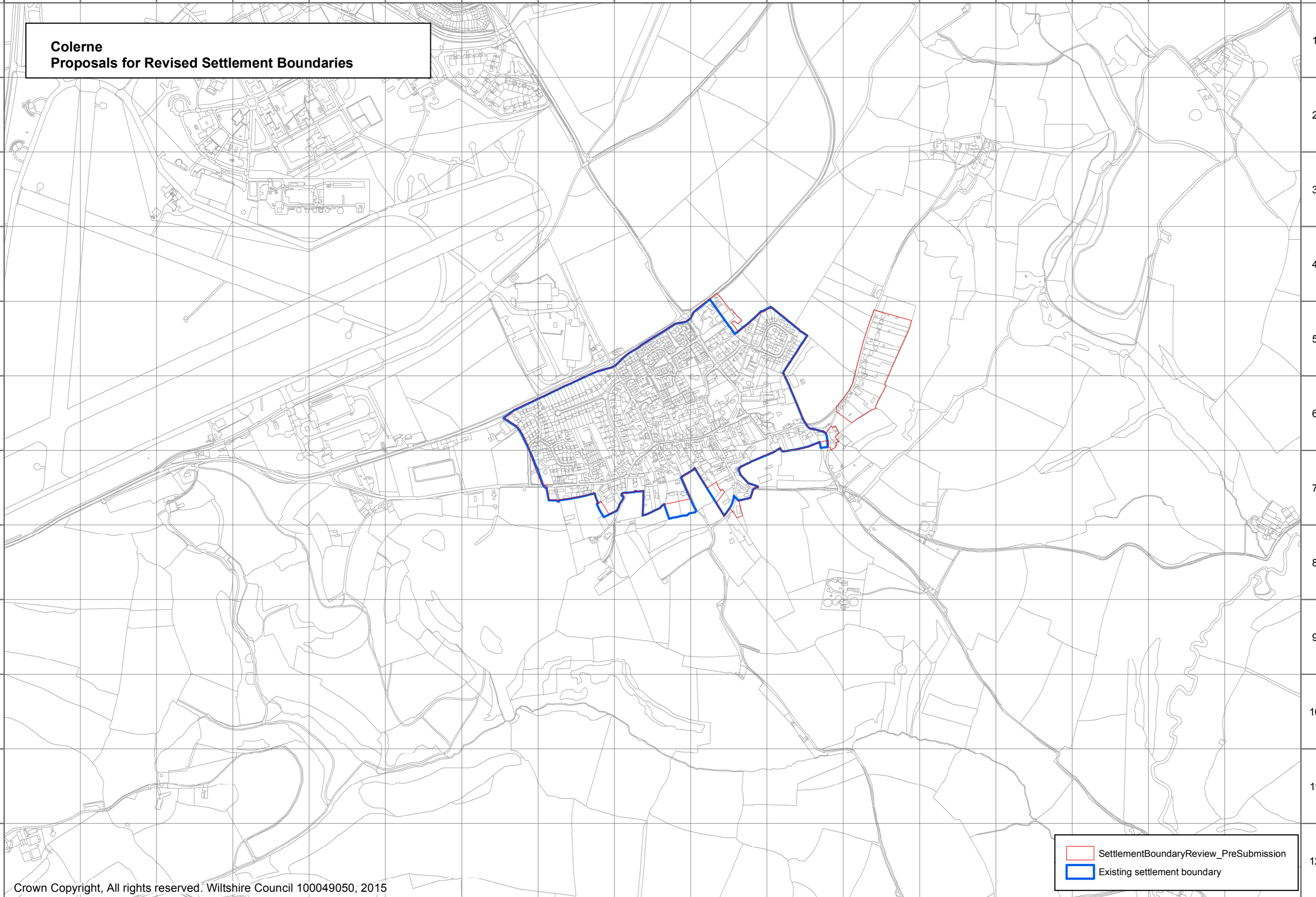
A B C D E F G H I J K L M N O P Q

A B C D E F G H I J K L M N O P Q

1  
2  
3  
4  
5  
6  
7  
8  
9  
10  
11  
12

**Colerne  
Proposals for Revised Settlement Boundaries**

1  
2  
3  
4  
5  
6  
7  
8  
9  
10  
11  
12

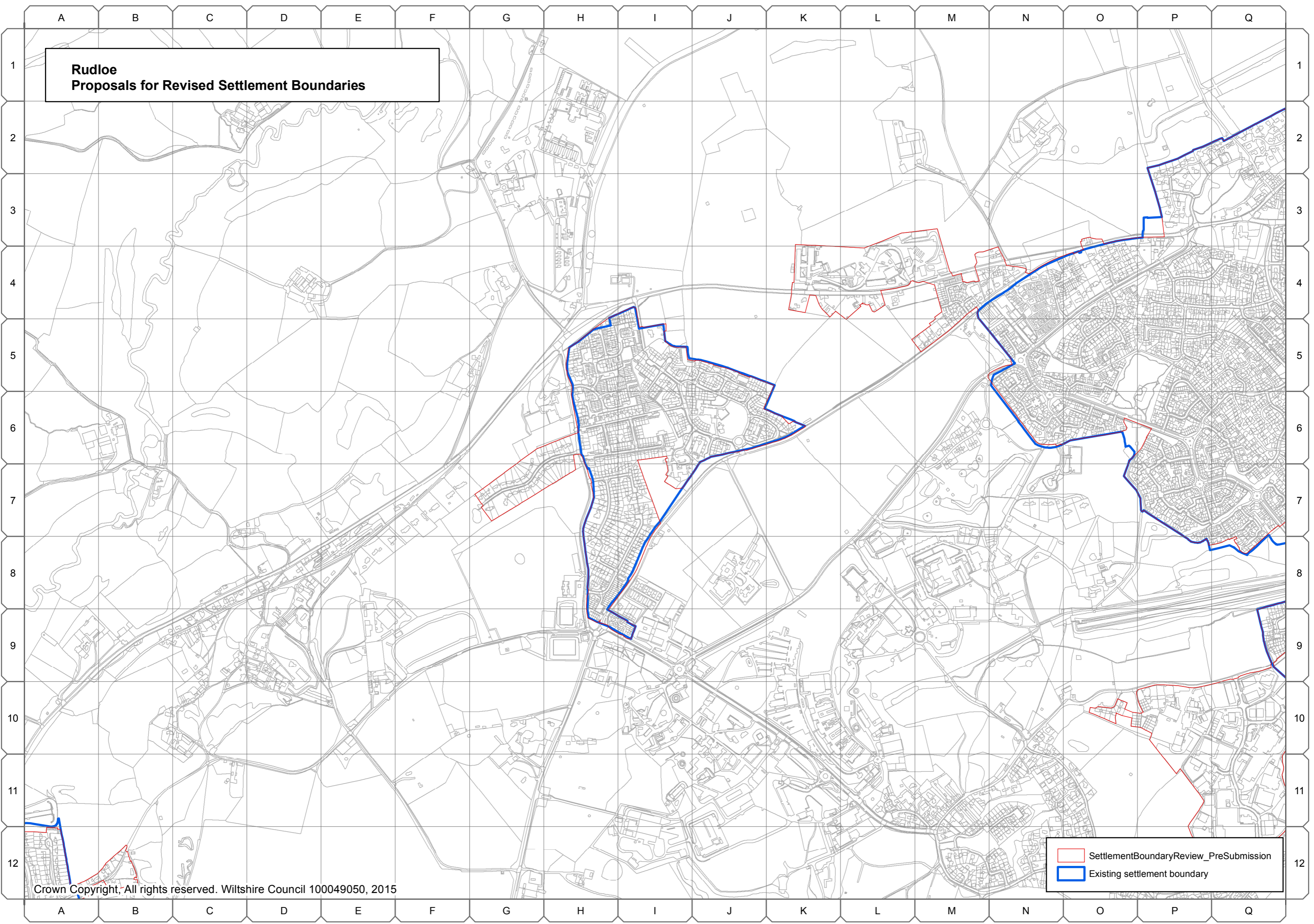




SettlementBoundaryReview\_PreSubmission  
Existing settlement boundary

A B C D E F G H I J K L M N O P Q



**Rudloe  
Proposals for Revised Settlement Boundaries**



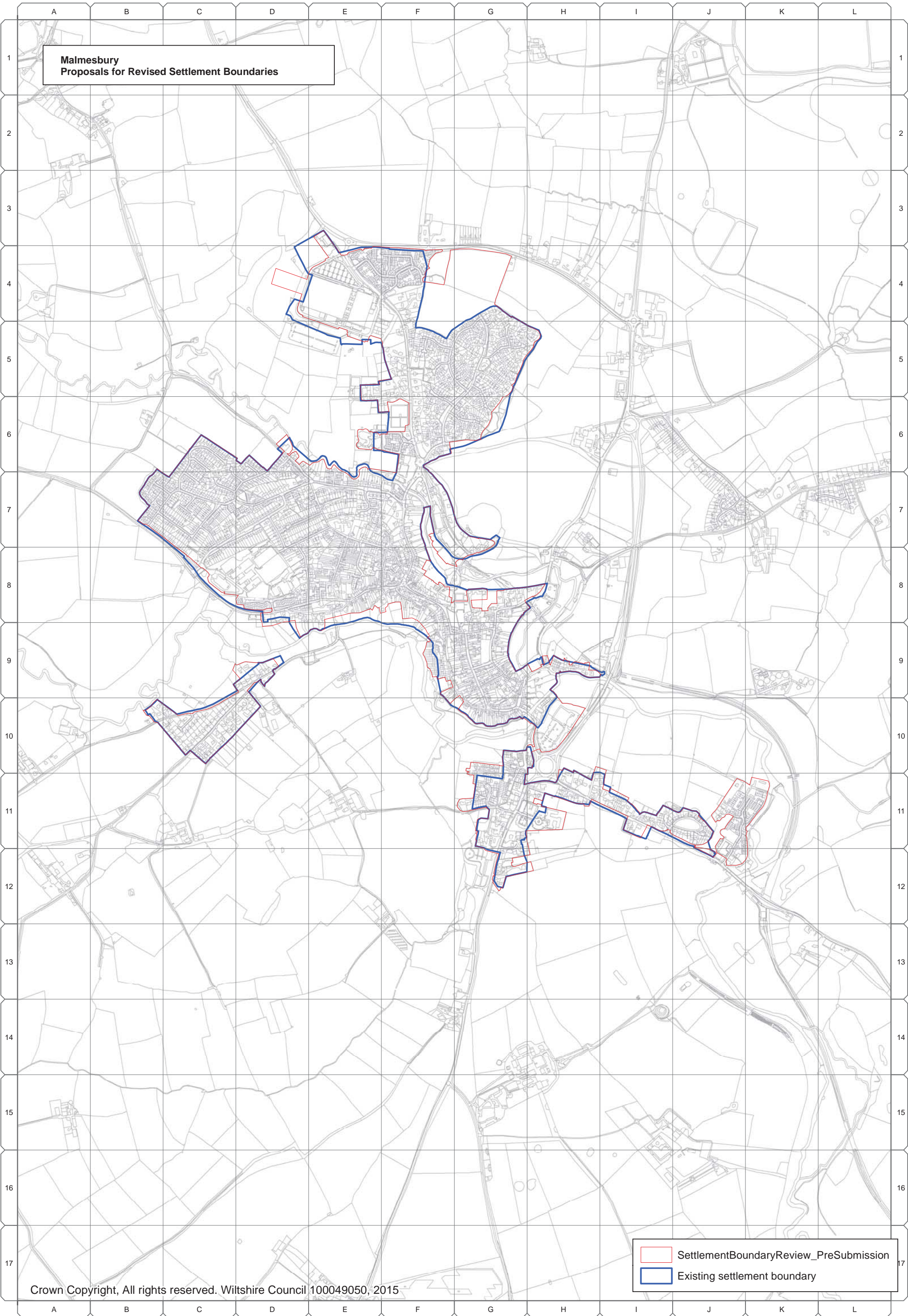
|                                                                                       |                                        |
|---------------------------------------------------------------------------------------|----------------------------------------|
|  | SettlementBoundaryReview_PreSubmission |
|  | Existing settlement boundary           |

## Malmesbury Community Area

**A.46** The following settlement boundaries in the Malmesbury Community Area have been reviewed by the Wiltshire Housing Site Allocations Plan:

- Malmesbury
- Ashton Keynes
- Crudwell
- Oaksey, and
- Sherston

**A.47** The settlement boundary for Great Somerford has not been reviewed because of a neighbourhood plan.



**Malmesbury  
Proposals for Revised Settlement Boundaries**

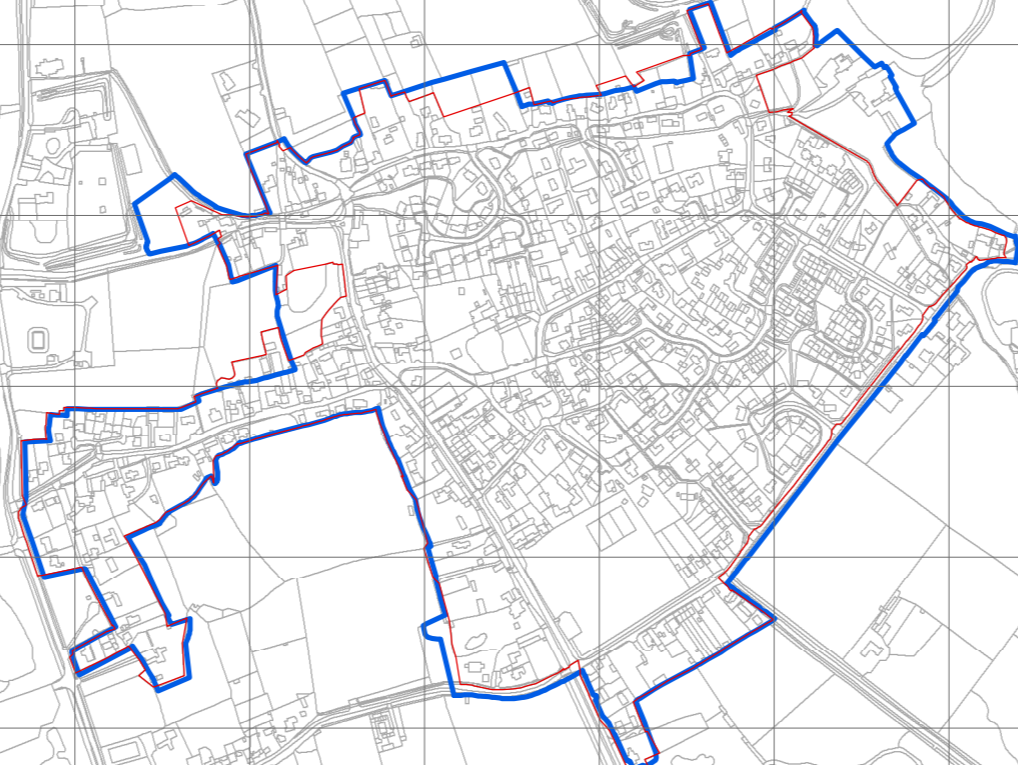
- SettlementBoundaryReview\_PreSubmission
- Existing settlement boundary

A B C D E F G H I J K L M N O P Q

1  
2  
3  
4  
5  
6  
7  
8  
9  
10  
11  
12

**Ashton Keynes  
Proposals for Revised Settlement Boundaries**

1  
2  
3  
4  
5  
6  
7  
8  
9  
10  
11  
12



SettlementBoundaryReview\_PreSubmission  
Existing settlement boundary

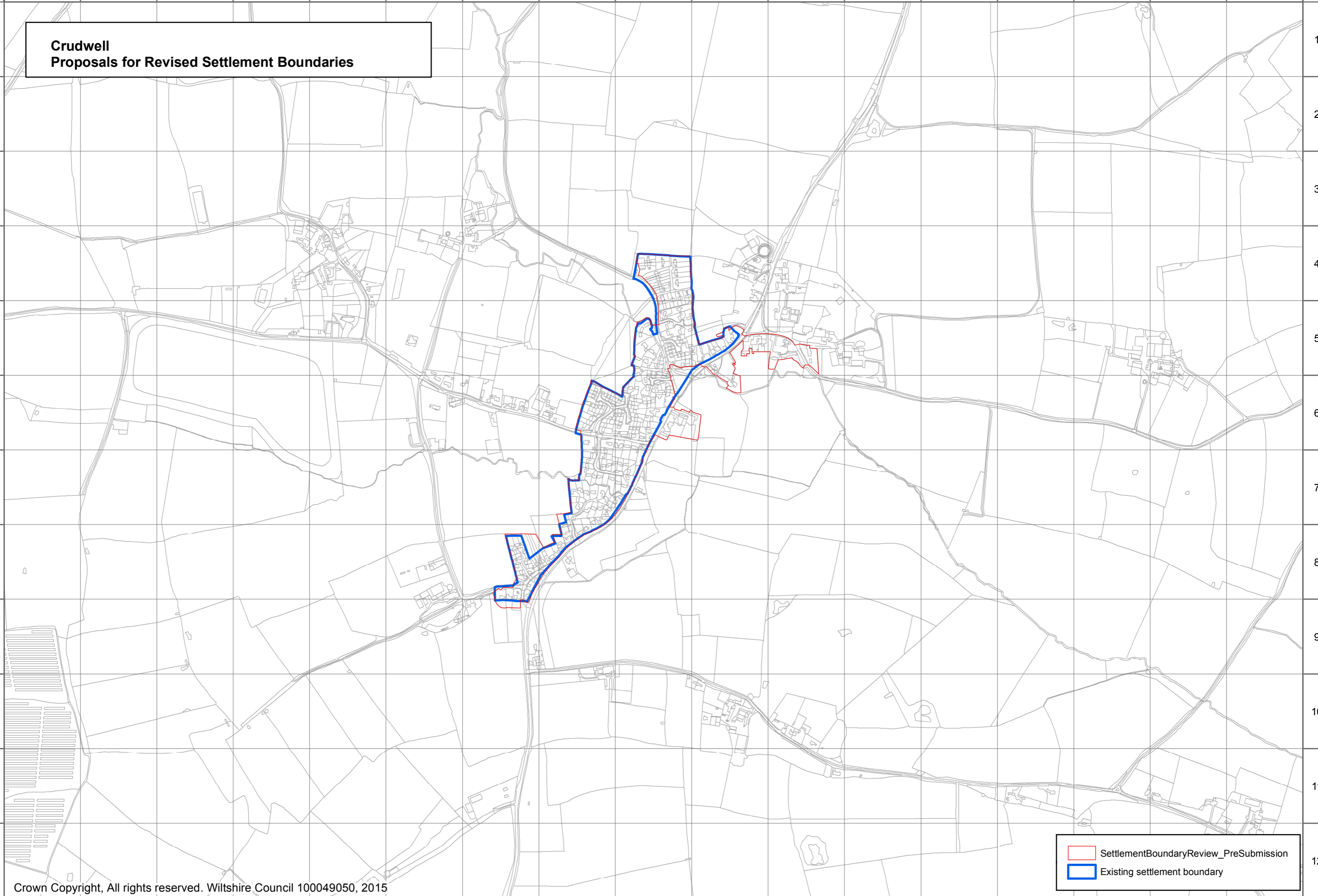
A B C D E F G H I J K L M N O P Q

A B C D E F G H I J K L M N O P Q

1  
2  
3  
4  
5  
6  
7  
8  
9  
10  
11  
12

**Crudwell  
Proposals for Revised Settlement Boundaries**

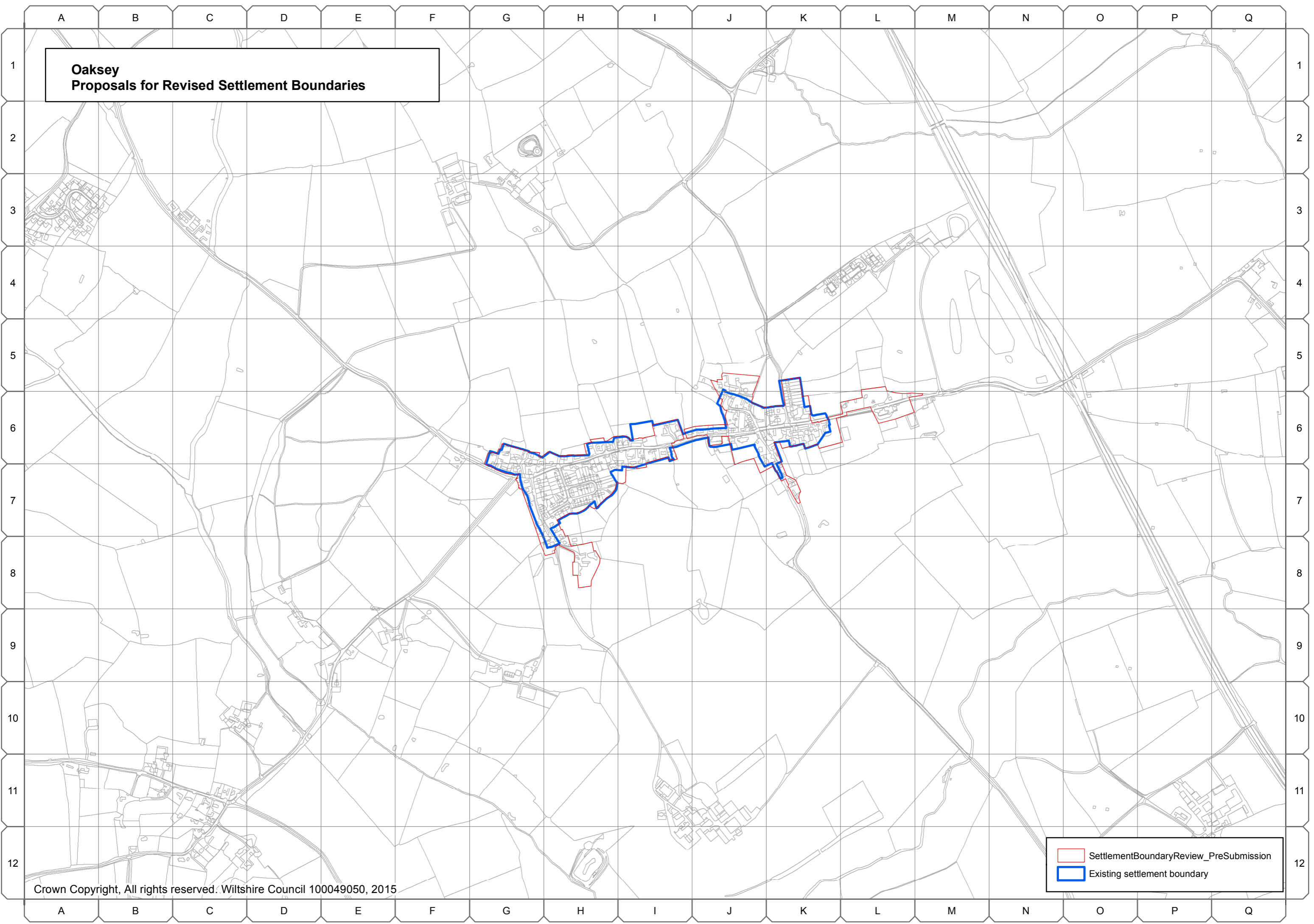
1  
2  
3  
4  
5  
6  
7  
8  
9  
10  
11  
12



SettlementBoundaryReview\_PreSubmission  
Existing settlement boundary

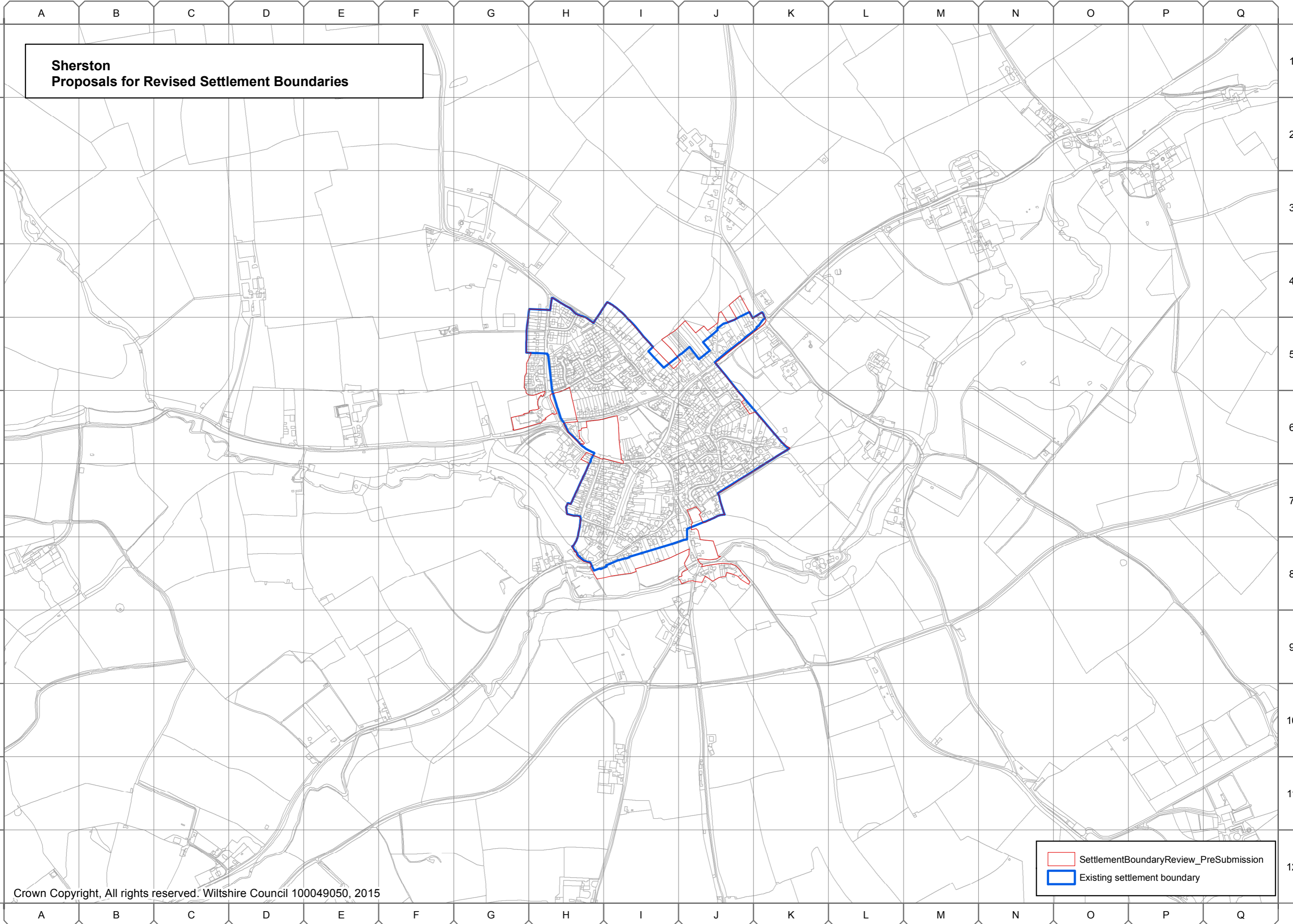
A B C D E F G H I J K L M N O P Q

**Oaksey  
Proposals for Revised Settlement Boundaries**



SettlementBoundaryReview\_PreSubmission  
Existing settlement boundary

**Sherston  
Proposals for Revised Settlement Boundaries**



SettlementBoundaryReview\_PreSubmission  
Existing settlement boundary