

Wiltshire Council Community Governance Review 2019-2020

Scheme 40: Derry Hill and Studley

(This reasoning for this scheme is as provided by the lead petitioner of a petition requesting creation of a new parish)

[CGR Terms of Reference](#)

[CGR Guidance](#)

Proposal

To establish a new parish at Derry Hill and Studley with no wards and 9 councillors, on the boundaries of the existing west and pewsham wards of calne without.

Wiltshire Council Note: to consider whether to request that the LGBCE adjust the boundaries of the unitary Divisions if appropriate

Reason

[Reasoning provided by Lead Petitioner](#)

Electorate of Calne Without Parish 1 Oct 2019 – 2290

Electorate of Calne Without Parish 2024 (Projected) - 2787

Electorate of Proposed Parish of Derry Hill and Studley 1 October 2019 – 1214

Electorate of Proposed Parish of Derry Hill and Studley 2024 (projected)¹ – 1316

Electorate of remainder of Calne Without Parish 1 Oct 2019 - 1076

Electorate of remainder of Calne Without Parish 2024 (projected) - 1471

Council Tax by Parish, including Police and Fire Precepts

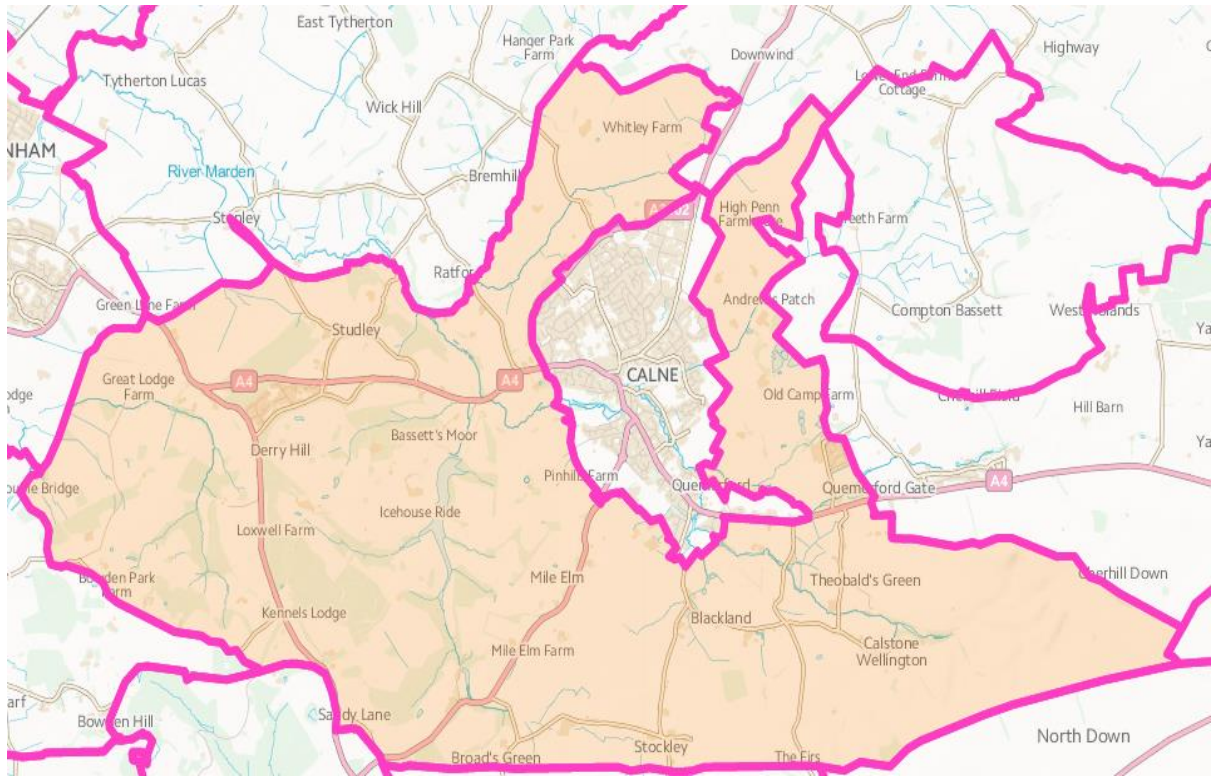
This data is provided for information, however please note that Community Governance Reviews cannot use the level of precept in affected areas as justification to approve or disapprove of a scheme.

Council Tax Schedule 2019/2020 (monthly)	Band A (£)	Band B (£)	Band C (£)	Band D (£)	Band E (£)	Band F (£)	Band G (£)	Band H (£)
Calne Without Parish Council	11.98	13.98	15.97	17.97	21.96	25.96	29.95	35.94

¹ As part of the 2018/19 Electoral Review of Wiltshire Council electorate projections taking into account population growth and projected development up to 2024 were produced, and updated in September 2018. These figures, used by the LGBCE, have been utilised for the Community Governance Review.

Map of Area

Map of Calne Without Parish



Map of proposed Parish of Derry Hill and Studley

