

Wiltshire Council Community Governance Review 2019-2020

Information Sheet

Scheme 51: West Ashton 1

[CGR Terms of Reference](#)

[CGR Guidance](#)

Proposal

The land formally known as the “Land West of Biss Farm”, which has been subject to planning permissions since 1999, to be transferred from Trowbridge Town to West Ashton Parish.

Wiltshire Council additional: To consider whether to request that the LGBCE adjust the boundaries of the Unitary Divisions to make them coterminous with the town boundary, should the above change be approved

Reason

[Reasoning from West Ashton Parish Council, the proposer](#)

Electorate of Trowbridge Town Parish 1 Oct 2019 - 26717

Electorate of West Ashton Parish 1 Oct 2019 - 361

Electorate of Area 2 1 Oct 2019 – 0

Electorate of Area 2 2024 (projected)¹ – 0

Council Tax by Parish, including Police and Fire Precepts

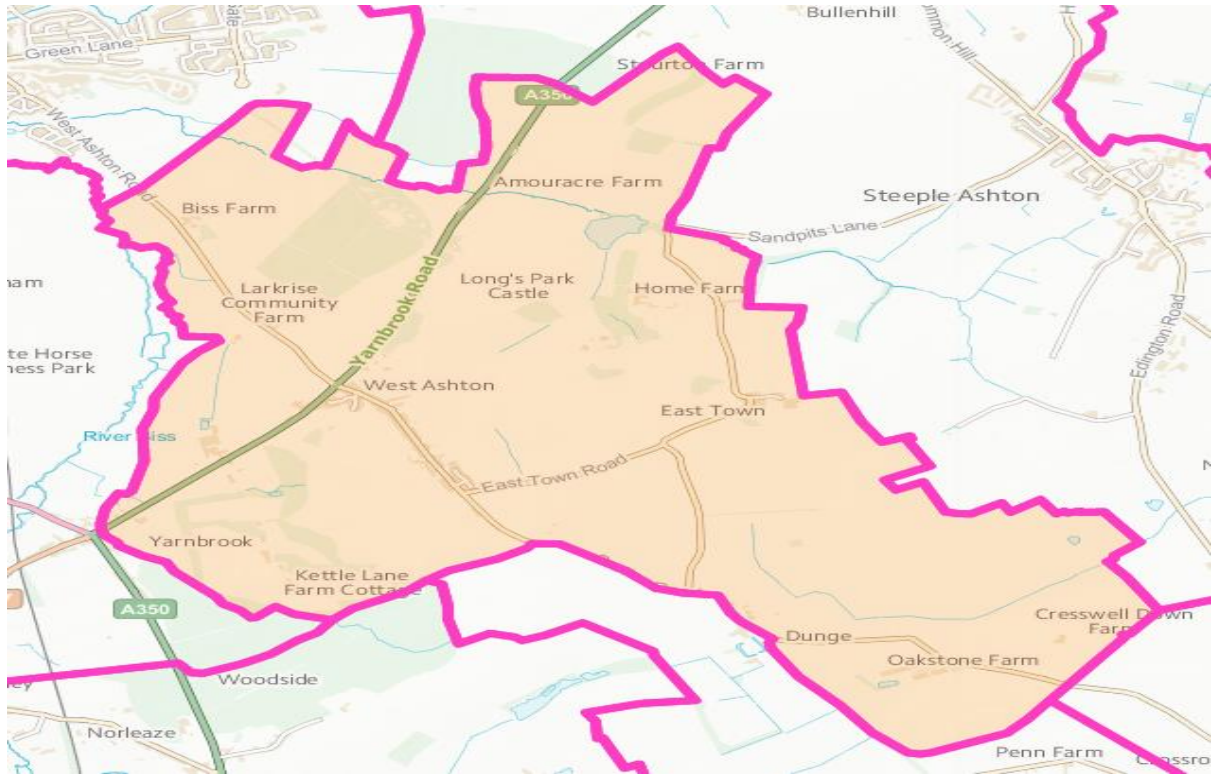
This data is provided for information, however please note that Community Governance Reviews cannot use the level of precept in affected areas as justification to approve or disapprove of a scheme.

Council Tax Schedule 2019/2020 (monthly)	Band A (£)	Band B (£)	Band C (£)	Band D (£)	Band E (£)	Band F (£)	Band G (£)	Band H (£)
West Ashton Parish Council	20.66	24.10	27.55	30.99	37.88	44.76	51.65	61.98
Trowbridge Town Council	102.65	119.76	136.87	153.98	188.20	222.42	256.63	307.96

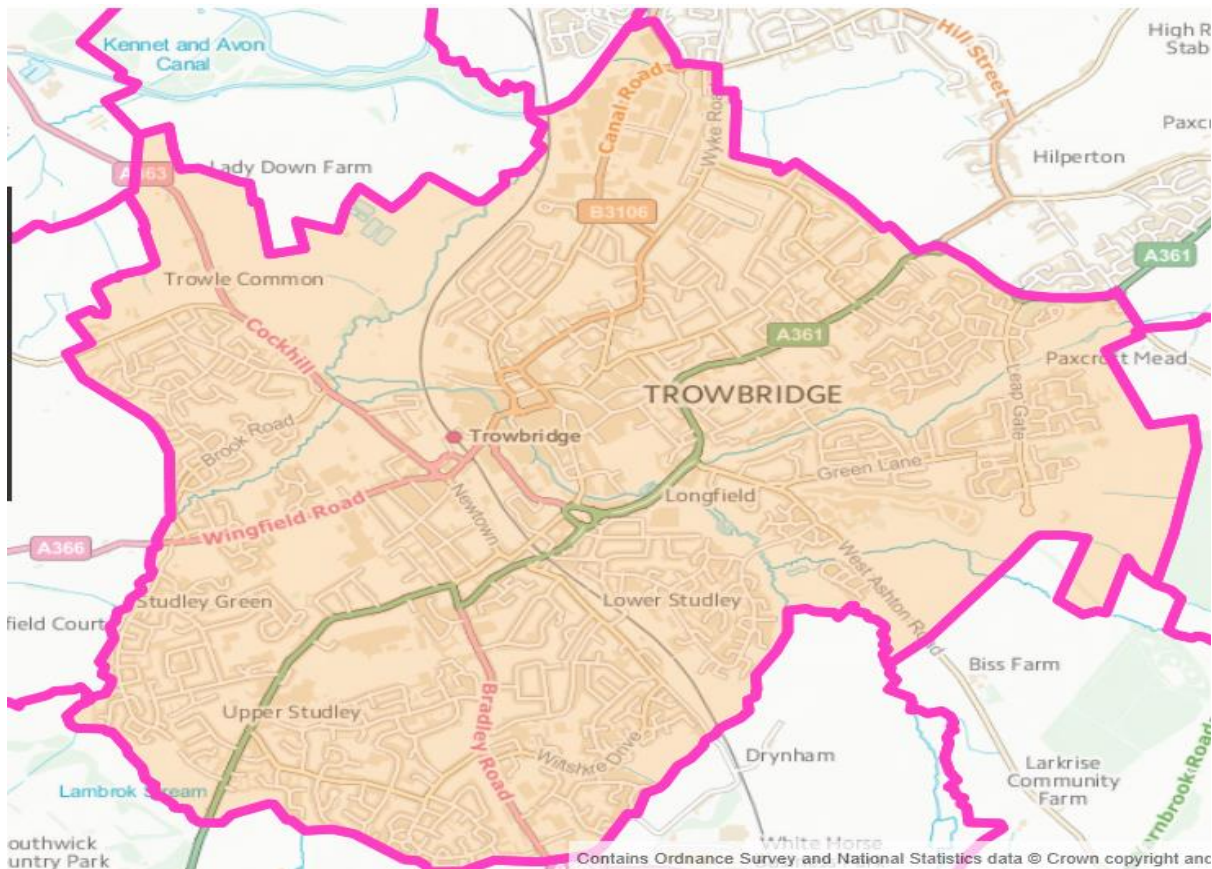
¹ As part of the 2018/19 Electoral Review of Wiltshire Council electorate projections taking into account population growth and projected development up to 2024 were produced, and updated in September 2018. These figures, used by the LGBCE, have been utilised for the Community Governance Review.

Map of Area

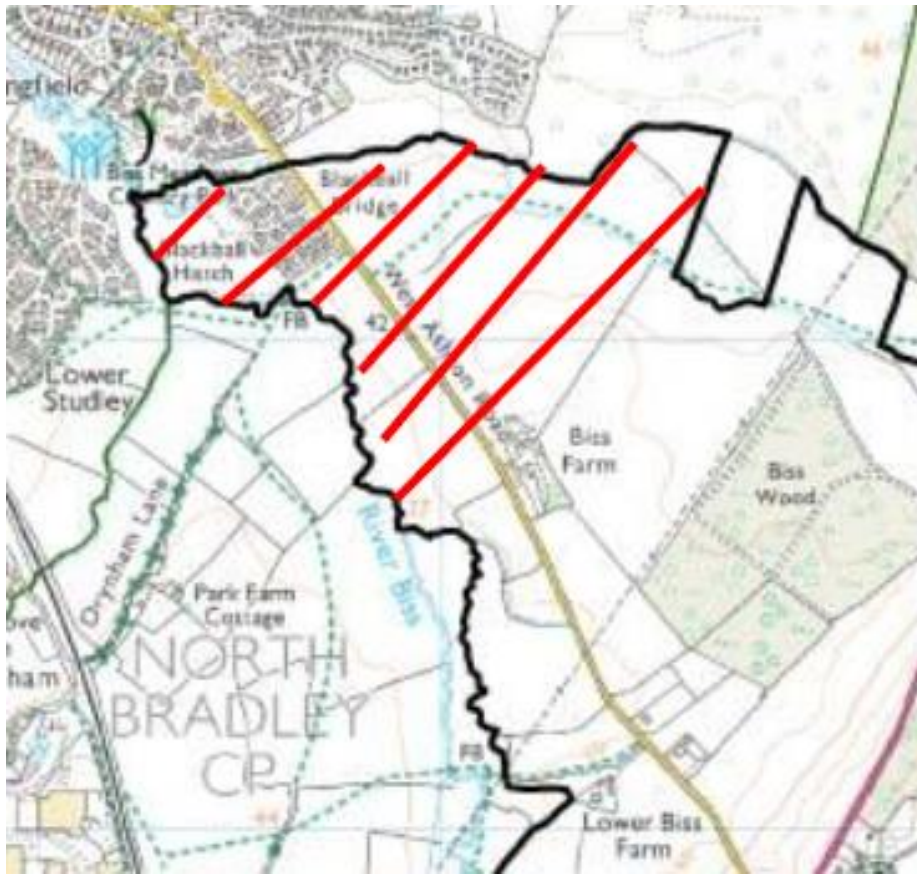
Map of West Ashton Parish



Map of Trowbridge Parish



Map of West Ashton Proposal – Schemes 51 and 52



Scheme 51

