

# Wiltshire Council Community Governance Review 2019-2020

## Information Sheet

### Scheme 52: West Ashton 2

---

[CGR Terms of Reference](#)

[CGR Guidance](#)

#### Proposal

Old Farm estate, the former site of Larkrise Farm to be transferred from Trowbridge Town to West Ashton Parish. The farm will be adjacent to the re-routed A350 in the parish.

#### Reason

[Reasoning of West Ashton Parish Council, the proposer](#)

**Electorate of Trowbridge Town Parish 1 Oct 2019 - 26717**

**Electorate of West Ashton Parish 1 Oct 2019 - 361**

**Electorate of Old Farm estate 2018 – 175**

**Electorate of Old Farm estate 2024 (projected)<sup>1</sup> –182**

#### Council Tax by Parish, including Police and Fire Precepts

*This data is provided for information, however please note that Community Governance Reviews cannot use the level of precept in affected areas as justification to approve or disapprove of a scheme.*

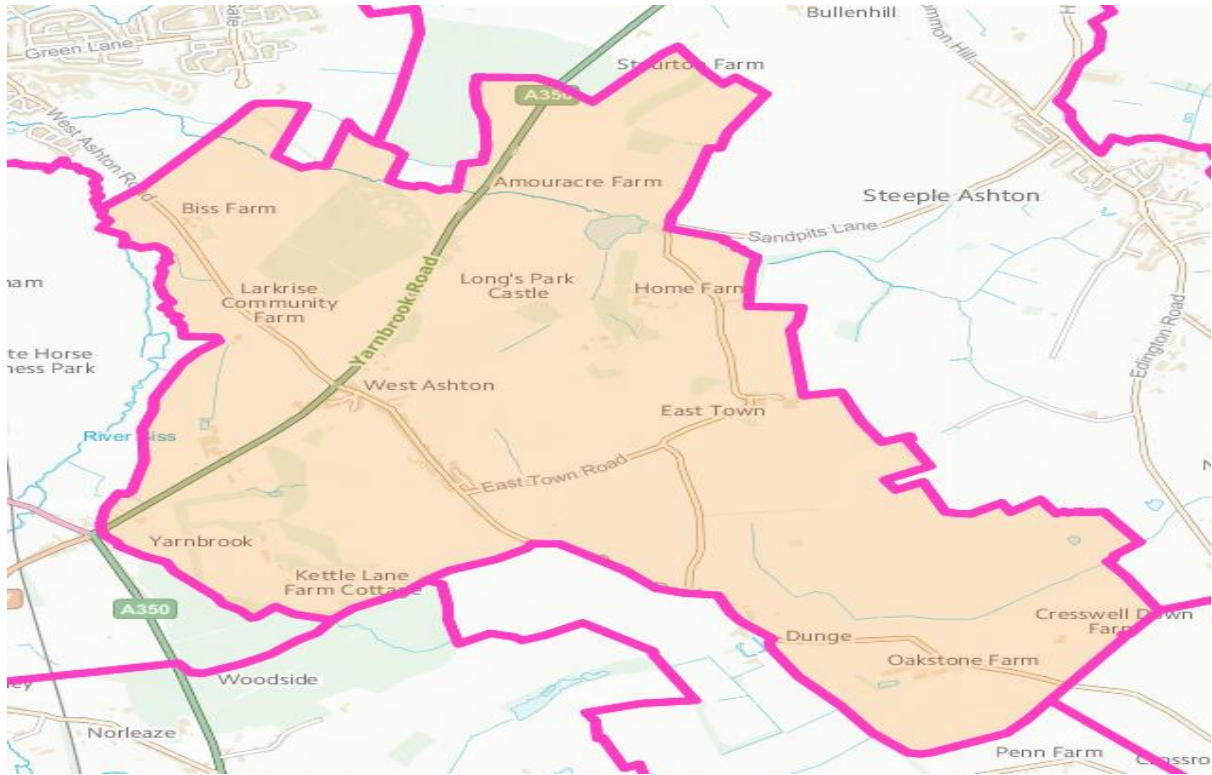
Council Tax Schedule 2019/2020 (monthly)	Band A (£)	Band B (£)	Band C (£)	Band D (£)	Band E (£)	Band F (£)	Band G (£)	Band H (£)
West Ashton Parish Council	20.66	24.10	27.55	30.99	37.88	44.76	51.65	61.98
Trowbridge Town Council	102.65	119.76	136.87	153.98	188.20	222.42	256.63	307.96

---

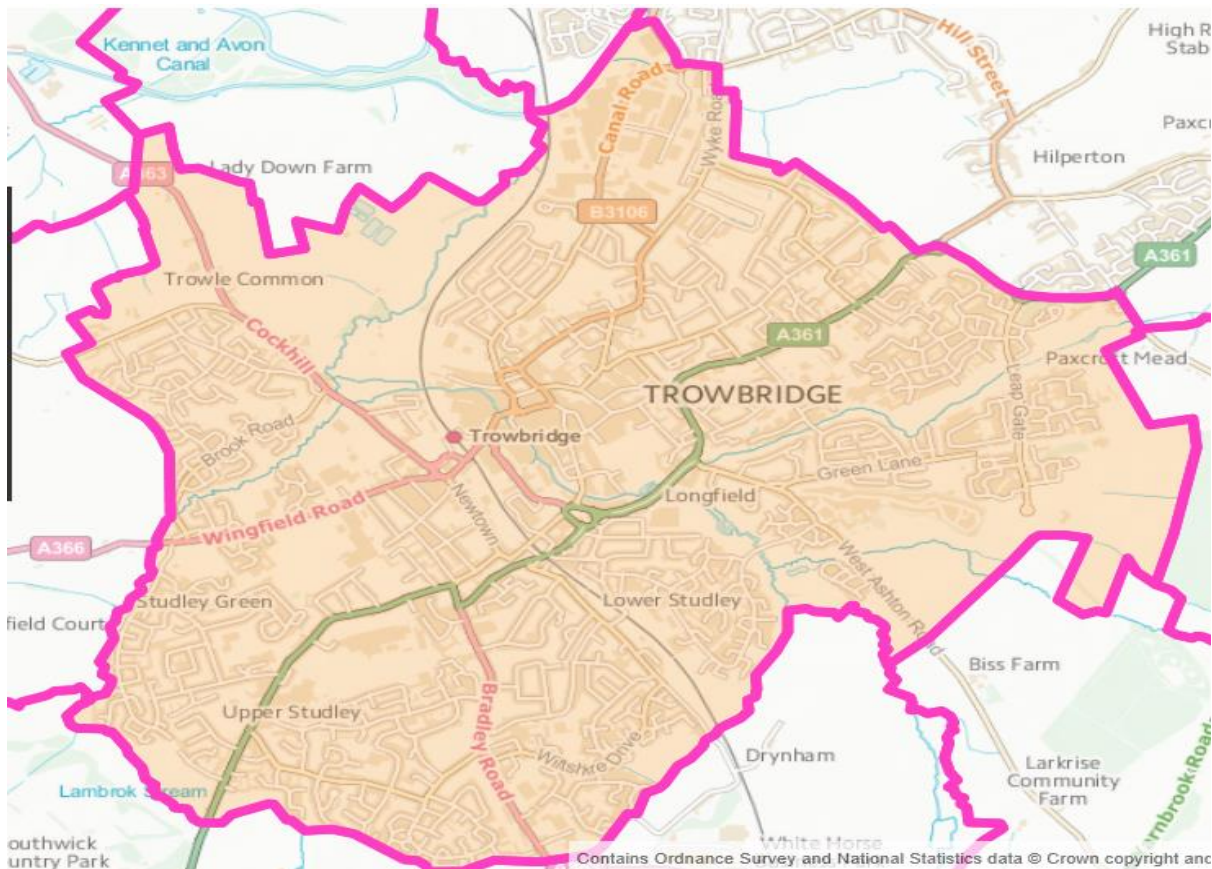
<sup>1</sup> As part of the 2018/19 Electoral Review of Wiltshire Council electorate projections taking into account population growth and projected development up to 2024 were produced, and updated in September 2018. These figures, used by the LGBCE, have been utilised for the Community Governance Review.

## Map of Area

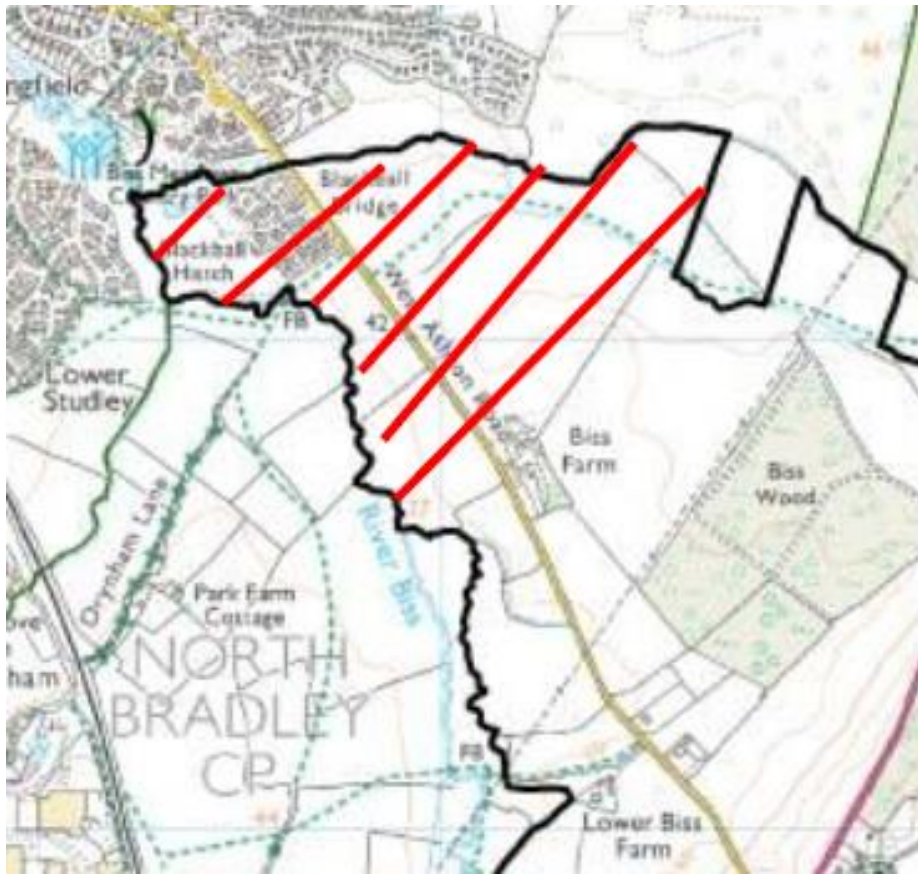
### Map of West Ashton Parish



### Map of Trowbridge Parish



Map of West Ashton Proposal – Schemes 51 and 52



Scheme 52

