

## APPENDIX D

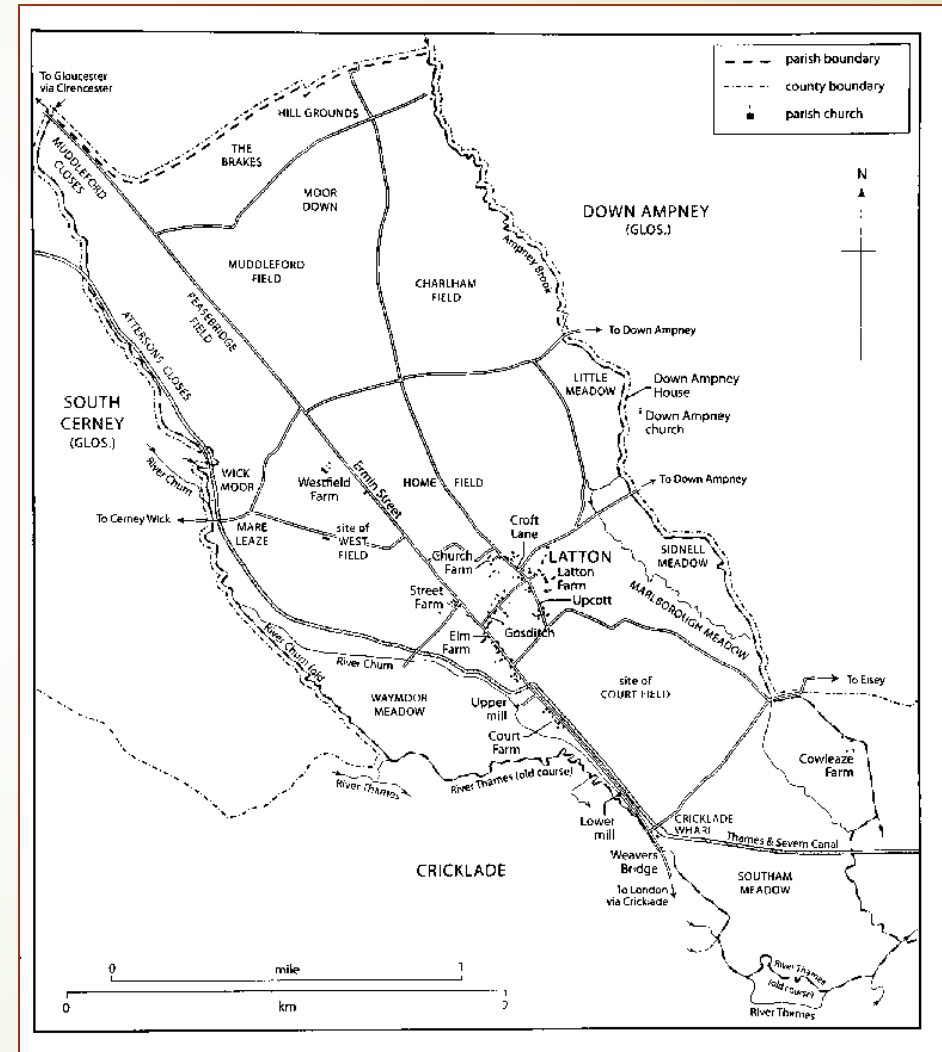
# LATTON PARISH COMMUNITY TRUST

Update



# Contents

- [Overview](#)
- [Plan / Phasing](#)
- [Structure / Cadence](#)
- [Charitable Trust](#)
- [Community Engagement](#)
- [Purpose / Uses](#)
- [Design](#)
- [Funding / Grants](#)
- [Run, Grow, Give](#)
- [Recent Work](#)
- [So Now What](#)
- [Appendices](#)



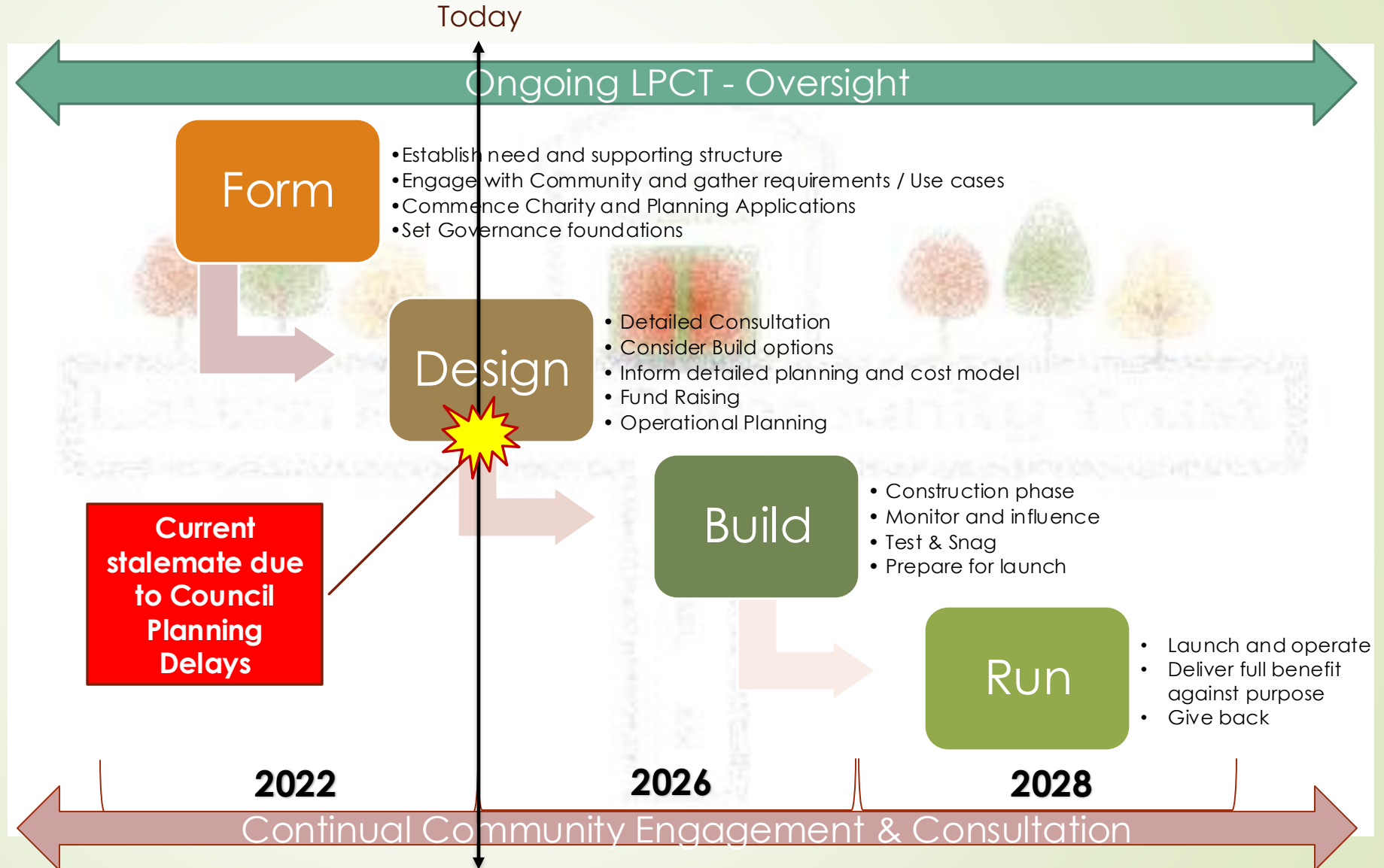
# Overview



- ▶ Latton is a village and civil parish in Wiltshire, England, 1.5 miles (2.4 km) north of Cricklade, on the county border with Gloucestershire. The village is bypassed by the A419 road from Swindon to Cirencester. The parish of Latton includes the hamlet of Eysey and Water Eaton. It has a population of c.469 electors registered, resident in around 238 properties and is increasing with c.12 new homes in the last 2-years and a further 6 in planning. If we were to account for all age groups, we are likely to be serving c.700 residents and growing.
- ▶ Over the last 12-years there have been numerous studies completed to determine the needs and shape the future of the Parish. This has been supported by an active and Community led Parish council. These studies have highlighted the need for a Community Hub, run by and for the Community.
- ▶ The recent Pandemic and current increase in the cost of living has put this need into the spotlight, energising demand from Parish residents for inclusive activities, events and interest in support of good causes. This has driven the need to create a Charitable Trust to enable strong foundations and a purposeful vehicle to deliver tangible benefits to the community and surrounding area.
- ▶ Concurrently, land has been offered as a donation to the Parish to put towards a New Village Hall, permission for which has reached conditional outline planning stage (see [Appendix 1](#)). A previous attempt to progress this opportunity stalled due to the Covid-19 pandemic.
- ▶ This document represents the efforts to combine and continue intent to form a Latton Parish Charitable Trust (LPCT) to exploit opportunities for community development, social cohesion and support.
- ▶ The progress of the Outline Planning application seems to have stalled with the the Wiltshire Council Planning Department, despite our understanding that conditions have or are being met by the applicant.

# Plan / Phasing

*A top-level plan dependant on achieving Charitable Status, New Village Hall – facilitating the needs of the community and becoming a vehicle for community cohesion*



# Committee Structure / cadence



We already have a vibrant Community with many dedicated Volunteers doing amazing things (examples pictured). The governance and structure of the Trust Committee aims to augment, support and sustain these efforts and the needs of the parish now and into the future

## ➤ 3 trustees (minimum):

- Ben Stevens (Chair)
- Emma Fletcher (Sec)
- Barry Branigan
- David Pembridge
- Andy Lawrence

## • Members:

- Barry Branigan (Treasurer)
- James Trudgian (Communications)
- Andy Lawrence (Design)
- David Pembridge (Planning)
- Marietta Crockford (Fund Raising)
- Brian Paxton (Community Research)



- Meeting cadence every month
- Quorum and Governance laid out in the [Constitution](#)
- Representation from the Latton Parish Council (Chairman)
- Regular updates to residents
- In setting up this Committee advice and guidance has been sought from numerous official sources available on request



# Charitable Trust



## ► Objects / Purpose:

To advance such charitable purposes (according to the law of England and Wales) as the trustees see fit from time to time in particular but not limited to advancing citizenship or community development.

To further or benefit the residents of Latton Parish and the neighbourhood, without distinction of sex, sexual orientation, race or of political, religious or other opinions by associating together the said residents and the local authorities, voluntary and other organisations in a common effort to advance education and to provide facilities in the interests of social welfare for recreation and leisure time occupation with the objective of improving the conditions of life for the residents.

In furtherance of these objects but not otherwise, the trustees shall have power:

To establish or secure the establishment of a village hall or community centre and to maintain or manage or co-operate with any statutory authority in the maintenance and management of such a centre for activities promoted by the charity in furtherance of the above objects.

In the process of delivering on these objects the Trust may need to own land, control substantial funds or enter into contracts. Therefore, the body will be run as a **Charitable Incorporated Organisation (CIO) and given its Community focus, adopt the 'association' model as it will have a wider membership, including voting members other than the charity trustees.**

The energy of willing volunteers has formed a cohesive committee and its collective effort, continued momentum and the opportunities being presented will not be fully exploited until we achieve charitable status

- Trustee declaration ([link](#))
- Constitution ([link](#))
- Application ([link](#))

# Community Engagement



- Latton has a vibrant community, and continual consultation is needed to ensure we cater for the Parish and remain open minded to its needs.
- An ongoing and effective way of communicating with the local community has already been established and will continue to evolve to ensure the Trust meets the ever-changing and diverse wishes of the community.
- This has and will continue to include:
  - [Latton Community FaceBook Group](#)
  - [Latton Parish Council Website](#)
  - Cricklade & Latton Chronical
  - Other local press (Swindon Advertiser)
  - Flyers to residents ([example](#))
  - Local events:
    - Open Evenings
    - Latton Café and other Events, etc.
  - Community surveys



# Purpose / Uses

8

Improving the conditions of life for residents...



## Sports / Leisure:

- Keep fit / Pilates classes
- Badminton / Paddle Tennis / Table Tennis
- Skittle Alley
- Pensioners morning exercise
- Youth soft football

## Clubs / Interest Groups

- Lunch club
- Dance / Music club
- Book exchange
- Bridge Club
- Cooking club
- Flower arranging
- Art / Crafts

## Environment:

- Recycling
- Local Canal Trust
- Archaeological Interest Groups
- Electric Car Charging?

## Charity / Good Causes

- Fund raising events
- Charity Events
- Trust / Charity meetings
- Food / Clothes Bank Collection
- Community Capacity projects

## Leisure Time Occupation

Education



Recreation

## Meetings, Lectures and Classes

## Welfare:

- Mental Health training
- Mother & Baby / Children clubs
- Treatment Room (Outreach)
- Drop-in Clinics (Dr, Physio, Vets?)

## Local Economy:

- Point of sale for local producers (garden plants, veg, eggs, etc.)
- Mobile Take away
- Pop Up - Village Shop / post office
- Business / Networking hub (Wi-Fi)
- Parish Council

## Social Cohesion / Inclusion:

- Quizzes / parties, coffee mornings, cake sales, pub evenings
- Disabled social afternoon exercise / activities
- Multi-faith groups / activities
- Latton Café and Committees
- Cinema / Race nights

'Something for everyone'

Representative ideas from Parish residents gathered through local engagement...



# Design

Dual Use

Regular  
Foot-fall



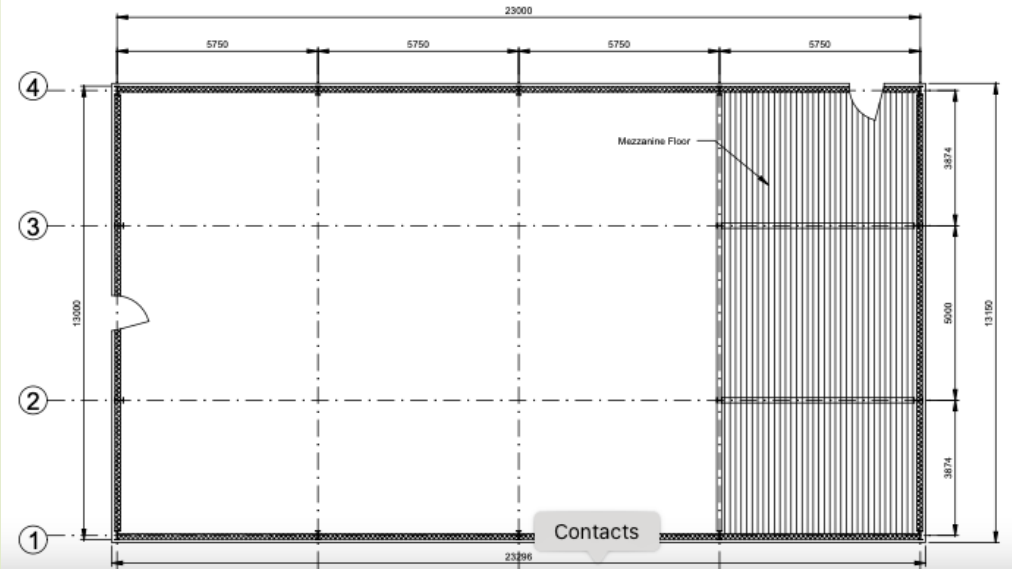
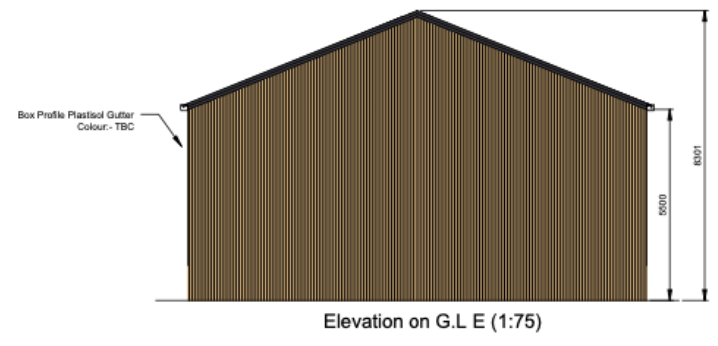
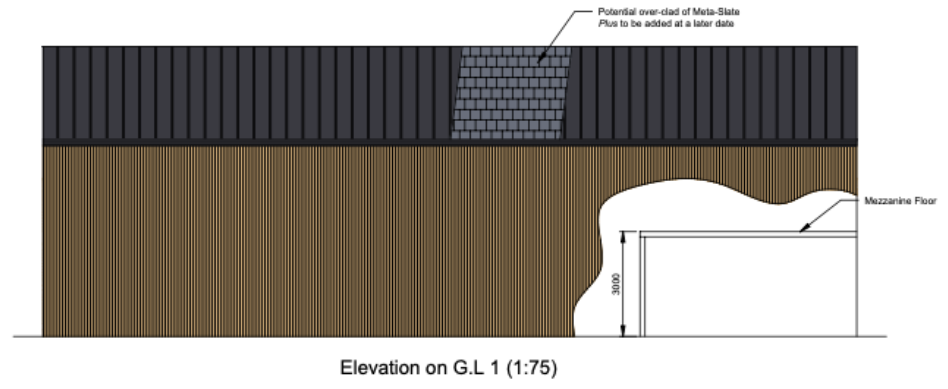
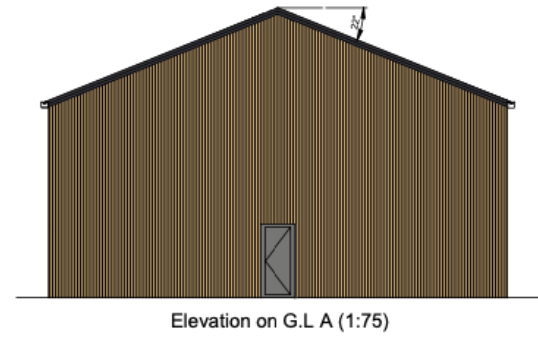
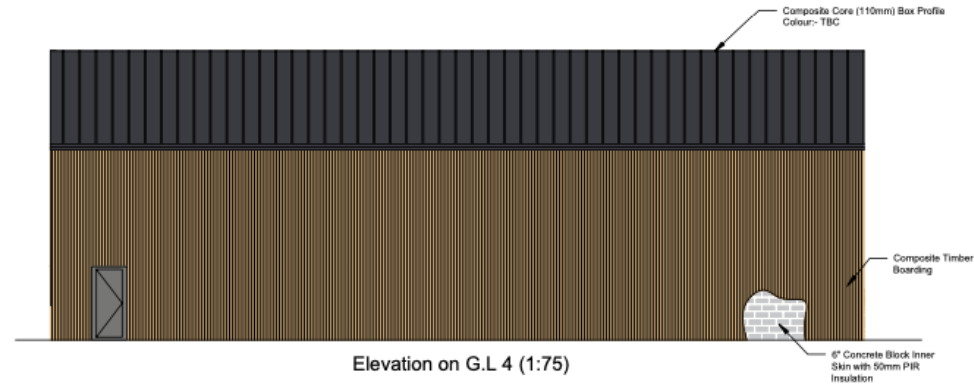
- ▶ From a design perspective numerous visits have been conducted to similar facilities to review:
  - ▶ How they look and are designed
  - ▶ What activities they support
  - ▶ How successful they are and how they are run
- ▶ We are also reviewing examples of modern structures that are representative of the potential construction methods and materials
- ▶ Clearly, we will need to strike a balance between the aspirations of the community and what is realistically sustainable and affordable
- ▶ Our Plans will also need to be phased to secure some funding so the function of the facility may have to iterate or evolve
- ▶ Safety, security, sustainability and supportability will also be key factors driving this

Shop

Creche

Cafe

HQ!



For illustrative purposes only



For  
illustrative  
purposes  
only

# Funding / grants



*Our research has suggested numerous of sources of funding. All will be approached to support the Trust on a one-off donation or ongoing grant basis:*

- Crowdfunding
- Community First
- Latton Parish Council / CIL
- Arnold Clark
- Solve community fund
- Mid Counties Co-operative Grants
- National lottery community fund
- Hills Landfill Trust
- Crapper and Sons Landfill Trust
- National Emergencies Trust Local Action fund
- Central Southern England Fund
- 113 Events (and other local event organisers)
- Community ownership fund
- Platinum Jubilee Fund
- Garfield Western foundation
- FCC Community Action Fund
- Small Grants Scheme – foylefoundation.org.uk
- Waylands
- Cullimore
- Tarmac
- Amazon Smile
- Local Community Groups
- Other Local Businesses / Employers
- Our own Fundraising Events

- *List is not exhaustive*
- *Funding / requests will be phased to align with spend profile*
- *Any donation will be tracked and recorded enabling full audit*
- *This also allows us donor contact and transparency should circumstance change*

# Run, Grow, Give



- Aspects of how the facility will be run, develop and give back to the community will continue to mature through the early stages of the facility planning / constructions. Outline arrangements include:

- Opening Hours:** The facility will be made available daily from 8:00am to 10:30pm. Requests can be made outside of these parameters by exception and will be considered by the trust on their own merit (i.e. Polling Station / Emergency shelter, etc.)
- Access:** The facility will only be opened as required / on demand via a network of responsible key holders through a central booking process and with organisational oversight. Physical or Policy Restrictions maybe put in place to Kitchen or storage facilities, depending on each situation. This would be quite normal to safeguard property, hygiene standards, for Health & Safety reasons and general protection of users. Hall access arrangements will include the need for hand over and acknowledgement of related policies by the user, including what to do in the event of an emergency
- Who benefits / Prioritisation:** The Facility is run as a charitable cause, so there will always be consideration to those less fortunate to enable some sort of support and/or access. It is the intention to make the community centre available for all and therefore the price will be determined accordingly to ensure equality of access. For this reason, the principle of 'Charity first' will be applied where there are booking contentions.
- Private Parties / Commercial use:** policies will be developed to ensure that these events are controlled and, in the parameters, and spirit of both the Trust Governance and community guidelines / wishes. For example; the 'sale' of alcohol is forbidden within the parish due to local by-laws/conditions.
- Hire Rates:** It is anticipated that a nominal rate to cover costs will be charged to community users with a commercial rate being charged for commercial hirers. They are not set in stone, subject to regular review and situation dependent.

Proposed Hire Rates	Charity / Non-Profit	Private	Commercial
1 Hour Hire	£15	£20	£30
Half Day AM/PM/Evening Hire	£45	£60	£90
Full Day Hire	£75	£95	£160



# Appendices

14

1. The Facility

# 1. The Facility

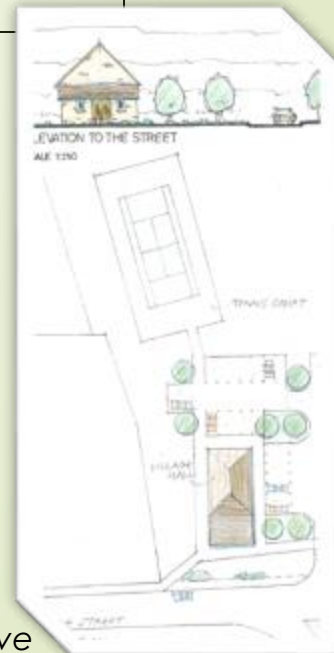


## Existing Facilities:

- There are no existing and suitable facilities owned by and for the sole benefit of the village
- An existing building being used as a village hall was once the village school and is owned by The church. It is a listed building and in a significant state of dilapidation, does not meet the increasing needs of a growing parish.
- The building is not suitable for many of the uses the village have put forward and, in any case, would need complex and costly renovation to bring to safe and modern standards, estimated to be of greater cost than a new build
- The village buying the facility from the Church is not an affordable option and any proceeds from the sale would in any case go to the church for the wider diocese.
- Access to other facilities requires travel outside of the Parish / County including the need to navigate the busy A419 dual-carriageway.

## New Village Hall Plans:

- Over recent years a local landowner has applied for permission to build a modest housing development of 6-houses. ([20/11236/OUT](#))
- As part of this scheme the developer is donating ¼ Acre of land to the Village to build a new Village Hall. This is by way of bequeathed from the land-owner who is in poor health, making some of this initial activity both situation and time sensitive
- The Plans have now received conditional Outline Planning consent and the LPCT has been working closely with all stakeholders to progress this opportunity for the Parish
- Research is continuing to determine the best design to meet the needs of the community whilst remaining economically viable, sympathetic to the environment and meeting legislative requirements.
- By-products from the new facility are also likely to include traffic calming measures enhancing the safety of Villagers and visitors



*Picture is purely illustrative*